

Chapter

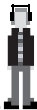
1



I Quick Start Guide I

Power ON / OFF	2
Listening to music	2

Recording	3
Charging	4



Power ON / OFF



1 | Power ON
Press the <PLAY/STOP> button to turn on the player.



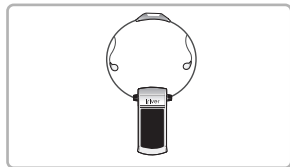
Press the <PLAY/STOP> button again to play.



2 | Power OFF
Press and Hold the <PLAY/STOP> button.



Listening to music



1 | Connecting product
Connect the earphones as shown illustrations.



When stopped or in recording standby mode, the player automatically turns off according to the setting of STOP POWER OFF on the MENU.



2 | Listening to music
Press the <PLAY/STOP> button to turn on the player.



3 | Selecting an Audio Track
◀◀ : Plays previous track
▶▶ : Plays next track



4 | Volume control
+ : To increase
- : To decrease

Voice Recording

- 1 | Menu**
Press and Hold the <MENU> button.



- 2 | Selecting a Voice Recording**
Press the or <LEFT>, <RIGHT> to select Voice mode.



- 3 | Recording Voice**
Press and Hold the <PLAY/STOP> button.
- The recorder will be in standby mode.

**Voice Recording**

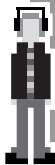
- 4** Press the <MENU> button.
- The recording is started.



- 5** Press the <MENU> button again to play.
- The recording is completed.



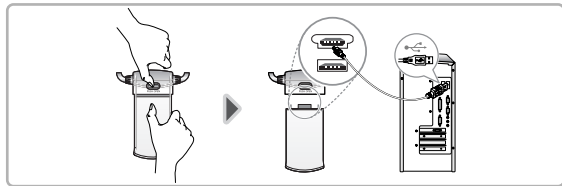
- 6 | Check the Recording Voice**
Press the <PLAY/STOP> button.



Charging with USB cable

1 | Connecting USB cable

Connect the USB cable (provided) to the USB port of your computer.



- | The player can be recharged even during power off.
- | Charge time: 3 hours (At full discharge)

Note ...



iriver

Chapter

2



I Getting started I

Welcome	6
Copyrights and Trademarks	6
Features of iFP-N10	7

Components	8
Locating the controls	8
LCD screen display	10





Getting started

Welcome

Thank you for purchasing this product.

The iFP-N10 comes complete with a long list of advanced features. Please read this manual carefully to get the most out of your new player.

<http://www.iRiver.com>

You can obtain information about your product, look for updates and find Q/A s at our website.

Getting started

Copyrights and Trademarks

Copyrights

iRiver Limited has all the rights of the patent, trademark, literary property and intellectual property related to this manual. You may not reproduce any part of this manual unless authorized by iRiver Limited. You can be punished by using any part of this manual illegally.

The software, audio and video which have an intellectual property are protected by copyright and international laws. It is user s responsibilities when he/she reproduce or distribute the contents created by this product.

The companies, institutions, products, people and events used in examples are not real data. We don t have any intension to be related with any companies, institutions, products, people and events through this manual and should not draw inferences. Users are responsible for observing the copyrights and intellectual properties.

©1999~2004 iRiver Limited. All rights reserved.

Trademarks

Windows, Windows 98 SE, Windows ME, Windows 2000, Windows XP and Windows Media Player are the registered trademarks of Microsoft Corp.

Features of iFP-N10

| Multi-Codec Player

Supports MP3,WMA and ASF formats.

| Firmware Upgrade

Provides the latest updated features via firmware upgrade.

| Graphic LCD supporting Multiple Languages

Graphic LCD which can support multiple languages (40 languages).

| 6 Preset EQ

Normal, Rock, Jazz, Classic, U Bass, Metal

| Xtreme EQ and Xtreme 3D

Customize your own EQ with Xtreme EQ and enhance bass and surround sound with Xtreme 3D.

| GUI (Graphic User Interface)Menu System

| Simple Navigation

Simple navigation makes it easy to find any song.

| Supports 8 levels of subfolders, 100 folders total and up to 500 files at one time

| Voice Recording

| Create your own playlists

| Convenient neck strap

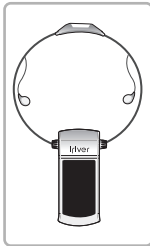
| Supports USB 1.1



Getting started

Components Accessories are subject to change without notice.

iFP-N10



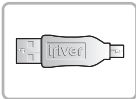
Earphones and Covers



Movie Clip CD



Mini USB



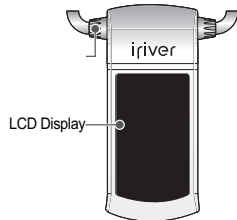
Manual/Warranty form
(Quick Start Guide)



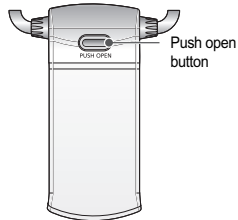
Getting started

Locating the controls Your player may differ slightly from that shown in the illustrations.

1 Product View - top



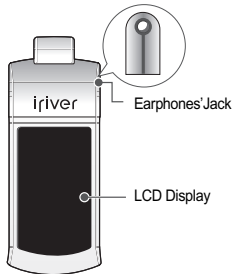
2 Product View - bottom



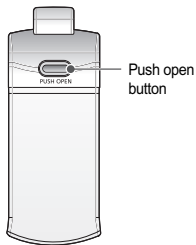
Getting started

Locating the controls Your player may differ slightly from that shown in the illustrations.

1 | Product View - top



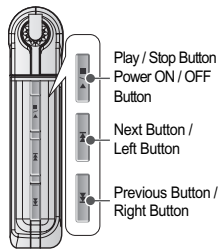
2 | Product View - bottom



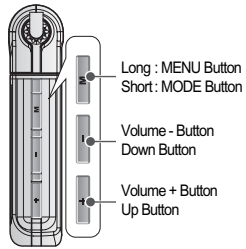
Getting started

Locating the controls Your player may differ slightly from that shown in the illustrations.

1 | Product View - Left side



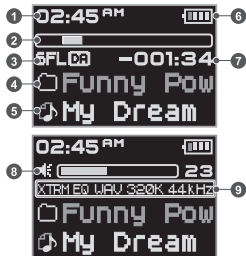
2 | Product View - Right side



Getting started

LCD screen display

1 Music mode



- 1 Time
- 2 Progress Bar
- 3 Play Mode
- 4 Folder Name
- 5 Song Title
- 6 Battery Indicator
- 7 Play time
- 8 Volume
- 9 EQ / File Format / Bit Rate / Sampling Rate

Getting started

LCD screen display

File Format



IRM (iRiver Rights Management)

iRiver Rights Management is a digital music format.
Please visit our web site for details about this music format.

LCD screen display

1 | Recod mode



[Before Recording]

- 1 Condition of Recording
- 2 Icon of Recording
- 3 Progress Bar
- 4 File Number
- 5 Elapsed Time
- 6 Indicator Time



[After Recording]

- 7 Progress Bar for Recode
- 8 Folder Name for Recode
- 9 File Name for Recode

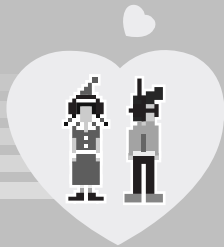
Note ...



iriver



iriver



Chapter

3



I Using Basic Functions I

Software installation	14
Connecting to the PC	17
Installation of New Hardware	18
Detach the player	20

Basic Functions	21
Navigation	21
MP3	22
Recording-Voice	22
Menu Setup	24
Delect-File	24
Delect-Folder	26



Software installation

Please complete the steps in this section **BEFORE ATTACHING YOUR PLAYER TO YOUR PC.**



System Requirements (Windows)

- Pentium 133MHz or faster
- USB Port
- Window 98SE/ME/2000 /XP
- CD-ROM drive
- 10MB free hard disk space

- 1 Insert the Installation CD into the CD-ROM drive.
The following screen appears after inserting the CD.



- If the installation doesn't automatically begin, execute the "setup.exe" file in the installation CD. The installation program will begin.
- The installation CD contains the following contents :
 - Device Driver
 - Manager Program
 - Manager Program for Mac

Software installation

Please complete the steps in this section **BEFORE ATTACHING YOUR PLAYER TO YOUR PC.**

- The player can store MP3 files or files of any type.
- You can upload files, other than music (MP3, WMA, ASF), to the PC using the iRiver Music Manager Program.
- Download latest versions of drivers and iRiver Music Manager at www.iRiver.com
- Please be sure your login has Administrator privileges if using Windows 2000 or Windows XP.

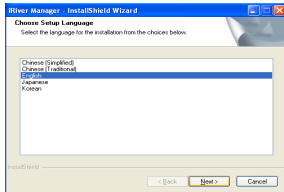
Using Basic Functions

Software installation Please complete the steps in this section BEFORE ATTACHING YOUR PLAYER TO YOUR PC.

- 1 Insert the Installation CD into the CD-ROM drive.
Installation starts automatically.



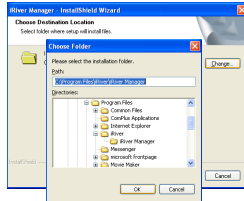
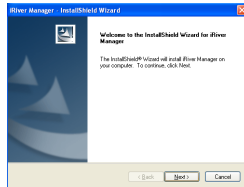
- 2 Click [Next] after selecting the language install.



Using Basic Functions

Software installation

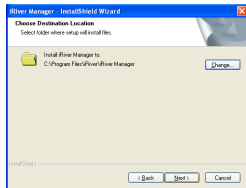
- 3 Click [Next] to Install iRiver Music Manager.
- 4 Select the folder to Install.
Click [Next].



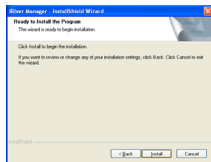
Using Basic Functions

Software installation

5 Click [Next] after confirming the installation folder.



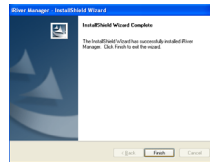
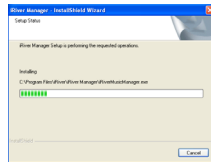
6 Click [Install] to begin the installation.



Using Basic Functions

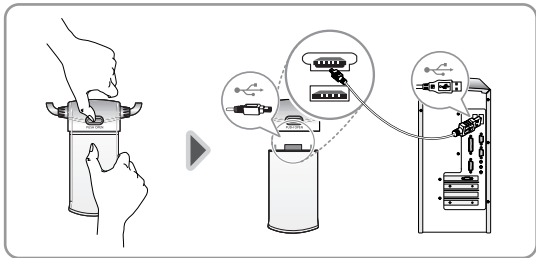
Software installation

7 Installation is in progressing. Click [Finish] after the installation is completed.



Connecting to the PC

- 1 Connect the USB cable (provided) to the USB port of your computer.



Installation of New Hardware

- 2 USB CONNECTED will appear on the LCD screen of the player.



Connect the USB cable to the PC after playback stops to avoid errors.



Installation of New Hardware

1 After installing iRiver Music Manager from the CD and connecting the player to your PC, [Found New Hardware] screen is displayed.



2 The computer will automatically search to find your new hardware.



Installation of New Hardware

3 Select [Install the software automatically (Recommended)] and click [Next].



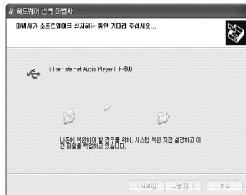
4 If a [Hardware Installation] warning message appears, click [Continue Anyway]. (Windows XP)



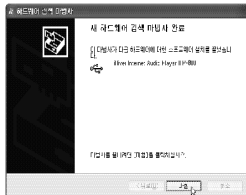
The iRiver software driver will not cause any damage to your computer.

Installation of New Hardware

5 The installation will continue.

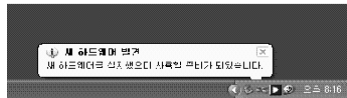


6 Click [Finish].
Completed the installation of [New hardware].



Installation of New Hardware

7 Information screen is displayed on the PC.
New hardware is installed successfully and ready to use.

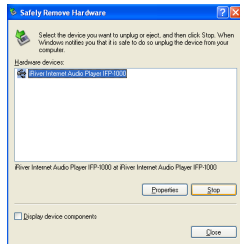
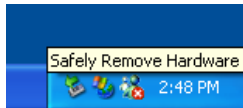


- | Windows 98SE, Windows ME, Windows 2000 OS do not need any other device driver installation.
- | Install New Hardware after installing iRiver Music Manager program.

Using Basic Function

Detach the player

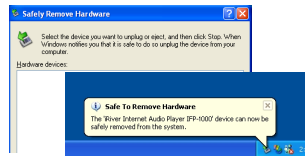
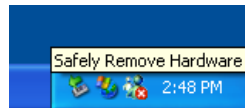
- 1 Select the [Safely Remove hardware] after clicking the [Safe To Remove Hardware] by using the right button of mouse.
- 2 Click the [Stop] after selecting the device to remove.



Using Basic Function

Detach the player

- 3 Click the [OK] after confirming the hardware to remove.
- 4 Click the [Close] after confirming the Safely Remove Hardware message. (In case of Windows XP)



If the player is disconnected inaccurately, it may cause a malfunction or damages to the player.

Using Basic Functions

Basic Functions



- 1** **Changing Functions**
Press and Hold the <MENU> button.



- If a folder is selected press the <K< / >>K> button to enter the folder.
- Navigation ↔ **MP3** ↔ Recode ↔ MENU

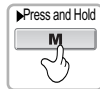


- If a folder is selected press the <MENU> button to enter the folder.
- Select MP3



Using Basic Functions

Navigation



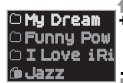
- 1** Press and Hold the <MENU> button.



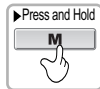
- 2** Press the <MENU> button again to navigation displayed.



- 3** If a folder is selected press the <+ / -> button to enter the folder.



Using Basic Functions

MP3

1 Press and Hold the <MENU> button.



2 Press the <SKIP> button to select [MP3].



3 Press the <MENU or (PLAY/STOP)> button to play.



Using Basic Functions

Recording-Voice

1 Press and Hold the <MENU> button.



2 Press the <SKIP> button to select [Recording].



3 Press the <MENU or (PLAY/STOP)> button to recording displayed.



Recording-Voice

- 1** | **To pause voice recording**
After recording,
press the <PLAY/STOP> button.



Press the <PLAY/STOP> button.



- 2** | **To stop recording**
Press the <PLAY/STOP> button.

**Recording-Voice**

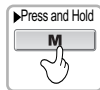
- 3** | **To play a recorded file**
After stopping a recording,
press the <PLAY/STOP> button.



- | The recorded file is saved as VOICE000.REC in the VOICE folder.
- | If 00:00:00 is displayed on the LCD, the player's memory is full.
To record, delete files and/or folders on the player to make some space available.
- | The player can not record when the memory is full or the battery is low.
- | Keep the player far away enough from the source to avoid distortion in the recording.
- | Recorded REC files can be converted to MP3 files using iRiver Manager.



Using Basic Functions

Menu Setup**1**

Press and hold the <MENU> button and the [Navigation] is displayed.

**2**

Press the <◀ / ▶> button. Select the [Menu] function.

**3**

Press the <MENU or (PLAY/STOP)> button and the [Menu] is displayed.



Using Basic Functions

Delect - File**1**

Stop to player.

**2**

Press thde <MENU> button to select [Navigation]. Press thde <MENU> button again to navigation displayed.



Delete - File



3 **File delete**
Press the < + / - > button.



4 Press the < MENU > button.
- "FILE DELETE ARE YOU SURE?"



5 Press the < << / >> > button to select [YES].
Press the < PLAY/STOP > button.



Note ...



Using Basic Functions

Delect - Folder



1 Stop to player.



2 Press thde <MENU> button to select [Navigation]. Press thde <MENU> button again to navigation displayed.



Using Basic Functions

Delect - Folder



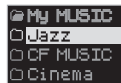
3 **Folder delete**
Press the < + / -> button.



4 Press thde <MENU> button.
- "FOLDER DELETE ARE YOU SURE?"



5 Press the < I◀◀ / ▶▶ > button to select [YES].
Press the <PLAY/STOP> button.



Chapter

4



I Detailed Operation I

Navigation mode	28
Play mode	29
Interval Repeat (A-B)	31

EQ	32
Program Mode	34



Detailed Operation

Navigation mode



- 1** | **Navigate to locate tracks to play**
Press and Hold the <PLAY/STOP> button.



- 2** | Press the <MENU> button again to play.
A list of files on the disc will be displayed.



- 3** | **Select the Folder and File**
Press the <+/-> button.
+ : Move the Up
- : Move the Down



Detailed Operation

Navigation mode



- 4** | **Select the Folder and File to play**
Press the <PLAY/STOP> button.



- Move to upper folder**
Press the <PLAY/STOP> button.



Play mode



- 1** **Change to the Play mode**
Press the <MENU> button.



- 2** **Select the MENU**
Press the <⏮ / ⏭> button.
Press the <MENU> button.



Play mode



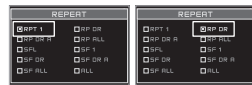
- 3** **Select the MODE**
Press the <⏮ / ⏭> button.
Press the <MENU> button.



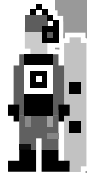
- 4** Press the <+/-> button.



- 5** Press the <MENU> button.



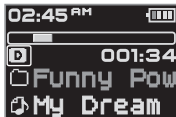
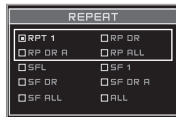
Select <RP DR>



Detailed Operation

Play mode

REPEAT

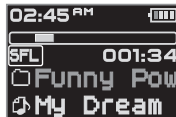


- : Plays a selected track repeatedly.
- : Plays all tracks in the selected folder and stop.
- : Plays all tracks in the selected folder repeatedly.
- : Plays all tracks stored in the player repeatedly.

Detailed Operation

Play mode

SHUFFLE



- SFL** : Randomly plays all tracks in the player and stop.
- SFL 1** : Plays a single track repeatedly.
- SFL D** : Randomly plays all tracks in the selected folder and stop.
- SFL DR** : Randomly plays all tracks in the selected folder repeatedly.
- SFL A** : Randomly plays all tracks stored in the player repeatedly.