

iriver

iFP-900

<http://www.iriver.com>



iriver

Instruction Manual

MP3 PLAYER /FM TUNER

Model iFP-900



Firmware Upgradable

**Thank you for your purchase.
Please read this manual carefully
before using your new player.**

<http://www.iriver.com>

Welcome

Welcome to iRiver Website

Thank you for your iRiver purchase. The iFP-900 comes complete with a long list of advanced features. It is important that you read the manual to ensure that you get the most out of your new player.

<http://www.iRiver.com>

- URL : www.iRiver.com
- Find information on our company, products, and customer and technical support.
- Update your player with firmware downloads. Firmware upgrades offer
- Consult the product FAQ.
- Register your iRiver product online so that our Customer Service is able to provide support as efficiently as possible.
- All contents contained in this manual subject to change without notice to improve ability of this player or according to changing of specification.

Certification

- CE, FCC, MIC

Copyrights / Certification / Trademarks / Limited Liability

Copyrights

- iRiver Limited has all the rights of the patent, trademark, literary property and intellectual property related to this manual. You may not reproduce any part of this manual unless authorized by iRiver Limited. You can be punished by using any part of this manual illegally.
- The software, audio and video which have an intellectual property are protected by copyright and international laws. It is user s responsibilities when he/she reproduce or distribute the contents created by this product.
- The companies, institutions, products, people and events used in examples are not real data. We don t have any intension to be related with any companies, institutions, products, people and events through this manual and should not draw inferences. Users are responsible for observing the copyrights and intellectual properties.

©1999~2004 iRiver Limited, All right reserved

Trademarks

- Windows, Windows 98 SE, Windows ME, Windows 2000, Windows XP and Windows Media Player are the registered trademarks of Microsoft Corp.

Limited Liability

- Neither the Manufacturer, importers nor dealers is responsible for any accidental damage including bodily injury or any damage resulting from misuse or unsuitable operation by you.
- The information on this manual is prepared with the current product specifications. The manufacturer, iRiver Limited, is adding new features to the product and may persistently apply new technologies hereafter. All standards may be changed at any time without notice.

Contents

Getting started 1

Locating the controls 2

PC software installation 3

Basic operation 4

Convenient Functions 5

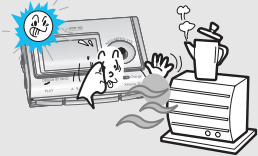
Additional information 6

This manual covers the installation and use of the player hardware. For details regarding the software operation including transferring music to the player, please see the Software Instruction Manual.

Handling Notices for Safety

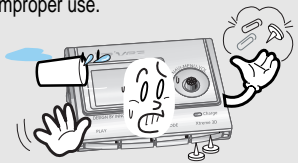
Keep out of direct sunlight.

- Damage to your player may result from improper use.



Do not place objects inside the device.

- Damage to your player may result from improper use.



Do not disassemble or modify.

- Damage to your player may result from improper use.



Keep out of extreme heat and cold.

- Damage to your player may result from improper use.



Do not use excessive force on the buttons or attempt to disassemble the device.

- Damage to your player may result from improper use.



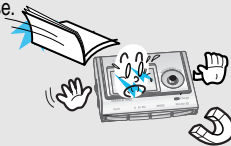
Do not use water or chemicals to clean the player. Clean the surface with a soft cloth.

- Damage to your player may result from improper use.



Keep the player away from strong magnets or excessive vibration or dropping any material.

- Damage to your player may result from improper use.



Avoid contacting the player with water or chemicals.

- Damage to the internal parts of the player may occur. If your player gets wet, dry the outside with a soft cloth as soon as possible.



Avoid falling over a stone or other material with putting the player in your pocket

- Damage to your player may result or injury from improper use.



Handling Notices for Safety

Keep away from harsh environments including humid, dusty, and smoky areas.

- Damage to your player may result from improper use.



Avoid running with hanging the player in your neck.

- Damage to your player may result or injury from improper use.



Keep headphones / earphones cords under control at all times.

- Cords may get caught on a variety of objects and cause damage or injury.



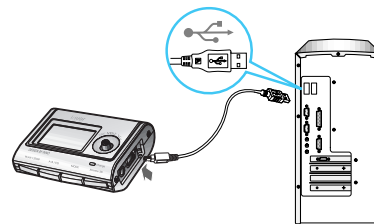
Features of iFP-900

- **Multi-Codec Player** : Supports MP3, WMA, OGG and ASF formats.
- **Firmware Upgrade**
Provides the latest updated features via firmware upgrade.
- **260,000 color graphic LTPS LCD supporting Multiple Languages(40 languages)**
iFP-900 Series comes with 260,000 color graphic LTPS (Low Temperature Poly Silicon) LCD which can support multiple languages.
- **FM Function**
You can easily listen to FM stations and set your favorite stations by using Auto Preset and Frequency Memory functions.
- **6 Preset EQ** : Normal, Rock, Jazz, Classic, U Bass, Metal
- **Xtreme EQ and Xtreme 3D**
Customize your own EQ with Xtreme EQ and enhance bass and surround sound with Xtreme 3D.
- **GUI (Graphic User Interface) Menu System**
- **Easy Navigation**
The simple navigation makes it easy to find any song.
- **Supports 8 levels of subfolders, 500 folders total and up to 1500 files at one time.**
- **Create your own playlists.**
- **Direct MP3 Encoding**
11.025KHz ~44.1KHz, 8Kbps ~ 320Kbps
- **Record FM Radio, Voice, or line-in from another device**
Voice record level is automatically controlled by AGC function.
- **Convenient neck strap.**
- **Built-in Rechargeable battery that charges directly from the USB port as well as AC Adapter.**
- **Supports USB 2.0** (Maximum transferring speed : 480MBit/Sec.)

About Power Supply

Charging from the PC

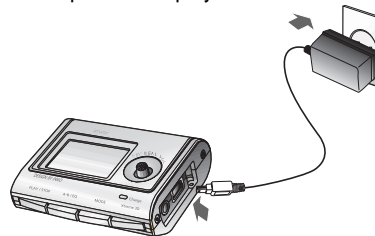
Connect the player to the PC with USB cable.
The player will charge automatically when the player is connected to the PC.



- Note**
- Charging is also doing when the player turns off.
 - Charging indicator is disappeared when charging is done.

Charging with AC Adapter

Use only the AC Power Adapter supplied with the player for safety.
Connect the AC adapter to the USB port on the player first and then into AC outlet.
(AC adapter of this player is for 100~240V, 50~60Hz.)



- Note**
- Charging time
Approx. 4 hours
(At full discharge, Stop mode)

About Power Supply

Managing the Rechargeable Battery

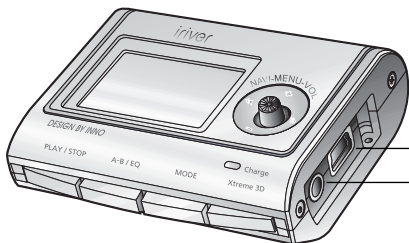
Note

- **Charge and store the battery at room temperature.**
It may not charge properly in hot or cold temperature environments.
- **Do not attempt to disassemble the battery.**
Do not expose the battery to open flame.
These activities may cause the battery to explode resulting in serious injury.
- **Do not contact the connectors of the battery to metal objects, or an electrical short may occur.**
- **When do not use the player for a long time, store the player with full charged condition.**
Use the player after full charge.
- **The rechargeable battery is expendables and life of battery shorten with the lapse of time.**
- **Keep the player and battery away from children or animal.**
Biting the player or battery may cause exposure, electric shock or exposure to electrical fields.

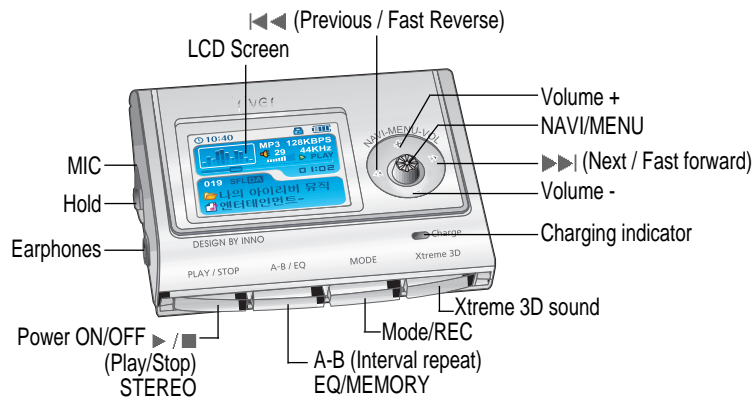
Front View	2-1
Rear View / Side View	2-2
LCD screen	2-3

Locating the controls

Front View



USB Connection Port
LINE IN/OPTICAL IN



◀◀ (Previous / Fast Reverse)

LCD Screen

Volume +
NAVI/MENU

▶▶ (Next / Fast forward)

Volume -

Charging indicator

Xtreme 3D sound

Power ON/OFF
(Play/Stop)
STEREO

Mode/REC
A-B (Interval repeat)
EQ/MEMORY

Locating the controls

Rear View / Side View

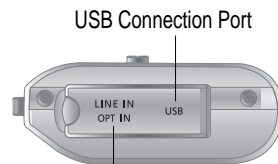


RESET

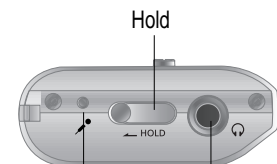


Xtreme 3D sound

Power ON/OFF
(Play/Stop) STEREO
A-B (Interval repeat)
EQ/MEMORY
MODE/REC



LINE IN/OPTICAL IN

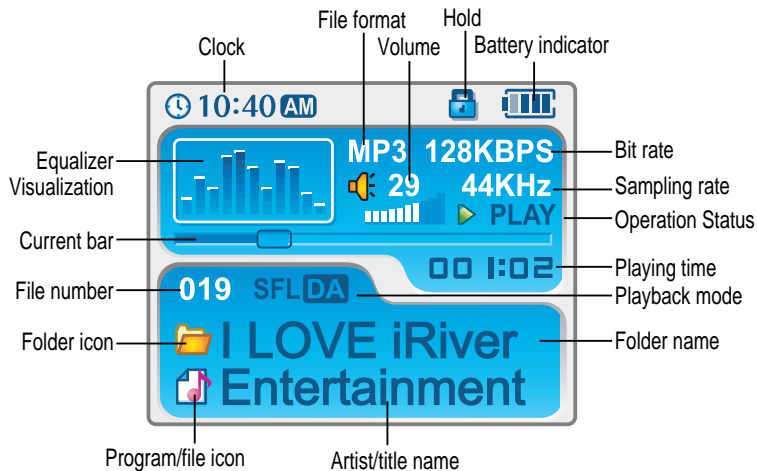


MIC

Earphones

Locating the controls

LCD Screen



Note • According to file type displayed as follows :

ASF : ASF OGG : OGG
IRM : IRM WMA : WMA
MP3 : MP3

• IRM (iRiver Rights Management) : iRiver Rights Management is a digital music format.

PC software installation

Contents

This section covers the installation for Windows operating systems only.
For installation instructions for Mac OS, please see the Software Instruction

PC software installation 3-1

Attach the player 3-4

Note First, install iRiver Music Manager program BEFORE ATTACHING YOUR PLAYER TO YOUR PC.

PC software installation

Software installation

- Insert the Installation CD into the CD-ROM drive.
The following screen appears after inserting the CD.



- If the installation doesn't automatically begin, execute the "setup.exe" file in the installation CD. The installation program will begin.
- The installation CD contains the following contents :
 - Device Driver
 - iRiver Music Manager
 - Manager Program for Mac

- The player can store MP3 files or files of any type.
You can upload files, other than music (MP3, WMA, OGG, ASF), to the PC using the iRiver Music Manager Program.
- Download latest versions of drivers and iRiver Music Manager at www.iRiver.com
- Please be sure your login has Administrator privileges if using Windows 2000 or Windows XP.

Note System Requirements (Windows)

- Pentium 133MHz or faster
- USB port
- Window 98SE / ME / 2000 / XP
- CD-ROM drive
- 10MB free hard disk space

PC software installation

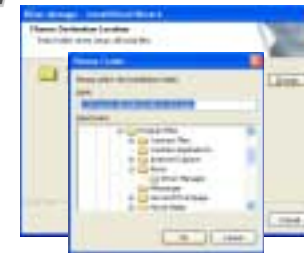
Software installation

Please note that the installation screens may differ slightly from those appearing here, as software may be of a more recent version. If your screens differ, please visit www.iRiver.com/software for an updated user guide

- 1 Insert the Installation CD into the CD-ROM drive. Installation start automatically.
- 2 Click "Next" after selecting the language to install.



- 3 Click "Next" to Install iRiver Music Manager.
- 4 Select the folder to Install. Click "OK".



PC software installation

Software installation

- 5 Click "Next" after confirming the installation folder.



- 6 Click "Install" to begin the installation.



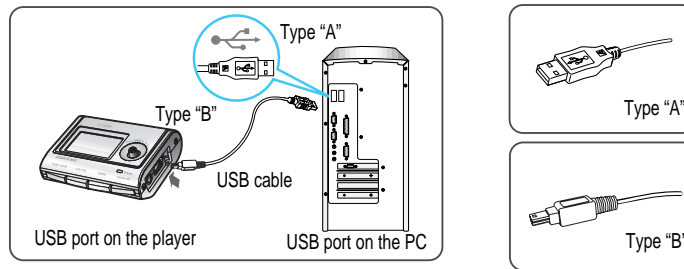
- 7 Installation is in progress. Click "Finish" after the installation is completed.



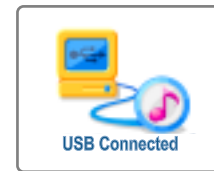
Attach the player

Connecting to the PC

- 1 Connect the USB cable (provided) to the USB port of your computer.



- 2 Lift the protective cover over the USB port and connect the USB cable to the player.
- 3 "USB CONNECTED" will appear on the LCD screen of the player.



Note • Connect the USB cable to the PC after playback stops to avoid errors.

Attach the player

Installation of "New Hardware"

- 1 After installing iRiver Music Manager from the CD and connecting the player to your PC, "Found New Hardware" screen is displayed. (Windows XP)



- 3 Select "Install the software automatically (Recommended)" and click "Next".



- 2 The computer will automatically search to find your new hardware.



- 4 If a "Hardware Installation" warning message appears, click "Continue Anyway". (Windows XP)
The iRiver software driver will not cause any damage to your computer.



Attach the player

Installation of "New Hardware"

- 5 The installation will continue.



- 6 Click "Finish"
Completed the installation of "New hardware".



- 7 Information screen is displayed on the PC. New hardware is installed successfully and ready to use.



- Note**
- Windows 98SE, Windows ME, Windows 2000 O.S do not need any other device driver installation.
 - Install New Hardware after installing iRiver Music Manager program.

Attach the player

Safely Removing the player from the PC

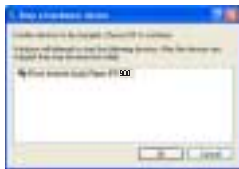
- 1 Select the "Safely Remove hardware" after clicking the "Safe To Remove Hardware" by using the right button of mouse.



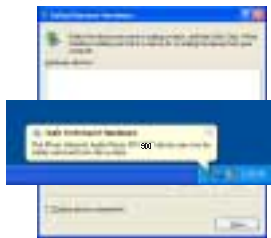
- 2 Click the "Stop" after selecting the device to remove.



- 3 Click the "OK" after confirming the hardware to remove.



- 4 Click the "Close" after confirming the Safely Remove Hardware message. (In case of Windows XP)



Note • Remove the player from the PC after safe remove to avoid errors.

Basic operation

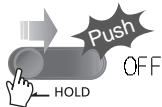
Contents

Basic Operation	4-1
Listening to Music	4-7
Listening to the FM radio	4-8
Recording	4-13

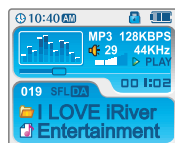
Basic operation

Turning on the player

- Connect the earphones as shown below.
- Put the HOLD switch to "OFF".

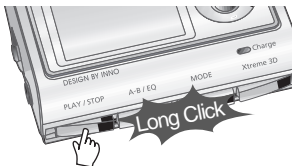


- Press the PLAY/STOP button to turn on the player. The "My Image" appears on the LCD.
- Press it again to play.



Turning off the player

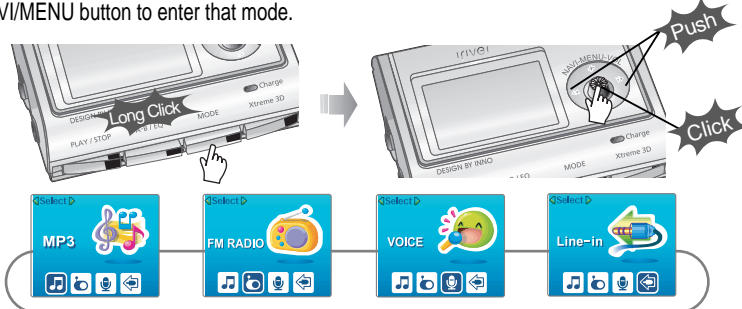
Press and hold the PLAY/STOP button to turn the player off.



Basic operation

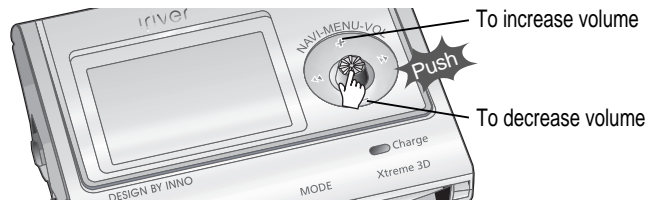
Changing functions

Press and hold MODE button to appear current function on the LCD screen. Push the NAVI/MENU button toward \leftarrow or \rightarrow to select the desired function, then click the NAVI/MENU button to enter that mode.



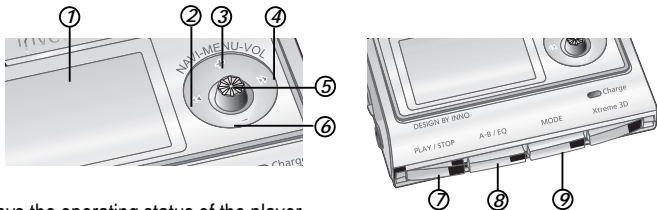
Adjusting the volume

Push the NAVI/MENU button to the VOL + direction to increase volume. Push the NAVI/MENU button to the VOL - direction to decrease volume.



Basic operation

Listening to music

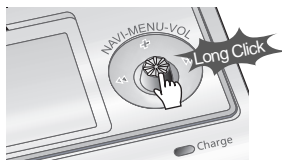


1. Displays the operating status of the player.
2. To skip to previous file, folder, FM station or value.
3. To increase volume.
4. To skip forward to the next file, folder, FM station or value.
5. To select NAVI/MENU function.
6. To decrease volume.
7. To turn on/off, to play or stop playback or to select FM mode
8. To select EQ mode, A-B repeat, or automatically store FM stations.
EQ : NORMAL → ROCK → JAZZ → CLASSIC → U BASS → METAL → Xtrm EQ → Xtrm 3D
9. To select function, playback mode, record/stop recording.

Navigation



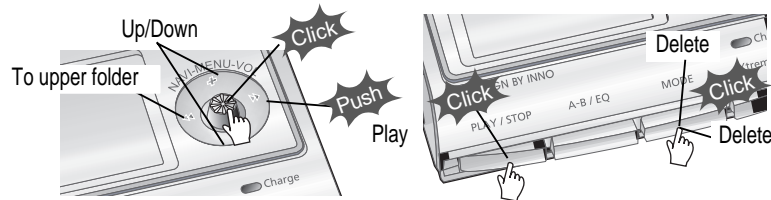
Menu



Basic operation

Navigation

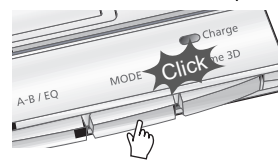
Press the NAVI/MENU button and find the desired music file by pushing the NAVI/MENU button to VOL + or VOL - direction. To play the files, press the NAVI/MENU button, push the NAVI/MENU button to the ►► direction or the PLAY/STOP button. To move to the upper folder, the NAVI/MENU button to the ◀◀ direction. If there is no upper folder, NAVIGATION stops.



- Select the folder to delete in stop mode. Then Click the "MODE" button. "FILE(or FOLDER) DELETE ARE YOU SURE?" is displayed on the screen. Select "YES" by using ◀◀ or ►► (VOL + or VOL -) to delete. Then press the NAVI/MENU button.

Changing the playback mode

While an audio file is playing or the player is in stop mode, press MODE/REC to activate selected modes, such as Repeat or Shuffle.



Repeat :

Shuffle :

Intro :