

Instruction Manual

iRiver

iRiver

Model iFP-100

MP3 PLAYER / FM TUNER (Option)

Model iFP-100 Series



Firmware Upgradable

Thank you for purchasing the product.
Please read this manual carefully before use.

iRiver

***iRiver* Limited**
http://www.iRiver.com

<http://www.iRiver.com>

THIS DEVICE COMPLIES WITH PART 15 OF THE FCC RULES. OPERATION IS SUBJECT TO THE FOLLOWING TWO CONDITIONS: (1) THIS DEVICES MAY NOT CAUSE HARMFUL INTERFERENCE, AND (2) THIS DEVICE MUST ACCEPT ANY INTERFERENCE, RECEIVED, INCLUDING INTERFERENCE THAT MAY CAUSE UNDERSIRED OPERATION.

Note : This equipment has been tested and found to comply with the limits for a Class B digital device, pursuant to part 15 of the FCC Rules. These limits are designed to provide reasonable protection against harmful interference in a residential installation. This equipment generates, uses and can radiate radio frequency energy and, if not installed and used in accordance with the instructions, may cause harmful interference to radio communications. However, there is no guarantee that interference will not occur in a particular installation. If this equipment does cause harmful interference to radio or television reception, which can be determined by turning the equipment off and on, the user is encouraged to try to correct the interference by one or more of the following measures :

- Reorient or relocate the receiving antenna.
- Increase the separation between the equipment and receiver.
- Connect the equipment into an outlet on a circuit different from that to which the receiver is connected.
- Consult the dealer or an experienced radio/TV technician for help.

NOTE: THE MANUFACTURER IS NOT RESPONSIBLE FOR ANY RADIO OR TV INTERFERENCE CAUSED BY UNAUTHORIZED MODIFICATIONS TO THIS EQUIPMENT. SUCH MODIFICATIONS COULD VOID THE USER'S AUTHORITY TO OPERATE THE EQUIPMENT.

Introducing iRiver website

- URL : <http://www.iRiver.com>
- Provides information on our company, products, and contacting point for our customers.
- Unique feature of "Firmware (System software) Upgrade" keeps providing premium disc readability and various optional add-on features, supporting new CODEC to be introduced in the future.
- Provides FAQ as well as Beginner's Guide
- Set up customer registration to enable online customer service so that all iRiver users receive the latest information, firmware upgrade, etc. via newsletters.

iRiver Limited does not assume any responsibility for errors or omissions in this document or make any commitment to update the information contained herein.

iRiver is a registered trademark of iRiver Limited in the Republic of Korea and /or other countries and is used under license. Microsoft Windows Media and the windows Logo are trademarks or registered trademarks of Microsoft Corporation in the United States and /or other countries. WinAmp and WinAmp logo is registered trademark of NullSoft Inc.

All other brand and product names are trademarks of their respective companies or organization. All other product names may be trademarks of the companies with which they are associated.

© 1999-2002 iRiver Limited. All right reserved.

Unique Features of iFP-100

- **Unique Design :**
- **Multi-Codec Player**
: Supports MP3, WAV formats.
- **Firmware Upgrade**
: Provides the latest updated features via firmware upgrade.
New formats such as AAC, MP3 Pro and Ogg Vorbis can be supported in the future with a simple upgrade method. Player features such as add on, modification, and continuous improvement of disc recognition are always provided.
- **Graphic LCD supporting Multiple Languages**
: iFP-100 Series comes with graphic LCD which can support multiple languages, including: English, French, Spanish, German, Italian, other alphabet-oriented fonts, Korean, Japanese(Katakana, Hirakgana, Kanji) and others. Over 30 languages are supported.
- **FM Function**
You can easily listen FM broadcast by using Auto Preset, Frequency Memory and various function.
- **6 Equalizing Pattern** : Normal, Rock, Jazz, Classic, U Bass, User EQ

Supporting of GUI(Graphic Equalizer Interface) MENU

Contents

1. CONTROLS

Front View, Side View 1.....	5
Side View 2, Up/Downside View.....	6
LCD Window.....	7

2. BASIC OPERATION

Listening to music.....	8-9
Playing FM Tuner.....	10-13
Recording FM.....	14
Recording Voice.....	15-16

3. Useful Features

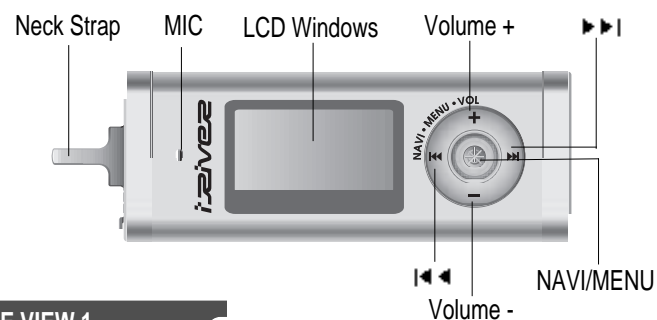
Installing Software on PC.....	17-21
Basic Operation.....	22-24
Navigation.....	25-26
Deleting Folder on the player.....	27
Mode.....	27-28
Program Mode.....	29-30
EQ Mode.....	31
Menu Controls.....	32-41
Initializing/ Making new folder/Refresh.....	42
Download from the PC.....	43-44
Upload/ Listening MP3 on the PC.....	45-46
Deleting files on the PC.....	47

4. Additional Information

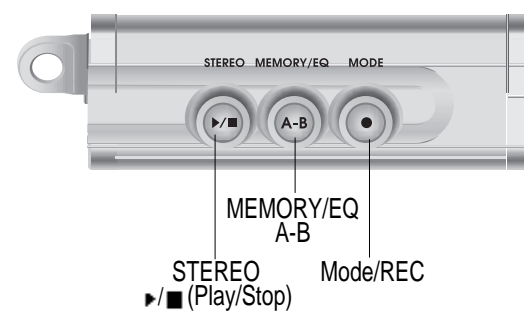
Power Supply(Battery).....	48
Trouble Shooting.....	49
Precautions.....	50
Accessories.....	51
Specification.....	52

CONTROLS

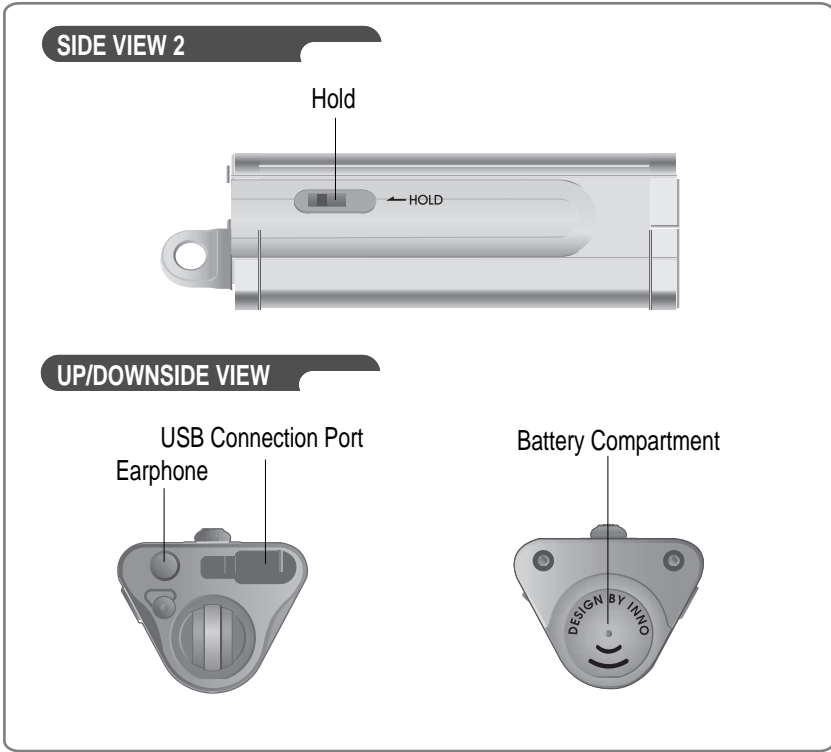
FRONT VIEW



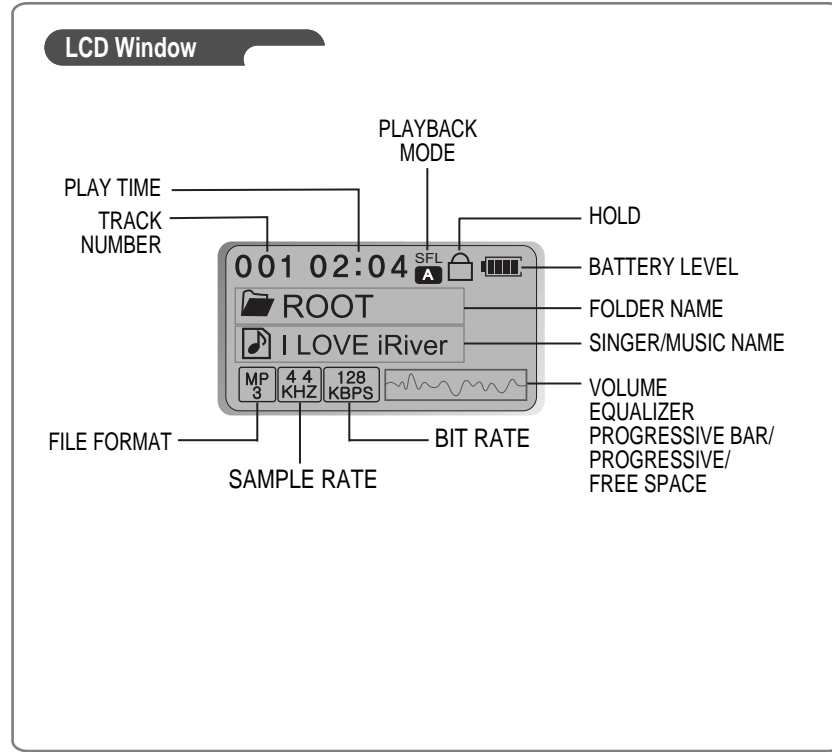
SIDE VIEW 1



CONTROLS



CONTROLS



LISTENING TO MUSIC

- Connect the earphones as below.



- Put the HOLD switch to "OFF".



- To adjust the volume
 - + : To increase volume
 - : To decrease volume



- Turn the power of the player on . Press PLAY/MENU button to play.













- To select music
 - ⏮ : To select previous music
 - ⏭ : To select next music



- Note**
 - With Hold switch on, you can't manipulate the controls on the player.
 - When the player doesn't operate for about 3 minutes, the player automatically turns off.

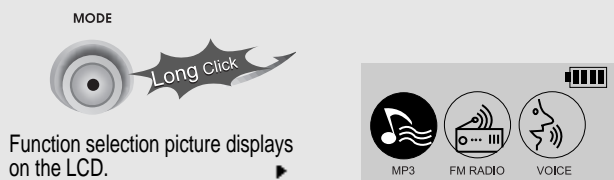
LISTENING TO MUSIC



- To Play/Pause 
- To change source (MP3 ↔ FM ↔ Voice recording) 
- To stop 
- To play next music 
- To play previous music 
- To play next folder 
- To play previous folder 
- To search fast advance the music. 
- To search fast reverse the music. 
- To turn off the player 

PLAYING FM TUNER

- While Playing CD, Press MODE/REC button.



- Push **||◀▶||** button to select FM RADIO. Press NAVI/MENU or PLAY/STOP button to confirm.



- Press PLAY/STOP button to select Stereo/Mono.



- Press PLAY/STOP button to turn the player off.



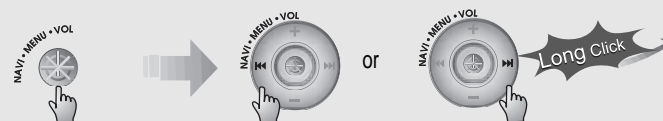
PLAYING FM TUNER

- Selecting Frequency(FM 87.5MHz ~ 108MHz)

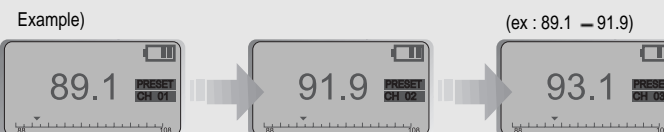
- To change frequency, push the **||◀▶||** or **▶▶||** shortly.



- Auto Scan function: To select memorized channel, press the Navi/Menu button and find the channel by pushing **||◀▶||** or **▶▶||**.




- PRESET Mode : To select memorized channel, press the Navi/Menu button and find the channel by pushing **||◀▶||** or **▶▶||**.




RECORDING FM

To record FM

Press  [MODE/REC] button during FM receiving.

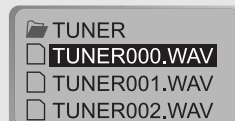
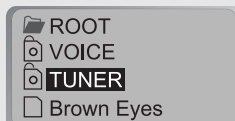


To stop FM recording

Press  [MODE/REC] button once more, recording is completed.



Recorded file is saved as form of TUNER001.WAV,



To play a recorded file

Select the MP3 at the initial window, then press PLAY/STOP button.

Note

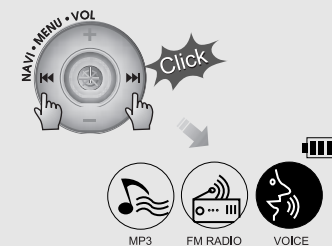
Volume is not controlled during recording.

RECORDING VOICE

1 Press MODE/REC button for a long time.



2 Press |◀◀ or ▶▶| button to Voice mode.



3 Press NAVI/MENU button(or PLAY/STOP) once more to start recording.



4 Press MODE/REC button once more. Voice recording starts.



RECORDING VOICE

To stop recording

- 1 Press MODE/REC button.



To play a recorded file

- 1 Press PLAY/STOP button.



- Recorded file is saved as form of VOICE001.WAV.
- If displayed "00:00:00" on the LCD, the memory of the player is full. To rec, delete files to make free space in the player.(Refer 26~27 Page)

INSTALLING SOFTWARE ON PC

- 1 Insert the Installation CD into the CD-ROM drive. The following picture appears when inserting the CD.



- The installation CD includes contents as follows.
 - Device Driver
 - Manager Program

- You can save MP3 files or other type of files on the PC or the Player by using Manager Program.
- You can upgrade the Operating System of the player by downloading from the internet.(Log on to www.iriver.com or www.iriveramerica.com)

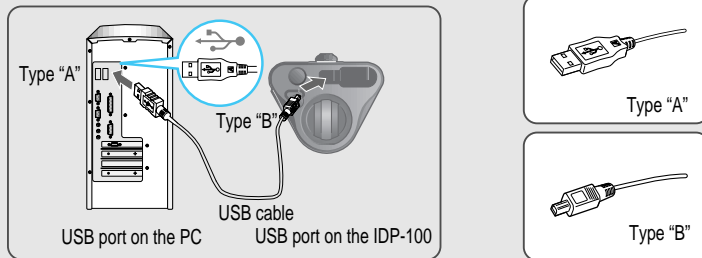
System Requirements

- Pentium 133MHz or faster
- USB port
- Window 98 SE / ME / 2000 / XP
- CD-ROM drive
- 20MB free hard disc space

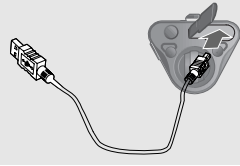
INSTALLING SOFTWARE ON PC

I To install "New hardware"

- 1 **Connect the USB cable(Provided) to the USB port of your computer.**
 Type "A" : USB port on the Panel of PC Type "B" : USB port of iFP-100
 Connect the USB cable to match the direction.



- 2 Turn on the iFP-100, remove the protective cover of USB port, and connect the USB cable.



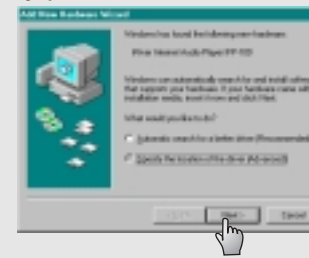
- 3 "USB CONNECTED" will appear on the LCD of the player.



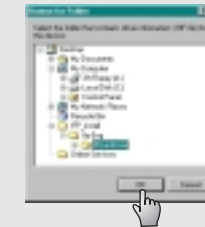
Caution
 After you stop playback of player, connect the USB cable to the player.

INSTALLING SOFTWARE ON PC

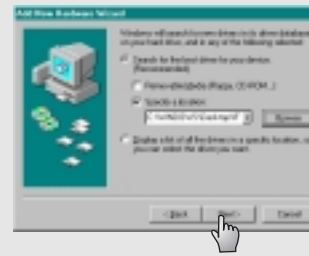
- 4 The following picture appears when connecting the USB cable.
 Select the folder to Install.
Click "NEXT".



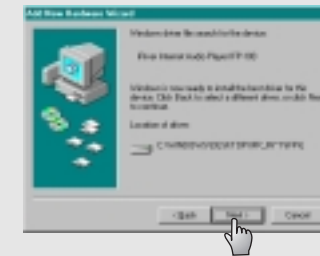
- 5 Select "iRiverDriver" folder to Install.
Click "OK".



- 6 **Click "NEXT".**

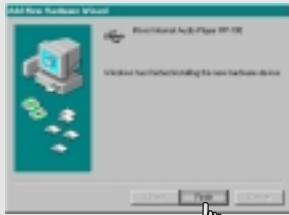


- 7 **Click "NEXT".**



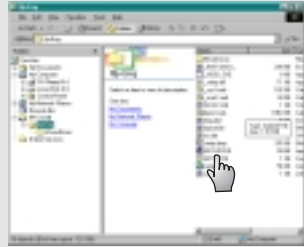
INSTALLING SOFTWARE ON PC

- 8 Click "Finish"**
Complete the installation of "New hardware".

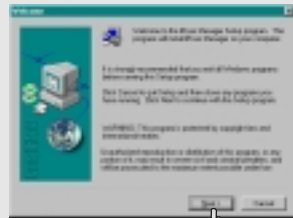


2 To install Manager program

- 1 Click "SETUP.EXE"** in the ifp-Eng folder to start the installation.



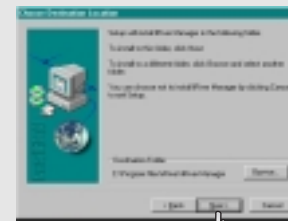
- 2 Click "NEXT".**



20

INSTALLING SOFTWARE ON PC

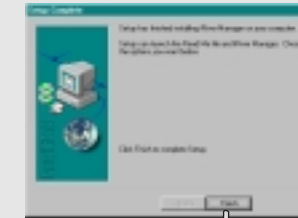
- 3 Select the folder to install.**
Click "NEXT".
Generally assigned as "C Driver → Program File → iRiver → iRiver-Manager".



- 4 Click "NEXT".**

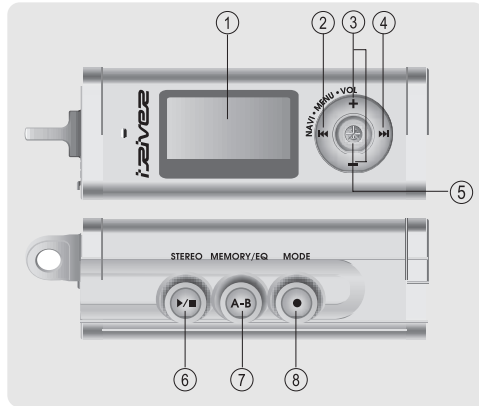


- 5 Click "Finish"**
Complete the installation of "Manager".



21

BASIC OPERATION



When using Navigation



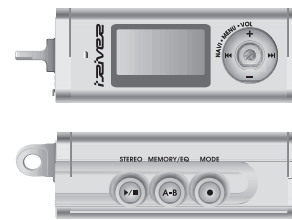
When using Menu



1. LCD windows.
2. To select the previous music or station for MP3 or FM.
3. To increase or decrease volume
4. To select the next music or station for MP3 or FM.
5. To select NAVI/MENU function.
6. To start playback or pause for MP3, to select mode for FM or turn off
7. To select EQ mode, A-B repeat or to memory stations for FM automatically.
EQ : NORMAL → ROCK → JAZZ → CLASSIC → U BASS → USER EQ
8. To select function, playback mode or recording/stop recording.

BASIC OPERATION

BASIC OPERATION



Volume Control: Slide jog lever to the upward or to the downward.



Changing FM Mode :



MP3 ↔ FM Changing :



NAVIGATION

Push NAVI/MENU button shortly and find the desired track by pushing VOL + or VOL - button.
To select the track, please press Navi/Menu(or PLAY/STOP button) shortly.

To move to the upper folder, short click NAVI/MENU button.
If there is not upper folder, NAVIGATION stops.

BASIC OPERATION

MENU

Long press of **NAVI/MENU** will execute menu function.

- ① Shifting between menus : Press |◀◀ and ▶▶|
- ② Exit : Press **VOL -** button or long press **NAVI/MENU** button.
- ③ Select Function: press **VOL -** button.

MODE

While MP3 is playing, do a short click of **MODE/REC** to activate selected modes.

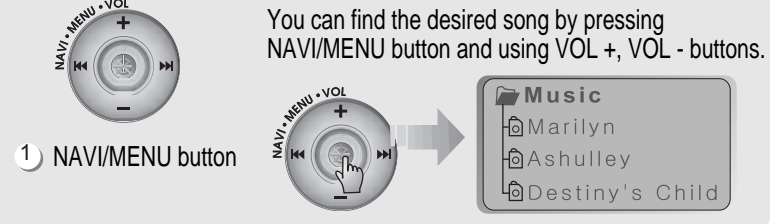
Long click of **MODE/REC** button :
You can select function of MP3 or FM or voice recording and play mode is selected when MP3 plays.

NAVIGATION

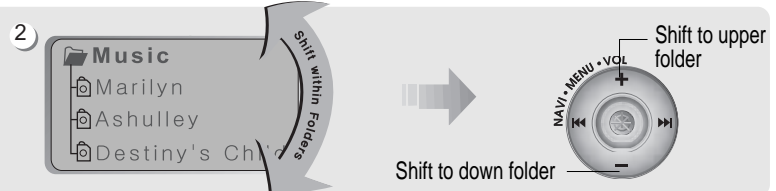
NAVIGATION is the function to search track.

You can find the desired song by pressing **NAVI/MENU** button and using **VOL +**, **VOL -** buttons.

1 **NAVI/MENU** button



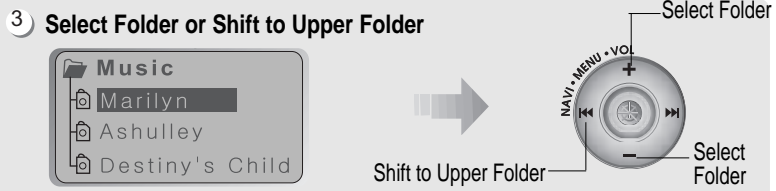
2



Shift to upper folder

Shift to down folder

3 **Select Folder or Shift to Upper Folder**



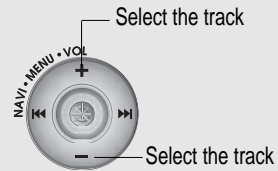
Select Folder

Shift to Upper Folder

Select Folder

NAVIGATION

4 Select the track



DELETING FILES ON THE PLAYER

To delete files

1 Stop playback.



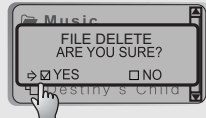
2 Click "NAVI/MENU" button.



3 Select files to delete.



4 Click "MODE" button. "are you sure?" is displayed on the LCD. Click "yes" to delete.



DELETING FOLDER ON THE PLAYER

To delete folder

1 Stop playback.



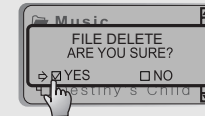
2 Click "NAVI/MENU" button.



3 Select folder to delete.



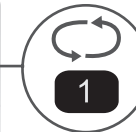
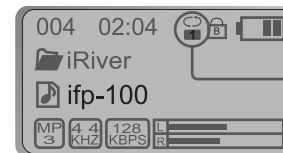
4 Click "MODE" button. "are you sure?" is displayed on the LCD. Click "yes" to delete.



* Note : You can only delete blank folder. Delete folder after deleting files in the folder.

Mode





You can enjoy various ways of playing by using playback mode. Please refer to the function controls (page 25) for user-defined configuration.







◀ When MODE/REC button is pushed, icon in the playback mode indicator is changed.

MODE


REPEAT

	Play a single track repeatedly.
	Play whole tracks in the folder and stop.
	Play whole tracks in the folder repeatedly.
	Play whole tracks in the disk repeatedly.

SHUFFLE

SFL	Randomly play whole tracks in the disk repeatedly and stop.
SFL 	Play a single track repeatedly.
SFL 	Randomly play whole tracks in the folder repeatedly and stop.
SFL 	Randomly play whole tracks in the folder repeatedly.
SFL 	Randomly play whole tracks in the disk repeatedly.

INTRO

	<p>INTRO: Play beginning 10 seconds of each track in sequential order.</p> <p>INTRO HIGHLIGHT: Play 10 seconds from the spot 1 minute played for each track in sequential order.</p> <p>Above feature can be selected within Function Control.</p>
--	--

PROGRAM MODE

- Program mode: Play tracks in your favorite order.

Activating Program mode

- At stop mode MEMORY/EQ



Shift to Program mode ▶



▶ Program mode is activated while in Stop Mode.

▶ Repeat A-B is activated while in Play Mode.



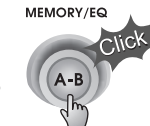
- Use VOL +, VOL -, NAVI/MENU button to select the desired track and press



▶ Push VOL + or VOL - lever to select folder, then press

MEMORY/REC button to save all files in the folder.


▶ To delete programmed files, press MODE/REC button after selecting file to be deleted. Then program list is automatically changed.



Track number in program list Music name

PROGRAM MODE

Program play

After programming, press  to play the tracks in sequential order.



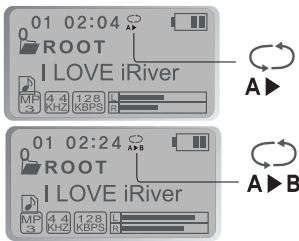
Cancel Program Mode

While in Stop Mode



Interval Repeat

Play selected interval repeatedly



Press button once to select the beginning <A> Point.

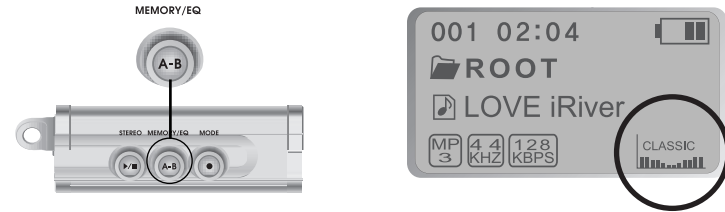


Press button again to select the ending Point.

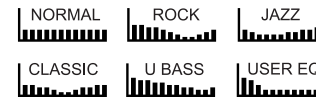
▲ A-B interval will be repeated.

EQ MODE

EQ MODE



Long click of MEMORY/EQ button displays the current EQ.
Every time you click this button, the EQ mode shifts in sequential order.



Note: Please refer to the Function Control (Page 41) for configuring User Defined EQ.

MENU (FUNCTION CONTROLS)

Function Control is subject to change with different firmware versions. Users can configure their own settings.

Configuration

GENERAL

- ▣ beep volume
- ▣ resume
- ▣ fade in
- ▣ language
- ▣ load default

DISPLAY

- ▣ back light
- ▣ lcd contrast
- ▣ visualization
- ▣ tag information
- ▣ time

TIMER

- ▣ sleep
- ▣ pwr off

CONTROL

- ▣ fast skip
- ▣ scan speed
- ▣ scroll speed
- ▣ sound balance
- ▣ AGC control

MODE

- ▣ repeat
- ▣ shuffle
- ▣ intro

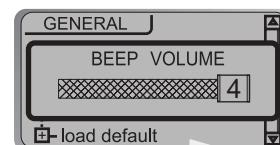
User EQ

- ▣ bass boost
- ▣ treble boost

MENU

Menu Operation

- Pressing NAVI/MENU button will show you the figures. It is composed of 6 main menus with submenus.

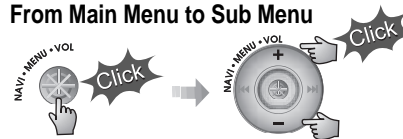


When you select the sub menu window, you can set the user's preference to be displayed.

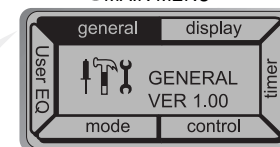
- Shift between Menu

◀ Press |◀◀ or ▶▶| button to move between main menu and sub menu.

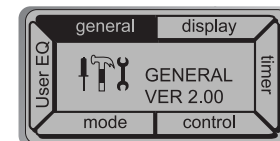
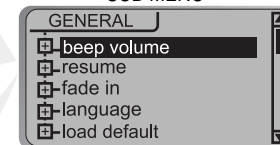
- From Main Menu to Sub Menu



▼MAIN MENU



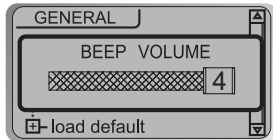
▼SUB MENU



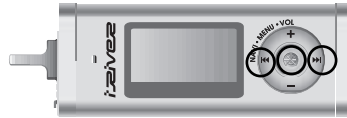
MENU

Enter Sub Menu





Each control option is configured by three buttons shown below.



Exit Sub Menu



Exit Function Control mode

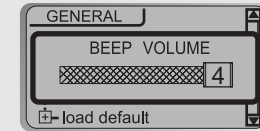


MENU(GENERAL)

GENERAL

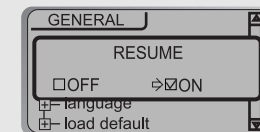
BEEP VOL

: Configure beep sound (ON/OFF) with volume level.



RESUME

: When activated, player returns to the same settings after STOP or Power OFF.



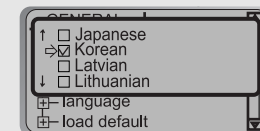
FADE IN

: When activated, volume increases gradually at playback mode to prevent sudden loudness.



LANGUAGE(Supports 35 languages)

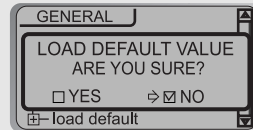
: When activated, displays proper fonts for tracks and ID3 tag information (which differs from PC operation system in different language).



MENU(General & Display)

LOAD DEFAULT VALUE

: Initialize to original factory setting.
 button operation order is as below.
 ▶|| (select default menu) → |◀◀ (select YES) → ▶|| (select YES : Initialization)



Menu(Display)

BACK LIGHT

You can adjust the time of Backlight.



LCD CONTRAST

: Adjust LCD contrast.

Contrast can be adjusted by using
 |◀◀ and ▶▶| buttons.



MENU(DISPLAY)

VISUALIZATION

: Visualize audio signal at play mode, elapsed time of playing track or free space of memory.

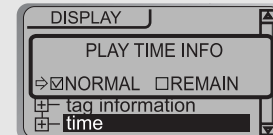
WAVEFORM ▶ 
 PROGRESSIVE ▶ 
 FREE SPACE ▶ 



TIME

Normal : display elapsed time.
 Remain : display remaining time.

Note : If the track format is VBR, the time may not be accurate.



TAG INFORMATION

ON : Displays track with ID3 tag information.
 OFF : Displays track with file name.

When set off the tag information, the track is playing and the next track can be displayed with ID3 tag information.



MENU(TIMER & CONTROL)

TIMER(Set Auto Power Off)

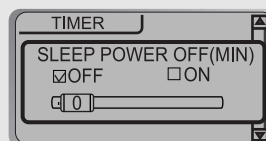
SLEEP POWER OFF

: Automatically power off after fixed time
(Time range can be set from 0 to 99 minutes by minute)

Use |◀◀ or ▶▶| button to adjust time.

▶ Available with both MP3 and FM Tuner

▶ When the power is off, the sleep power off setting goes back to Zero setting.

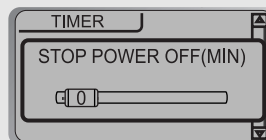


STOP POWER OFF

: Automatically power off at stop mode.
(1 ~ 60 minutes)

Use |◀◀ or ▶▶| button to adjust time.

▶ This function only works for MP3.



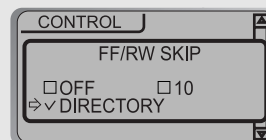
CONTROL

FAST SKIP

OFF : Skip does not activate.

10 : Playback previous or next 10th track.

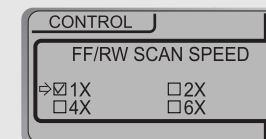
Directory : Skip to previous or next directory.



MENU(CONTROL)

SCAN SPEED

The fast scan speed can range from 1x/2x/4x/6x. It is useful when studying a language.

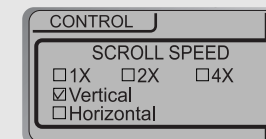


SCROLL SPEED

Adjust scan speed by 1x/2x/4x

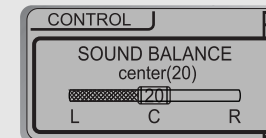
Vertical : The scroll goes from up to down

Horizontal : The scroll goes from the left to the right.



SOUND BALANCE

When the lever on the Sound Balance bar is moved to L(Left, 0), the sound output will be in the left earphone. When the lever on the Sound Balance bar is moved to R(Right, 40) the sound output will be in the right earphone. The default value is 20 and the sound output will be in the center.



AGC CONTROL

ON : When recording voice, automatically control recording level to record high quality sound.



MENU(PLAYBACK MODE)

MODE

REPEAT MODE / SHUFFLE MODE (Page 27~28)

: Available with multiple section, selected modes are activated on mode operation.

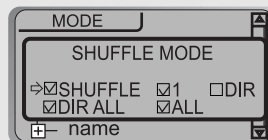
▼ ex



Pressing button to enter



And button for selection.



▶ Only the selected play mode will be applied when you press the MODE/REC button (For details, please refer Page 24)

INTRO MODE

Intro: Play beginning 10 seconds of each track.

Intro Highlight : play 10 seconds from the spot 1 minute played for each track.

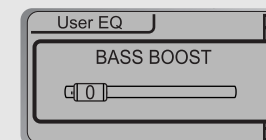


MENU(USER EQ)

Menu (User EQ)

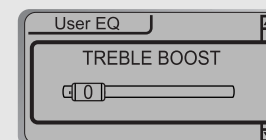
BASS BOOST

: Bass Boost lever is from 0 to 24dB.



TREBLE BOOST

: Treble boost level is from 0 to 6dB.



INITIALIZING/ MAKING NEW FOLDER/REFRESH

- 1 Double Click the Manager icon on the PC windows to operate Manager program.



- 2 Click "format" icon or select "format" in the file menu to format.



- 3 Click "New Folder" icon or select "New folder" in the file menu to make new folder.



- 4 Click "Refresh" icon to display contents of the player.

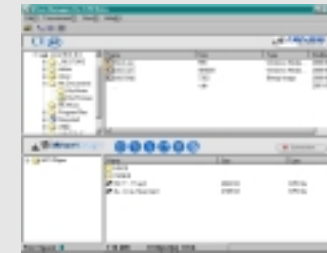


42

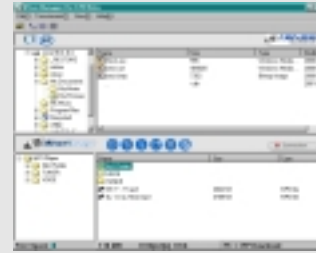
DOWNLOADING FROM THE PC

Activate Manager program after connecting USB cable between the player and PC.

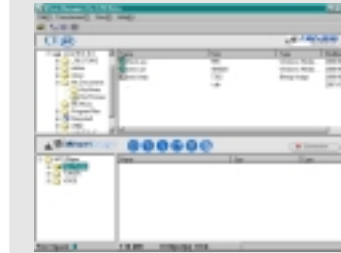
- 1 Double Click the Manager icon on the PC windows.



- 2 Select folder to saved in the PC.



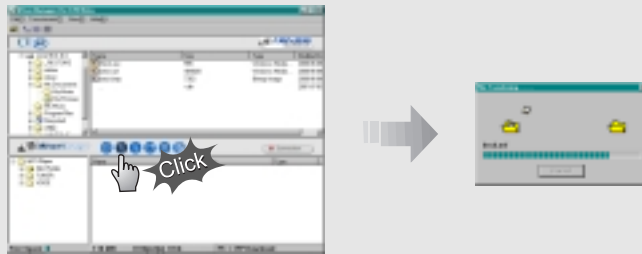
- 3 Select files in the player to save.



43

DOWNLOADING FROM THE PC

- 4 Click "Downpload" icon or select "Downpload" in the Transmission menu to download.

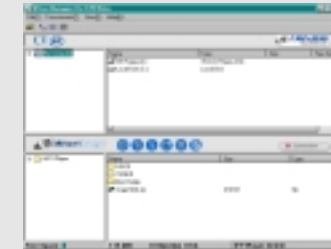


- You can not upload general music files from the player to the PC according to license.
You can upload files made by the player.

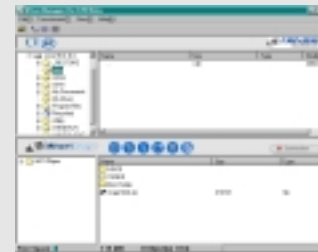
UPLOADING/ LISTENING MP3 ON THE PC

Activate Manager program after connecting USB cable between the player and PC.

- 1 Double Click the Manager icon on the PC windows.



- 2 Select folder to be saved in the PC.

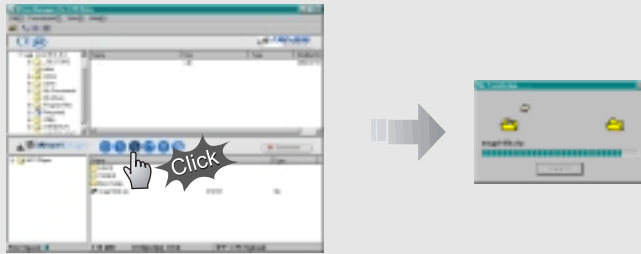


- 3 Select files in the player to save.



UPLOADING/ LISTENING MP3 ON THE PC

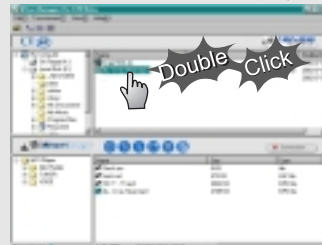
- 4 Click "Upload" icon or select "Upload" in the Transmission menu to upload.



- 5 Double Click the "Window Searcher" icon on the PC windows.



- 6 Select files to play. Double Click the desired file to play.



46

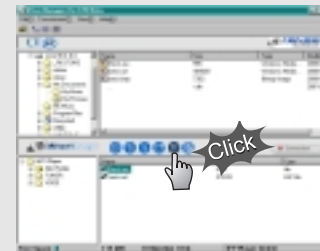
DELETING FILES ON THE PC

Activate Manager program after connecting USB cable between the player and PC.

- 1 After starting the "Manager" program, select files to delete.



- 2 Click "Delete" icon or select "Delete" in the File menu to delete.



- 3 Click "yes".



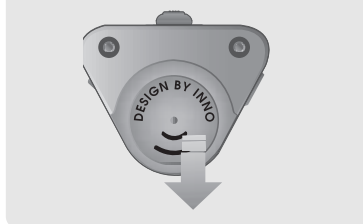
Note
You can also delete by clicking right button of mouse after selecting files.

47

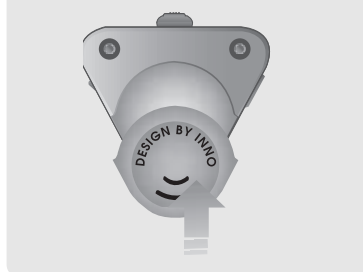
POWER SUPPLY(BATTERY)

Inserting a battery

Open the battery cover.

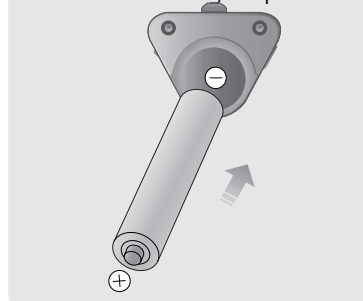


Close the battery cover.



Insert the batteries.

Be sure to match the + and - ends of the batteries with the diagram inside the battery compartment.



Note

- To avoid corrosion, remove the batteries if the remote controller is not to be used for a long time.
- Remove dead batteries immediately to avoid damage from corrosion.
- When corrosion occurs, wipe dry immediately with a dry cloth and insert a new battery.

48

TROUBLE SHOOTING

Should any problem persist after you have checked these symptoms, consult your iRiver dealer.

No Power On	<ul style="list-style-type: none"> ■ Check whether the batteries have been inserted in proper polarity. ■ Check whether the HOLD switch in player or remote is ON (Switch to OFF position) ■ Check whether the rechargeable batteries are not charged.
No Sound or noise is heard	<ul style="list-style-type: none"> ■ Check whether VOLUME is set to "0". Connect the earphones/remote plug firmly. ■ Check whether plug is dirty. Clean the plug with a dry and soft cloth. ■ Corrupted MP3, WMA file may have a static noise or sound cut off.
Characters in LCD are corrupted.	<ul style="list-style-type: none"> ■ Check out Menu ▶Display ▶Language and confirm whether the right language has been selected.
FM is not heard well.	<ul style="list-style-type: none"> ■ Adjust the position of the player and earphone. Turn off the power of other electric devices nearby the player. If it does work, please move away the player and work it from a distance. Earphone does function as the antenna.
Failed download of MP3 file	<ul style="list-style-type: none"> ■ Check the condition of the battery or the USB connection between your PC and the player.

49

PRECAUTIONS

Safety

- Vibration experienced during walking or exercising will not affect the player. However, dropping the player or dropping a heavy object on the player may result in damage or sound distortion.
- Avoid falling any liquid into the player.
If water or any other liquid enters the case, take this unit to an authorized service center for inspection.
- Do not leave the console in a location near heat sources, or in a place subject to direct sunlight, excessive dust or sand, moisture, rain, mechanical shock, unlevelled surface, or in a car with its windows closed.
- To avoid corrosion, remove the batteries if the remote controller is not to be used for a long time.

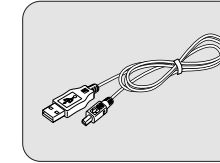
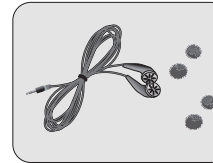
On Headphones and Earphones

- **Road Safety**
Do not use headphones/earphones while driving, cycling, or operating any motorized vehicle. It may create a traffic hazard and is illegal in some areas. It can also be potentially dangerous to play your headsets at high volume while walking, especially at pedestrian crossings. You should exercise extreme caution or discontinue use in potentially hazardous situations.
- **Preventing hearing damage**
Avoid using headphones/earphones at high volume. Hearing experts advise against continuously loud and extended play. If you experience a ringing in your ears, reduce volume or discontinue use.
- **Consideration for others**
Keep the volume at a moderate level. This will allow you to hear outside sound and to be considerate to the people around you.

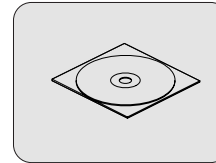
50

ACCESSORIES

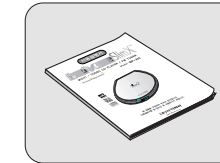
- 1 Earphone/Earphone sponge 2 USB cable



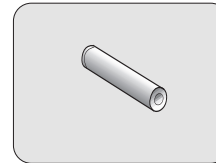
- 3 Installation CD



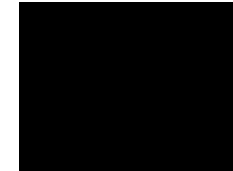
- 4 User manual/Warranty card



- 5 Battery(AA type 1EA)



- 6 Necklace for carrying



51

SPECIFICATION

☞ Distributing copies of MP3 tracks without permission is a violation of international copyright laws.

	iFP-120	iFP-140	iFP-180
Memory	32 MB	64 MB	128 MB
Color	Gun Metal	White Pearl	Bright Silver
Color Code	MA8288	MA8287	MC9905
With FM Tuner	iFT-120T	iFT-140T	iFT-180T
Without FM Tuner	iFT-120	iFT-140	iFT-180

Category	ITEM	Specifications
FM TUNER	FM Frequency range	87.5 MHz ~ 108 MHz
	Headphone Output	(L)10 mW + (R)10 mW (16 Ohm) max. Volume
	S/N ratio	60 dB
	Antenna	Headphone/Earphone-Cord Antenna
	Dimension	31 x 28.5 x 82 mm(95mm : With Ring for Necklace)
	Weight	52 g (without battery)
	Battery	1 AA size Alkaline battery
Audio	Frequency range	20 Hz ~ 20 KHz
	Headphone Output	(L)10 mW + (R)10 mW (16 Ohm) max. Volume
	S/N ratio	90 dB(MP3)
FILE SUPPORT	File Type	MPEG 1/2/2.5 Layer 3, WMA, ASF
	Bit Rate	8 Kbps ~ 320 Kbps
	Tag Info	ID3 V1, ID3 V2 2.0, ID3 V2 3.0, ID 3 V2 4.0
	LCD	Full Graphic 4 Line with Backlight
	Language	36 Language
	Voice Recording	Approx. 2:45 hrs (32kbps, 32 MB) Approx. 4:30 hrs (32kbps, 64 MB) Approx. 9:00 hrs (32kbps, 128 MB)
	Max. Playtime	Approx. 18 hours(128 kbps, MP3)
	USB	USB 1.1
	Operational Temperature	0 ℃ ~ 40 ℃