

Customized

Application Report

Customer	<i>아이리버</i>
Model	<i>TD100</i>
Application	<i>Bluetooth</i>
Antenna type	<i>FPCB+Cable Ass'y Type</i>
Report No.	<i>#2-1</i>
Date	<i>2012. 07. 16</i>



Amotech / Antenna Gr.

1. Summary of the antenna test

Confidential

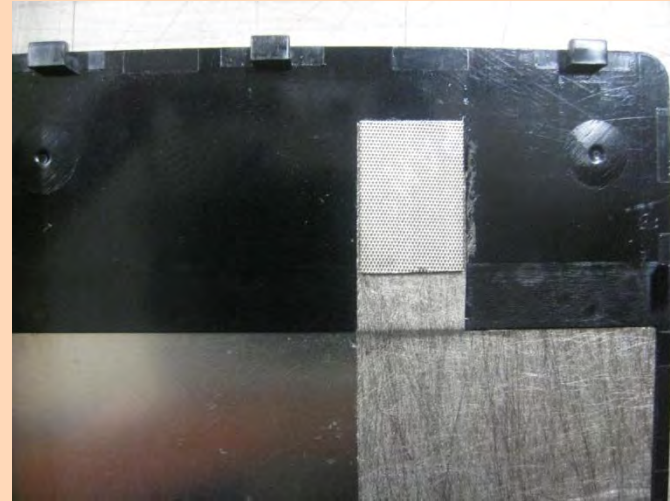
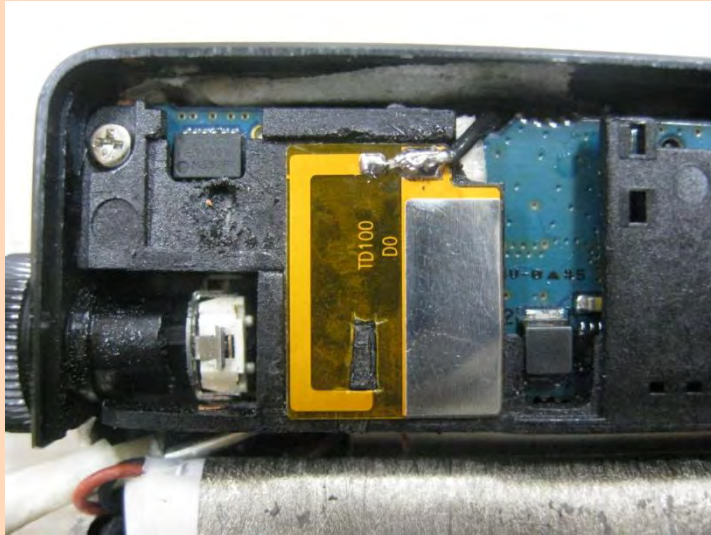
1) Test Condition

Test No	Antenna Type	Condition
#2-1	FPCB+Cable Ass'y Type	SET Matching (Series = 0Ω)

2) Radiation Gain Table

Test No	Freq (GHz)	Efficiency (%)	Avg. Gain (dBi)	Peak Gain (dBi)
#2-1	2400 MHz	30.3	-5.2	0.9
	2442 MHz	32.0	-5.0	2.4
	2485 MHz	24.8	-6.1	2.2

3) Remark

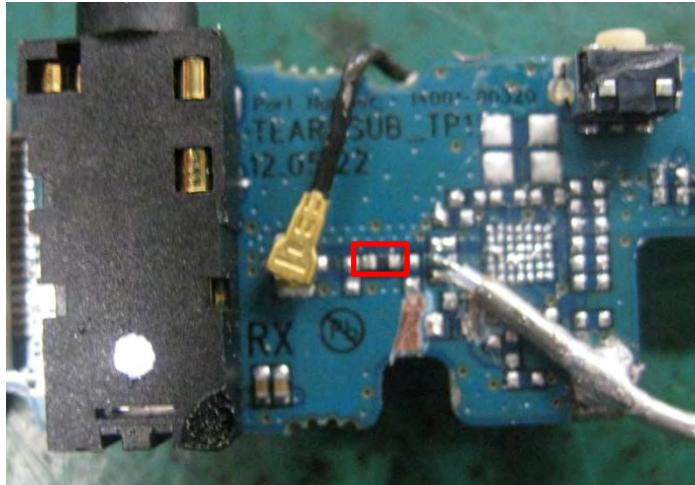


#2-1 : 최종 Rear Case 적용
Sample 안테나 Pattern
3.0mm Cut

2. TEST #2-1

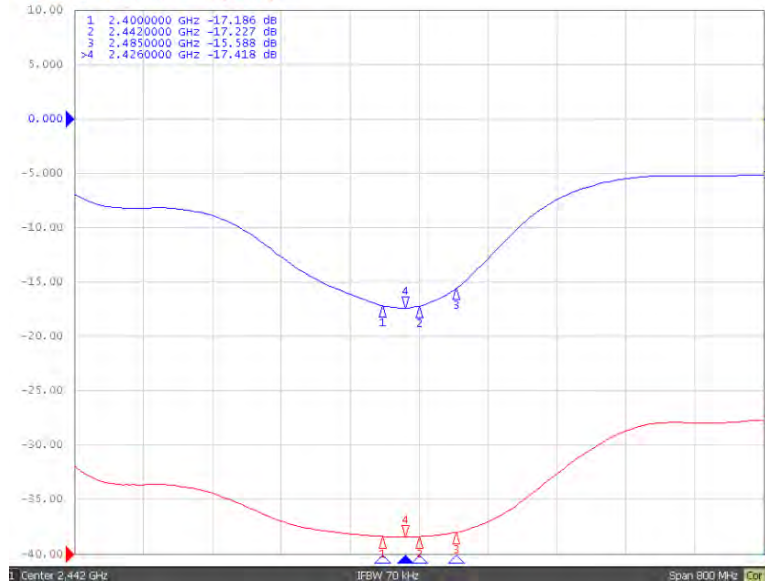
Confidential

1) 안테나 Layout 및 S-Parameter

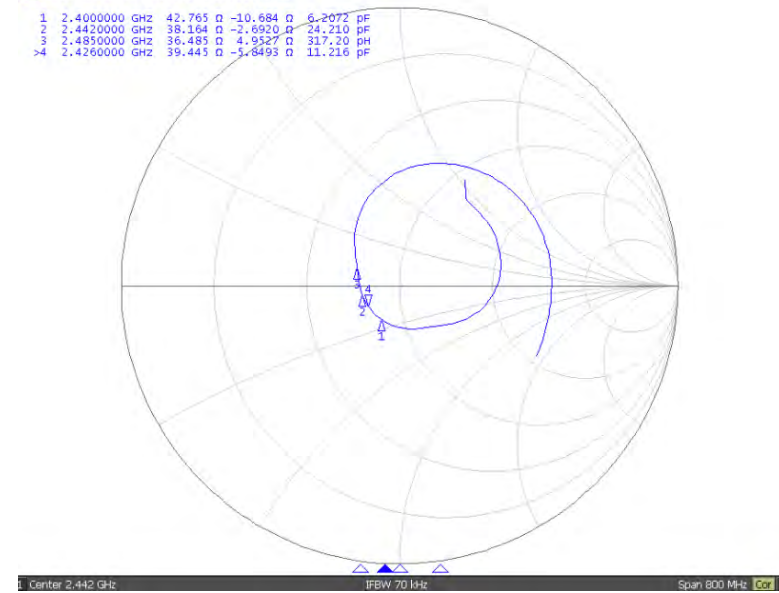


Test No.	#2-1
Antenna	FPCB+Cable Ass'y
Series	0Ω

S11 Log Mag 5.000dB/ Ref 0.000dB [F1]
TP1 S11 SWR 1.000/ Ref 1.000 [F1 De]



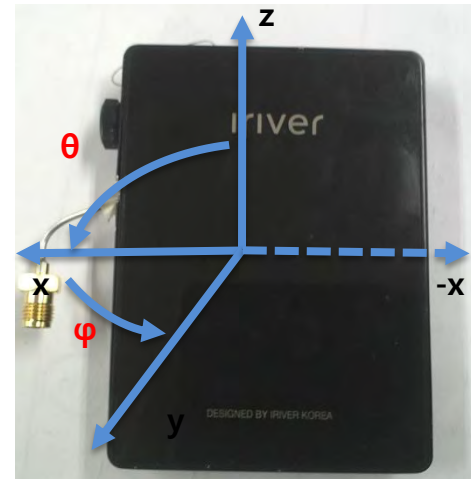
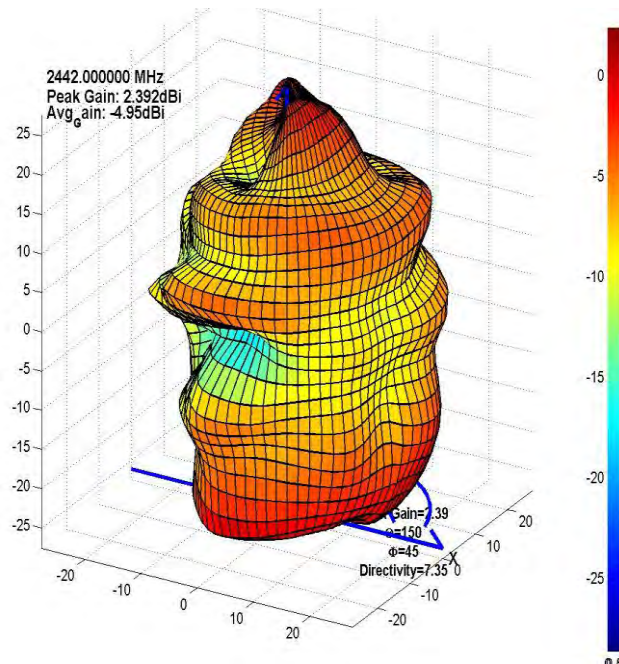
S11 Smith (R+jX) Scale 1.000u [F1]



2. TEST #2-1

Confidential

2) Radiation Gain



Test No	Freq (GHz)	Efficiency (%)	Avg. Gain (dBi)	Peak Gain (dBi)
#2-1	2400 MHz	30.3	-5.2	0.9
	2442 MHz	32.0	-5.0	2.4
	2485 MHz	24.8	-6.1	2.2