

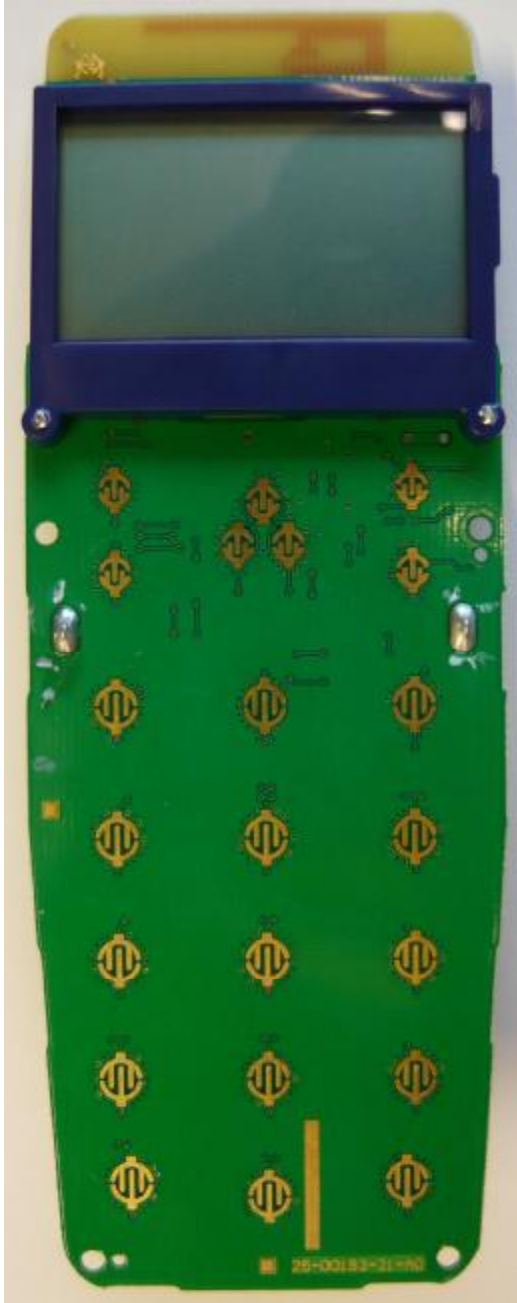
Internal Photos of Response LE



Bottom of PCBA as viewed with back cover removed. PCBA is screwed to front cover.



Bottom of PCBA as viewed with back cover removed. PCBA is removed from front cover.



Top of PCBA after disassembly from top cover.



Top cover of Response LE (inside view).



Top cover of Response LE (inside view, with keypad removed).