


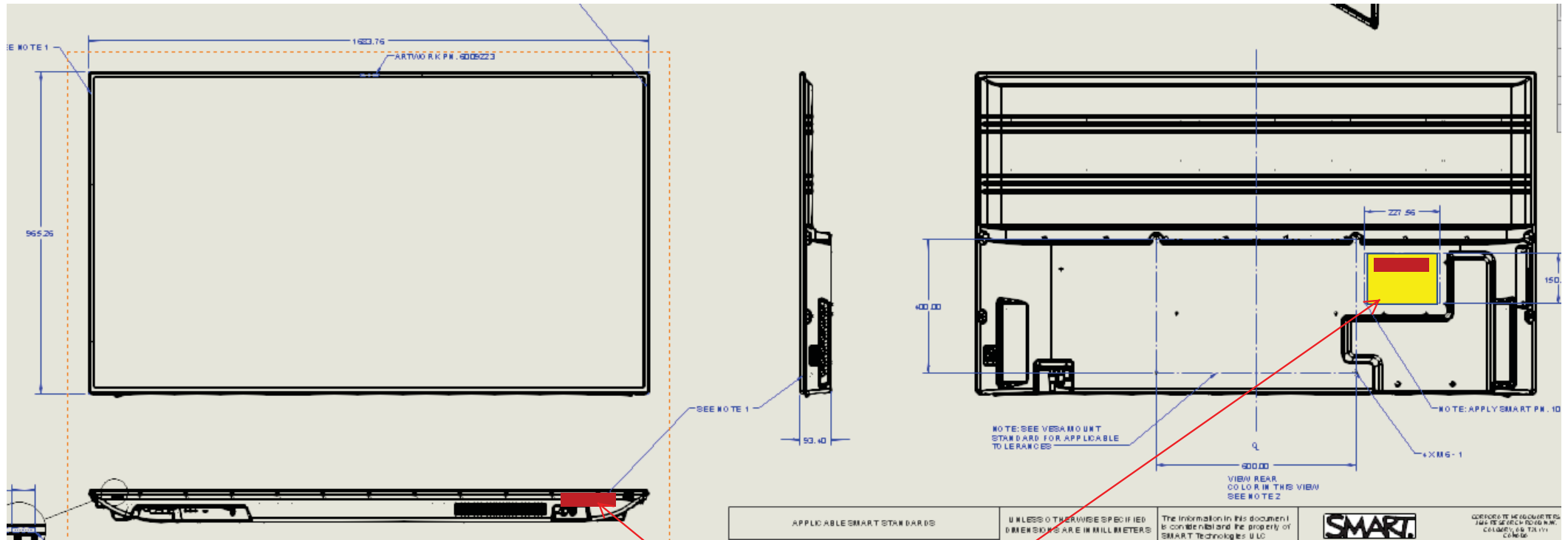
Serial number label will contain unit specific detail:

- Part number and revision.
- The part number and revision format will be 1029675-XX where -XX is the current revision of the BOM
- Serial Number (Human readable and bar code), F11xxxxExxxx as per 6001110. 6th to 8th digits shall use MDD format to represent the date of manufacture.
- Date of Manufacture (Human readable and bar code). Formated as YYYYMMDD.
- Concentrated 2D Datamatrix Barcode. Format as per 6001135.

1. MATERIAL: 2.0 Mil white, coated, polyester
2. Adhesive: 0.8 Mil acrylic adhesive
3. This is a two colour label: Black text on white background
4. Printing process and label material to comply with durability test specification Section 1.7.11, IEC 60950
5. This part must comply with SMART Specification 6000565-DOC (Spec, Material Composition and Restrictions)

Page 1 - General specification  
 Page 2 - Artwork  
 Page 3 - Die cut

TD: 600859-01			
Units:			
Scale: Do Not scale			
Tolerance:			
Cutting: +/- 0.25 mm			
Printing: +/- 0.25 mm			
01 - Initial release			
This product must comply with SMART specification 6000565-DOC (Spec, Material Composition and Restrictions).			
Legal Notice			
The information in this document is confidential and the property of SMART Technologies ULC ("SMART"). The receiving party shall not use, disclose to any third party or make any copies of this information without the prior written consent of SMART.			
© SMART Technologies ULC			
 SMART Technologies 3636 Research Road NW Calgary AB T2L 1Y1 Canada			
Rev.:	By:	mm/dd/yy	Apprv'd
01	CB	03/03/2017	BG
Page: 1 of 3			
Description: Label, Serial Number, SBD-2075			
Part #: 1030269			



label location