



## **AN 80i Configuration Instructions**

## Configuration Instructions AN80i

For connections please refer to **Figure 1**.

For the link distance of three meters and antenna gain of 9 or 15 dBi, 10dB attenuator should be used on the client side.

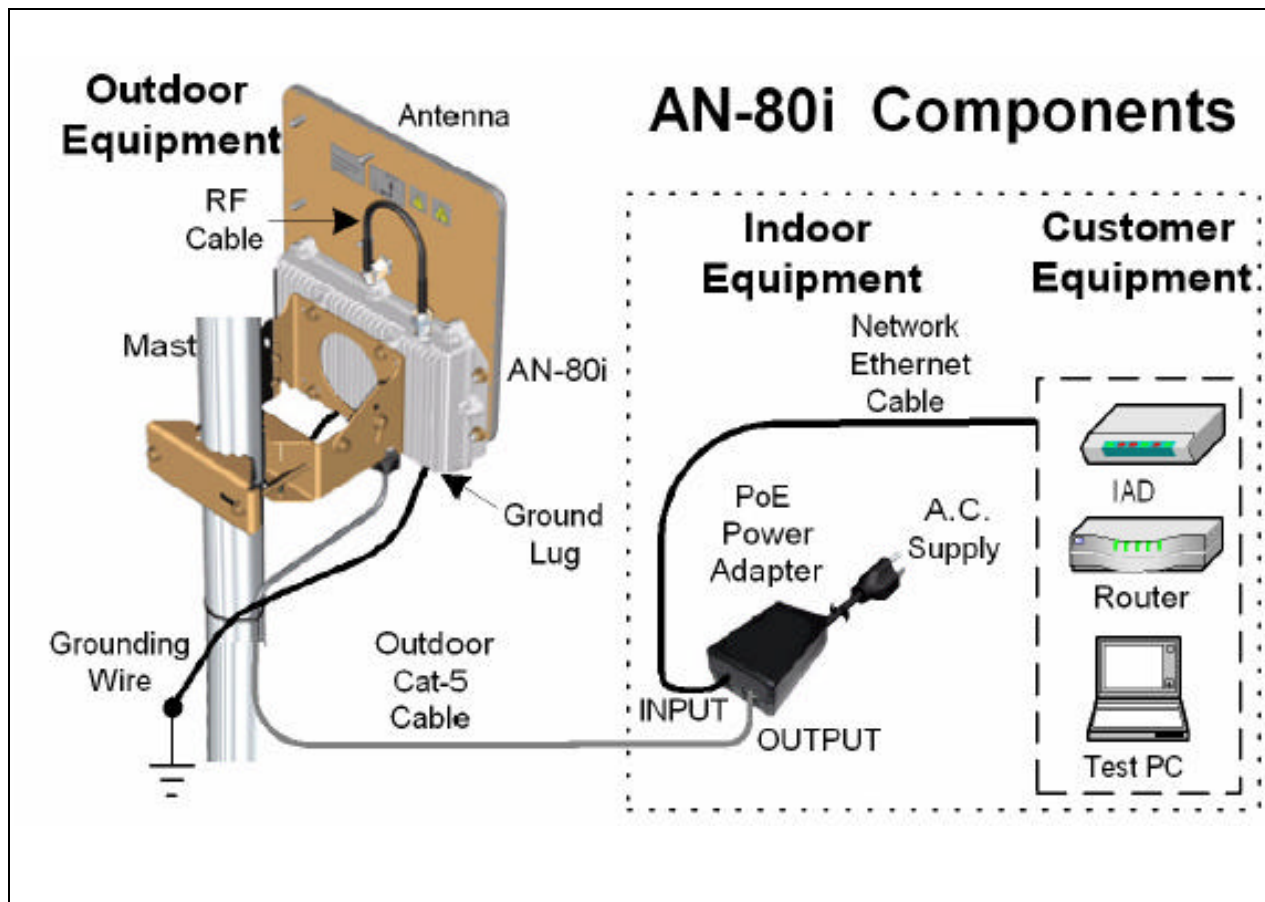
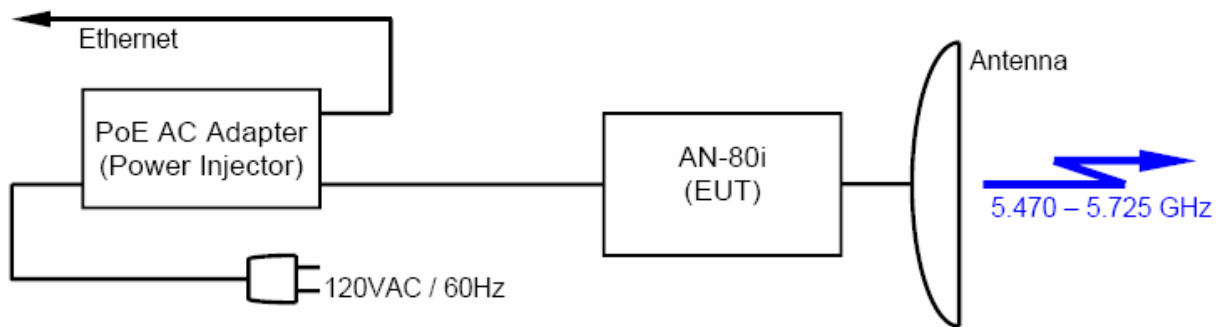


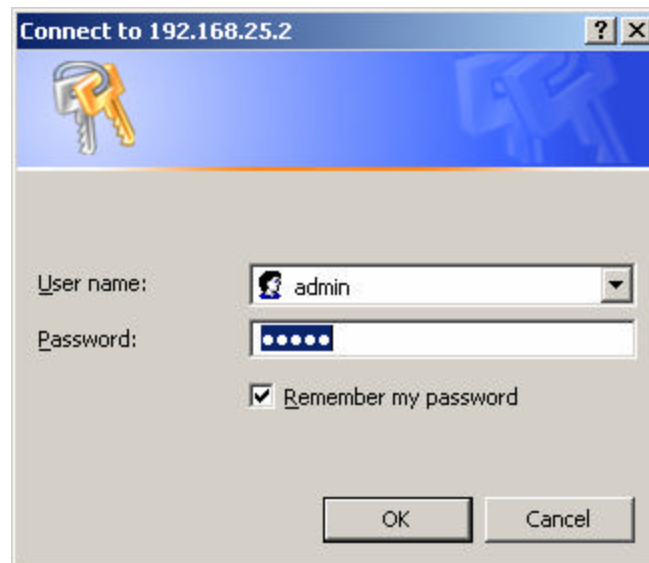
Figure 1



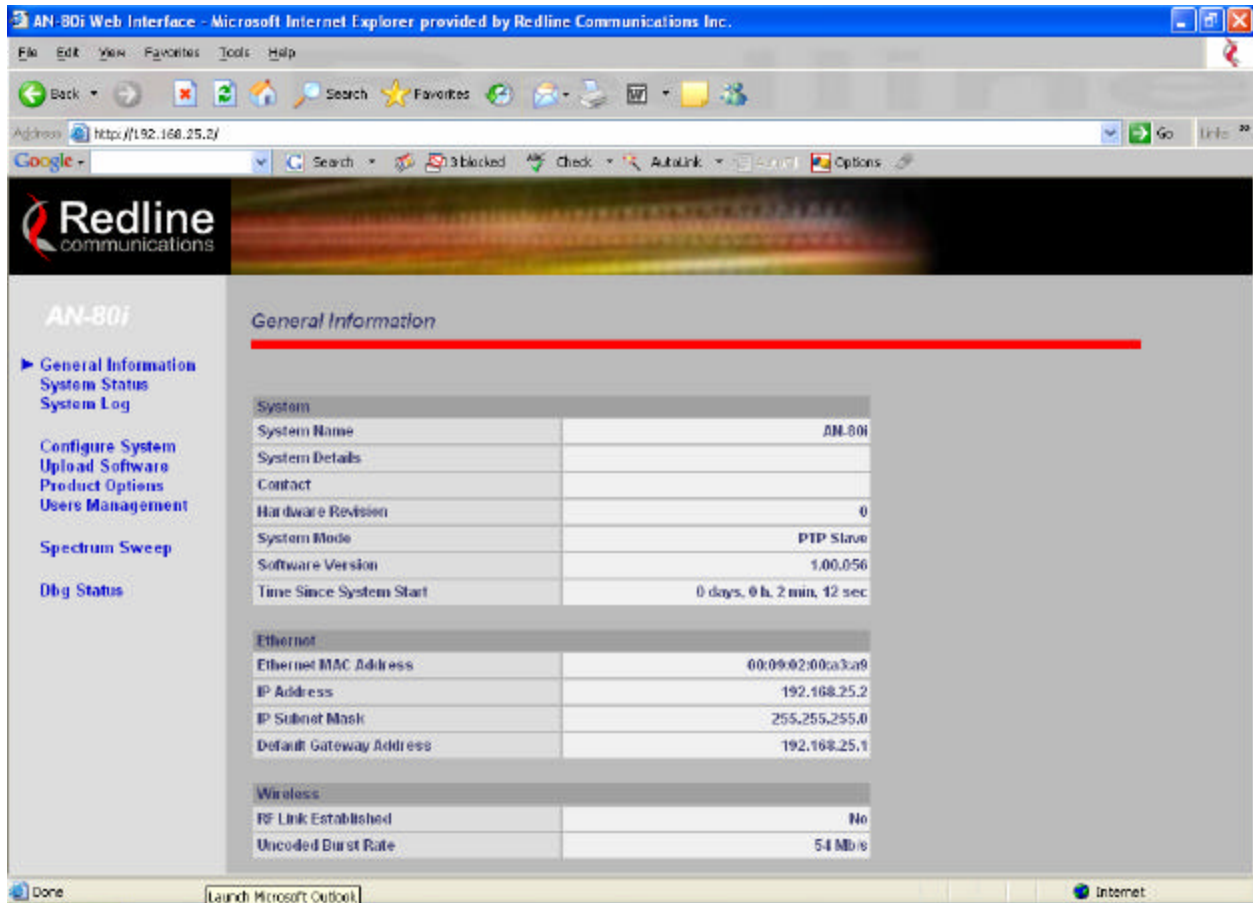
**Figure 2: Block Diagram of the EUT**

To access AN80i using GUI:

- Open Internet Explorer and access AN80i Web page at IP address <http://192.168.25.3> or <http://192.168.25.2> ( IP address of each unit is given on the label attached to the unit)
- Login using **admin** as User Name and Password.

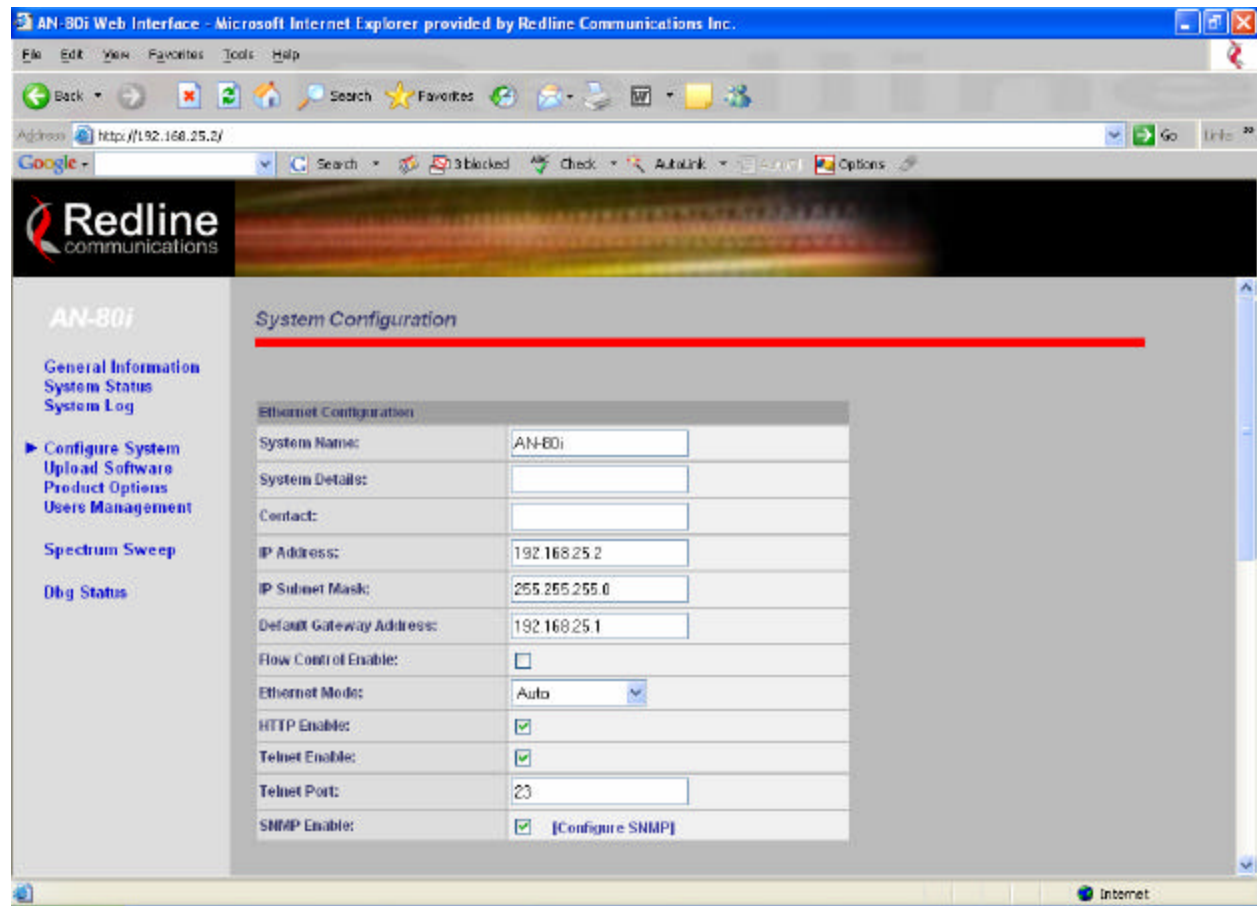


**Figure. 3 Login**



**Figure. 4 General Information**

- From the Web page menu select **Configure System** to set RF parameters.
- The frequency can be set in steps of 2.5MHz.
- Please note that antenna gain should be entered according to the antenna used.
- After changes are done, click on **Save** button at the bottom of the page.




**Figure. 5 Configure System**

AN-801 Web Interface - Microsoft Internet Explorer provided by Redline Communications Inc.

File Edit View Favorites Tools Help

Back Forward Stop Reload Search Favorites

Address http://192.168.25.2/ Go Links



**AN-801**

General Information  
System Status  
System Log

► Configure System  
Upload Software  
Product Options  
Users Management

Spectrum Sweep

Dbg Status

RF Freq. [MHz]:	5595.0	Auto scan: <input type="checkbox"/>
Tx Power[dBm]:	15	
DFS Action:	Tx Off	
Antenna Gain:	none	
ATPC Enable:	Tx Off	
	Chg Freq	
Adaptive Modulation:	<input checked="" type="checkbox"/>	
Modulation Reduction Level:	2	
Uncoded Burst Rate [Mbits]:	27 Mbits	
Channel Width [MHz]:	10	
Ethernet Follows Wireless:	<input type="checkbox"/>	
System Mode:	PTP Master	
Software Version:	1.10.172	
Encryption Enable:	<input type="checkbox"/>	
Encryption Key:	00 00 00 00 00 00	
Link Length Measurement Mode:	Auto	
Link Length:	0	
Link Length Measurement Unit:	Mile	
Antenna Alignment Buzzer Enable:	<input type="checkbox"/>	
Radio Enable:	<input checked="" type="checkbox"/>	

Done Internet

Figure. 6 Configure System (continued)

*TxOff* or *Chg Freq* should be selected depending on the test performed  
When *Chg Freq* is selected Client should have *Auto scan* enabled.

The link status can be checked by selecting System Status from the Web page menu

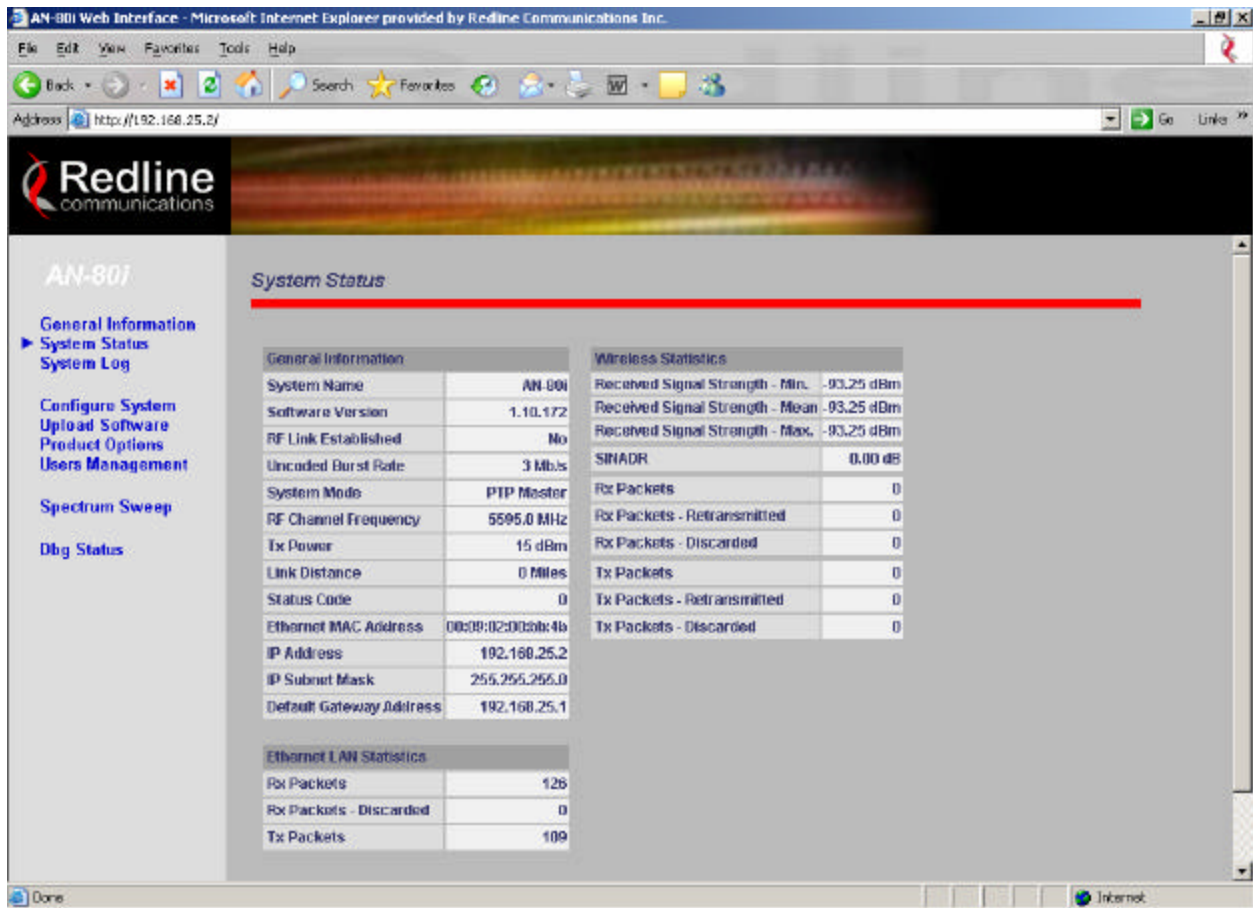
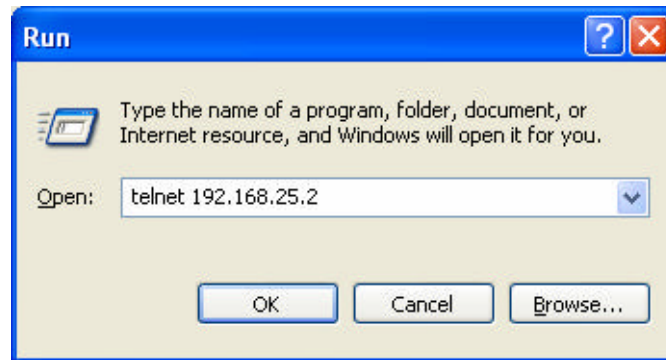


Figure. 7 System Status

## Telnet Session

Start a telnet session by entering the following commands:

telnet **192.168.25.2** or **192.168.25.3**



**Figure. 8 Telnet**

Login using **debug** as User Name and Password

At the prompt type **dbg dfs** to enter DFS debug mode

Commands available for testing purpose:

<b>evtime</b>	Evaluation time 60 sec. default value Should not be set less than 10sec.
<b>resetevents</b>	To reset number of events detected
<b>txoffdis 1</b> or <b>0</b>	To disable/enable TxOff after radar detection
<b>txofftime</b>	To reduce TxOff time after radar detection In sec. 1800 default value