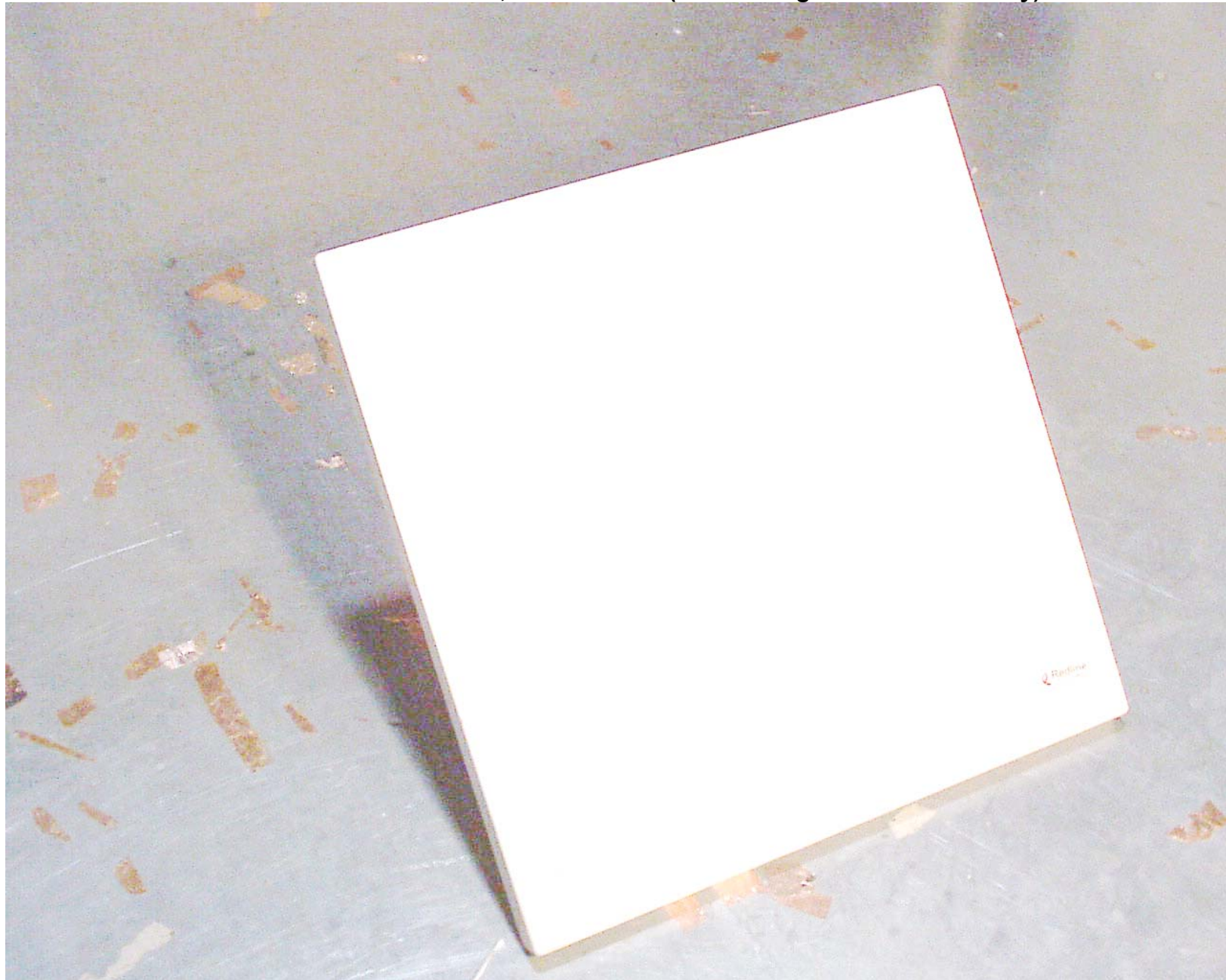


ANNEX 2 – EXTERNAL PHOTOGRAPHS

**REDLINE COMMUNICATIONS AN-30 SYSTEM (5.735-5.815 GHz), Model AN-30
ANTENNAS WITH MAXIMUM GAIN WITHIN ITS FAMILY**

**PHOTO# 6
FCC ID: QC8-AN30
IC: 4310A-AN30**

MTI Antenna Model 486001, Gain: 28 dBi (maximum gain within its family)

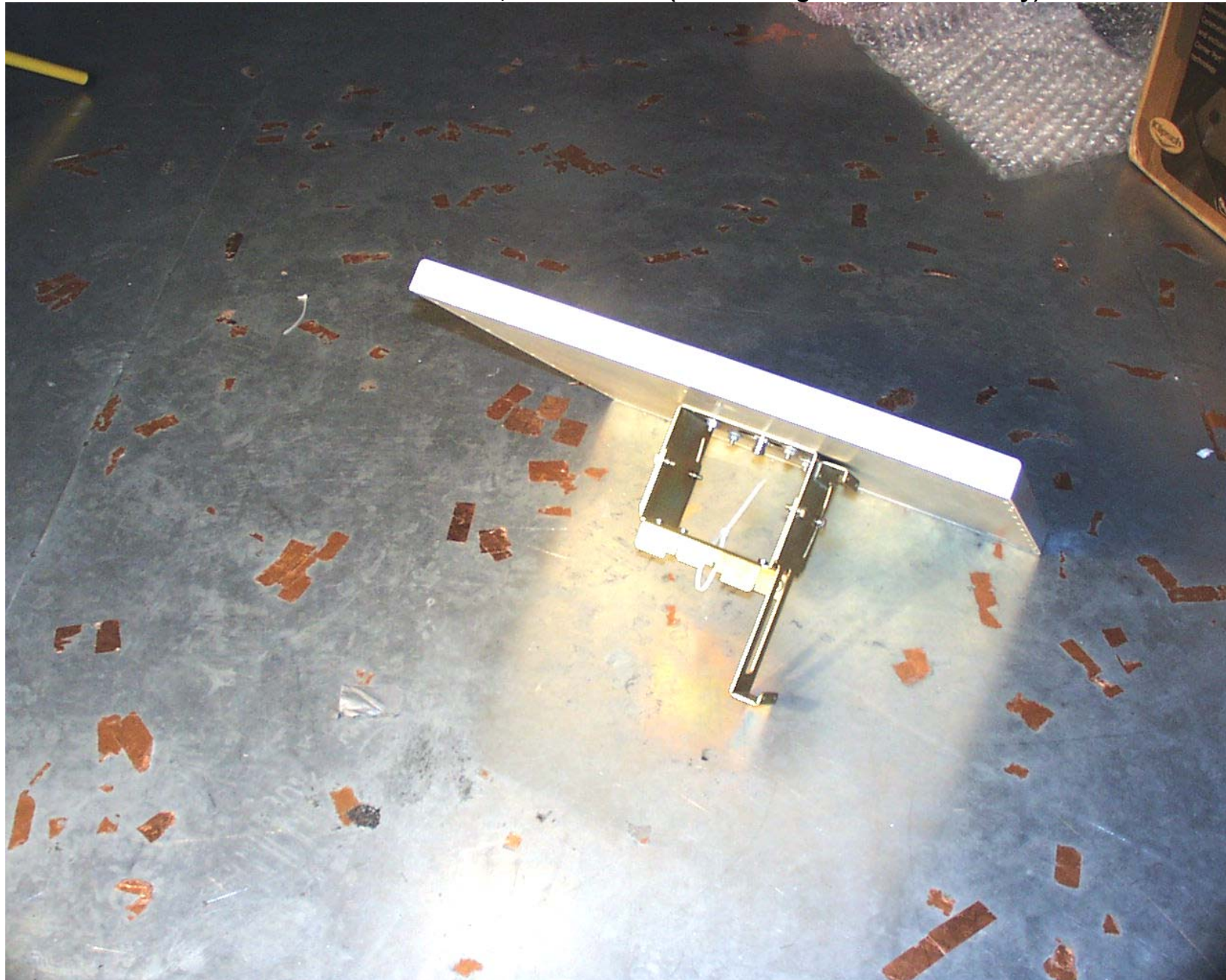


ANNEX 2 – EXTERNAL PHOTOGRAPHS

**REDLINE COMMUNICATIONS AN-30 SYSTEM (5.735-5.815 GHz), Model AN-30
ANTENNAS WITH MAXIMUM GAIN WITHIN ITS FAMILY**

**PHOTO# 7
FCC ID: QC8-AN30
IC: 4310A-AN30**

MTI Antenna Model 486001, Gain: 28 dBi (maximum gain within its family)



ANNEX 2 – EXTERNAL PHOTOGRAPHS

**REDLINE COMMUNICATIONS AN-30 SYSTEM (5.735-5.815 GHz), Model AN-30
ANTENNAS WITH MAXIMUM GAIN WITHIN ITS FAMILY**

**PHOTO# 8
FCC ID: QC8-AN30
IC: 4310A-AN30**

Radiowave Antenna Model SP4-5.2NS, Gain: 34.8 dBi (maximum gain within its family)



ANNEX 2 – EXTERNAL PHOTOGRAPHS

**REDLINE COMMUNICATIONS AN-30 SYSTEM (5.735-5.815 GHz), Model AN-30
ANTENNAS WITH MAXIMUM GAIN WITHIN ITS FAMILY**

**PHOTO# 9
FCC ID: QC8-AN30
IC: 4310A-AN30**

Radiowave Antenna Model SP4-5.2NS, Gain: 34.8 dBi (maximum gain within its family)



ANNEX 2 – EXTERNAL PHOTOGRAPHS

**REDLINE COMMUNICATIONS AN-30 SYSTEM (5.735-5.815 GHz), Model AN-30
ANTENNAS WITH MAXIMUM GAIN WITHIN ITS FAMILY**

**PHOTO# 10
FCC ID: QC8-AN30
IC: 4310A-AN30**

Radiowave Antenna Model SEC-55V-60-17, Gain: 17 dBi (maximum gain within its family)

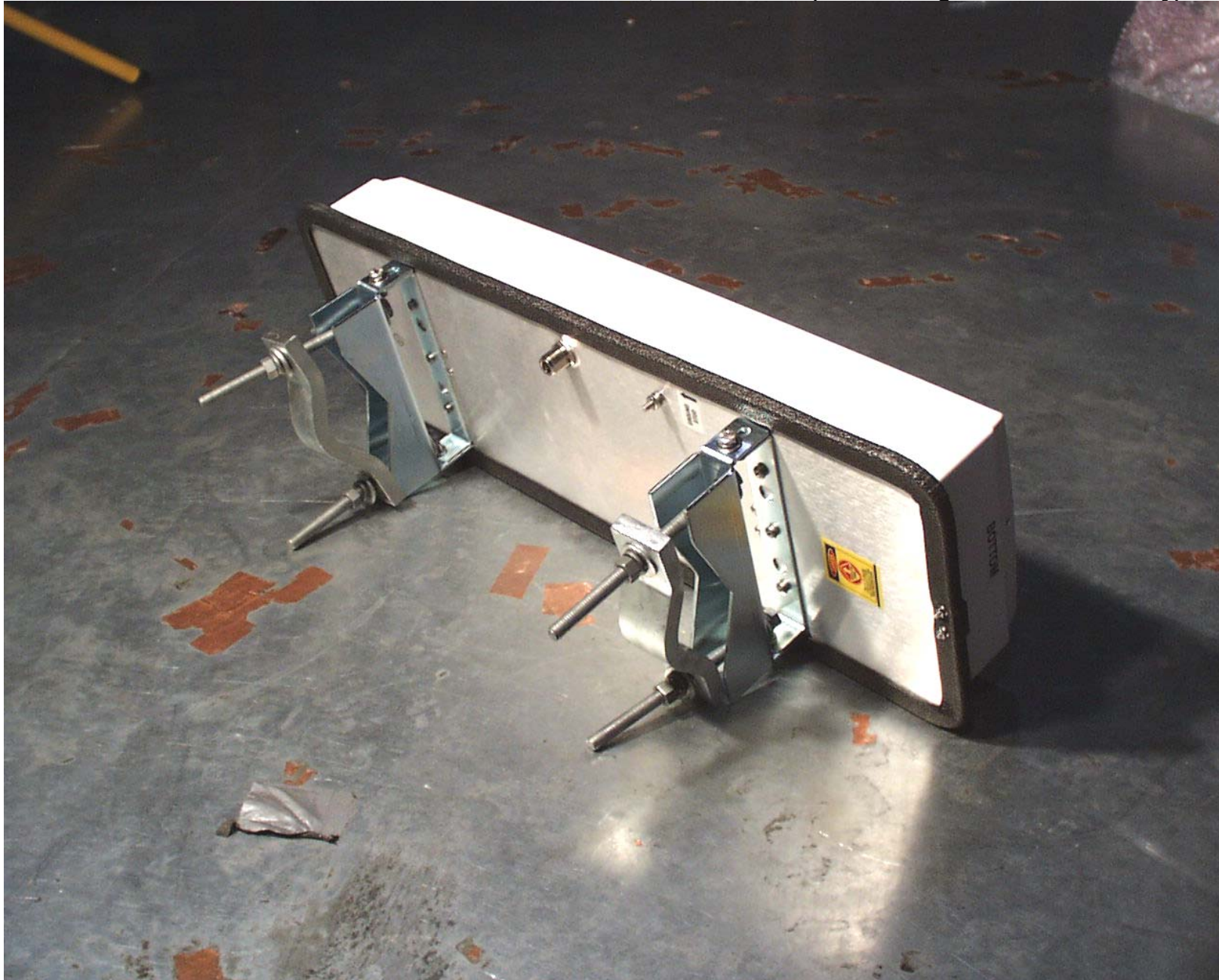


ANNEX 2 – EXTERNAL PHOTOGRAPHS

**REDLINE COMMUNICATIONS AN-30 SYSTEM (5.735-5.815 GHz), Model AN-30
ANTENNAS WITH MAXIMUM GAIN WITHIN ITS FAMILY**

**PHOTO# 11
FCC ID: QC8-AN30
IC: 4310A-AN30**

Radiowave Antenna Model SEC-55V-60-17, Gain: 17 dBi (maximum gain within its family)



ANNEX 2 – EXTERNAL PHOTOGRAPHS

**REDLINE COMMUNICATIONS AN-30 SYSTEM (5.735-5.815 GHz), Model AN-30
ANTENNAS WITH MAXIMUM GAIN WITHIN ITS FAMILY**

**PHOTO# 12
FCC ID: QC8-AN30
IC: 4310A-AN30**

MaxRad Antenna Model MPR68031PTNF, Gain: 31.0 dBi (maximum gain within its family)

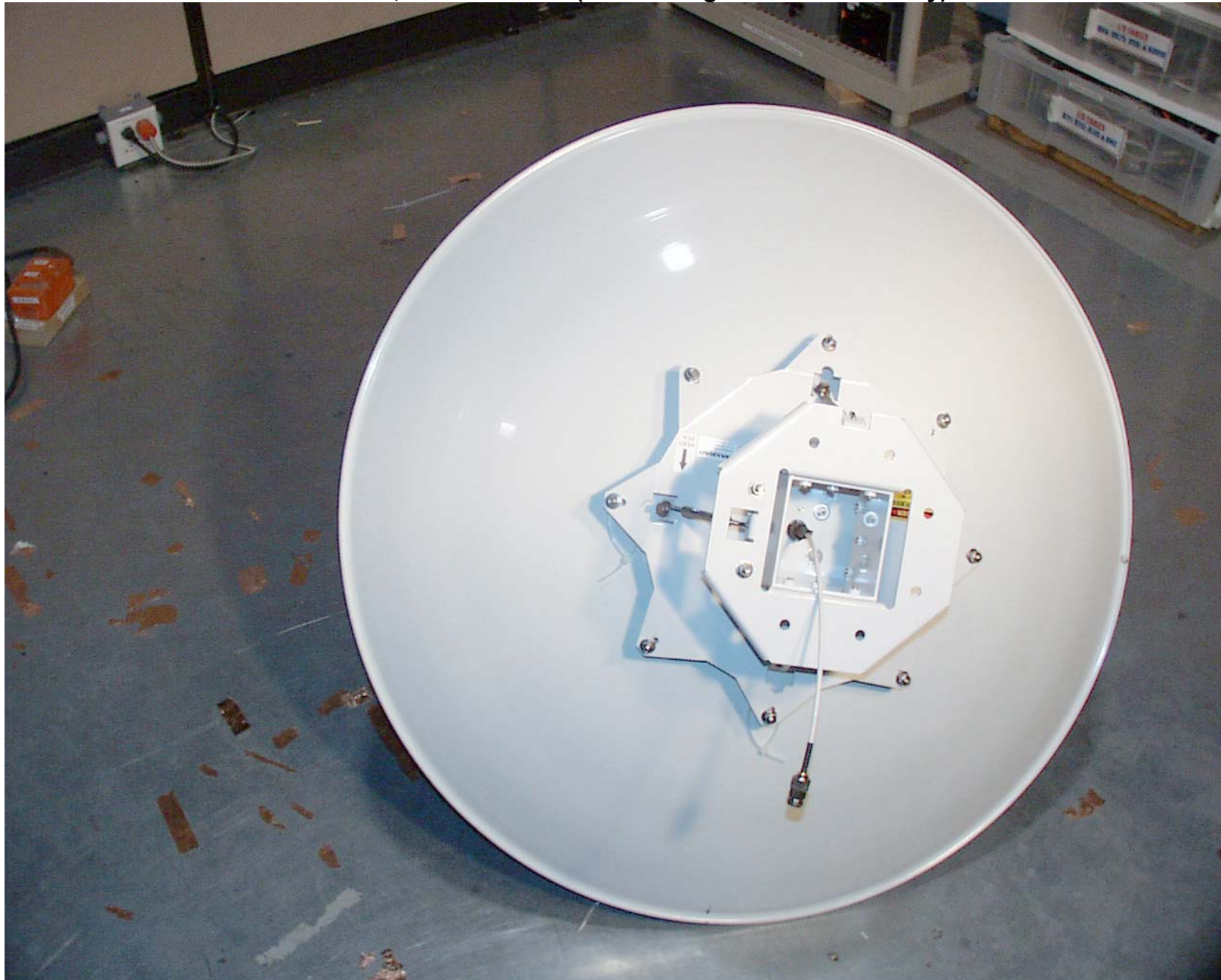


ANNEX 2 – EXTERNAL PHOTOGRAPHS

**REDLINE COMMUNICATIONS AN-30 SYSTEM (5.735-5.815 GHz), Model AN-30
ANTENNAS WITH MAXIMUM GAIN WITHIN ITS FAMILY**

**PHOTO# 13
FCC ID: QC8-AN30
IC: 4310A-AN30**

MaxRad Antenna Model MPR68031PTNF, Gain: 31.0 dBi (maximum gain within its family)



ANNEX 2 – EXTERNAL PHOTOGRAPHS

**REDLINE COMMUNICATIONS AN-30 SYSTEM (5.735-5.815 GHz), Model AN-30
ANTENNAS WITH MAXIMUM GAIN WITHIN ITS FAMILY**

**PHOTO# 14
FCC ID: QC8-AN30
IC: 4310A-AN30**

Tongyu Antenna Model TDJ-5818AM-60, Gain: 18.0 dBi (maximum gain within its family)



ANNEX 2 – EXTERNAL PHOTOGRAPHS

**REDLINE COMMUNICATIONS AN-30 SYSTEM (5.735-5.815 GHz), Model AN-30
ANTENNAS WITH MAXIMUM GAIN WITHIN ITS FAMILY**

**PHOTO# 15
FCC ID: QC8-AN30
IC: 4310A-AN30**

Tongyu Antenna Model TDJ-5818AM-60, Gain: 18.0 dBi (maximum gain within its family)

