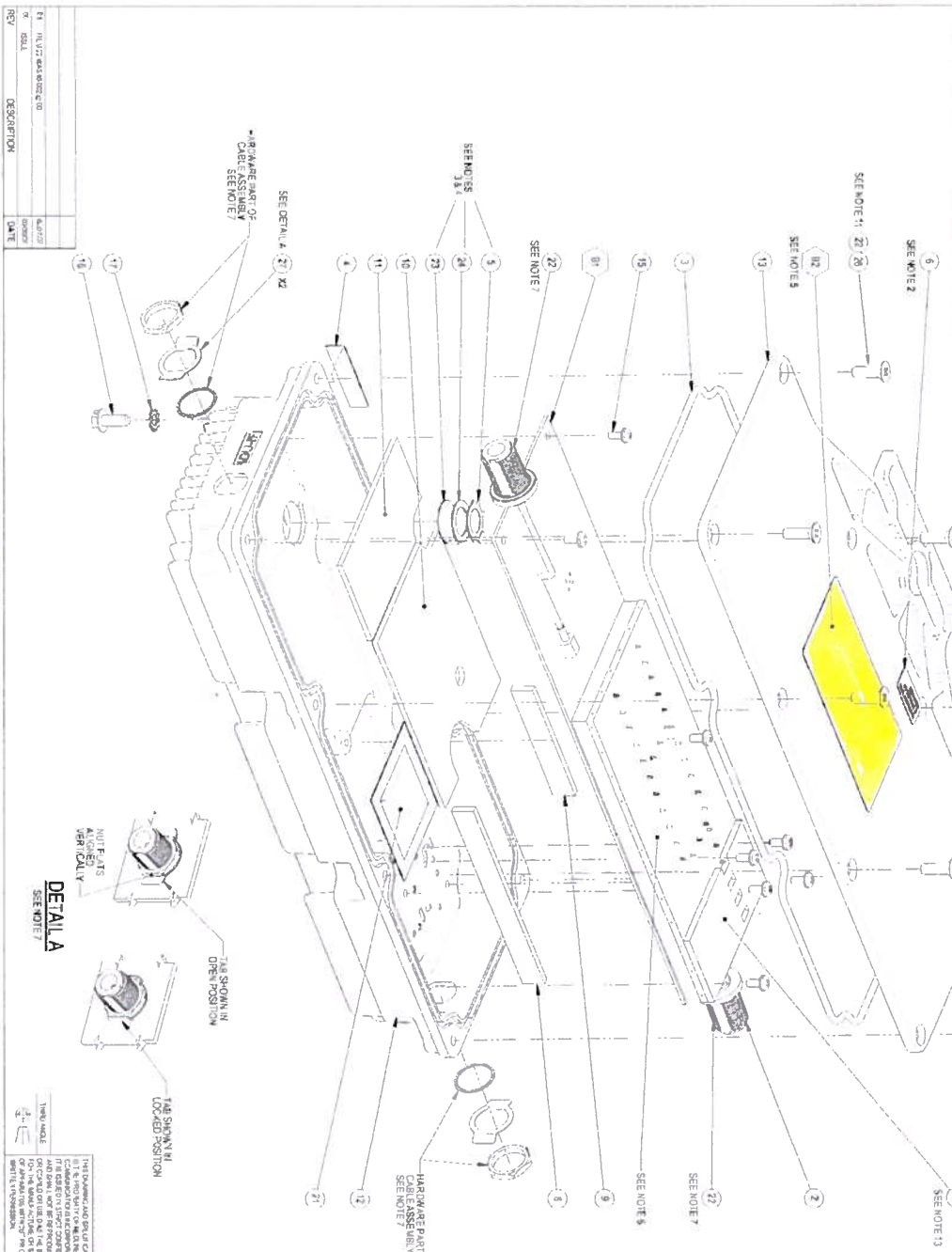


01	80-00219-02	UNIQUE PARTS LIST CHART	REV	DATE	DESCRIPTION	QTY	UNIT PRICE	TOTAL PRICE	AMOUNT	DATE
<p>UNIQUE PARTS LIST CHART</p> <p>REV: 01 DATE: 11/17/22 DESCRIPTION: DRAWING ASSY, GENERIC BASE STATION TRANSCIVER ROHS, DIE CAST HOUSING</p>										

REV	DATE	DESCRIPTION	QTY	UNIT PRICE	TOTAL PRICE	AMOUNT	DATE
01	11/17/22	80-00219-02	1	100.00	100.00	100.00	11/17/22



ITEM	QTY	PART NO	DESCRIPTION	NOTES
1	1	SEE CHART	ASSEMBLY POA BASE STATION TRANSCIVER	
2	1	30-0005-00	CABLE ASSEMBLY FOR NITRILE TO MCX 90.27 O.A.L.	
3	1	30-0006-00	CASTER ROLLER BASE STATION TRANSCIVER	
4	1	30-0007-00	WASHER, RETENTION FOR BASE STATION TRANSCIVER	
5	1	30-0008-00	WASHER, RETENTION FOR EXTERNAL TIGHT	
6	1	30-0009-00	WASHER, RETENTION FOR EXTERNAL TIGHT	
7	1	30-0010-00	WASHER, RETENTION FOR EXTERNAL TIGHT	
8	1	30-0011-00	WASHER, RETENTION FOR EXTERNAL TIGHT	
9	1	30-0012-00	WASHER, RETENTION FOR EXTERNAL TIGHT	
10	1	30-0013-00	WASHER, RETENTION FOR EXTERNAL TIGHT	
11	1	30-0014-00	WASHER, RETENTION FOR EXTERNAL TIGHT	
12	1	30-0015-00	WASHER, RETENTION FOR EXTERNAL TIGHT	
13	1	30-0016-00	WASHER, RETENTION FOR EXTERNAL TIGHT	
14	1	30-0017-00	WASHER, RETENTION FOR EXTERNAL TIGHT	
15	1	30-0018-00	WASHER, RETENTION FOR EXTERNAL TIGHT	
16	1	30-0019-00	WASHER, RETENTION FOR EXTERNAL TIGHT	
17	1	30-0020-00	WASHER, RETENTION FOR EXTERNAL TIGHT	
18	1	30-0021-00	WASHER, RETENTION FOR EXTERNAL TIGHT	
19	2	30-0022-00	WASHER, RETENTION FOR EXTERNAL TIGHT	
20	1	30-0023-00	WASHER, RETENTION FOR EXTERNAL TIGHT	
21	1	30-0024-00	WASHER, RETENTION FOR EXTERNAL TIGHT	
22	1	30-0025-00	WASHER, RETENTION FOR EXTERNAL TIGHT	
23	1	30-0026-00	WASHER, RETENTION FOR EXTERNAL TIGHT	
24	1	30-0027-00	WASHER, RETENTION FOR EXTERNAL TIGHT	
25	1	30-0028-00	WASHER, RETENTION FOR EXTERNAL TIGHT	
26	1	30-0029-00	WASHER, RETENTION FOR EXTERNAL TIGHT	
27	1	30-0030-00	WASHER, RETENTION FOR EXTERNAL TIGHT	

NOTES: (UNLESS OTHERWISE SPECIFIED)

- FOR TORQUE VALUES OF FASTENERS REFER TO CHART
- PLACE THIS 5 ON TOP OF SCREEN AFTER ASSEMBLY SO THAT SCREEN HEAD IS COVERED AS SHOWN
- INSTALL ITEM 3 INTO BASE CAVITY AS PER IN LOGGE INSTRUCTION FOR INSTALLING ADHESIVE BENTS
- INSTALL ITEM 21 AND PRESS IN ITEM 5 UNTIL ITEM 5 HAS BOTTOMED OUT OF ITEM 21. CARE MUST BE GIVEN NOT TO DAMAGE ITEM 21 DURING INSTALLATION OF ITEM 5 IN 21
- ITEM 7 IS FOR REFERENCE ONLY. USE ITEM 11-0006-00 FOR DETAILS ON THIS ITEM
- THE SHIELD COVER MUST BE REMOVED TO ASSEMBLE POA SCREWS AND TO PING CABLE RING CONNECTOR ON POA
- INSERT LOCKWASHER, ITEM 27 AND TIGHTEN FASTENERS TO A TORQUE VALUE OF 25 IN-LBS. AFTER THIS TORQUE, SEE THAT FLATS ARE ALIGNED VERTICALLY. IF NOT, TURN THE FASTENERS UP TO 20 IN-LBS UNTIL THE FLATS ARE VERTICAL. HOLD THE HEADS OF ITEM 27 AS SHOWN IN DETAIL A. ONE MUST BE GIVEN NOT TO SCREW IN ITEM 27 UNTIL THE FASTENERS HAVE BEEN TIGHTENED TO THE TORQUE.
- APPLY A THIN FILM OF ITEM 25 ON THE BOTTOM FOR POWER AMPIFIER USING AN OXIDIZER OR AN AF THOUGHT COVERING THE CASES
- UPON COMPLETION OF ASSEMBLY AND TESTING, ASSEMBLY MUST BE PLACED ONE (1) OF ITEM 22 ON THE FRONT AND ONE (1) OF ITEM 22 ON THE REAR OF THE HOUSING
- ALL WASHERS (ITEMS) MUST BE TIGHTENED TO THE TORQUE VALUES SHOWN IN THIS CHART
- APPLY ONE (1) OF TWO (2) SCREWS OF ITEM 23 IN AREAS OF ITEM 23 FROM THE HOUSING
- FOR SIZE OF FRAME, THE BENDING CONTOUR OF ITEM 23 MUST BE REFERRED TO THE BENDING INSTRUCTION DRAWING TAB B. LOCATIONS TO BEND MUST BE REFERRED TO THE BENDING INSTRUCTION DRAWING
- ADHERE ITEM 14 TO TOP OF SHIELD COVER. THE SHIELD COVER EDGES AS GUIDES FOR ALIGNMENT. NOTE THE OUTDOOR ORIENTATION TO GO OVER THE BENT PART.

Redline
 DRAWING ASSY, GENERIC
 BASE STATION TRANSCIVER
 ROHS, DIE CAST HOUSING
 80-00219-02
 01