

L-1 Identity Solutions
4G Extreme Cooler Board
P/N: 811-00
Rev1

DR127-4R7
25C008 G

Steward
Z171R-10
PAT. NO. 5,455,552

330
35A
9N8

E9XE
100
63V

E9XE
100
63V

E9TE
50V
2N2

1000µF
16V

Warning:
Service only by a qualified person.
Fuse replacement
must be identical to factory part
Itrip=10A, Max Volt =125V

M3
0938
FD2

MSP430 debug port
FD1

1256

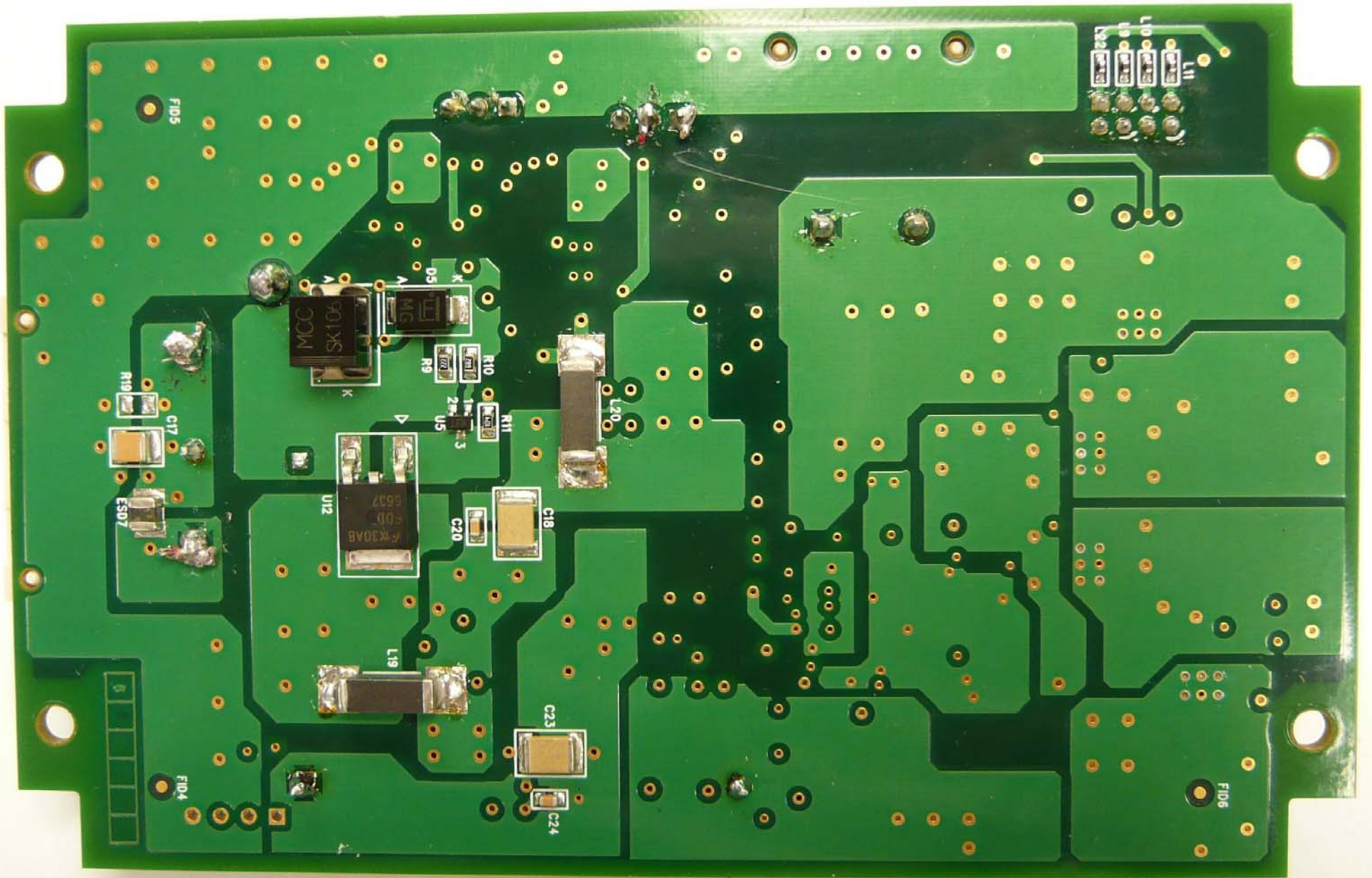
F1

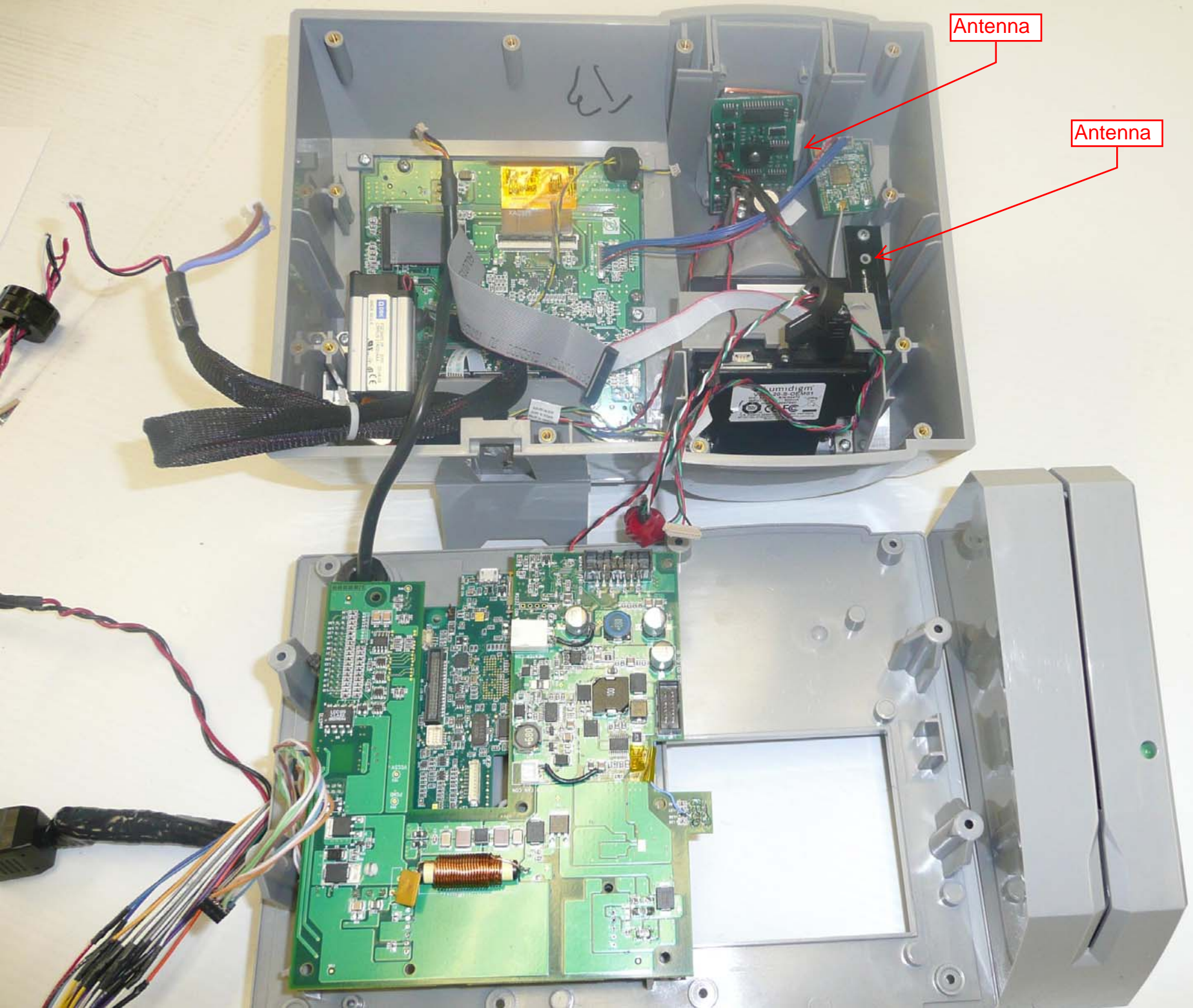
Ext Input Supply Con 3

Ext Fan Supply Con

Cooler to IO Con.

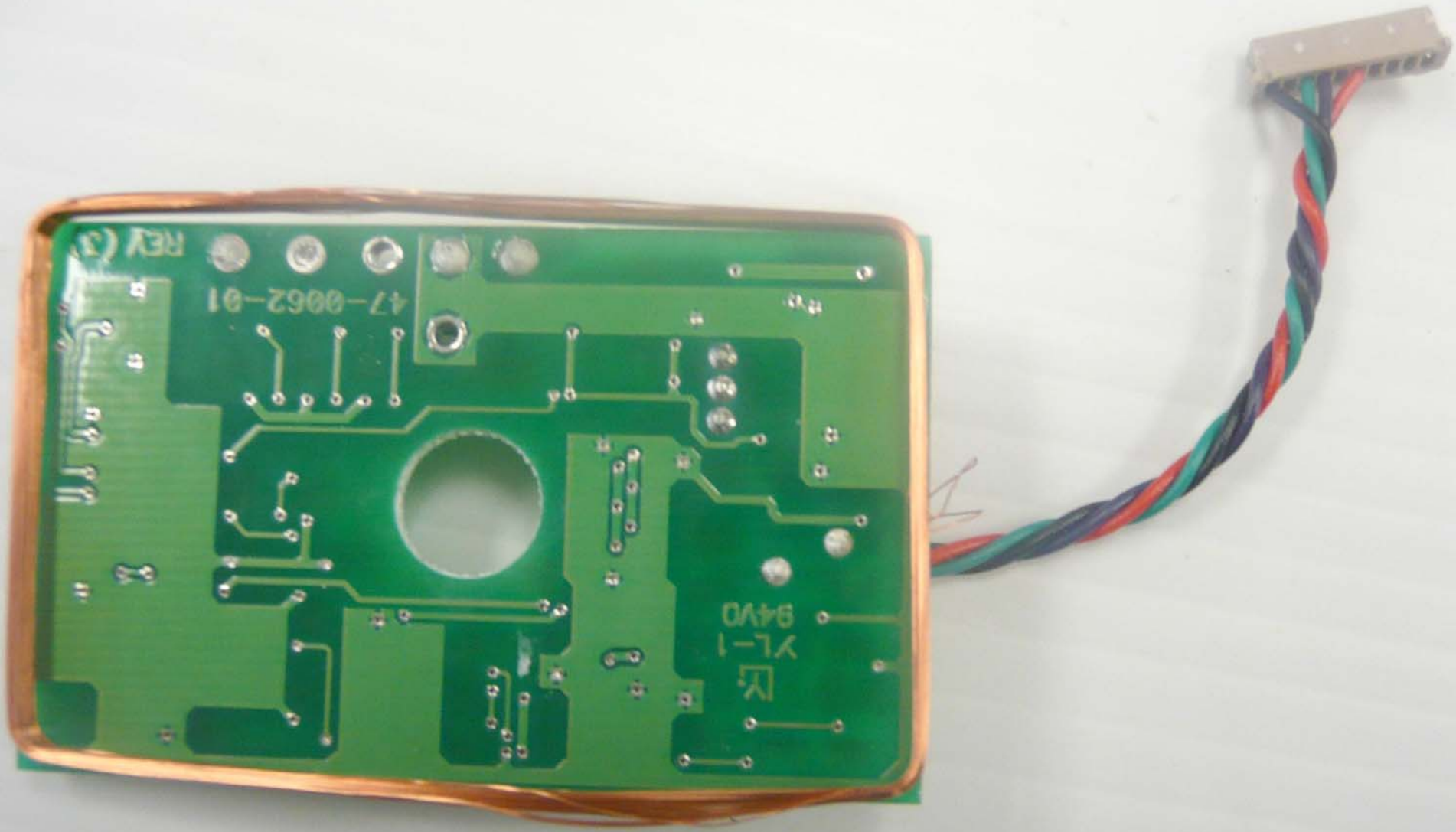






Antenna

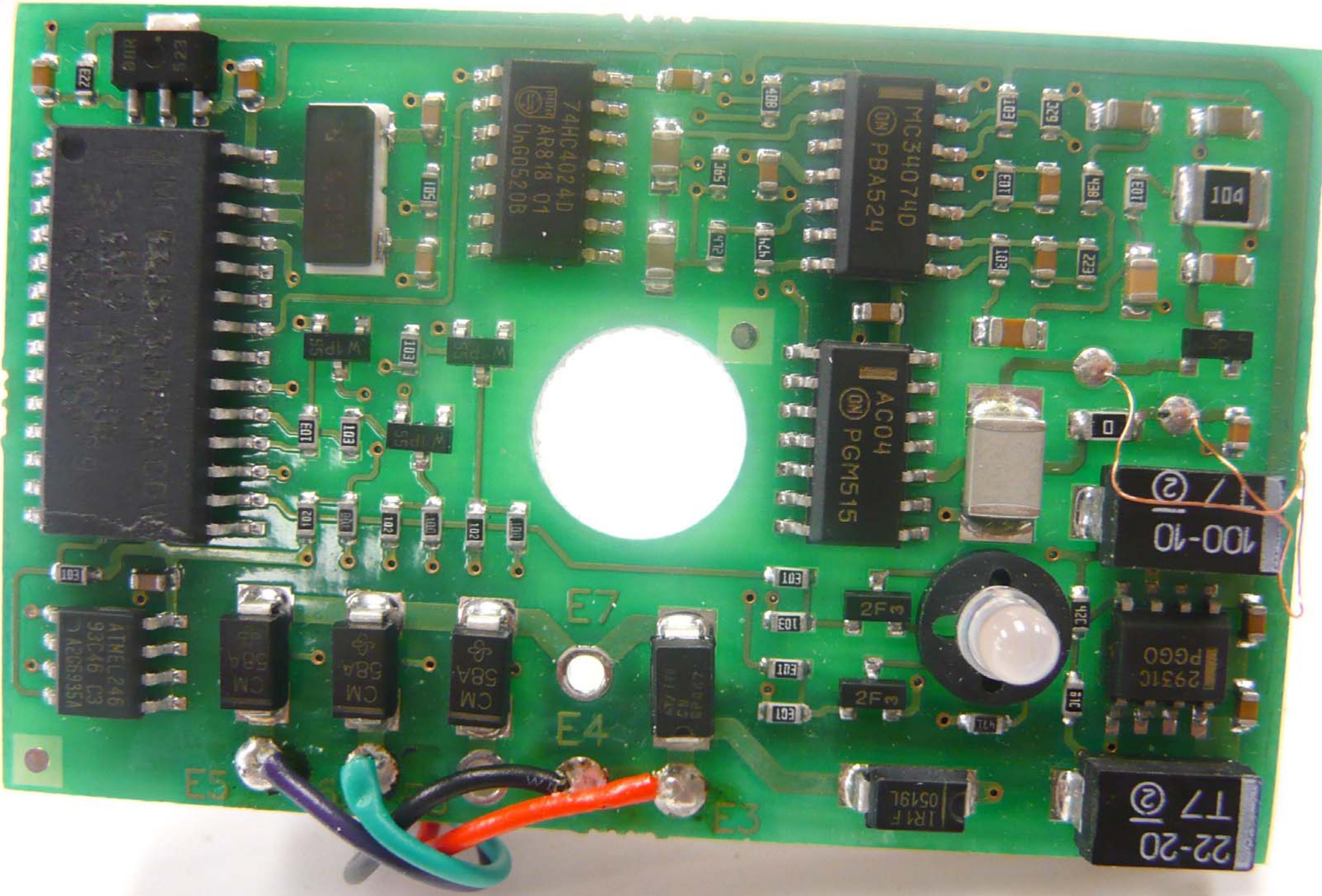
Antenna



REV 2

47-0062-01

YL-1
94V0



74HC4024D
AR818 01
Un60520B

MC34074D
PBA524

AC04
PGM515

ATME1246
93C46 C3
A208935A

100-10
②

2931C
PG60

22-20
T7
②

E5

E7

E4

E3

WIP55

WIP55

CM 58A

CM 58A

CM 58A

20VDC
M125

2F

2F

1R1F
0519L

104

②

②

E21

E29

E38

E01

E23

E01

E01

E01

E01

E01

E01

E01

E03

E23

E01

E01

E01

E01

E01

E01

E01

E01

E01

E01

E01

E01

E01

E01

E01

E01

E01

E03

E01

E01

E01

E01

E01

E01

E01

E01

E01

E01

E01

E01

E01

E01

E01

E01

E01

E01

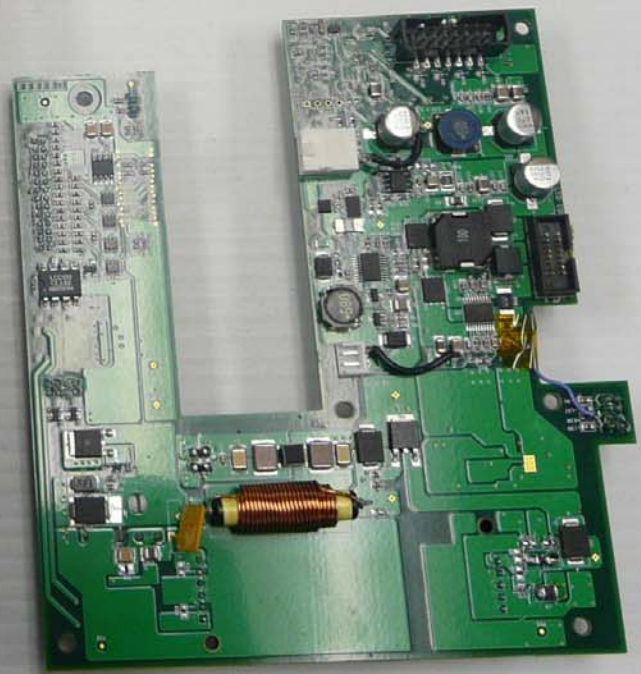
E01

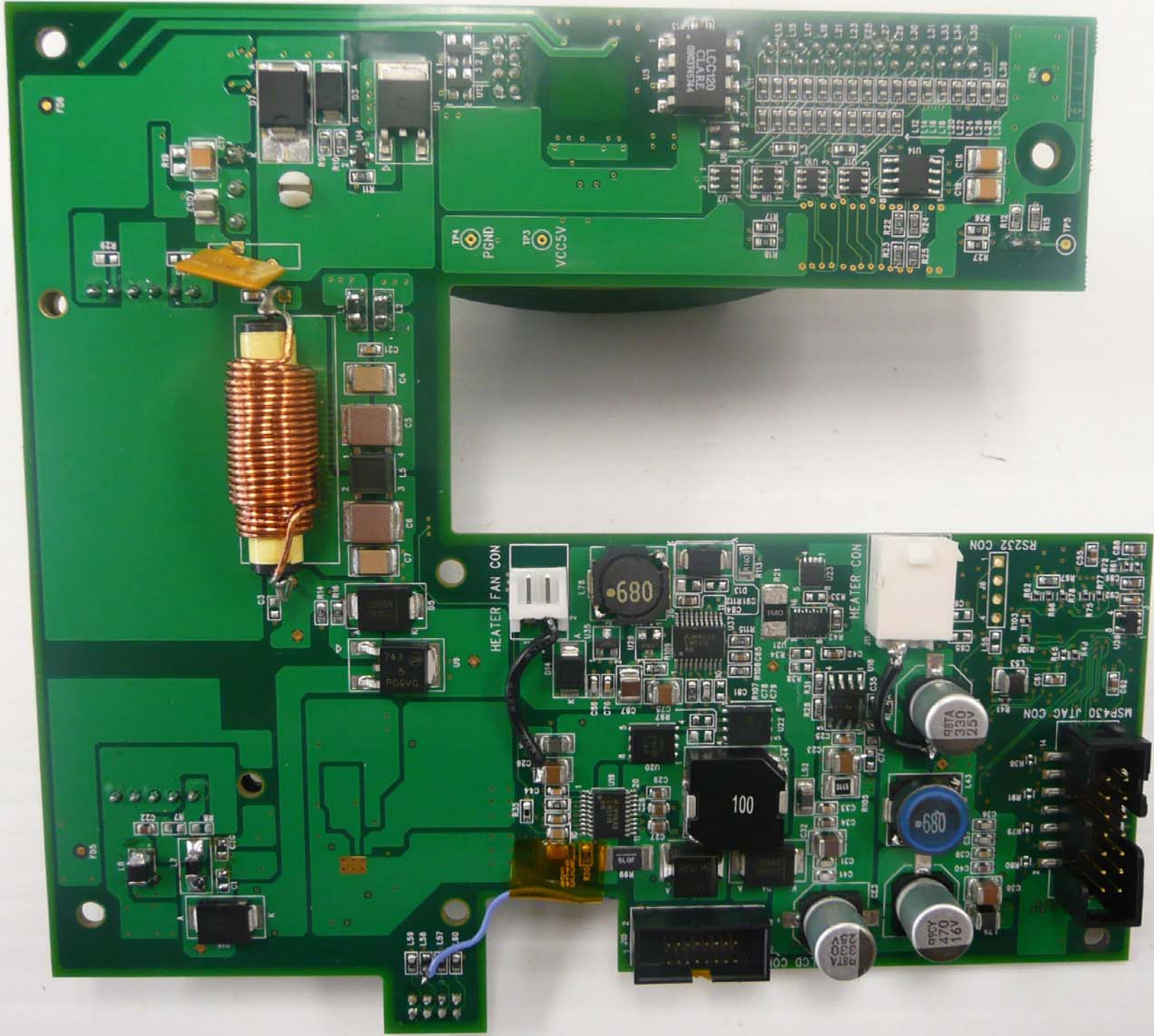
E01

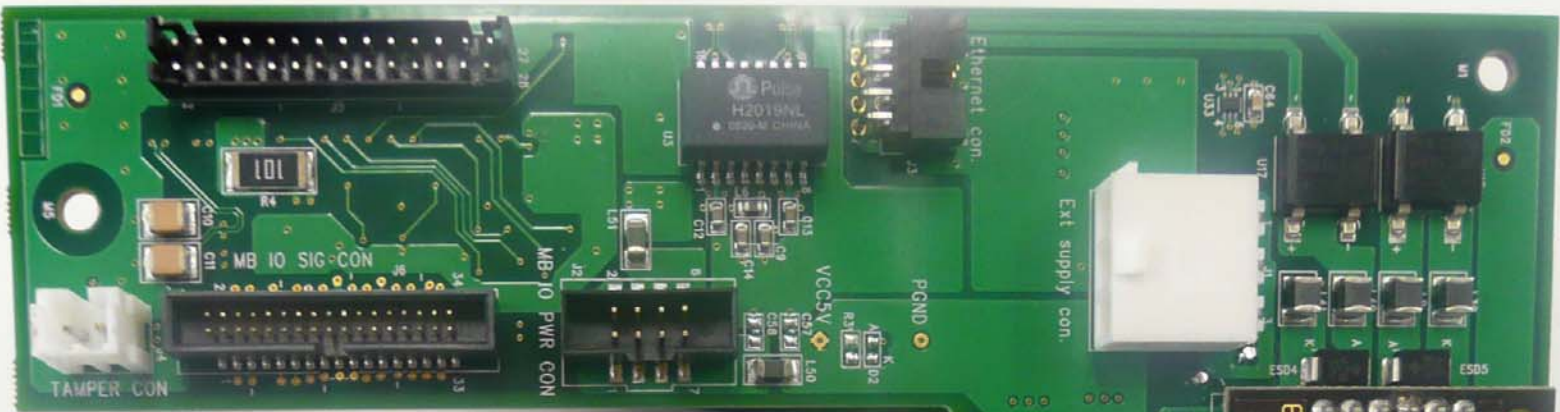
E01

E01

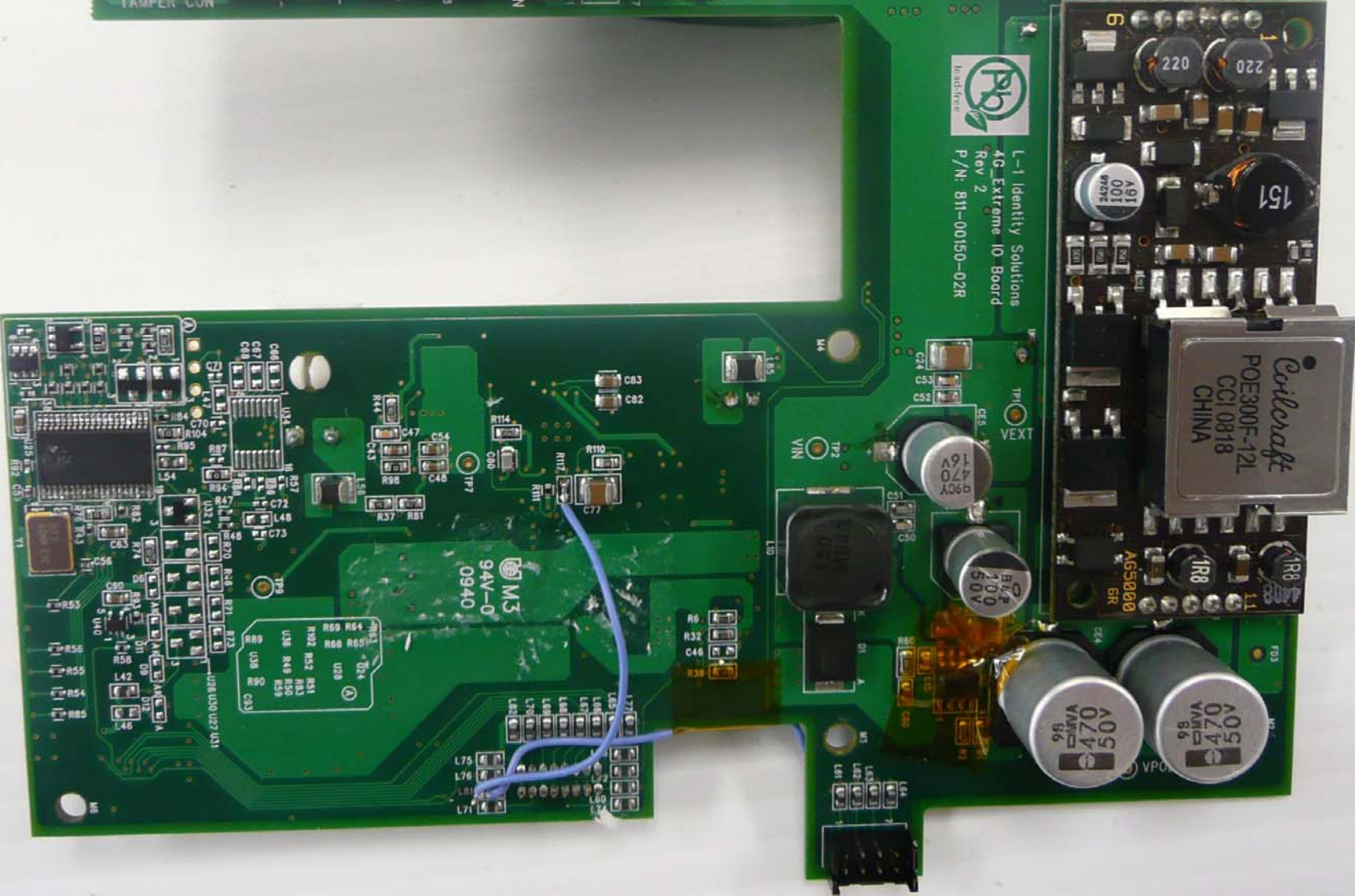




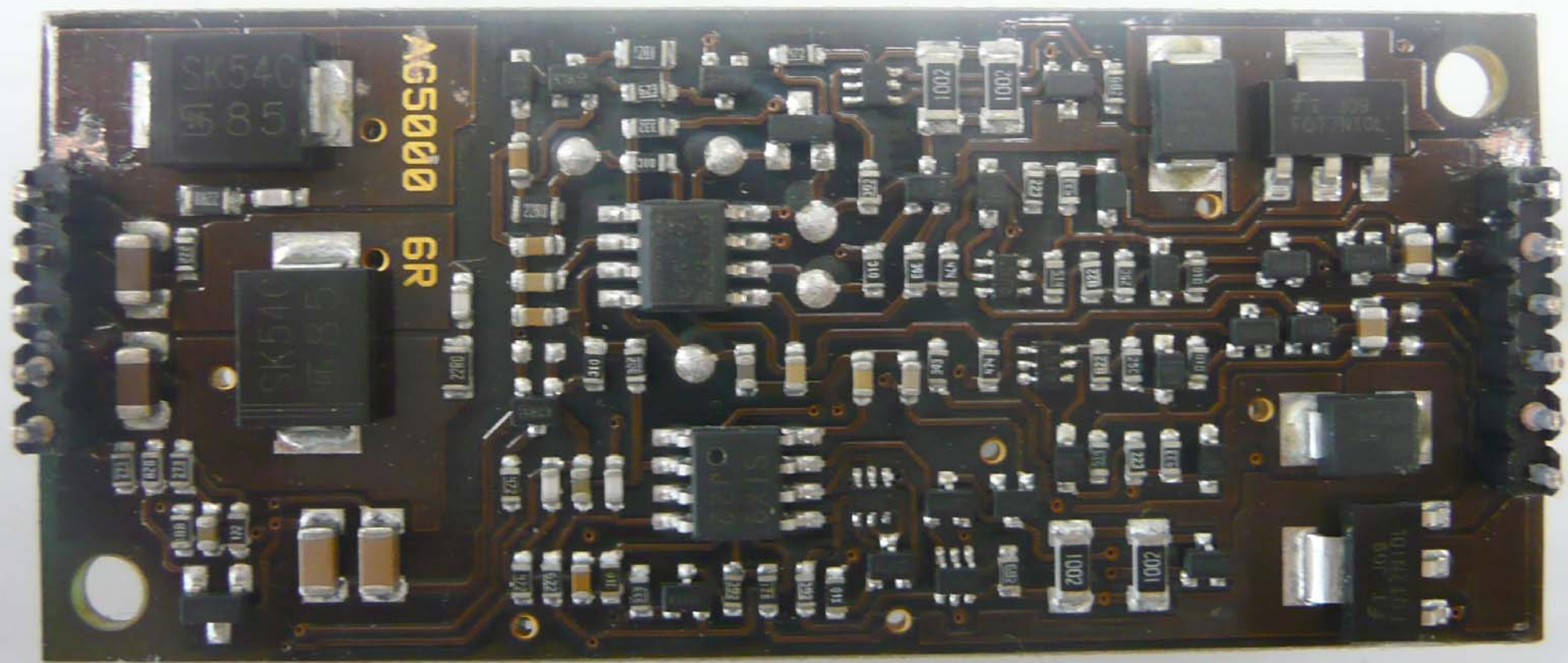




L-1 Identity Solutions
AG_Extreme IO Board
Rev 2
P/N: 81-00150-02R







SK540
85

AG5000

SK540
85

6R

71 009
FOT7W10L

71 009
FOT7W10L

1002

1002

2001

1002

2200

10

102

10

10

10

10

10

10

10

10

10

10

10

10

10

10

10

10

10

10

10

10

10

10

10

10

10

10

10

10

10

10

10

10

10

10

10

10

10

10

10

10

10

10

10

10

10

10

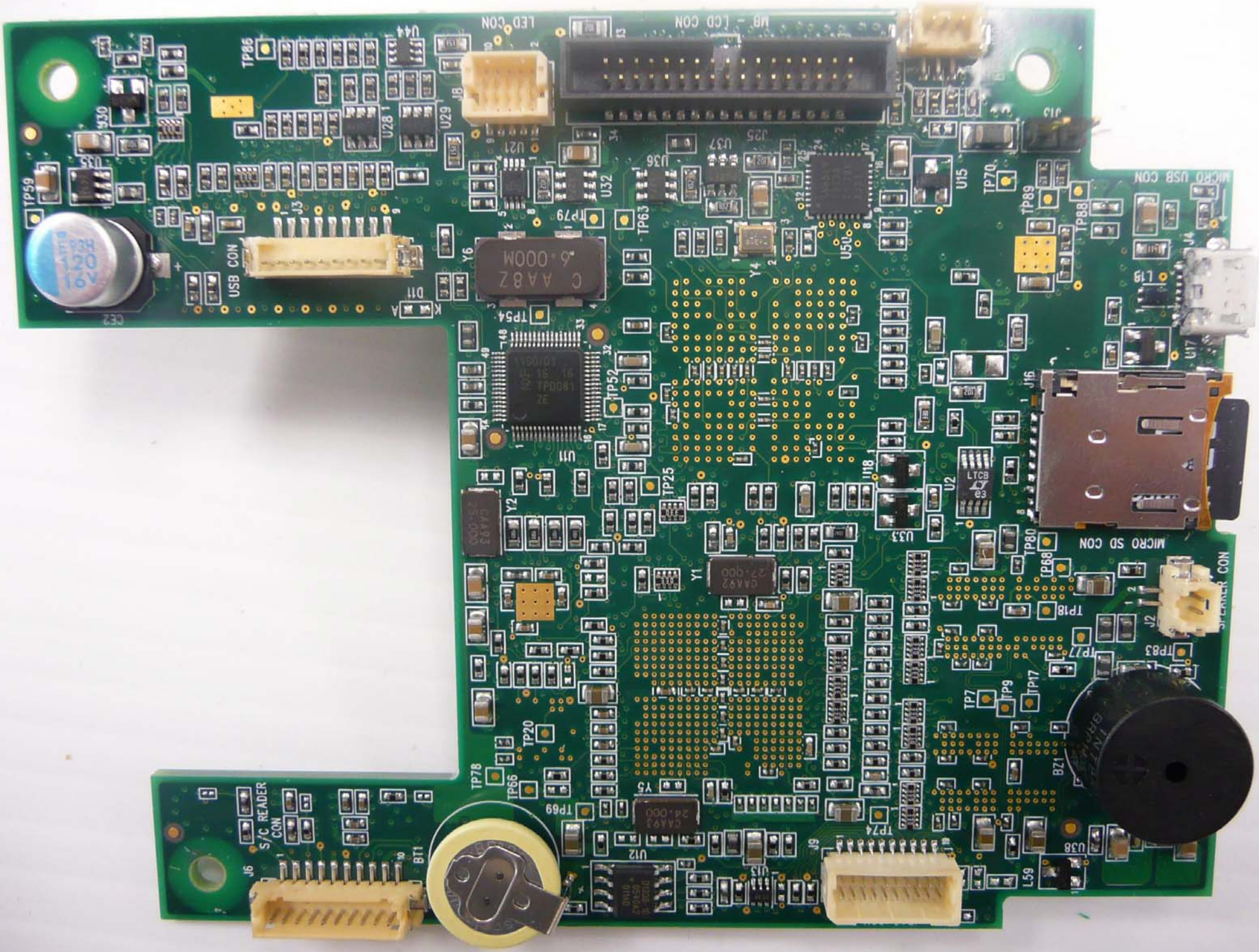
10

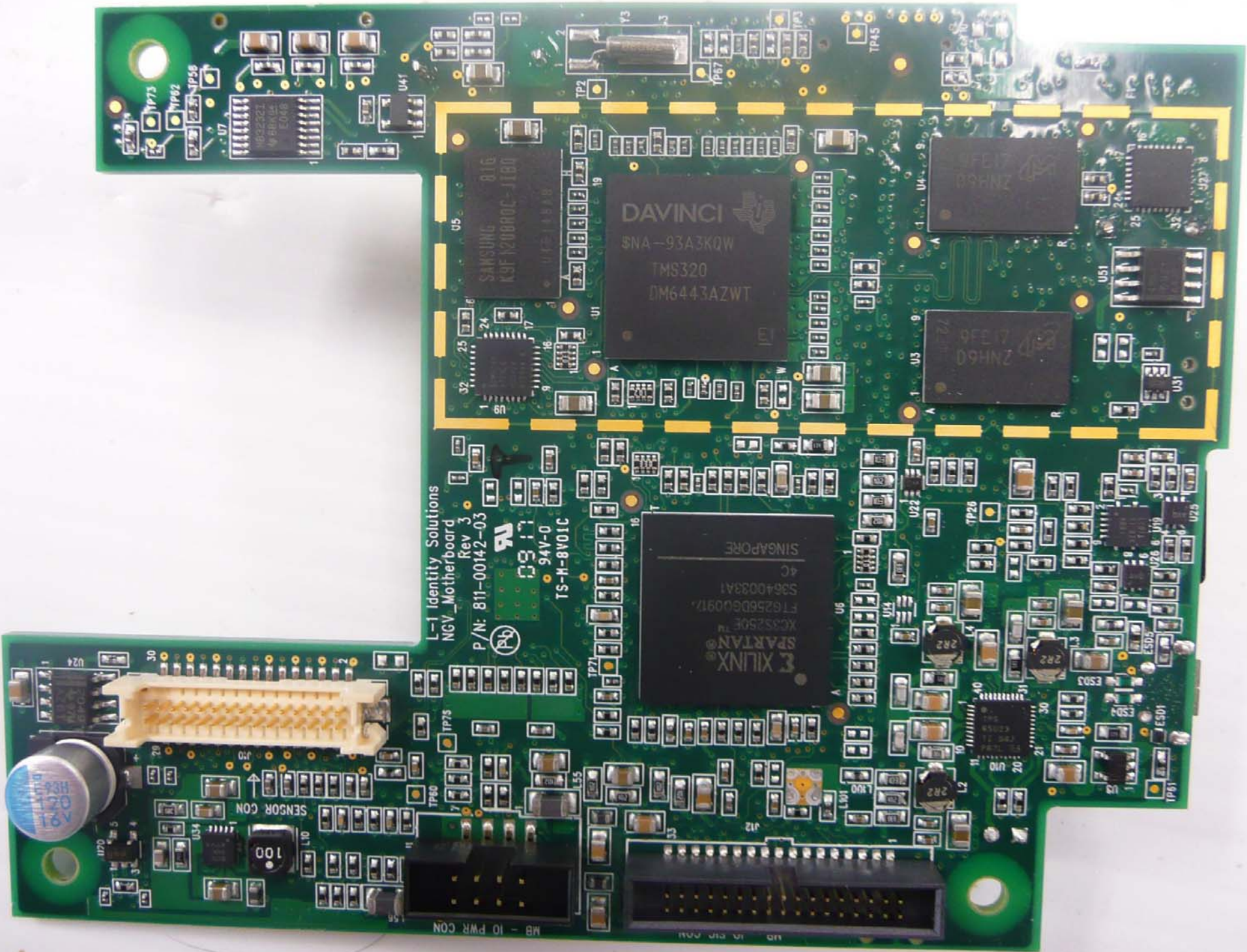
10

10

10

10





L-1 Identity Solutions
NGV_Motherboard
Rev 3
P/N: 811-00142-03

TS-M-8V01C
94V-0



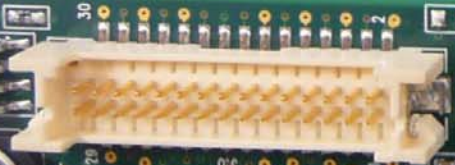
DAVINCI
SNA-93A3KQW
TMS320
DM6443AZWT

SAMSUNG
K9F120800C-1T80

XILINX
SPARTAN
XC3S250E
FT6256D600917
S9640033A1
4C
SINGAPORE

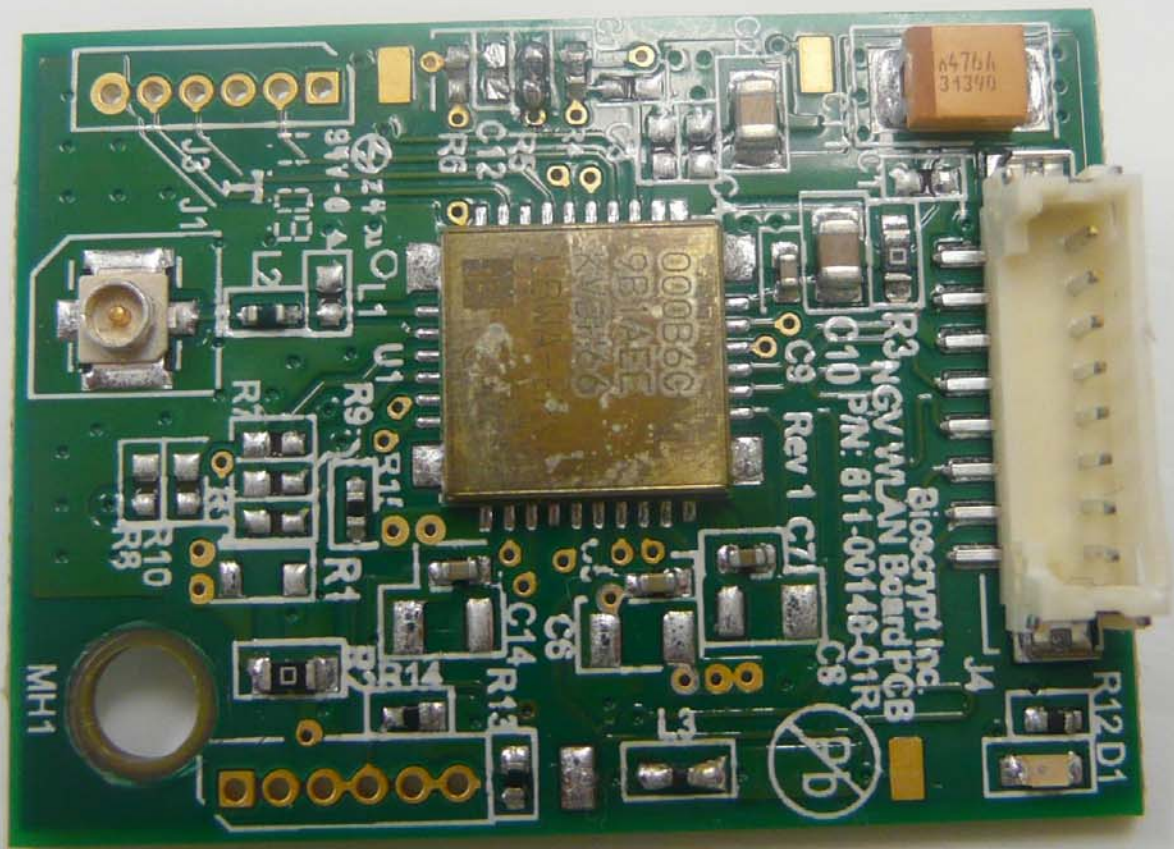
9FE17
D9HNZ

9FE17
D9HNZ



MB - 10 PWR CON

MB - 10 PWR CON



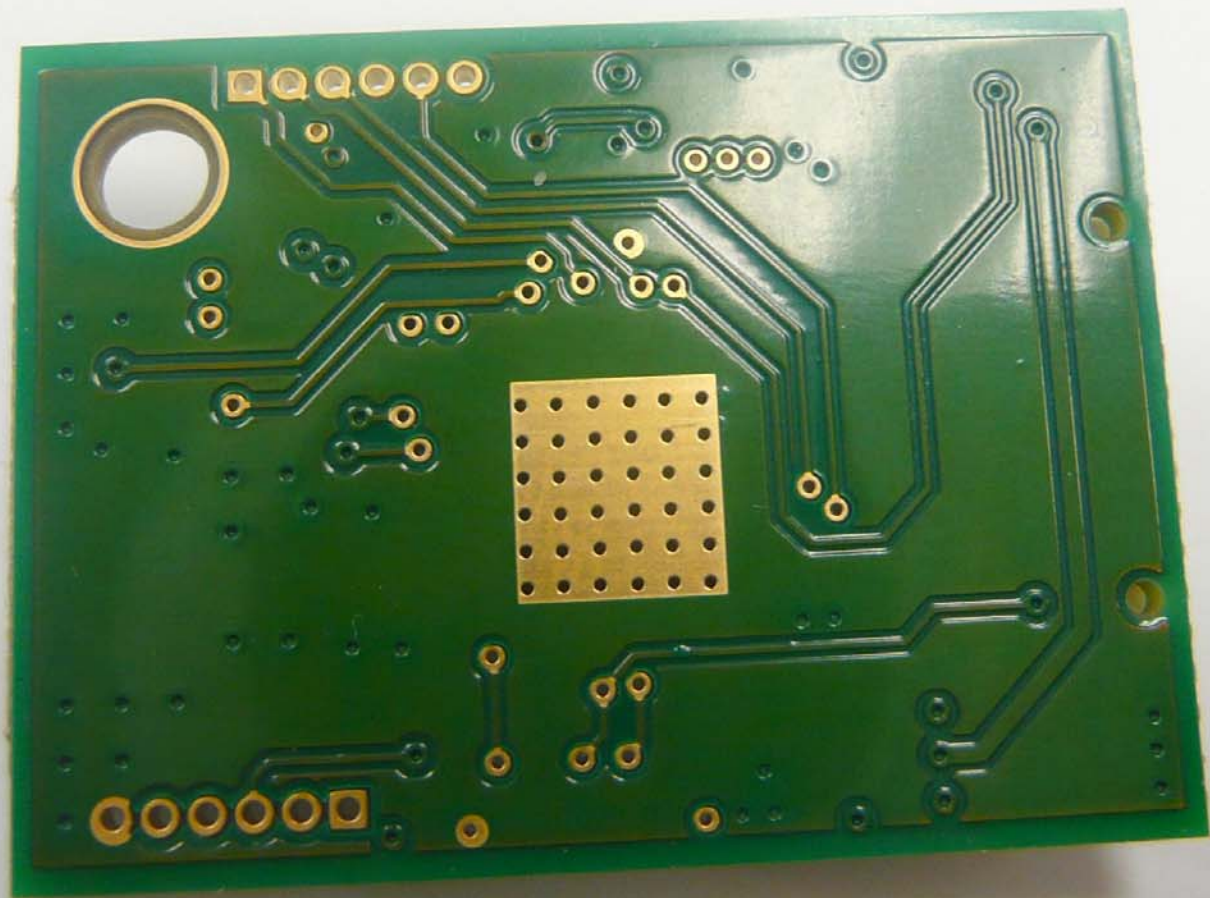
Biocrypt Inc.
R3 NGV W/LAN Board PCB
C10 P/N: 811-00148-01R
Rev 1

000B6C
9B1AEL
XVEN65

6476h
31390



MH1





Laird
TECHNOLOGIES®

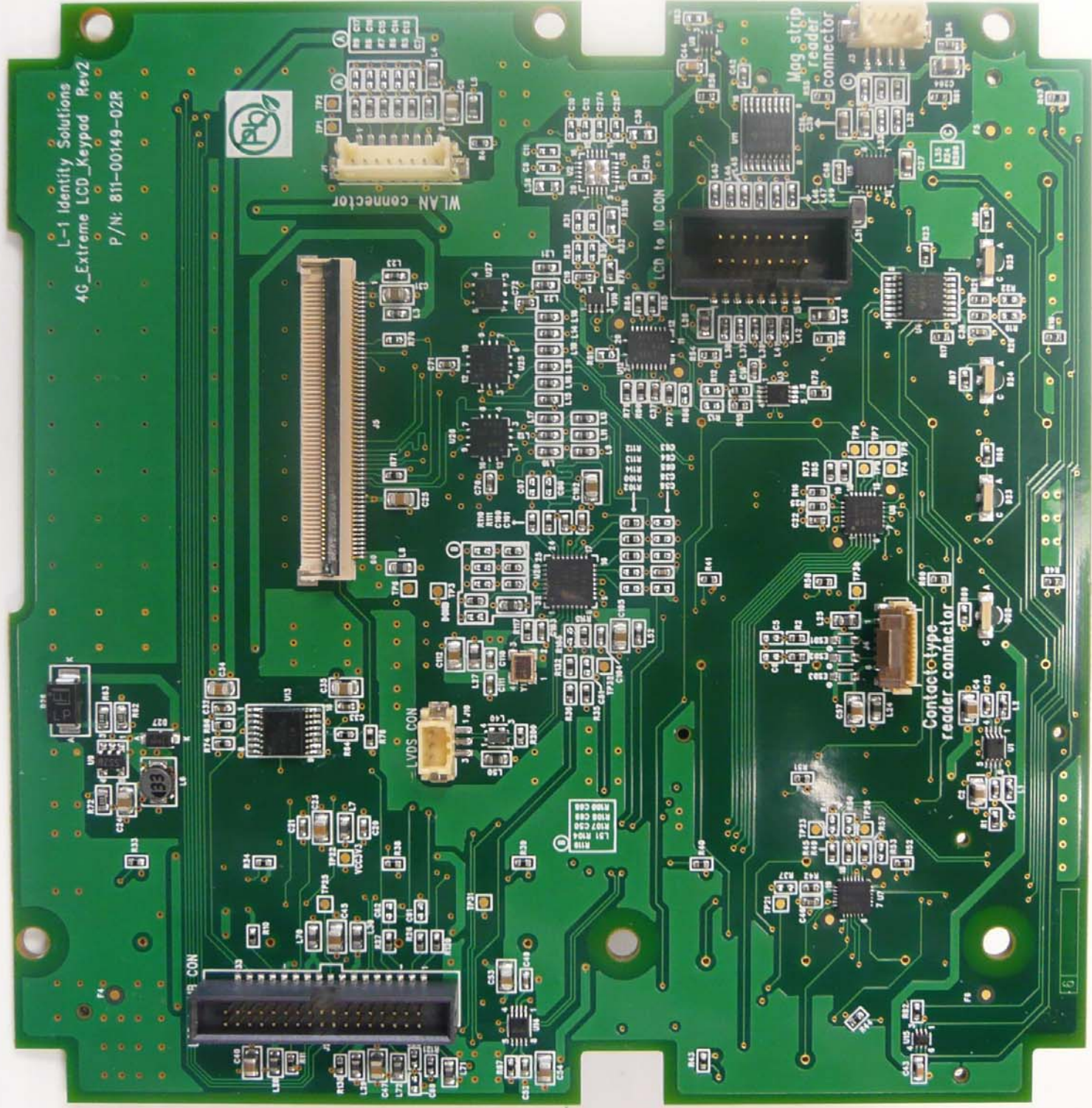
MULTIBAND

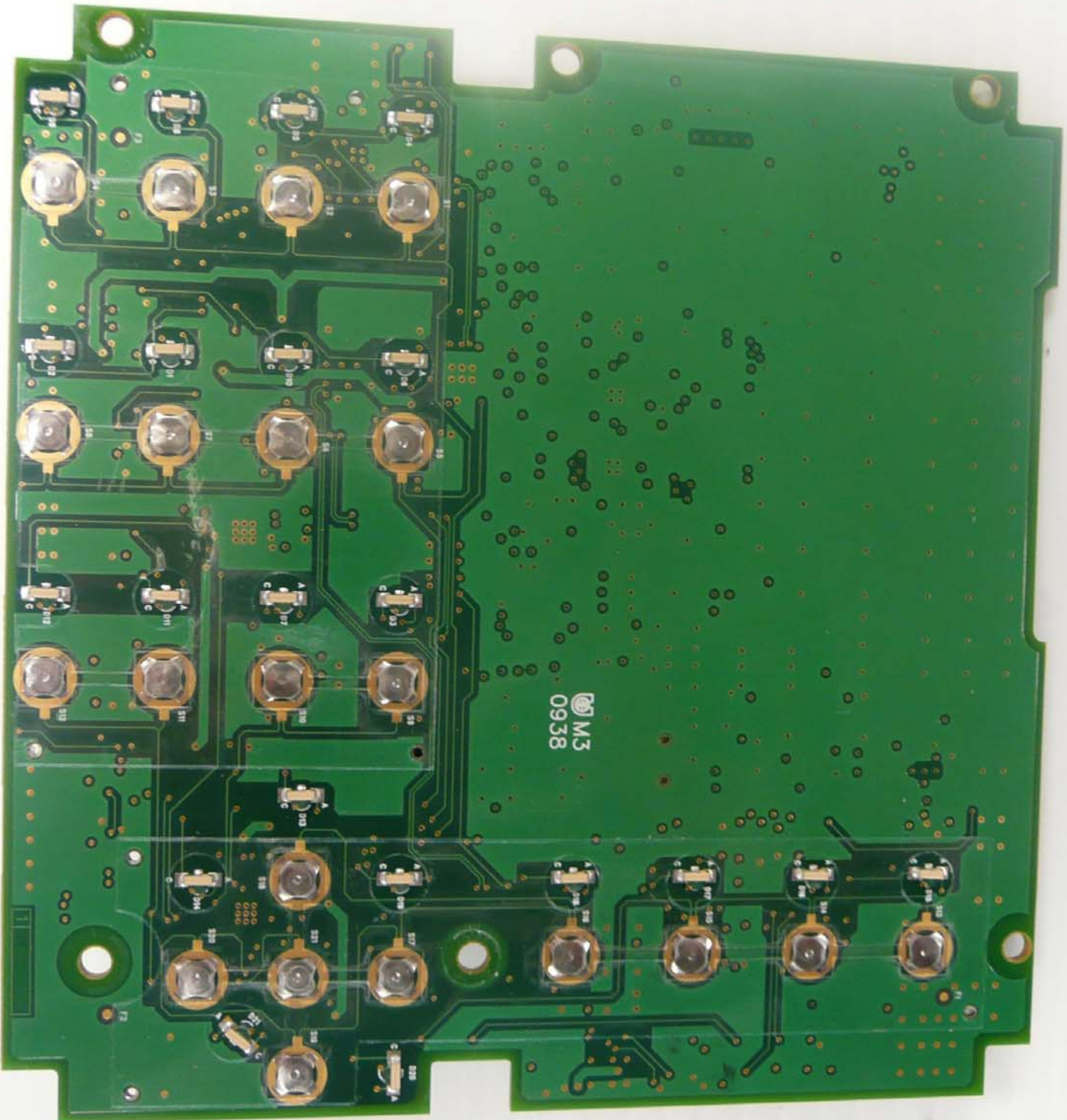
PROTECTED BY US PATENT : 6,943,734

MAP24057



L-1 Identity Solutions
4G_Extreme_LCD_Keypad Rev2
P/N: 811-00149-02R

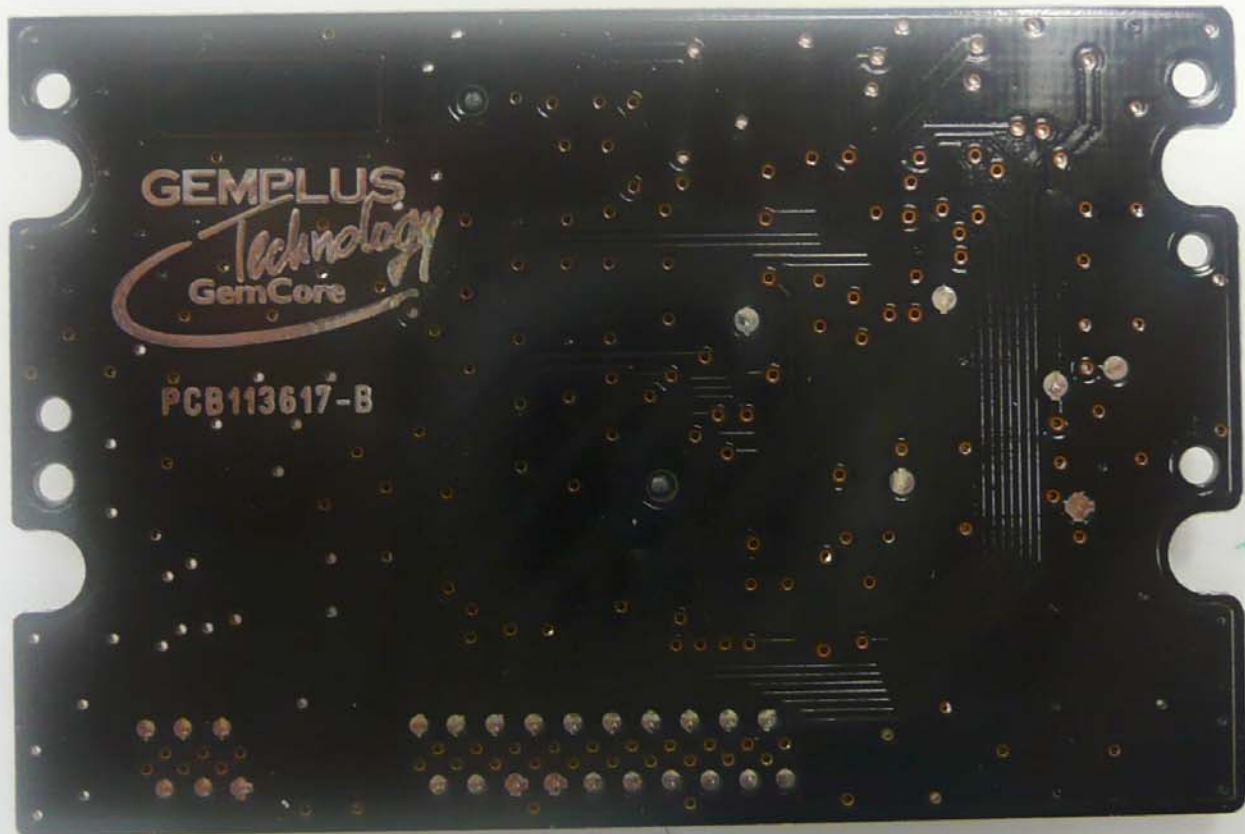




M3
0938

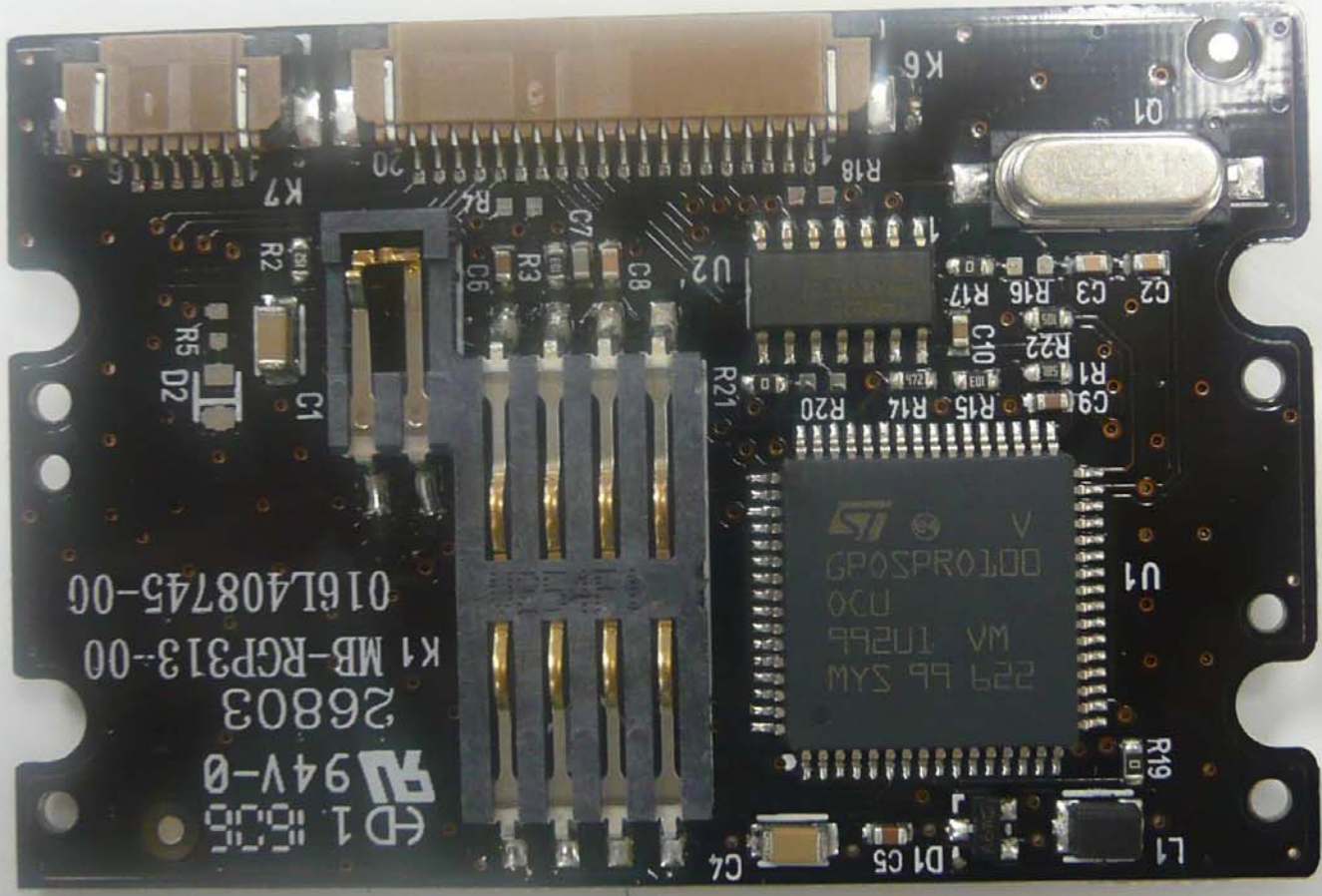
0000
0000
0000

0000
0000
0000



GEMPLUS
Technology
GemCore

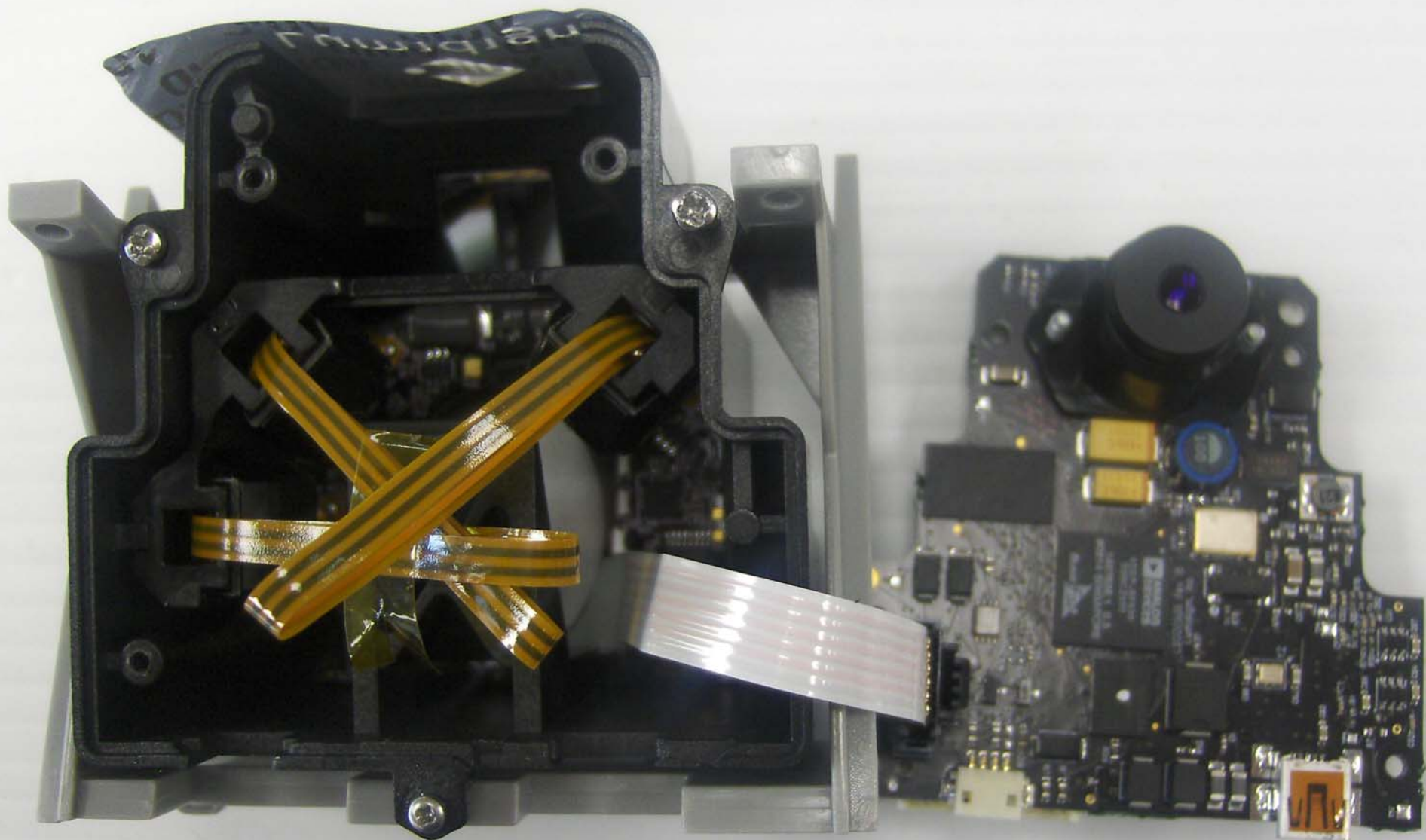
PCB113617-B

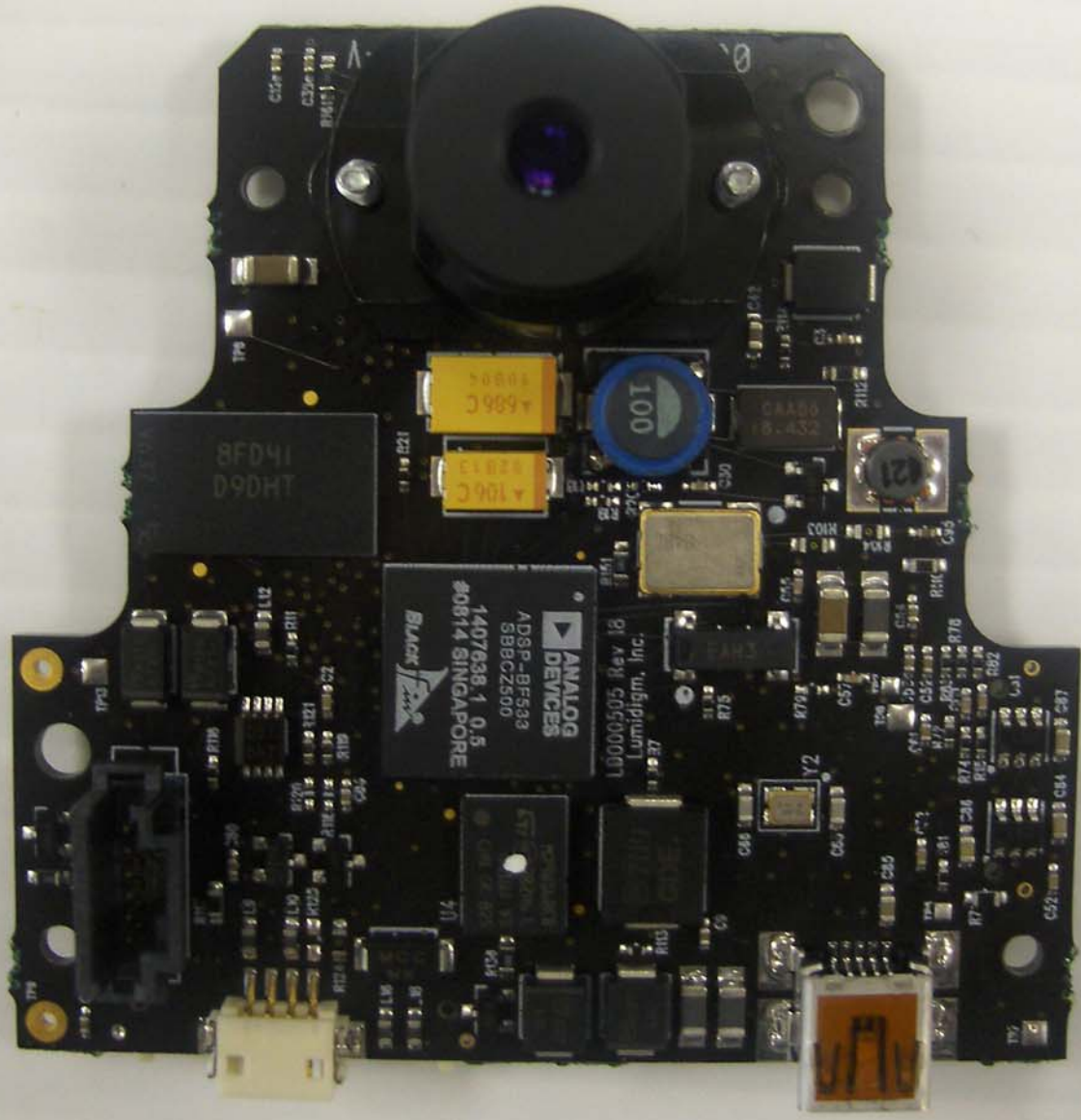


ED 1 806
94V-0
26803
K1 MB-RGP313-00
016L408745-00

229 BP SYM
MV 1U2PB
U30
00T0P0S0P0
LSI

U1
R19
L1
D1 C5
C4
R21
C9
R1
R22
C10
R15
R14
R20
R16
R17
C3
C2
R18
K6
K7
R2
R5
D2
C1
R3
C6
C7
C8
U2





8FD41
D9DHT

A 100C
A 100C

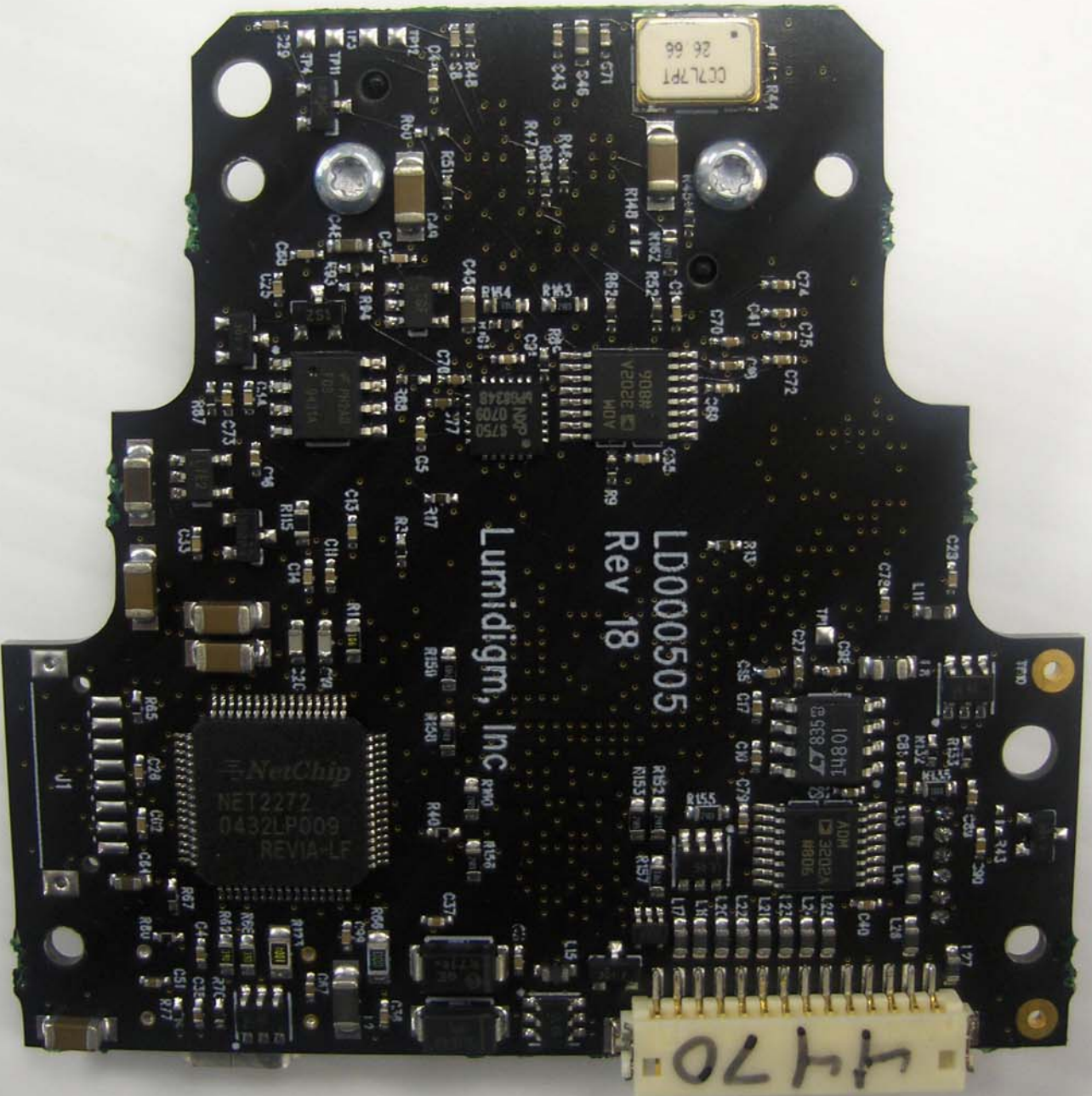
100

ANALOG DEVICES
ADSP-BF583
1407638-1 0.5
#0814 SINGAPORE

L0000505 Rev 18
Lumidigm, Inc.

USB connector

White multi-pin connector



CC2L7P1
26 86

LD000505
Rev 18

Lumidigm, Inc

NetChip
NET2272
0432LP009
REVIA-LF

108H1
ADM
3892A
8905

4470

