

L-1 Identity Solutions  
4G Extreme Cooler Board  
P/N: 811-00  
Rev1

DR127-4R7  
250008 G

Steward  
Z171R-10  
PAT. NO. 5,455,552

Warning:  
Service only by a qualified person.  
Fuse replacement  
must be identical to factory part  
Itrip=10A, Max Volt =125V



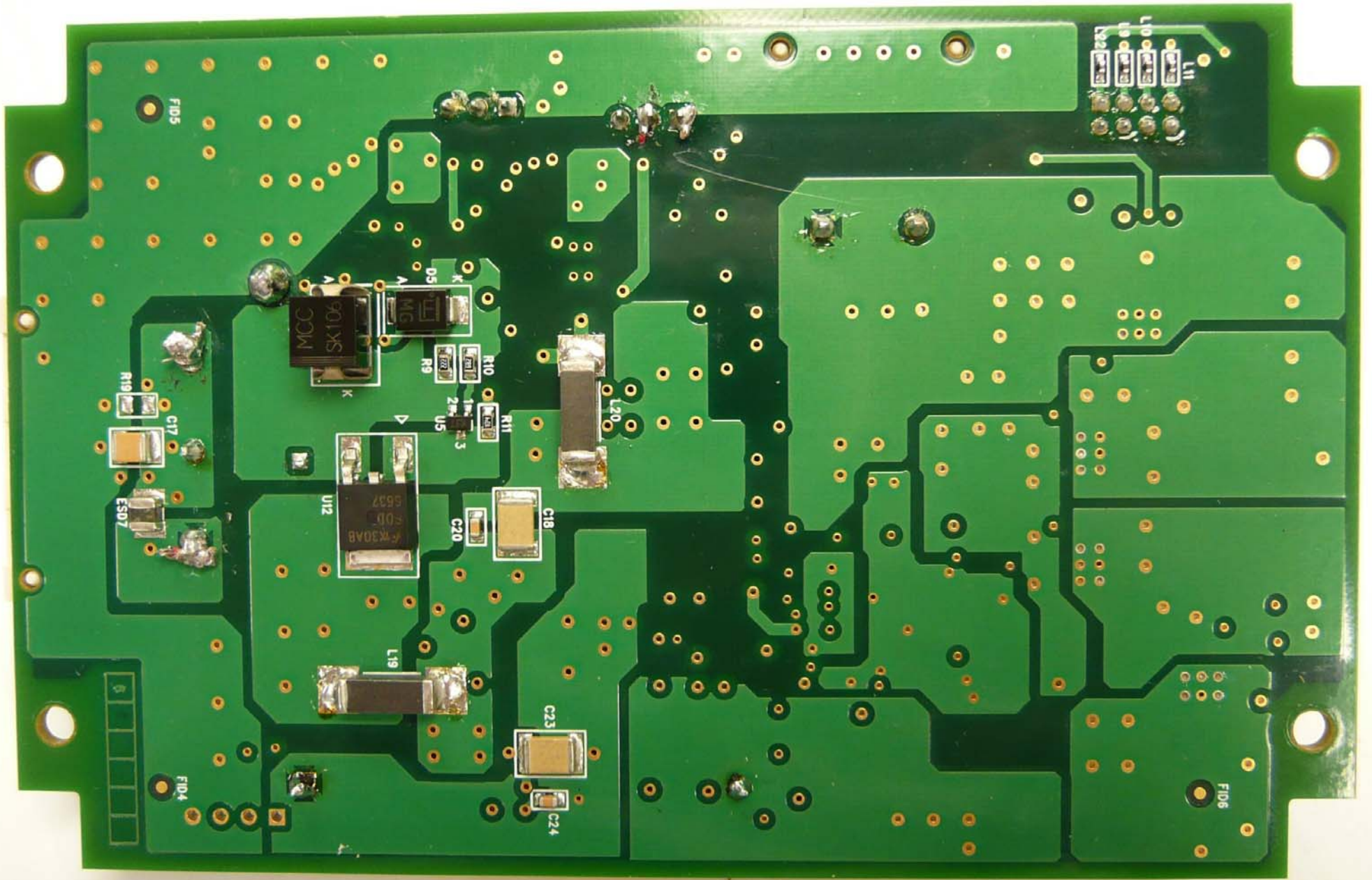
M3  
0938  
FD2

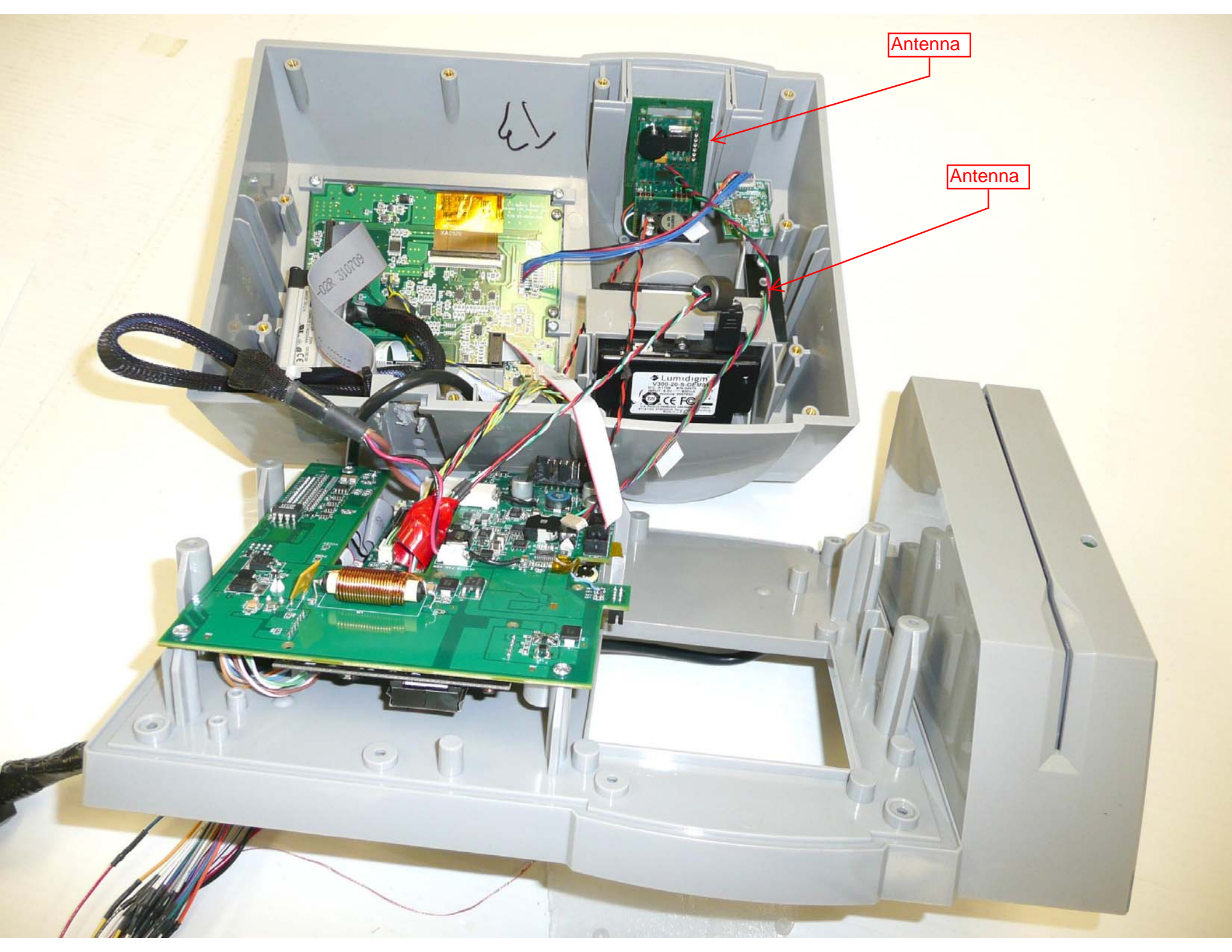
MSP430 debug port  
FD1

Cooler to IO Con.

Ext Input Supply Con

Ext Fan Supply Con



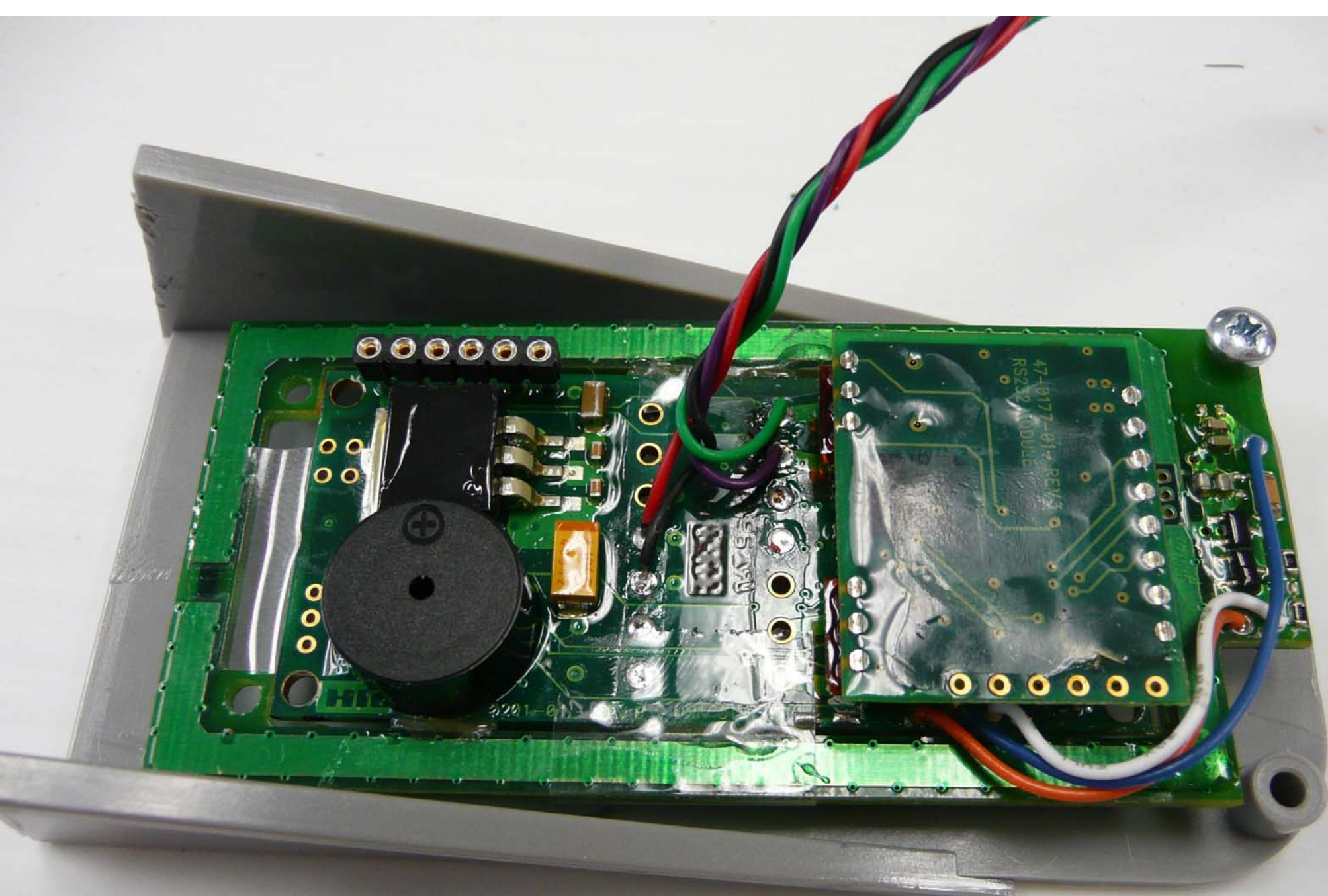


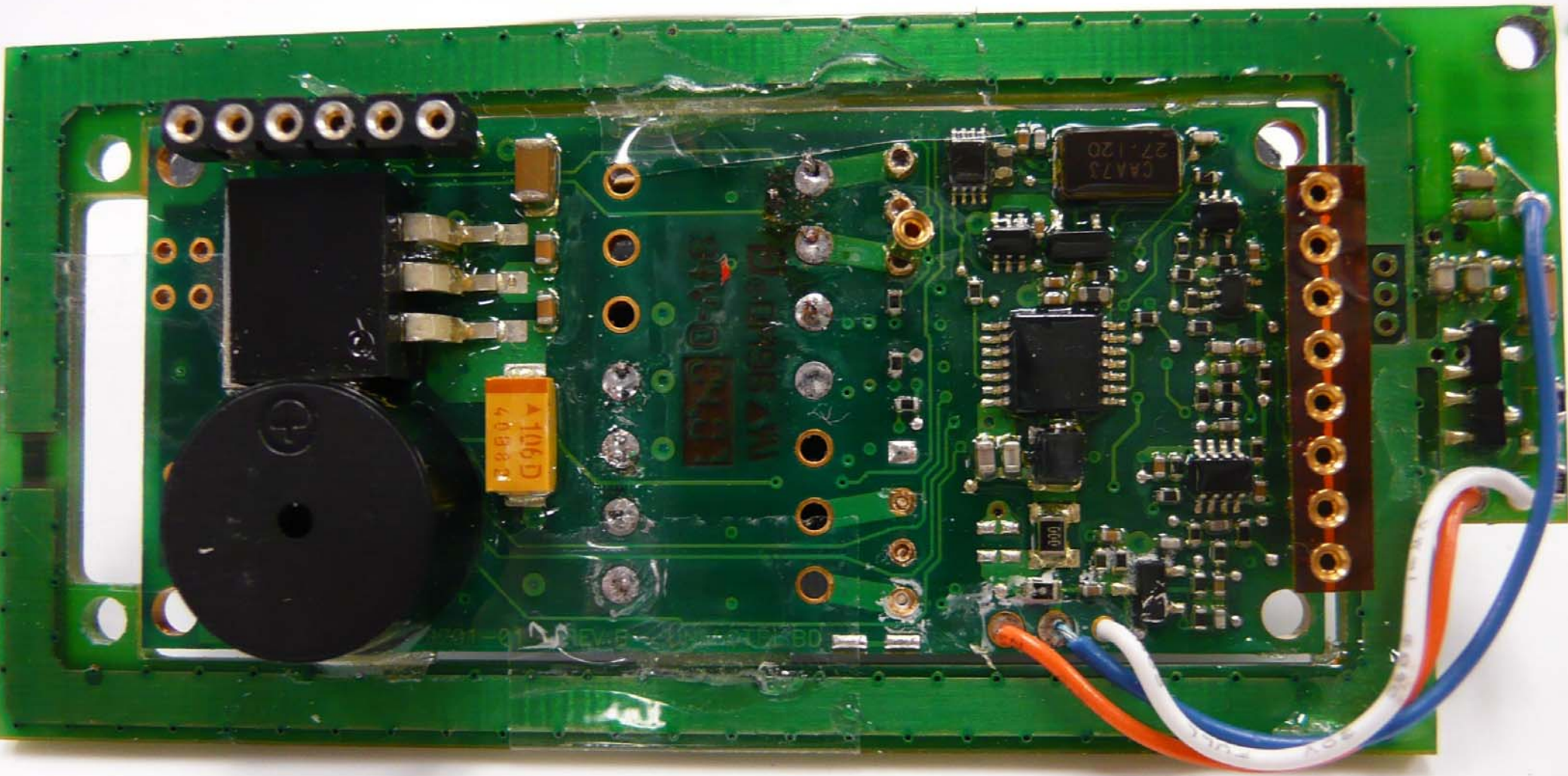
Antenna

Antenna

DER 310709

Lumidigm  
V300-20-0-01  
CE FC





6-pin header connector

Black integrated circuit

Large black circular component

A106D  
4088-2

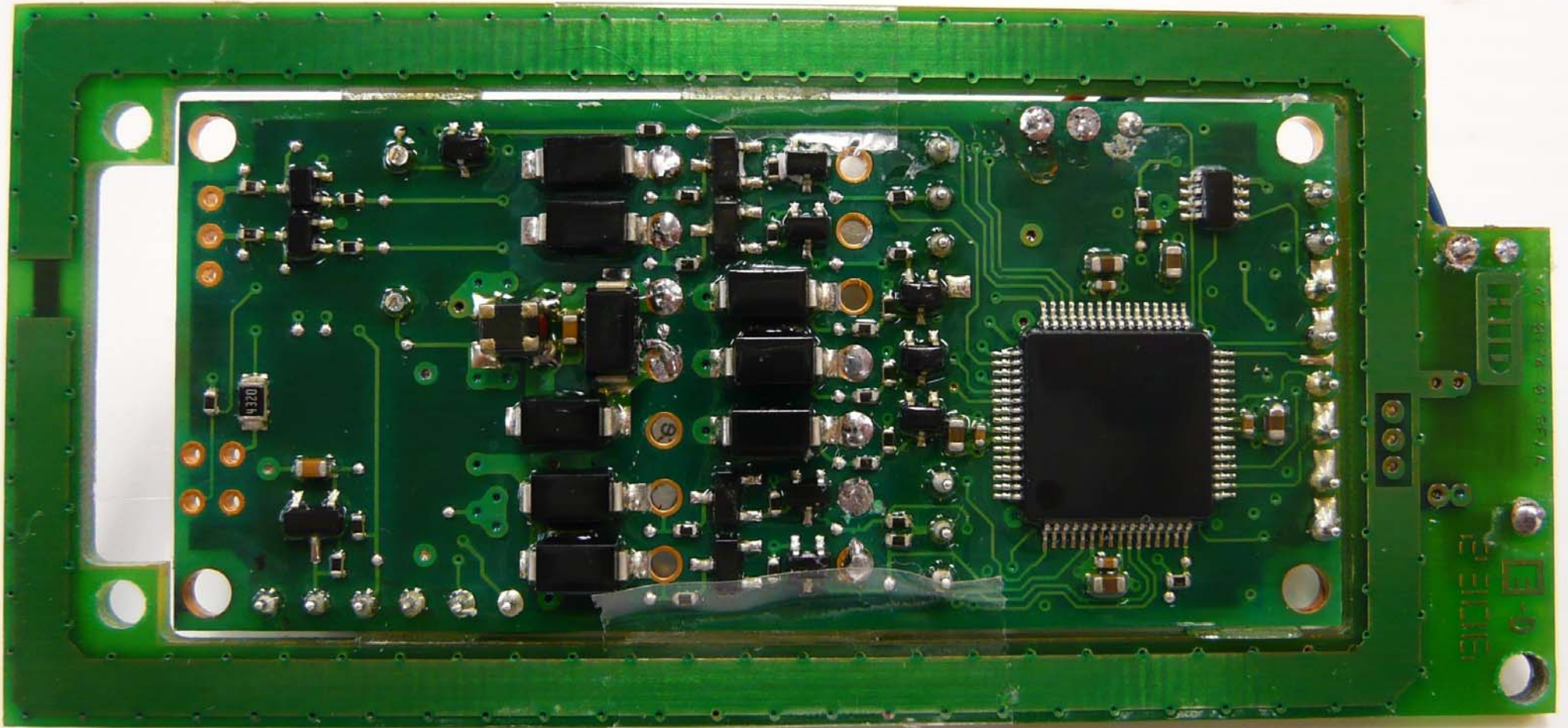
CA73  
27-120

10-pin header connector

000

91-01 REV E 100-1390

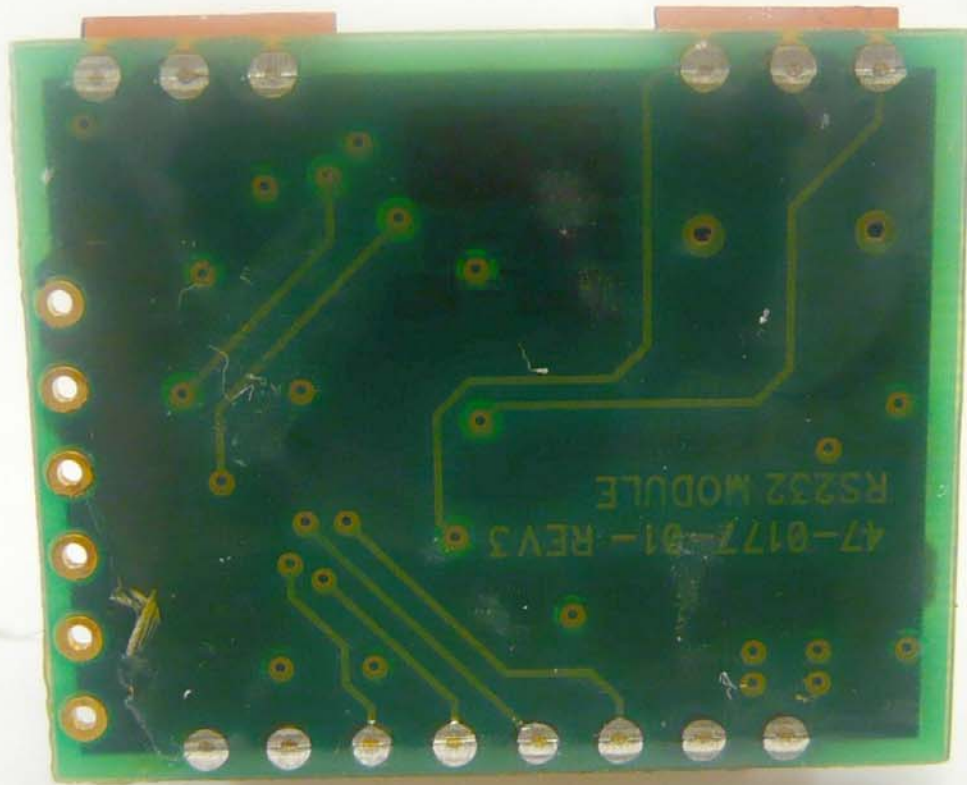




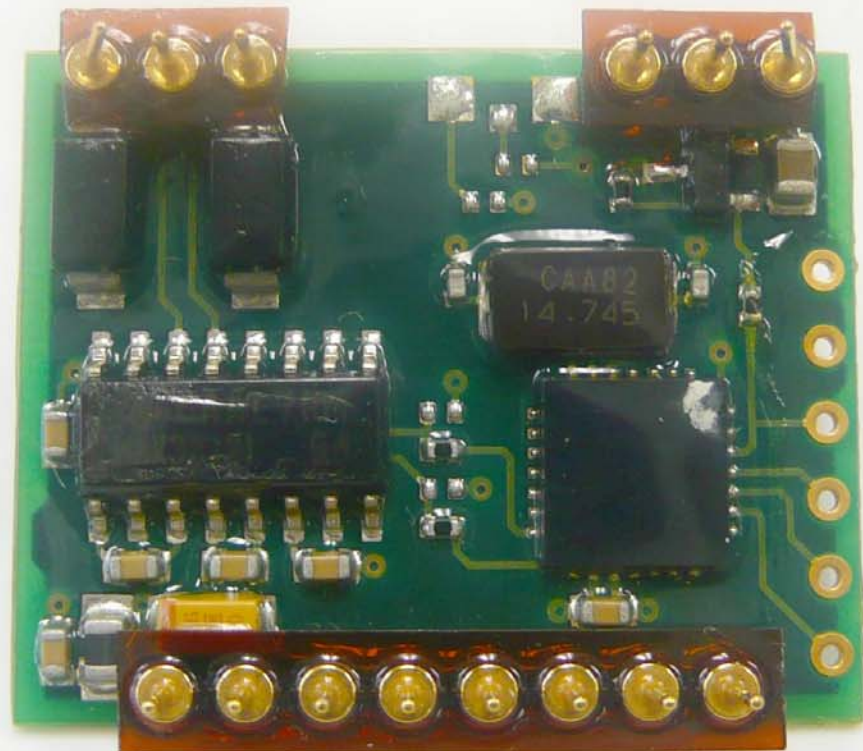
4320

21016

1111

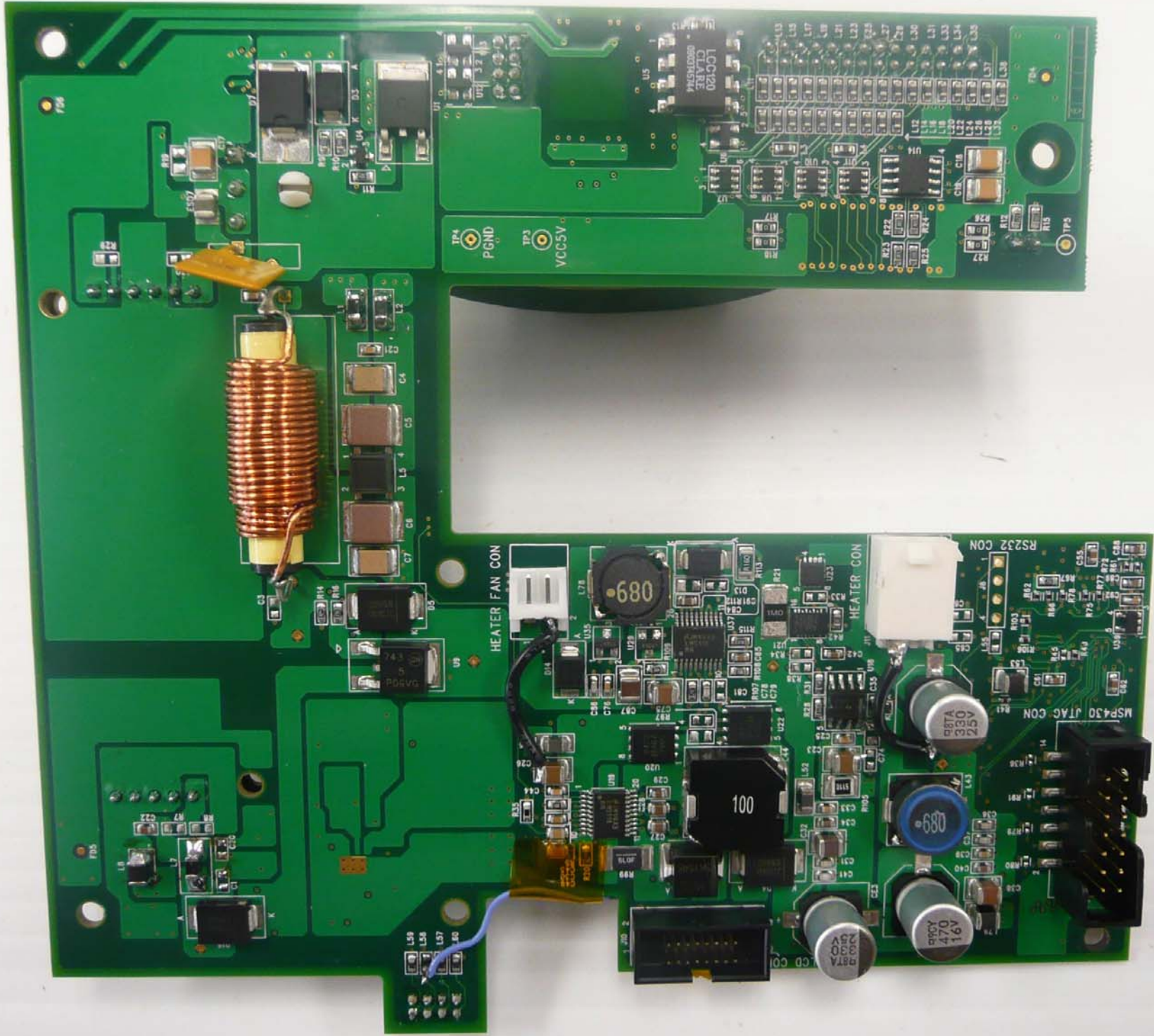


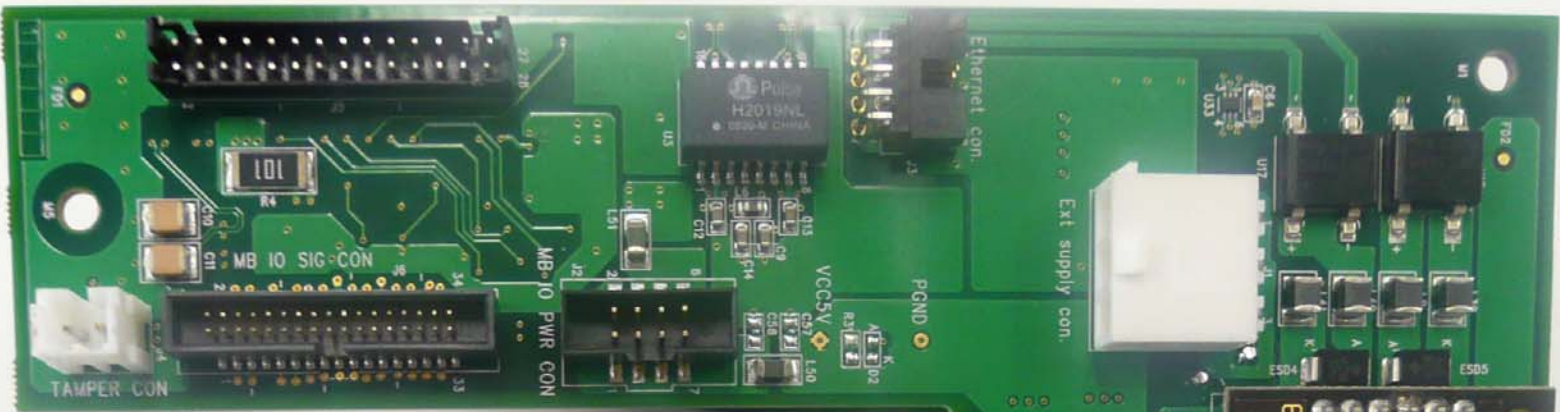
47-0177-01-REV3  
RS232 MODULE



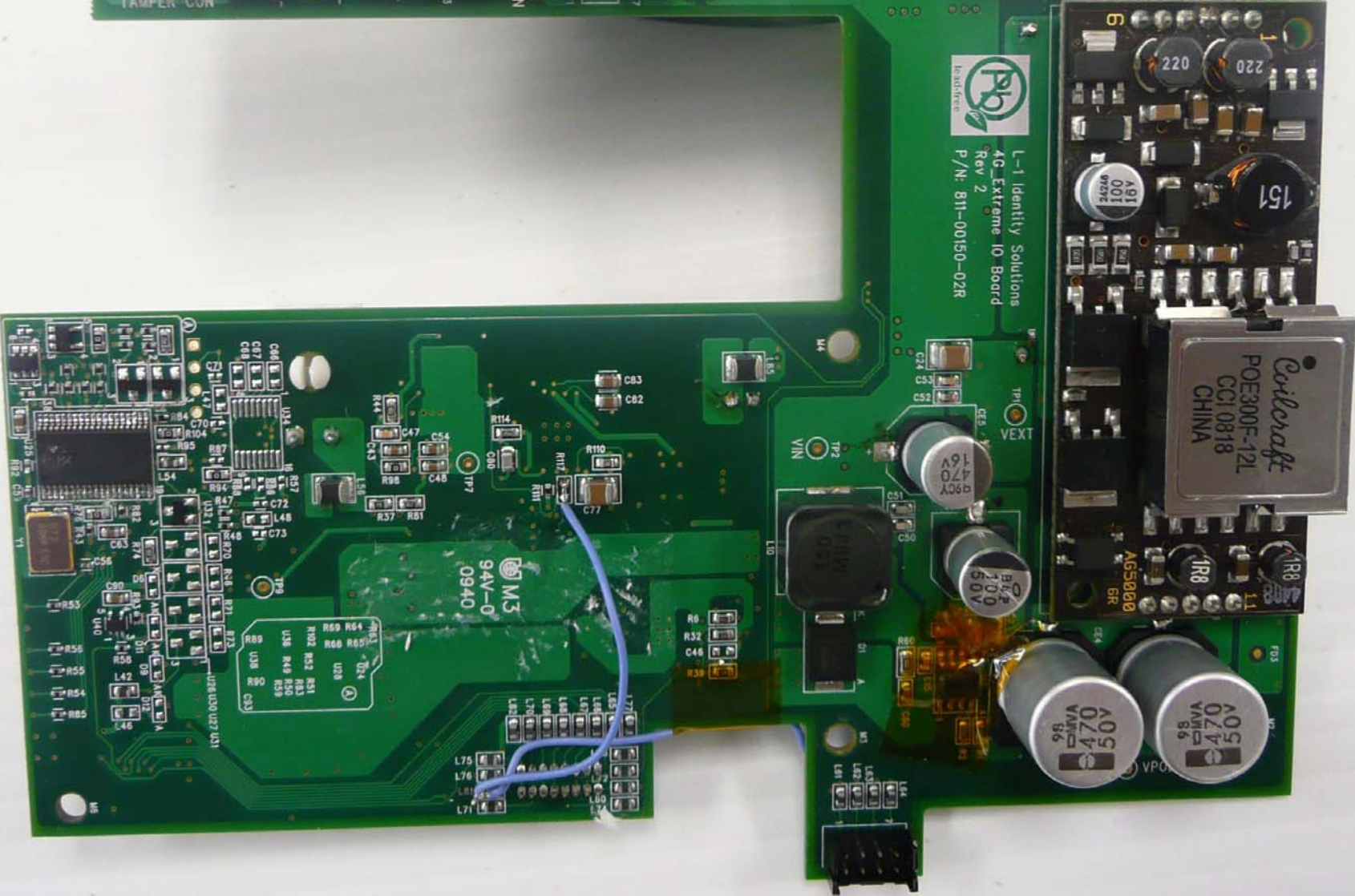








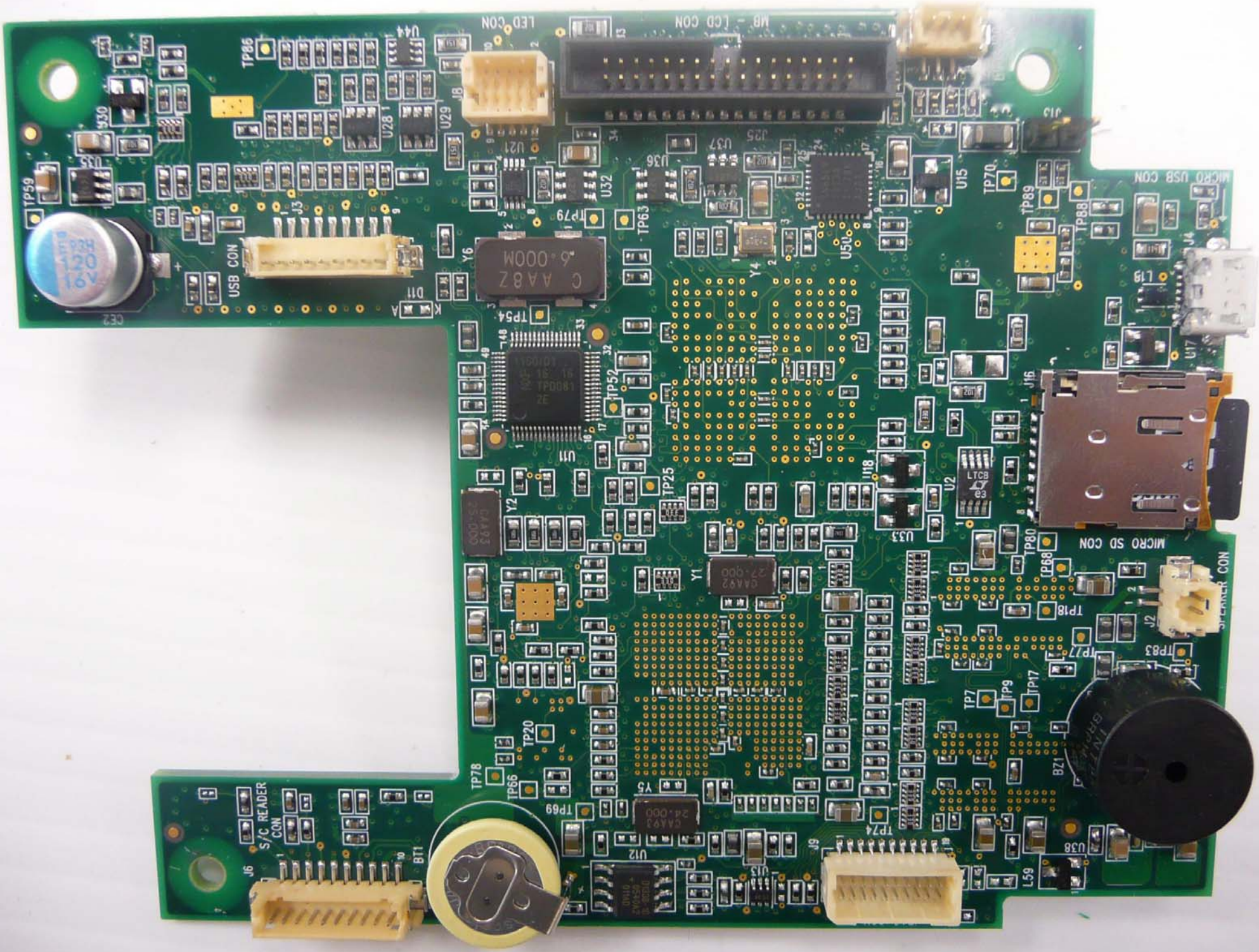
L-1 Identity Solutions  
AG\_Extreme IO Board  
Rev 2  
P/N: 81-00150-02R

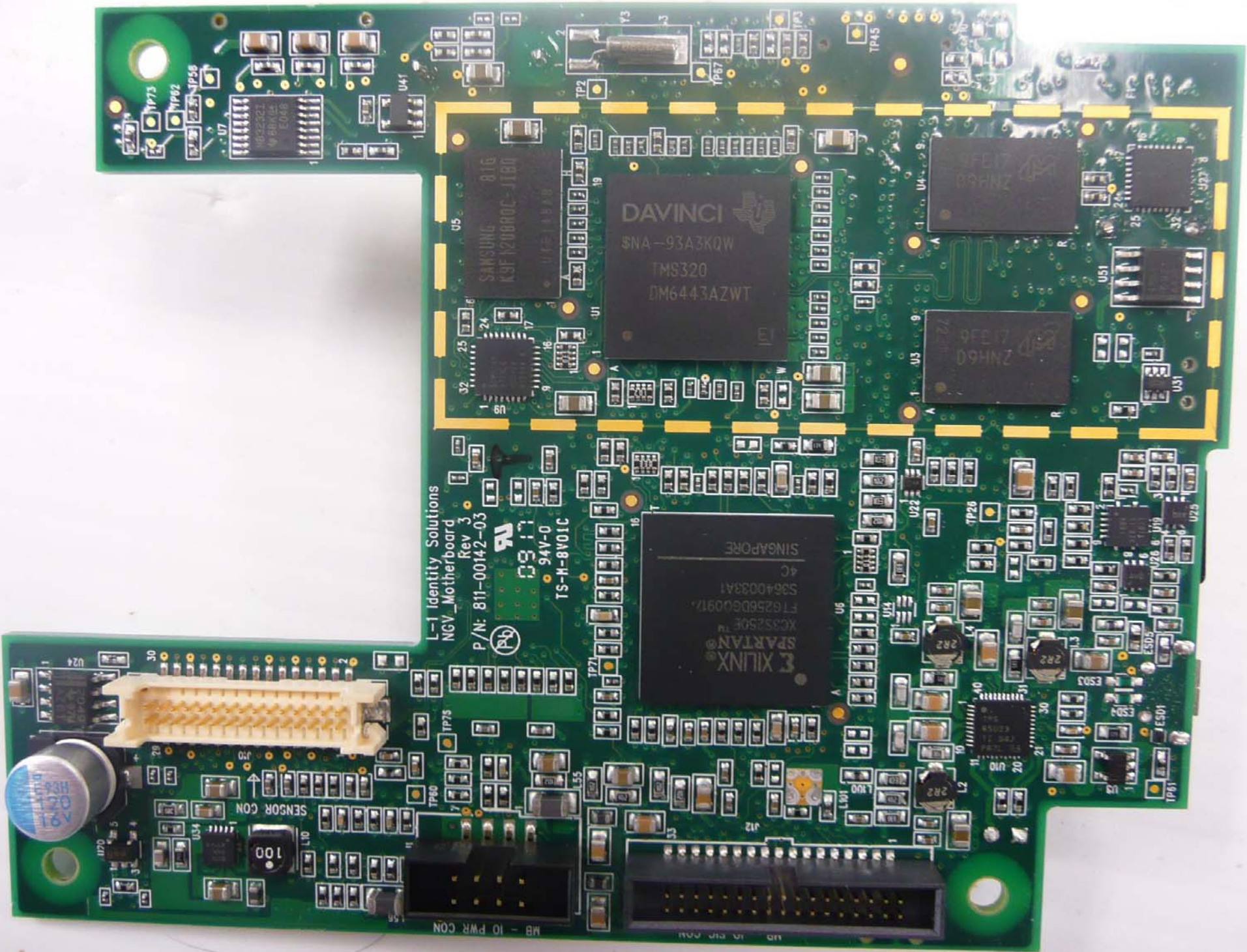












L-1 Identity Solutions  
NGV\_Motherboard  
Rev 3  
P/N: 811-00142-03

TS-M-8V01C  
94V-0

MB - 10 PWR CON

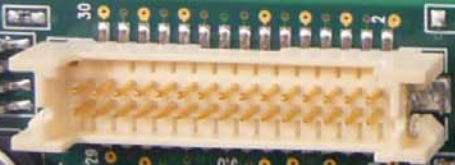
DAVINCI  
SNA-93A3KQW  
TMS320  
DM6443AZWT

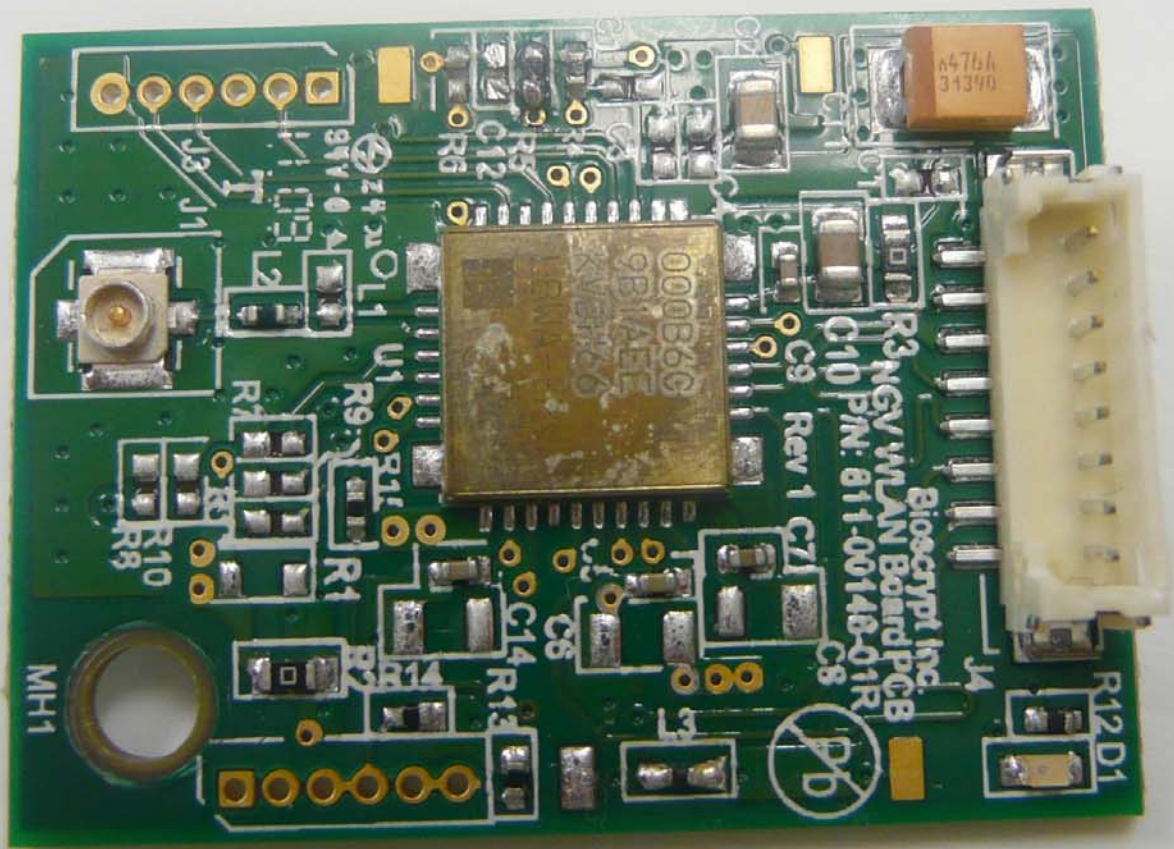
SAMSUNG  
K9F120800C-1T80

XILINX  
SPARTAN-3E  
XC3S250E  
FT6256D600917  
S9640033A1  
4C  
SINGAPORE

9FE17  
D9HNZ

9FE17  
D9HNZ





000B6C  
9B1AEL  
XVEN65

6476h  
31390

Biocrypt Inc.  
R3 NGV W/AN Board PCB  
C10 P/N: 811-00148-01R  
Rev 1

Pb

MH1

R10  
R9

R1  
R4

R13  
R14

R15  
R3

R12  
D1

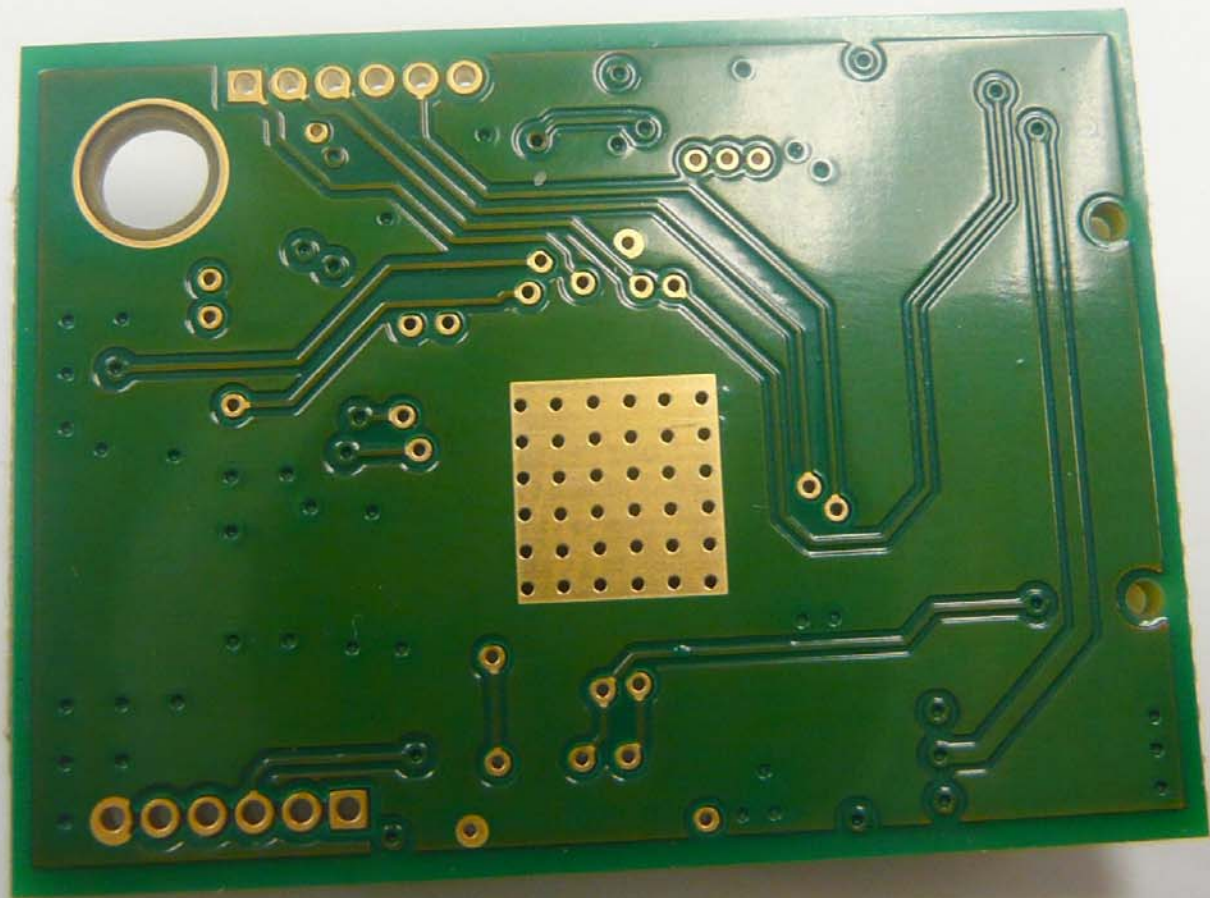
J1  
J3  
9V-0  
Q1

R5  
C12

C9  
C7

C10

J4





**Laird**  
TECHNOLOGIES

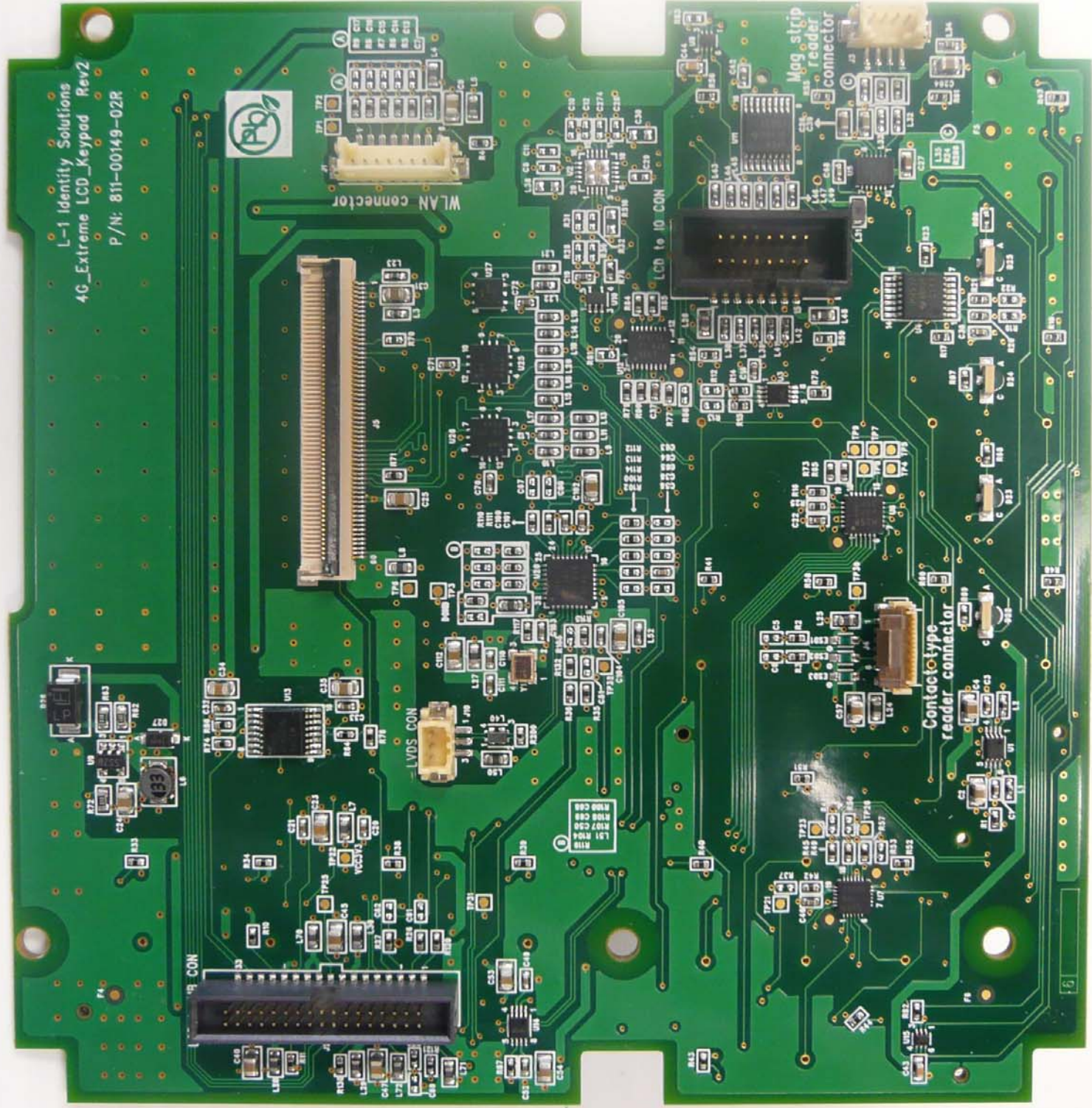
MULTIBAND

PROTECTED BY US PATENT : 6,943,734

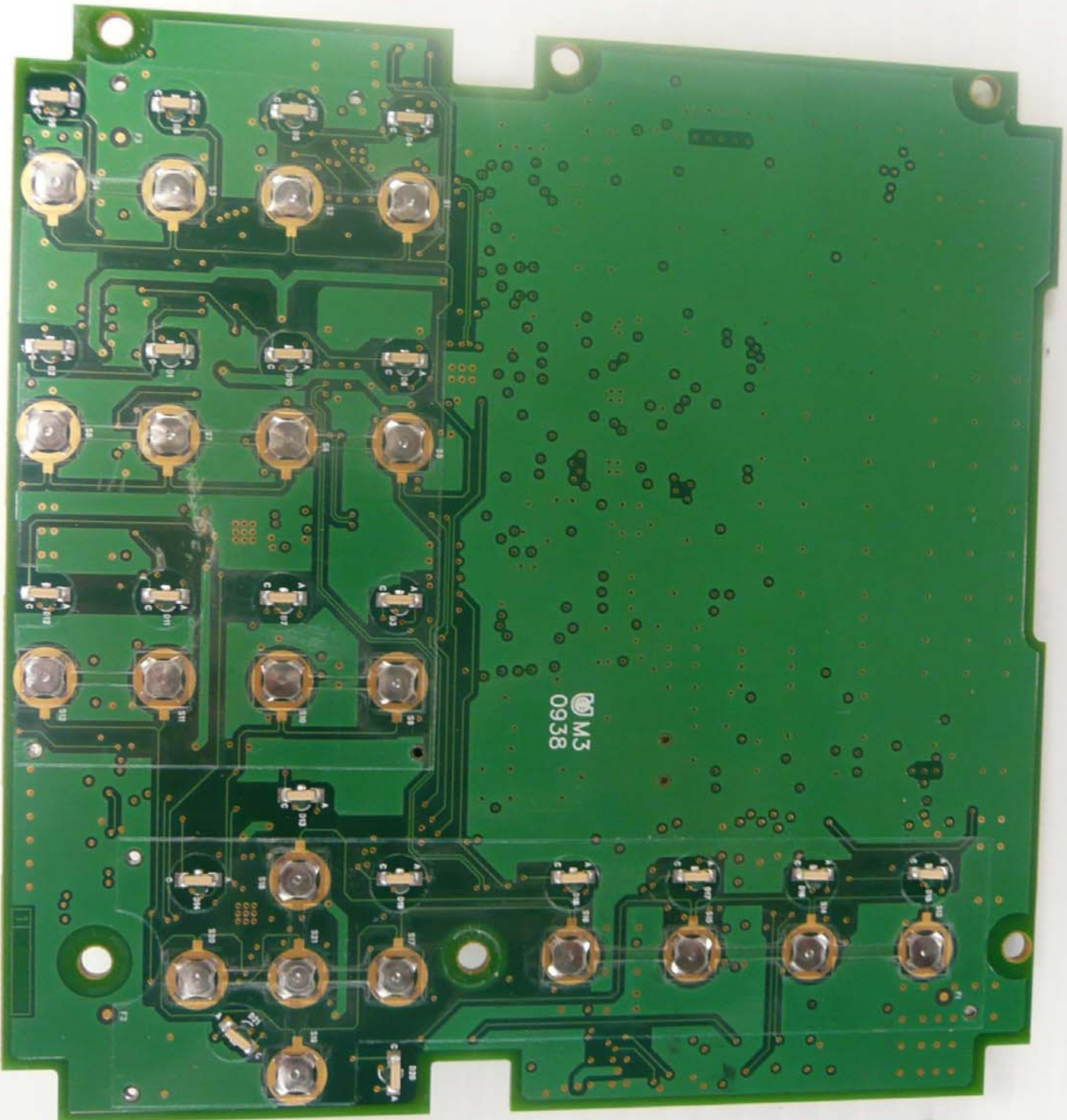
MAP24057



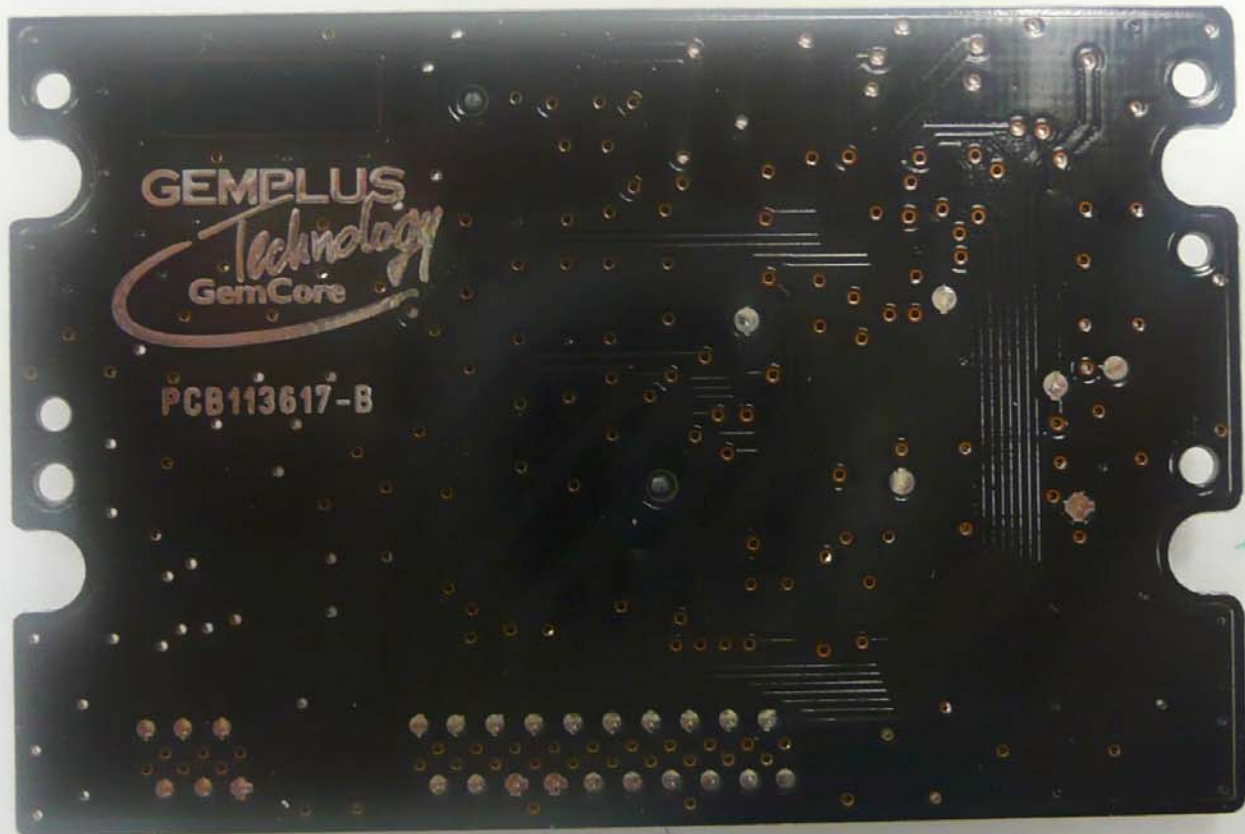
L-1 Identity Solutions  
4G\_Extreme\_LCD\_Keypad Rev2  
P/N: 811-00149-02R

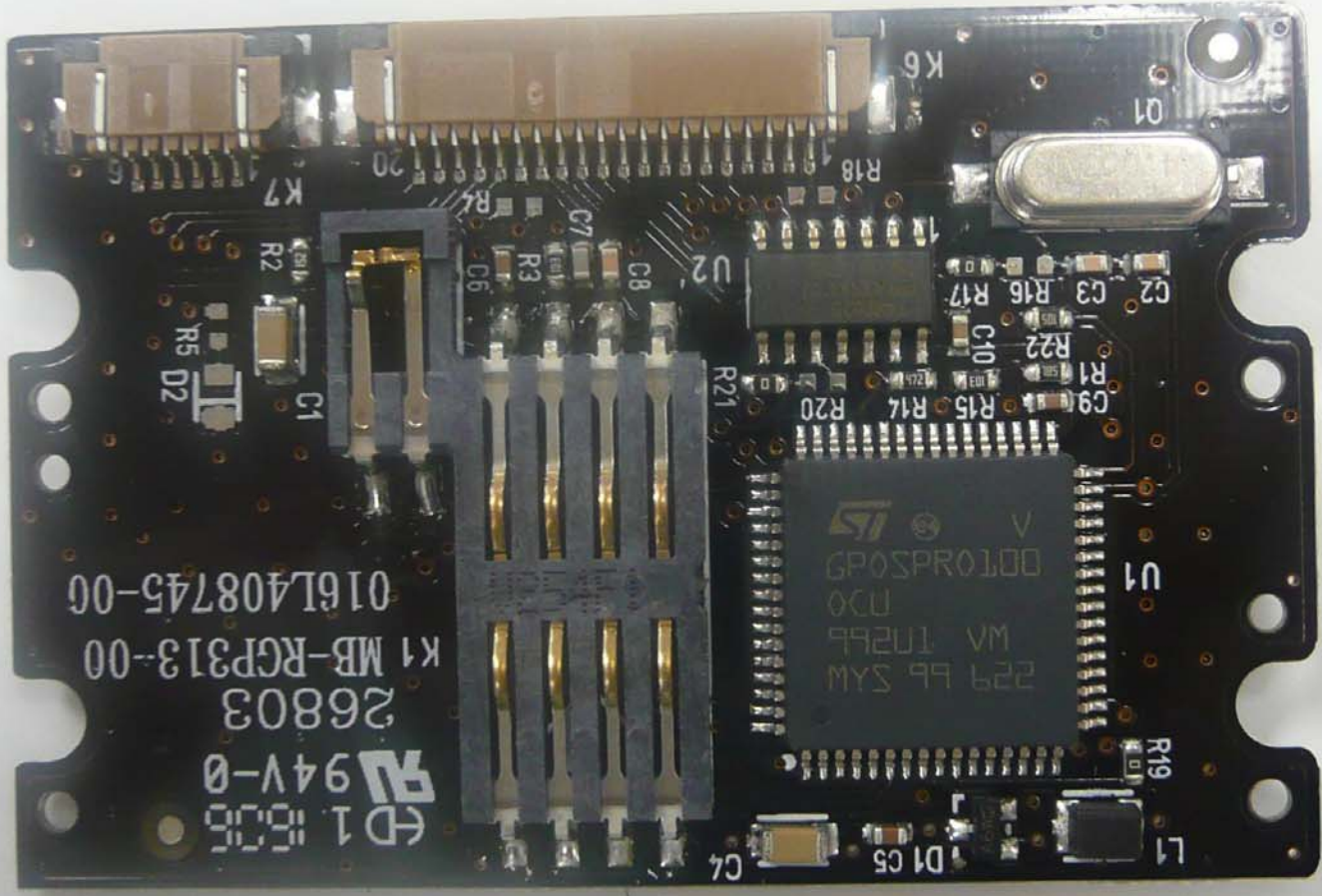






M3  
0938

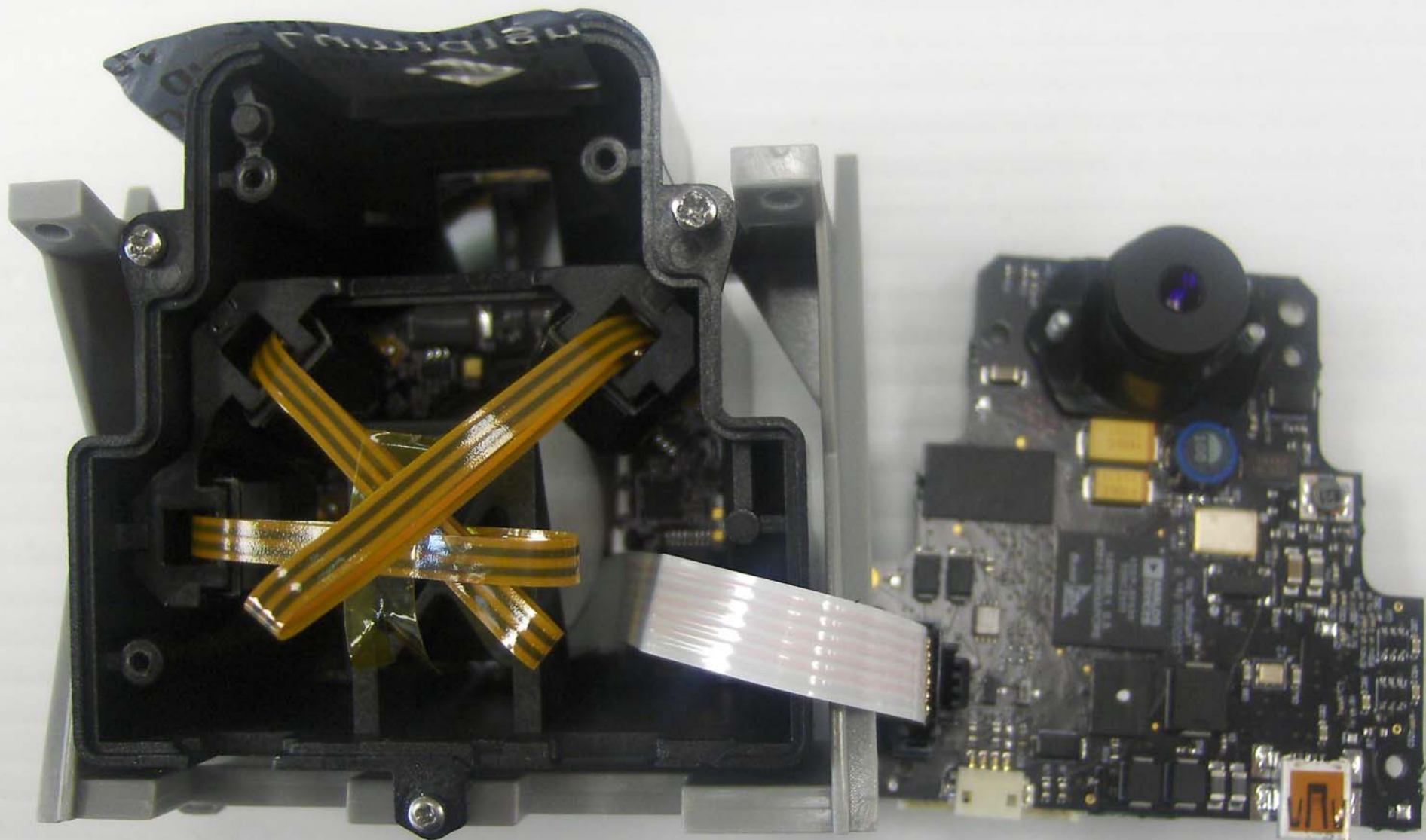


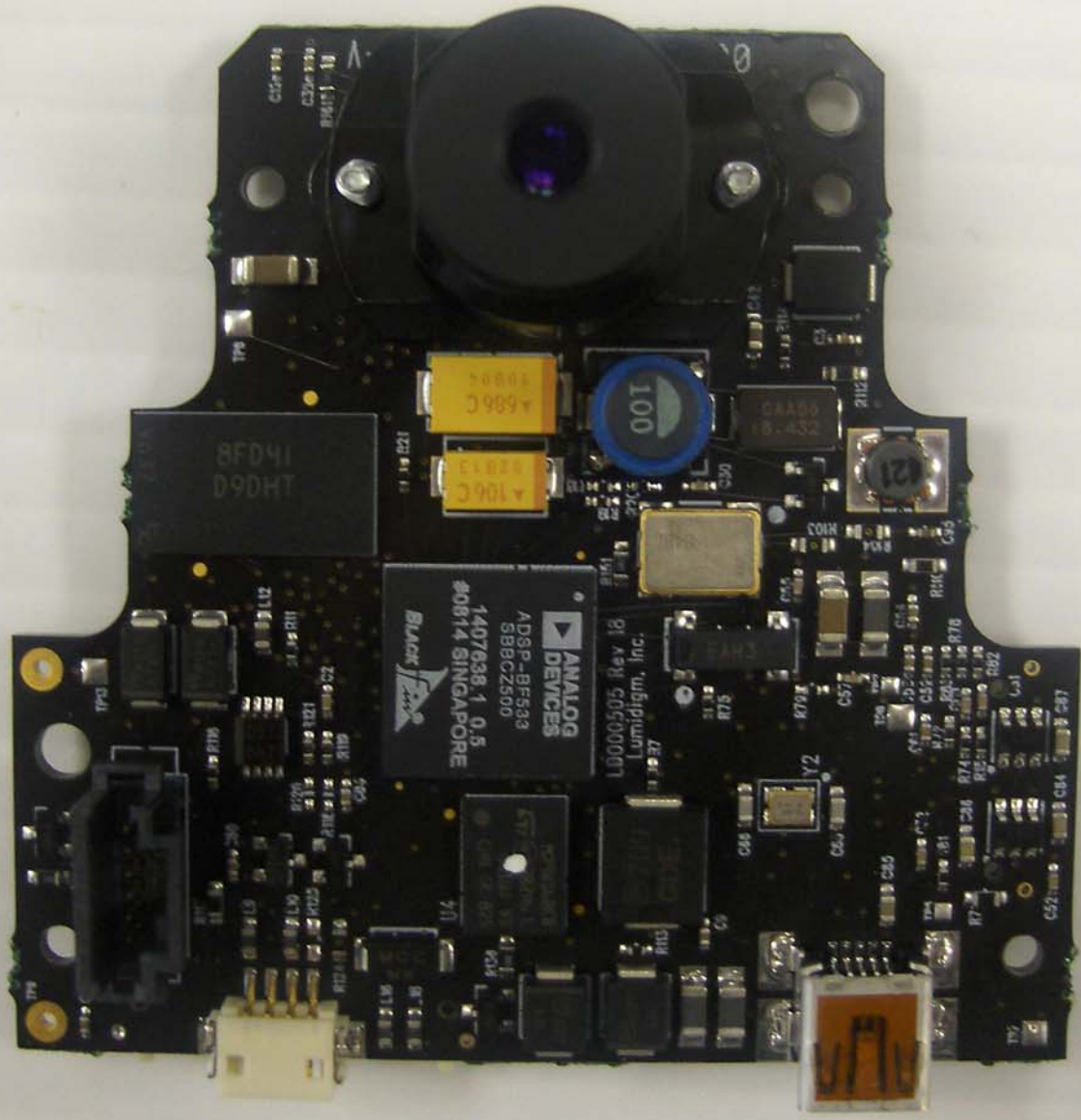


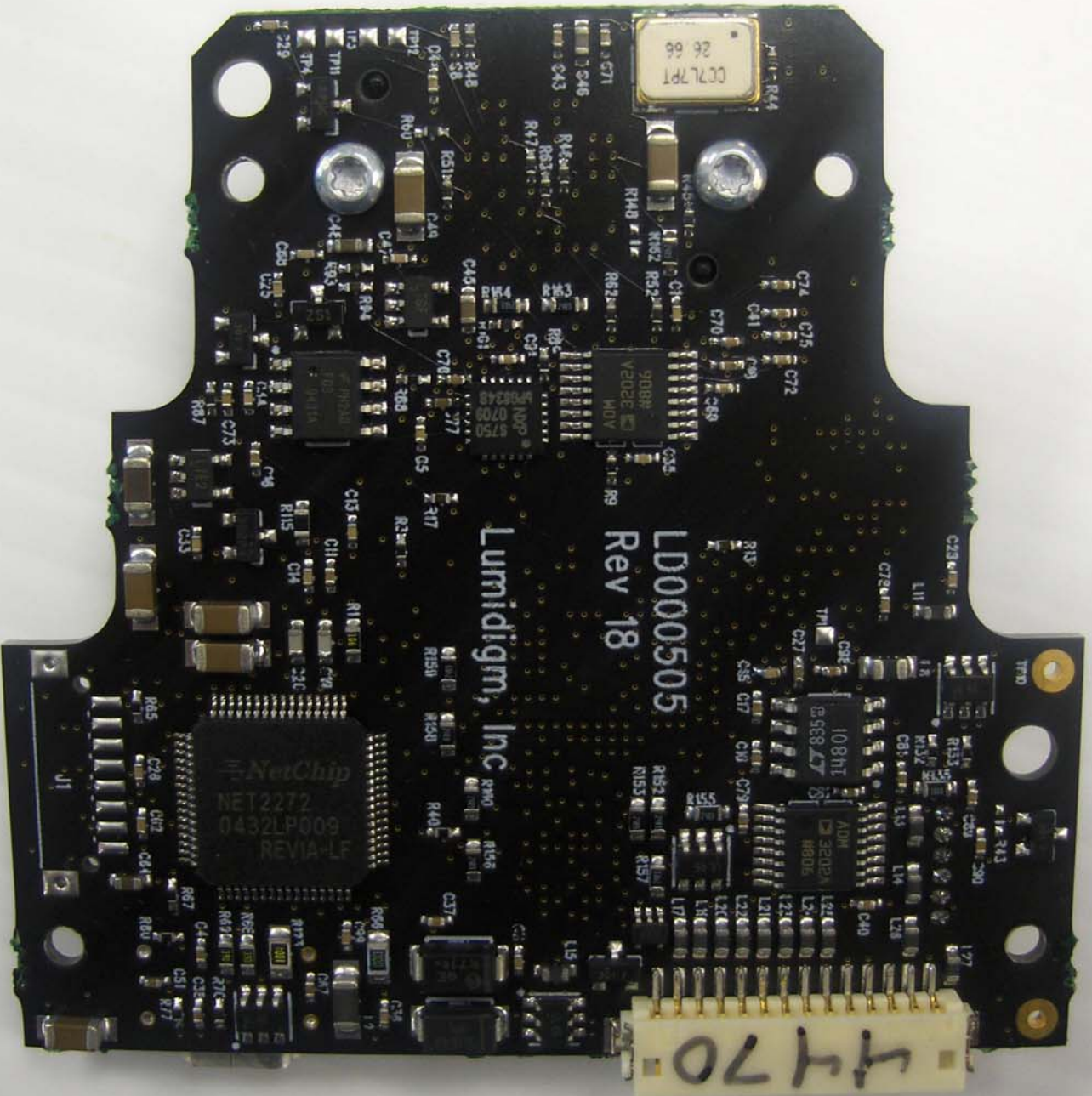
ED 1 806  
94V-0  
26803  
K1 MB-RGP313-00  
016L408745-00

LSI  
229 BP SYM  
MV 1U2PB  
D30  
D0T0P0S0P0

U1  
U2  
R1 R2 R3 R4 R5 R6 R7 R8 R9 R10 R11 R12 R13 R14 R15 R16 R17 R18 R19 R20 R21 R22  
C1 C2 C3 C4 C5 C6 C7 C8 C9 C10  
D1 D2  
L1 L2  
K1 K2 K3 K4 K5 K6 K7  
O1







CC2L7P1  
26 66

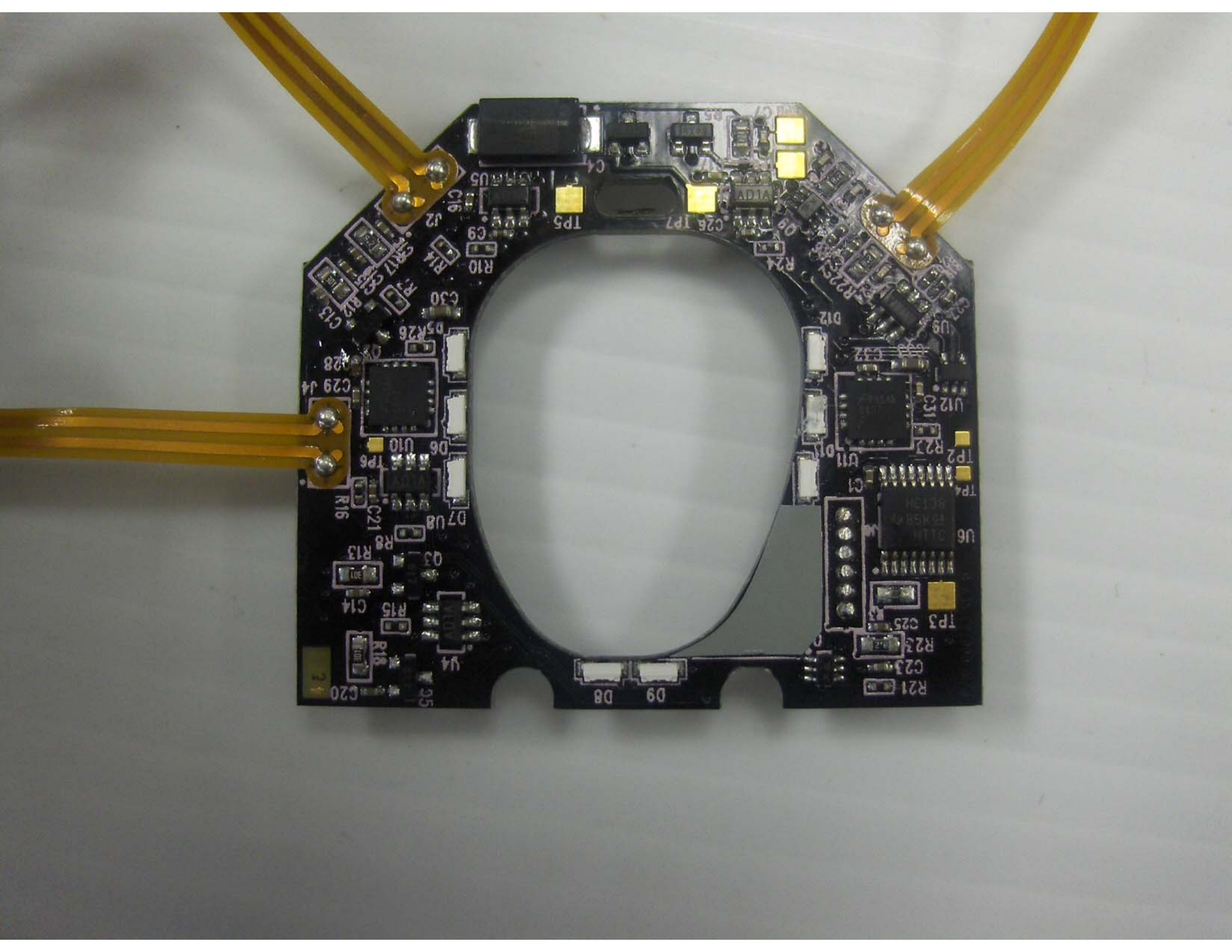
LD000505  
Rev 18

Lumidigm, Inc

NetChip  
NET2272  
0432LP009  
REVIA-LF

108H1  
ADM  
3892A  
8905

4470





S/N:



D3A1

D4A1



REV B

000000

E218213

94V-0

ASSY NO: 000763

RoHS

TP1

D2A1



D1A1



C10

C8

R9

TIR BOARD



R4

C6

C5

C2

C3

5