

L-1 Identity Solutions
4G Extreme Cooler Board
P/N: 811-00
Rev1

Cooler to IO Con.

DR127-4R7
250008 G

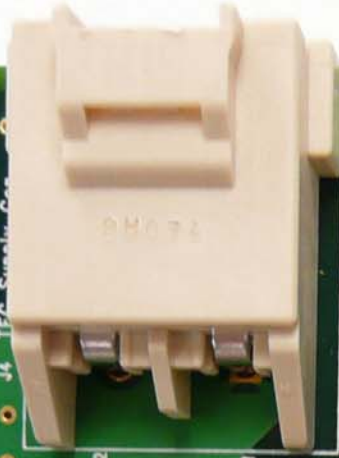
Steward
Z171R-10
PAT. NO. 5,455,552

Warning:
Service only by a qualified person.
Fuse replacement
must be identical to factory part
Itrip=10A, Max Volt =125V



M3
0938
FD2

MSP430 debug port
FD1



Ext Input Supply Con 3



Ext Fan Supply Con



MSP430 debug port

M4

1256

M3

M2

M1

FD3

L15

L14

L21

R12

U1

U3

U2

L13

L12

C2

R20

C8

R1

R3

R5

R7

C1

R8

R9

R10

R11

R13

R14

C3

C4

C5

C6

C7

C9

C10

C11

C12

C13

C14

C15

C16

C17

C18

C19

C20

C21

C22

C23

C24

L16

L17

L18

L19

L20

L21

L22

L23

L24

L25

L26

L27

L28

L29

L30

L31

L32

L33

L34

L35

L36

L37

L38

L39

L40

L41

L42

L43

L44

L45

L46

L47

L48

L49

L50

L51

L52

L53

L54

L55

L56

L57

L58

L59

L60

L61

L62

L63

L64

L65

L66

L67

L68

L69

L70

L71

L72

L73

L74

L75

L76

L77

L78

L79

L80

L81

L82

L83

L84

L85

L86

L87

L88

L89

L90

L91

L92

L93

L94

L95

L96

L97

L98

L99

L100

L101

L102

L103

L104

L105

L106

L107

L108

L109

L110

L111

L112

L113

L114

L115

L116

L117

L118

L119

L120

L121

L122

L123

L124

L125

L126

L127

L128

L129

L130

L131

L132

L133

L134

L135

L136

L137

L138

L139

L140

L141

L142

L143

L144

L145

L146

L147

L148

L149

L150

L151

L152

L153

L154

L155

L156

L157

L158

L159

L160

L161

L162

L163

L164

L165

L166

L167

L168

L169

L170

L171

L172

L173

L174

L175

L176

L177

L178

L179

L180

L181

L182

L183

L184

L185

L186

L187

L188

L189

L190

L191

L192

L193

L194

L195

L196

L197

L198

L199

L200

L201

L202

L203

L204

L205

L206

L207

L208

L209

L210

L211

L212

L213

L214

L215

L216

L217

L218

L219

L220

L221

L222

L223

L224

L225

L226

L227

L228

L229

L230

L231

L232

L233

L234

L235

L236

L237

L238

L239

L240

L241

L242

L243

L244

L245

L246

L247

L248

L249

L250

L251

L252

L253

L254

L255

L256

L257

L258

L259

L260

L261

L262

L263

L264

L265

L266

L267

L268

L269

L270

L271

L272

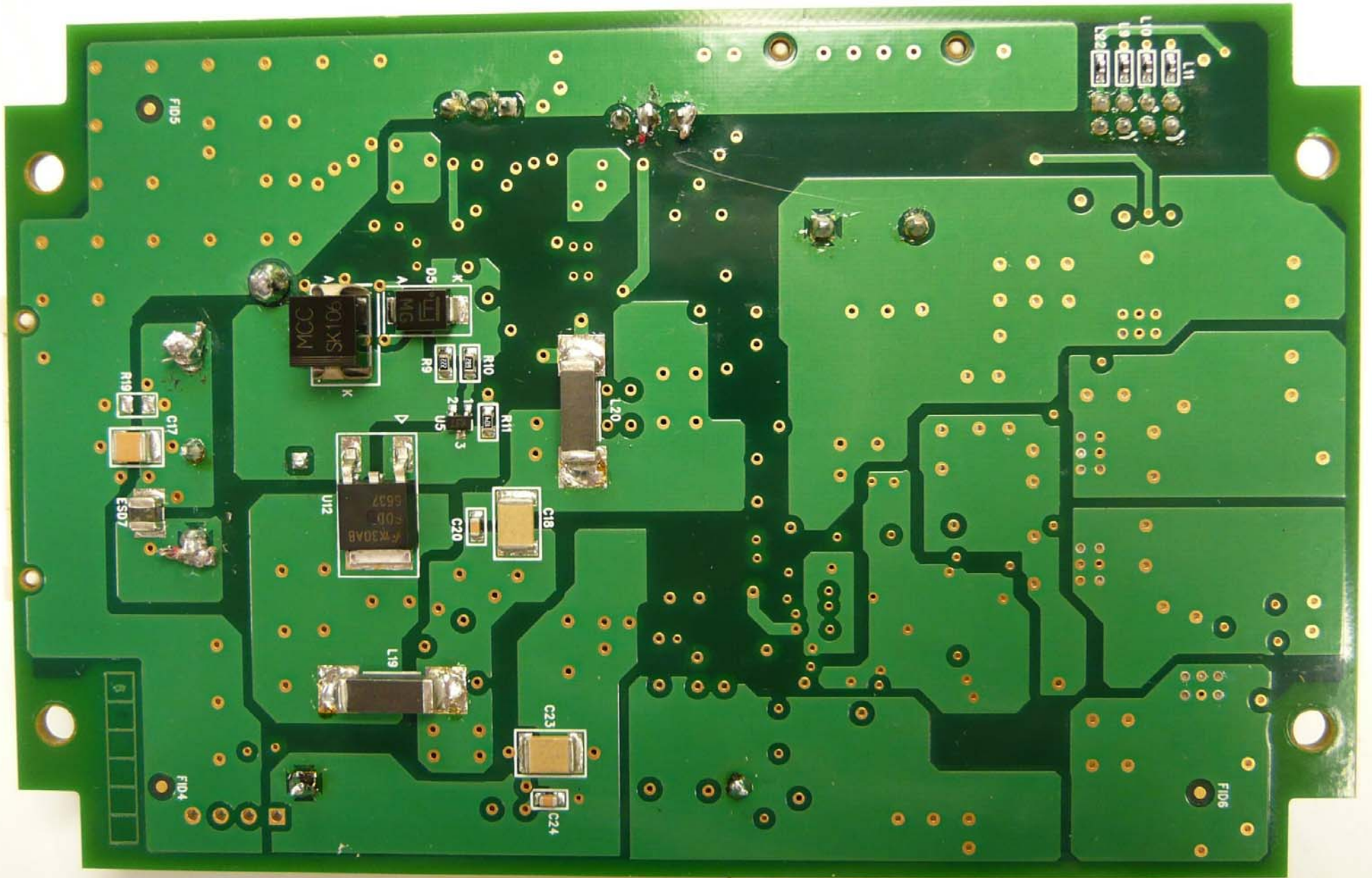
L273

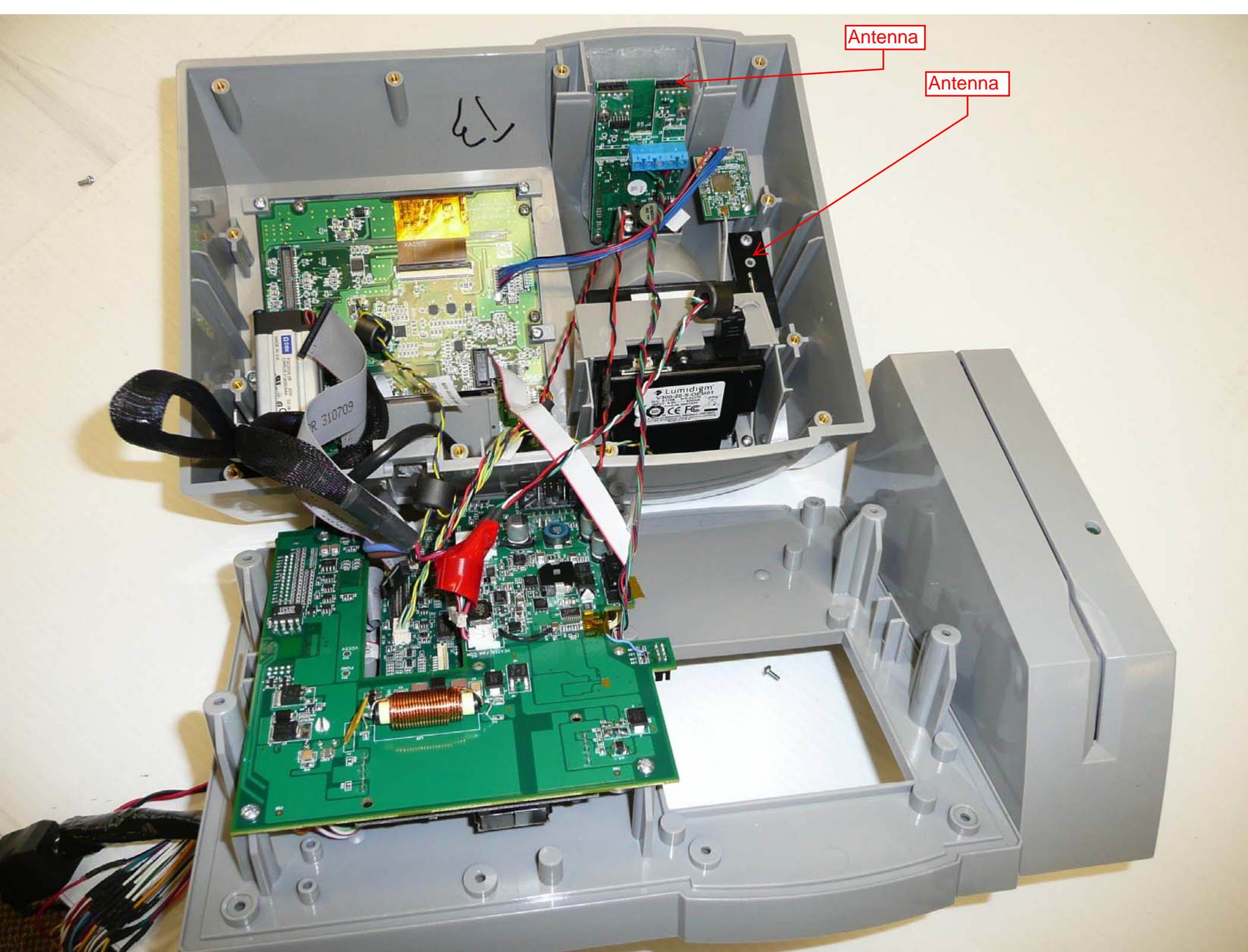
L274

L275

L276

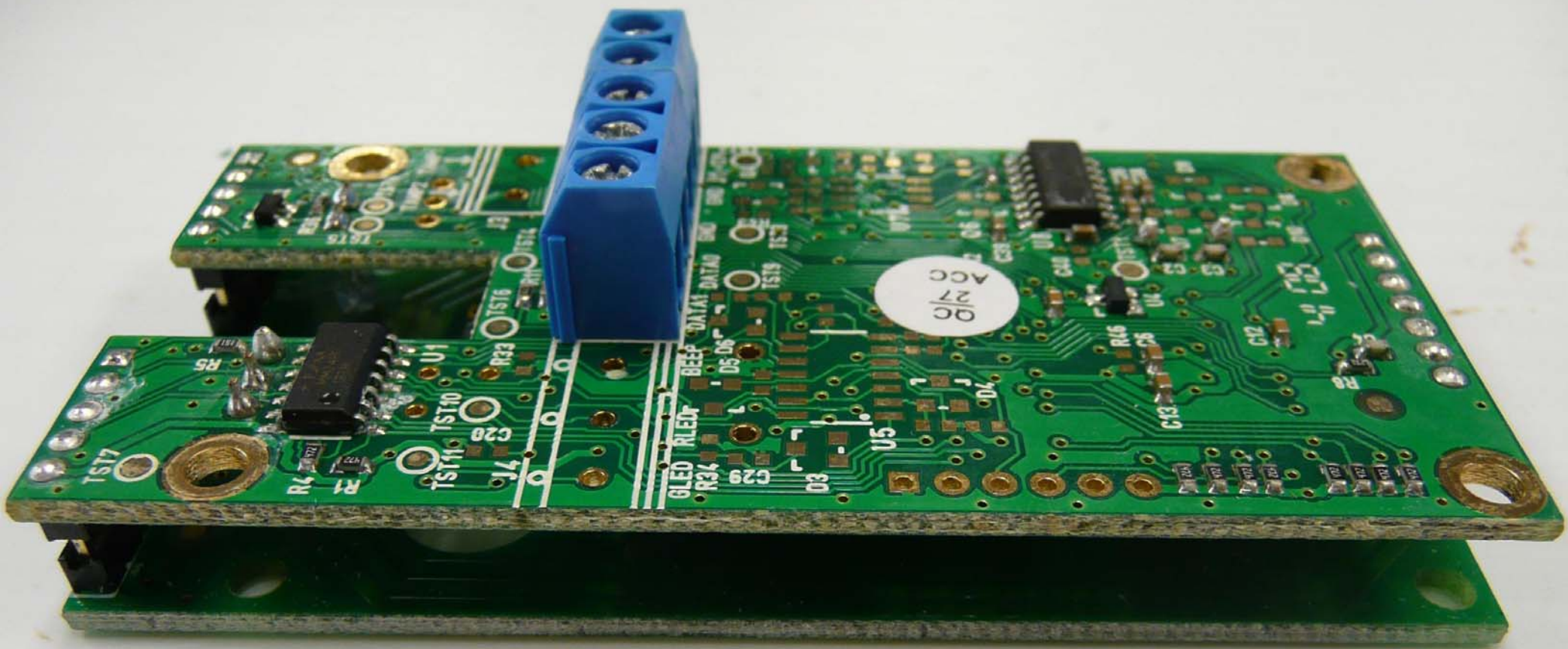
L2

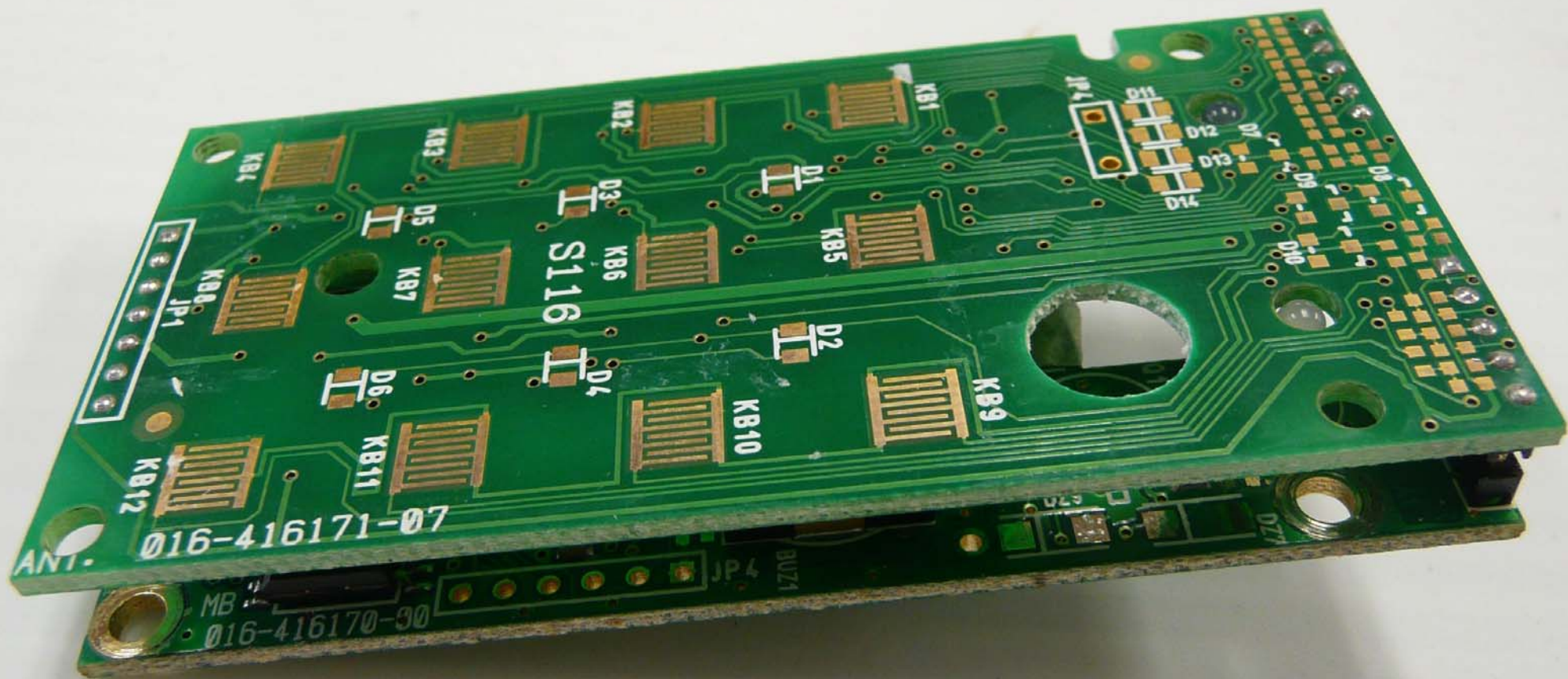


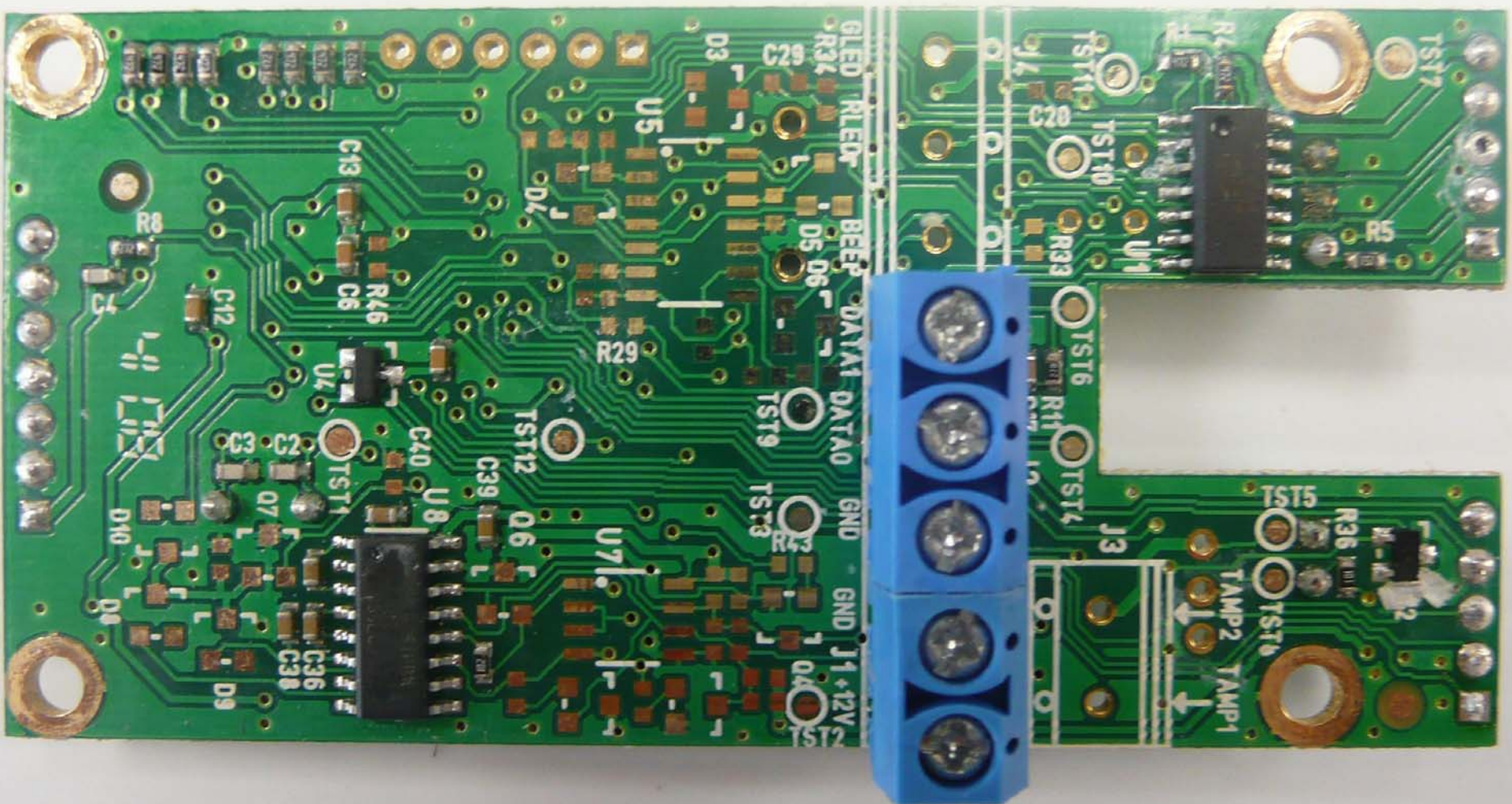


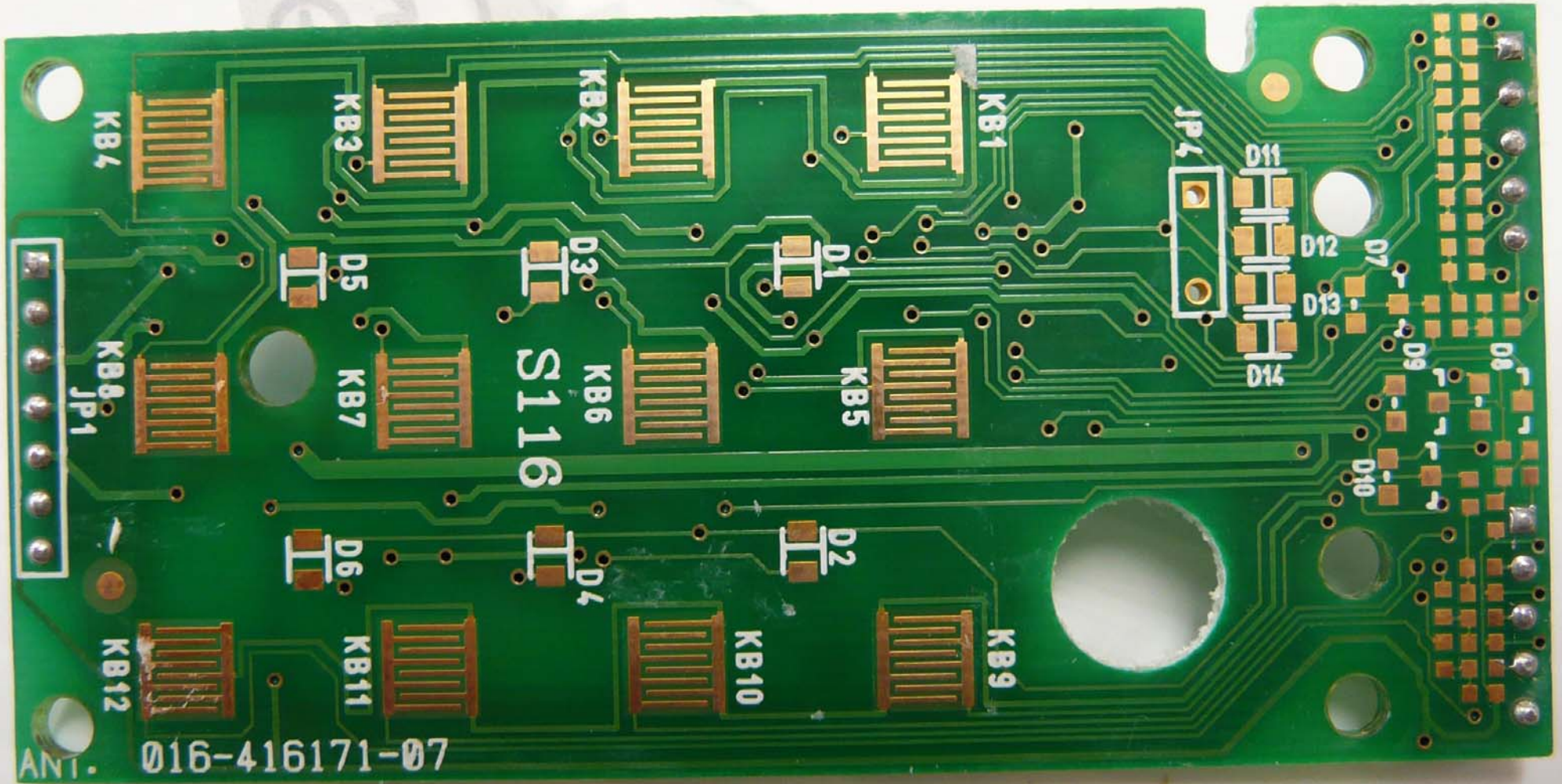
Antenna

Antenna









ANT. 016-416171-07

GEMPLUS
ANTENNA
& KEYPAD
PCB107277A0

1 94V-0

4 0703

JP3

JP2

C9
C8
C6
C7
C4
C3
C1
C2

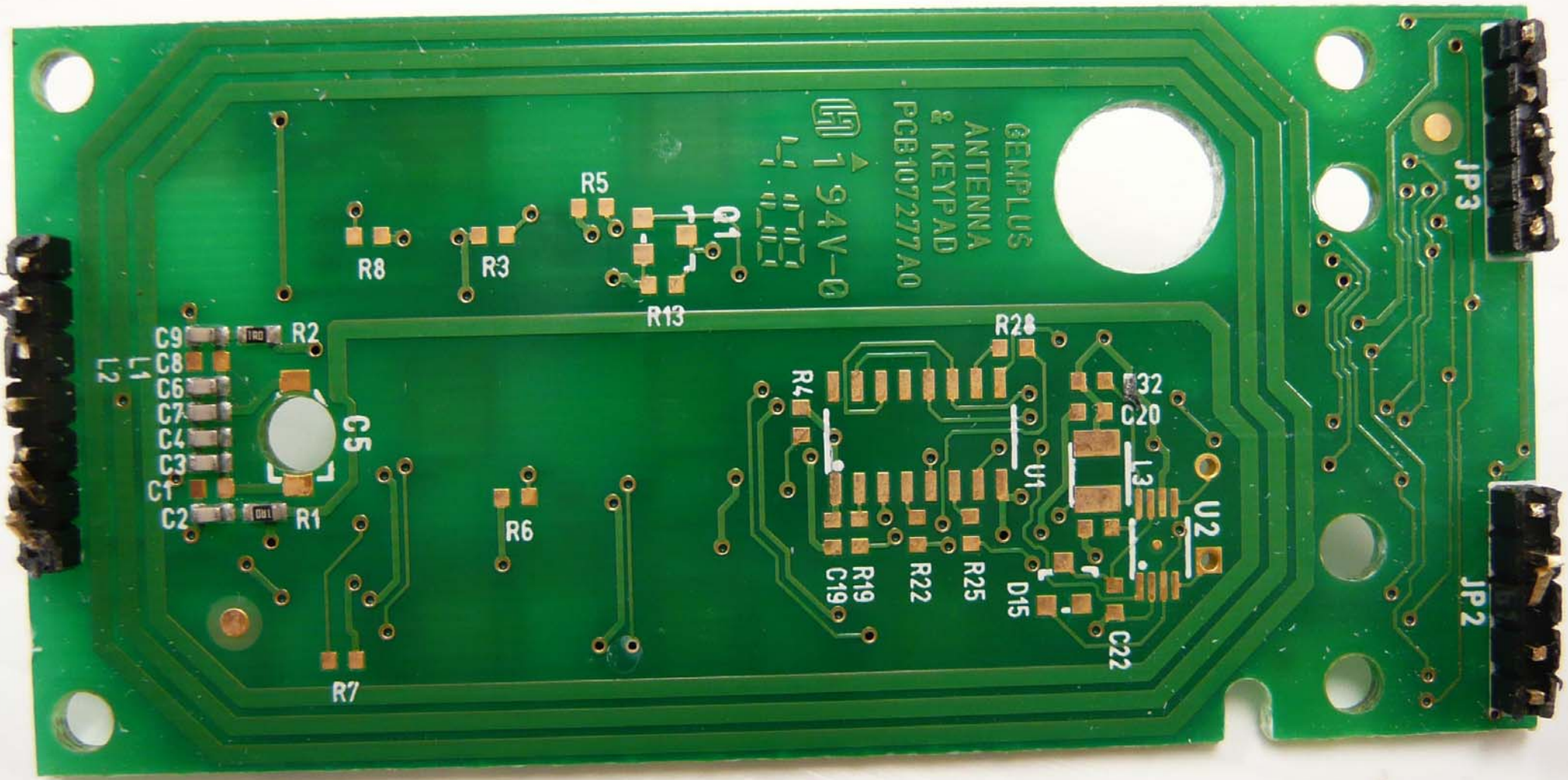
R8
R3
R5
R13

C5

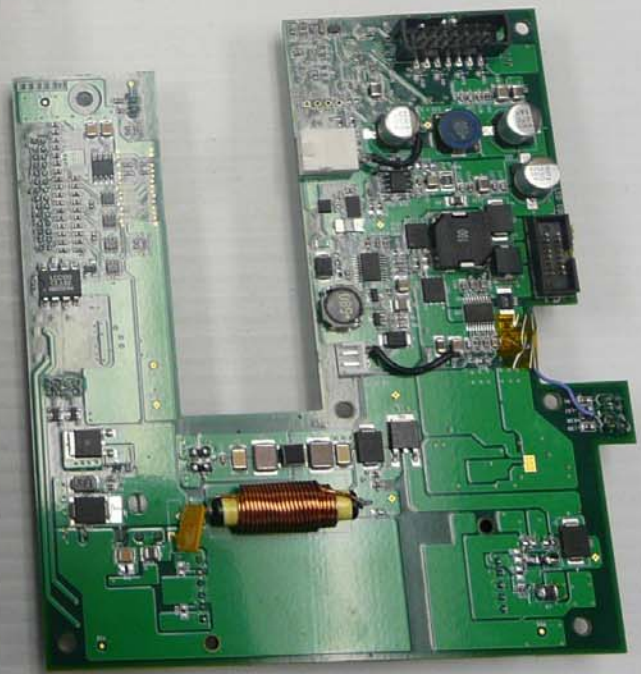
R6

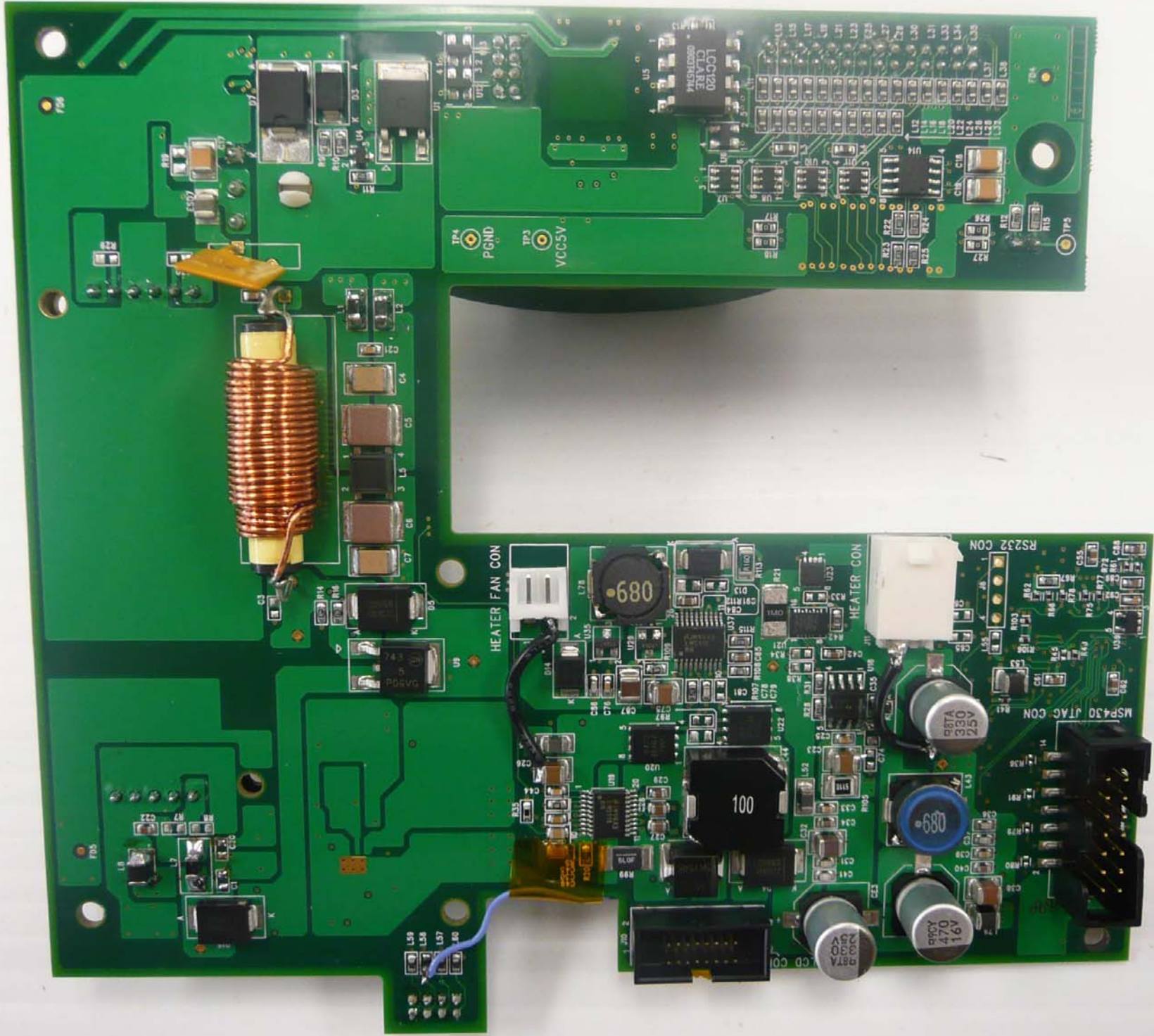
R28
U1
U2
D15
R25
R22
R19
C19
R4
R22
C20
L3
C22

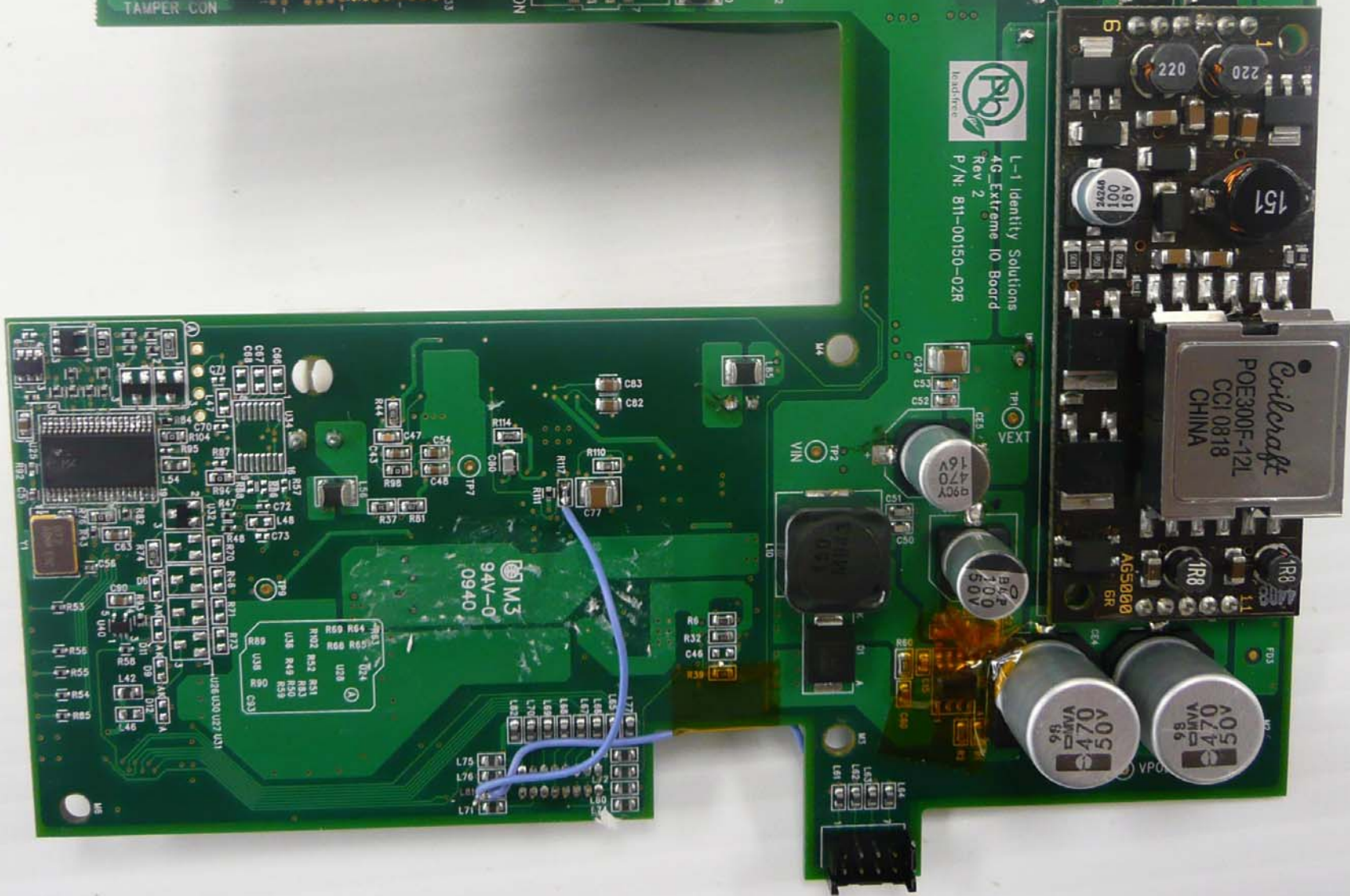
R7

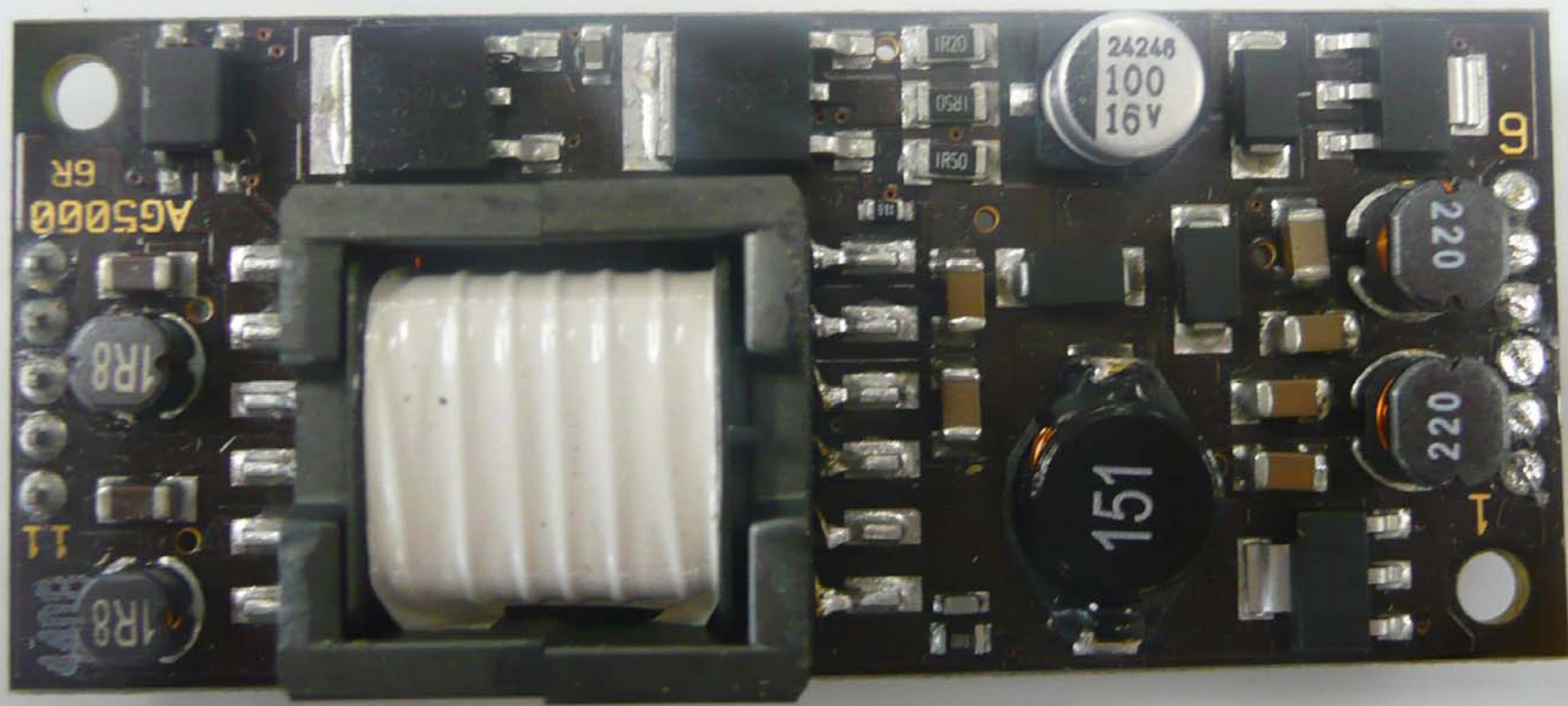












AG5000 6R

11

1R8

1R8

1R20

0581

1R50

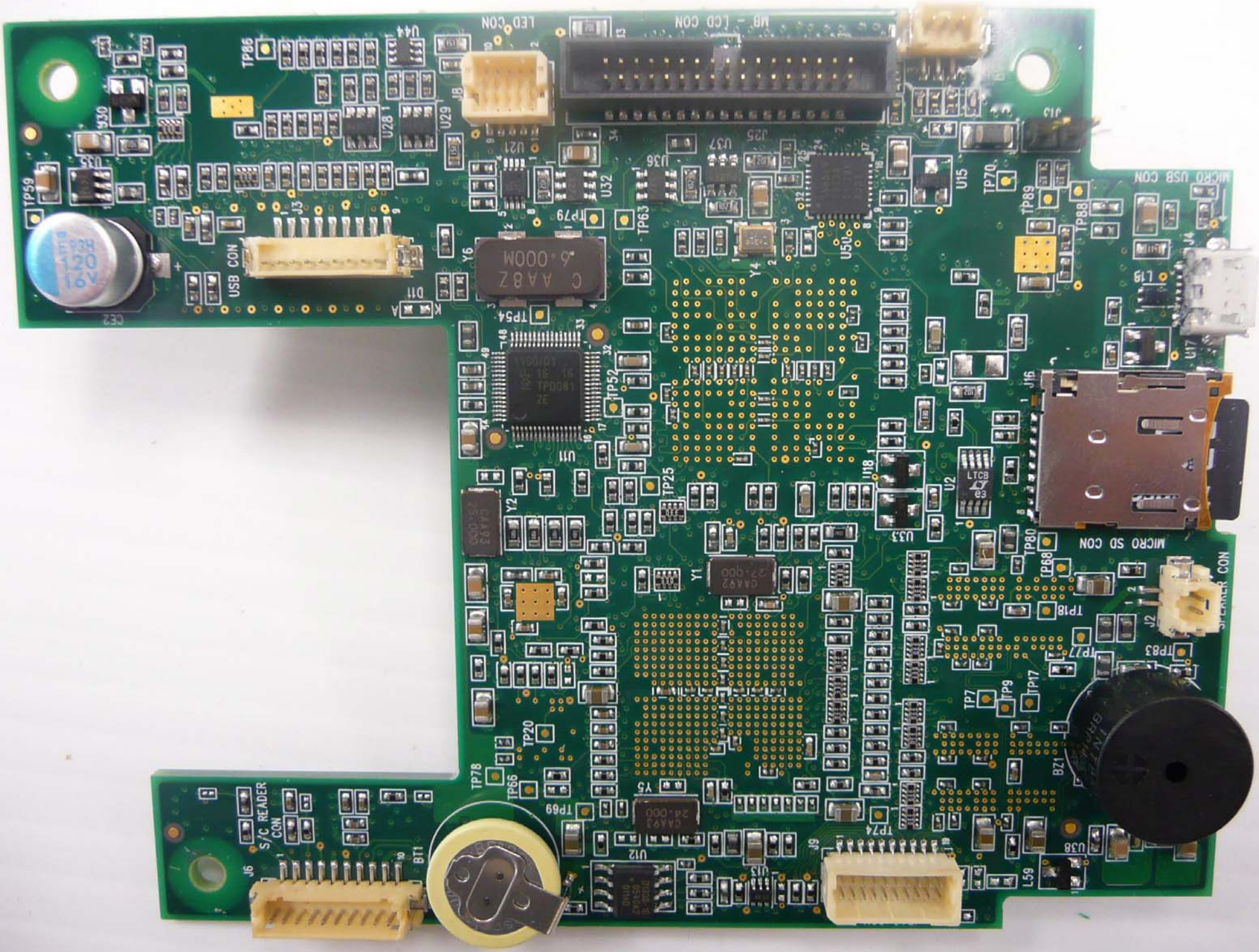
24248
100
16V

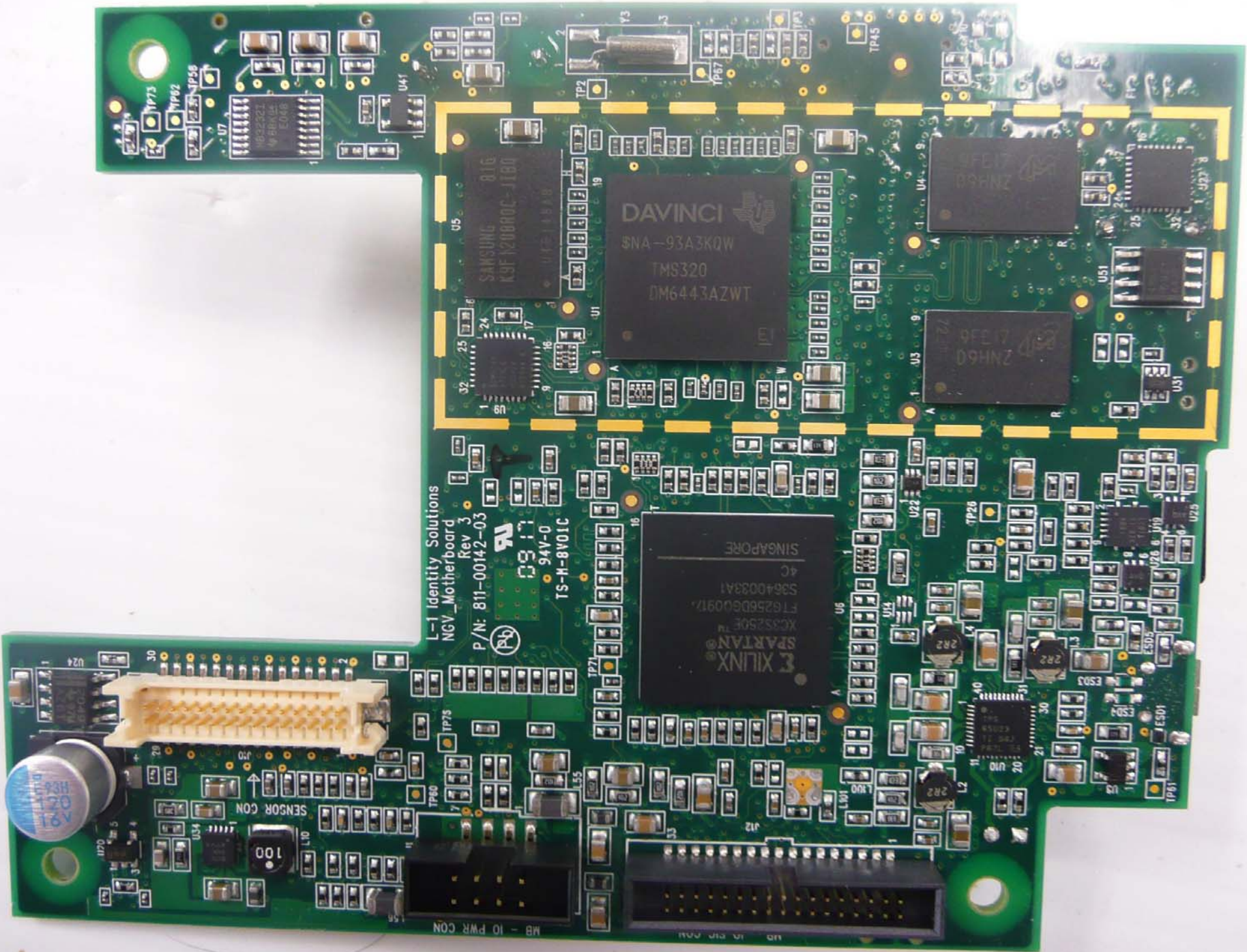
220

022

151

6





L-1 Identity Solutions
NGV_Motherboard
Rev 3
P/N: 811-00142-03

TS-M-8V01C
94V-0



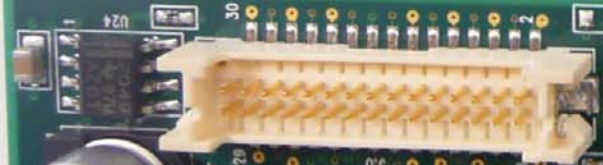
DAVINCI
SNA-93A3KQW
TMS320
DM6443AZWT

SAMSUNG
K9F120800C-1T80

XILINX
SPARTAN
XC3S250E
FT6256D600917
S9640033A1
4C
SINGAPORE

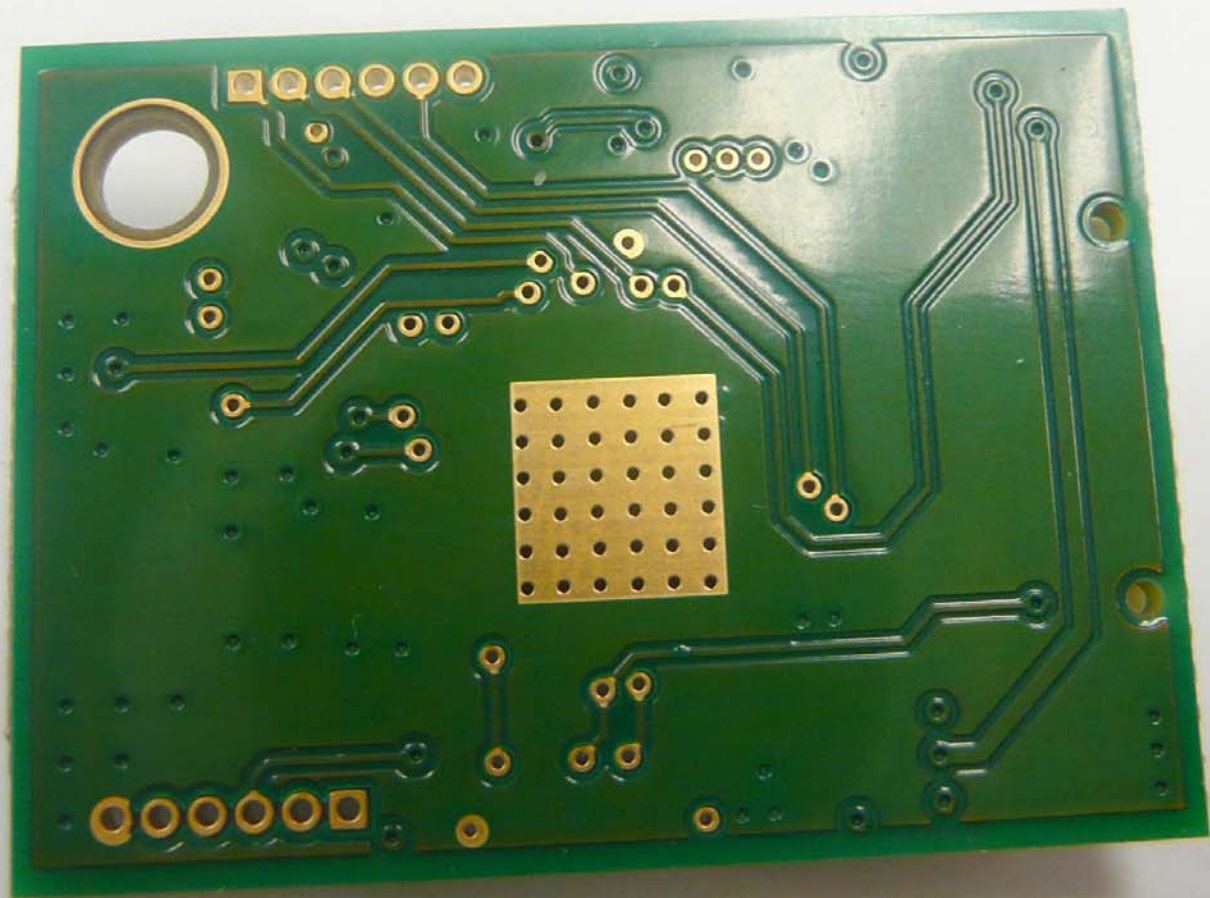
9FE17
D9HNZ

9FE17
D9HNZ



MB - 10 PWR CON

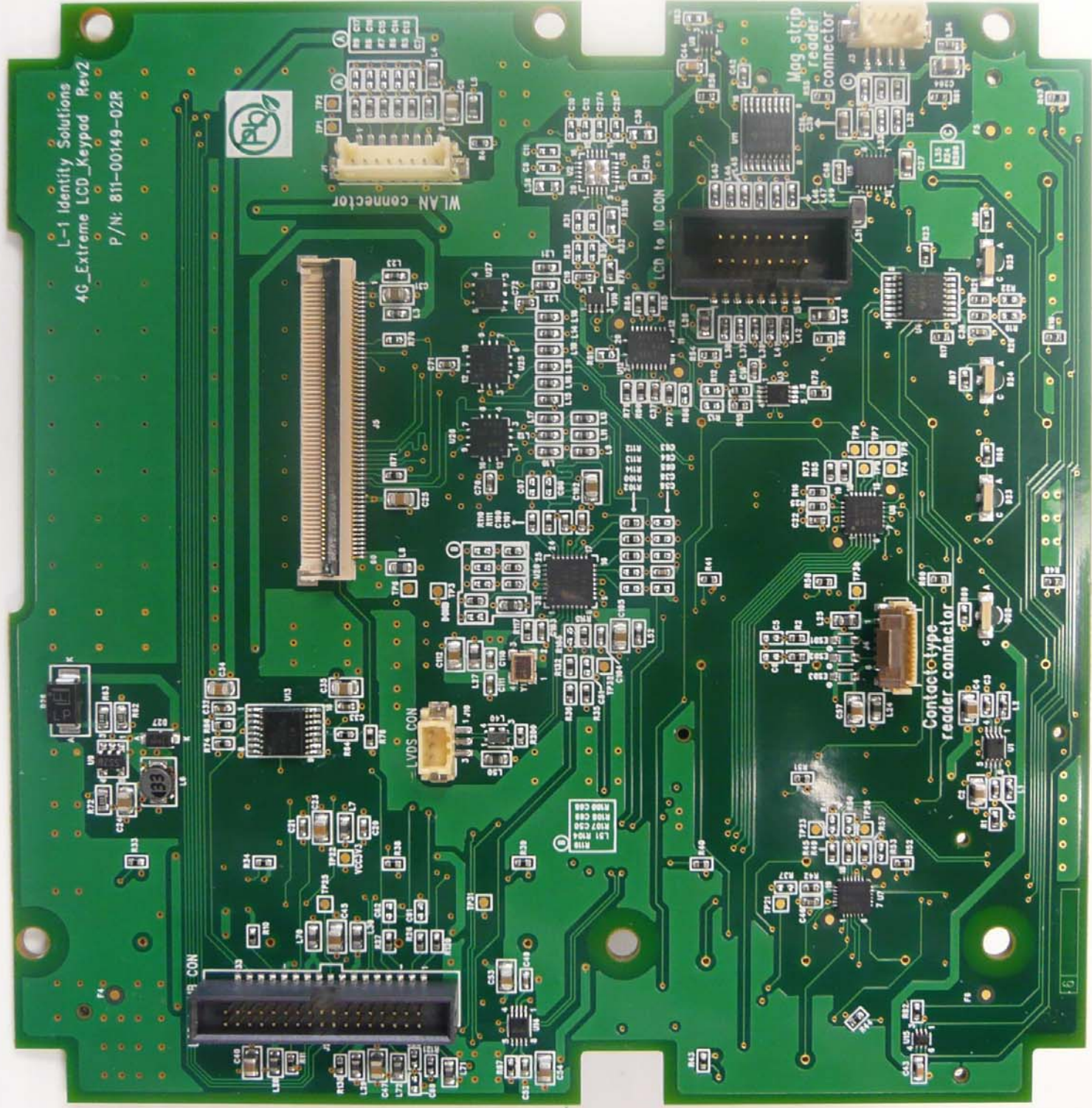
MB - 10 PWR CON

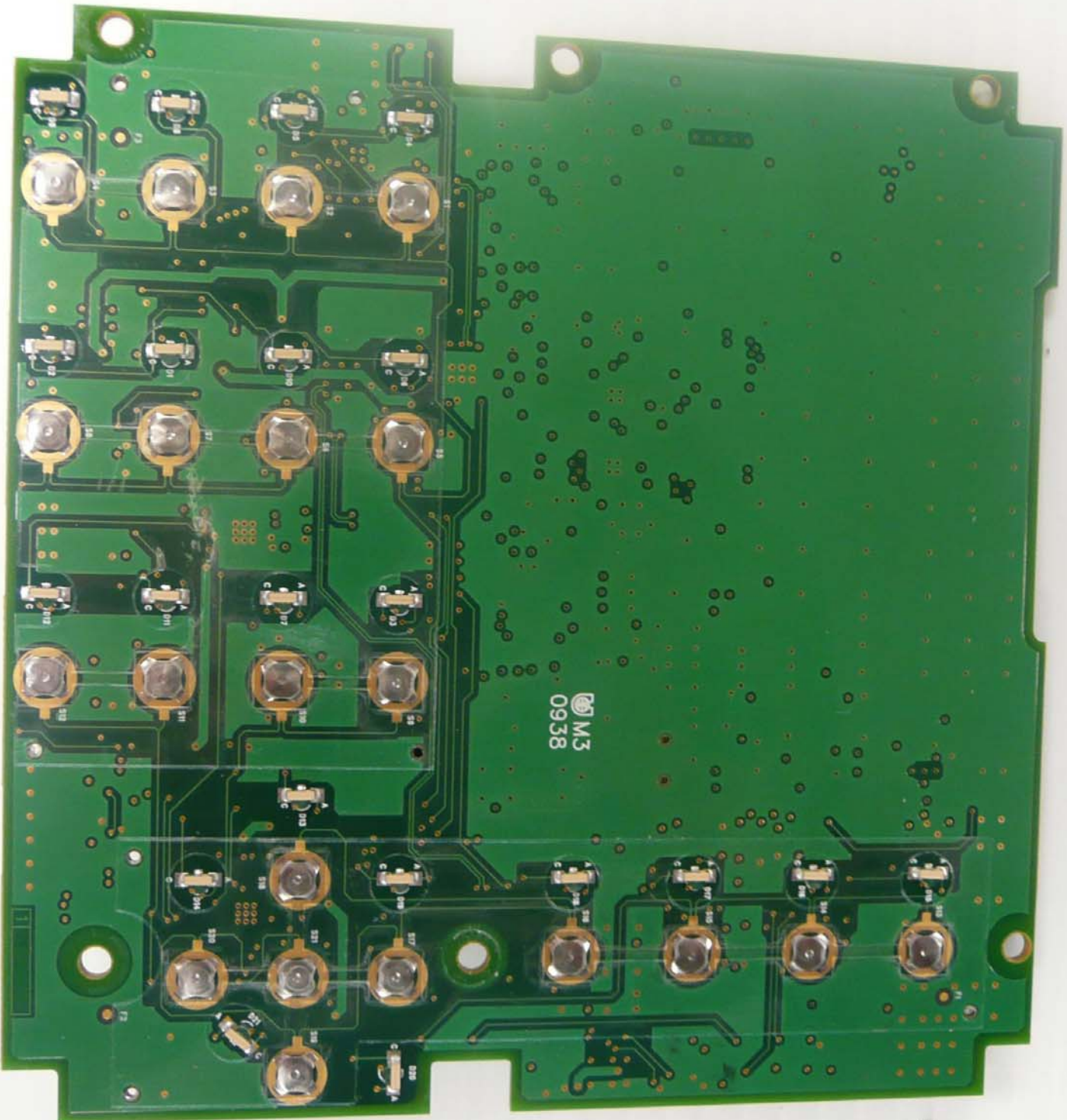




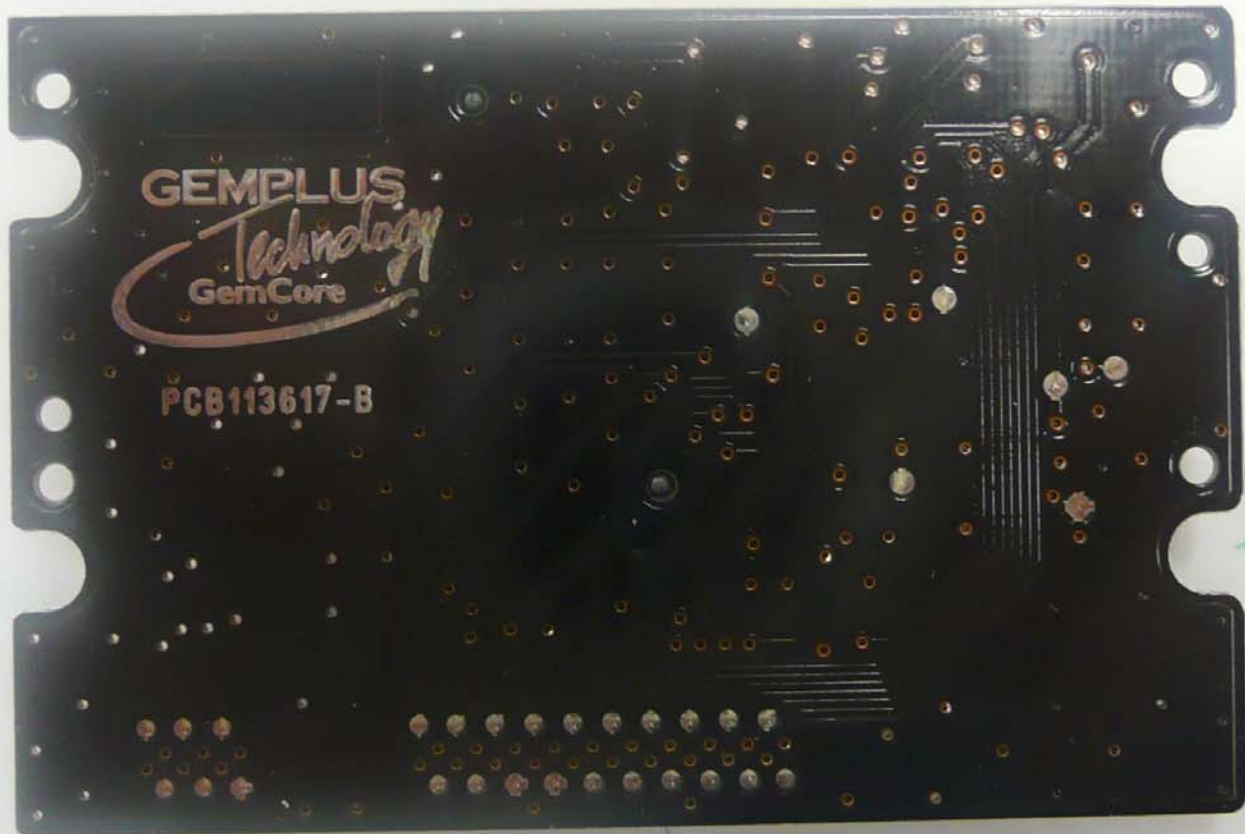


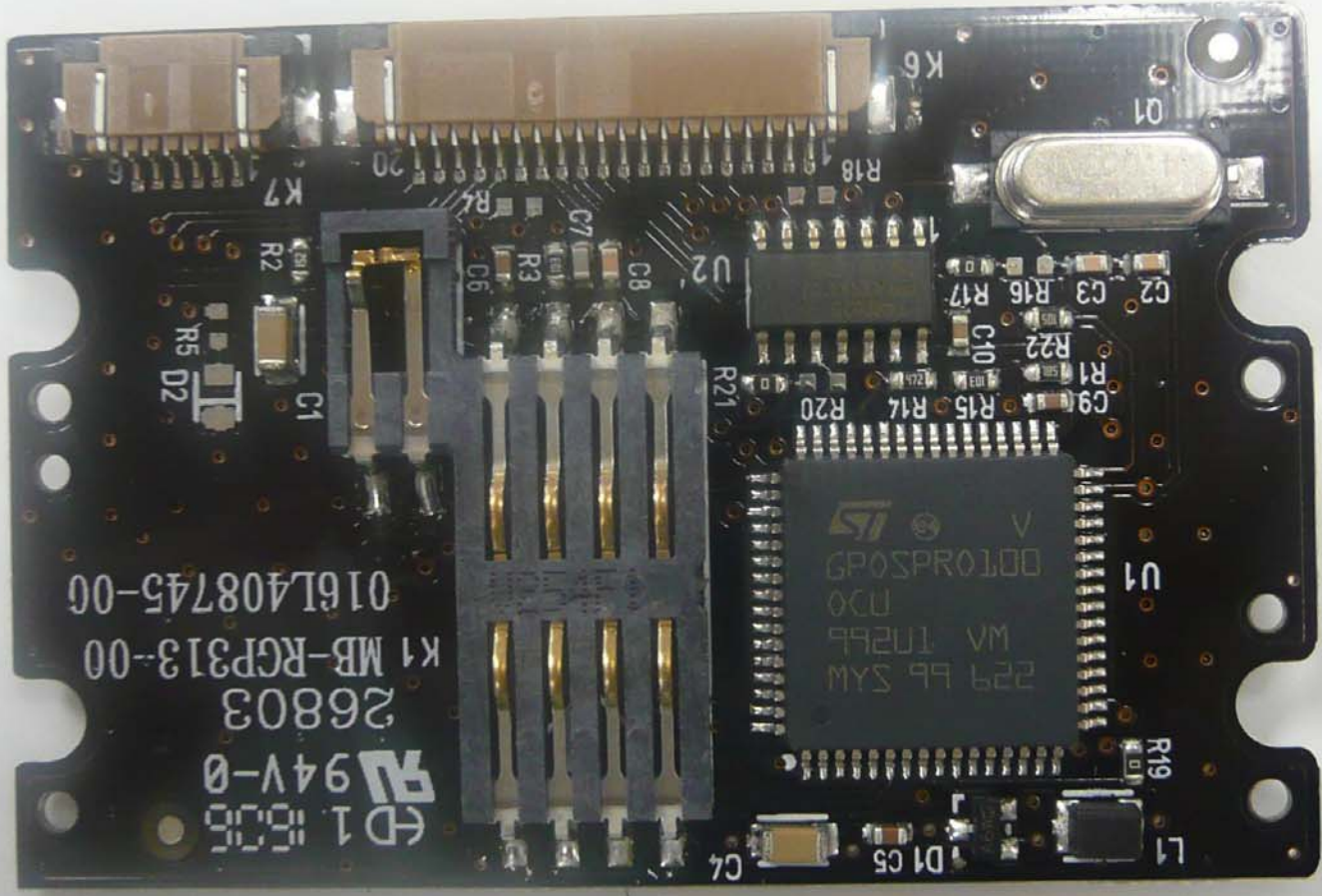
L-1 Identity Solutions
4G_Extreme_LCD_Keypad Rev2
P/N: 811-00149-02R



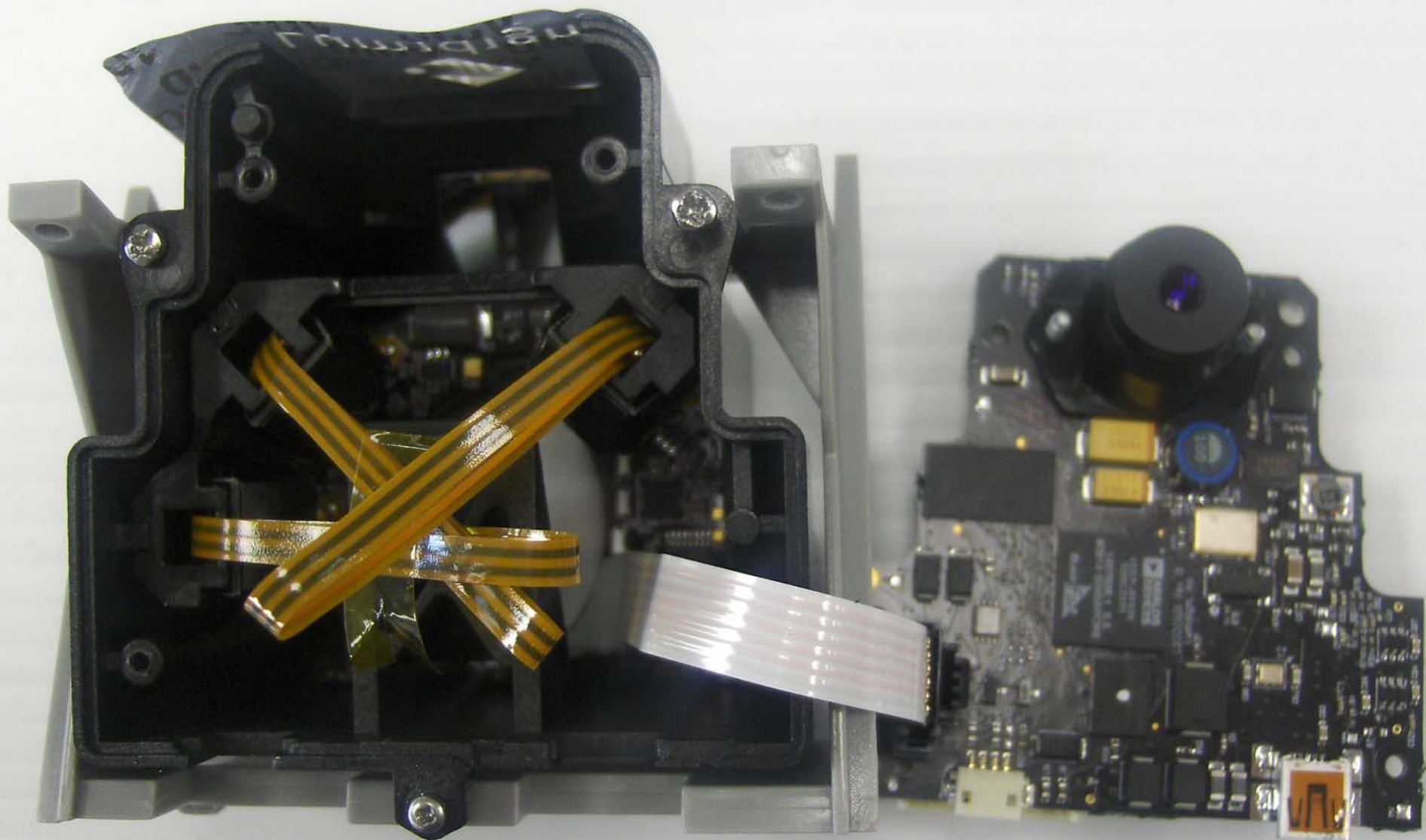


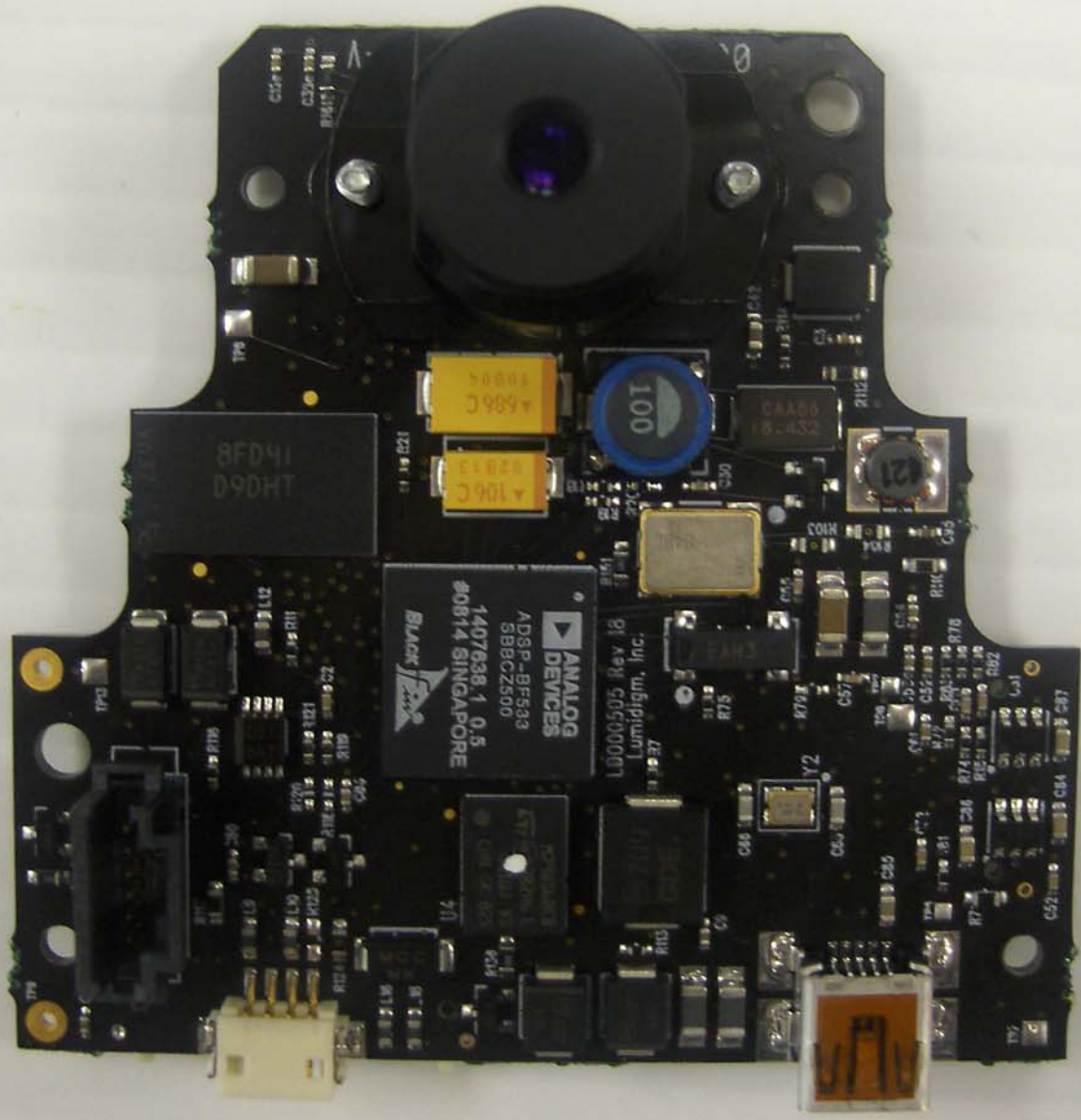
M3
0938





ED 1 806
94V-0
26803
K1 MB-RGP313-00
016L408745-00





C124 100
C126 100
R145 100

A 100C
A 100C

100

8FD41
D9DHT

ANALOG
DEVICES
ADSP-BF583
1407638-1 0.5
#0814 SINGAPORE

LD000505 Rev 18
Lumidigm, Inc.

CR456
18-432

12

D10

121

122

123

124

125

126

127

128

129

130

131

132

133

134

135

136

137

138

139

140

141

142

143

144

145

146

147

148

149

150

151

152

153

154

155

156

157

158

159

160

161

162

163

164

165

166

167

168

169

170

171

172

173

174

175

176

177

178

179

180

181

182

183

184

185

186

187

188

189

190

191

192

193

194

195

196

197

198

199

200

201

202

203

204

205

206

207

208

209

210

211

212

213

214

215

216

217

218

219

220

221

222

223

224

225

226

227

228

229

230

231

232

233

234

235

236

237

238

239

240

241

242

243

244

245

246

247

248

249

250

251

252

253

254

255

256

257

258

259

260

261

262

263

264

265

266

267

268

269

270

271

272

273

274

275

276

277

278

279

280

281

282

283

284

285

286

287

288

289

290

291

292

293

294

295

296

297

298

299

300

301

302

303

304

305

306

307

308

309

310

311

312

313

314

315

316

317

318

319

320

321

322

323

324

325

326

327

328

329

330

331

332

333

334

335

336

337

338

339

340

341

342

343

344

345

346

347

348

349

350

351

352

353

354

355

356

357

358

359

360

361

362

363

364

365

366

367

368

369

370

371

372

373

374

375

376

377

378

379

380

381

382

383

384

385

386

387

388

389

390

391

392

393

394

395

396

397

398

399

400

401

402

403

404

405

406

407

408

409

410

411

412

413

414

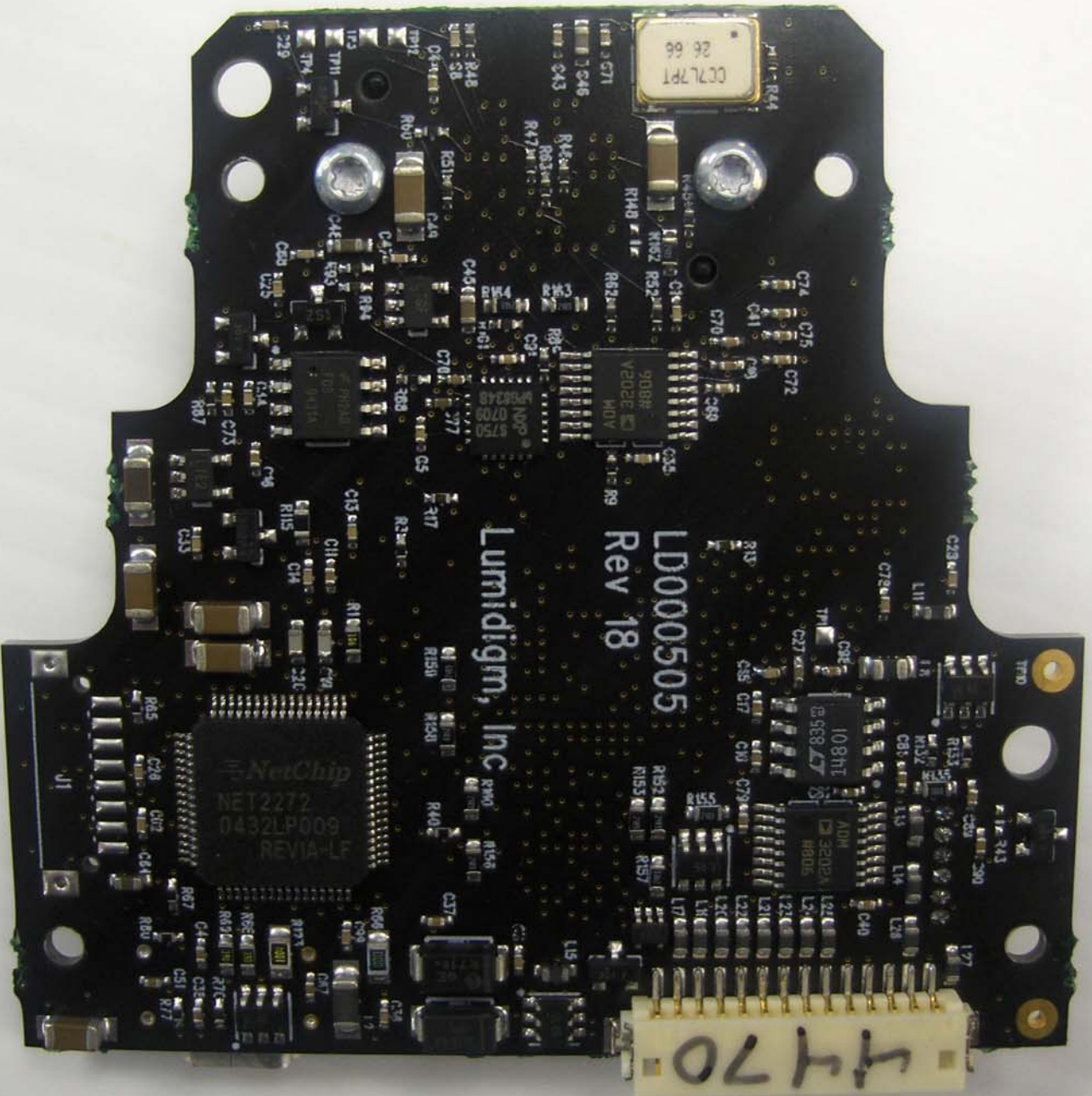
415

416

417

418

419



4470

LD000505
Rev 18

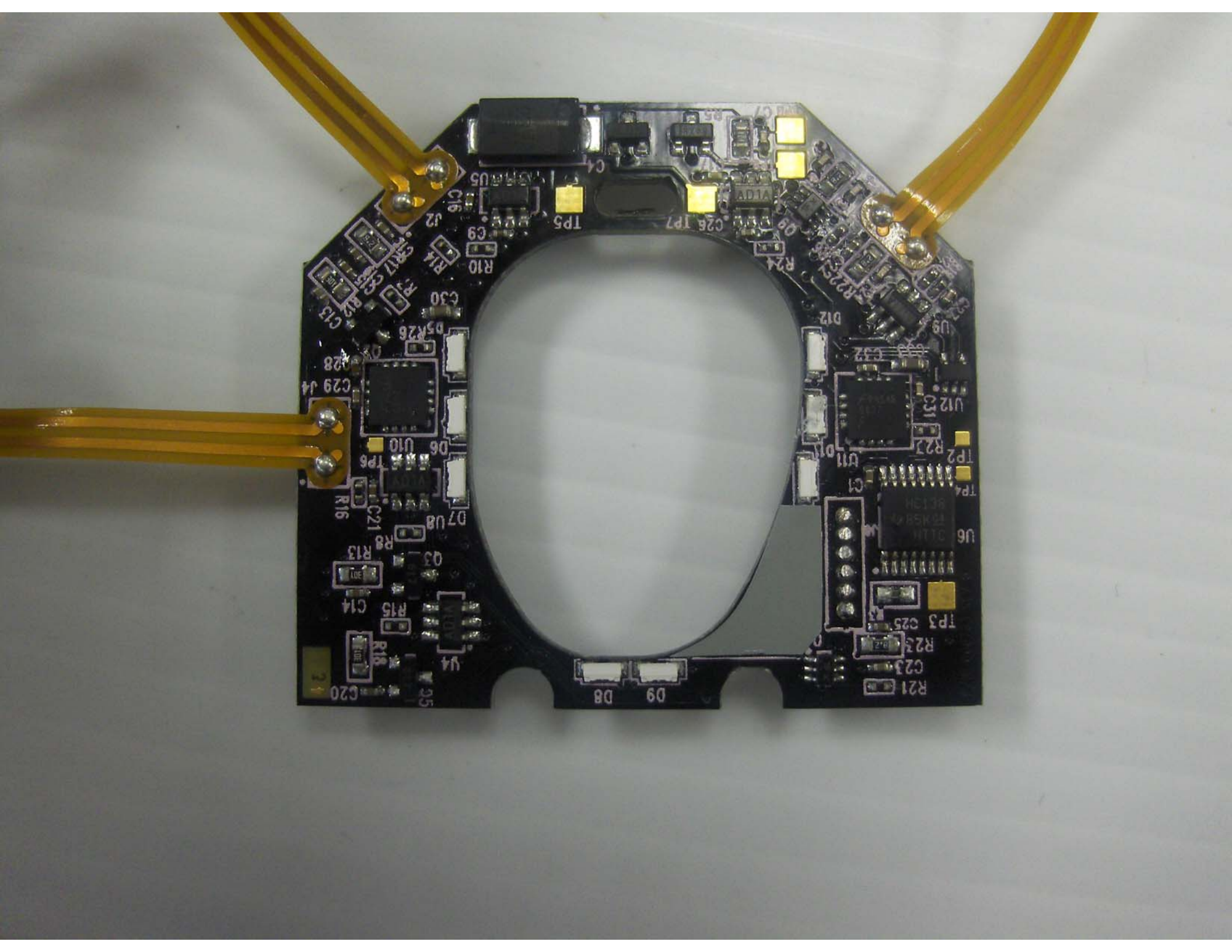
Lumidigm, Inc

NetChip
NET2272
0432LP009
REVIA-LF

108H1
ADM
8982A
10805

9088
VED02E
M0V

CC7L7P1
26 66





C1
C2
C5
C6

S/N:



D3A1

D4A1

REV B



000763
E218213

94V-0

ASSY NO: 000763

RoHS TP1

D2A1



D1A1



C8
C10
R9

TIR BOARD