

PK-12N40P0

M

X-Ray  
OK

MB - LCD CON

LED CON

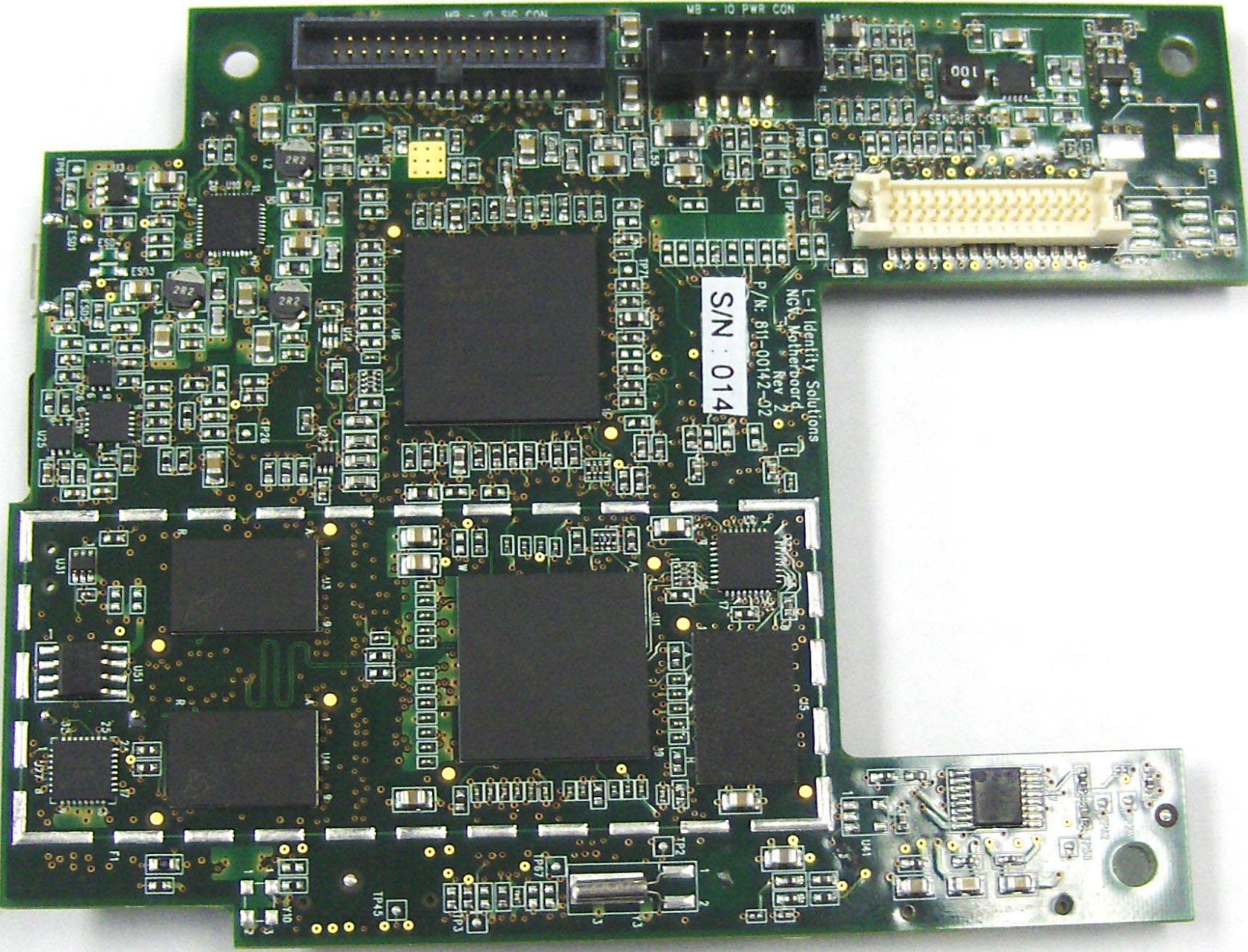
MK/Yr  
0609  
TP86

HL  
94V-0  
R16

S-C READER  
CON

CE2

USB CON



Identify Solutions  
NCV Motherboard  
Rev 2  
P/N: 811-00142-02  
S/N: 014

MB - P. SIO CON

MB - IO PWR CON

100

ES03

2R2

2R2

U26

U27

U28

U29

U30

U31

U32

U33

U34

U35

U36

U37

U38

U39

U40

U41

U42

U43

U44

U45

U46

U47

U48

F1

F2

F3

F4

F5

F6

F7

F8

F9

F10

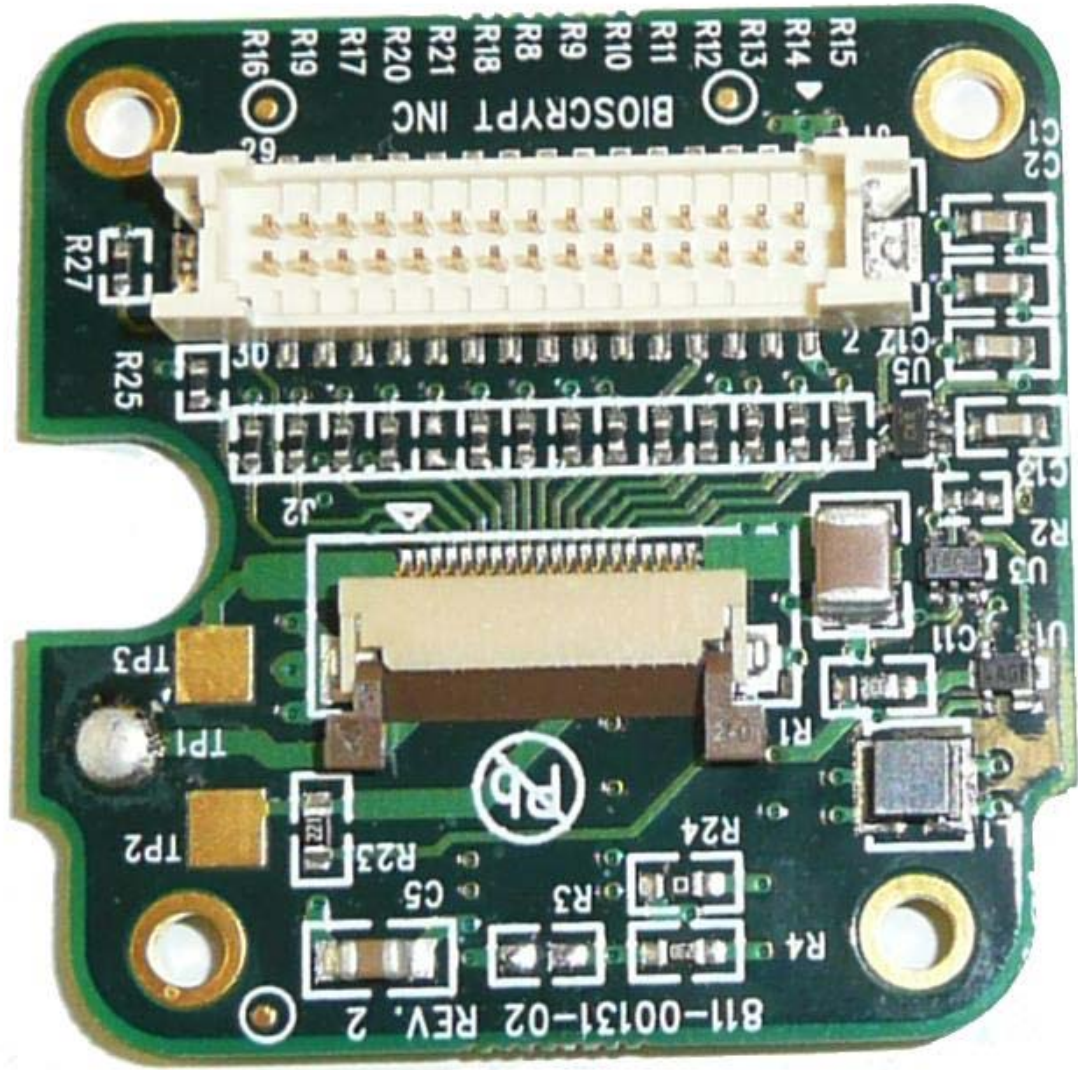
F11

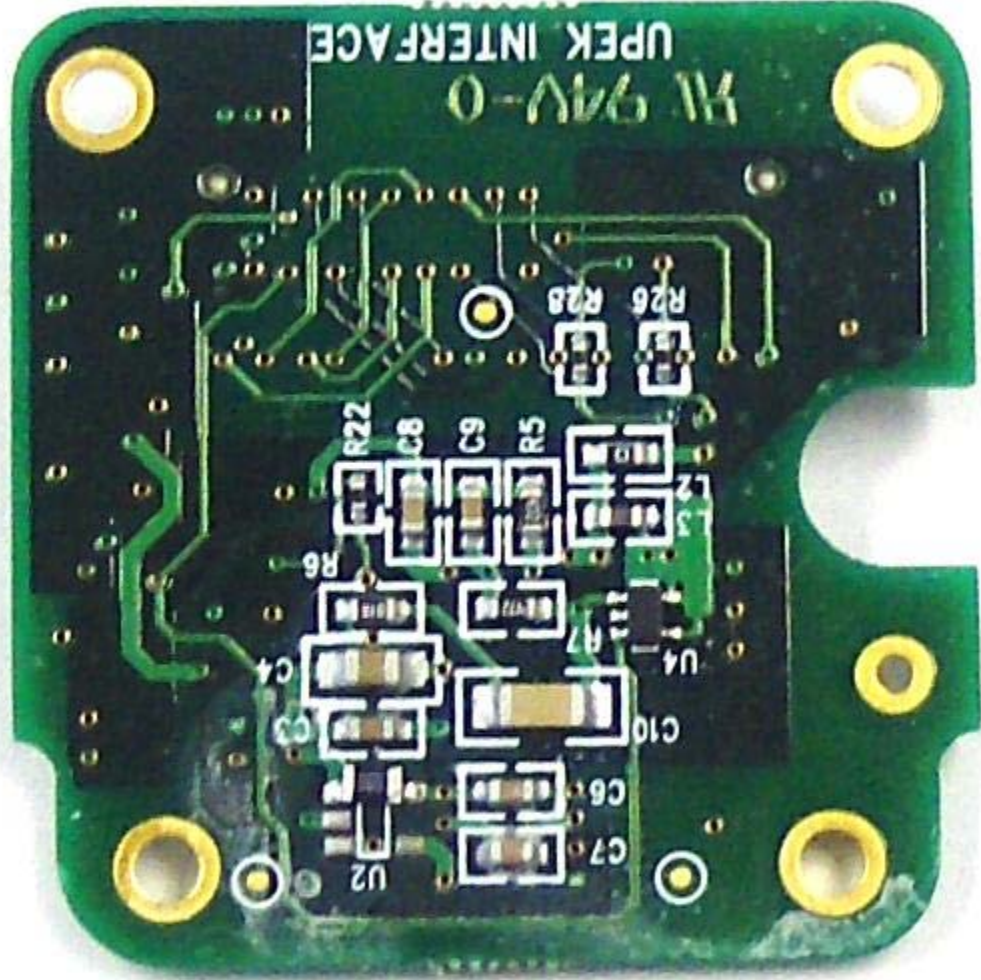
F12

F13

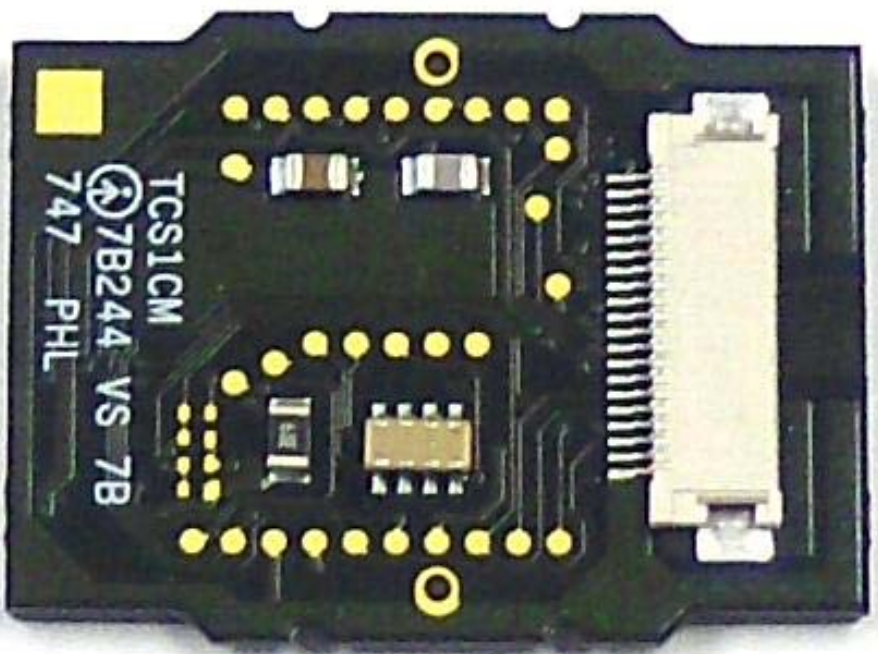
F14

F15

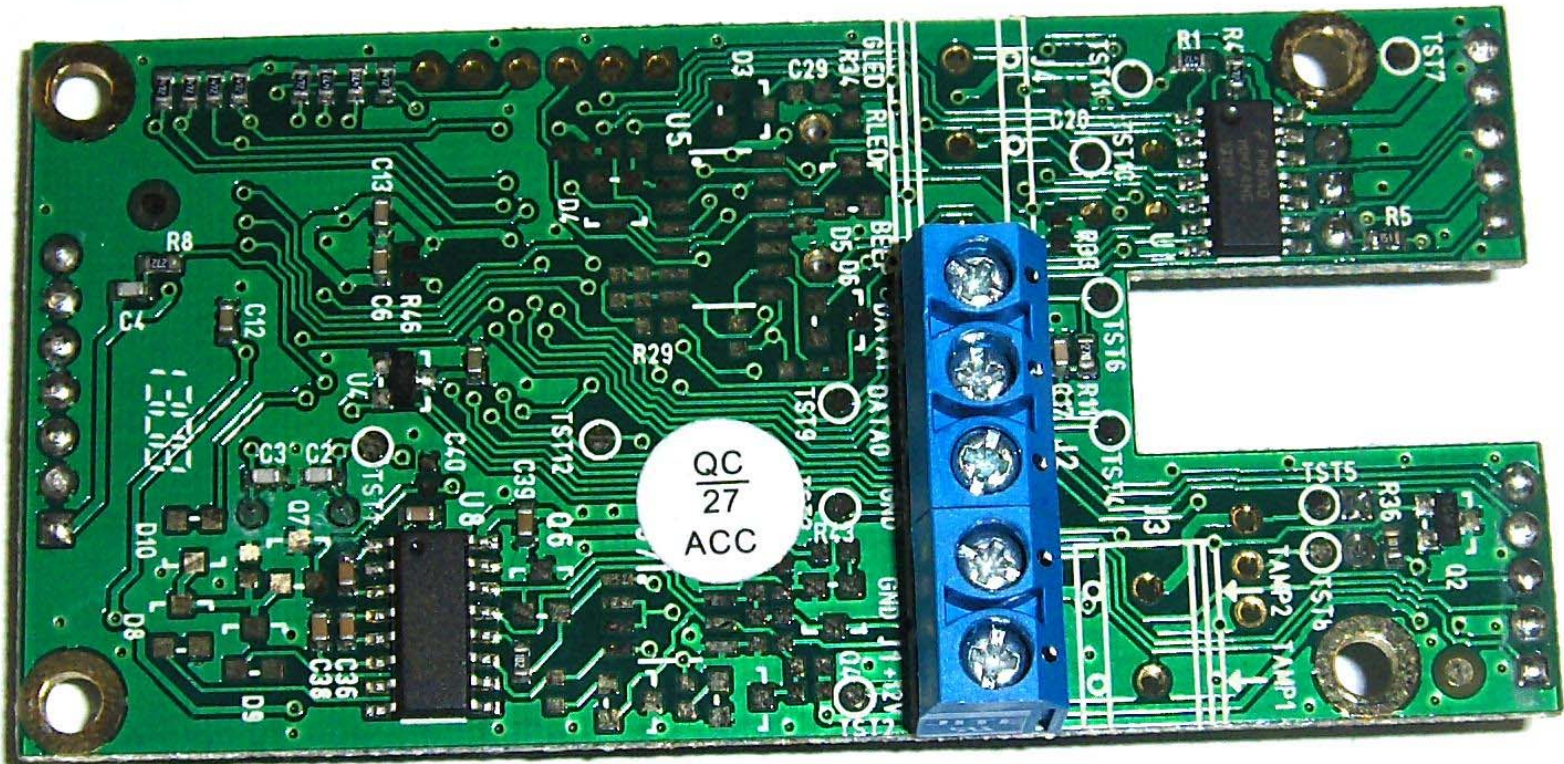




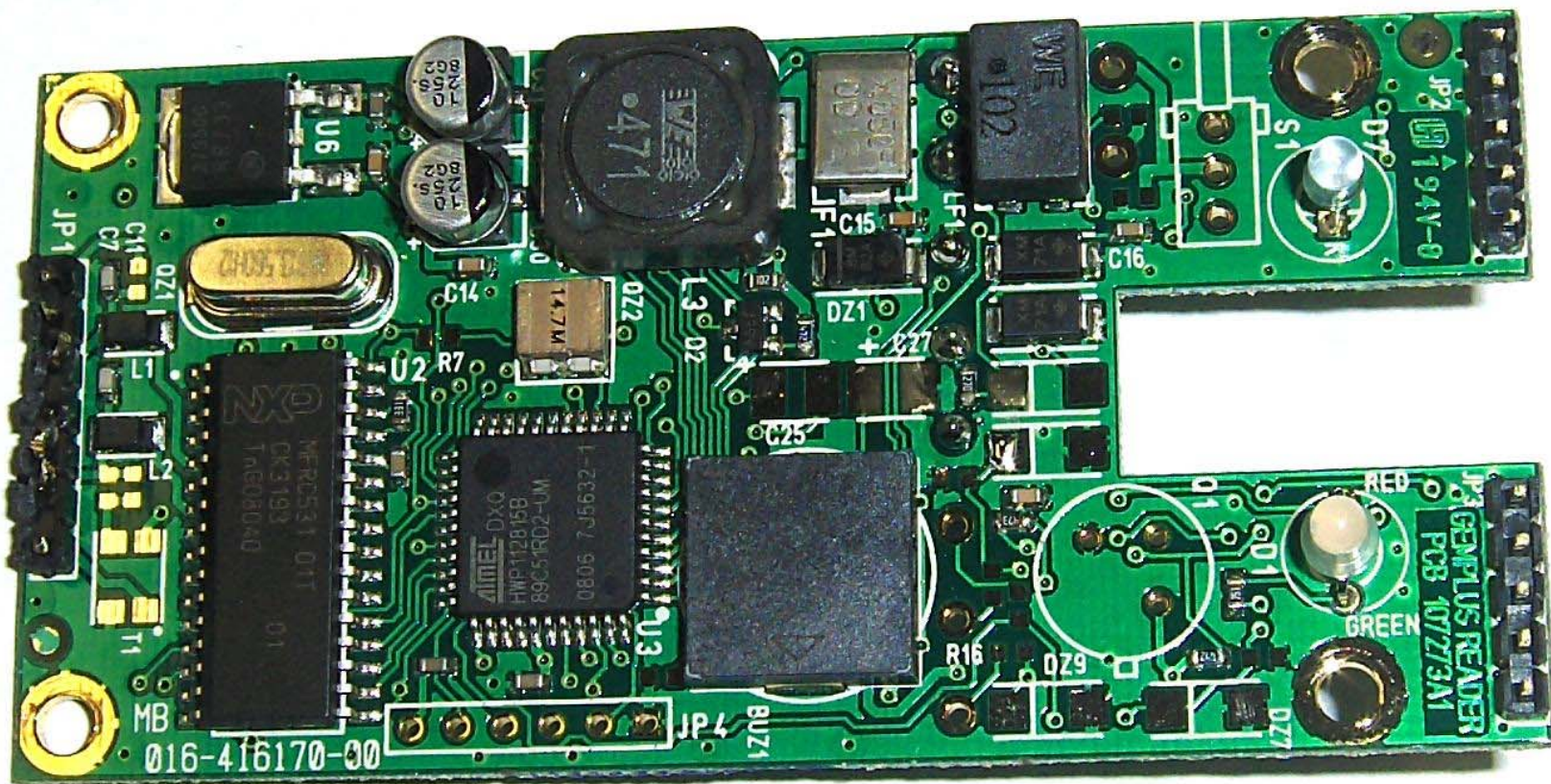




TCS1CM  
7B244 VS 7B  
747 PHL







MB  
016-416170-00

MFR531 01T  
OK3193  
1n608040  
01

AMTEL Dxo  
HWP12815B  
89051R02-LIM  
0805 7J5632-1

820  
GND  
20  
820  
GND  
20

471

102

194V-0

GENPLUS READER  
PCB 107273M1

RED  
GREEN

BUZ1

JP4

D7

D7

D7

C16

DZ1

C25

L3

OZ2

147M

C14

R7

U2

U6

T1

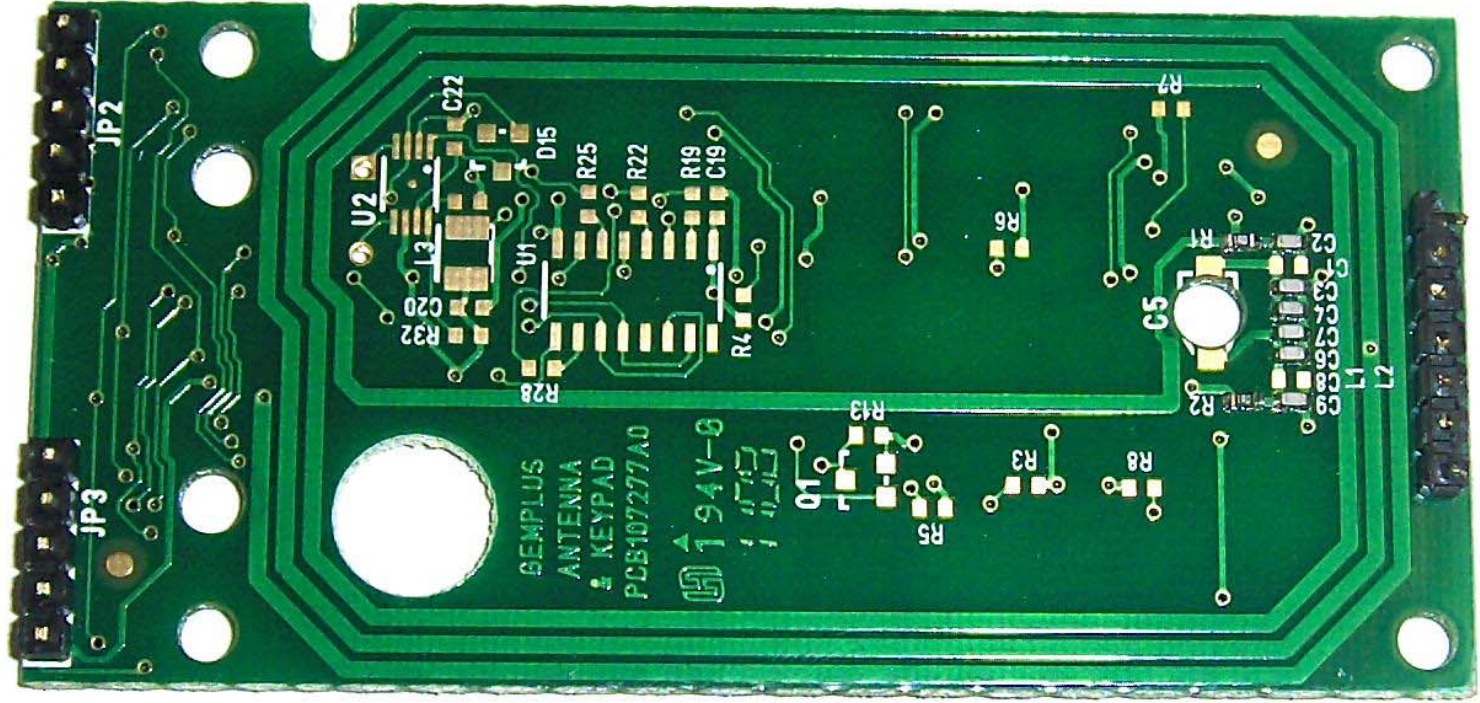
L2

L1

C7

OZ1

JP1



SEMPLUS  
ANTENNA  
# KEYPAD  
PCB107277A0

94V-6  
1 11 13

JP3

JP2

U2

C22

D15

R25

R22

R19

C19

R32

C20

U1

R28

R4

R13

R3

R8

R5

R2

R1

C5

C2

C3

C7

C6

C8

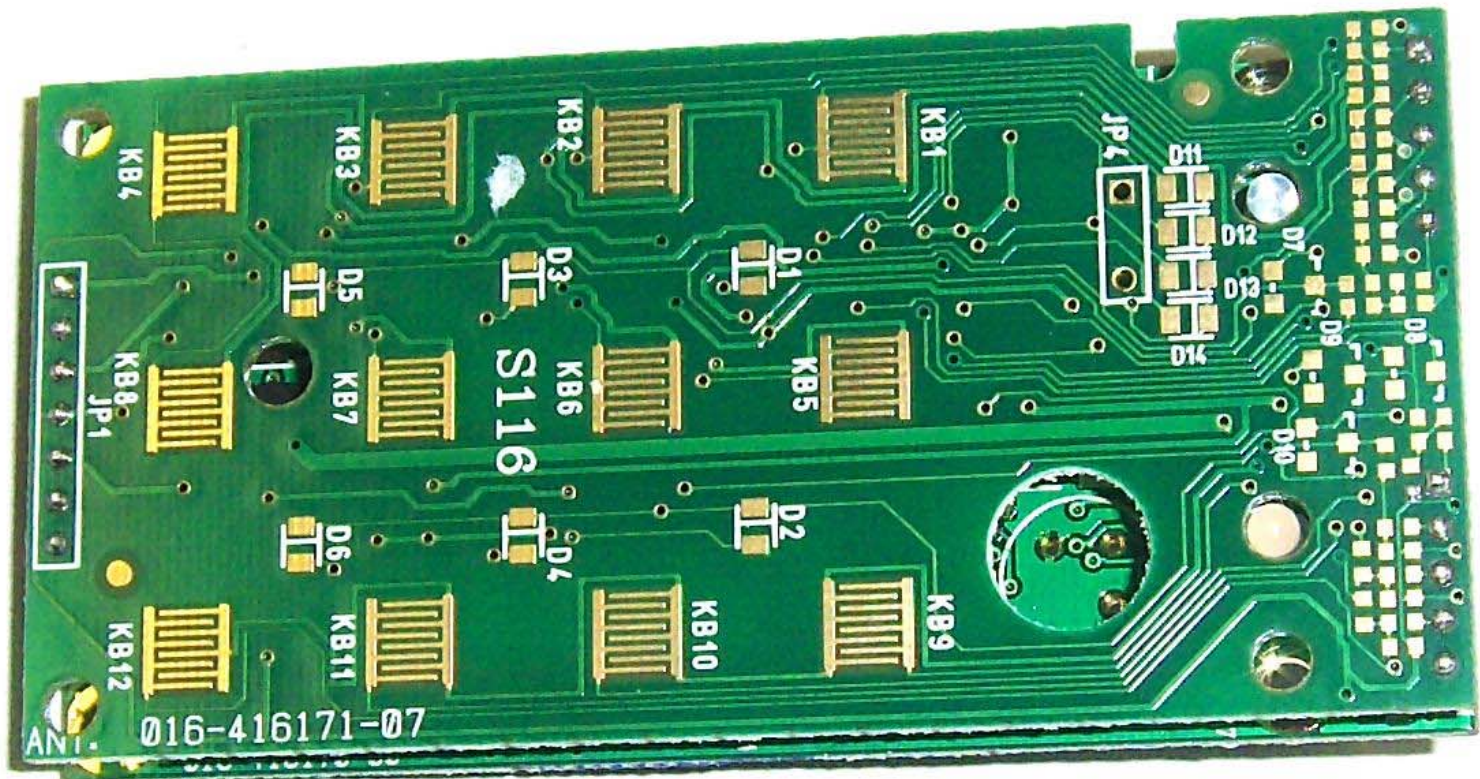
C9

L1

L2

R6

R7



GEMPLUS  
*Technology*  
GemCore

PCB113617-8





GEMPLUS™



M/N : POS Smart Connector

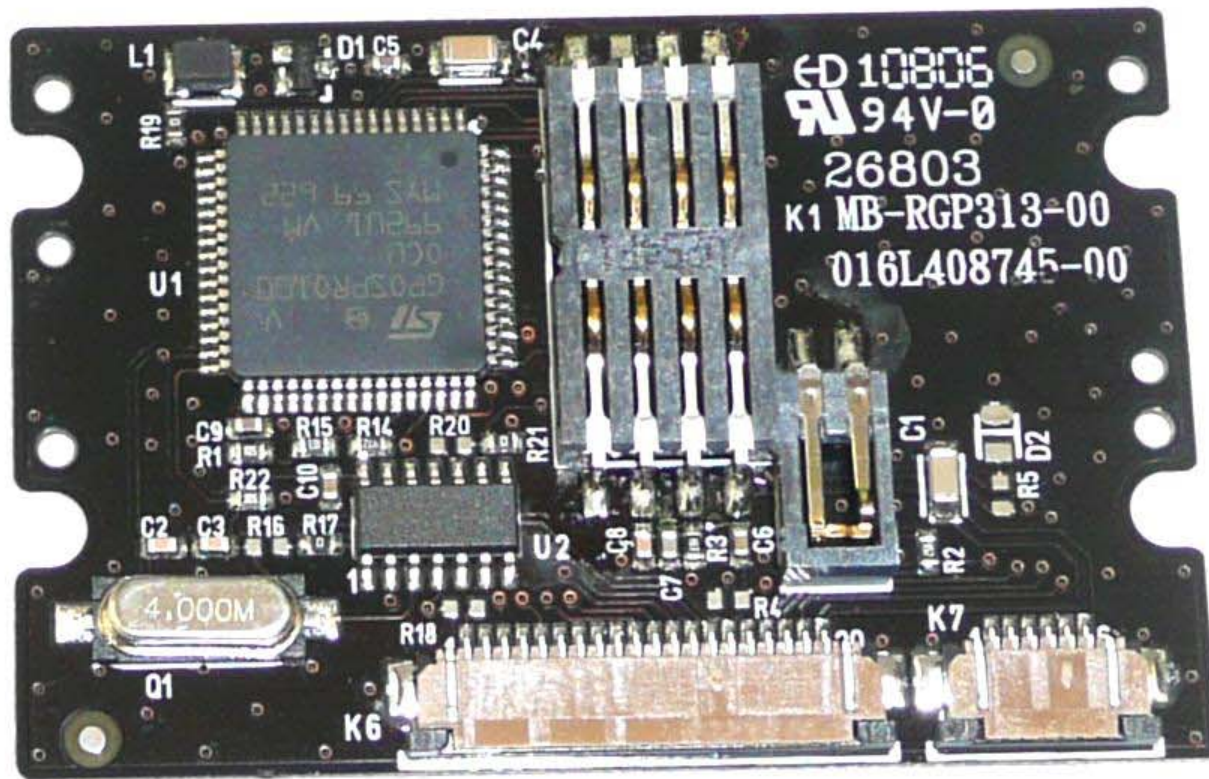
P/N : HWP113844A

S/N : R0662019800033

ENGINEERING SAMPLE



MADE IN CHINA



10805  
94V-0  
26803  
K1 MB-RGP313-00  
016L408745-00

L1 D1 C5 C4

R19

U1

C9 R1

C2 C3

O1

R15

R14

R20

R22

C10

R16

R17

K6

R21

U2

R18

C8

R3

C7

R4

R20

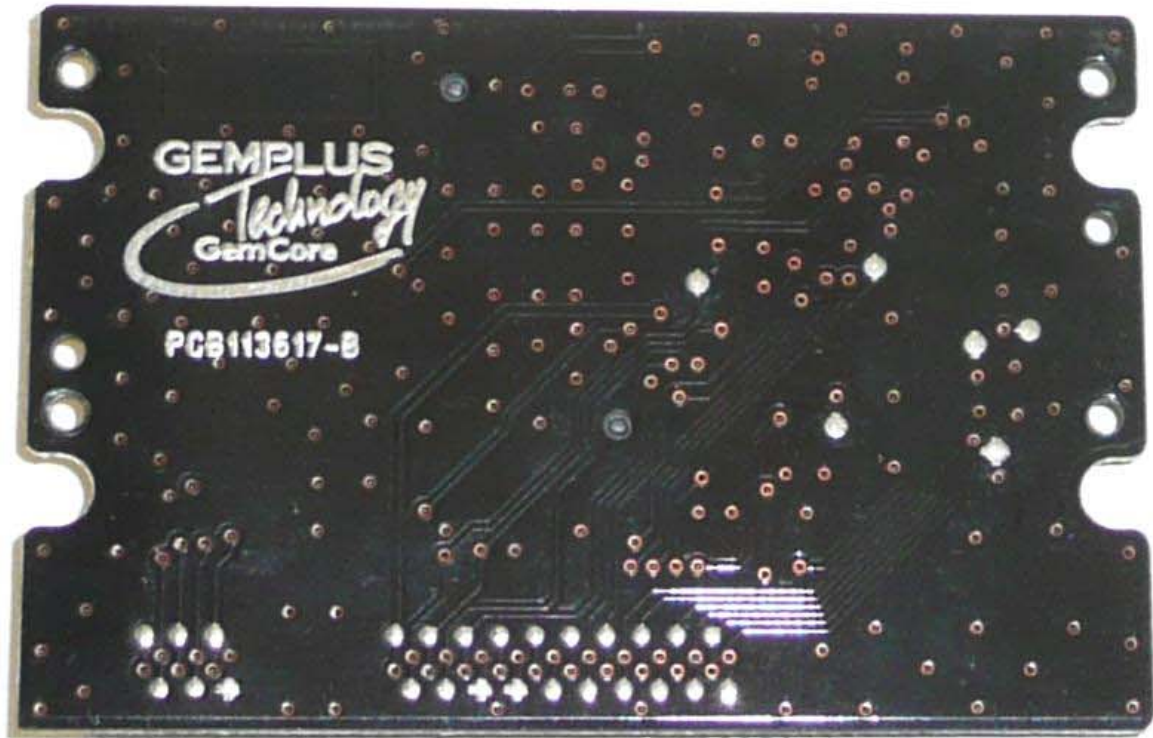
C1

R2

K7

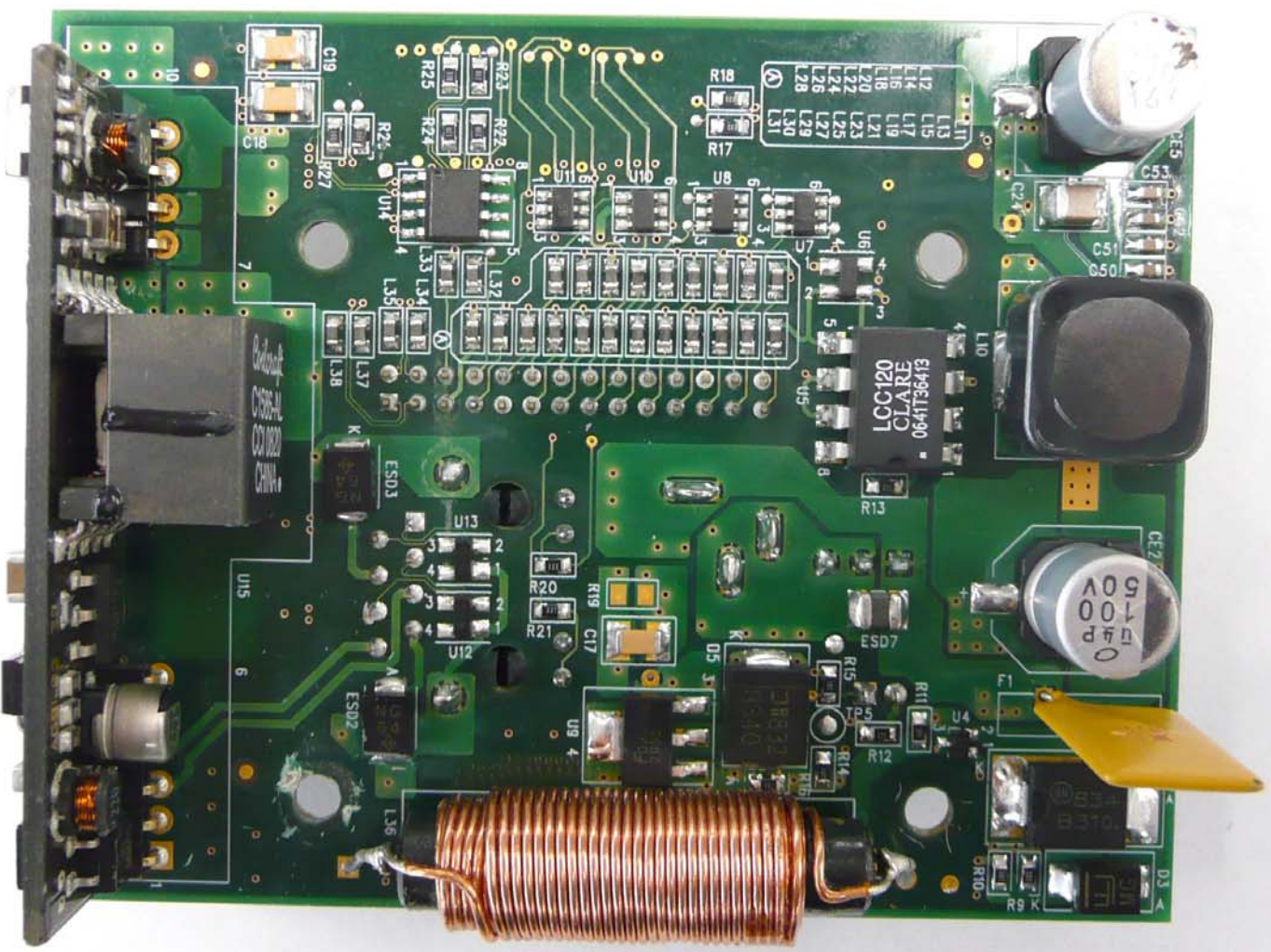
R5

D2



GEMPLUS  
*Technology*  
GemCore

PCB113617-B



C27  
50V  
100  
0  
TAP

LCC120  
CLARE  
0641T36413

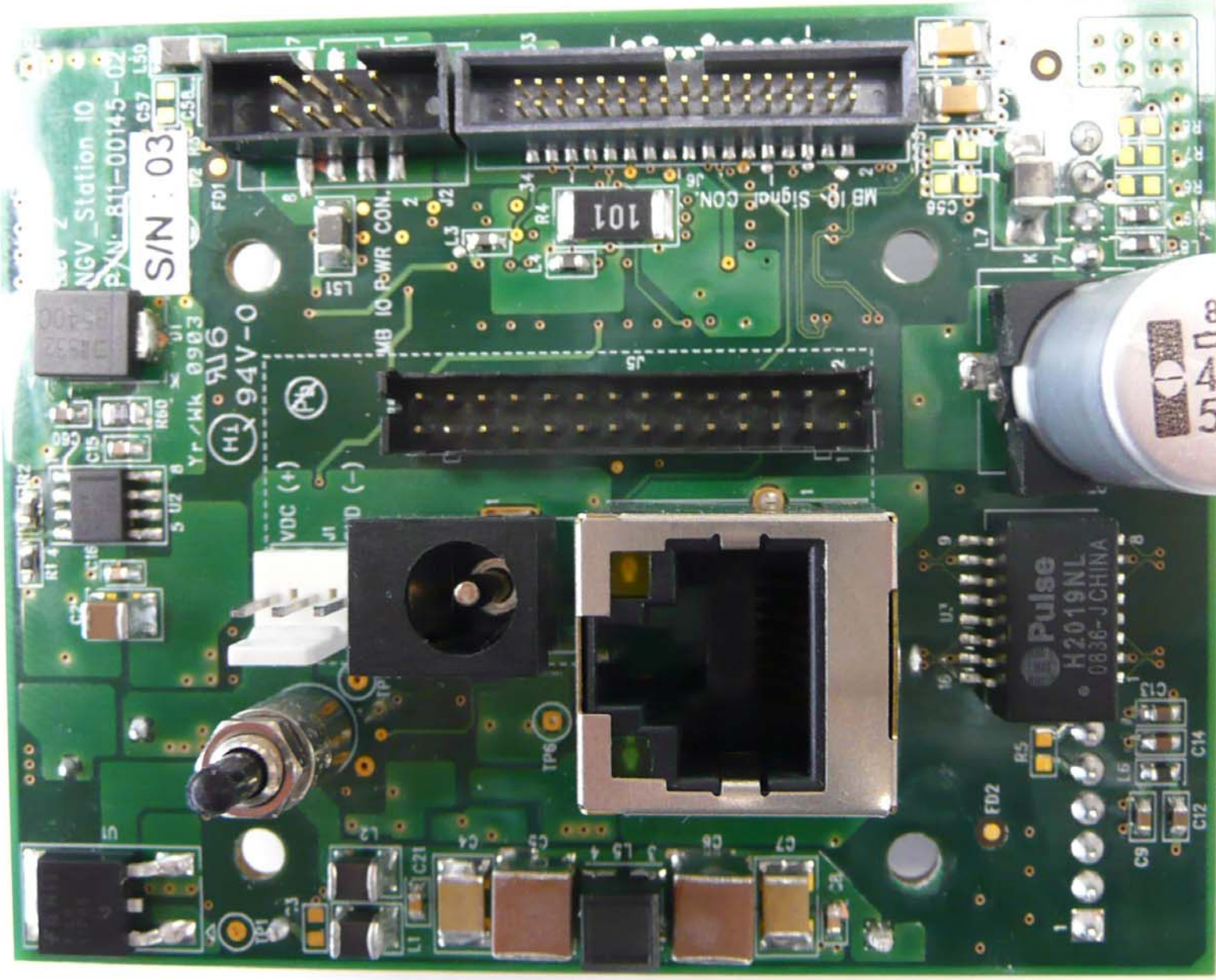
L12 L13  
L14 L15  
L16 L17  
L18 L19  
L20 L21  
L22 L23  
L24 L25  
L26 L27  
L28 L29  
L30 L31

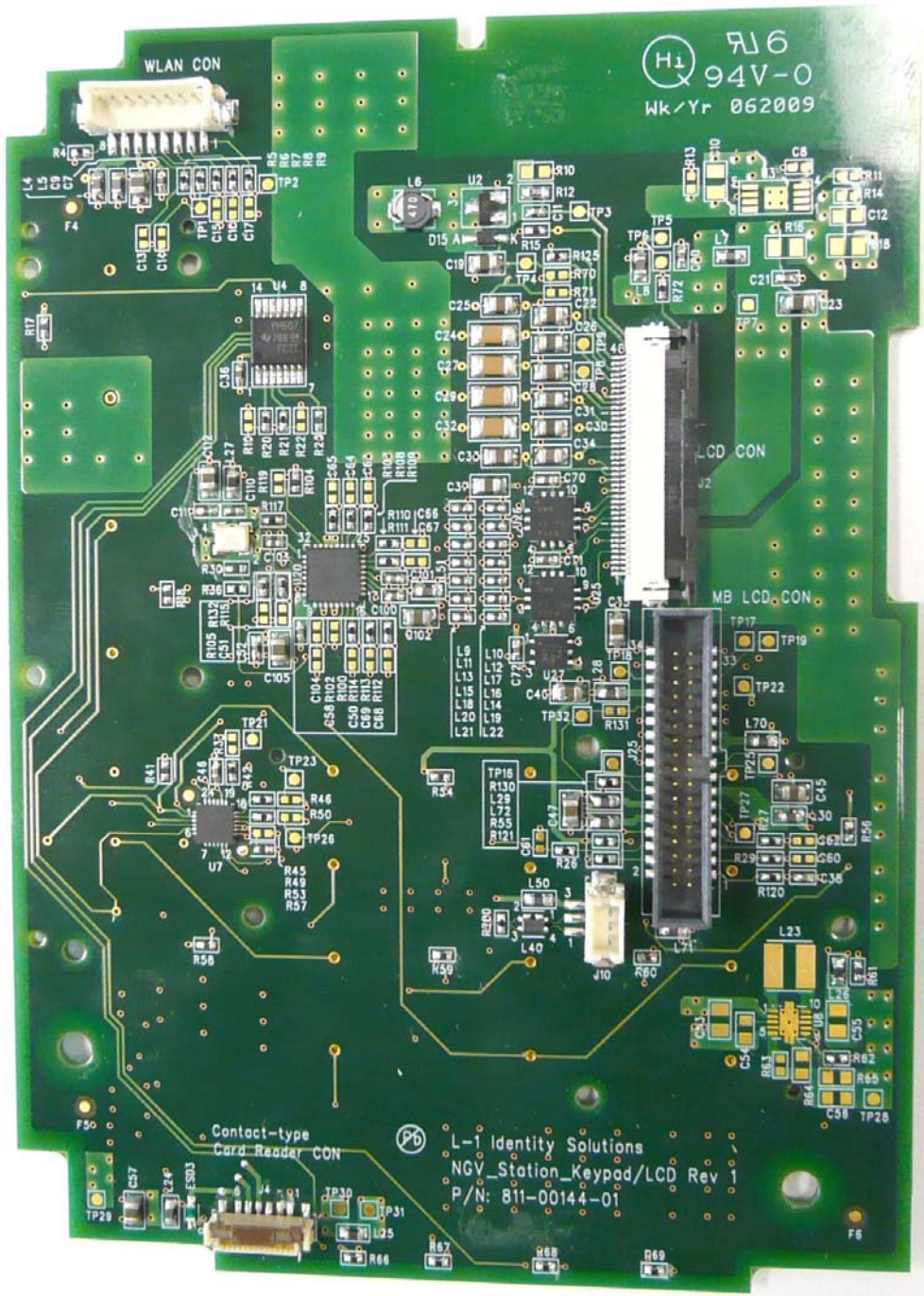
CS16-L  
C01020  
CHINA

2832  
0640

B310







H1 R16  
94V-0  
Wk/Yr 062009

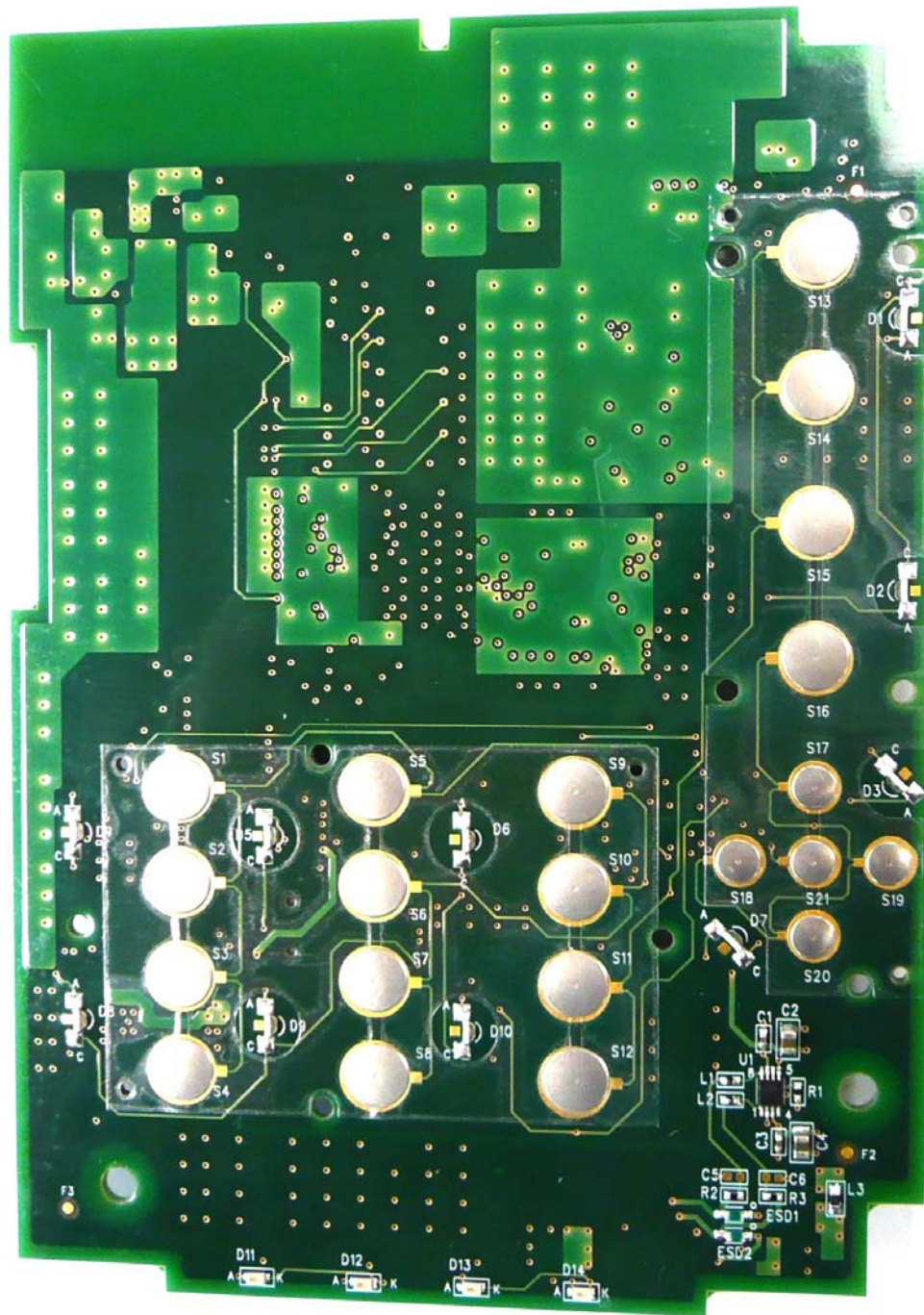
WLAN CON

LCD CON

MB LCD CON

Contact-type  
Card Reader CON

P6 L-1 Identity Solutions  
NGV\_Station\_Keypad/LCD Rev 1  
P/N: 811-00144-01





**Laird**  
TECHNOLOGIES®

MULTIBAND

PROTECTED BY US PATENT : 6,943,734

MAP24057

