

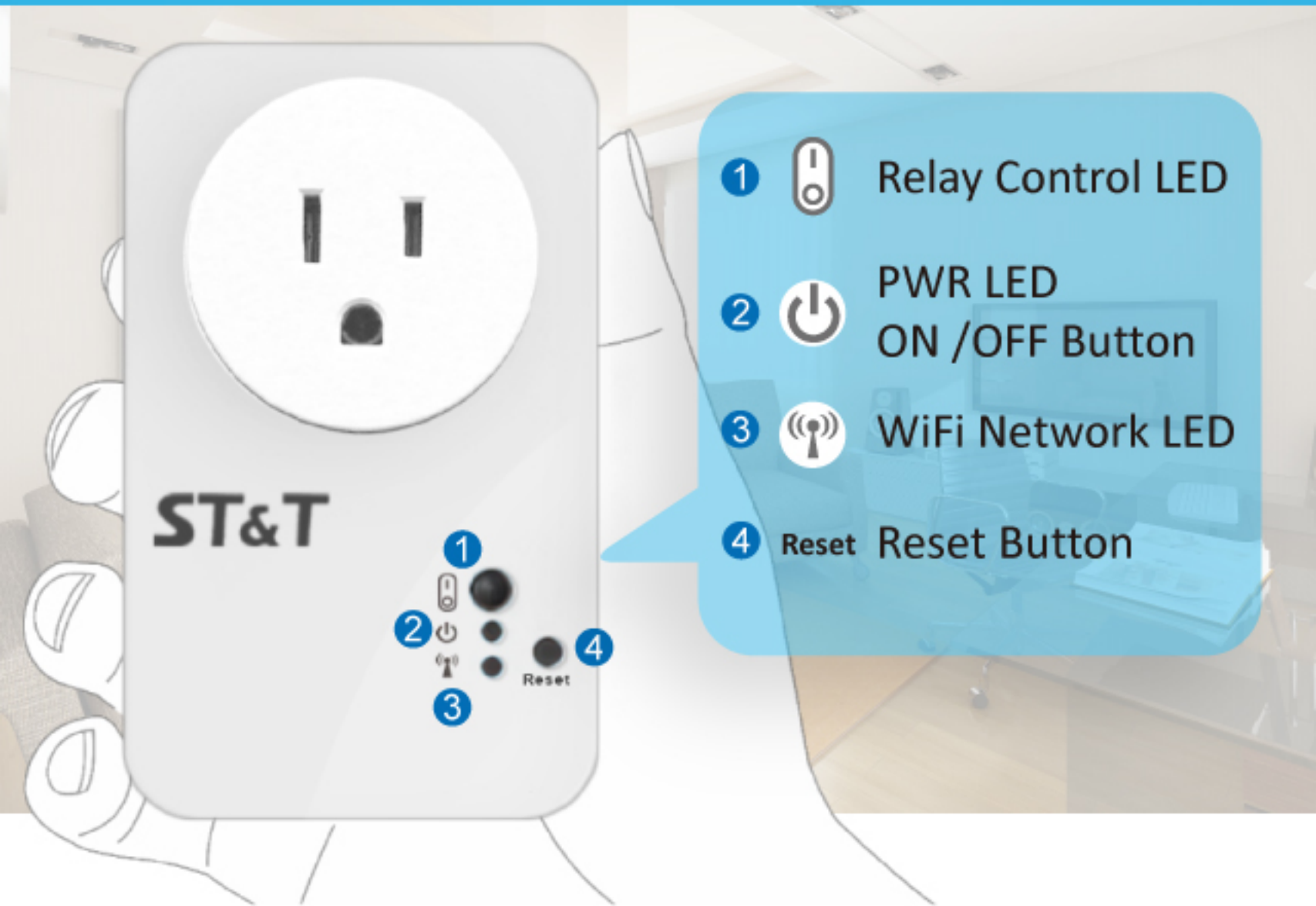


# Welcome


## How to use your SmartPlug And enjoy your SmartHome




# Product



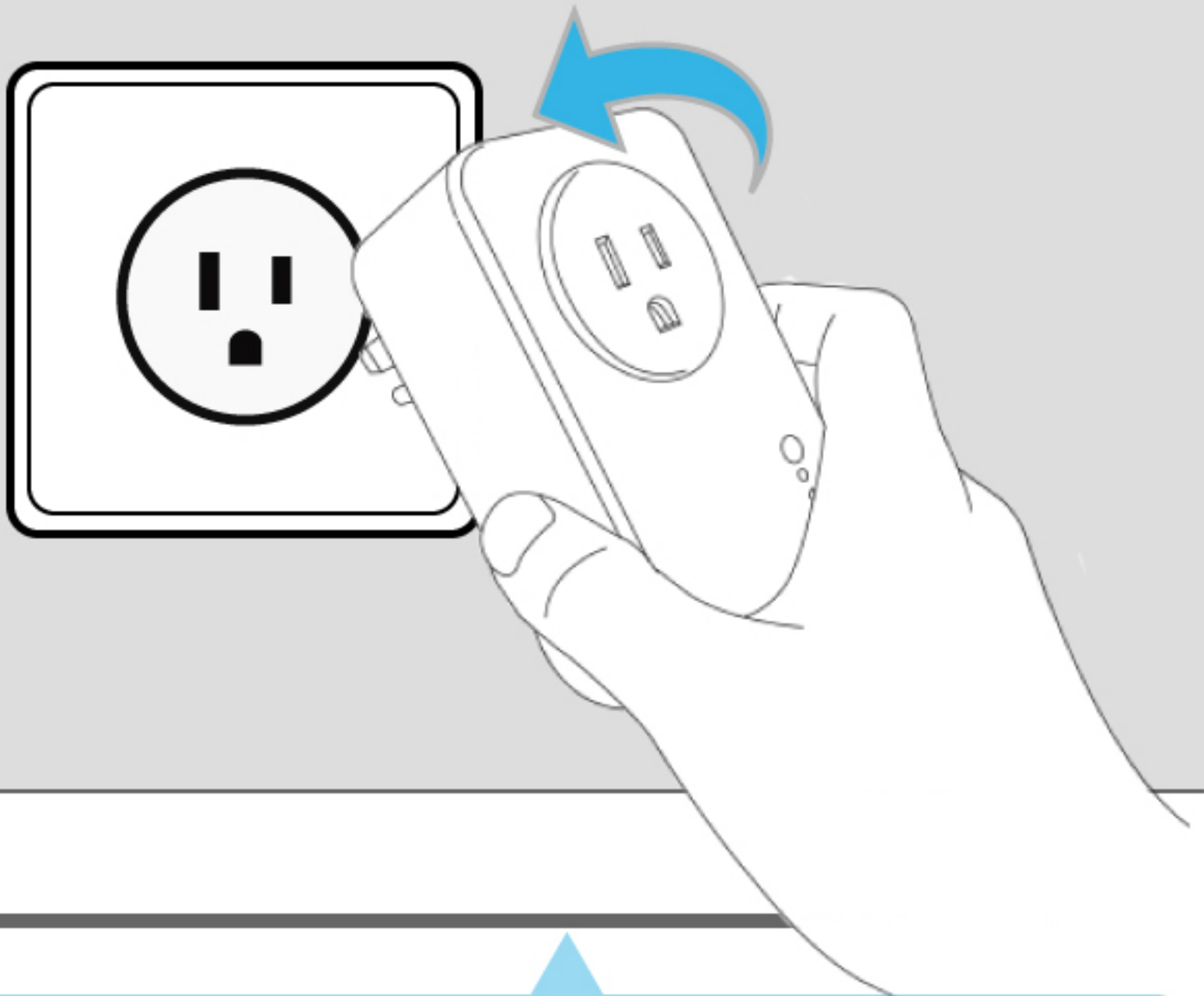
 ( RLY ) On: Relay On (SmartPlug output power socket is on.)  
Off: Relay Off (SmartPlug output power socket is off.)

 ( PWR ) On: Power on (SmartPlug is powered on)  
Off: Power off (SmartPlug is Power off)

 ( WiFi ) Blinking: WiFi AP is read  
Off: WiFi AP is not ready  
On: WPS function is active

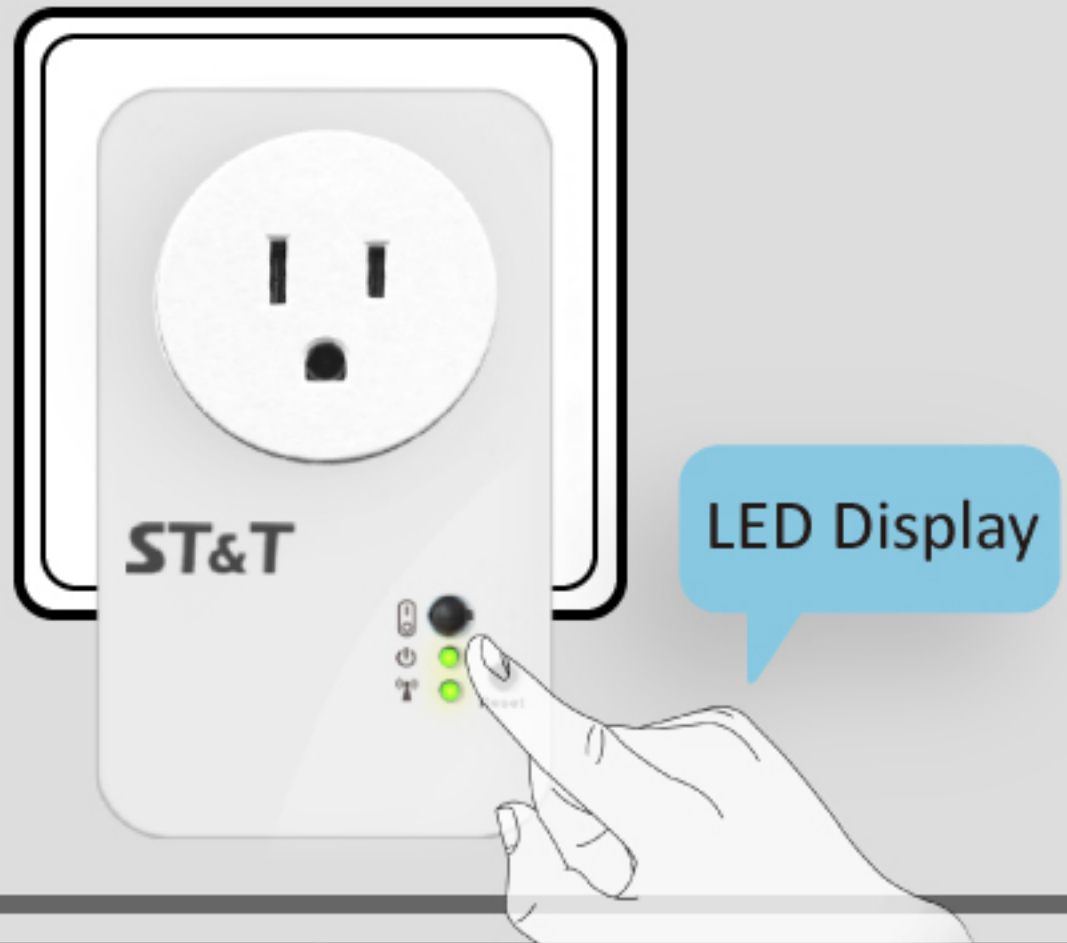
Reset Button : Keep pressing for 10-12 secs , SmartPlug will be reset to factory default mode.

# SmartPlug Installation



Please SmartPlug into a power outlet





# SmartPlug Status







## Waiting status lights ready

### LED indication-

#### Sequence 1 Power on status

-   Device: ON/Green, OFF/blank
-   WiFi LED: Orange

#### Sequence 2 WiFi on status

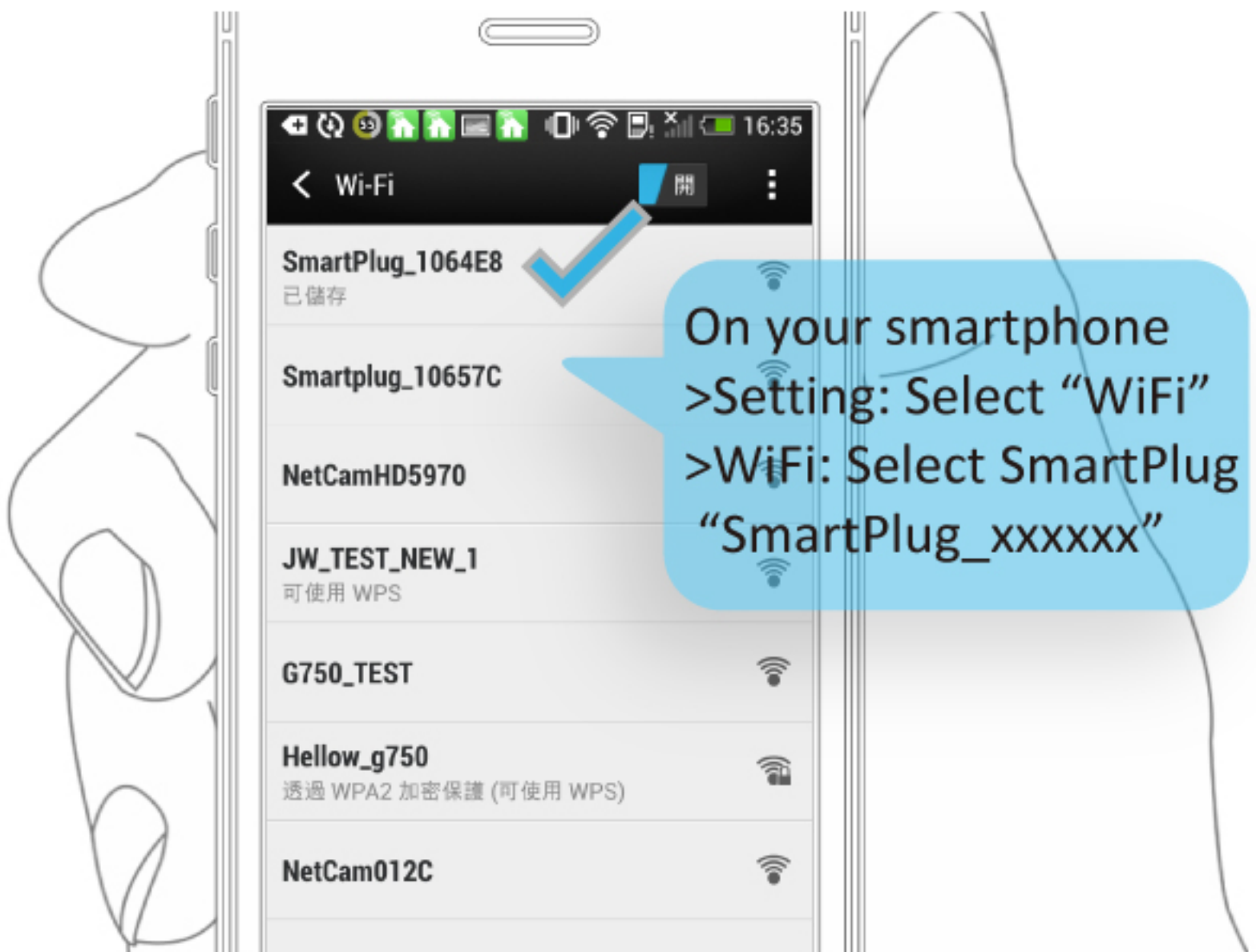
-   Device: ON/Green
-   WiFi LED: ON/Green (5~8 sec)

#### Sequence 3 WiFi searching

-   Device: ON/Green
-   WiFi: Blinking/Green

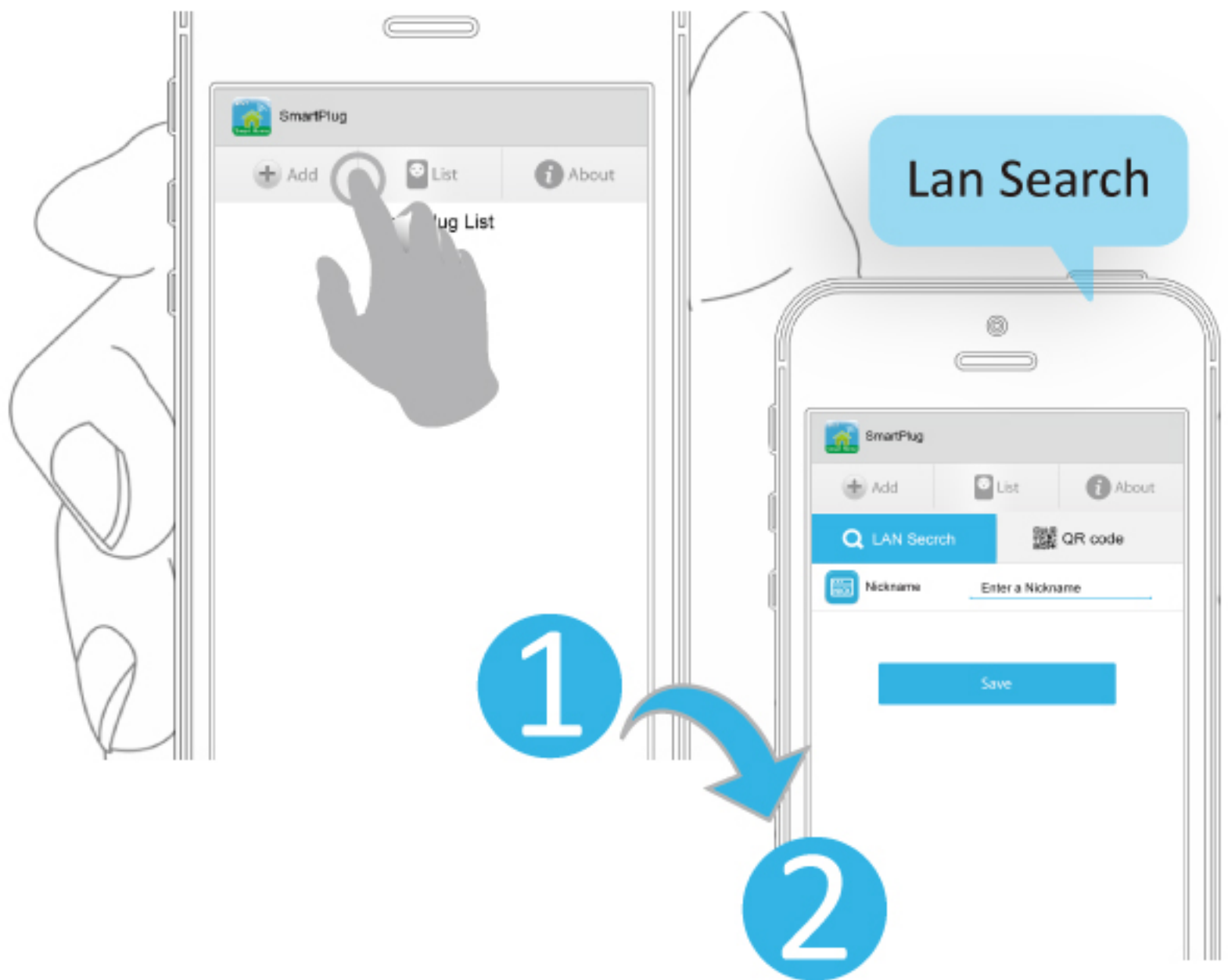


# SmartPhone WiFi Setting



Enter the setting of your SmartPhone -- > Activate WiFi .  
It will pop up the surrounding WiFi devices under the coverage of SmartPhone's Network.  
Please search for the device named " Smartplug\_xxxxxx " ( " xxxxxx " is the last 6 digital numbers of Smartplug's Mac address. Please link with the device name carrying the same 6-digit Mac address.

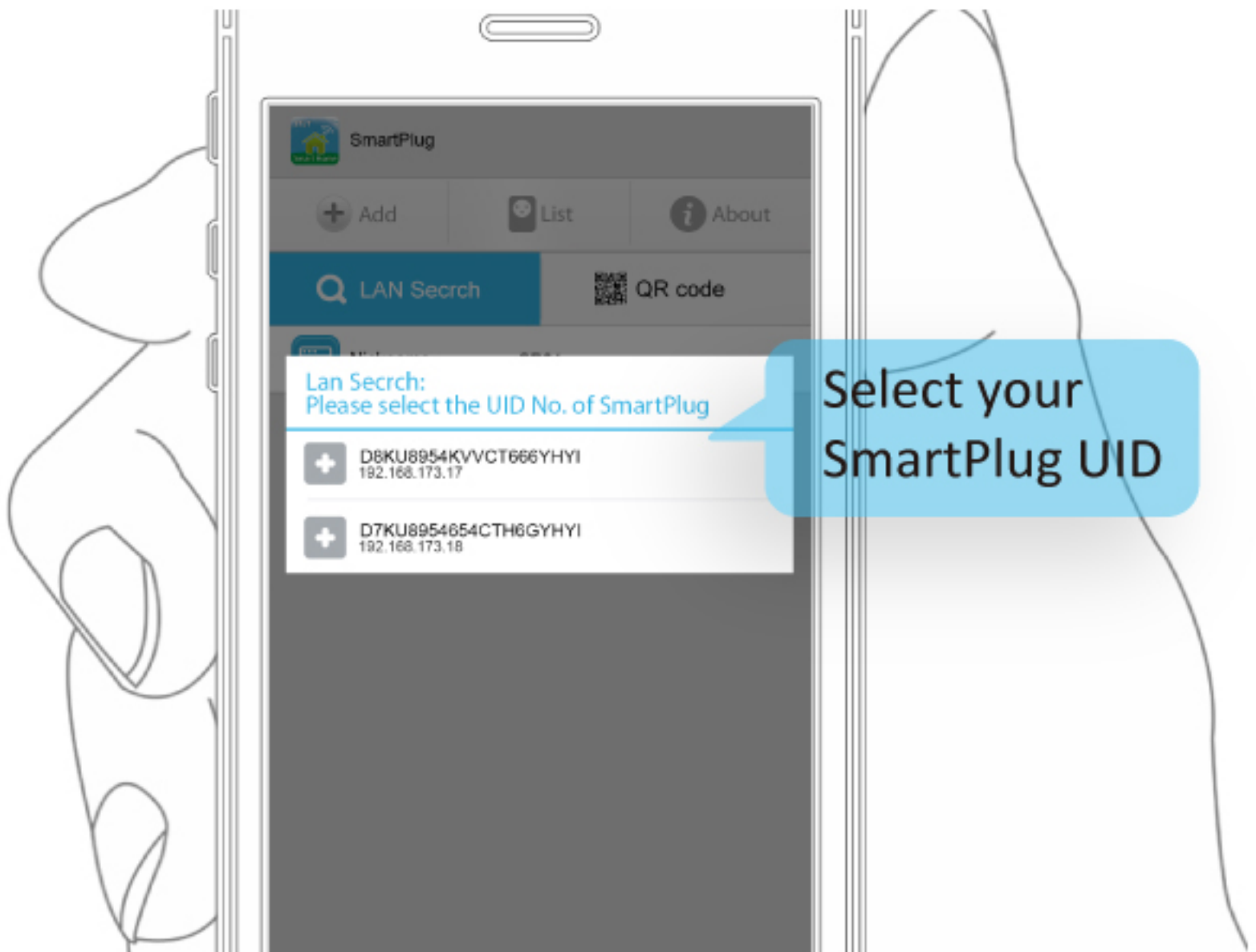
# Add the SmartPlug (LAN Search)



Press “ Add ” to see the main screen show “ LAN Search ” and “ QR Code ”.

You can enter a Nickname to distinguish which electrical home appliance plugged inside the SmartPlug.

# Select the SmartPlug

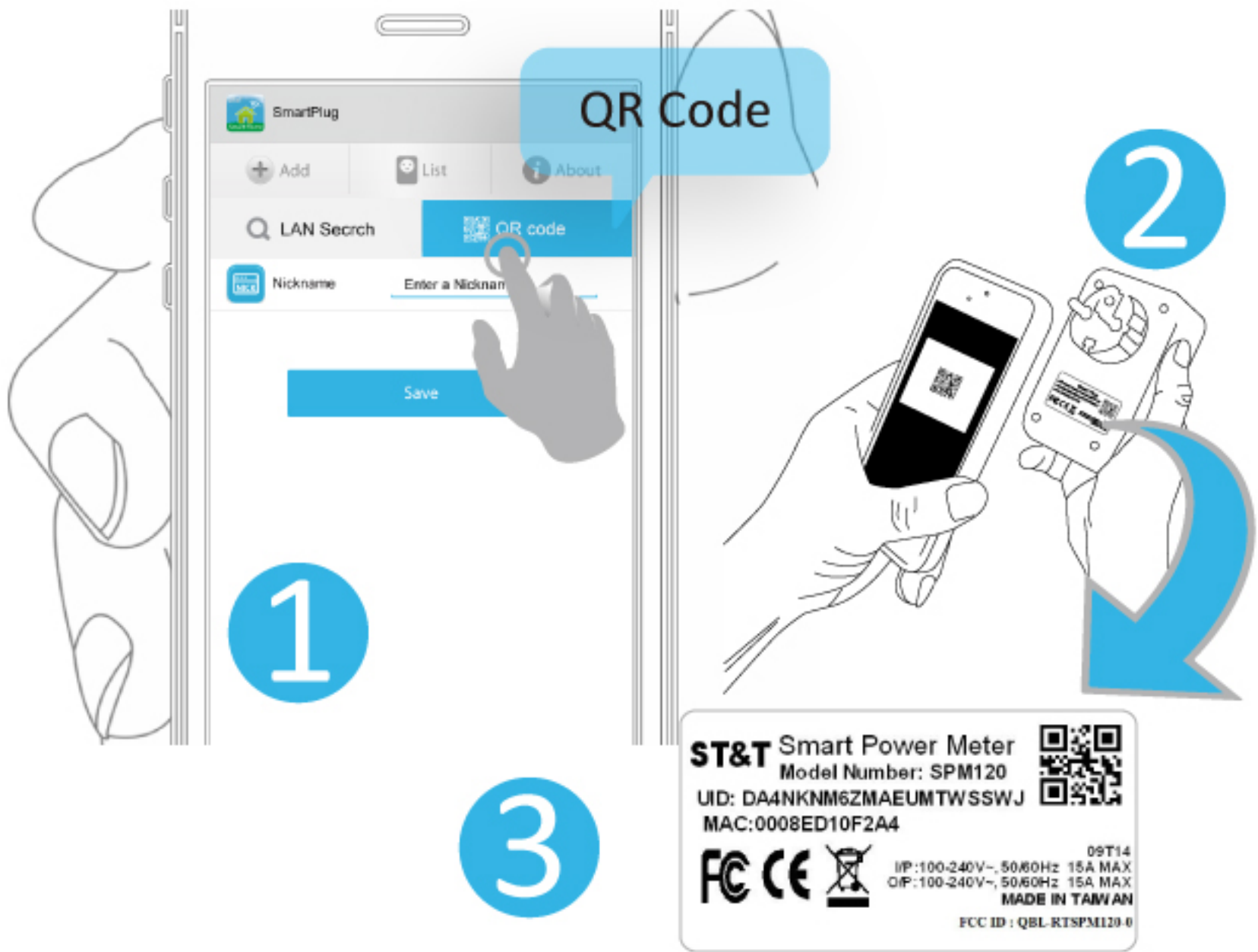


There are two methods to link with SmartPlug by LAN Search or QR Code.

LAN Search :

The surrounding WiFi Devices searched by smartphone will pop up. Please select the UID number of the SmartPlug for connection.

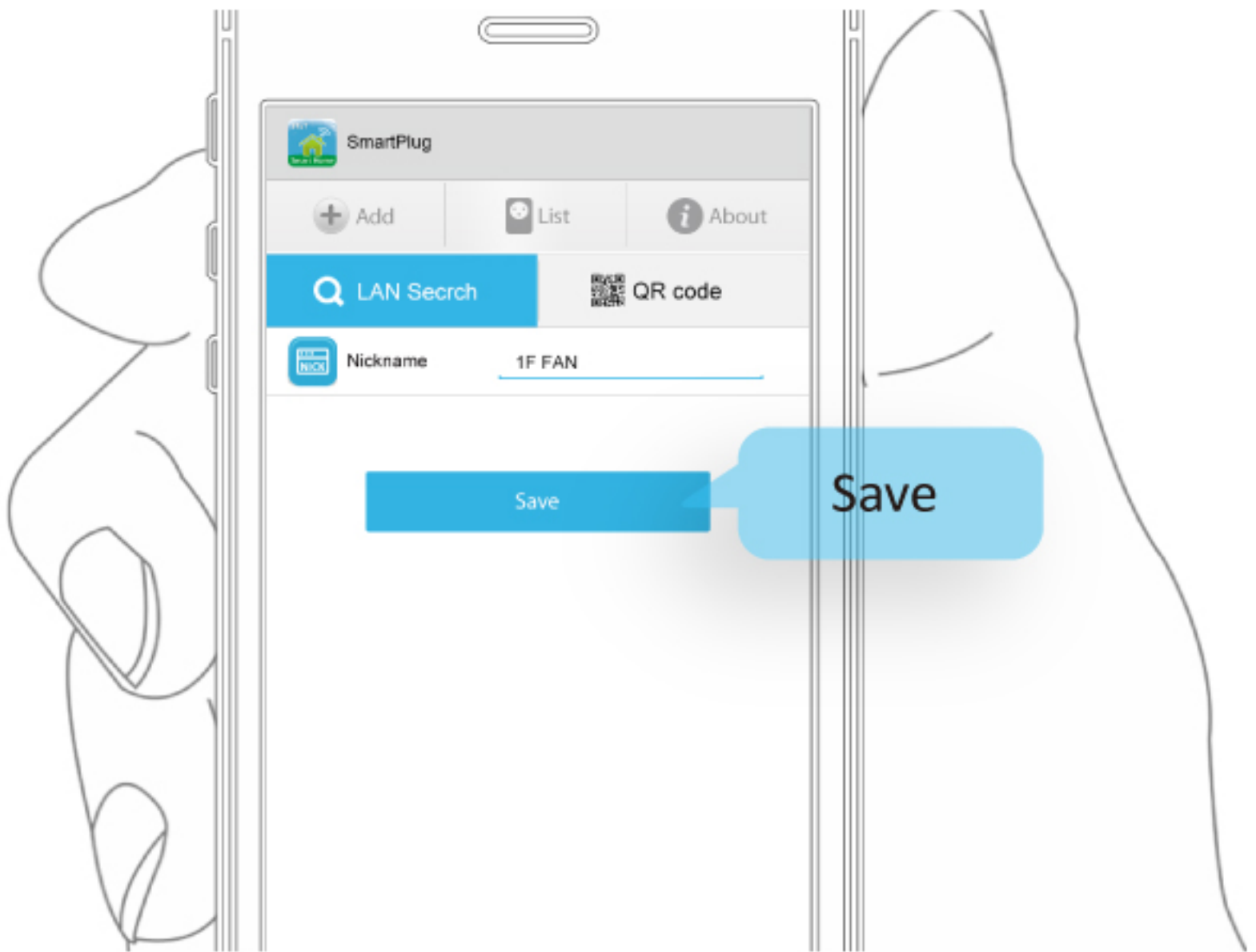
# Add the SmartPlug (QR Code Scan)



QR code:  
Scan the QR code labeled on the SmartPlug Device.

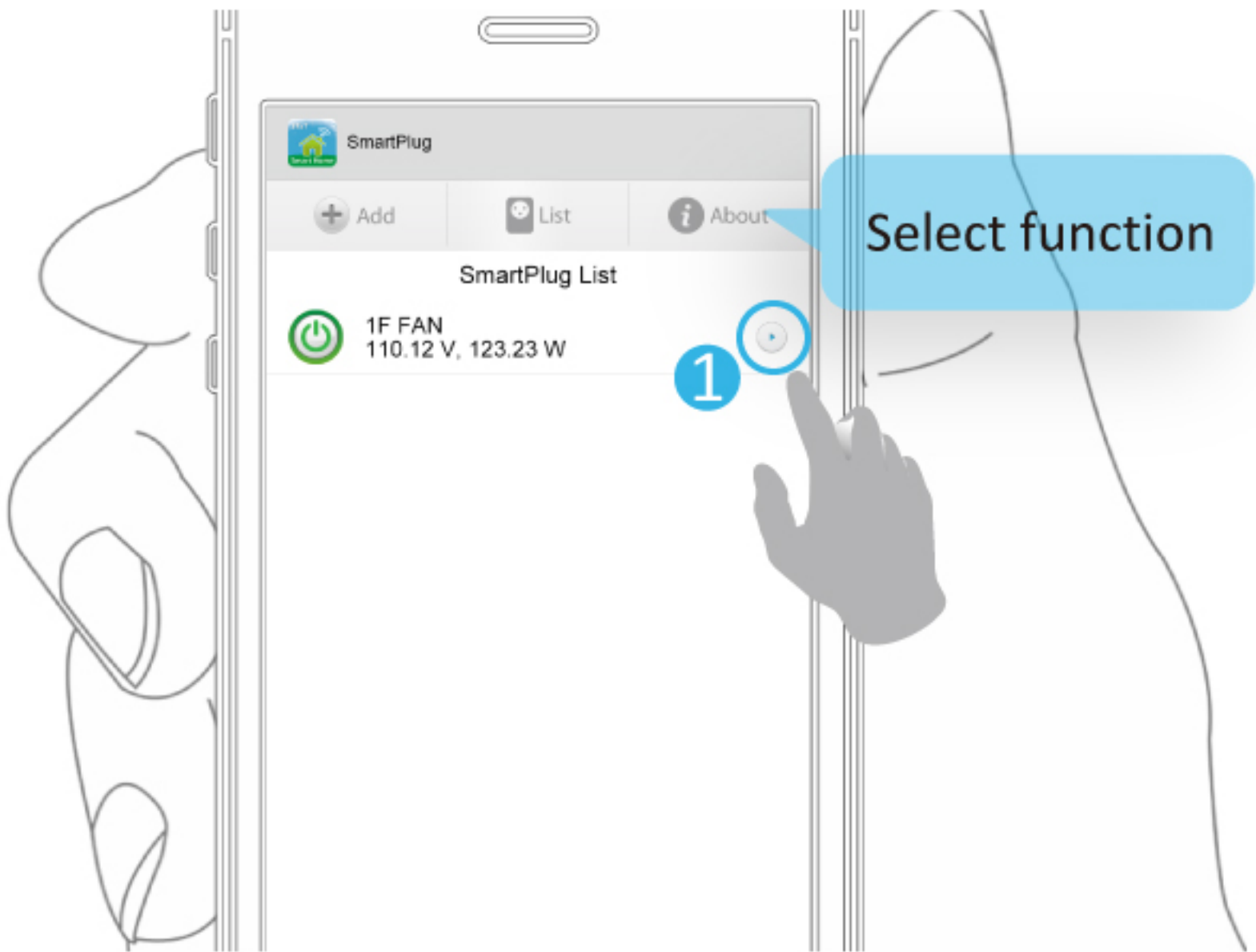



# Give your Nickname for SmartPlug



Please press “ Save ” and the setup is complete. Then you will find the total SmartPlugs items connected with your SmartPhone.

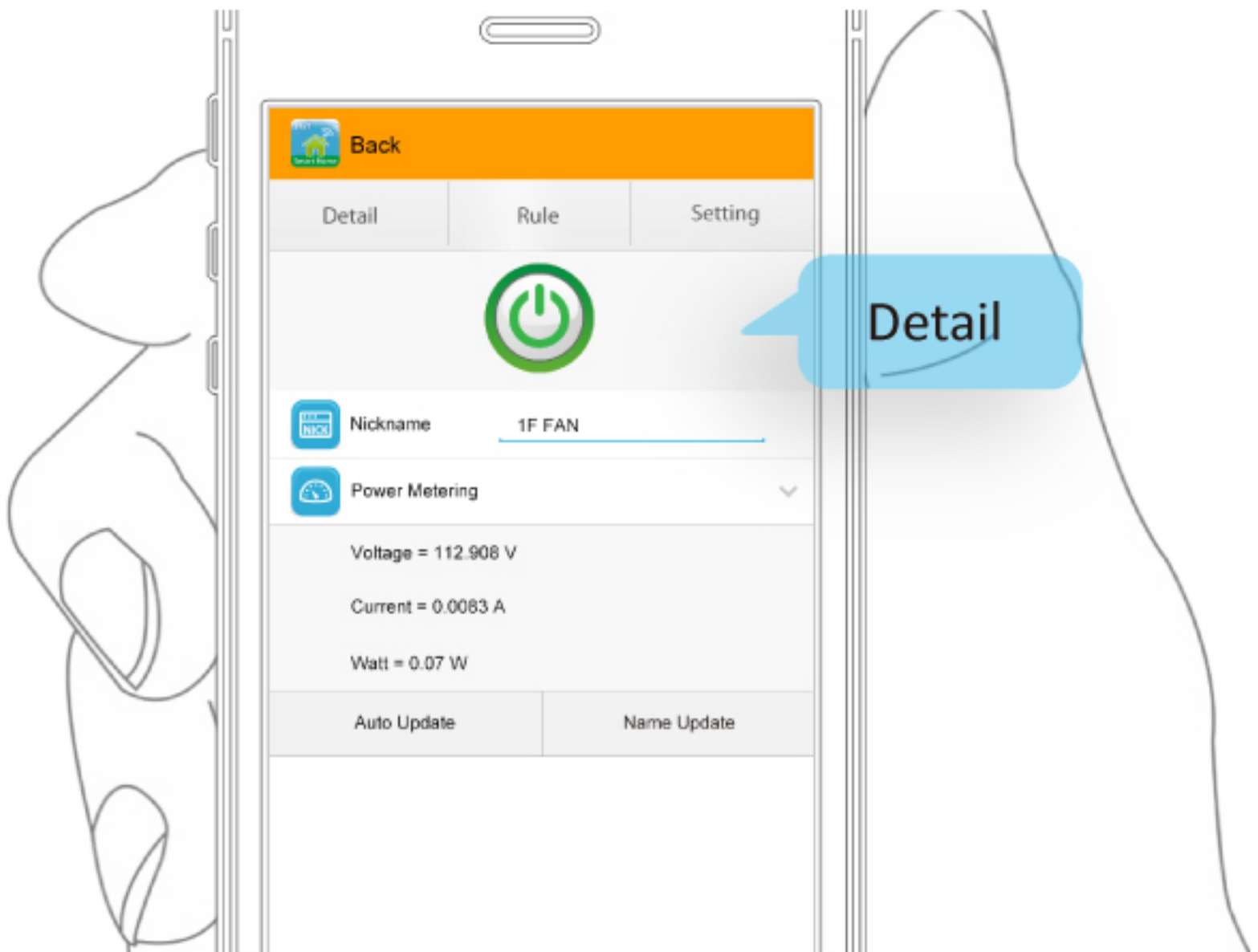
# SmartPlug List



Press each of the SmartPlug  **1**, and you can get the information of power consumption.

Function List: “ Detail “ “ Rule “ “ Setting “

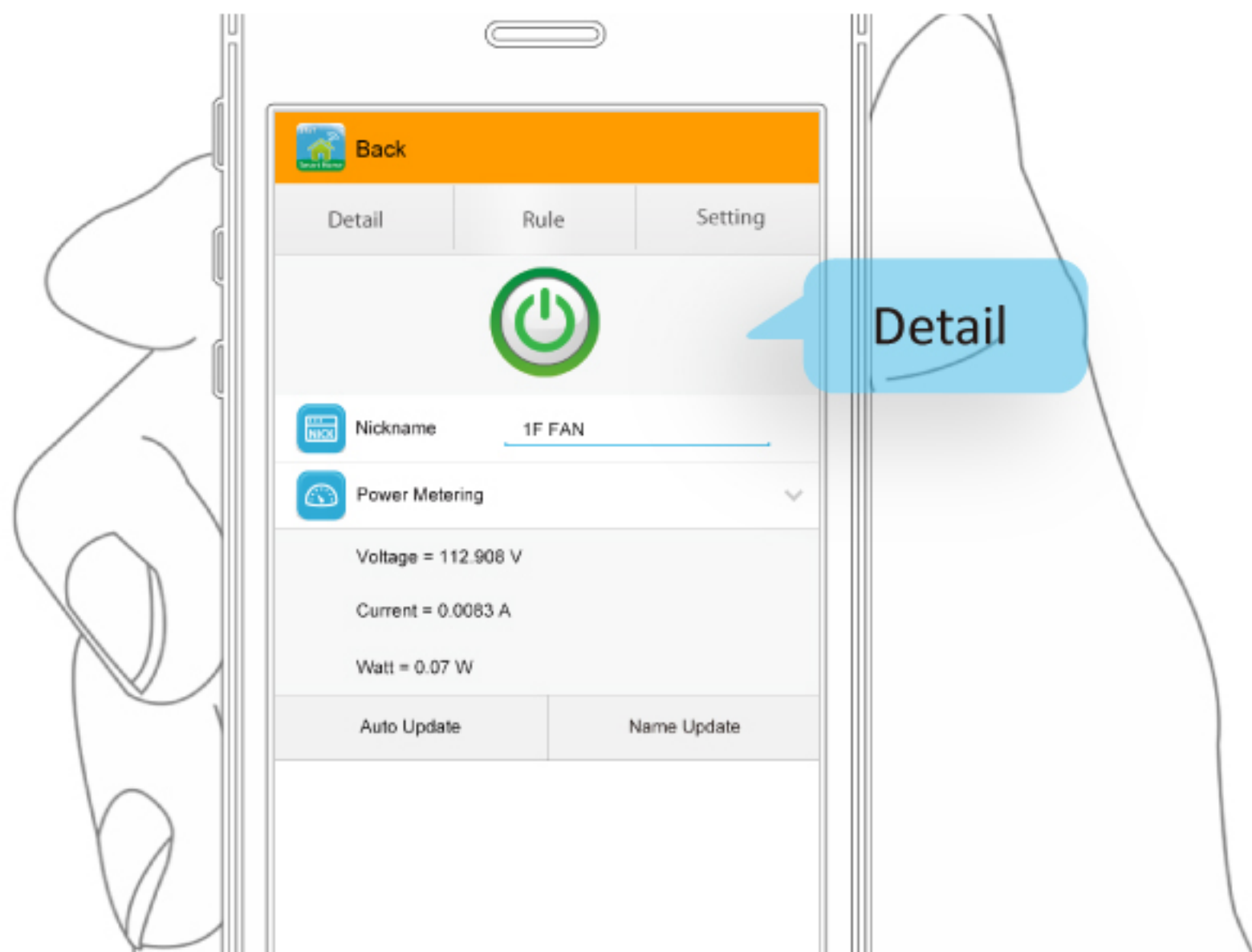
# SmartPlug Dara



## Detail :

Press the icon of Power Symbol and then the Green light will display on the main page. If you have any electrical device on the SmartPlug, it can switch on the device. Press the icon of Power Symbol again and it will switch into Grey light. If you have any electrical device on the SmartPlug, it will switch off the electrical device.

# Setup Your SmartPlug Security Password

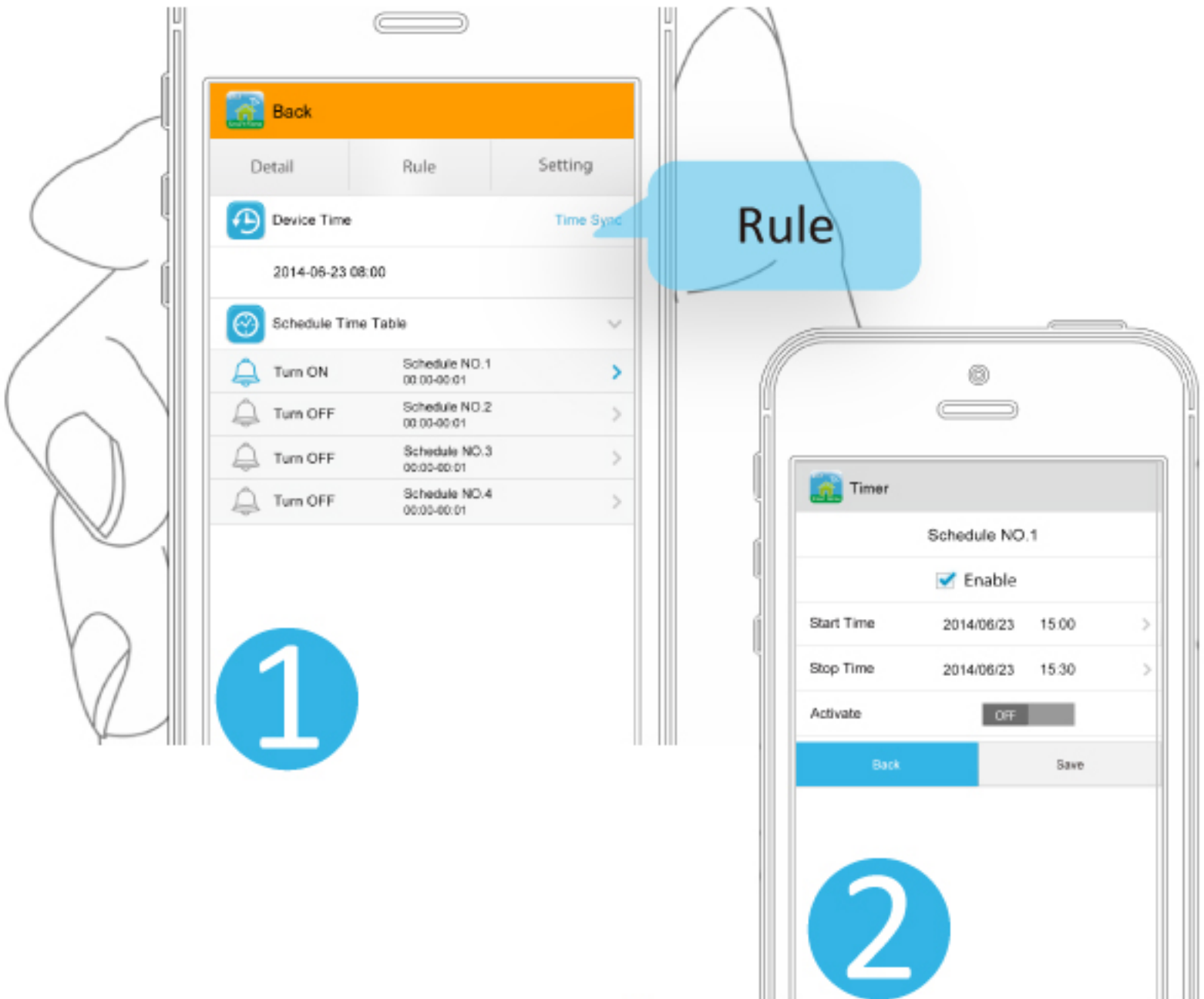


## Note:

The default of SmartPlug password is "BLANK". Please setup your Security Password for your SmartPlug. Then the other users need to type the password to access the SmartPlug.



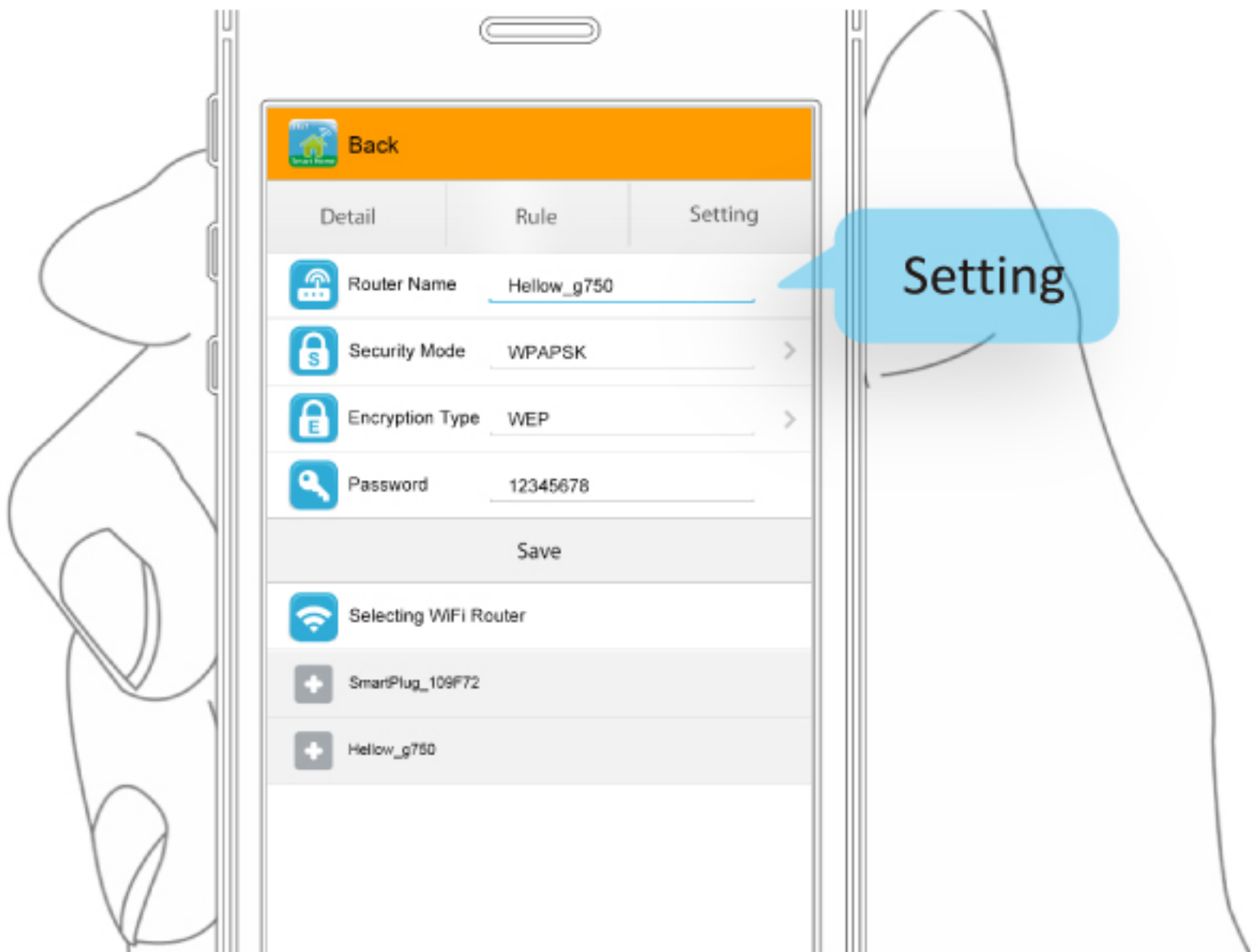
# Setup the Schedule



## Rule :

- 1 You can synchronize the time zone of SmartPlug same as your Smart Phone's.
- 2 You can schedule the certain period to Power on / off the Electricity.

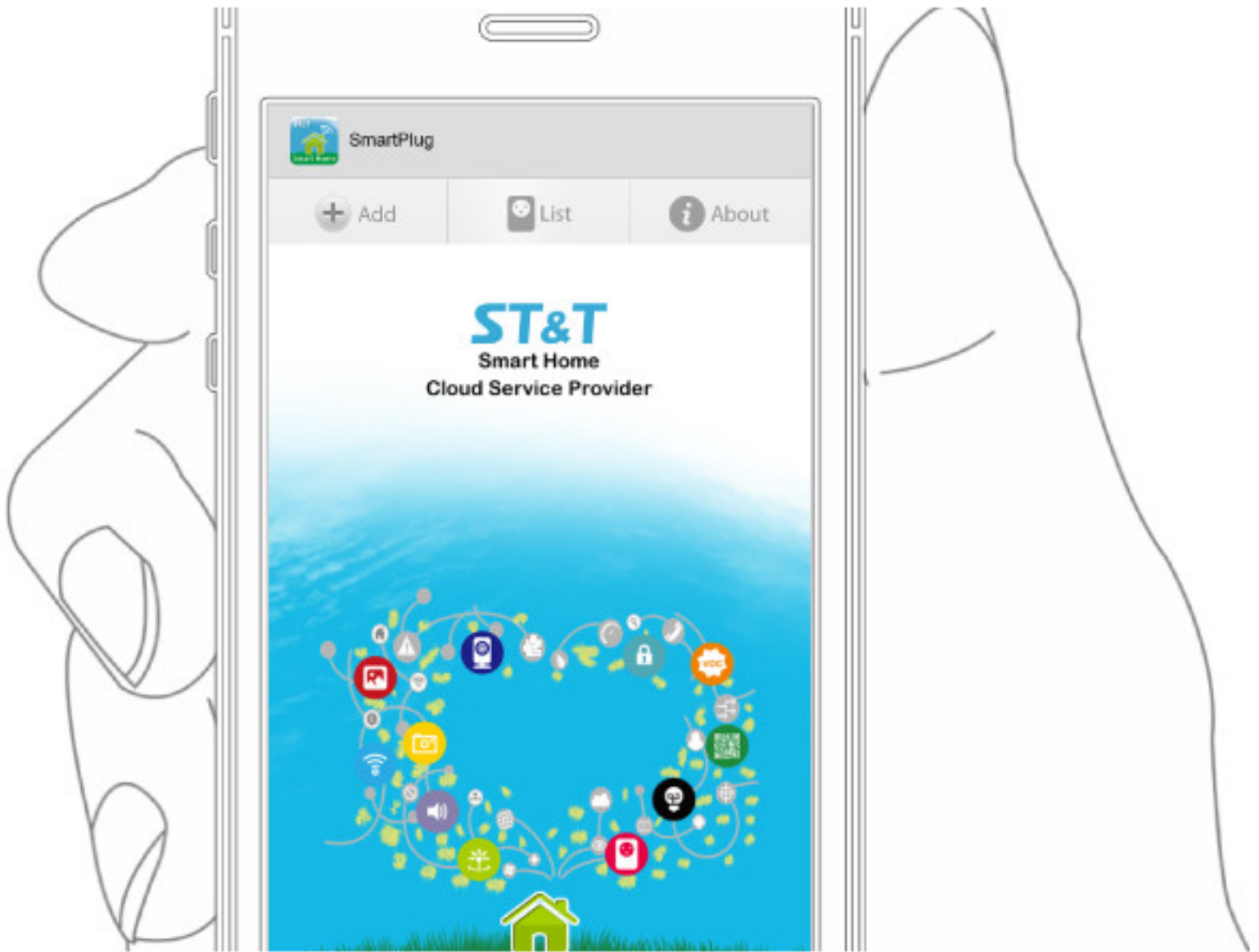
# Join to the WiFi AP Router



## Setting :

You can select any WiFi Router as the connection media between SmartPlug and your SmartPhone.

# Information



Copyright and version information

## **FCC Part 15.19**

This device complies with Part 15 of the FCC Rules. Operation is subject to the following two conditions:

- (1) this device may not cause harmful interference and
- (2) this device must accept any interference received, including interference that may cause undesired operation

## **FCC Part 15.21 information for user**

You are cautioned that changes or modifications not expressly approved by the party responsible for compliance could void your authority to operate the equipment.

## **FCC Section 15.105 Information to the user.**

NOTE:

This equipment has been tested and found to comply with the limits for a class B digital device, pursuant to Part 15 of the FCC Rules. These limits are designed to provide reasonable protection against harmful interference in a residential installation. This equipment generates, uses and can radiate radio frequency energy and, if not installed and used in accordance with the instructions, may cause harmful interference to radio communications. However, there is no guarantee that interference will not occur in a particular installation. If this equipment does cause harmful interference to radio or television reception, which can be determined by turning the equipment off and on, the user is encouraged to try to correct the interference by one or more of the following measures:

- Reorient or relocate the receiving antenna.
- Increase the separation between the equipment and receiver.
- Connect the equipment into an outlet on a circuit different from that to which the receiver is connected.
- Consult the dealer or an experienced radio/TV technician for help.

## **IMPORTANT NOTE:**

### **FCC Radiation Exposure Statement:**

This equipment complies with FCC radiation exposure limits set forth for an uncontrolled environment. This equipment should be installed and operated with minimum distance 20cm between the radiator & your body.