

Appendix D - EUT User's Manual

USER'S MANUAL.



Contents



Main Feature

Main Functions



FCC NOTICE

THIS DEVICE COMPLIES WITH PART 15 OF THE FCC RULES.

OPERATION IS SUBJECT TO THE SOLLOWING TWO CONDITIONS:

- (1) THIS DEVICE MAY NOT CAUSE HARMFUL INTERFERENCE, AND
- (2) THIS DEVICE MUST ACCEPT ANY INTERFERENCE RECEIVED, INCLUDING INTERFERENCE THAT MAY CAUSE UNDERSIRED OPERATION.

This equipment has been tested and found to comply with the limits for Class B digital device, pursuant to part 15 of the FCC Rules. These limits are designed to provide reasonable protection against harmful interference in a residential installation. This equipment generates, uses and can radiate radio frequency energy and, if not installed and used in accordance with the instructions, may cause harmful interference to radio communication. However, there is no guarantee that interference will not occur in a particular installation. If this equipment does cause harmful interference to radio or television reception, which can be determined by turning the equipment off and on, the user is encouraged to try to correct the interference by one or more of the following measures:

- Reorient or relocate the receiving antenna.
- Increase the separation between the equipment and receiver.
- Connect the equipment into an outlet on a circuit difference from that to which the receiver is connected.
- Consult the dealer of an experienced radio/TV technician for help.

Note : This unit was tested with shielded cables on the peripheral devices. Shielded cables must be used with the unit to insure compliance.

Note : The manufacturer is not responsible for any radio or TV interference caused by unauthorized modifications to this equipment. Such modifications could void the user's authority to operate the equipment.

Starting

Real USB-TV is supported USB port and new generation of video capture material able to watching TV/Video & capture video.

Real USB-TV can display video & audio from VCR, LDP, Cam-corder or etc on computer monitor and capture this screen to Digital data, so it is not only for watching TV, but the best solution of your computer.

Main Features

- 1) Excellent System Compatibility & Perfect Plug & Play (PnP) Support**
- 2) Portable TV with Self Antenna, Audio Function**
- 3) Improved Video quality with the latest technology**
- 4) Recording & Streaming System (Supporting MPEG-4 way of WMT perfectly)**
- 5) Remote conditioner function (Option)**
- 6) Compact Design**

Main Functions

1) TV Receiver

supports TV/Cable-TV, Supply Internal Antenna & External Cable, Automatic Channel setting & Memory.

2) External Video Input

You can watch and enjoy the Video or Games on the screen of USB TV by connection of external video equipment like cam-corder or game machine. Specially it supplies not only normal Video signal but also Super-video output, so if it is connected to cam-corder with S-Video output, the screen will be more clear.

3) 640*480 Full Screen Video Play

4 times of multi-memory comparing with normal USB capture equipment & Full screen of 640*480 with improved technology

4) Snapshot Capture, Recording of motion screen

Max.640*480 size of snapshot capture and recording of motion picture.

-In case of Recording Motion picture of MPEG-4(WMV) & Quality of MPEG-1(Video CD), 1.5G hard disk can record more than 10 hours (Recommended capacity for 320*240 30fps : P-III 500MHz / RAM 128MB)

5) Motion picture Streaming Broad-cast

The motion picture on PC thru Real USB-TV can be seen in the other place connected by network or internet

6) Caption function

7) Remote-control (Option)

Specification

Item	Classifications	Contents
PC I/F	USB	V1.1
Tuner	Broadcasting System Channels Antenna	NTSC-M VHS/UHF/CA-TV Built-in, External Antenna
Video	Standard Resolution Frame Rate	NTSC/PAL CCIR601, CIF 30fps Max
	Video Input	Built-in Tuner External Video, S-Video
	Control	Brightness/Contrast Saturation/Hue
Audio	Input	Built-in Tuner External Audio
	Output	USB Audio
Dimension	Size	125*75*30(mm)
	Weight	

User' s interface

- Minimum needs for System

- ♣ PC : Celleron 300Mhz / RAM 64MB
- ♣ OS :Over Windows 98
(Over DirectX8.0 / MediaPlayer 7.0)
- ♣ HDD : Space of over 20MB

- Recommended needs for record Video of 30frm

- ♣ Over Pentium -733Mhz / RAM 128MB

Included goods in package

User' s manual

CD_RAM for setting

Real TV receiver

Line-out cable

Setting

Please set if your window do not have followings.

- DirectX 8.0

It is included in setting CD, but we recommend to download new version from web site of microsoft.

- Window Media Incorder 7.0

It is included in setting CD, but we recommend to download new version from web site of microsoft.

Warning

- If you set DirectX 8.0, it rarely can be incompatible with VGA or Sound card. If it occurs, please solve the problems with each relevant company.
- VIA Board can be occurred problem in Win 98, in this case, please set USB VIA PATCH additionally.
- Other problems may be written in web page in Microsoft or Real TV of FAQ Part.

Setting of Hardware

1. If you connect Real TV to your PC thru USB Port, you can see Composite USB Device as following or USB Serching Box, please press Next.



2. After select the first one, please press Next



3. Insert CD-ROM after select (L) and then, Please press [Search(R)] and select the Drive included CD-ROM and select the directory as following, and then please press Next.



4. Please press Next, if you can see the following box.



5. Press Finish and then setting of Nagatech USB TV!Pro(NTSC+) is completed.



6. Next is the process of setting Nagatech USB TV! Pro Audio (N+).

Please press Next.



7. After select the first one, please press Next.



8. Please select D:\Driver in (L) and then press Next.



9. Please press Next, if you can see the following box.

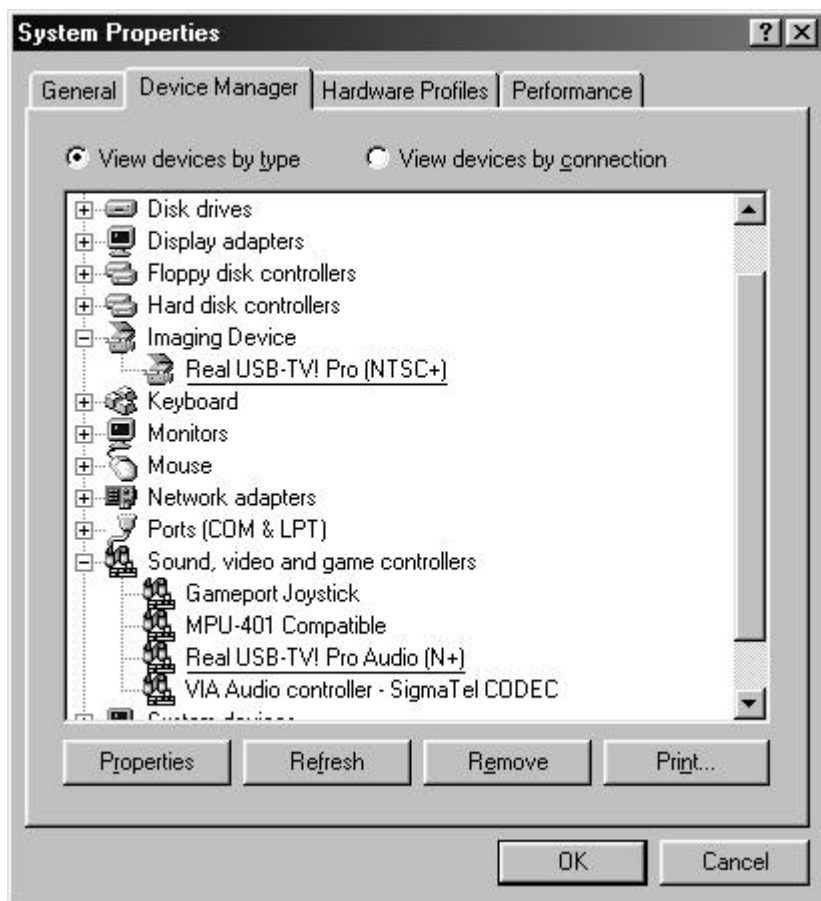


10. Press Finish and then setting of Nagatech USB TV!Pro Audio(N+) is completed.



11. Please select Device Manager of [System Properties], and double-click [Images] and [Soundmvideo and game controller], you can see Nagatech USB TV! Pro (NTSC+) Nagatech USB TV! Pro Audio (N+).

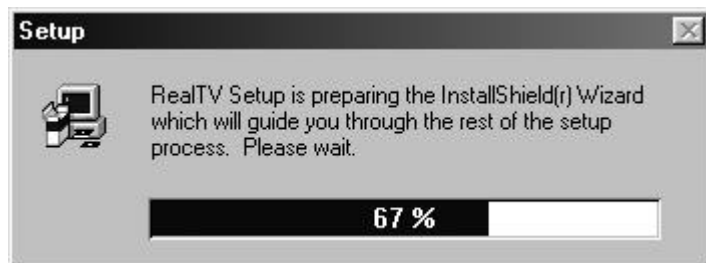
This means all device completed successfully.



Setting of Software

1. Please input CD-ROM drive supplied by DiVATel.

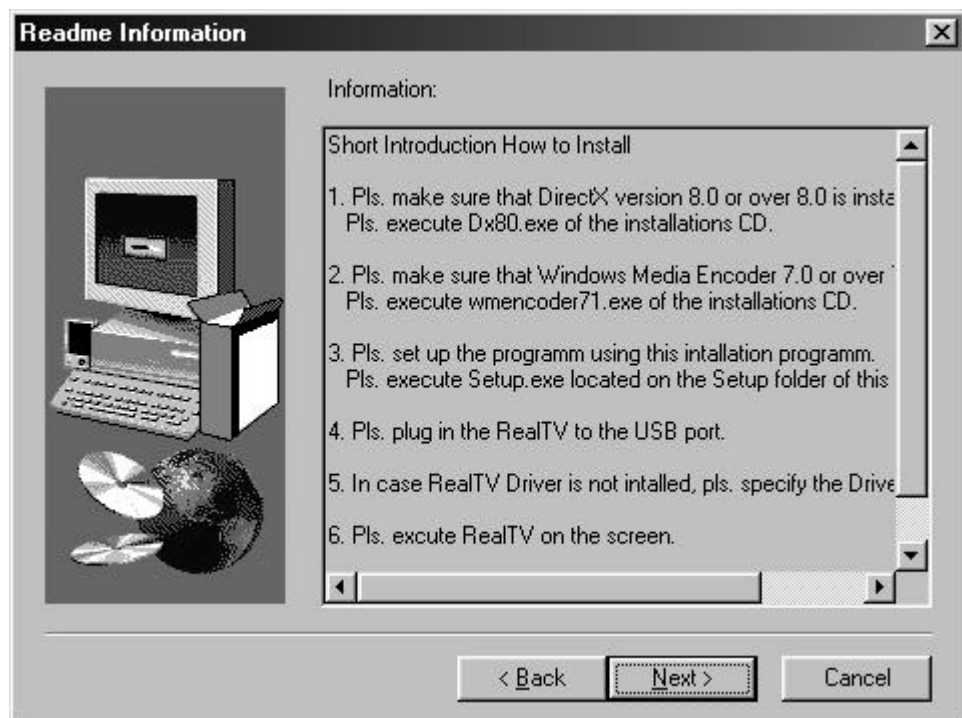
- If CD is input, the program will be set up automatically.
- If it is not set up, please execute (e:\setup\setup.exe)



2. If you can see the following box, please press Next.



3. Please read this box[Readme Information] and press Next.



4. Please choose Destination location and press Next.



6. It will be execute setting of program automatically.



7. If you can see this box, please press Finish.

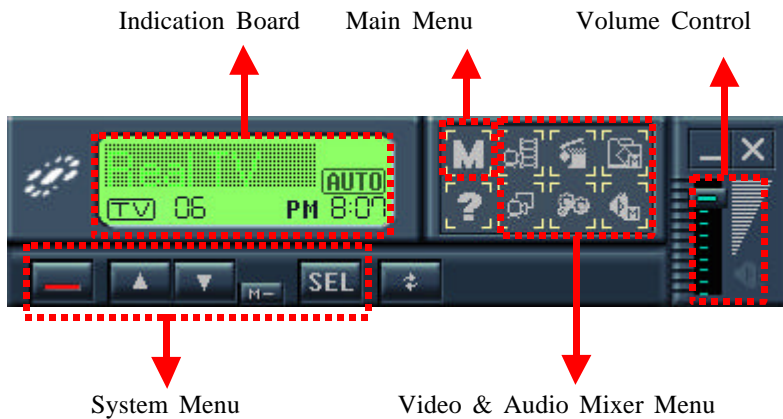


Introduction of Real TV

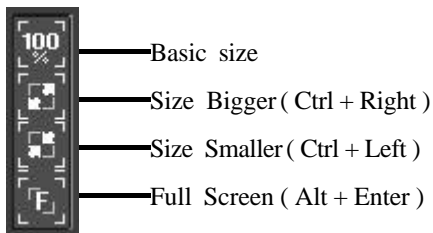
Main screen



Controller

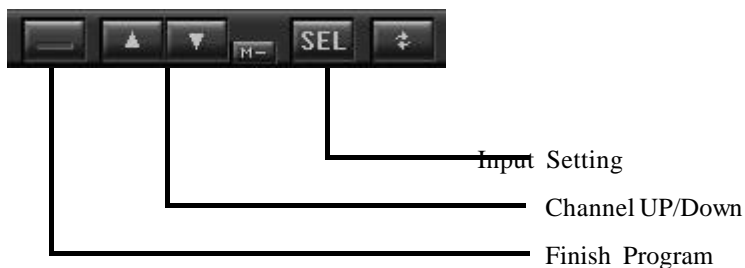


Buttons of Main Sree



Detailed functions

1. System Menu

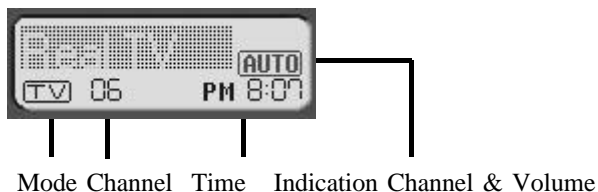


** You can use Number keys to change channels.

- Press Number key 1 and 1 sequently, wait for one second, it is changed to channel

11.

2. Indication Board



3. Main Menu

✓ Control Panel	Z	
Select Input		▶
Channel Up	Up	
channel Down	Down	
Memory channel		▶
Picture Size		▶
Audio		▶
Initiating Audio		
Record		▶
Option		
Option Setup		▶
Help		▶
Program Exit	Alt+F4	▶

Control On/Off

Channel Up/Down

Finish Program

1) Choose Mode : You can choose each mode.

• TV	Alt+1
CATV	Alt+2
Video	Alt+3
S-Video	Alt+4

2) Screen Size : You can change screen size.

Return to Basic Size	Ctrl+Enter
Picture Size Up	Ctrl+Right
Picture Size Down	Ctrl+Left
All Picture	Enter

3) Volume : You can control volume.

Volume Up	Left
Volume Down	Right
Mute	M
Audio Input Select	

4) Recording : Starting bitmap(Screen Capture) saving & recording moving picture.

Save Bitmap	S
Motion Picture Recording Start	R
Motion Picture Recording Stop	R
Recording File Play	Ctrl+F

5) High rank setting : You can change Device & setting.

(1) Device : Hardware Changing.



(2) Setting : If you select setting menu, you can see as following.



▶ Video Capture Filter

: Output box for various control of Video.

- Advanced Tuner Control : Control Tuner manually.

(Normal user do not use.)

- Video Decoder : Indicate setting Video standard.

- Advanced : Setting of band width & no. of Vertical/Horizontal Off-Set.

You can find out the best screen with picture control of up/down/right/left.

- Camera Control : (Normal user do not use.)

- Video Proc Amp :Controll picture' s brightness or Shade.

▶ Video Capture Pin

: Output box for setting of Video format.

- Frame Rate : Indicating present setting frame rate.

- Color Space/Compression : Setting color space/compression.

Normally it is the best quality of video in YUY2 mode.

but, ' YUY2' mode can not be set in certain video chip. (EX, Trident)

- Output Size : Setting of size for screen.

▶ Video Preview Pin

: Output box for setting video preview format.

▶ Video Crossbar

: Setting input and output in same time.

Input : Video Tuner In, Video SVideo In, Video Composite In

Output : Video Decoder Out Audio Decoder Out.

▶ TV Tuner

: Setting of TV Channel.

▶ Audio Capture Pin

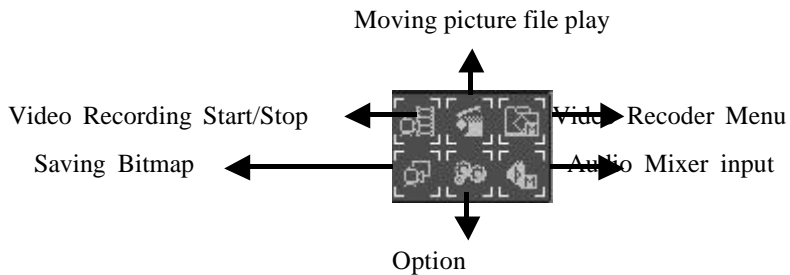
: Filter setting for Audio capture.

▶ Video Input

: Figure setting for video input.

- Video Turner : TV mode
- Video Svideo : Super Video (S-Video)
- Video Composite : Normal Video

4. Video & Audio Mixer Menu



5. Video Recorder Menu



Record Start(S)	R
Record Stop(I)	R
File Output(F)	Ctrl+F
Session(S)	
Session Register Information(R)...	
Monitor Panel(M)	Ctrl+M

Recording Start



: If you press start button, Recording will be seen in indication board and “recording” will be display in main screen.





Output file



: If you want to see recorded video, it will be played with window media player.

Cession

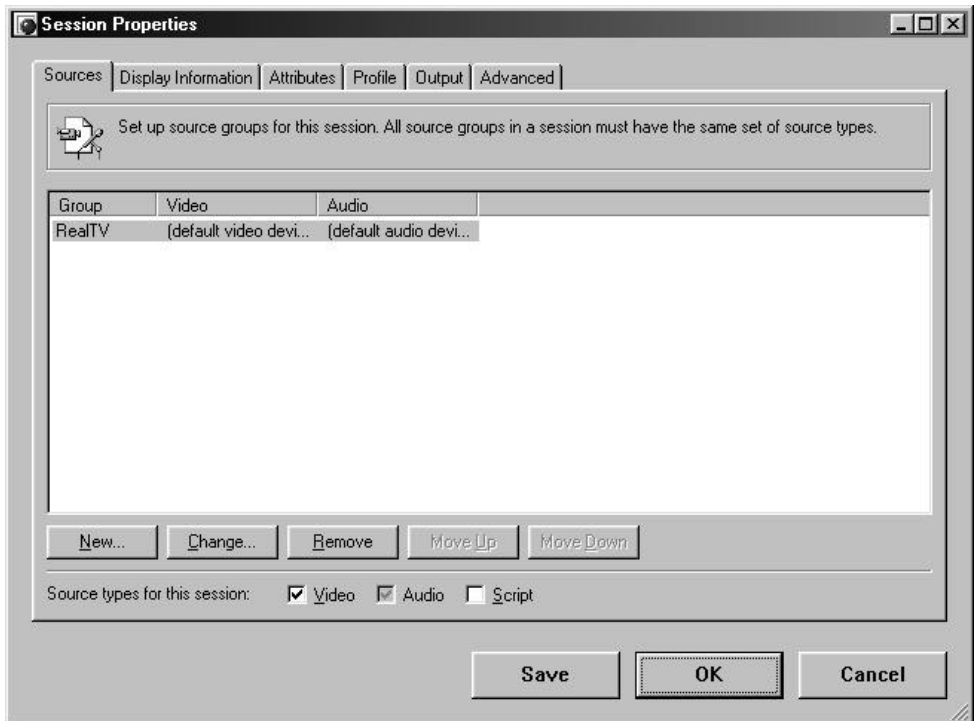
: Setting quality of Video, Audio, Streaming.

• High Definition video	(&1)
Middle Definition video	(&2)
Low Definition video	(&3)
High Quality Audio	(&4)
Middle Quality Audio	(&5)
Low Quality Audio	(&6)
High Quality Streaming	(&7)
Middle Quality Streaming	(&8)
Low Quality Streaming	(&9)

Recorder session application

: You can set up the edit of existing settings and excess the other setting or new session by using session application information.

If you want to make incording session by using this box, you must input original, input tool, profile and output information at least.

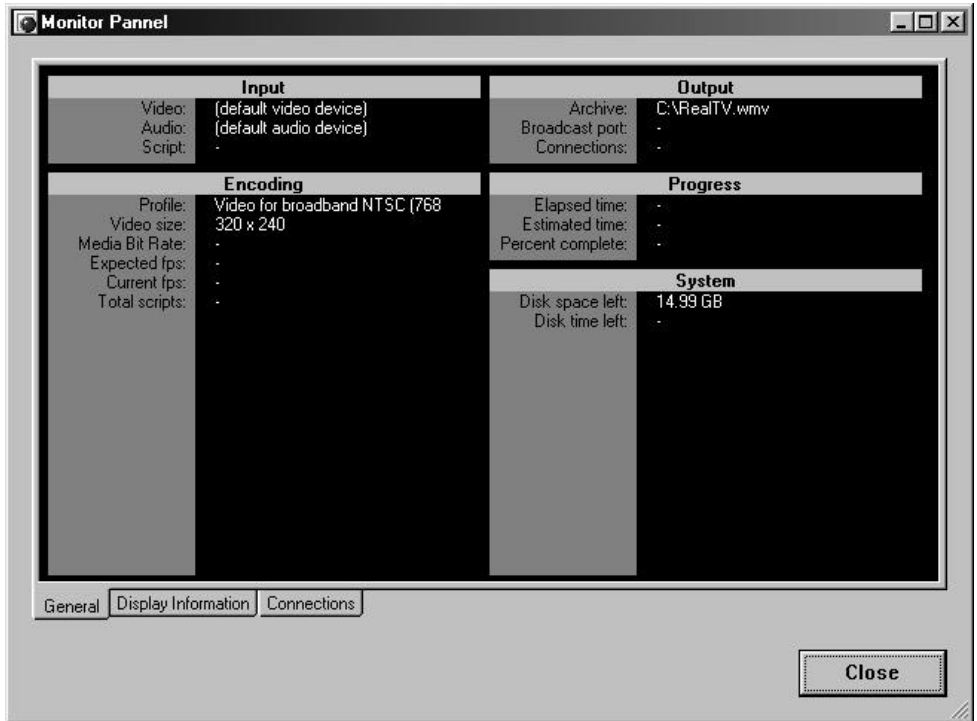


Monitor panel Box

: Monitor panel consists of 3 tabs and each tab includes information about incording session.

Normal tap informs tool, profile, frame/sec. and information tap informs additional information like name, copyright, maker and etc.

Connect tap informs internet protocol(IP) address list connected with computer.



6. Bitmap Saving



: if you press this button, after stopping screen and it will be seen in screen. (Captured file is saved in C:\Program Files\RealTV folder)

7. Option

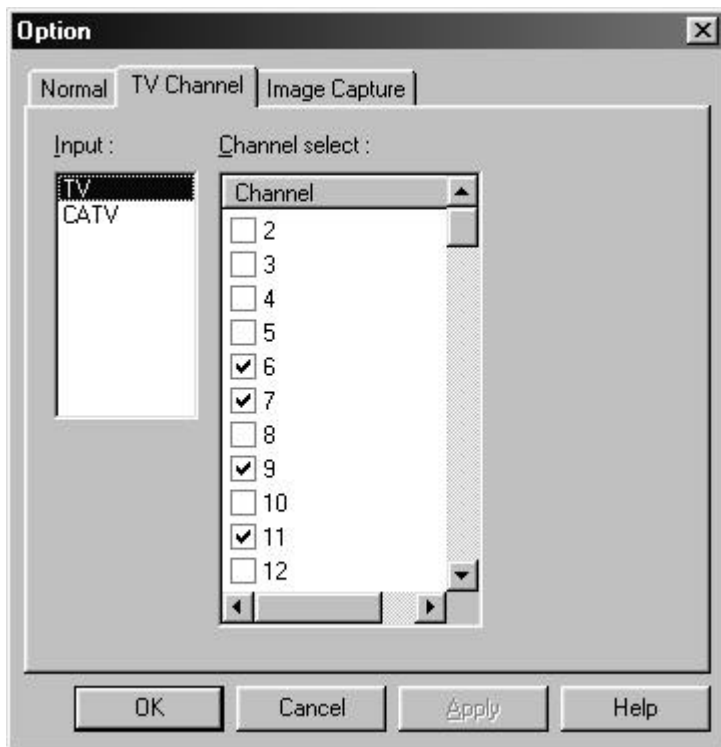


: You can change information of setting, TV channel, capture of still Image.

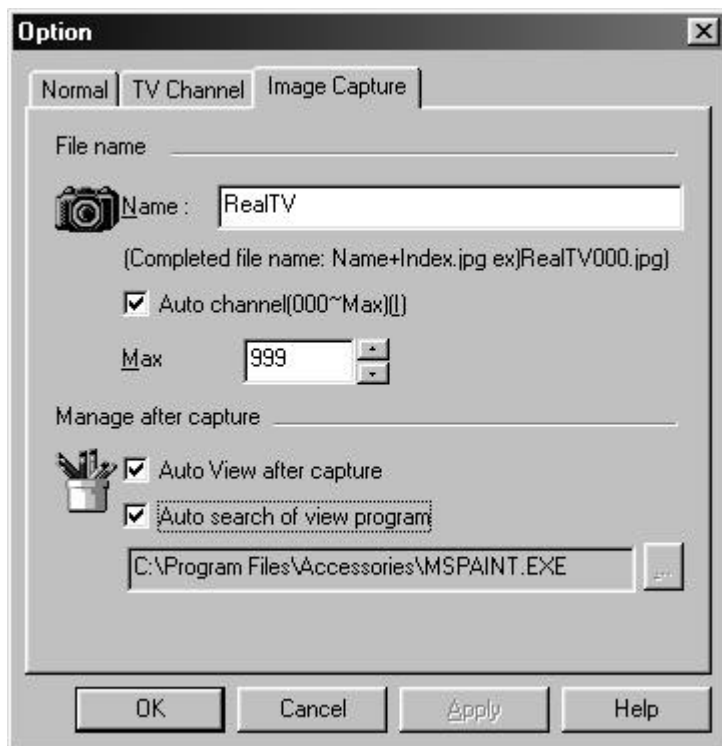


** Choose Audio Mixer – You can control Volume and recording information. (It works

same with Audio Mixer Menu in controller.)



** You can choose mode(TV, CATV, FM) and channel.



** You can change name of bitmap saving file.

** You can set up option control after bitmap saving.

8. Audio Mixer



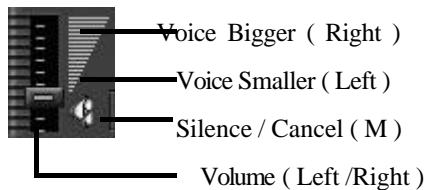
: You can change information of Volume and Voice Recording control.

Volume Control
<input checked="" type="checkbox"/> Wave
SW Synth
3D Depth
Aux
Video
CD Audio
Line In
Microphone
Phone Line
PC Speaker
Mono Out
Mono Mix
Microphone
Recording Control
Mono Mix
Stereo Mix
Aux
Video
CD Audio
Line In
Microphone
Phone Line

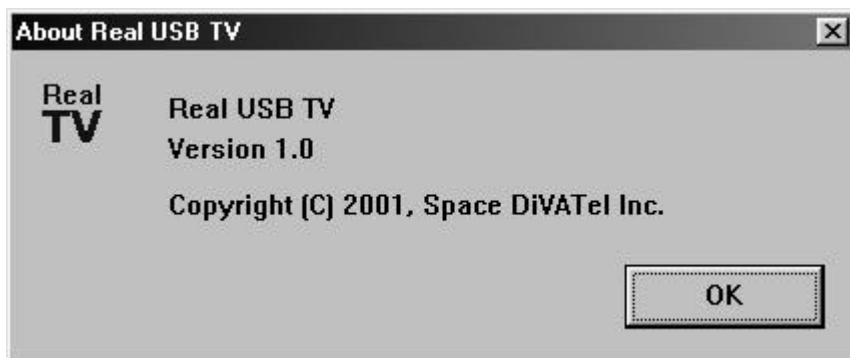


9. Voice control

:



10. Copyright



DiVACESS reserves the right to make any changes to any products described herein at any time without notice. DiVACESS does not assume any responsibility or liability arising out of the application or use of the product described herein, except as expressly agreed to in writing by DiVACESS, nor does the purchase or use of product from DiVACESS convey a license under any patent right, copyrights, trademark rights, or any other of the intellectual property right of DiVACESS or third parties. All right reserved.

A/S Center

Address : 10th, Happy World B/D., 917-6, Mok 1-dong, Yangcheon-gu, Seoul, Korea

Tel : 82-2-3445 – 4600

FAX : 82-2-3445 – 8830

Web Site : www.divatel.co.kr

MS-Windows is mark of Microsoft Corporation.

The other name is each owner' s mark.