

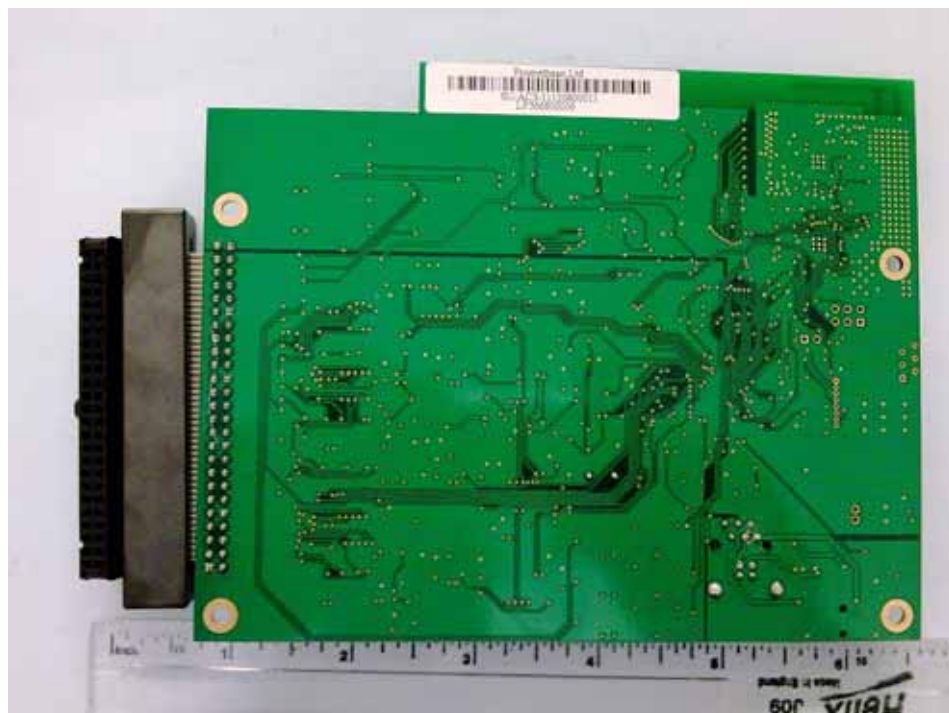
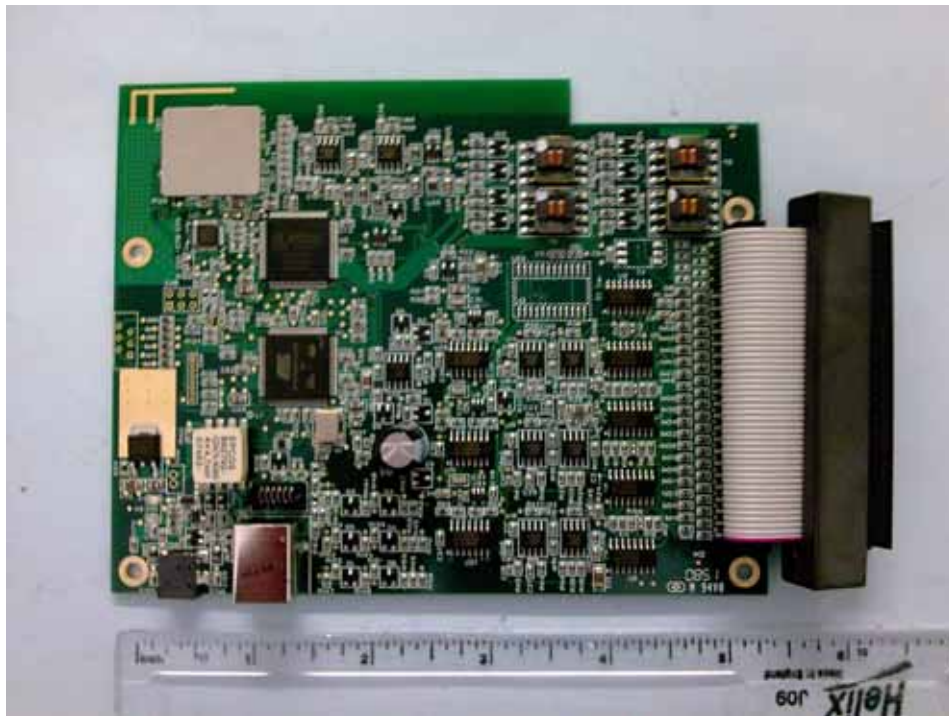
**PHOTOGRAPH No. 1      2.4GHz RADIO PCB FITTED ON REAR OF BOARD  
HUB UNIT WITH USB AUDIO AMPLIFIER FITTED IN THE SIDE PANEL**



**PHOTOGRAPH No. 2**

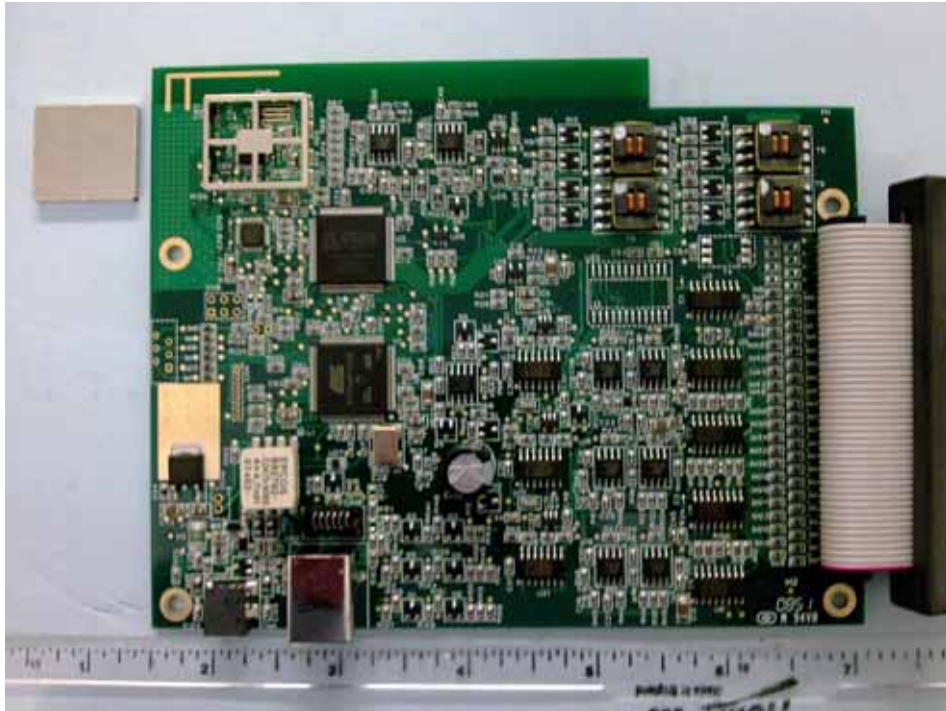
**2.4GHz PCB REMOVED FROM BOARD**

**TOP AND UNDERSIDE VIEW**



**PHOTOGRAPH No. 3**

**TOP VIEW OF 2.4GHz PCB  
SCREENING CAN REMOVED  
FROM RADIO SECTION**



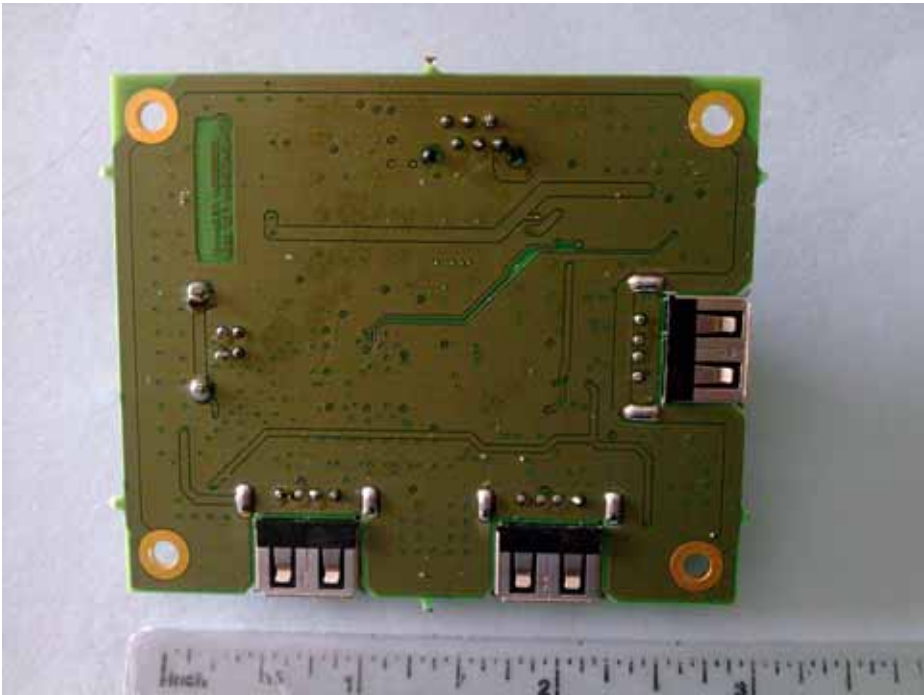
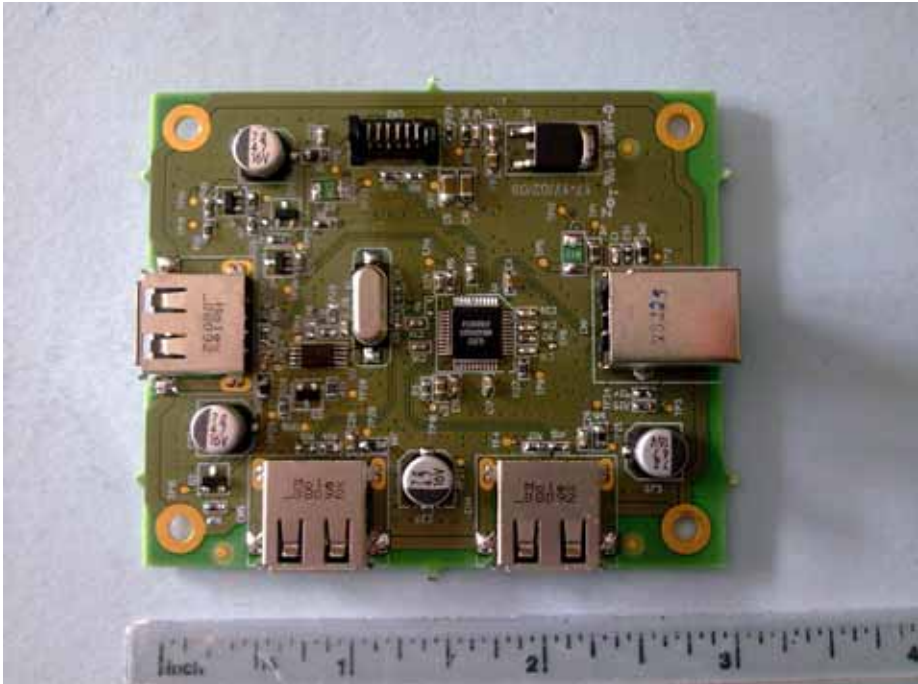
**CLOSE UP VIEW OF PCB  
SCREENING CAN REMOVED  
FROM RADIO SECTION**





PHOTOGRAPH No. 4

TOP AND UNDERSIDE VIEW OF HUB



**PHOTOGRAPH No. 5**

**TOP AND UNDERSIDE VIEW OF AUDIO AMPLIFIER**

