

ACTIVboard

Quick Start Guide



PC and Mac™
US Edition
TP-1469-US
Issue 6

All rights reserved

All information contained in this document is subject to change without notice.

Any use of the contents of this User Manual other than for the purpose intended requires express written permission of Promethean Technologies Group Ltd.

All trademarks noted with the [™] mark are the properties of their respective companies.

NOTE: All utility and driver software provided to operate ACTIV products is the property of Promethean. Use of this software is granted for the purpose of installation, set up and operation of ACTIV products and the standard feature set outlined in this guide. Promethean does not encourage or authorize any other use.

Additional application software is provided from time to time as a service to our customers. This software is licensed to the end user by the supplier. Use, possession and upgrades are the responsibility of that supplier. Registered owners of Promethean product should contact those suppliers directly for support.

ATTRIBUTION: The Bluetooth[®] word, mark and logos are owned by the Bluetooth SIG, Inc. and any use of such marks by Promethean Technologies Group Ltd is under license. Other trademarks and trade names are those of their respective owners.

Table of Contents

Safety Instructions.....	2
Safety Notices	2
Compliance.....	4
For More Information	5
Technical Support	5
User Forum.....	5
Updates.....	5
1. Installing the Software.....	6
On a Windows Based Computer	6
On a Macintosh Computer	6
2. Prepare the ACTIVboard.....	7
Serial Connection.....	7
USB Connection.....	8
Connection enabled via Bluetooth Wireless Technology.....	9
Note about the latching connector	10
3. Prepare the ACTIVboard for Bluetooth Connectivity	11
On a Windows Based Computer	11
Establish Bluetooth Connection.....	11
Connect to the ACTIVboard.....	13
Start the ACTIVdriver.....	14
Name the ACTIVboard.....	15
On a Macintosh Computer	16
Set up the device	16
Name the ACTIVboard.....	17
4. Calibrate the ACTIVboard	18
5. Launch the Software.....	19
On a Windows Based Computer	19
On a Macintosh Computer	19

Safety Instructions

This ACTIV system is supplied with a universal voltage input Power Supply Unit (PSU) branded "ACTIVboard" type number FW7400/06. This is the only approved type of PSU for use with a ACTIV system. Do not connect any other PSU to the ACTIV system.

The PSU does not contain any user serviceable parts and must not be opened. If suspected to be faulty, contact an authorized Promethean service agent to obtain a replacement PSU of the same type. Inspect the PSU for physical damage to the casing and wiring before use. If damage is apparent, take care to avoid contact with any potentially live parts. Disconnect the PSU from the electrical mains supply at the wall socket and contact an authorized Promethean service agent for advice or replacement.

The PSU is supplied with a suitable mains input lead for your specific country. It may also be supplied with additional mains leads (in the case where the country has more than one type mains plug). Only use the lead which is compatible with your mains outlet socket. Do not attempt to modify the mains lead. If a compatibility issue exists, contact Promethean or one of its service agents before attempting to connect the unit to the mains supply.

Safety Notices



Be aware of the following general precautions before installing or operating any products:

Read all instruction manuals and user guides supplied on the Application CD as these include important Health and Safety information.

Adult supervision is recommended at all times when children are operating the equipment.

Promethean are always pleased to advise customers about classroom layout and environment. We do however, always suggest that a space of 1m is left either side of the board to allow for free movement.

The system has been designed and set up by trained personnel. Do not attempt to alter it in any way; you may increase the risk of system malfunction.

If the system malfunctions, never attempt any repairs by yourself, it will invalidate your warranty.



Your LCD projector emits a beam of concentrated light. Avoid looking directly into the beam.

While working at the ACTIVboard, try to face away from the projector where it is practical to do so. When facing your class, always stand outside the projected beam.



Before cleaning the air filters, ensure that the equipment is switched off and cooled down to an appropriate temperature.

It is recommended that you clean the air filters first thing in the morning, while the equipment is cold.

Compliance

This device complies with Part 15 of the FCC rules. Operation is subject to the following two conditions:

1. This device may not cause harmful interference, and
2. This device must accept any interference received, including interference that may cause undesired operation.

Changes or modifications to this equipment not expressly approved by Promethean may void the user's authority to operate this equipment.

For non-intentional radio parts, this equipment has been tested and found to comply with the limits for a Class B digital device, pursuant to part 15 of the FCC Rules. These limits are designed to provide reasonable protection against harmful interference in a residential installation. This equipment generates, uses and can radiate radio frequency energy and, if not installed and used in accordance with the instructions, may cause harmful interference to radio communications. However, there is no guarantee that interference will not occur in a particular installation. If this equipment does cause harmful interference to radio or television reception, which can be determined by turning the equipment off and on, the user is encouraged to try to correct the interference by one or more of the following measures:

- Reorient or relocate the receiving antenna.
- Increase the separation between the equipment and receiver.
- Connect the equipment into an outlet on a circuit different from that to which the receiver is connected.
- Consult the dealer or an experienced radio/TV technician for help.

For More Information

For more information about ACTIV products, consult the documentation which can be found on the Product CD.

Technical Support

Telephone: 678 762-1500

Email: support@us.prometheanworld.com

Web: www.prometheanworld.com/n-america/en/html/customer_care/contact.shtml

User Forum

We invite new users to join and contribute to our growing online community.

www.prometheanworld.com/forum

Updates

Please visit the Promethean website frequently to check for updated drivers, software, user guides and flipchart resources

www.prometheanworld.com

1. Installing the Software



Promethean recommends that you read the User Guides supplied on the CD for full information about the ACTIVboard system.

Windows users with USB connection, refer to the USB Getting Started Guide for information about installing the drivers.

On a Windows Based Computer

- a. Place the application CD into the CD ROM drive
If Auto Play is enabled, the main menu screen will automatically appear. If Auto Play is not enabled, choose **Start > Run**. In the Run dialog box, type the drive letter that contains the CD and type \menu.exe. For example d:\menu.exe. Then click OK.
- b. Click on the **Manuals** button to access the user guides.
- c. If required, click on the **ACTIVdriver** button and follow the on-screen instructions to install the driver.
- d. Click on the button for your application to launch the installation routine. Follow the on-screen instructions to install the software. Click on the **Exit** button to exit from the menu window.
- e. Remove the application CD and insert the Resources CD in the CD ROM drive.

If the CD does not auto run, follow the instructions in step a. 'If Auto Play is not enabled'. Follow the on-screen instructions to install the Resources.

On a Macintosh Computer

- a. Place the application CD into the CD ROM drive. Shortly you will see a CD icon appear on your Mac Desktop.
- b. Double click on the CD icon.
- c. Double click on the Software Installer icon and follow the on screen instructions to install the software.
- d. Double click on the ACTIVboard Installer icon and follow the on screen instructions to install the drivers.
- e. Place the Resources CD into the CD ROM drive. A CD icon will appear on your Mac Desktop.
- f. Double click on the CD icon.
- g. Double click on the Promethean Resources Installer icon and follow the on screen instructions to install the resources.

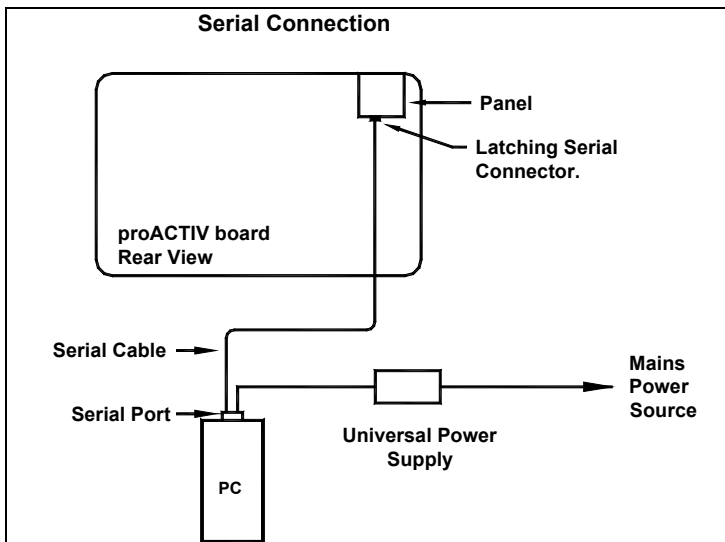
2. Prepare the ACTIVboard



Install software before connecting the board

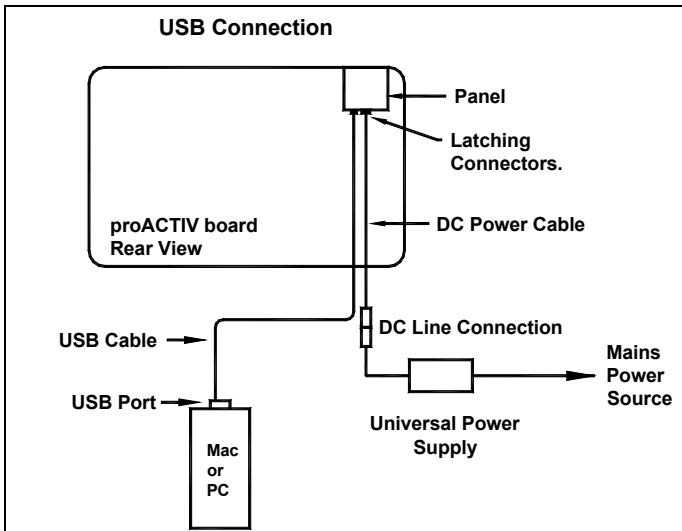
Serial Connection

- Mount the ACTIVboard as described in the User Guide and as detailed in the supplied drawing TP 1443.
- Attach the latching plug-in connector on one end of the serial cable to the socket on the panel located on the rear top right-hand corner of the ACTIVboard.
- Connect the other end of the serial cable to the serial port on your PC.
- Plug the connector on the end of the power lead from the Universal Power Supply into the socket on the back of the serial connector that you just attached to your computer's serial port.
- Plug the Universal Power Supply into your power strip or wall outlet.
- Connect and position your projector according to the instructions supplied with the projector unit.



USB Connection

- a. Mount the ACTIVboard as described in the User guide and as detailed in the supplied drawing TP 1443.
- b. Attach one end of the USB cable to the USB socket on the panel, located on the rear top right-hand corner of the ACTIVboard. Attach the other end of the USB cable to a free USB port on your computer.
- c. Attach the latching connector on one end of the DC power cable to the socket on the panel, located on the rear top right-hand corner of the ACTIVboard.
- d. Plug the other end of this DC power cable into the DC connector on the end of the DC power lead of the Universal Power Supply.
- e. Plug the Universal Power Supply into your power strip or wall outlet.
- f. Connect and position your projector according to the instructions supplied with the projector unit.

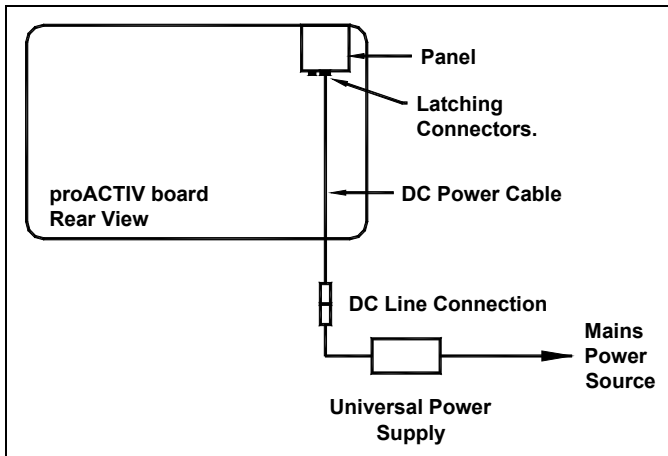


Connection enabled via Bluetooth Wireless Technology



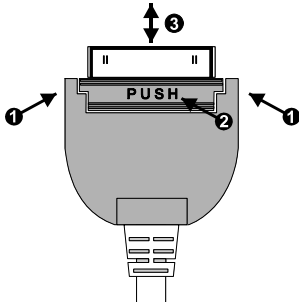
The minimum Operating System requirements for connectivity with Bluetooth wireless technology are:

- **Windows XP SP2 or later.**
 - **Macintosh OSX 10.4 or later.**
- a. Mount the ACTIVboard as described in the User guide and as detailed in the supplied drawing TP 1443.
 - b. Attach the latching connector on one end of the DC power cable to the socket on the panel, located on the rear top right-hand corner of the ACTIVboard.
 - c. Plug the other end of this DC power cable into the DC connector on the end of the DC power lead of the Universal Power Supply.
 - d. Plug the Universal Power Supply into your power strip or wall outlet.
 - e. Connect and position your projector according to the instructions supplied with the projector unit.



Note about the latching connector

Do not bend or twist the latching connector when connecting or disconnecting the cable into the panel, located at the rear of the ACTIVboard. The ACTIVboard may not work properly if the contacts inside the connector become damaged. See the instructions below for the recommended installation method:



- 1 Support the sides of the connector with your thumb and forefinger of one hand.
- 2 Push with the forefinger of your other hand.
- 3 Take care to line up the latching connector with the connector inside the panel before attempting to connect the cable. When disconnecting the cable, keep the connector straight.

Ensure that the strain relief cable clips, which are located below the panel on the rear of the ACTIVboard, are used to support the cable(s).

3. Prepare the ACTIVboard for Bluetooth Connectivity

If you are using a recommended Bluetooth adaptor make sure the adaptor is plugged in before you begin.

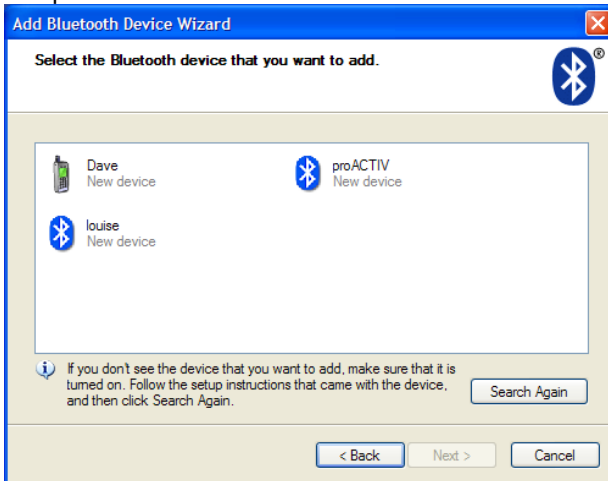
If your computer has built in Bluetooth capability, make sure that it is turned on.

On a Windows Based Computer

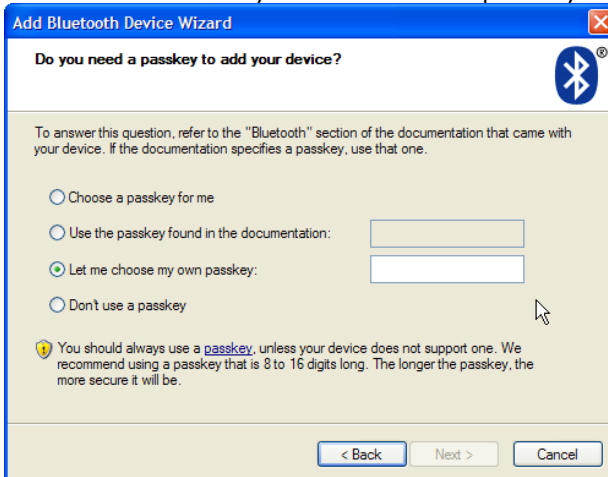
Establish Bluetooth Connection

- a. If your computer has built in Bluetooth connectivity, make sure that it is turned on. Alternatively, connect a Bluetooth adapter to your computer according to the manufacturer's instructions.
- b. Make sure the ACTIVboard is switched on and the logo in the top left corner is illuminated.
- c. On the taskbar, right-click the Bluetooth icon .
- d. From the menu that appears select **Add a Bluetooth Device**.
- e. The Add Bluetooth Device Wizard starts.
- f. Select the checkbox to confirm that the ACTIVboard is set up and ready to be found.
- g. Click Next. The wizard searches for Bluetooth devices in range of your computer.

- h. The wizard will display a list of all the devices it has found. Select the proACTIV icon.



- i. Click Next.
- j. The wizard asks 'Do you need to add a passkey to your device?'



Select **Let me choose my own passkey.**

- k. Enter a passkey of 0000.
- l. Click Next. When the wizard has established a connection, it will assign an outgoing COM port number. Make a note of the COM port number.

- m. Your computer is now paired to the ACTIVboard.

If the COM port number is greater than 8, the ACTIVdriver will not work. To allocate a number between 1 and 8, follow these steps:

- a. On your desktop, right-click on My Computer.
- b. Select **Properties**. The System Properties dialog box appears.
- c. Select the **Hardware** tab.
- d. Click **Device Manager**. The Device Manager dialog box appears.
- e. Select the **Ports (COM & LPT)** branch. The branch expands to show a sub-branch for each port.
- f. Right-click on the COM port that has been assigned to the ACTIVboard.
- g. From the menu that appears, select **Properties**. The properties sheet for the selected COM port appears.
- h. Select the **Port Settings** tab.
- i. Click **Advanced...** The Advance Settings dialog appears.
- j. Select a port number between 1 and 8.
- k. Click OK.

Connect to the ACTIVboard

- a. Position the ACTIVpen over the illuminated flame, located in the top left hand corner of the board. At the same time, hold down the barrel button on the ACTIVpen. The illuminated flame on the board will flash blue for 2 minutes.
- b. Within the 2 minute time limit, return to your computer and start the ACTIVdriver.

Start the ACTIVdriver

- a. Right click on the **ACTIVcontrol** icon, located in the taskbar and select **Configure**. The ACTIVcontrol window will open.



- b. From the list, select the COM port which has been assigned to the Bluetooth connection.
- c. Click **Start**. When connected the illuminated flame on the ACTIVboard will glow blue and the status in the ACTIVcontrol dialog will change to Running. Your computer is now connected to the ACTIVboard via Bluetooth.
- d. Click **OK** to close the ACTIVcontrol window.

When the connection is set up correctly, the board will stay in wireless mode. When you restart your PC in range of the board, it will automatically reconnect and you will have wireless interaction.



If your computer does not connect automatically, follow these steps:

Hover the ACTIVpen over the illuminated logo and hold the barrel button until the illuminated flame turns blue.

Then repeat the procedures for 'Connect to the ACTIVboard' and 'Start the ACTIVdriver', as described above.

Name the ACTIVboard.

- a. Make sure your computer is connected to the ACTIVboard using Bluetooth.
- b. Start ACTIVstudio or ACTIVprimary.
- c. From the main menu, select **Name Bluetooth Board**.
- d. Type the name of your ACTIVboard in the box.

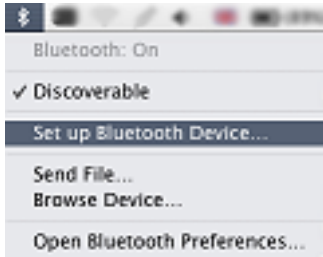
On a Macintosh Computer



The following instructions are for Tiger OSX 10.4 only.

Set up the device

- a. Click on the Bluetooth Icon in the top menu bar, and select **Set up Bluetooth Device...**



- b. The **Bluetooth Setup Assistant** window will open. Click **Continue**.
- c. A list of devices will be displayed. Select **Other Device** then **Continue**.
- d. Your Mac will now search for and list all devices that are in range. Select ProACTIV.
- e. Click **Passkey Options**. The Passkey Options dialog appears.
- f. Select **Use Specific Passkey**. Click **OK**.
- g. Now position the ACTIVpen over the illuminated flame at the top right corner of the ACTIVboard. At the same time, hold down the the barrel button on the ACTIVpen. The illuminated flame will flash blue for 2 minutes.
- h. Return to your computer and click Continue.
- i. In the passkey box type **0000**.
- j. Click Continue. The device is now set up.
- k. Click on the red **Close** button, located in the top left-hand corner of the window.
- l. The illuminated flame on the board will stop flashing and change to a solid blue. You now have wireless interaction enabled with Bluetooth Technology.

When the connection is setup correctly, the board will stay in wireless mode. When you restart your Mac in range of the board, it will automatically reconnect and you will have wireless interaction.

If you have any connection issues, perform the following procedure:



- 1. On the menu bar, click the Bluetooth icon.**
- 2. Select Open Bluetooth Preferences. The Bluetooth Preferences dialog appears.**
- 3. Select the Devices tab.**
- 4. Select the proACTIV device and click Delete.**
- 5. Hover the ACTIVpen over the illuminated logo and hold the barrel button until the illuminated flame turns white.**

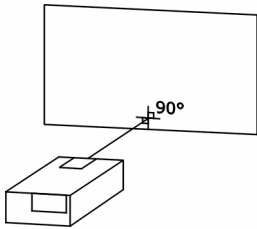
Then repeat the procedures as described in 'Set up the device' on page 16

Name the ACTIVboard

- a. Make sure that your computer is connected to the ACTIVboard using Bluetooth.
- b. Open System Preferences.
- c. Select **ACTIVboard**.
- d. From the **ACTIVboard** menu, select the **Hardware** tab. The name of the ACTIVboard that you are connected to is displayed in the menu box.
- e. To rename the ACTIVboard, double click on the name and enter a different one.
- f. Click OK.

4. Calibrate the ACTIVboard

The projected image needs to be aligned with the computer screen image (orthographic correction).



- a. Ensure the projected image fits within the edge strip on the ACTIVboard
- b. Hold the pen tip for two seconds over the centre of the illuminated logo, located in the top left hand corner of the ACTIVboard.
- c. Click on the board with the pen when you are prompted to do so. Five crosses will appear on screen in succession.
- d. Click accurately on the centre of each cross in turn. The calibration utility will automatically close, the system is now calibrated.

5. Launch the Software

On a Windows Based Computer

- a. Double click on the program icon on your desktop.
or
- b. Click on the **Start > Programs > ACTIV Software** group.
- c. Within the ACTIV Software group, select the **ACTIVprimary2** or **ACTIVstudio2** program group.
- d. Within the program group, locate and then click on the **ACTIVprimary2** or **ACTIVstudio2** icon.
- e. Enter your information and serial number, which is located on your Installation CD case (required first time only).

On a Macintosh Computer

- a. In the Applications folder, open the Promethean programs folder.
- b. Open the ACTIVstudio2 or ACTIVprimary2 folder.
- c. Double click on the program icon.
- d. Enter your information and serial number, which is located on your Installation CD case (required first time only).

Refer to the help file for information about using the software. To access the ACTIVstudio help, click on **Menu > Help....**To access the ACTIVprimary help, click on **Teacher Tools Menu > Menu > Help...**



Promethean Technologies Group Limited
1165 Sanctuary Parkway,
Suite 400 Alpharetta,
GA 30004
Tel: (888) 652-2848
Fax: (678) 762-7700
www.prometheanworld.com