

CEM SYSTEMS

PCB/TSR/009
COPYRIGHT 2014

1075315-0005
CCT/705/009
BOM V9.10

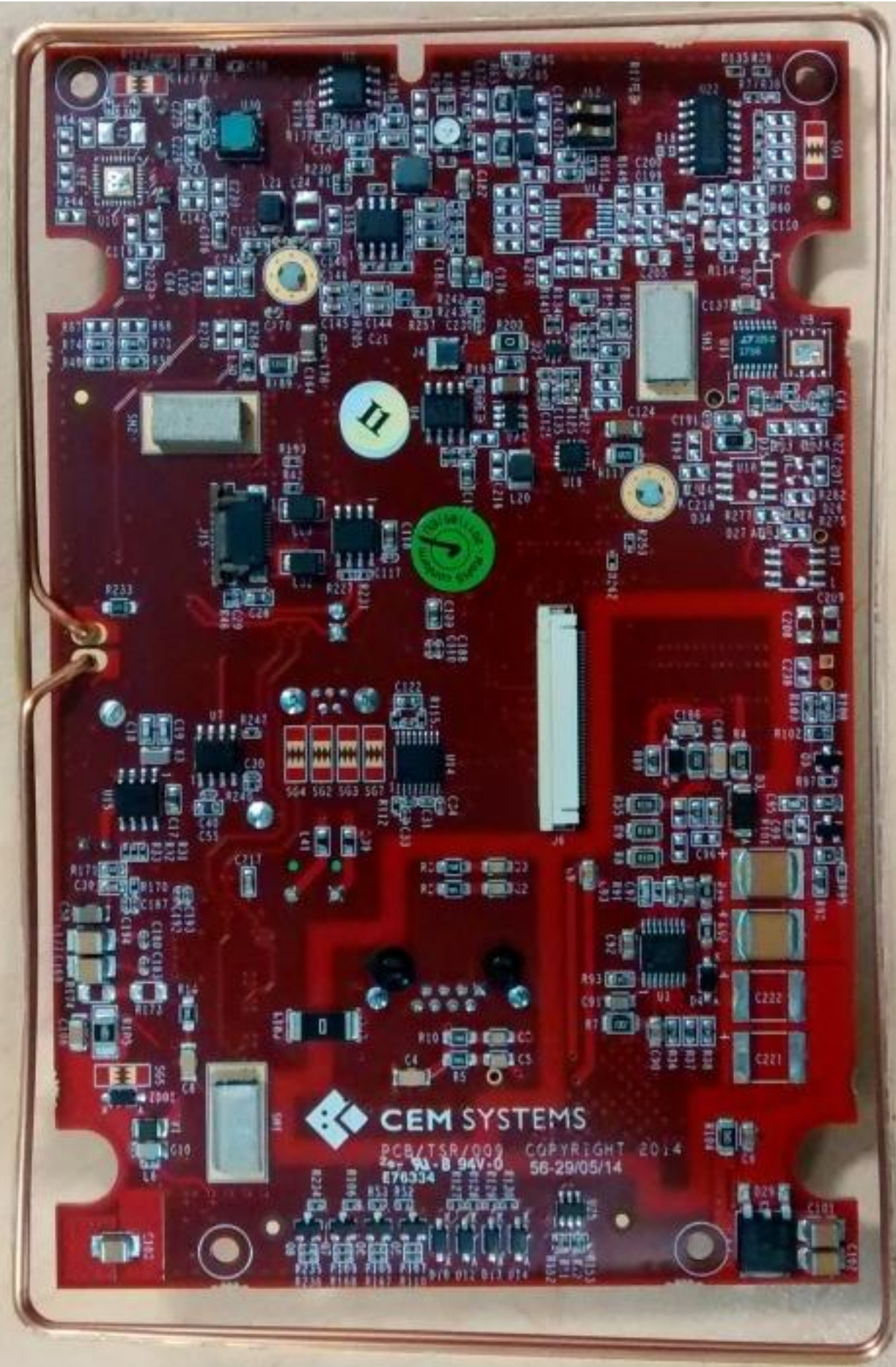
900-AL
craft
20 D
MAIN-V9

181
COM

47
KFK
2K4

AV
CD
330

330
CF
2L2



CEM SYSTEMS

PCB/TSR/009 COPYRIGHT 2014
9A-B 94V-0 56-29/05/14
876334

The PCB is densely populated with components. Key components include:
- Numerous resistors (R1 through R100+) and capacitors (C1 through C100+).
- Several integrated circuits (ICs) and microchips.
- A large multi-pin connector on the right side.
- A green circular sticker in the center.
- Various surface-mount components and through-hole components.
- The board is populated with components from various manufacturers, including Texas Instruments (TI) and Analog Devices (AD).



118

0017-8006-00 00 00
00 30 4E 02 A4 00

CEM SYSTEMS

PCB/TSR/009
COPYRIGHT 2014 TMS

1075315-0005
CCT/705/009
BOM V9.10

300-AL
MAIN-V0
20 D

118



I20

IO BOARD
CCT/710/005 1075185-0006
BOM V5.01



CEM Systems
Copyright. 2014

PCB/710/005

J19

J17

- 2 RS485 A
- 2 RS485 B
- RS232 RX
- 0V
- SOUNDER
- LED GREEN
- LED AMBER
- LED RED
- D1
- D0

- DOOR POS
- LOCK POS
- REX
- INTERLOCK
- 0V

- 1 RS485 A
- 1 RS485 B
- RS232 TX
- 3 RS485 A
- 3 RS485 B

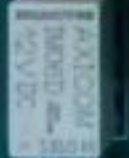
INT EXT

EXT

INT - FOR 12V PROVIDED OUTPUT
EXT - FOR SPDT RELAY OUTPUT

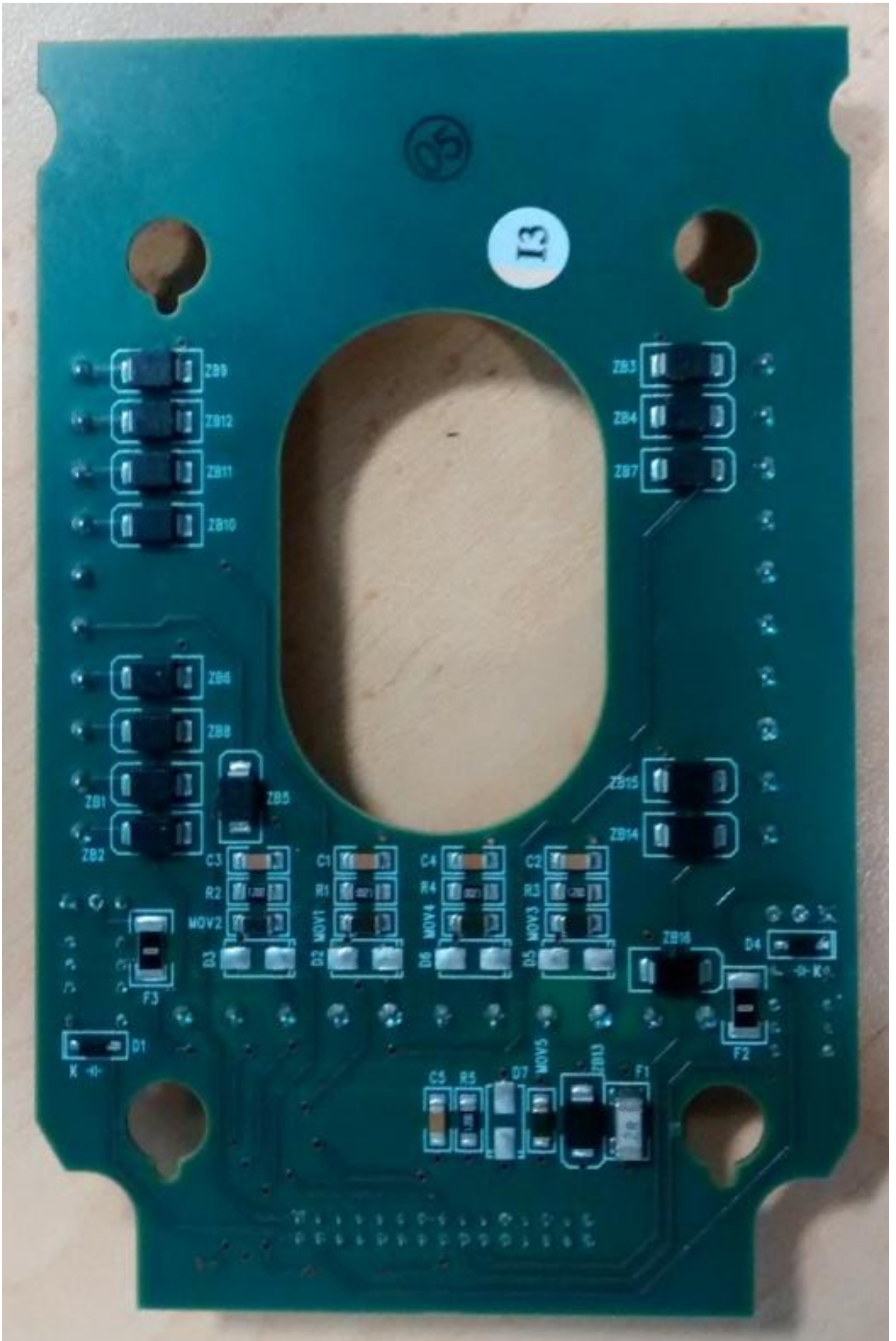
RELAY1 RELAY2

12V 0V NO C NC 0V NO C NC 0V 12V



J20





13



ZB9
ZB12
ZB11
ZB10

ZB3
ZB4
ZB7

ZB6
ZB8
ZB1
ZB2
ZB5

ZB15
ZB14

C3
R2
MOV2
D3
D2 MOV1
R1
C1
C4
R4
MOV4
D6
C2
R3
MOV3
D5

D1

D4
F2

C4
R5
D7
MOV5
ZB13
F1

PCB POPULATED



0312-6006-02 R0.90



00:30:46:02:A4:GG

I 18

1712-6006-02 REVA0

0312-6006-02 REV

