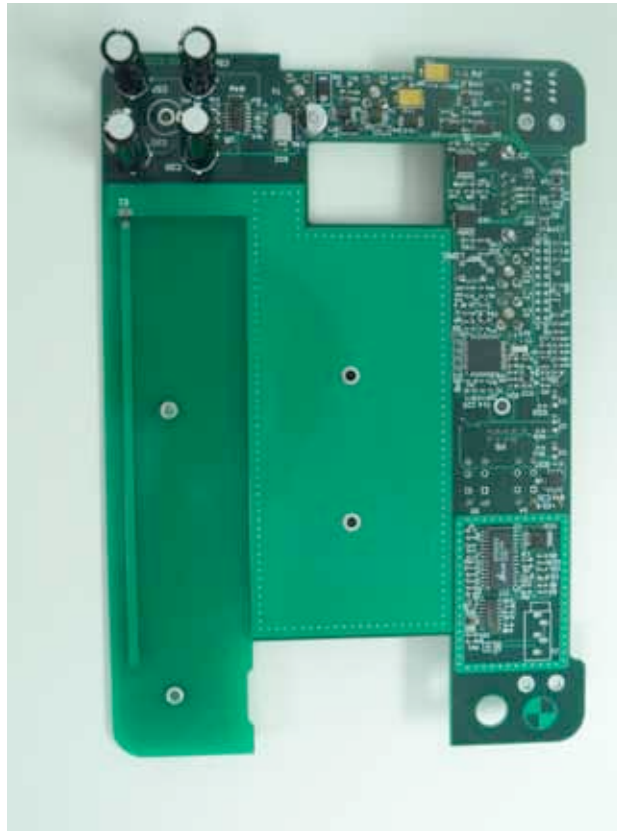
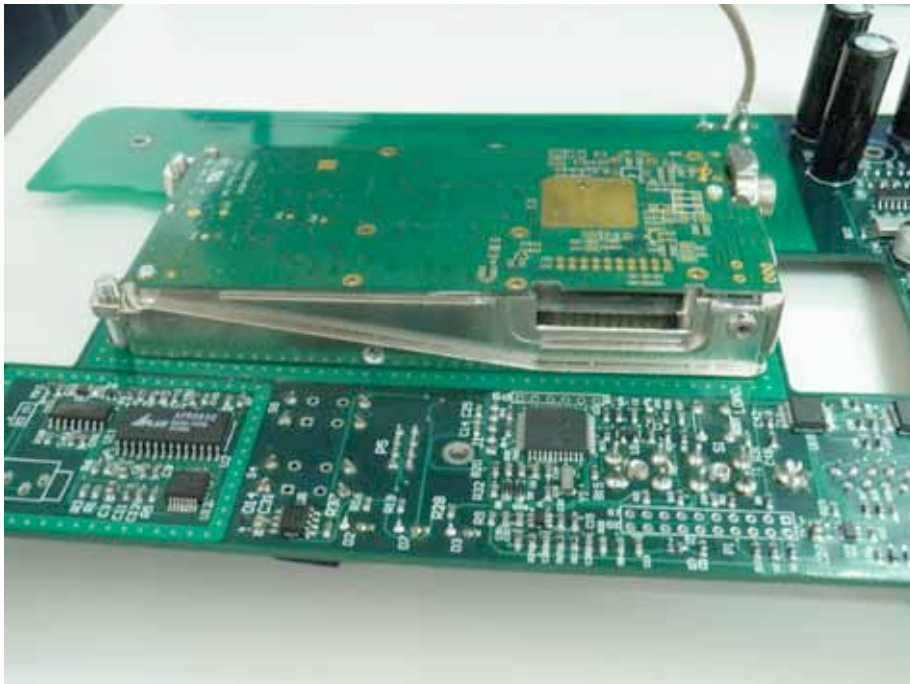


User Manual

Installation:



(Fixed on the board location)



(Fixed Sample)

The module was fixed on the mainboard by four screws, such as the sample photo.

Specification:

- UHF 450-470Mhz
- Screw antenna connection.
- 2/0.25 watt output power, Hi/low selectable per channel through PC programming.
- CTCSS
- DCS
- Comanding ON/OFF through programming.
- 8 channels selectable via 4 logic pins.
- Voice/data selectable through programming.
- Audio output (voice/data).
- Audio input (voice/data).
- 12.5 channel spacing.
- Ability to program radio from our Broadcaster or Instant Assistant product. It would be necessary for Alltronics to provide us with the command strings and protocol.
- Transmitter to be suitable for voice and POCSAG. (1200 bps Alphanumeric.)
- In standby mode:
 - When turned on, the transmitter and receiver will work.
 - When turn off, either the receiver or transmitter will work depending on programming.
 - LD-520P is a simplex-system radio. Must be repeater compatible.
 - Choose ON/OFF by sending command.
- RS232 data interface for programming.
- Transmite Current no more than 1200mAh
- Work Volts 7.5V

FCC Note:

The module is for fixed or mobile use only and cannot be used for portable use.

The antenna(s) used for this transmitter must be installed to provide a separation distance of at least 20 cm from all persons and must not be co-located or operating in conjunction with any other antenna or transmitter. Licensing for Part 90 use must be addressed in the manual.