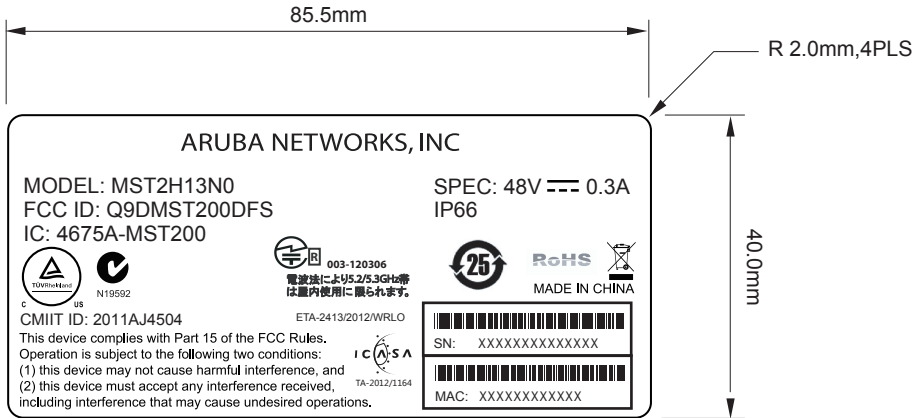
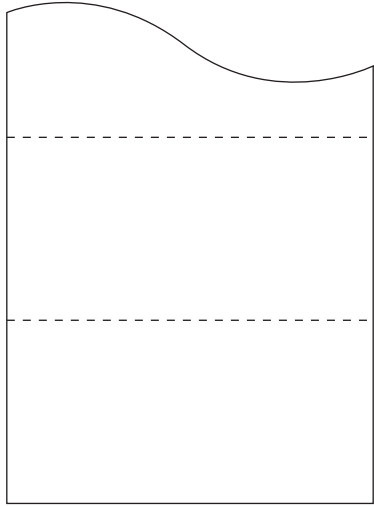


PART NUMBER BLOCK	
PART NUMBER	REV
4011388	01

REVISIONS			
REV	DESCRIPTION	DATE	APPROVED
01	Added South Africa ICASA, updated Japan, updated TUV mark	4/22/13	Anh-Thu



- NOTES:
- MATERIAL: SILVER MATT PET,T=0.05, BACKSIDE ADHESIVE MATERIAL
 - COLOR:
 - COLOR OF BASE: MATERIAL PRIMARY
 - COLOR OF FONT: BLACK
 - TEMPERATURE RESISTANT= 80°C.
 - ADHESIVE THICKNESS=0.024±0.003mm.
 - UL APPROVED INK & MATERIAL
 - REQUIREMENT FOR ADHESIVE GLUE: 3M-467
 - Barcode Font: Code 39

		UNLESS OTHERWISE SPECIFIED ALL DIMENSIONS ARE IN mm AND TOLERANCES ARE:			
		INTEGRAL DIMENSIONS ± 0.5 1 PLACE DECIMAL ± 0.3	ANGULAR DIMENSIONS ± 2° HOLES UNDER φ 5.00 ± 0.2		
		MATERIAL: SEE NOTES		LABEL,AGENCY,MST2HP	
		FINISH: SEE NOTES		SIZE A4 DWG NO. 4011388	
NEXT ASSY		THIRD ANGLE PROJECTION	DRAWN	REV 01	
USED ON			ENGR	SCALE 1/1 SHEET 1 OF 1	
APPLICATION			APVD		