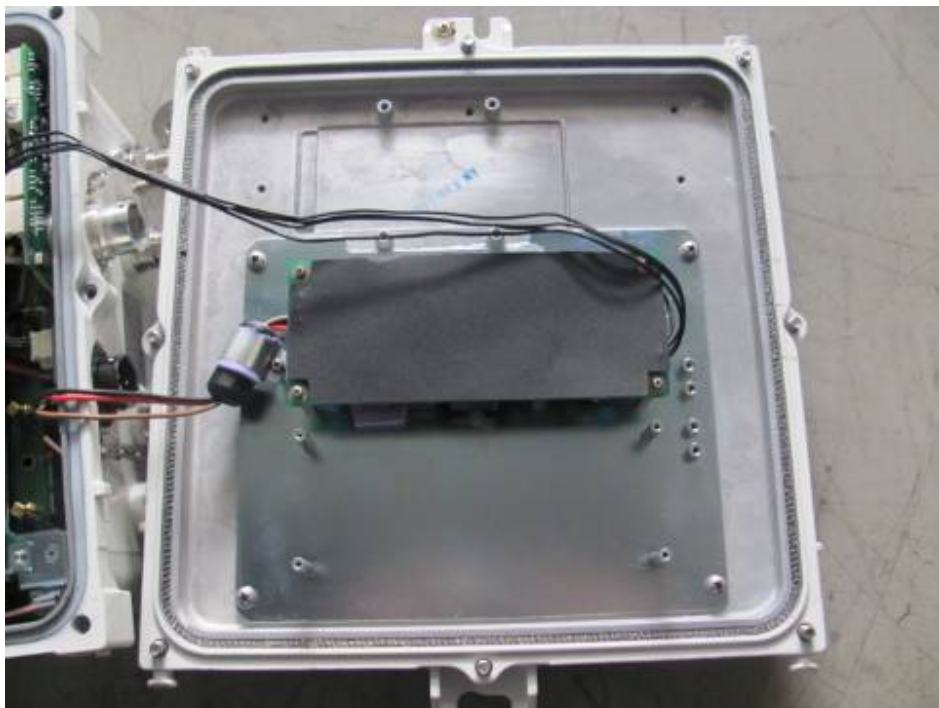
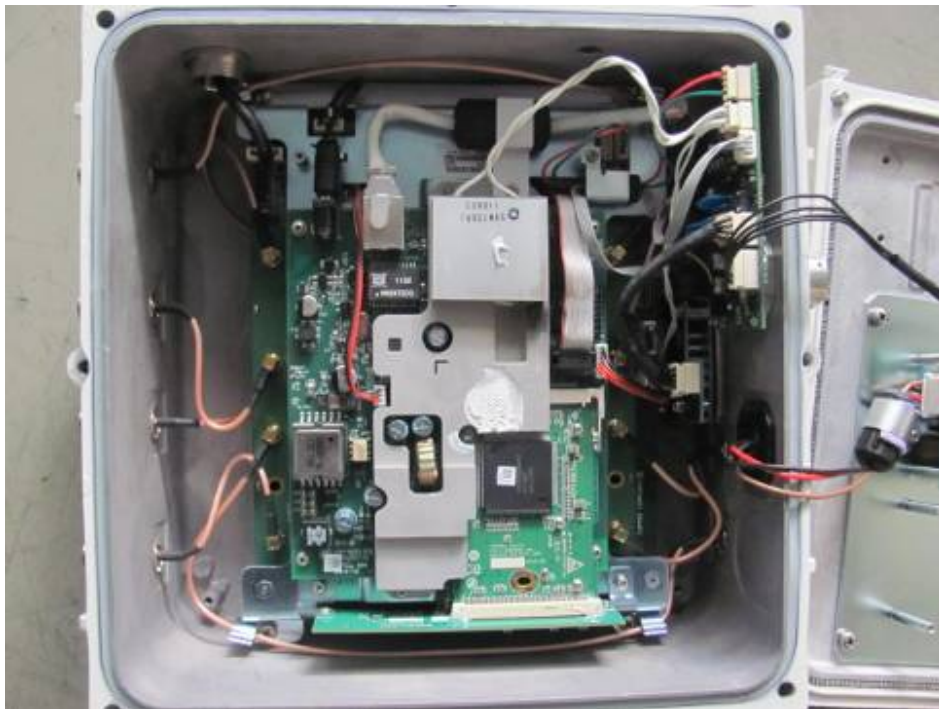




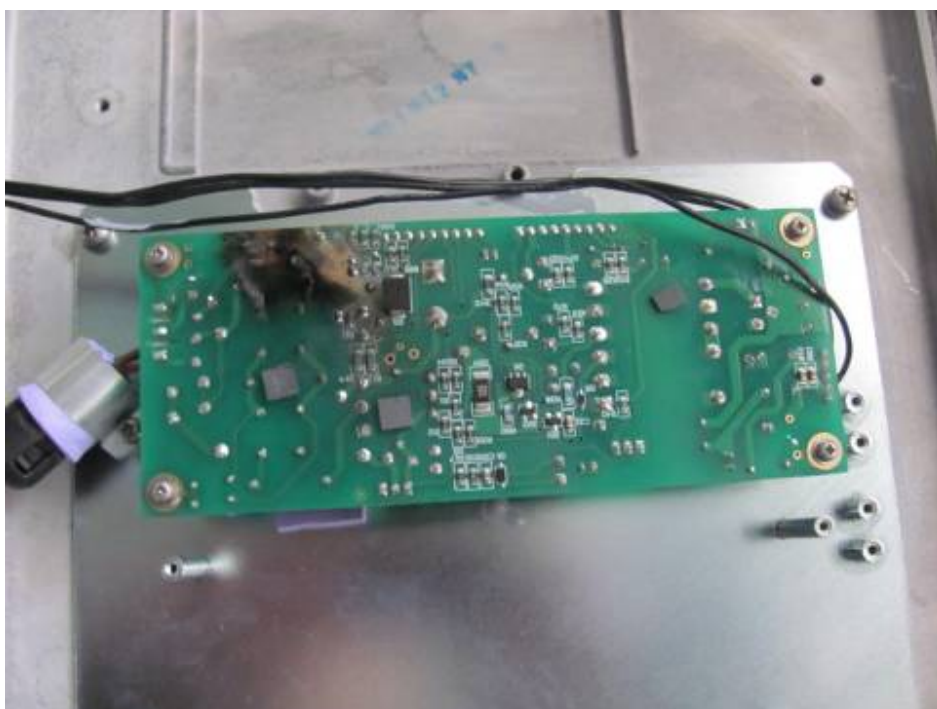
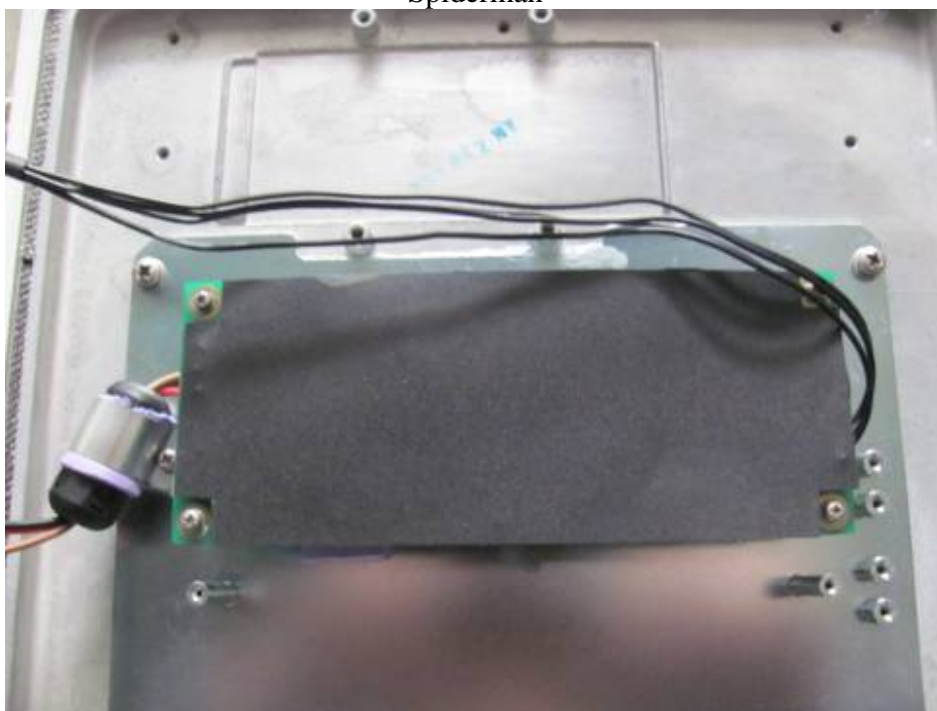
FCC ID: Q9DMSR4000AC
IC: 4675A-MSR4000AC

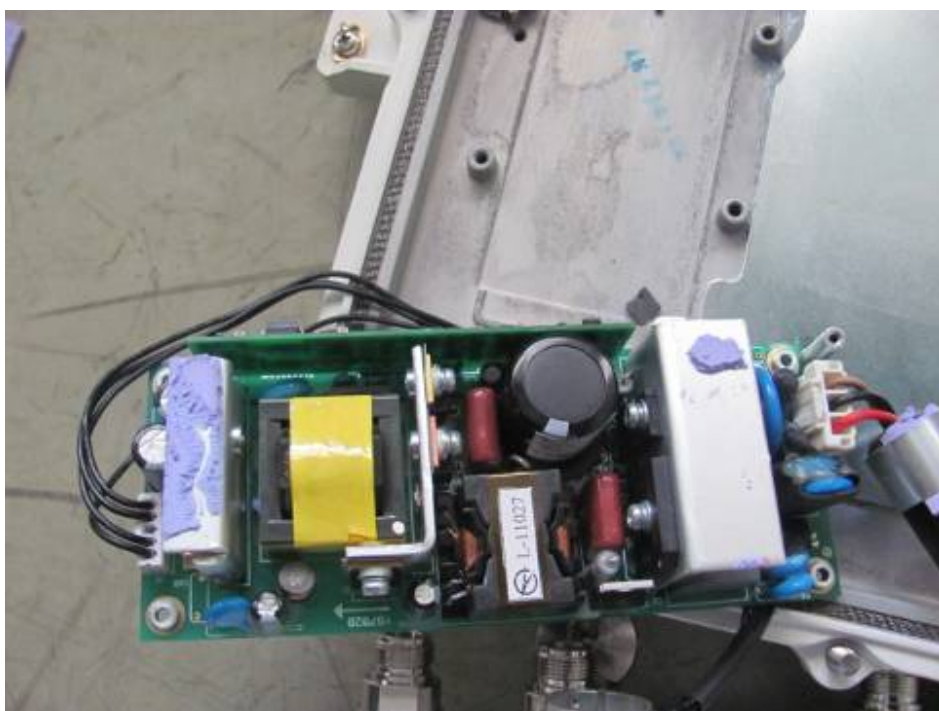
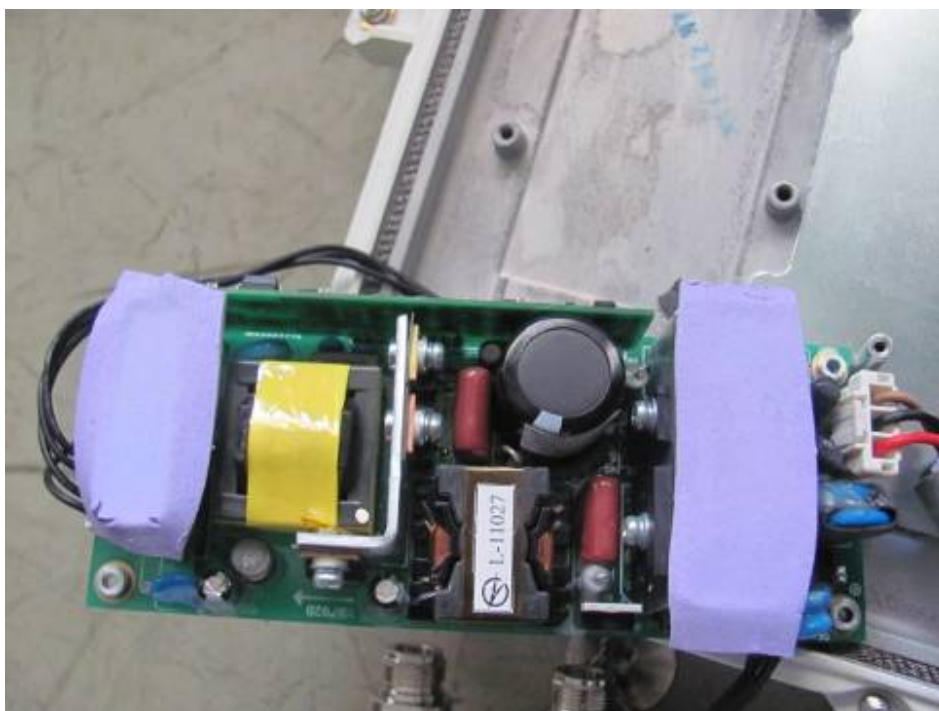
Internal Picture

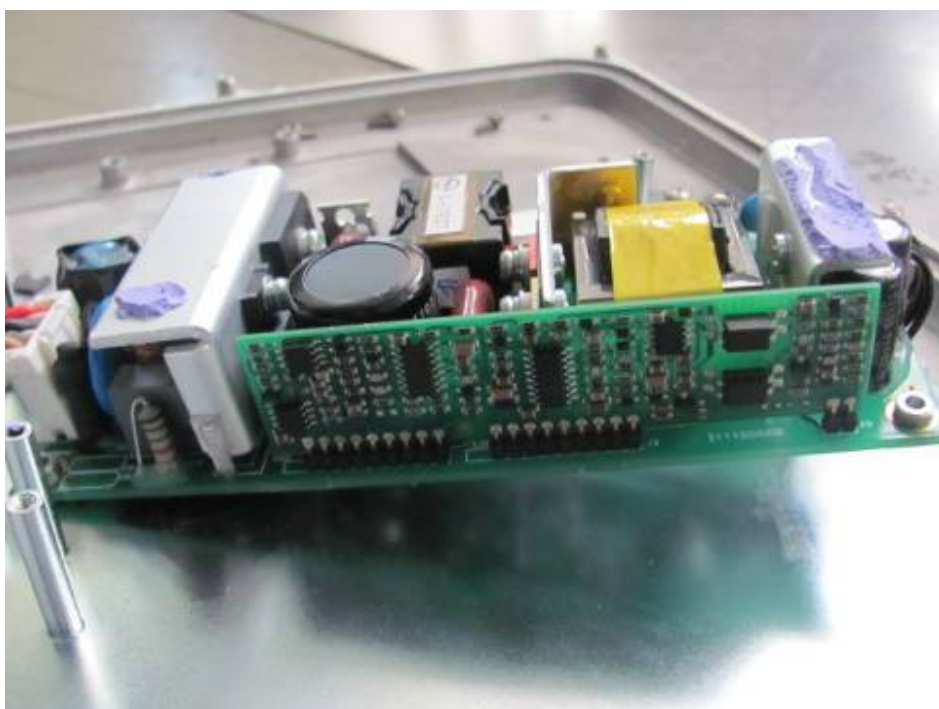
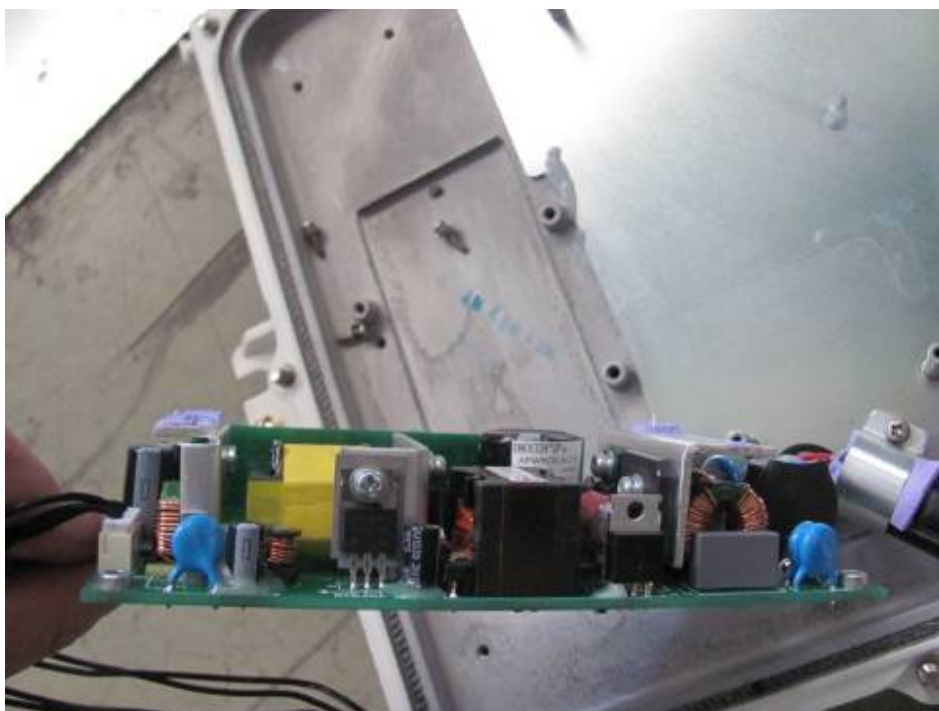
Overview for inside EUT



Spiderman

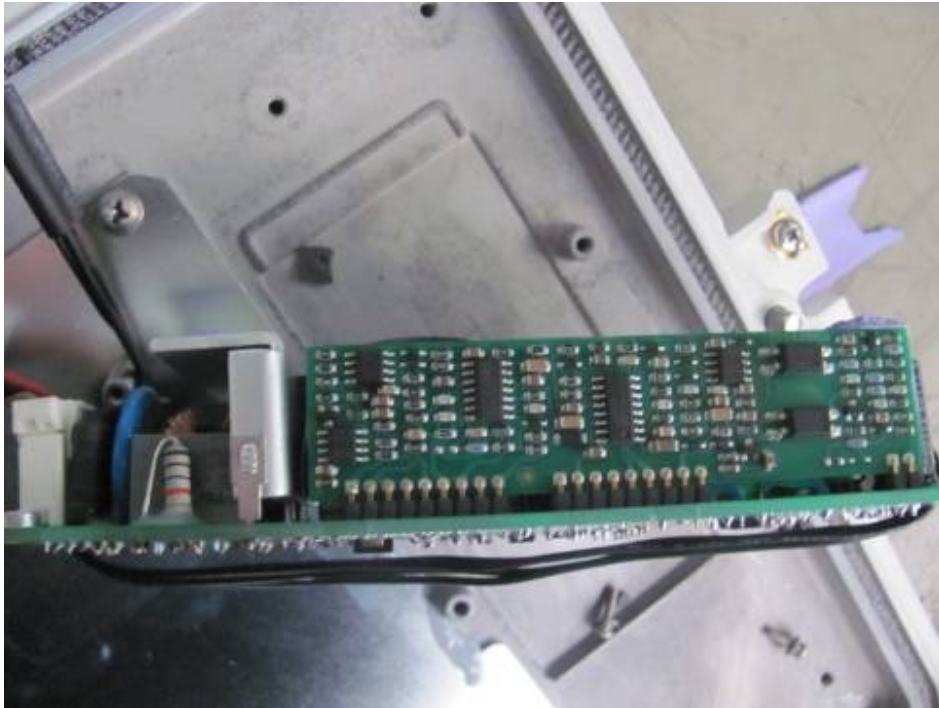






Intertek

**FCC ID: Q9DMSR4000AC
IC: 4675A-MSR4000AC**



BlutemPSE





FCC ID: Q9DMSR4000AC
IC: 4675A-MSR4000AC



Main board + TRIBRI





FCC ID: Q9DMSR4000AC
IC: 4675A-MSR4000AC

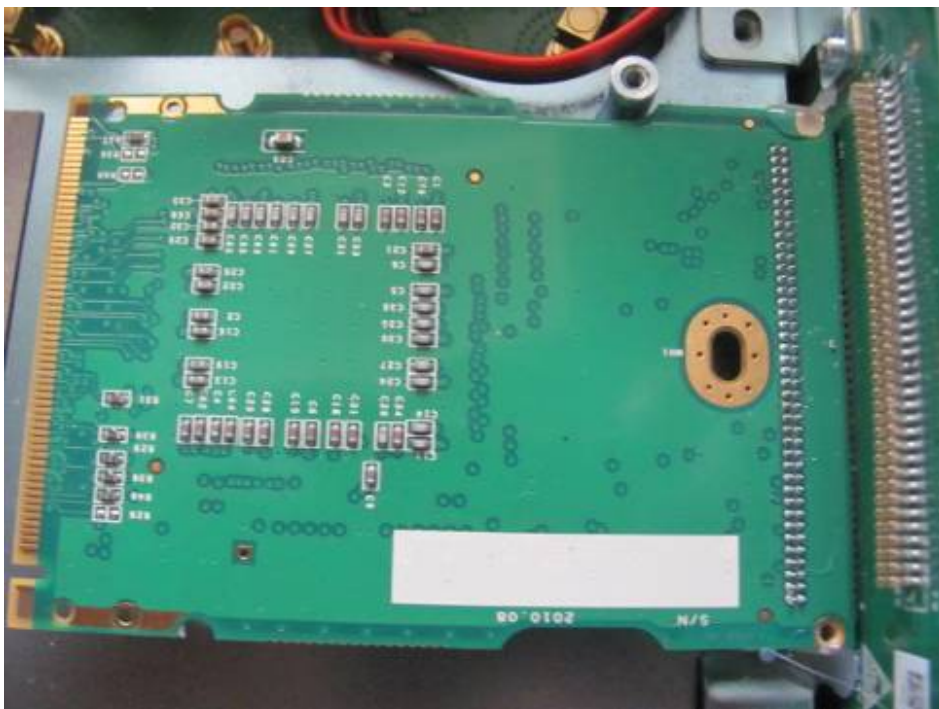
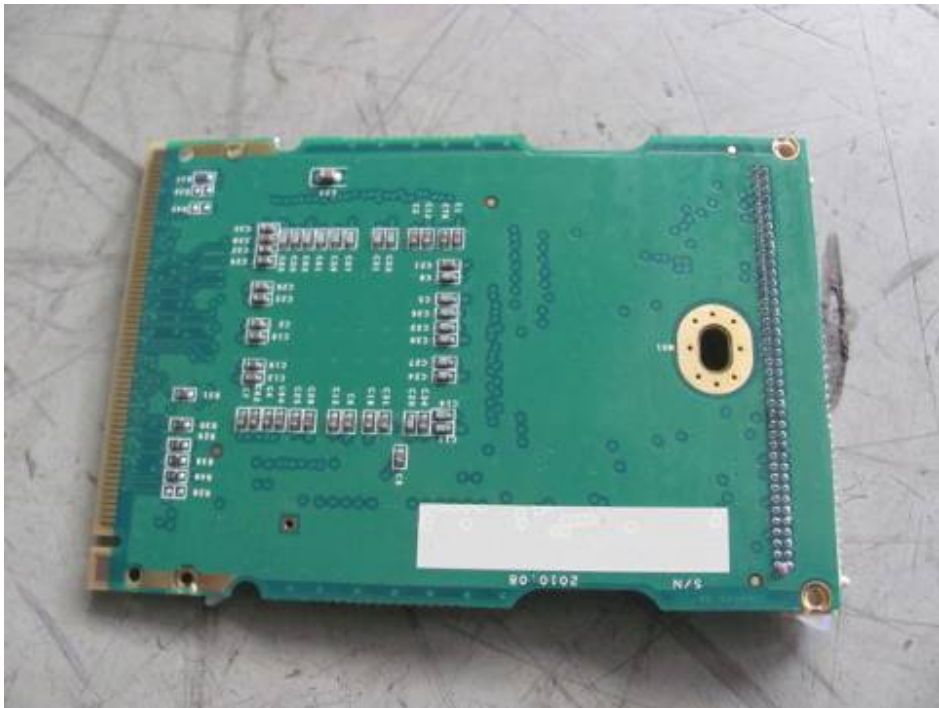


TRIBRI





FCC ID: Q9DMSR4000AC
IC: 4675A-MSR4000AC





FCC ID: Q9DMSR4000AC
IC: 4675A-MSR4000AC





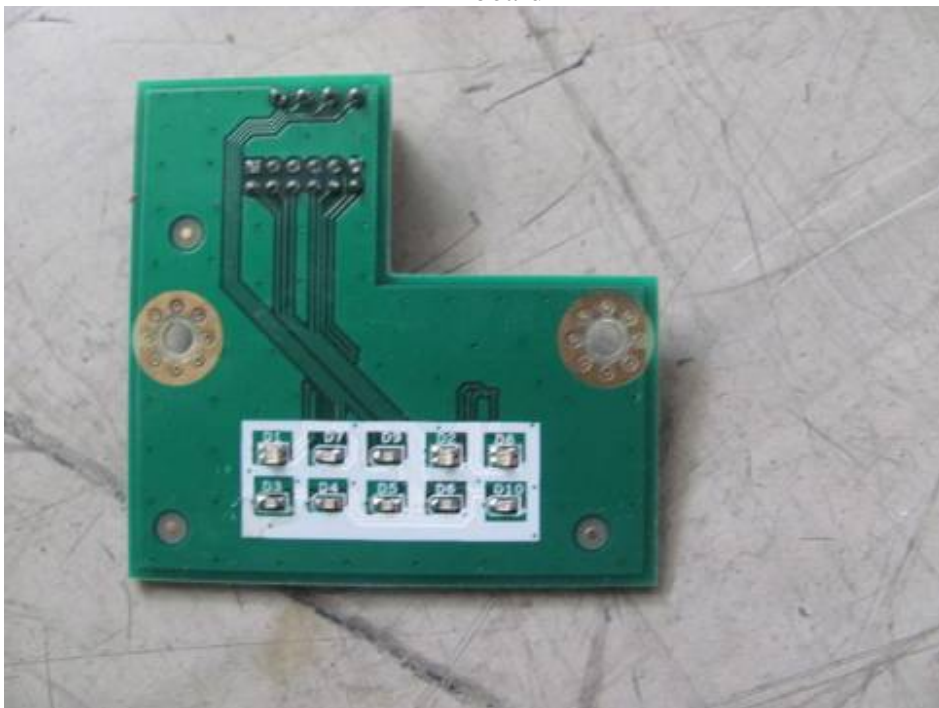
FCC ID: Q9DMSR4000AC
IC: 4675A-MSR4000AC

Main board





LED board

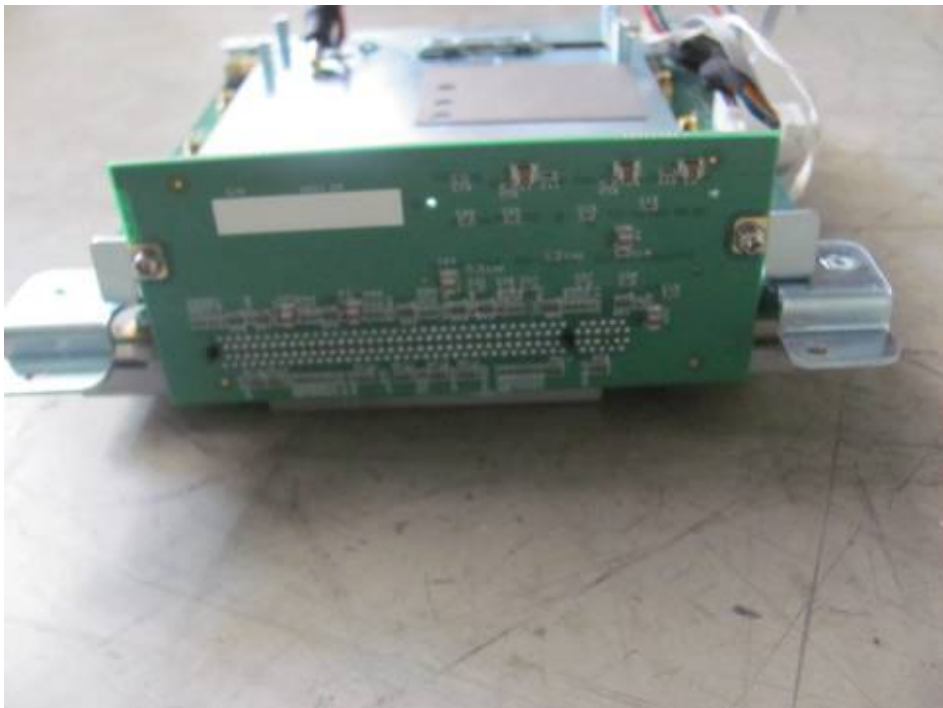


Intertek

**FCC ID: Q9DMSR4000AC
IC: 4675A-MSR4000AC**



Tribac





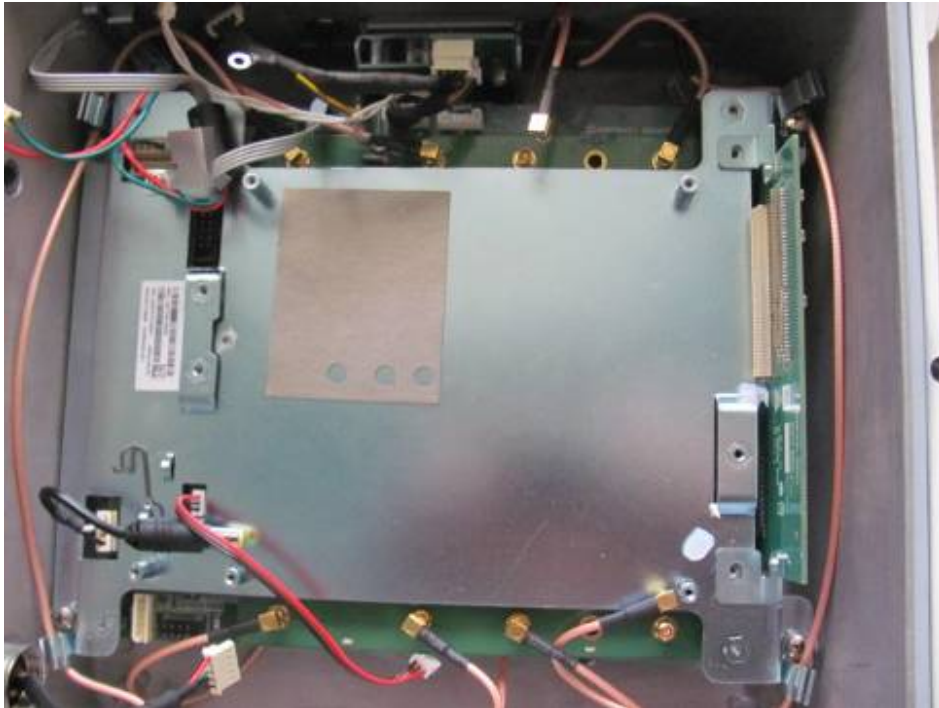
FCC ID: Q9DMSR4000AC
IC: 4675A-MSR4000AC





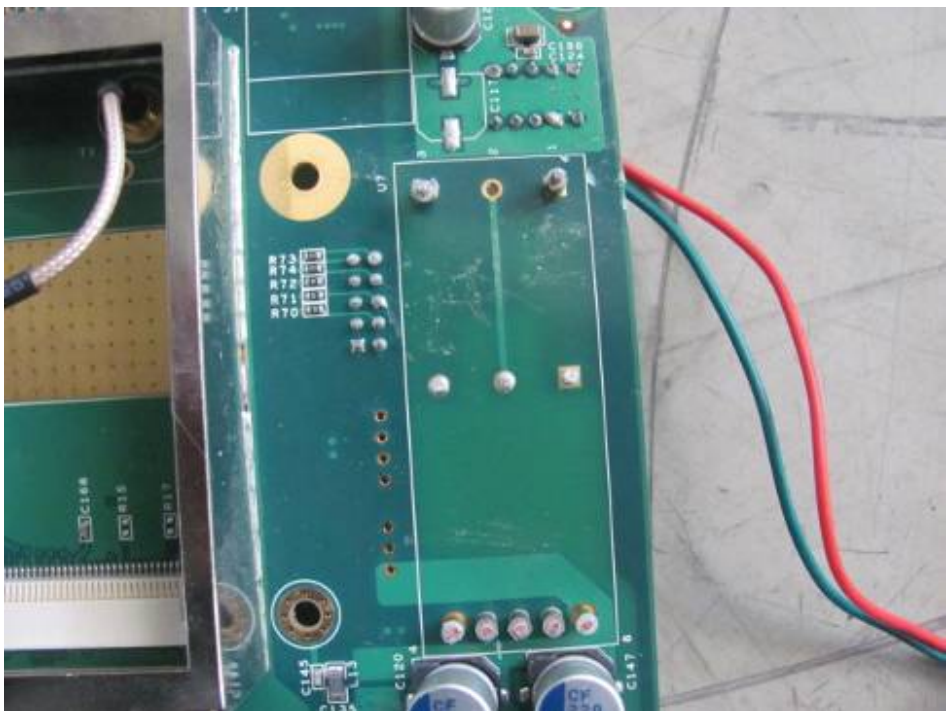
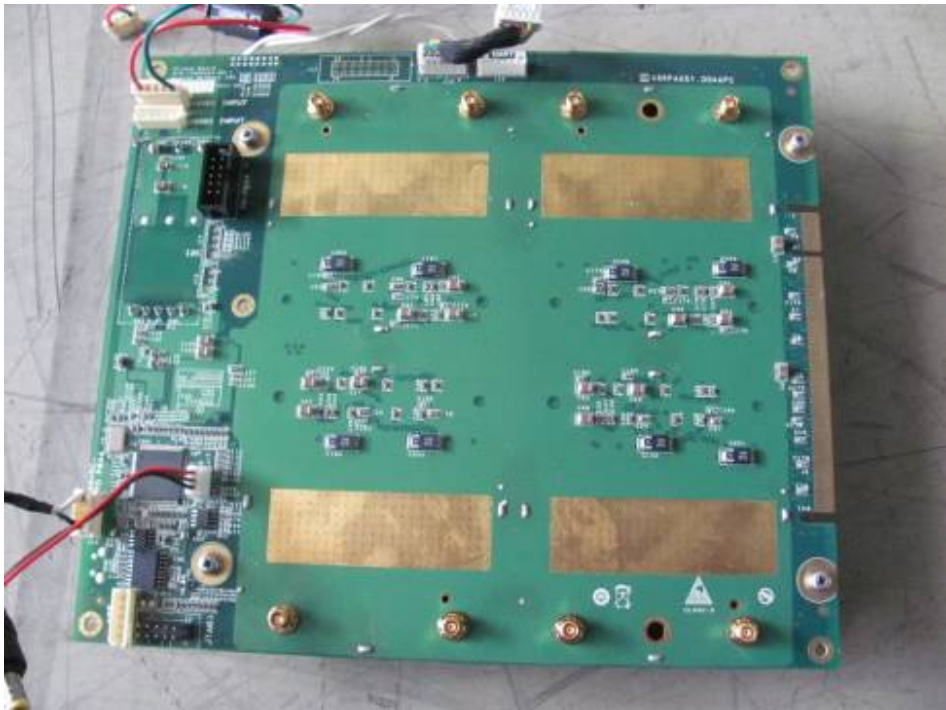
FCC ID: Q9DMSR4000AC
IC: 4675A-MSR4000AC

TriEXP



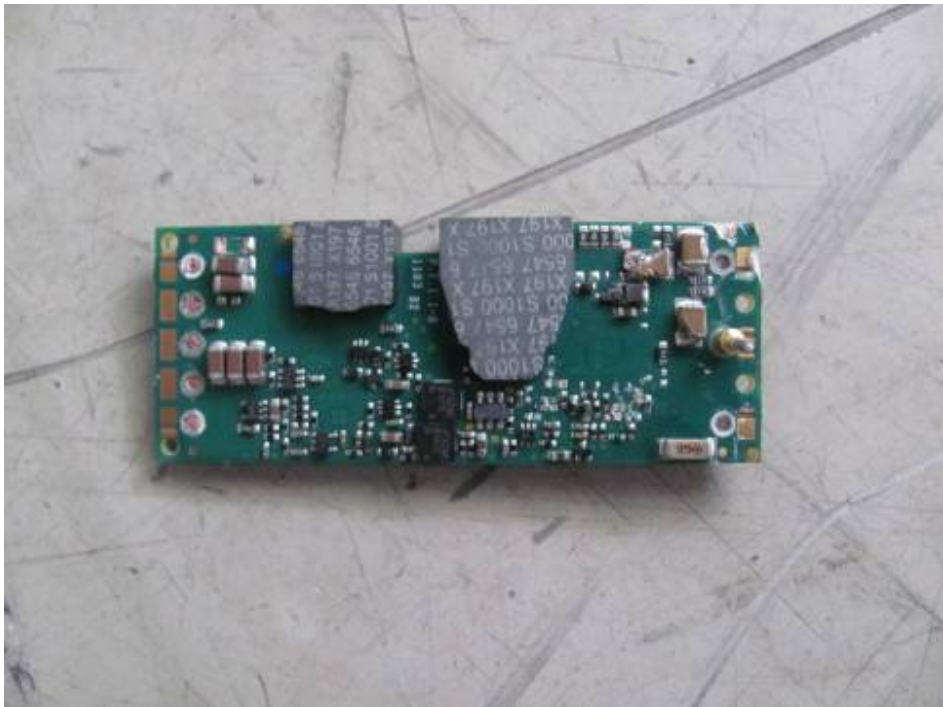
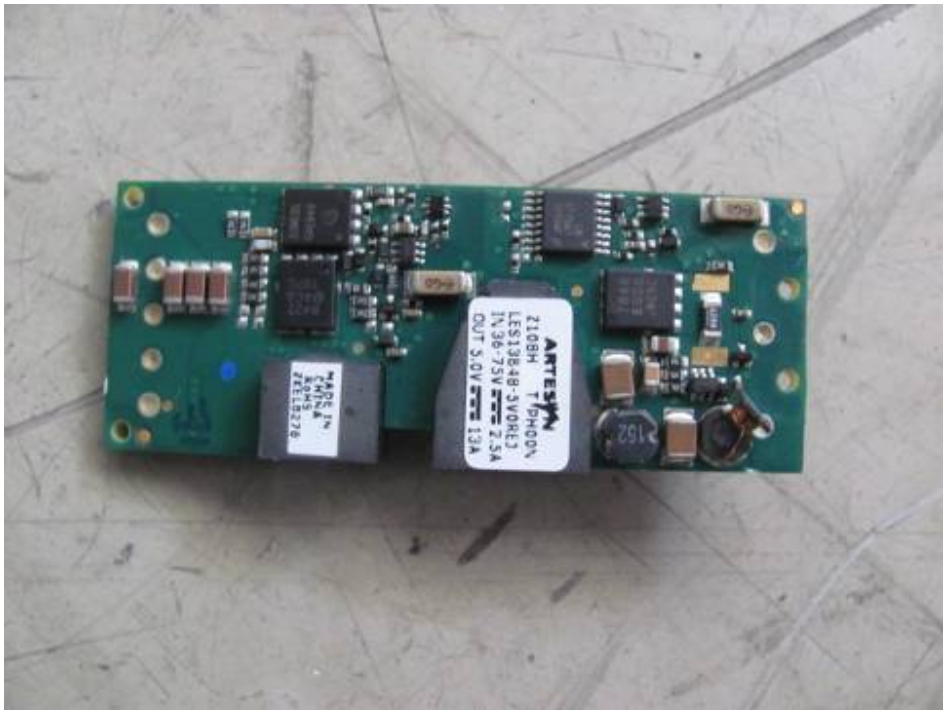


FCC ID: Q9DMSR4000AC
IC: 4675A-MSR4000AC



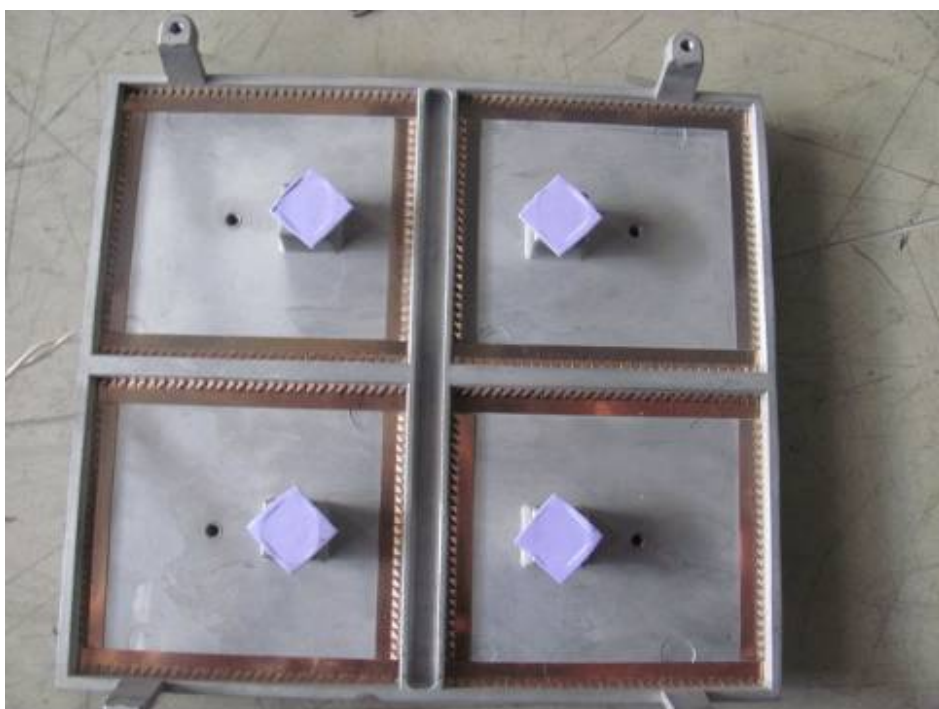


FCC ID: Q9DMSR4000AC
IC: 4675A-MSR4000AC



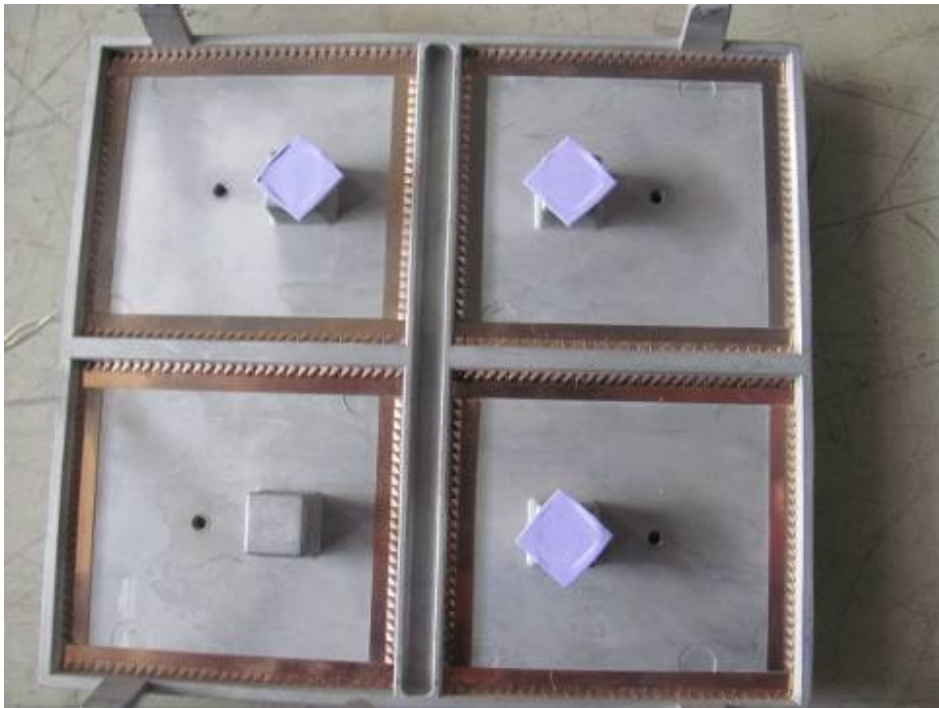
Intertek

FCC ID: Q9DMSR4000AC
IC: 4675A-MSR4000AC





FCC ID: Q9DMSR4000AC
IC: 4675A-MSR4000AC



Ttiexp board + RF cards





FCC ID: Q9DMSR4000AC
IC: 4675A-MSR4000AC

RF cards





FCC ID: Q9DMSR4000AC
IC: 4675A-MSR4000AC





FCC ID: Q9DMSR4000AC
IC: 4675A-MSR4000AC

