

HPE Aruba Networking AP-ANT-348 Antenna for Indoor Access Points



Dual-polarized cabled tri-band 4-element high gain directional panel antenna (RP-SMA) for indoor and outdoor use

The AP-ANT-348 antenna is a tri-band, 4-element, dual-polarized panel antenna with nominal 60° H x 60° V beamwidths and 8dBi peak gain. This antenna is well suited for indoor and outdoor directional coverage for Wi-Fi access in 2.4GHz, 5GHz and/or 6GHz concurrently.

The AP-ANT-348 can be mounted directly to a wall (or ceiling) using the supplied screws and anchors, or if more flexibility is needed it can be combined with the optional AP-ANT-MNT-U articulating wall/pole mount.

Specifications

Frequency bands, ranges, and peak gains

- 2.4GHz	2.400GHz – 2.500GHz	7.5dBi
- 5GHz	5.000GHz – 5.875GHz	8.0dBi
- 6GHz	5.935GHz – 7.150GHz	8.0dBi (6.7dBi above 7.0GHz)

Polarization

- Dual slant, $\pm 45^\circ \times 2$

Pattern beamwidth (3dB)

- 2.4GHz	Elevation (V): 70 degrees (typ)	Azimuth (H): 70 degrees (typ)
- 5GHz	Elevation (V): 56 degrees (typ)	Azimuth (H): 56 degrees (typ)
- 6GHz	Elevation (V): 56 degrees (typ)	Azimuth (H): 56 degrees (typ)

Input impedance

- 50 Ohms

Maximum input power

- 6 Watts per port

VSWR

- < 2.0:1

Port isolation

- 2.4GHz 20dB
- 5GHz 20dB
- 6GHz 20dB

Dimensions

- 190mm x 190mm x 40mm (antenna itself)
 - o An additional 11mm each side is required for antenna wall installation
- 263mm x 245mm x 78mm (as it ships)

Weight

- 1kg (antenna itself)
- TBD (as it ships)

Radome

- Material: Polycarbonate
- Color: Grey-white (RAL-9002)

Fly cable length& type / connector

- 4x 750mm RF coaxial cable with RP-SMA male connector

Operating temperature range and relative humidity

- -40°C to +85°C (temp) 5% to 95% RH (humidity)

Water and dust protection (IP rating)

- IP67

Wind speed

- 220km/h (survival) 160km/h (operation)

Lightning protection

- DC grounded

Installation hardware

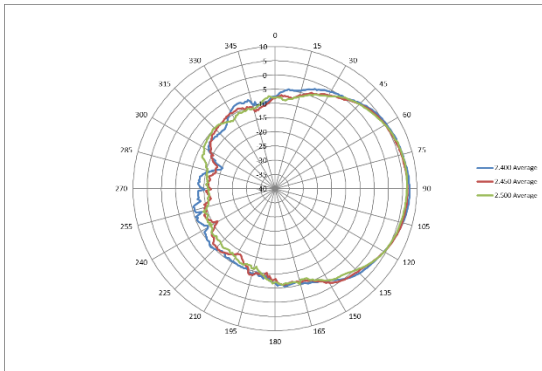
- Ships with wall anchors
- Optional AP-ANT-MNT-U adjustable wall/pole mount bracket purchased separately.

Shipping content

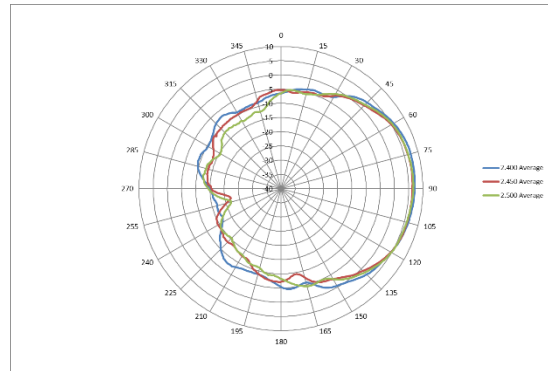
- This antenna ships in a cardboard box
- An installation guide hardcopy is included in the box

Antenna patterns (averaged for all four antenna elements)

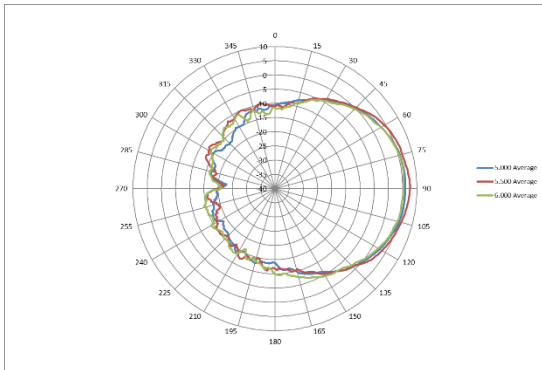
Horizontal (azimuth) plane (top view) & Vertical (elevation) plane (side view)



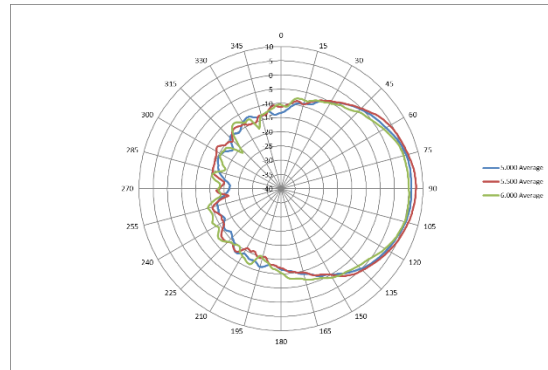
2.4GHz antenna patterns (horizontal)



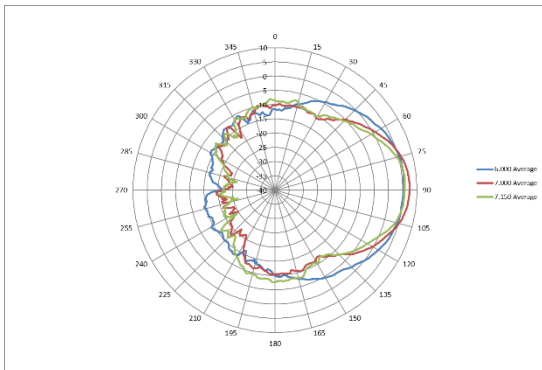
2.4GHz antenna patterns (vertical)



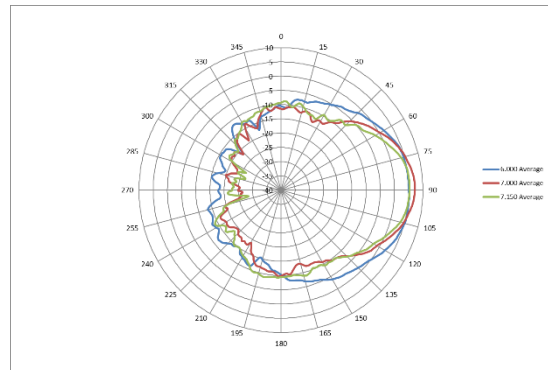
5GHz antenna patterns (horizontal)



5GHz antenna patterns (vertical)

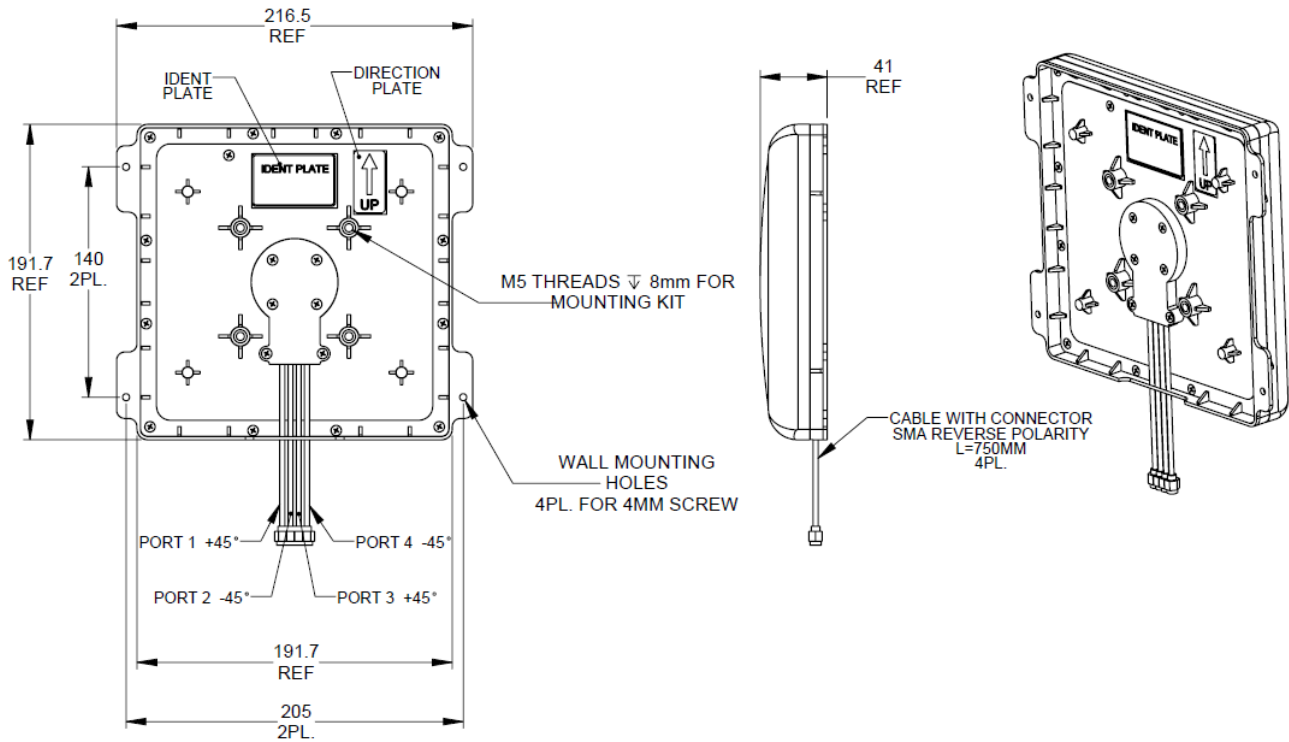


6GHz antenna patterns (horizontal)



6GHz antenna patterns (vertical)

Mechanical drawings



Ordering information

Part number	Description
HPE Aruba Networking Antennas for Indoor Access Points (RP-SMA)	
S1F84A	HPE Aruba Networking AP-ANT-348 Cabled RP-SMA Tri-Band 4x4 High Gain Directional Panel Antenna