

## HPE Aruba Networking AP-ANT-313 Antenna for Indoor Access Points



### Tri-band omni-directional high-performance dipole antenna (RP-SMA, cabled) for indoor and outdoor use

The AP-ANT-313 antenna is a high-performance, tri-band, omni-directional, indoor / outdoor dipole antenna ideally designed for multifunction access points that require an omnidirectional coverage pattern for WLAN service delivery or air monitoring on the 2.4GHz, 5GHz and/or 6GHz bands.

The AP-ANT-319 ships with all hardware for pole or (suspended) ceiling mounted deployments.

## Specifications

### Frequency bands, ranges, and peak gains

- |          |                     |      |
|----------|---------------------|------|
| - 2.4GHz | 2.400GHz – 2.500GHz | 3dBi |
| - 5GHz   | 4.900GHz – 6.000GHz | 6dBi |
| - 6GHz   | 6.000GHz – 7.125GHz | 6dBi |

### Polarization

- Linear, Vertical

### Pattern beamwidth (3dB)

- |          |                            |                          |
|----------|----------------------------|--------------------------|
| - 2.4GHz | Elevation (V): 50 degrees  | Azimuth (H): 360 degrees |
| - 5GHz   | Elevation (V): ~20 degrees | Azimuth (H): 360 degrees |
| - 6GHz   | Elevation (V): ~20 degrees | Azimuth (H): 360 degrees |

### Input impedance

- 50 Ohms

### Maximum input power

- 2 Watts

### VSWR

- < 2.0:1

### Port isolation

- Not applicable – single element antenna

### Dimensions

- Ø28.6mm x 245.7mm (antenna itself)
- 362mm x 118mm x 47.6mm (as it ships)

### Weight

- 120g (antenna itself)
- 565g (as it ships)

### Radome

- Material: PC ET3113
- Color: White

### Fly cable length & type / connector

- 36" Plenum rated RG58LL with RP-SMA connector

### Operating temperature range and relative humidity

- -40°C to +70°C (temp) RH 10% - 95% (humidity)

### Water and dust protection (IP rating)

- Upright position: IP44 Inverted Position: N/A

### Wind speed

- 193 km/h

### Lightning protection

- Not applicable

### Installation hardware

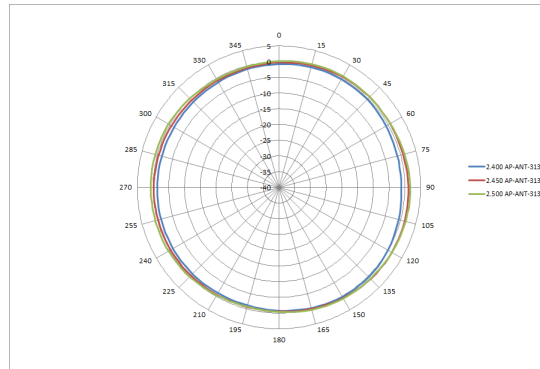
- Inverted ceiling clip for indoor
- Inverted I-beam clamp for indoor
- Upright pole mount for outdoor

### Shipping content

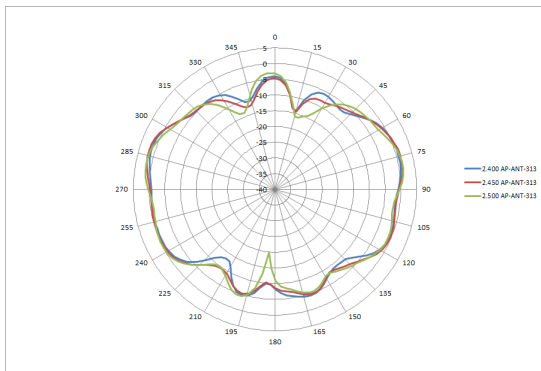
- Antenna and mounting hardware included in unit carton

## Antenna patterns

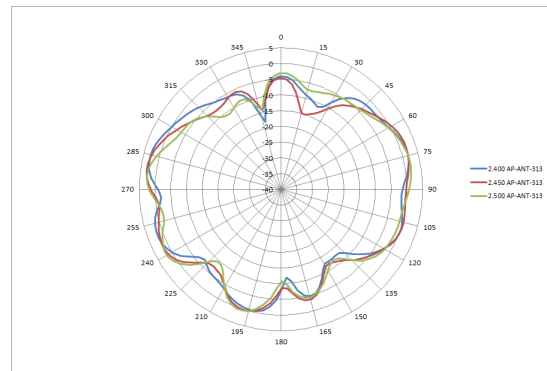
Horizontal (azimuth) plane (top view) & Vertical (elevation) planes (front/side view)



2.4GHz antenna patterns (horizontal)

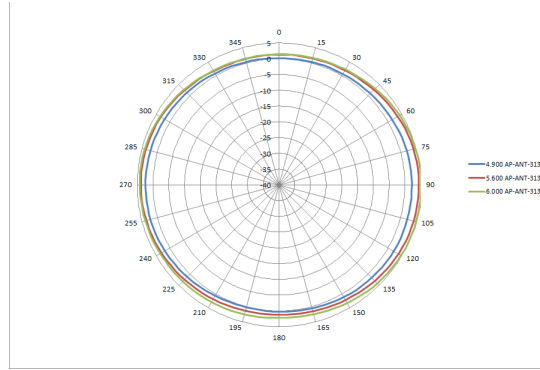


2.4GHz antenna patterns (vertical/0)

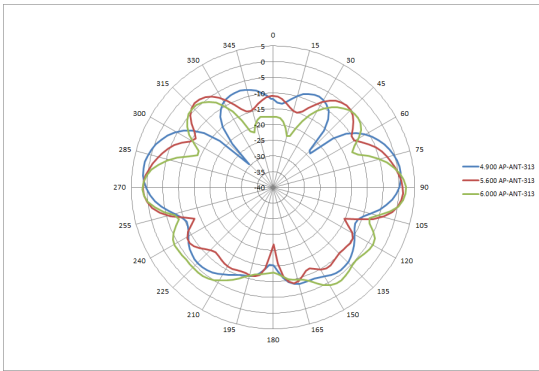


2.4GHz antennas patterns (vertical/90)

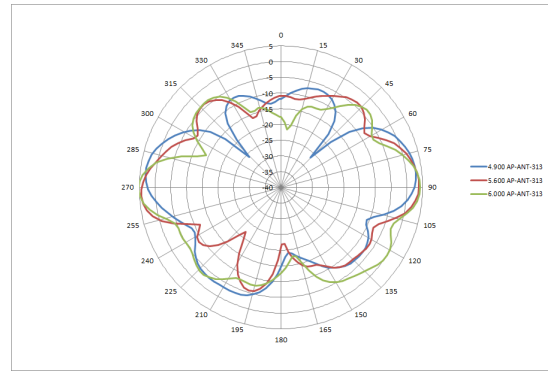
Datasheet – HPE Aruba Networking AP-ANT-313 Antenna for Indoor Access Points



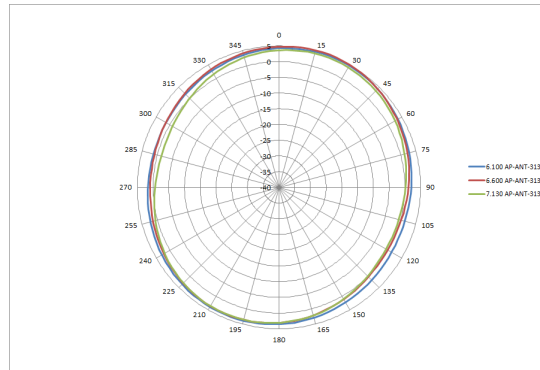
5GHz antenna patterns (horizontal)



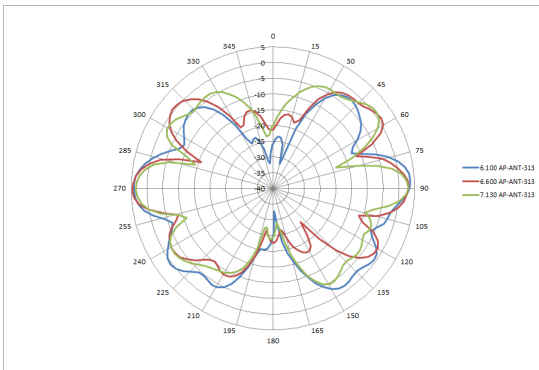
5GHz antenna patterns (vertical/0)



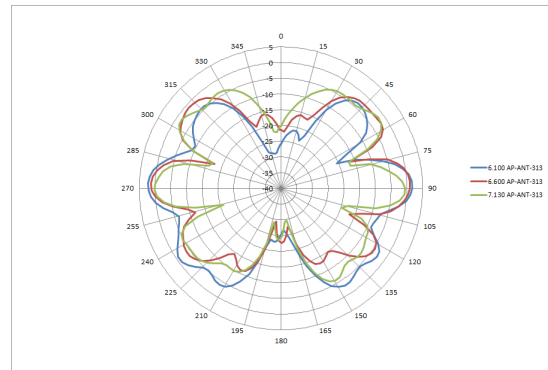
5GHz antennas patterns (vertical/90)



6GHz antenna patterns (horizontal)

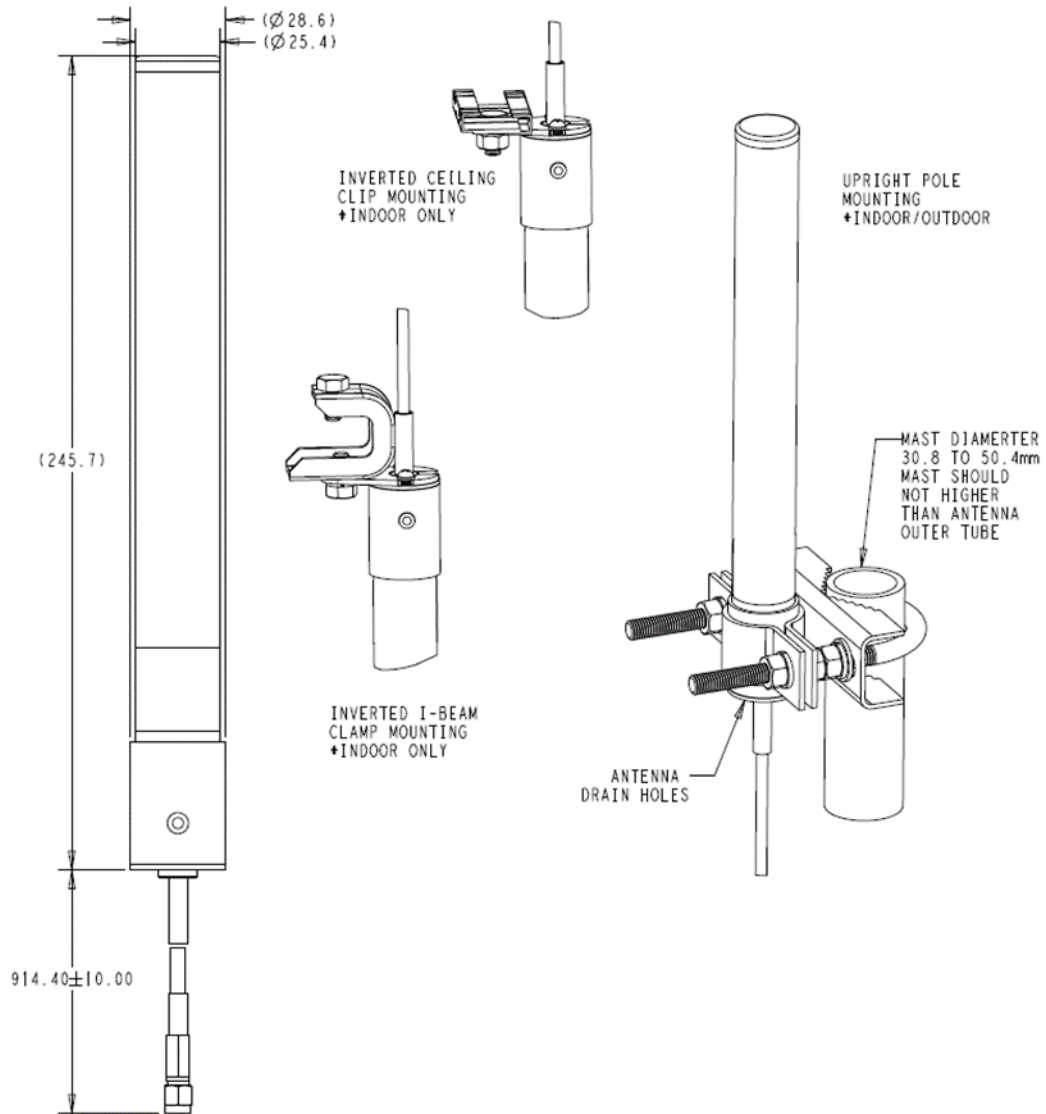


6GHz antenna patterns (vertical/0)



6GHz antennas patterns (vertical/90)

## Mechanical drawings



## Ordering information

Part number	Description
<b>HPE Aruba Networking Antennas for Indoor Access Points (RP-SMA)</b>	
<b>S1F81A</b>	HPE Aruba Networking AP-ANT-313 Cabled RP-SMA Tri-Band 1x1 Omni Dipole Antenna