

2018\_12\_20  
48RVA01050E  
PCB P/N: 2110271E REV 0  
2018 ARUBA NETWORKS

Barcode label with alphanumeric characters and a barcode.

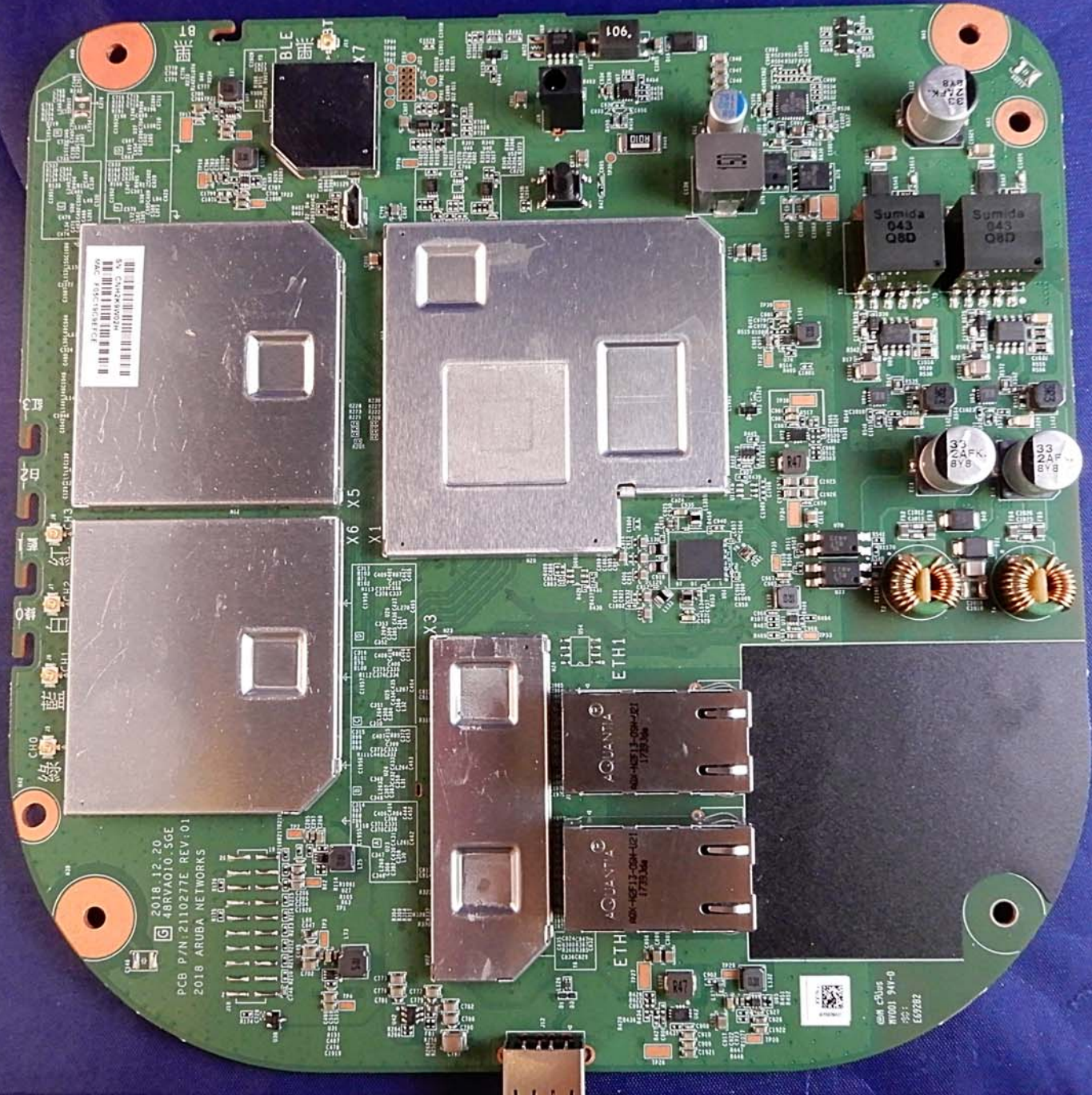
33 2AFK BYB  
33 2AFK BYB

33 2AFK 616

Sumida 943  
Sumida 943



WESTCOTT

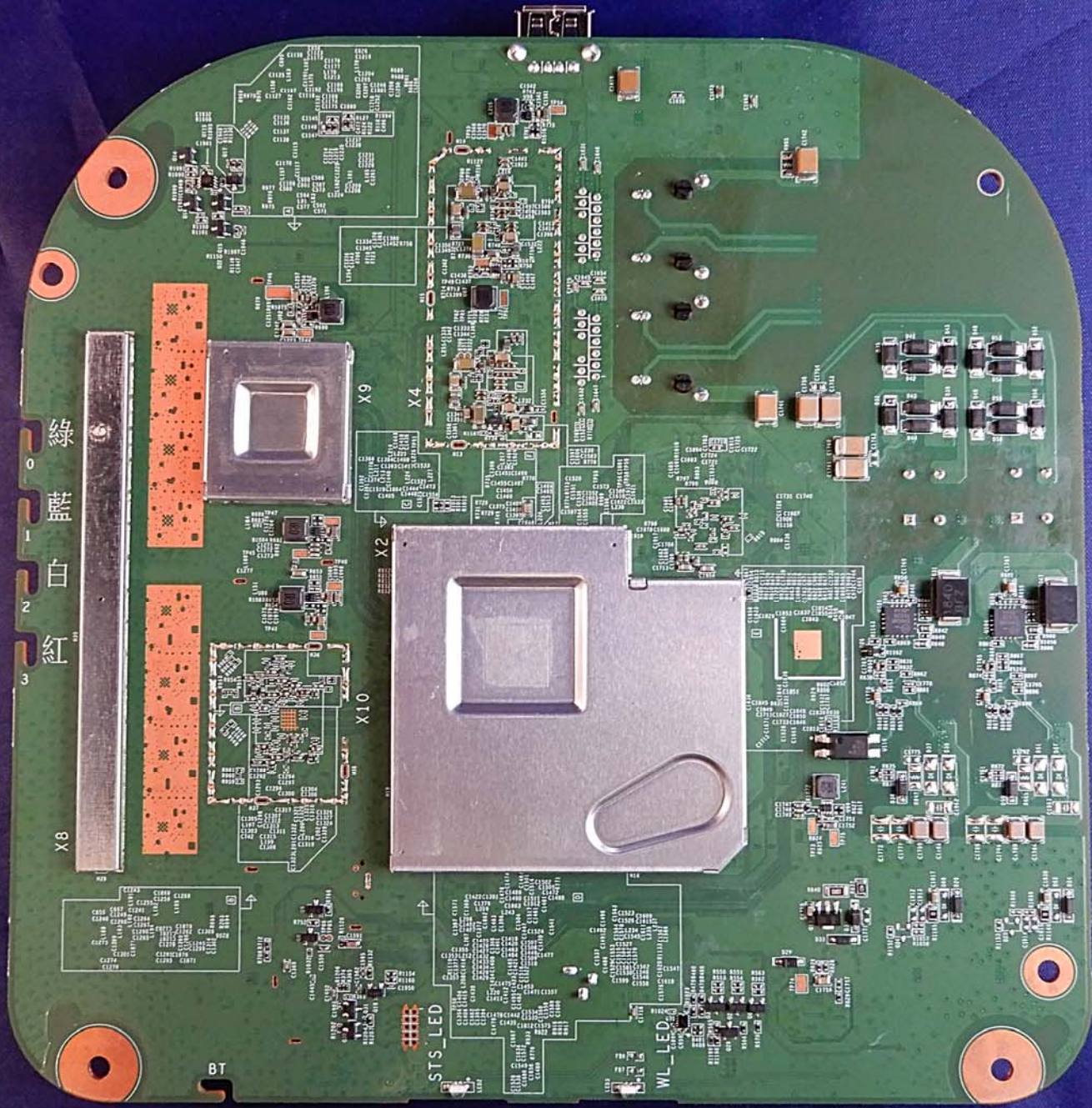


2110277E 01  
48RVA010\_SGE  
2018 ARUBA NETWORKS

2018.12.20  
48RVA010\_SGE  
PCB P/N: 2110277E REV: 01  
2018 ARUBA NETWORKS

QR Code

1 2 3 4 5 6 7 8 9 10 11



綠  
藍  
白  
紅

0  
1  
2  
3

X8

X9

X4

X2

X10

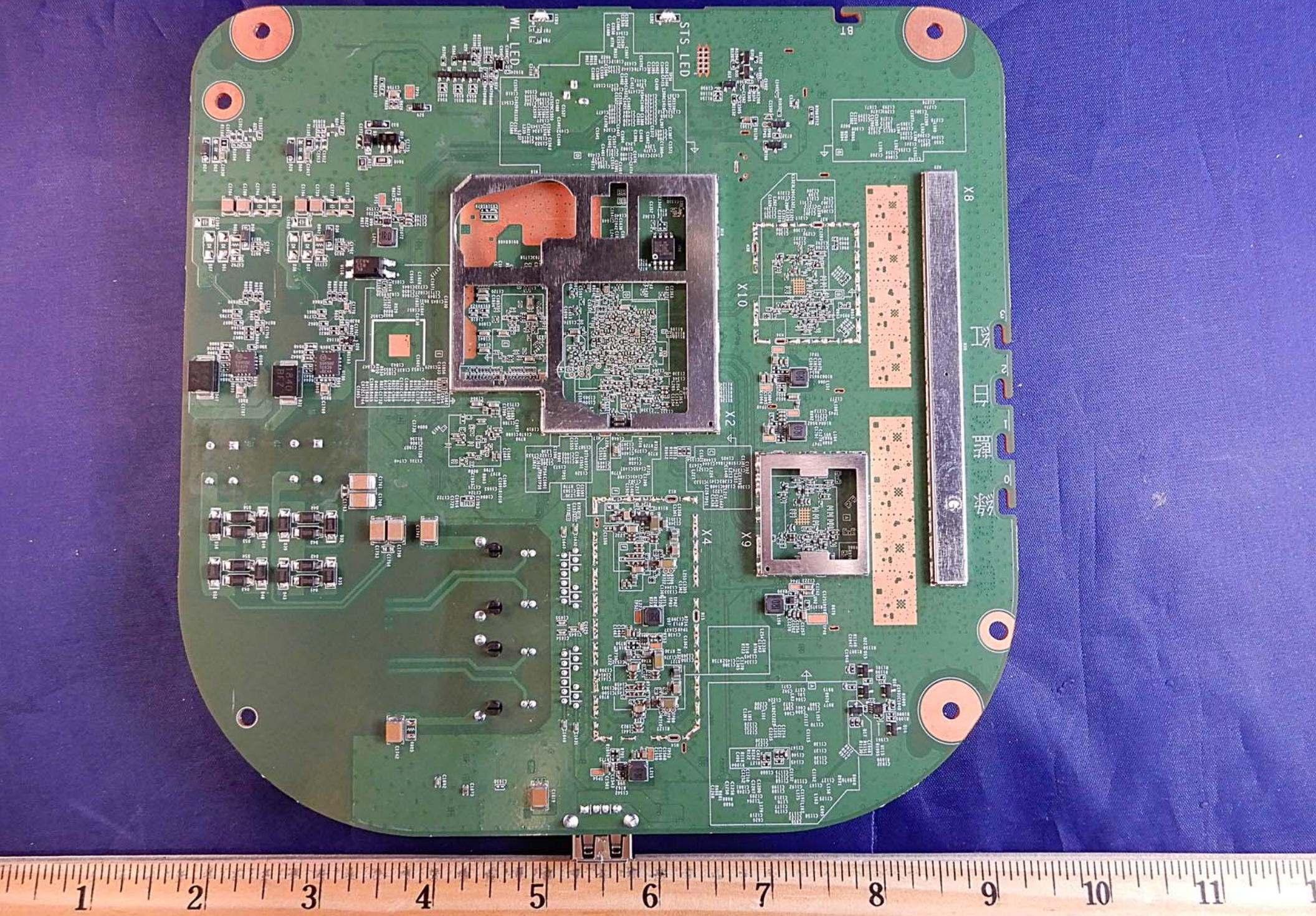
STS\_LED

WL\_LED

BT



WESTCOTT



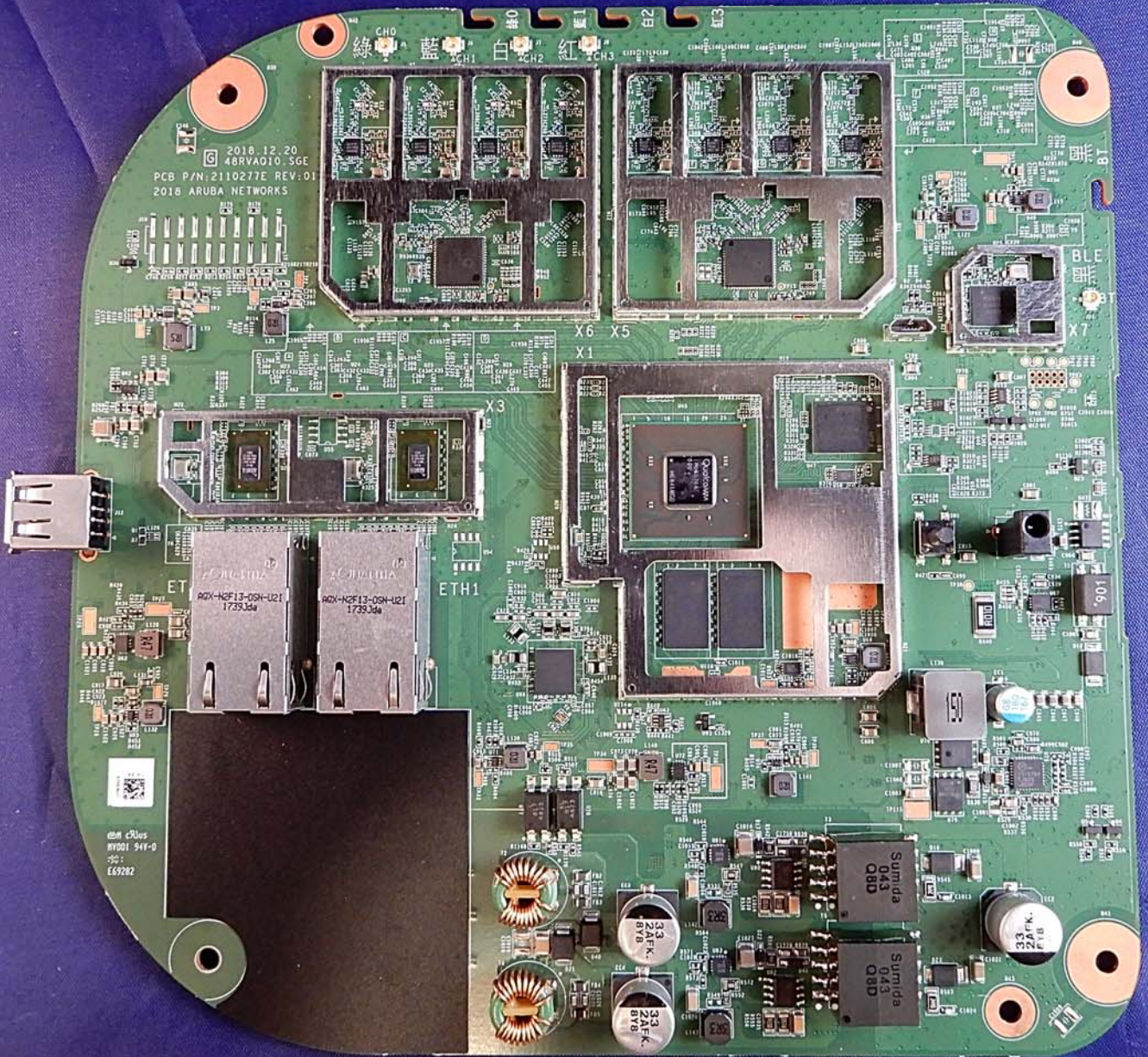
Central processor area with a large metal heat spreader. The processor is a square chip with a grid of pins, surrounded by various support components like capacitors and resistors. The heat spreader is a dark, rectangular metal plate with a central cutout for the processor.

Memory module (RAM) with a square chip and a grid of pins. It is mounted on a small PCB carrier. The chip is labeled with 'DDR2' and other specifications.

Two long, narrow memory modules (likely NAND flash) mounted on the right side of the board. They are connected to the main board via gold-plated contacts. The modules are labeled 'X8' and 'X10'.

Main PCB area containing various electronic components including capacitors, resistors, and integrated circuits. The board is green with white silkscreen text. Labels include 'STS\_LED', 'WL\_LED', 'X2', 'X9', 'X4', and 'X8'. There are also several circular mounting holes around the perimeter.





2018.12.20  
48RVA010\_SGE  
PCB P/N: 2110277E REV: 01  
2018 ARUBA NETWORKS

© 2018 cPlus  
#0001 541-0  
2018  
E69282



WESTCOTT

