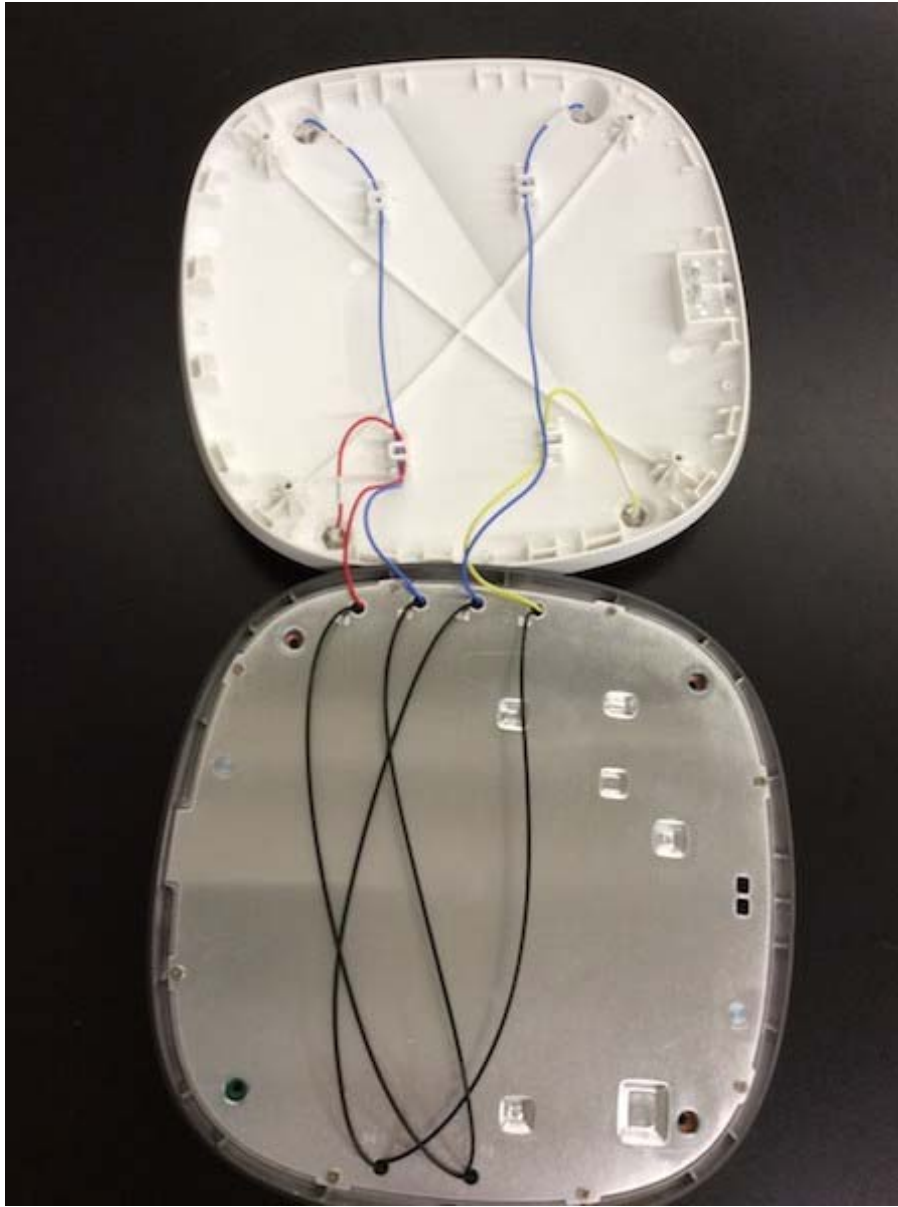


!

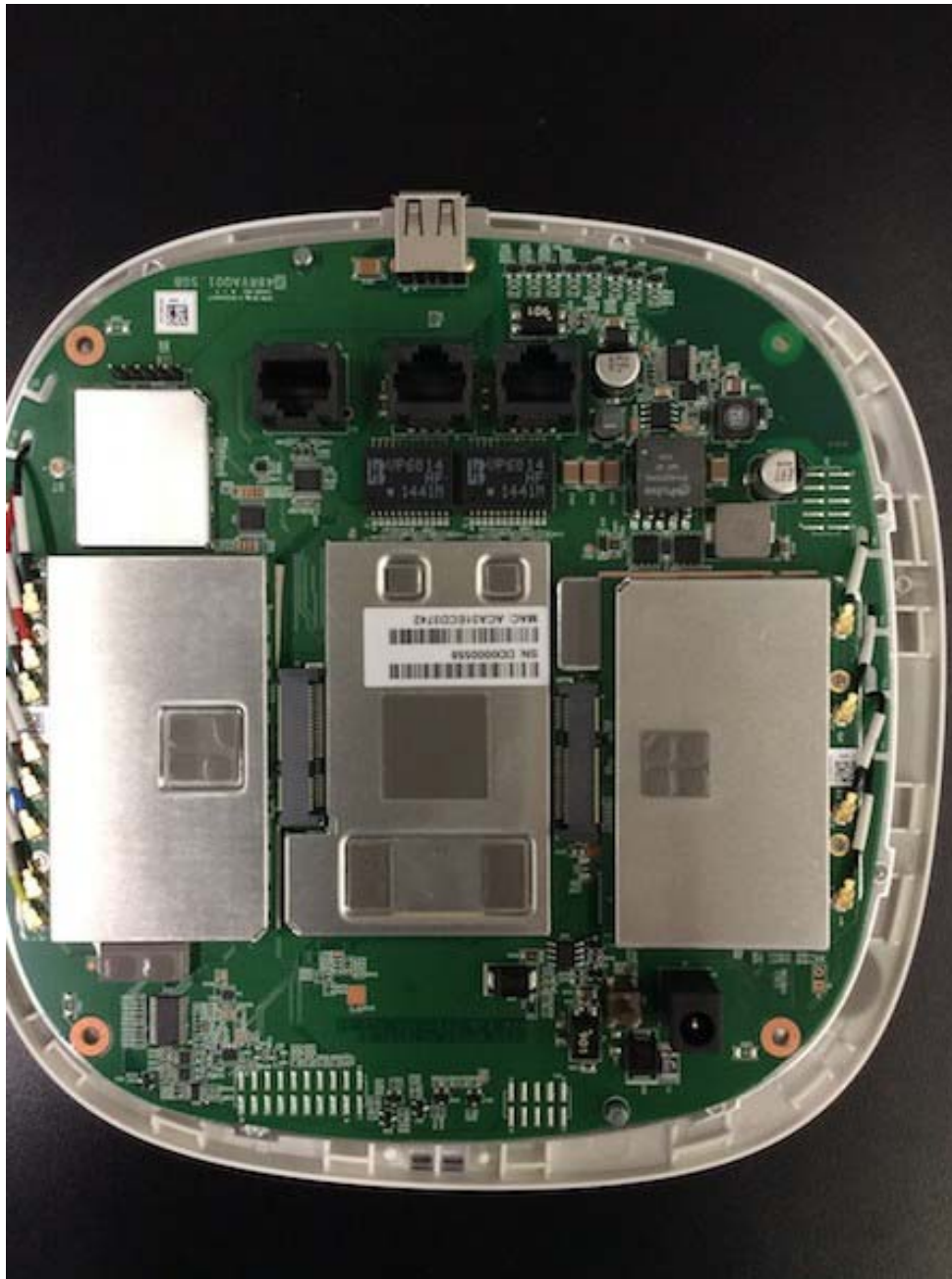
Internal Photos
Model: AP324& AP325



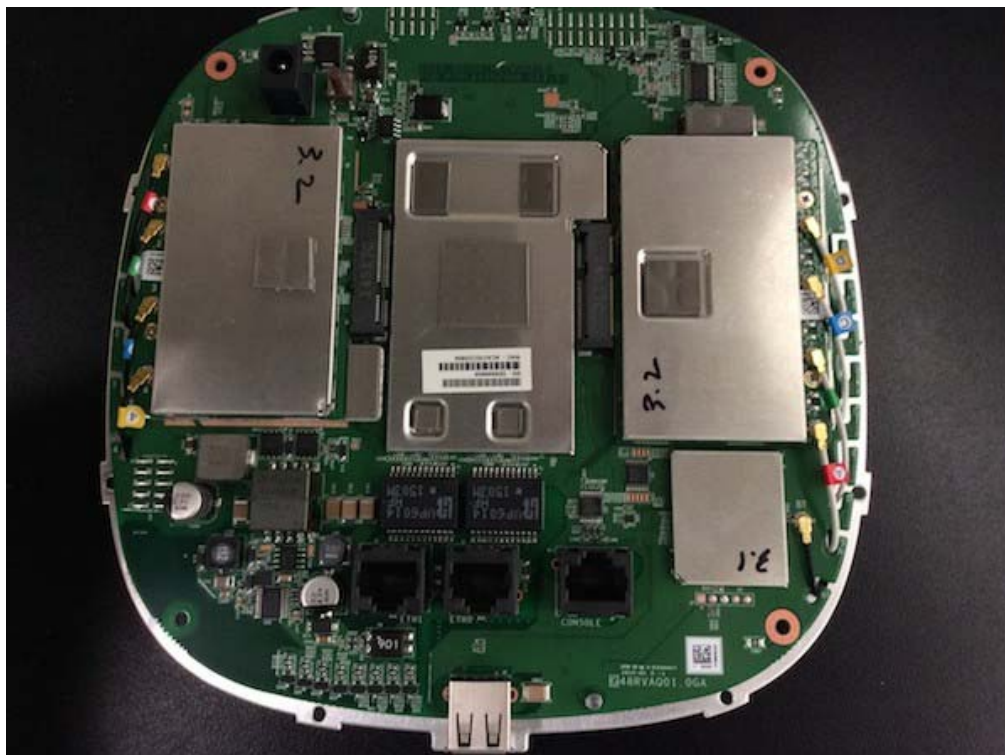
AP325 Cover Removed



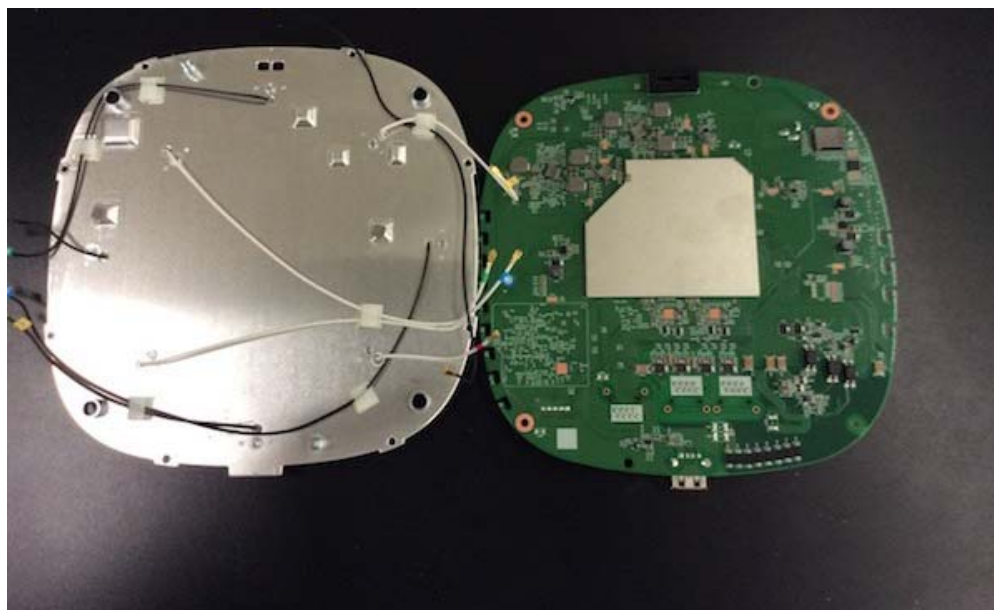
AP 324 Cover Removed



AP324 Bottom View



AP325 Bottom View



View under Antenna Plate



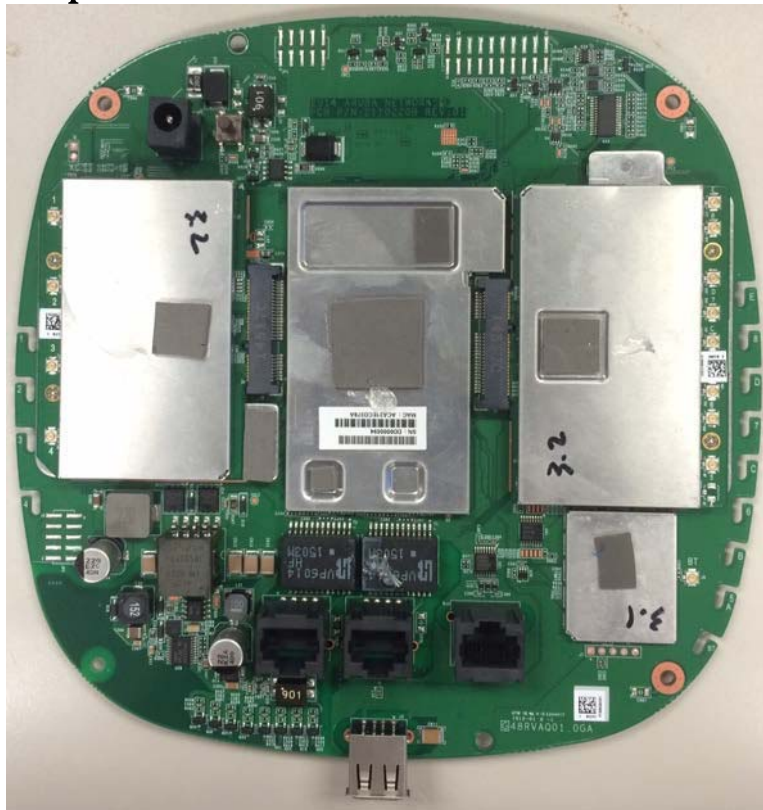
Top View of Main Board PCB



Main Board with Shield Removed (BLE section Labeled)

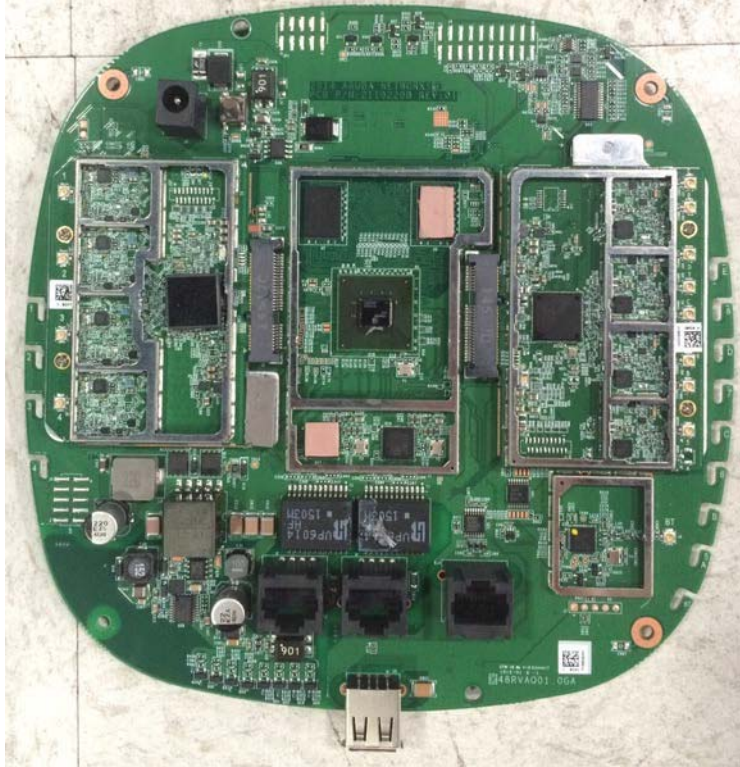


Close Up Main Board CPU Shield Removed

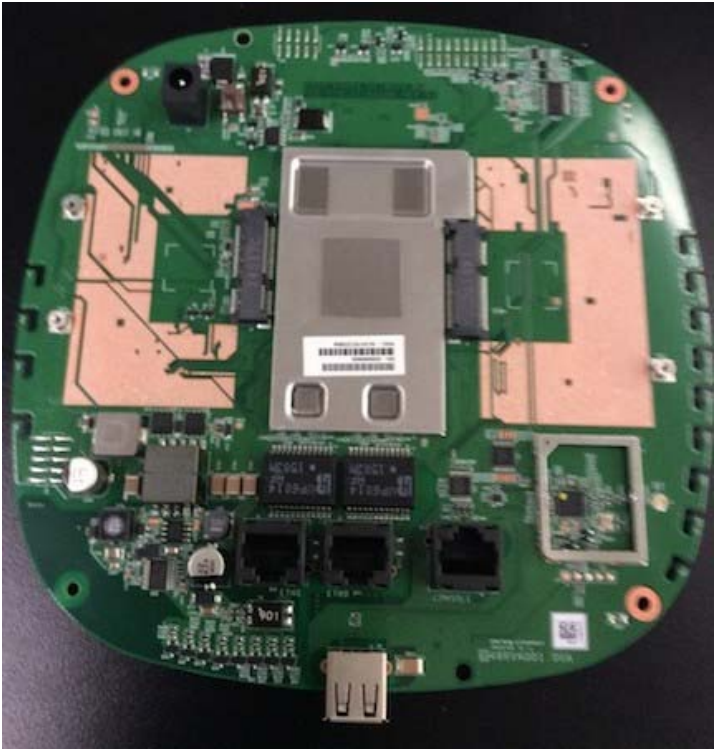


Bottom View of the Main Board PCB with Shield

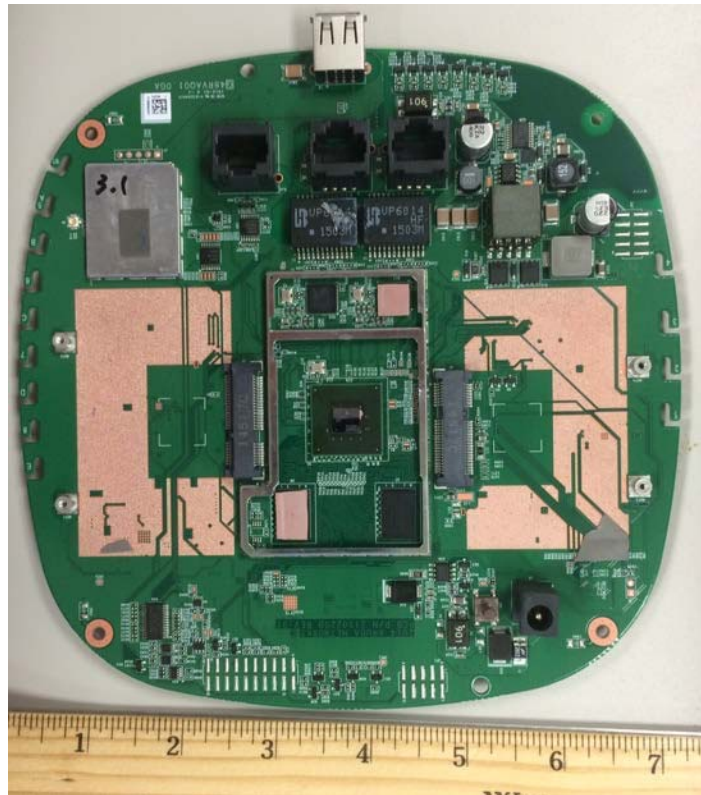
!



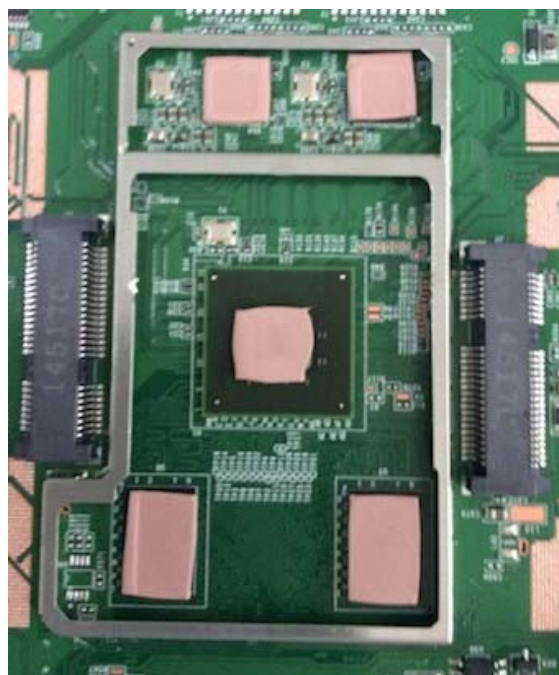
Bottom View of the Main Board with Shields Removed



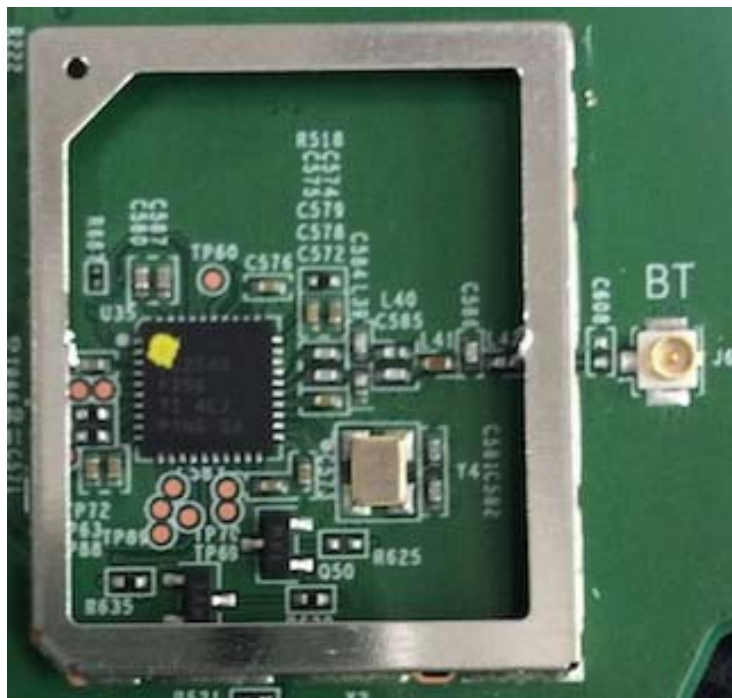
Radio Cards Removed



RadioCards removed, CPU Shield Removed



Close Up Main Board CPU Shield Removed



BlueTooth Section (Shield Removed)



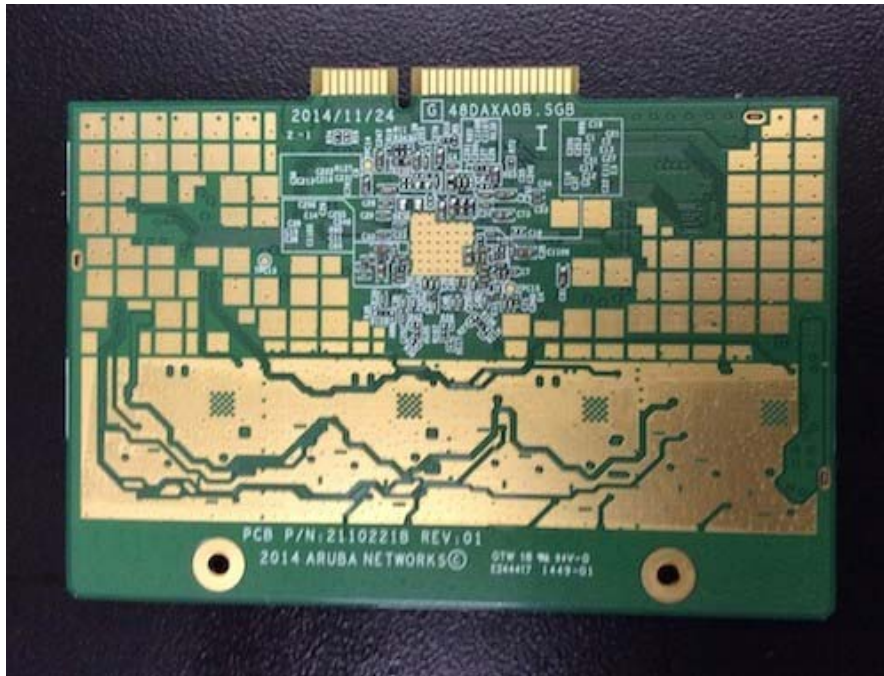
AP324 5GHz RF Chip (Top)



AP324 5GHz Card (Shield Removed)



AP324 5GHz Card (Bottom)



AP324 5GHz Card Bottom (Plate Removed)



AP325 5GHz Card (Top)



AP325 5GHz Card (Top – Shield Removed)



AP 325 5GHzCard (Bottom)



AP325 5GHz Card (Bottom-Plate Removed)



2.4GHz Card (Top View)

Note: Same card used in the AP324 & AP325



2.4GHz Card (Top-Shield Removed)

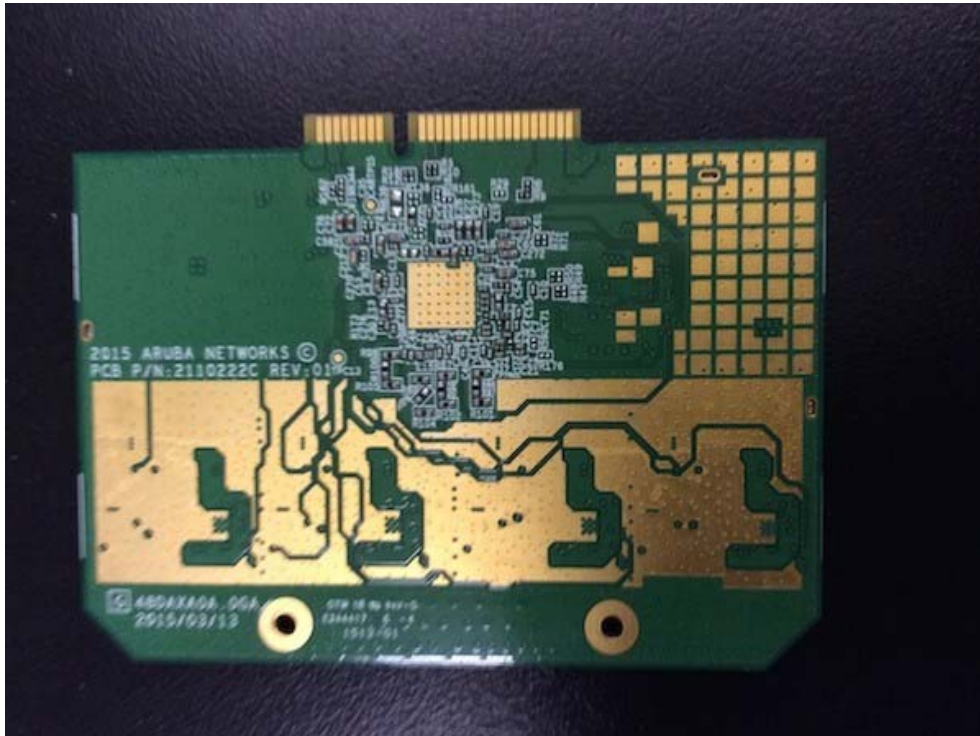
Note: Same card used in the AP5324 & AP5325



2.4Ghz Card (BottomView)

Note: Same card used in the AP324 & AP325

!



2.4GHz Card (Bottom – Plate Removed)
Note: Same card used in the AP5324& AP5325