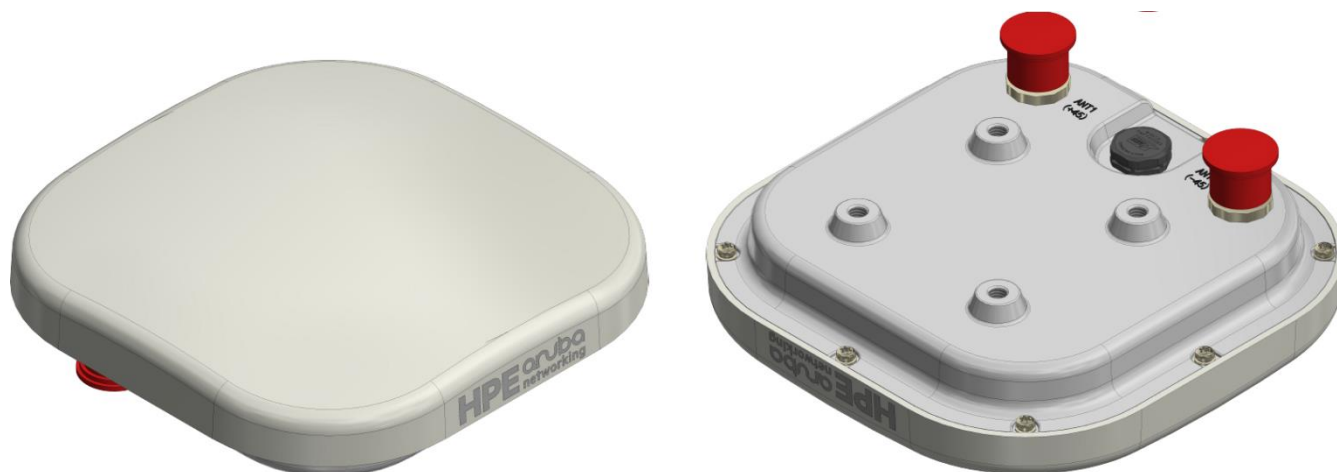


DATASHEET



a Hewlett Packard
Enterprise company



The AP-ANT-674 antenna is a high-performance, dual-band, directional, outdoor antenna ideally designed for multi-function access points that require an omnidirectional coverage pattern for WLAN service delivery or air monitoring on the 5.15~5.9GHz and 5.9 to 7.125GHz bands. AP-ANT-674 unique design also allows for integration inside access points, routers and gateways, eliminating the need for external antennas.

Specifications

Frequency bands, ranges and peak gains/uncorrelated gains

- | | | |
|--------|---------------------|---|
| - 5GHz | 5.150GHz – 5.935GHz | peak gain 11.6dBi / uncorrelated gain 11.0dBi |
| - 6GHz | 5.935GHz – 7.150GHz | peak gain 11.5dBi / uncorrelated gain 11.5dBi |

Polarization

- Dual-slant Polarization (+/- 45 degree)

Input impedance

- 50 Ohms

Maximum input power

- TBD Watts

VSWR

- <2:1 max

Material

- Composite

Port isolation

- > 30 dB

Dimensions

- L:151mm * W:151mm * H:54mm
- TBD (as it ships)

Weight

- 557g (antenna itself)
- TBD (as it ships)

Cable length & type / connector

- N-type

Operating temperature range and relative humidity

- TBD (temp) TBD (humidity)

Water and dust protection (IP rating)

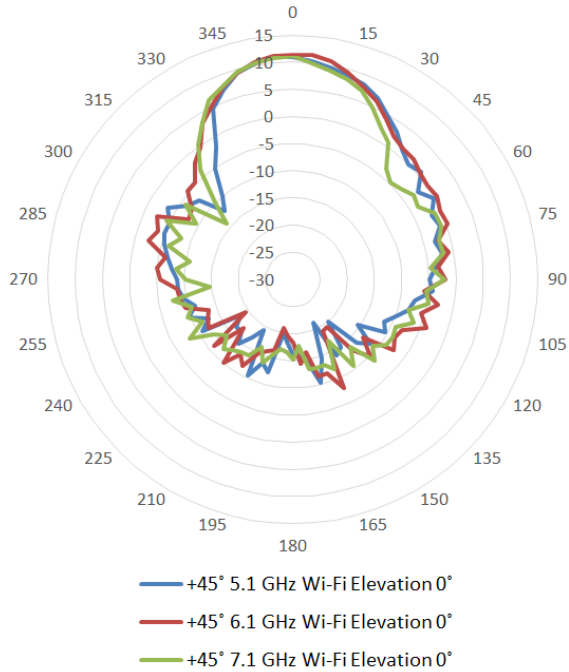
- IP67

Shipping content

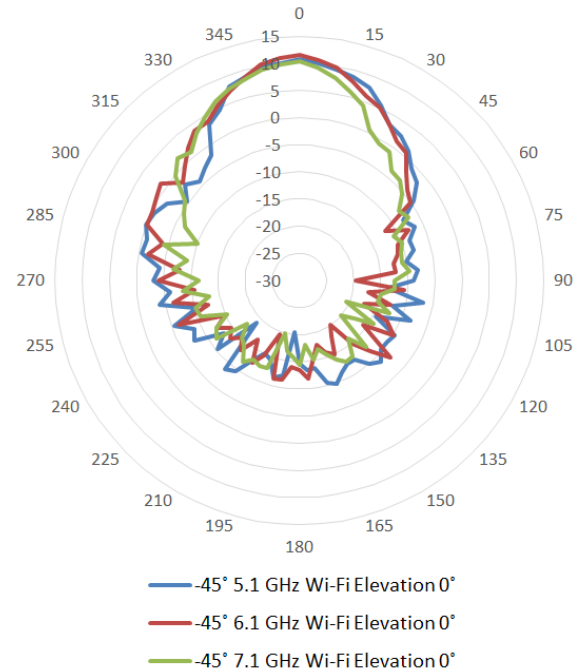
- TBD (how does it ship)
- TBD (what's included)

Antenna patterns

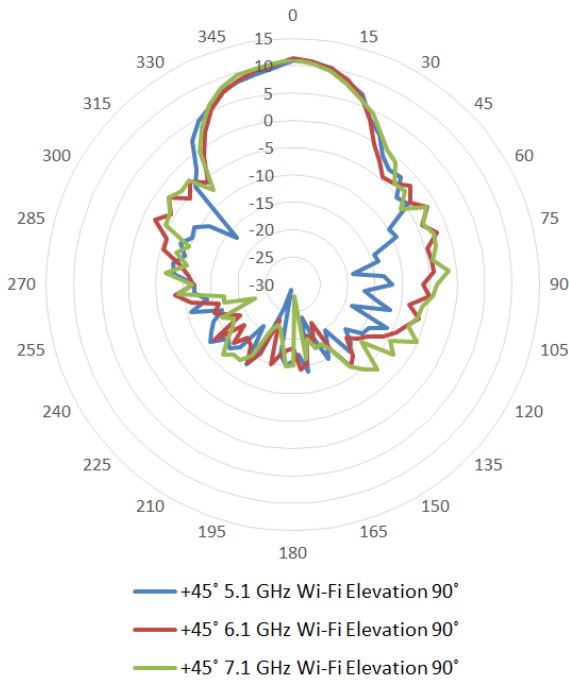
Horizontal (azimuth) planes (top view) Vertical (elevation) planes (front/side view XZ /YZ)



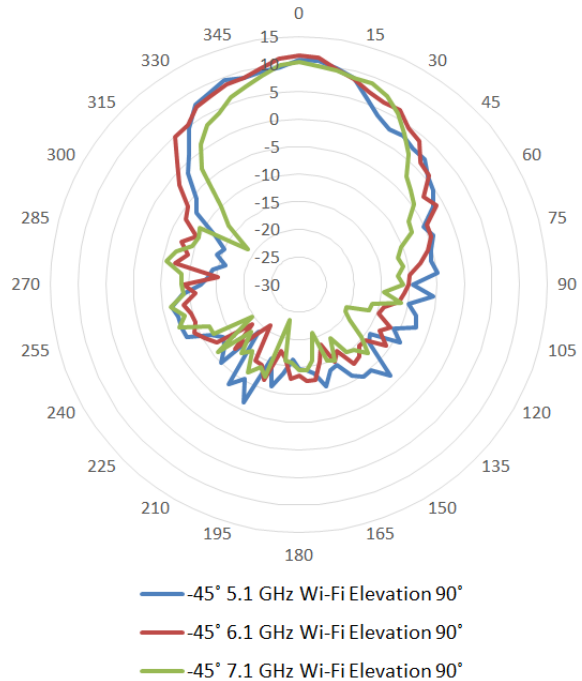
+45° antenna patterns (Elevation 0°)



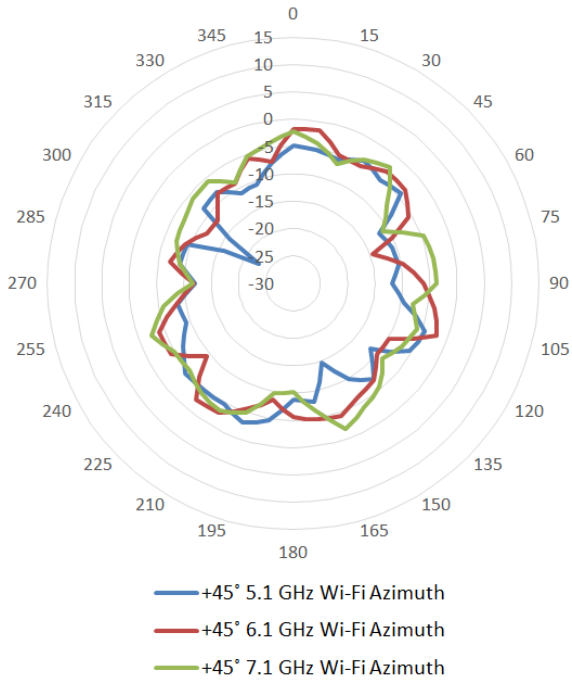
-45° antenna patterns (Elevation 0°)



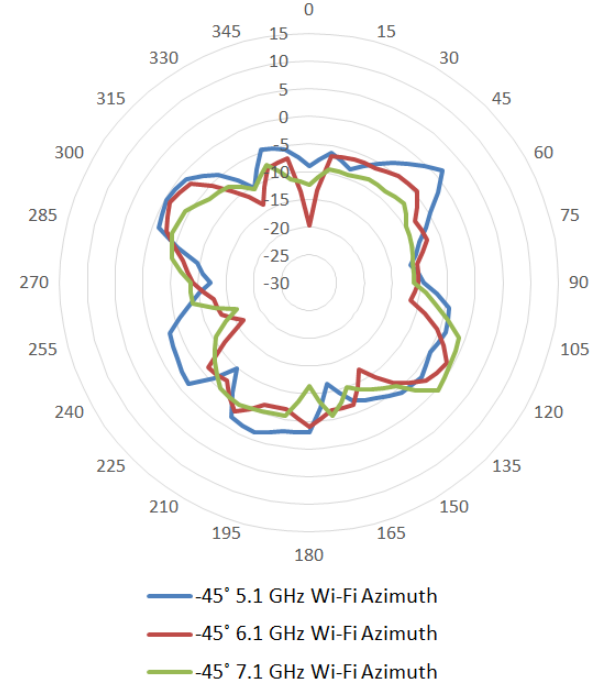
+45° antenna patterns (Elevation 90°)



-45° antenna patterns (Elevation 90°)

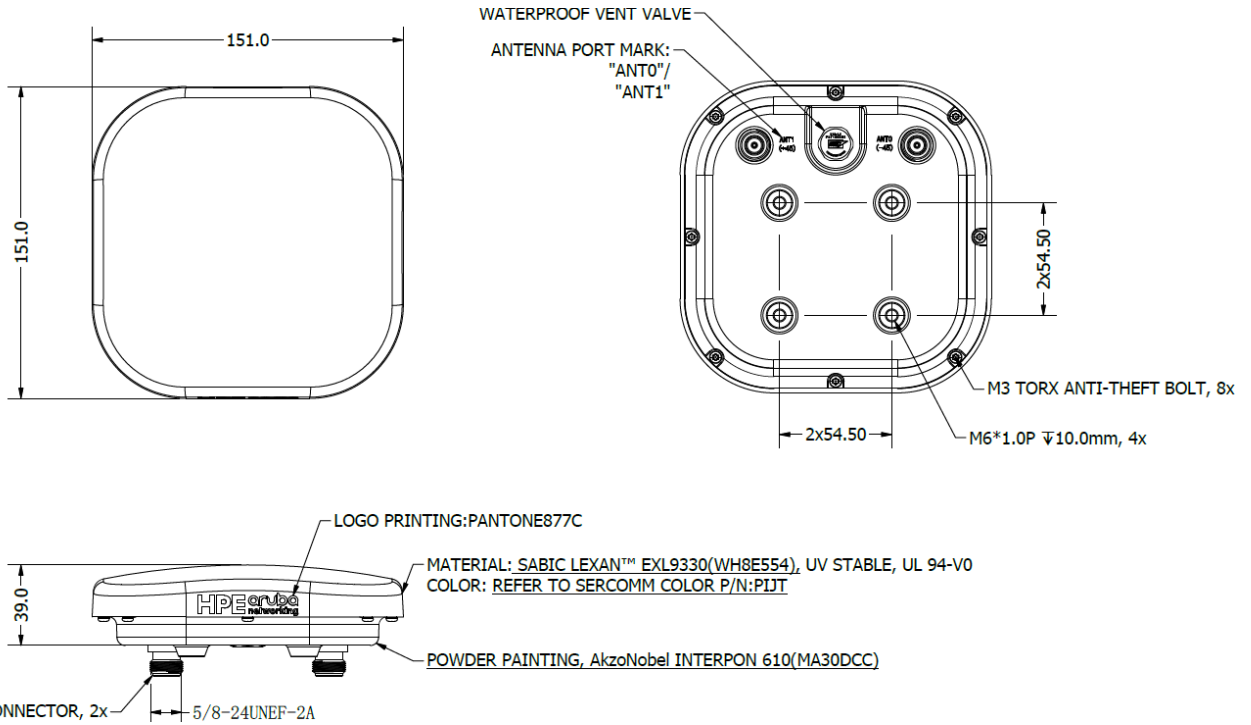


+45° antenna patterns (Azimuth)



-45° antenna patterns (Azimuth)

Mechanical drawings



Ordering information

Part number	Description
HPE Aruba Networking Antennas for Indoor Access Points (RP-SMA)	
eANT-2x2-56D30-14	HPE Aruba Networking AP-ANT-674Dual-Band Antenna