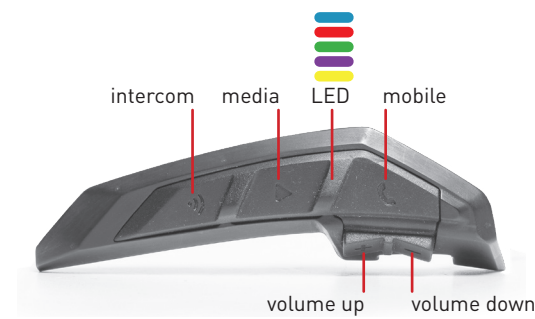
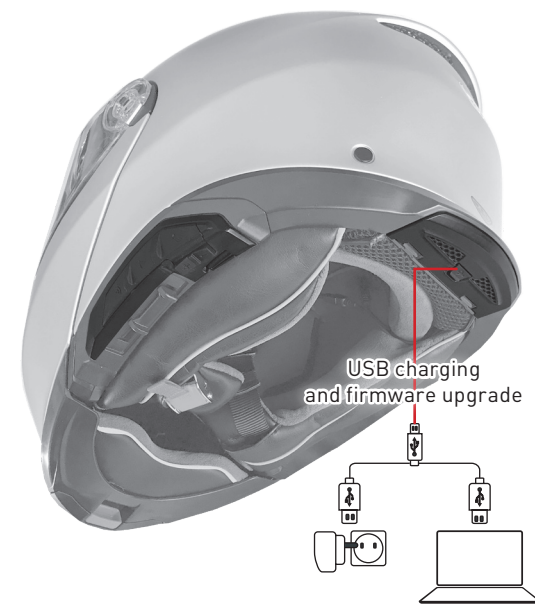


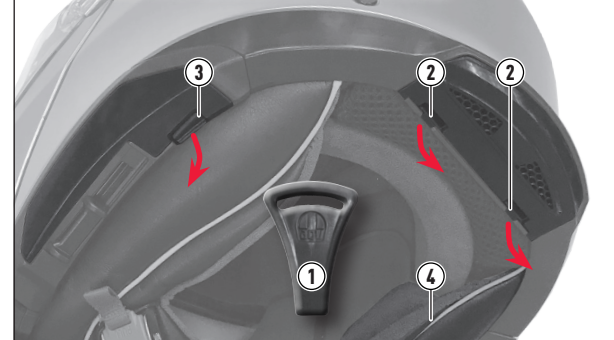


INSYDE.

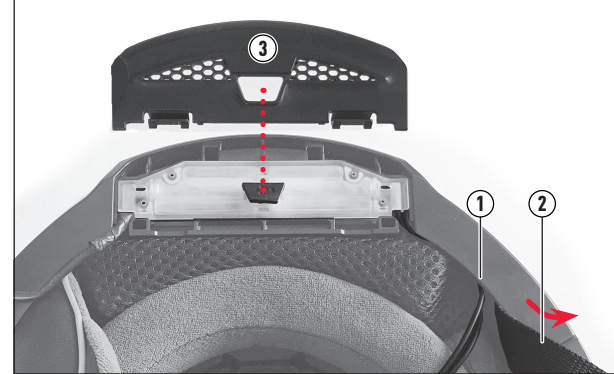


Default language is English. Language set can be changed via the *Cardo Connect* app.

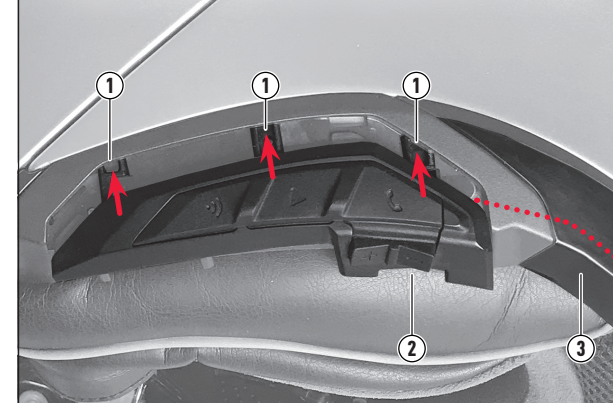
1 Remove the two covers applied on the helmet: using the specific tool **1** provided, release the two clips of the back unit **2** and detach it; release the clip of the headset **3** and push it downwards. Remove the right-side cheek pad **4** (see the helmet user manual).



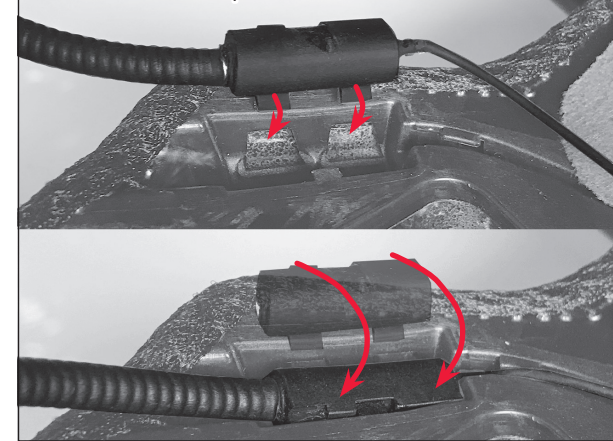
2 Install the back unit and thread its right side cables **1** under the helmet base trim (use the tool if necessary). Move the retention system **2** out before threading the cables. Attach the cover with the hole for the charging slot **3** supplied with Insyde.



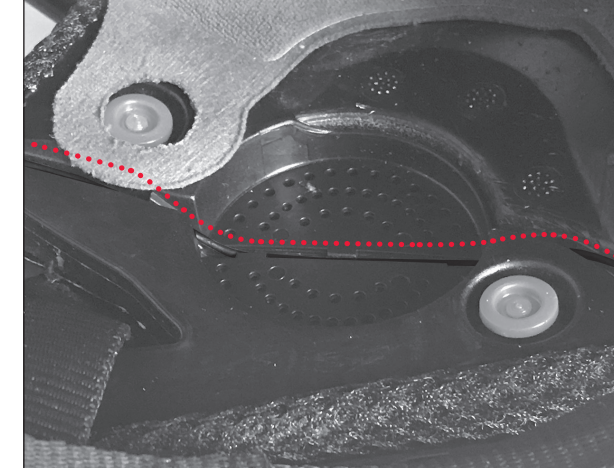
3 Apply the headset through the three hooking guides **1** and hook the plastic clip placed on the lower side **2**. Then be sure to thread its cable underneath the helmet base trim **3**.



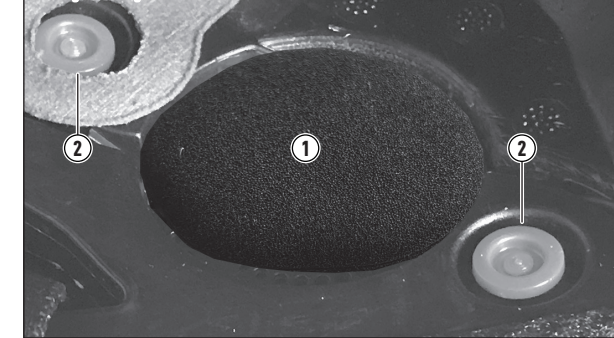
4 Connect the microphone and the speakers cables. Then, on the right side of the helmet, install the microphone in two movements.



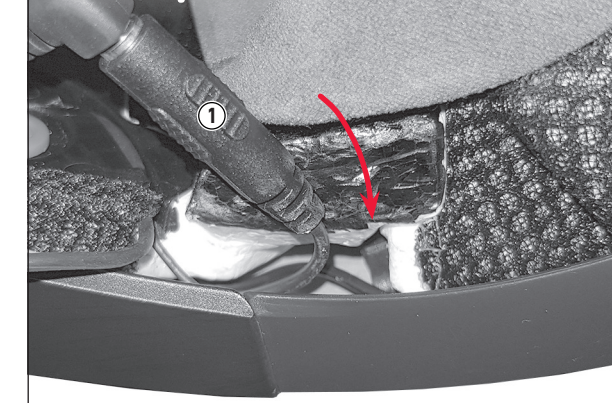
5 Drive the microphone cable through its own slot on the speaker's housing.



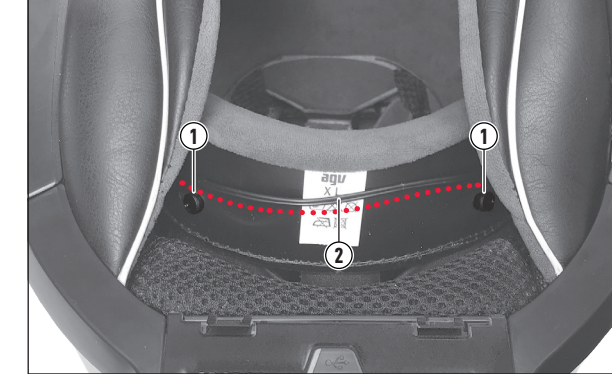
6 Install both the speakers **1** in their housing using the adhesive strap supplied. To install the left speaker, lift the cheek pad first, then attach it making sure that all its press studs **2** are fixed (see the helmet user manual for the cheek pad operations).



7 Insert the cables connectors **1** in the empty space between the outer shell and the polystyrene, on the right side. Insert the microphone cable first, then the speakers one.



8 Detach the crown pad releasing its two snap buttons **1**, then thread the left speaker cable **2** between the polystyrene and the crown pad. Then fix the crown pad, taking care not to damage the cables.



Quick start guide

www.agv.com
 Italy
 36064 Colcersa (VI)
 Via Louvigny, 35
 Dainese S.p.A.



USER MANUAL

Full version of the User manual available on cardosystems.com/support

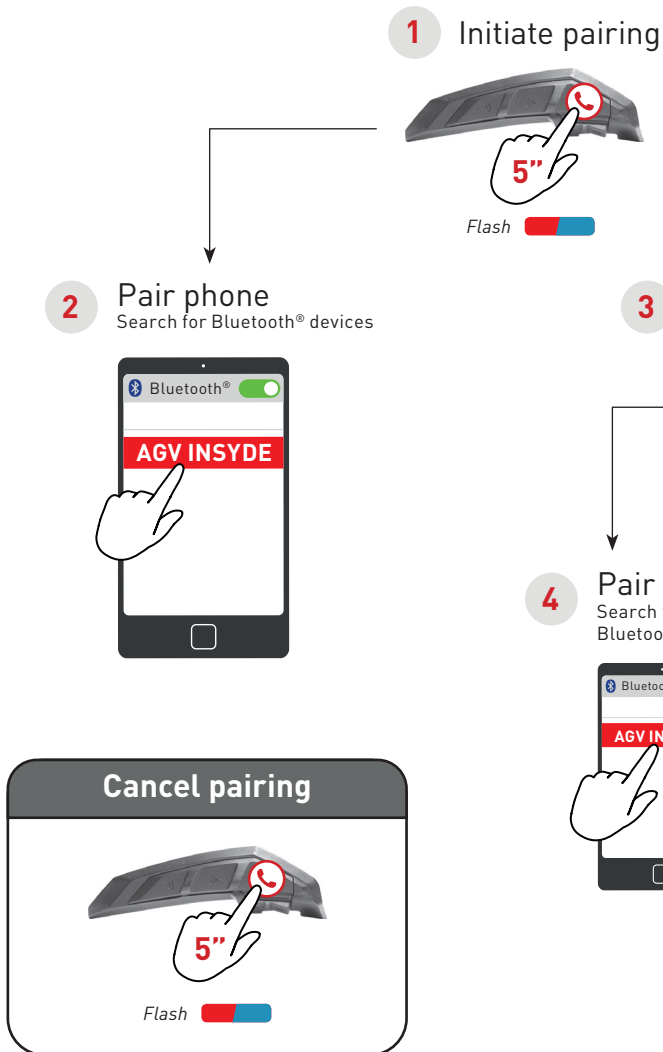
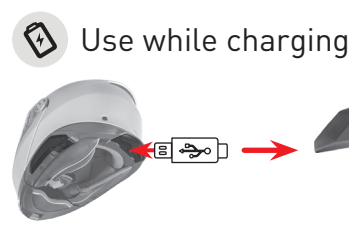


CARDO MOBILE APP

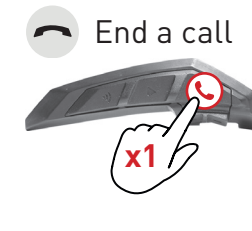
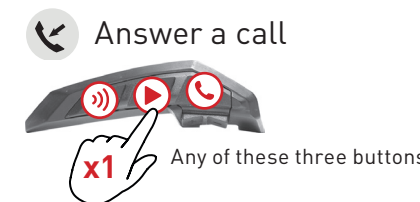
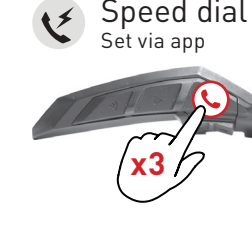
- For easy configuration
- Remote control operation
- On-the-go setting customization
- Managing DMC groups
- Available on:



Register your device on cardosystems.com/update/
 International: +49 89 450 36819
 USA & Canada: 1-800-488-0363
 support@cardosystems.com
 cardosystems.com



Paired successfully Flash



Verify you are in iMC Mode

Rapid flash

Create a DMC Group

Admin + all group members



Flash

THEN ONLY ONE GROUP ADMIN

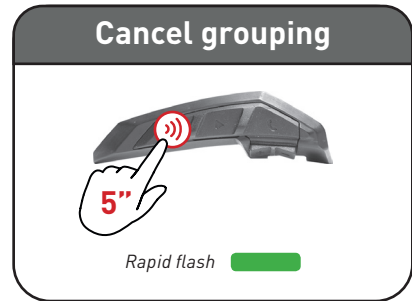


Flash

3 Grouped successfully

Join an existing DMC Group

Admin + new member ONLY



Talking - always on

Mute group Unmute group



Bridge (add) a non-DMC passenger

1 First, verify that passenger is paired via Bluetooth® (see 2-way Bluetooth® intercom pairing)

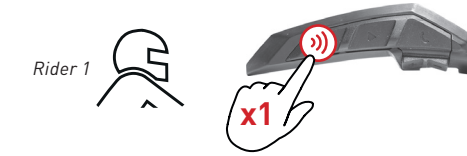
2 Start / Stop bridging



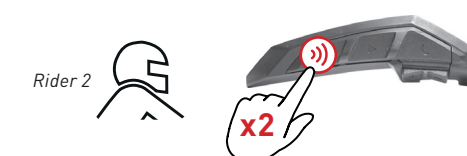
Private chat
Chat privately with one of the group members

- 1 Choose member for private chat via Mobile App
- 2 Start / Stop chat

Start / End / Add with rider 1



Start / End / Add with rider 2



Initiate a 4-way intercom Conference

"Hey Cardo, radio on"
"Hey Cardo, radio off"
"Hey Cardo, next station"
"Hey Cardo, previous station"



"Hey Cardo, music on"
"Hey Cardo, radio off"
"Hey Cardo, next track"
"Hey Cardo, previous track"

"Hey Cardo, volume up"
"Hey Cardo, volume down"
"Hey Cardo, mute audio"
"Hey Cardo, unmute audio"



"Hey Cardo, speed dial"
"Hey Cardo, redial number"
Answer
Ignore

"Hey Cardo, battery status"
"Hey Cardo, call intercom"



"Hey Siri"
"Hey Google"

Verify that you are in Bluetooth® Mode



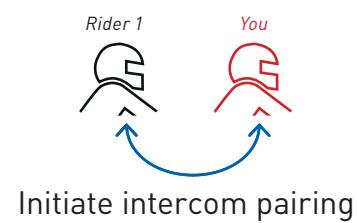
Bluetooth® / DMC
Change intercom mode

Verify that you are in Bluetooth® Mode

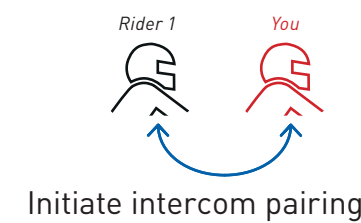


Bluetooth® / DMC
Change intercom mode

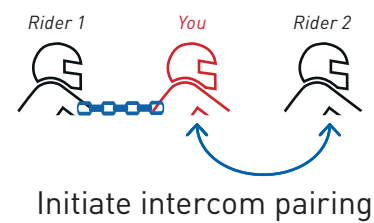
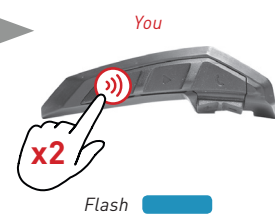
2-way pairing



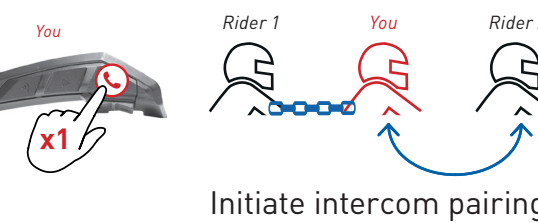
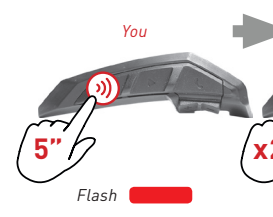
2-way pairing



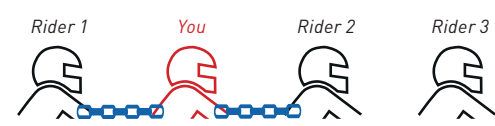
Adding 3rd rider



Adding 3rd rider

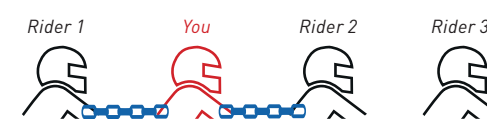


Adding 4th rider



Rider 2 connects to rider 3 on his free channel

Adding 4th rider



Rider 2 connects to rider 3 on his free channel

On



Off



On



Off



Previous



Next



Previous



Next



Auto scan



Stop scan



Start / Stop sharing
(when in Bluetooth® mode)



Measurements

front
90 mm

back
90 mm

180 mm



180 mm

OPERATED BY **NATURAL VOICE** POWERED BY **DMC** Bluetooth

cardo
communication in motion



cardosystems.com
support@cardosystems.com
USA & Canada: 1-800-488-0363
International: +49 89 450 36819

Register your device on cardosystems.com/update/ for


- Receive software update
- Customize the device
- ...and more!


CARDO MOBILE APP

- For easy configuration
- Remote control operation
- On-the-go setting customization
- Managing DMC groups
- Available on:


 Download on the App Store  ANDROID APP ON Google play

USER MANUAL

 Full version of the User manual available on cardosystems.com/support/agv.com

 **Dainese S.p.A.**
via Louvigny, 35
36064 Colceresa (VI),
Italy
ph.: +39 0424 410711
fax: +39 0424 410700
www.agv.com

MAN00514 MANUAL INSTALLATION GUIDE AGV - ENGLISH_A01



INSYDE_QSG_ENG_20200520

TYPE APPROVAL			
P/N	MAN00514		
DESCRIPTION	POCKET GUIDE		
FILE NAME	MAN00514 MANUAL INSTALLATION GUIDE AGV - ENGLISH_A01		
LANGUAGE	Multi Lang		
PRODUCT TYPE	MANUAL		
MATERIAL	P2 C4+4 80gr offset folded		
PRINTING PROCESS	COLOR: CMYK		
SECONDARY PROCESS	GLOSSY FINISH		
ATTACHED FILES	1. GRAPHIC FILE - PDF 2. Attached video for folding explanation		
MEASUREMENT	SPREAD: 360MM-540MM , FOLDED: 180MM-90MM		
CLIENTS/ DISTRIBUTOR	 		
SPECIAL REQUIREMENT	 		
REVISION	DESCRIPTION	DATE	NAME
A01	FINAL- first version	11.08.2020	DANNA