



TEST REPORT

FCC PART 15.249

Report Reference No.: **CTL1606222365-WF**

Compiled by: (position+printed name+signature)	Jacky Chen (File administrators)	<u>Jacky Chen</u>
Tested by: (position+printed name+signature)	Allen Wang (Test Engineer)	<u>Allen Wang</u>
Approved by: (position+printed name+signature)	Tracy Qi (Manager)	<u>Tracy Qi</u>

Product Name	ANC Bluetooth Headphone
Model/Type reference	BH800
List Model(s)	N/A
Trade Mark	W-king
FCC ID	Q8W-BH800
Applicant's name	SHENZHEN WEIKING TECHNOLOGY CO.,LTD
Address of applicant	W-king Technology Park, NO.431, Huating Road, Dalang Street, Longhua Town, Baoan District, Shenzhen City, China
Test Firm	Shenzhen CTL Testing Technology Co., Ltd.
Address of Test Firm	Floor 1-A, Baisha Technology Park, No.3011, Shaheqi Road, Nanshan District, Shenzhen, China 518055
Test specification	
Standard.....	FCC Part 15.249: Operation within the bands 920-928 MHz, 2400-2483.5 MHz, 5725-5850 MHz and 24.0 - 24.25 GHz.
TRF Originator	Shenzhen CTL Testing Technology Co., Ltd.
Master TRF	Dated 2011-01
Date of Receipt	June 22, 2016
Date of Test Date	June 23, 2016 – July 01, 2016
Data of Issue	July 02, 2016
Result	Pass

Shenzhen CTL Testing Technology Co., Ltd. All rights reserved.
This publication may be reproduced in whole or in part for non-commercial purposes as long as the Shenzhen CTL Testing Technology Co., Ltd. is acknowledged as copyright owner and source of the material. Shenzhen CTL Testing Technology Co., Ltd. takes no responsibility for and will not assume liability for damages resulting from the reader's interpretation of the reproduced material due to its placement and context.

TEST REPORT

Test Report No. :	CTL1606222365-WF	July 02, 2016 ----- Date of issue
--------------------------	-------------------------	---

Equipment under Test : ANC Bluetooth Headphone

Model /Type : BH800

Listed Models : N/A

Applicant : **SHENZHEN WEIKING TECHNOLOGY CO.,LTD**

Address : W-king Technology Park, NO.431, Huating Road, Dalang Street, Longhua Town, Baoan District, Shenzhen City, China

Manufacturer : **SHENZHEN WEIKING TECHNOLOGY CO.,LTD**

Address : W-king Technology Park, NO.431, Huating Road, Dalang Street, Longhua Town, Baoan District, Shenzhen City, China

Test result	Pass *
--------------------	---------------

* In the configuration tested, the EUT complied with the standards specified page 5.

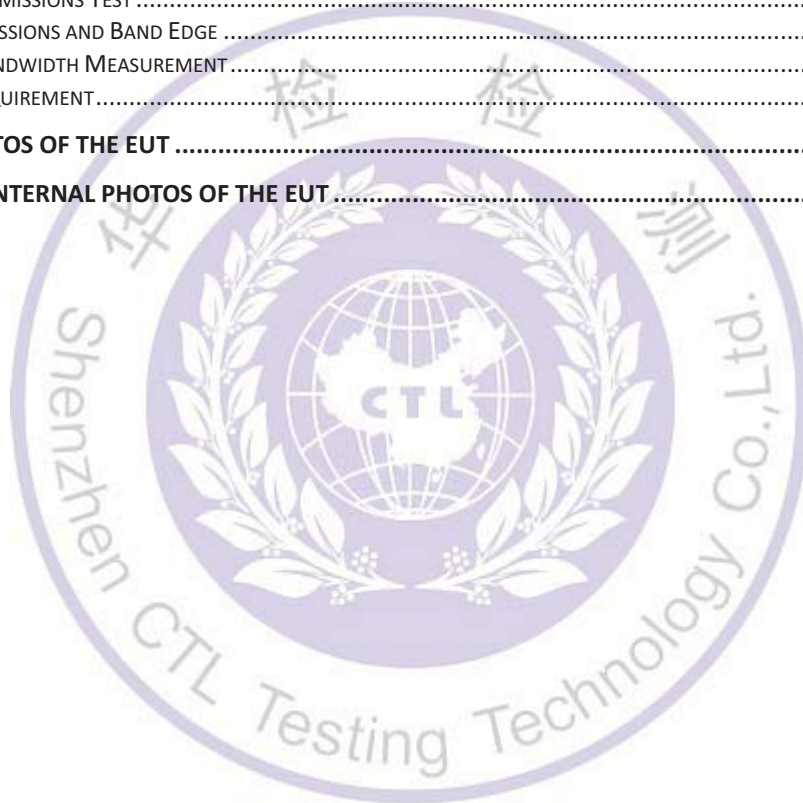
The test report merely corresponds to the test sample.

It is not permitted to copy extracts of these test result without the written permission of the test laboratory.

Table of Contents

Page

1. SUMMARY.....	5
1.1. TEST STANDARDS.....	5
1.2. TEST DESCRIPTION.....	5
1.3. TEST FACILITY.....	6
1.4. STATEMENT OF THE MEASUREMENT UNCERTAINTY.....	6
2. GENERAL INFORMATION.....	7
2.1. ENVIRONMENTAL CONDITIONS.....	7
2.2. GENERAL DESCRIPTION OF EUT.....	7
2.3. DESCRIPTION OF TEST MODES AND TEST FREQUENCY.....	8
2.4. EQUIPMENTS USED DURING THE TEST.....	9
2.5. RELATED SUBMITTAL(S) / GRANT(S).....	9
2.6. MODIFICATIONS.....	9
3. TEST CONDITIONS AND RESULTS.....	10
3.1. CONDUCTED EMISSIONS TEST.....	10
3.2. RADIATED EMISSIONS AND BAND EDGE.....	13
3.3. OCCUPIED BANDWIDTH MEASUREMENT.....	22
3.4. ANTENNA REQUIREMENT.....	27
4. TEST SETUP PHOTOS OF THE EUT.....	28
5. EXTERNAL AND INTERNAL PHOTOS OF THE EUT.....	29



1. SUMMARY

1.1. TEST STANDARDS

The tests were performed according to following standards:

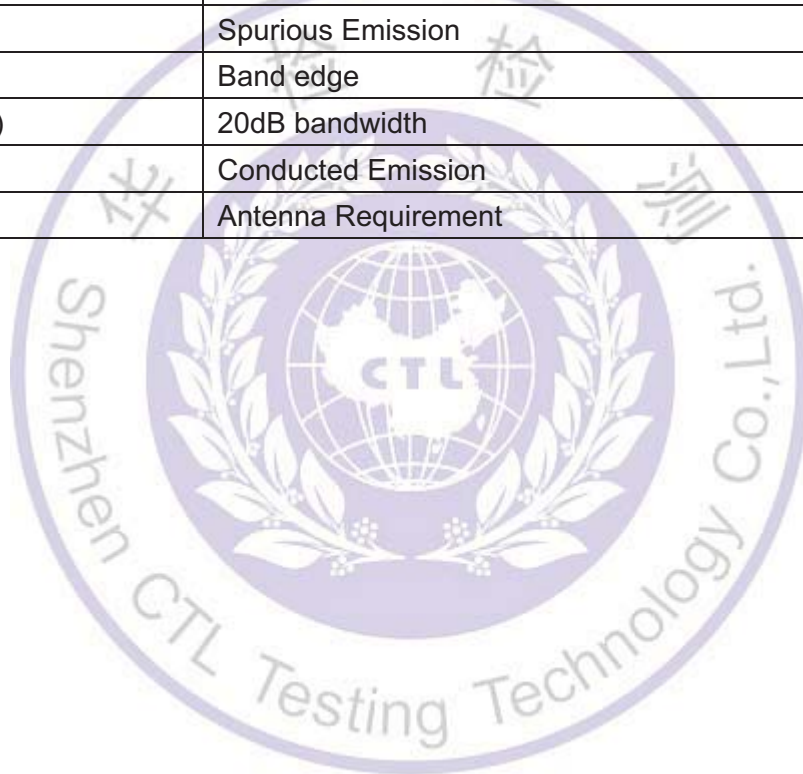
FCC Rules Part 15.249: Operation within the bands 902 - 928 MHz, 2400 - 2483.5 MHz, 5725 - 5875 MHz, and 24.0 - 24.25 GHz.

ANSI C63.10:2013 : American National Standard for Testing Unlicensed Wireless Devices

ANSI C63.4: 2014: –American National Standard for Methods of Measurement of Radio-Noise Emissions from Low-Voltage Electrical and Electronic Equipment in the Range of 9 kHz to 40GHz
Range of 9 kHz to 40GHz

1.2. Test Description

FCC PART 15.249		
FCC Part 15.249(a)	Field Strength of Fundamental	PASS
FCC Part 15.209	Spurious Emission	PASS
FCC Part 15.209	Band edge	PASS
FCC Part 15.215(c)	20dB bandwidth	PASS
FCC Part 15.207	Conducted Emission	PASS
FCC Part 15.203	Antenna Requirement	PASS



1.3. Test Facility

1.3.1 Address of the test laboratory

Shenzhen CTL Testing Technology Co., Ltd.

Floor 1-A, Baisha Technology Park, No. 3011, Shahexi Road, Nanshan, Shenzhen 518055 China

There is one 3m semi-anechoic chamber and two line conducted labs for final test. The Test Sites meet the requirements in documents ANSI C63.4 and CISPR 22/EN 55022 requirements.

1.3.2 Laboratory accreditation

The test facility is recognized, certified, or accredited by the following organizations:

IC Registration No.: 9618B

The 3m alternate test site of Shenzhen CTL Testing Technology Co., Ltd. EMC Laboratory has been registered by Certification and Engineer Bureau of Industry Canada for the performance of with Registration No.: 9618B on November 13, 2013.

FCC-Registration No.: 970318

Shenzhen CTL Testing Technology Co., Ltd. EMC Laboratory has been registered and fully described in a report filed with the (FCC) Federal Communications Commission. The acceptance letter from the FCC is maintained in our files. Registration 970318, December 19, 2013.

1.4. Statement of the measurement uncertainty

The data and results referenced in this document are true and accurate. The reader is cautioned that there may be errors within the calibration limits of the equipment and facilities. The measurement uncertainty was calculated for all measurements listed in this test report acc. to CISPR 16 - 4 „Specification for radio disturbance and immunity measuring apparatus and methods – Part 4: Uncertainty in EMC Measurements“ and is documented in the Shenzhen CTL Testing Technology Co., Ltd. quality system acc. to DIN EN ISO/IEC 17025. Furthermore, component and process variability of devices similar to that tested may result in additional deviation. The manufacturer has the sole responsibility of continued compliance of the device.

Hereafter the best measurement capability for CTL laboratory is reported:

Test	Range	Measurement Uncertainty	Notes
Radiated Emission	30~1000MHz	4.10dB	(1)
Radiated Emission	Above 1GHz	4.32dB	(1)
Conducted Disturbance	0.15~30MHz	3.20dB	(1)

(1) This uncertainty represents an expanded uncertainty expressed at approximately the 95% confidence level using a coverage factor of k=2.

2. GENERAL INFORMATION

2.1. Environmental conditions

During the measurement the environmental conditions were within the listed ranges:

Normal Temperature:	25°C
Relative Humidity:	55 %
Air Pressure:	101 kPa

2.2. General Description of EUT

Product Name:	ANC Bluetooth Headphone
Model/Type reference:	BH800
Power supply:	DC 3.7V from battery
Bluetooth	
Version:	Supported BT 3.0
Modulation:	GFSK, $\pi/4$ DQPSK, 8DPSK
Operation frequency:	2402MHz~2480MHz
Channel number:	79
Channel separation:	1MHz
Antenna type:	PCB Antenna
Antenna gain:	0dBi
Bluetooth	
Supported type:	Version 4.0 for low Energy
Modulation:	GFSK
Operation frequency:	2402MHz to 2480MHz
Channel number:	40
Channel separation:	2 MHz
Antenna type:	PCB Antenna
Antenna gain:	0dBi

Note: For more details, please refer to the user's manual of the EUT.

2.3. Description of Test Modes and Test Frequency

The Applicant provides communication tools software to control the EUT for staying in continuous transmitting (Duty Cycle more than 98%) and receiving mode for testing. There are 79 channels provided to the EUT and Channel 00/39/78 were selected for BT3.0 testing, and 40 channels provided to the EUT and Channel 00/19/39 were selected for BT4.0 testing.

Operation Frequency BT3.0 :

Channel	Frequency (MHz)
00	2402
01	2403
⋮	⋮
38	2440
39	2441
40	2442
⋮	⋮
77	2479
78	2480

Operation Frequency List BT4.0 :

Channel	Frequency (MHz)
00	2402
02	2404
03	2406
⋮	⋮
19	2440
⋮	⋮
37	2476
38	2478
39	2480

Note: The line display in grey is the channel selected to perform test.

2.4. Equipments Used during the Test

Test Equipment	Manufacturer	Model No.	Serial No.	Calibration Date	Calibration Due Date
LISN	R&S	ENV216	3560.6550.12	2016/06/02	2017/06/01
LISN	R&S	ESH2-Z5	860014/010	2016/06/02	2017/06/01
Bilog Antenna	Sunol Sciences Corp.	JB1	A061713	2016/06/02	2017/06/01
EMI Test Receiver	R&S	ESCI	103710	2016/06/02	2017/06/01
Spectrum Analyzer	Agilent	E4407B	MY41440676	2016/05/21	2017/05/20
Spectrum Analyzer	Agilent	N9020	US46220290	2016/01/17	2017/01/16
Controller	EM Electronics	Controller EM 1000	N/A	2016/05/21	2017/05/20
Horn Antenna	Sunol Sciences Corp.	DRH-118	A062013	2016/05/19	2017/05/18
Active Loop Antenna	SCHWARZBECK	FMZB1519	1519-037	2016/05/19	2017/05/18
Amplifier	Agilent	8349B	3008A02306	2016/05/19	2017/05/18
Amplifier	Agilent	8447D	2944A10176	2016/05/19	2017/05/18
Temperature/Humidity Meter	Gangxing	CTH-608	02	2016/05/20	2017/05/19
High-Pass Filter	K&L	9SH10-2700/X 12750-O/O	N/A	2016/05/20	2017/05/19
High-Pass Filter	K&L	41H10-1375/U 12750-O/O	N/A	2016/05/20	2017/05/19
Coaxial Cables	HUBER+SUHNER	SUCOFLEX 104PEA-10M	10m	2016/06/02	2017/06/01
Coaxial Cables	HUBER+SUHNER	SUCOFLEX 104PEA-3M	3m	2016/06/02	2017/06/01
Coaxial Cables	HUBER+SUHNER	SUCOFLEX 104PEA-3M	3m	2016/06/02	2017/06/01
RF Cable	Megalon	RF-A303	N/A	2016/06/02	2017/06/01

The calibration interval was one year

2.5. Related Submittal(s) / Grant(s)

This submittal(s) (test report) is intended to comply with Section 15.249 of the FCC Part 15, Subpart C Rules.

2.6. Modifications

No modifications were implemented to meet testing criteria.

3. TEST CONDITIONS AND RESULTS

3.1. Conducted Emissions Test

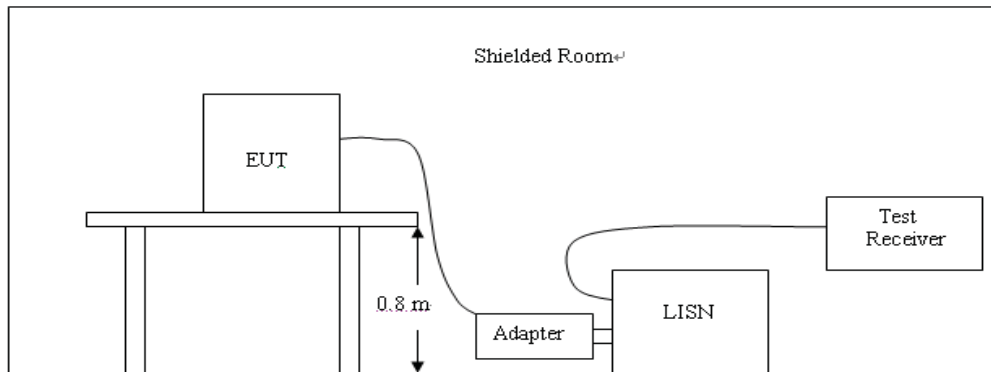
LIMIT

FCC CFR Title 47 Part 15 Subpart C Section 15.207

Frequency range (MHz)	Limit (dBuV)	
	Quasi-peak	Average
0.15-0.5	66 to 56*	56 to 46*
0.5-5	56	46
5-30	60	50

* Decreases with the logarithm of the frequency.

TEST CONFIGURATION



TEST PROCEDURE

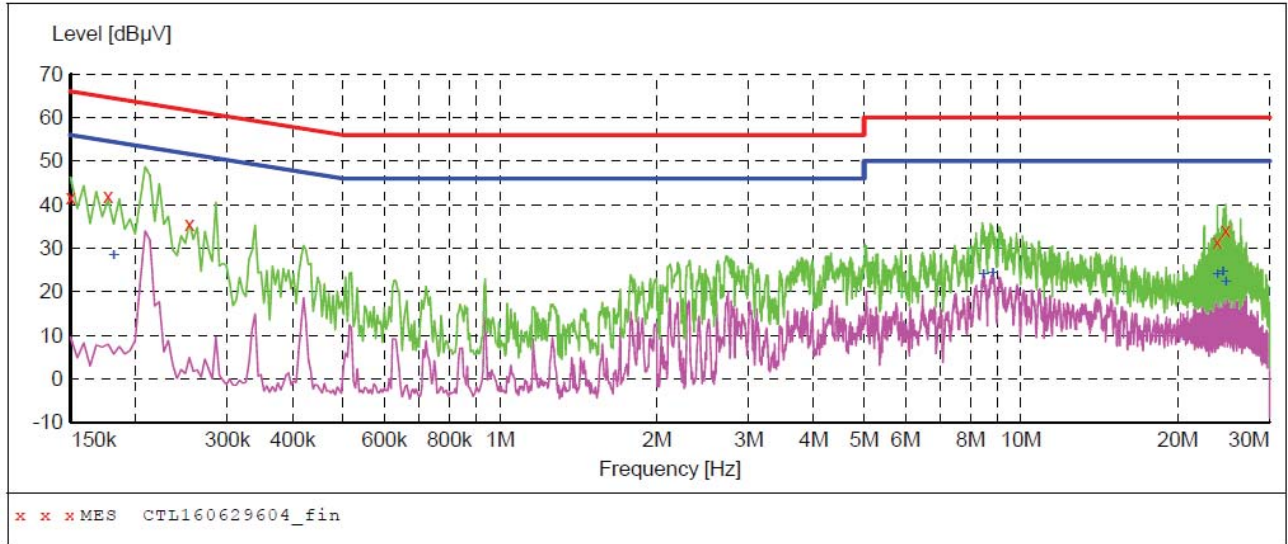
1. The equipment was set up as per the test configuration to simulate typical actual usage per the user's manual. The EUT is a tabletop system; a wooden table with a height of 0.8 meters is used and is placed on the ground plane as per ANSI C63.10:2013.
2. Support equipment, if needed, was placed as per ANSI C63.10:2013.
3. All I/O cables were positioned to simulate typical actual usage as per ANSI C63.10:2013.
4. If a EUT received DC power from the USB Port of Notebook PC, the PC's adapter received AC120V/60Hz power through a Line Impedance Stabilization Network (LISN) which supplied power source and was grounded to the ground plane.
5. All support equipments received AC power from a second LISN, if any.
6. The EUT test program was started. Emissions were measured on each current carrying line of the EUT using a spectrum Analyzer / Receiver connected to the LISN powering the EUT. The LISN has two monitoring points: Line 1 (Hot Side) and Line 2 (Neutral Side). Two scans were taken: one with Line 1 connected to Analyzer / Receiver and Line 2 connected to a 50 ohm load; the second scan had Line 1 connected to a 50 ohm load and Line 2 connected to the Analyzer / Receiver.
7. Analyzer / Receiver scanned from 150 KHz to 30MHz for emissions in each of the test modes.
8. During the above scans, the emissions were maximized by cable manipulation.

TEST RESULTS

Remark: All modes of GFSK, Pi/4 DQPSK, 8DPSK and BLE were test at Low, Middle, and High channel; only the worst result of 8DPSK High Channel was reported as below:

SCAN TABLE: "Voltage (9K-30M) FIN"

Short Description: 150K-30M Voltage



MEASUREMENT RESULT: "CTL160629604_fin"

6/29/2016 9:12PM

Frequency MHz	Level dBµV	Transd dB	Limit dBµV	Margin dB	Detector	Line	PE
0.150001	41.60	10.2	66	24.4	QP	L1	GND
0.177001	41.80	10.2	65	22.8	QP	L1	GND
0.253501	35.60	10.2	62	26.0	QP	L1	GND
23.820001	31.40	11.1	60	28.6	QP	L1	GND
24.729001	34.00	11.1	60	26.0	QP	L1	GND

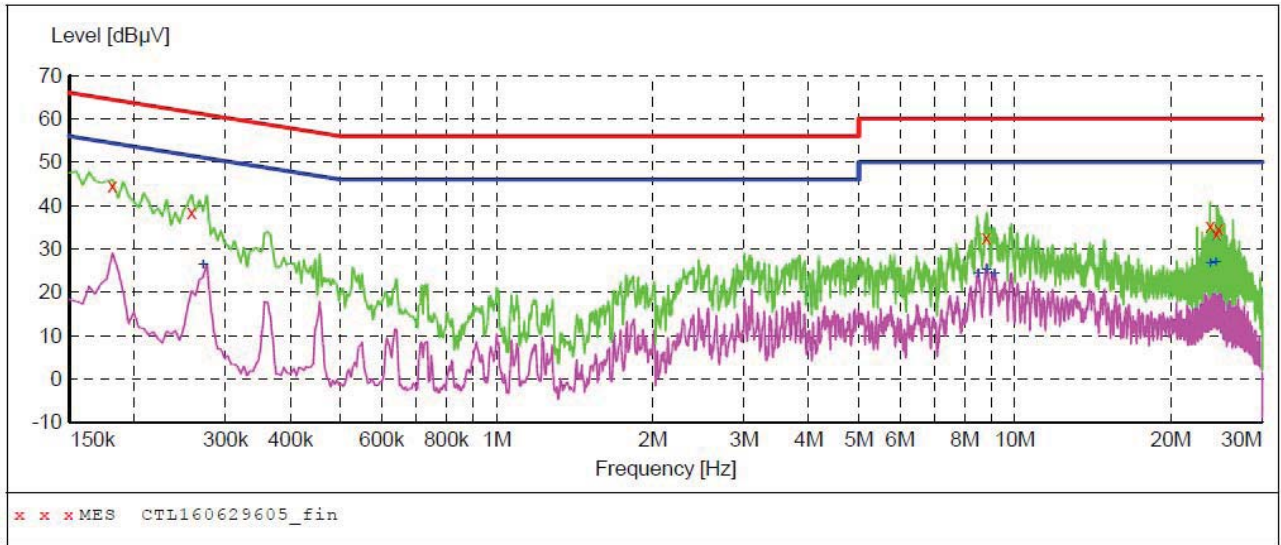
MEASUREMENT RESULT: "CTL160629604_fin2"

6/29/2016 9:12PM

Frequency MHz	Level dBµV	Transd dB	Limit dBµV	Margin dB	Detector	Line	PE
0.181501	28.30	10.2	54	26.1	AV	L1	GND
8.470501	24.00	10.6	50	26.0	AV	L1	GND
8.830501	24.30	10.6	50	25.7	AV	L1	GND
23.824501	23.90	11.1	50	26.1	AV	L1	GND
24.427501	24.60	11.1	50	25.4	AV	L1	GND
24.724501	22.10	11.1	50	27.9	AV	L1	GND

SCAN TABLE: "Voltage (9K-30M) FIN"

Short Description: 150K-30M Voltage



MEASUREMENT RESULT: "CTL160629605_fin"

6/29/2016 9:15PM

Frequency MHz	Level dBµV	Transd dB	Limit dBµV	Margin dB	Detector	Line	PE
0.181501	44.50	10.2	64	19.9	QP	N	GND
0.258001	38.40	10.2	62	23.1	QP	N	GND
8.808001	32.60	10.6	60	27.4	QP	N	GND
23.824501	35.10	11.1	60	24.9	QP	N	GND
24.486001	33.50	11.1	60	26.5	QP	N	GND
24.729001	34.70	11.1	60	25.3	QP	N	GND

MEASUREMENT RESULT: "CTL160629605_fin2"

6/29/2016 9:15PM

Frequency MHz	Level dBµV	Transd dB	Limit dBµV	Margin dB	Detector	Line	PE
0.271501	26.10	10.2	51	25.0	AV	N	GND
8.502001	24.10	10.6	50	25.9	AV	N	GND
8.803501	24.90	10.6	50	25.1	AV	N	GND
9.127501	24.10	10.6	50	25.9	AV	N	GND
23.824501	26.40	11.1	50	23.6	AV	N	GND
24.427501	26.80	11.1	50	23.2	AV	N	GND

3.2. Radiated Emissions and Band Edge

Limit

According 15.249, the field strength of emissions from intentional radiators operated within 2400MHz-2483.5 MHz shall not exceed 94dBμV/m (50mV/m):

FCC PART 15.249(d) Emissions radiated outside of the specified frequency bands, except for harmonics, shall be attenuated by at least 50 dB below the level of the fundamental or to the general radiated emission limits in §15.209, whichever is the lesser attenuation.

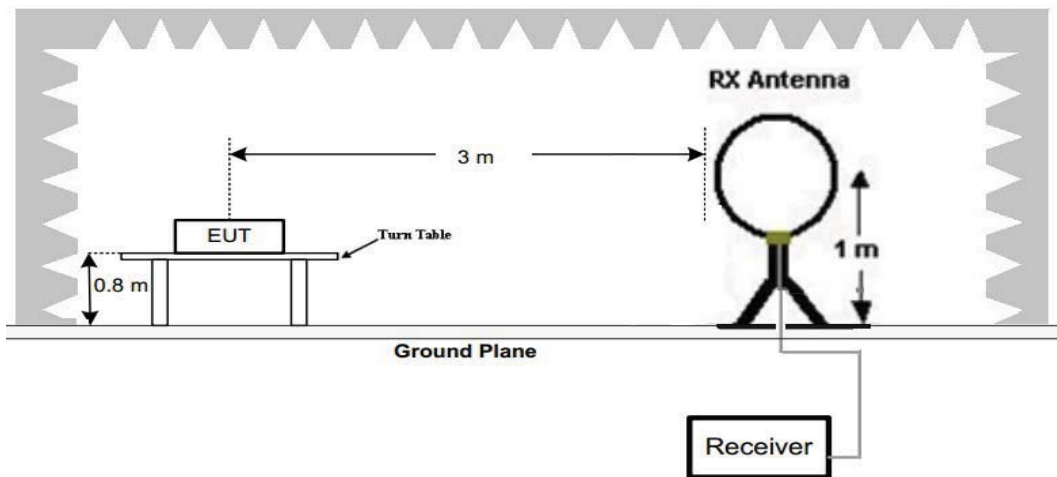
In addition, radiated emissions which fall in the restricted bands, as defined in §15.205(a), must also comply with the radiated emission limits specified in §15.209(a)

Radiated emission limits

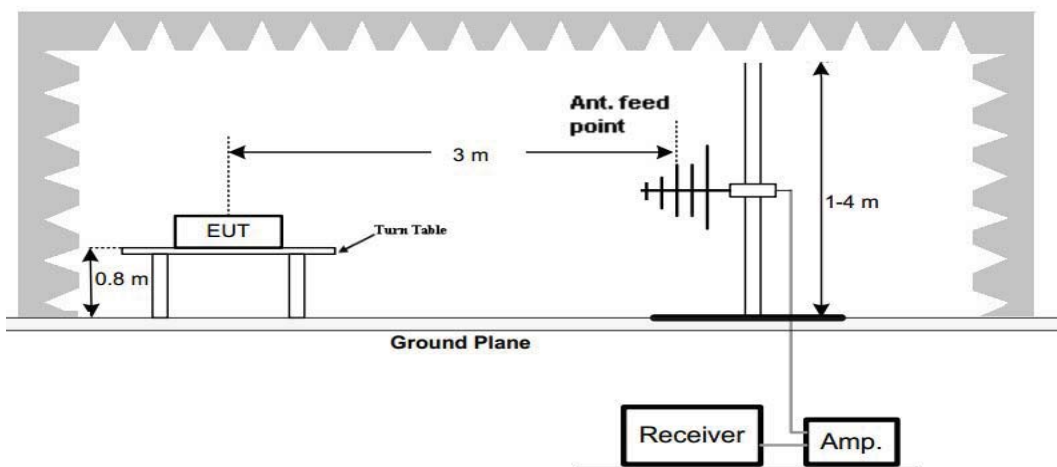
Frequency (MHz)	Distance (Meters)	Radiated (dBμV/m)	Radiated (μV/m)
0.009-0.49	3	$20\log(2400/F(\text{KHz}))+40\log(300/3)$	$2400/F(\text{KHz})$
0.49-1.705	3	$20\log(24000/F(\text{KHz}))+ 40\log(30/3)$	$24000/F(\text{KHz})$
1.705-30	3	$20\log(30)+ 40\log(30/3)$	30
30-88	3	40.0	100
88-216	3	43.5	150
216-960	3	46.0	200
Above 960	3	54.0	500

TEST CONFIGURATION

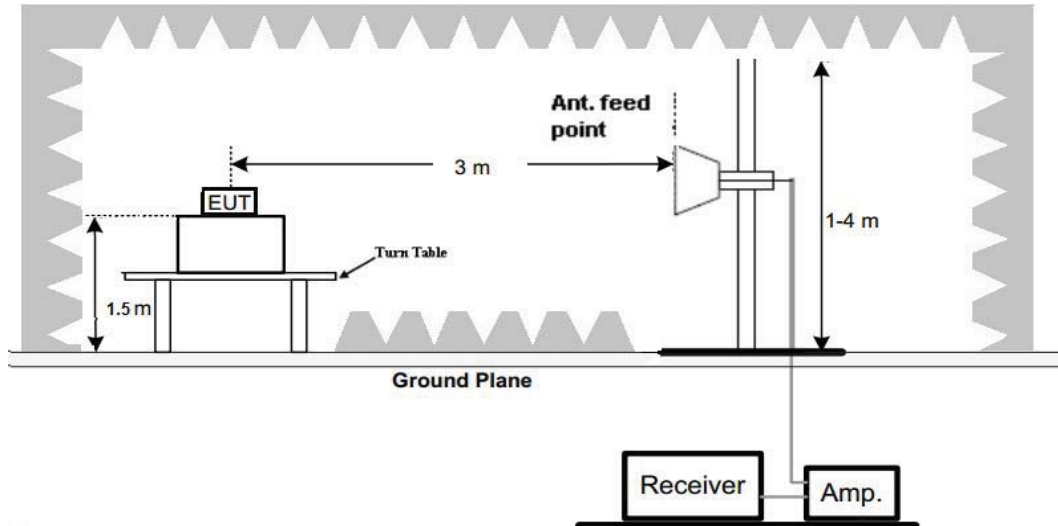
(A) Radiated Emission Test Set-Up, Frequency Below 30MHz



(B) Radiated Emission Test Set-Up, Frequency below 1000MHz



(C) Radiated Emission Test Set-Up, Frequency above 1000MHz

**Test Procedure**

1. Below 1GHz measurement the EUT is placed on a turntable which is 0.8m above ground plane, and above 1GHz measurement EUT was placed on a low permittivity and low loss tangent turn table which is 1.5m above ground plane.
2. Maximum procedure was performed by raising the receiving antenna from 1m to 4m and rotating the turn table from 0° to 360° to acquire the highest emissions from EUT
3. And also, each emission was to be maximized by changing the polarization of receiving antenna both horizontal and vertical.
4. Repeat above procedures until all frequency measurements have been completed.

TEST RESULTS

Remark:

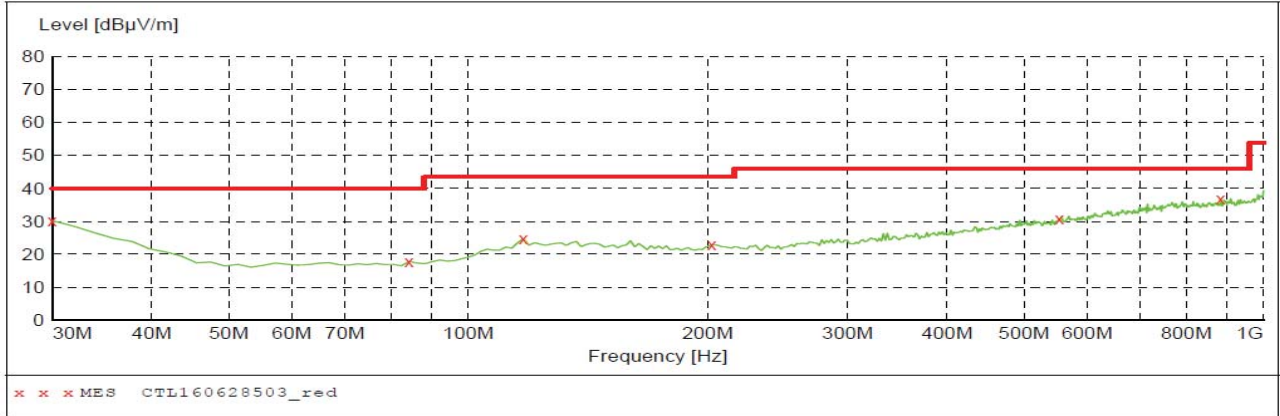
1. All modes of GFSK, Pi/4 DQPSK, 8DPSK and BLE were test at Low, Middle, and High channel; only the worst result of GFSK DH5 low Channel was reported for below 1GHz test.
2. For BT3.0 above 1GHz test all modes of GFSK, Pi/4 DQPSK, and 8DPSK were test at Low, Middle, and High channel; only the worst result of GFSK DH5 was reported.
3. By preliminary testing and verifying three axis (X, Y and Z) position of EUT transmitted status, it was found that "Z axis" position was the worst, and test data recorded in this report.
4. Radiated emission test from 9KHz to 10th harmonic of fundamental was verified, and no emission found except system noise floor in 9KHz to 30MHz and not recorded in this report.

For 30MHz-1GHz

Horizontal

SWEEP TABLE: "test (30M-1G)"

Short Description:		Field Strength			
Start	Stop	Detector	Meas.	IF	Transducer
Frequency	Frequency		Time	Bandw.	
30.0 MHz	1.0 GHz	MaxPeak	300.0 ms	120 kHz	JB1



MEASUREMENT RESULT: "CTL160628503_red"

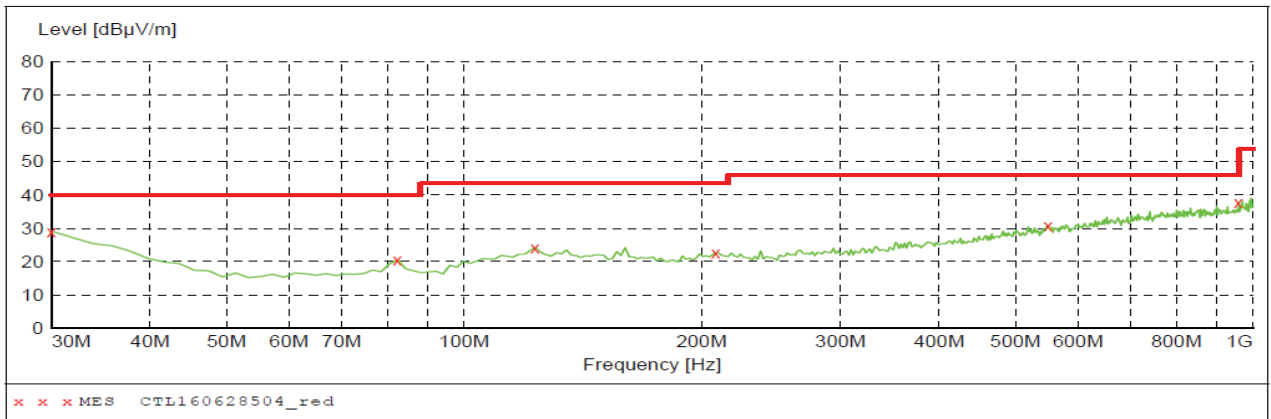
6/28/2016 9:41AM

Frequency MHz	Level dBuV/m	Transd dB	Limit dBuV/m	Margin dB	Det.	Height cm	Azimuth deg	Polarization
30.000000	30.20	20.8	40.0	9.8	---	0.0	0.00	HORIZONTAL
84.320000	17.80	8.8	40.0	22.2	---	0.0	0.00	HORIZONTAL
117.300000	24.70	14.7	43.5	18.8	---	0.0	0.00	HORIZONTAL
202.660000	22.90	14.1	43.5	20.6	---	0.0	0.00	HORIZONTAL
553.800000	30.80	21.0	46.0	15.2	---	0.0	0.00	HORIZONTAL
883.600000	36.90	25.6	46.0	9.1	---	0.0	0.00	HORIZONTAL

Vertical

SWEEP TABLE: "test (30M-1G)"

Short Description:		Field Strength			
Start	Stop	Detector	Meas.	IF	Transducer
Frequency	Frequency		Time	Bandw.	
30.0 MHz	1.0 GHz	MaxPeak	300.0 ms	120 kHz	JB1



MEASUREMENT RESULT: "CTL160628504_red"

6/28/2016 9:42AM

Frequency MHz	Level dBuV/m	Transd dB	Limit dBuV/m	Margin dB	Det.	Height cm	Azimuth deg	Polarization
30.000000	29.10	20.8	40.0	10.9	---	0.0	0.00	VERTICAL
82.380000	20.60	8.7	40.0	19.4	---	0.0	0.00	VERTICAL
123.120000	24.20	14.6	43.5	19.3	---	0.0	0.00	VERTICAL
208.480000	22.60	14.0	43.5	20.9	---	0.0	0.00	VERTICAL
549.920000	30.90	21.0	46.0	15.1	---	0.0	0.00	VERTICAL
959.260000	37.60	26.6	46.0	8.4	---	0.0	0.00	VERTICAL

For 1GHz to 25GHz

BT3.0 GFSK Mode (above 1GHz)

Frequency(MHz):				2402		Polarity:			HORIZONTAL	
No.	Frequency (MHz)	Emission Level (dBuV/m)		Limit (dBuV/m)	Margin (dB)	Raw Value (dBuV)	Antenna Factor (dB/m)	Cable Factor (dB)	Pre-amplifier (dB)	Correction Factor (dB/m)
1	2402.00	96.89	PK	114	17.11	63.49	28.78	4.61	0.00	33.40
1	2402.00	90.58	AV	94	3.42	57.18	28.78	4.61	0.00	33.40
2	2390.00	40.25	PK	74	33.75	6.93	28.72	4.60	0.00	33.32
2	2390.00	--	AV	54	--	--	--	--	--	--
3	2400.00	47.85	PK	74	26.15	14.46	28.78	4.61	0.00	33.39
3	2400.00	--	AV	54	--	--	--	--	--	--
4	4804.00	56.29	PK	74	17.71	51.78	33.49	6.91	35.89	4.51
4	4804.00	47.85	AV	54	6.15	43.34	33.49	6.91	35.89	4.51
5	5105.25	43.11	PK	74	30.89	35.94	34.34	7.09	34.27	7.17
5	5105.25	--	AV	54	--	--	--	--	--	--
6	7206.00	48.91	PK	74	25.09	37.80	36.95	9.18	35.03	11.11
6	7206.00	--	AV	54	--	--	--	--	--	--

Frequency(MHz):				2402		Polarity:			VERTICAL	
No.	Frequency (MHz)	Emission Level (dBuV/m)		Limit (dBuV/m)	Margin (dB)	Raw Value (dBuV)	Antenna Factor (dB/m)	Cable Factor (dB)	Pre-amplifier (dB)	Correction Factor (dB/m)
1	2402.00	97.04	PK	114	16.96	63.64	28.78	4.61	0.00	33.40
1	2402.00	91.41	AV	94	2.59	58.01	28.78	4.61	0.00	33.40
2	2390.00	40.25	PK	74	33.75	6.93	28.72	4.60	0.00	33.32
2	2390.00	--	AV	54	--	--	--	--	--	--
3	2400.00	48.25	PK	74	25.75	14.86	28.78	4.61	0.00	33.39
3	2400.00	--	AV	54	--	--	--	--	--	--
4	4804.00	56.63	PK	74	17.37	52.12	33.49	6.91	35.89	4.51
4	4804.00	47.42	AV	54	6.58	42.91	33.49	6.91	35.89	4.51
5	5275.50	43.33	PK	74	30.67	35.86	34.62	7.19	34.33	7.47
5	5275.50	--	AV	54	--	--	--	--	--	--
6	7206.00	47.15	PK	74	26.85	36.04	36.95	9.18	35.03	11.11
6	7206.00	--	AV	54	--	--	--	--	--	--

REMARKS:

1. Emission level (dBuV/m) =Raw Value (dBuV)+Correction Factor (dB/m)
2. Correction Factor (dB/m) = Antenna Factor (dB/m)+Cable Factor (dB)-Pre-amplifier Factor
3. Margin value = Limit value- Emission level.
4. -- Mean the PK detector measured value is below average limit.
5. The other emission levels were very low against the limit.
6. RBW1MHz VBW3MHz Peak detector is for PK value; RBW 1MHz VBW10Hz Peak detector is for AV value.
7. For fundamental frequency, RBW 3MHz VBW 3MHz Peak detector is for PK Value ; RMS detector is for AV value.

Frequency(MHz):				2441		Polarity:			HORIZONTAL	
No.	Frequency (MHz)	Emission Level (dBuV/m)		Limit (dBuV/m)	Margin (dB)	Raw Value (dBuV)	Antenna Factor (dB/m)	Cable Factor (dB)	Pre-amplifier (dB)	Correction Factor (dB/m)
1	2441.00	96.22	PK	114	17.78	62.71	28.85	4.66	0.00	33.51
1	2441.00	90.58	AV	94	3.42	57.07	28.85	4.66	0.00	33.51
2	3986.25	42.36	PK	74	31.64	37.65	33.14	6.38	34.81	4.71
2	3986.25	--	AV	54	--	--	--	--	--	--
3	4882.00	56.85	PK	74	17.15	50.49	33.60	6.95	34.19	6.36
3	4882.00	49.61	AV	54	4.39	43.25	33.60	6.95	34.19	6.36
4	5375.50	42.21	PK	74	31.79	34.27	34.72	7.25	34.02	7.94
4	5375.50	--	AV	54	--	--	--	--	--	--
5	7323.00	42.74	PK	74	31.26	31.04	37.46	9.23	35.00	11.70
5	7323.00	--	AV	54	--	--	--	--	--	--

Frequency(MHz):				2441		Polarity:			VERTICAL	
No.	Frequency (MHz)	Emission Level (dBuV/m)		Limit (dBuV/m)	Margin (dB)	Raw Value (dBuV)	Antenna Factor (dB/m)	Cable Factor (dB)	Pre-amplifier (dB)	Correction Factor (dB/m)
1	2441.00	97.11	PK	114	16.89	63.60	28.85	4.66	0.00	33.51
1	2441.00	90.36	AV	94	3.64	56.85	28.85	4.66	0.00	33.51
2	4125.75	42.65	PK	74	31.35	38.09	32.81	6.48	34.73	4.56
2	4125.75	--	AV	54	--	--	--	--	--	--
3	4882.00	56.74	PK	74	17.26	50.48	33.60	6.95	34.30	6.26
3	4882.00	50.25	AV	54	3.75	43.99	33.60	6.95	34.30	6.26
4	5355.50	40.66	PK	74	33.34	32.76	34.70	7.23	34.03	7.90
4	5355.50	--	AV	54	--	--	--	--	--	--
5	7323.00	42.54	PK	74	31.46	30.84	37.46	9.23	35.00	11.70
5	7323.00	--	AV	54	--	--	--	--	--	--

REMARKS:

1. Emission level (dBuV/m) =Raw Value (dBuV)+Correction Factor (dB/m)
2. Correction Factor (dB/m) = Antenna Factor (dB/m)+Cable Factor (dB)-Pre-amplifier Factor
3. Margin value = Limit value- Emission level.
4. -- Mean the PK detector measured value is below average limit.
5. The other emission levels were very low against the limit.
6. RBW1MHz VBW3MHz Peak detector is for PK value; RBW 1MHz VBW10Hz Peak detector is for AV value.
7. For fundamental frequency, RBW 3MHz VBW 3MHz Peak detector is for PK Value ; RMS detector is for AV value.

Frequency(MHz):				2480		Polarity:			HORIZONTAL	
No.	Frequency (MHz)	Emission Level (dBuV/m)		Limit (dBuV/m)	Margin (dB)	Raw Value (dBuV)	Antenna Factor (dB/m)	Cable Factor (dB)	Pre-amplifier (dB)	Correction Factor (dB/m)
1	2480.00	97.14	PK	114	16.86	63.52	28.92	4.70	0.00	33.62
1	2480.00	90.56	AV	94	3.44	56.94	28.92	4.70	0.00	33.62
2	2483.50	45.69	PK	74	28.31	12.06	28.93	4.70	0.00	33.63
2	2483.50	--	AV	54	--	--	--	--	--	--
3	2500.00	40.58	PK	74	33.42	6.90	28.96	4.72	0.00	33.68
3	2500.00	--	AV	54	--	--	--	--	--	--
4	4960.00	55.87	PK	74	18.13	50.95	33.84	7.00	35.92	4.92
4	4960.00	46.36	AV	54	7.64	41.44	33.84	7.00	35.92	4.92
5	5025.75	43.78	PK	74	30.22	36.90	34.07	7.05	34.24	6.88
5	5025.75	--	AV	54	--	--	--	--	--	--
6	7440.00	40.25	PK	74	33.75	28.30	37.64	9.28	34.97	11.95
6	7440.00	--	AV	54	--	--	--	--	--	--

Frequency(MHz):				2480		Polarity:			VERTICAL	
No.	Frequency (MHz)	Emission Level (dBuV/m)		Limit (dBuV/m)	Margin (dB)	Raw Value (dBuV)	Antenna Factor (dB/m)	Cable Factor (dB)	Pre-amplifier (dB)	Correction Factor (dB/m)
1	2480.00	96.96	PK	114	17.04	63.34	28.92	4.70	0.00	33.62
1	2480.00	89.88	AV	94	4.12	56.26	28.92	4.70	0.00	33.62
2	2483.50	45.25	PK	74	28.75	11.62	28.93	4.70	0.00	33.63
2	2483.50	--	AV	54	--	--	--	--	--	--
3	2500.00	41.20	PK	74	32.8	7.52	28.96	4.72	0.00	33.68
3	2500.00	--	AV	54	--	--	--	--	--	--
4	4960.00	56.98	PK	74	17.02	52.06	33.84	7.00	35.92	4.92
4	4960.00	47.58	AV	54	6.42	42.66	33.84	7.00	35.92	4.92
5	5184.50	43.22	PK	74	30.78	35.88	34.51	7.13	34.30	7.34
5	5184.50	--	AV	54	--	--	--	--	--	--
6	7440.00	42.50	PK	74	31.5	30.55	37.64	9.28	34.97	11.95
6	7440.00	--	AV	54	--	--	--	--	--	--

REMARKS:

1. Emission level (dBuV/m) =Raw Value (dBuV)+Correction Factor (dB/m)
2. Correction Factor (dB/m) = Antenna Factor (dB/m)+Cable Factor (dB)-Pre-amplifier Factor
3. Margin value = Limit value- Emission level.
4. -- Mean the PK detector measured value is below average limit.
5. The other emission levels were very low against the limit.
6. RBW1MHz VBW3MHz Peak detector is for PK value; RBW 1MHz VBW10Hz Peak detector is for AV value.
7. For fundamental frequency, RBW 3MHz VBW 3MHz Peak detector is for PK Value ; RMS detector is for AV value.

BT4.0 GFSK Mode (above 1GHz)

Frequency(MHz):				2402		Polarity:			HORIZONTAL	
No.	Frequency (MHz)	Emission Level (dBUV/m)		Limit (dBUV/m)	Margin (dB)	Raw Value (dBUV)	Antenna Factor (dB/m)	Cable Factor (dB)	Pre-amplifier (dB)	Correction Factor (dB/m)
1	2402.00	89.36	PK	114	24.64	55.96	28.78	4.61	0.00	33.40
1	2402.00	78.58	AV	94	15.42	45.18	28.78	4.61	0.00	33.40
2	2390.00	36.74	PK	74	37.26	3.42	28.72	4.60	0.00	33.32
2	2390.00	--	AV	54	--	--	--	--	--	--
3	2400.00	39.25	PK	74	34.75	5.86	28.78	4.61	0.00	33.39
3	2400.00	--	AV	54	--	--	--	--	--	--
4	4804.00	47.33	PK	74	26.67	42.82	33.49	6.91	35.89	4.51
4	4804.00	--	AV	54	--	--	--	--	--	--
5	5033.50	44.52	PK	74	29.48	37.61	34.10	7.05	34.24	6.91
5	5033.50	--	AV	54	--	--	--	--	--	--
6	7206.00	45.69	PK	74	28.31	34.58	36.95	9.18	35.03	11.11
6	7206.00	--	AV	54	--	--	--	--	--	--

Frequency(MHz):				2402		Polarity:			VERTICAL	
No.	Frequency (MHz)	Emission Level (dBUV/m)		Limit (dBUV/m)	Margin (dB)	Raw Value (dBUV)	Antenna Factor (dB/m)	Cable Factor (dB)	Pre-amplifier (dB)	Correction Factor (dB/m)
1	2402.00	88.47	PK	114	25.53	55.07	28.78	4.61	0.00	33.40
1	2402.00	80.36	AV	94	13.64	46.96	28.78	4.61	0.00	33.40
2	2390.00	37.52	PK	74	36.48	4.20	28.72	4.60	0.00	33.32
2	2390.00	--	AV	54	--	--	--	--	--	--
3	2400.00	40.25	PK	74	33.75	6.86	28.78	4.61	0.00	33.39
3	2400.00	--	AV	54	--	--	--	--	--	--
4	4804.00	45.22	PK	74	28.78	40.71	33.49	6.91	35.89	4.51
4	4804.00	--	AV	54	--	--	--	--	--	--
5	5115.75	40.74	PK	74	33.26	33.55	34.36	7.10	34.27	7.19
5	5115.75	--	AV	54	--	--	--	--	--	--
6	7206.00	39.84	PK	74	34.16	28.73	36.95	9.18	35.03	11.11
6	7206.00	--	AV	54	--	--	--	--	--	--

REMARKS:

1. Emission level (dBUV/m) =Raw Value (dBUV)+Correction Factor (dB/m)
2. Correction Factor (dB/m) = Antenna Factor (dB/m)+Cable Factor (dB)-Pre-amplifier Factor
3. Margin value = Limit value- Emission level.
4. -- Mean the PK detector measured value is below average limit.
5. The other emission levels were very low against the limit.
6. RBW1MHz VBW3MHz Peak detector is for PK value; RBW 1MHz VBW10Hz Peak detector is for AV value.
7. For fundamental frequency, RBW 3MHz VBW 3MHz Peak detector is for PK Value ; RMS detector is for AV value.

Frequency(MHz):				2440		Polarity:			HORIZONTAL	
No.	Frequency (MHz)	Emission Level (dBuV/m)		Limit (dBuV/m)	Margin (dB)	Raw Value (dBuV)	Antenna Factor (dB/m)	Cable Factor (dB)	Pre-amplifier (dB)	Correction Factor (dB/m)
1	2440.00	89.11	PK	114	24.89	55.60	28.85	4.65	0.00	33.51
1	2440.00	80.22	AV	94	13.78	46.71	28.85	4.65	0.00	33.51
2	3966.50	36.36	PK	74	37.64	31.65	33.18	6.36	34.82	4.71
2	3966.50	--	AV	54	--	--	--	--	--	--
3	4880.00	40.47	PK	74	33.53	34.11	33.60	6.95	34.19	6.36
3	4880.00	--	AV	54	--	--	--	--	--	--
4	5175.25	42.78	PK	74	31.22	35.29	34.49	7.13	34.13	7.49
4	5175.25	--	AV	54	--	--	--	--	--	--
5	7320.00	45.66	PK	74	28.34	33.97	37.46	9.23	35.00	11.69
5	7320.00	--	AV	54	--	--	--	--	--	--

Frequency(MHz):				2440		Polarity:			VERTICAL	
No.	Frequency (MHz)	Emission Level (dBuV/m)		Limit (dBuV/m)	Margin (dB)	Raw Value (dBuV)	Antenna Factor (dB/m)	Cable Factor (dB)	Pre-amplifier (dB)	Correction Factor (dB/m)
1	2440.00	89.14	PK	114	24.86	55.63	28.85	4.65	0.00	33.51
1	2440.00	81.52	AV	94	12.48	48.01	28.85	4.65	0.00	33.51
2	4478.25	39.36	PK	74	34.64	34.32	32.86	6.70	34.53	5.04
2	4478.25	--	AV	54	--	--	--	--	--	--
3	4880.00	43.70	PK	74	30.3	37.45	33.60	6.95	34.30	6.25
3	4880.00	--	AV	54	--	--	--	--	--	--
4	5311.75	41.35	PK	74	32.65	33.54	34.65	7.21	34.05	7.81
4	5311.75	--	AV	54	--	--	--	--	--	--
5	7320.00	42.41	PK	74	31.59	30.72	37.46	9.23	35.00	11.69
5	7320.00	--	AV	54	--	--	--	--	--	--

REMARKS:

1. Emission level (dBuV/m) =Raw Value (dBuV)+Correction Factor (dB/m)
2. Correction Factor (dB/m) = Antenna Factor (dB/m)+Cable Factor (dB)-Pre-amplifier Factor
3. Margin value = Limit value- Emission level.
4. -- Mean the PK detector measured value is below average limit.
5. The other emission levels were very low against the limit.
6. RBW1MHz VBW3MHz Peak detector is for PK value; RBW 1MHz VBW10Hz Peak detector is for AV value.
7. For fundamental frequency, RBW 3MHz VBW 3MHz Peak detector is for PK Value ; RMS detector is for AV value.

Frequency(MHz):				2480		Polarity:			HORIZONTAL	
No.	Frequency (MHz)	Emission Level (dBuV/m)		Limit (dBuV/m)	Margin (dB)	Raw Value (dBuV)	Antenna Factor (dB/m)	Cable Factor (dB)	Pre-amplifier (dB)	Correction Factor (dB/m)
1	2480.00	89.33	PK	114	24.67	55.71	28.92	4.70	0.00	33.62
1	2480.00	81.52	AV	94	12.48	47.90	28.92	4.70	0.00	33.62
2	2483.50	39.63	PK	74	34.37	6.00	28.93	4.70	0.00	33.63
2	2483.50	--	AV	54	--	--	--	--	--	--
3	2500.00	35.41	PK	74	38.59	1.73	28.96	4.72	0.00	33.68
3	2500.00	--	AV	54	--	--	--	--	--	--
4	4960.00	48.52	PK	74	25.48	43.60	33.84	7.00	35.92	4.92
4	4960.00	--	AV	54	--	--	--	--	--	--
5	5224.75	43.84	PK	74	30.16	36.43	34.56	7.15	34.31	7.41
5	5224.75	--	AV	54	--	--	--	--	--	--
6	7440.00	40.20	PK	74	33.8	28.25	37.64	9.28	34.97	11.95
6	7440.00	--	AV	54	--	--	--	--	--	--

Frequency(MHz):				2480		Polarity:			VERTICAL	
No.	Frequency (MHz)	Emission Level (dBuV/m)		Limit (dBuV/m)	Margin (dB)	Raw Value (dBuV)	Antenna Factor (dB/m)	Cable Factor (dB)	Pre-amplifier (dB)	Correction Factor (dB/m)
1	2480.00	88.87	PK	114	25.13	55.25	28.92	4.70	0.00	33.62
1	2480.00	78.63	AV	94	15.37	45.01	28.92	4.70	0.00	33.62
2	2483.50	38.41	PK	74	35.59	4.78	28.93	4.70	0.00	33.63
2	2483.50	--	AV	54	--	--	--	--	--	--
3	2500.00	37.52	PK	74	36.48	3.84	28.96	4.72	0.00	33.68
3	2500.00	--	AV	54	--	--	--	--	--	--
4	4960.00	45.36	PK	74	28.64	40.44	33.84	7.00	35.92	4.92
4	4960.00	--	AV	54	--	--	--	--	--	--
5	5211.52	40.14	PK	74	33.86	32.75	34.55	7.15	34.31	7.39
5	5211.52	--	AV	54	--	--	--	--	--	--
6	7440.00	44.58	PK	74	29.42	32.63	37.64	9.28	34.97	11.95
6	7440.00	--	AV	54	--	--	--	--	--	--

REMARKS:

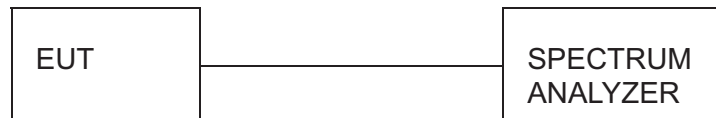
1. Emission level (dBuV/m) =Raw Value (dBuV)+Correction Factor (dB/m)
2. Correction Factor (dB/m) = Antenna Factor (dB/m)+Cable Factor (dB)-Pre-amplifier Factor
3. Margin value = Limit value- Emission level.
4. -- Mean the PK detector measured value is below average limit.
5. The other emission levels were very low against the limit.
6. RBW1MHz VBW3MHz Peak detector is for PK value; RBW 1MHz VBW10Hz Peak detector is for AV value.
7. For fundamental frequency, RBW 3MHz VBW 3MHz Peak detector is for PK Value ; RMS detector is for AV value.

3.3. Occupied Bandwidth Measurement

Limit

N/A

Test Configuration



Test Procedure

The transmitter output was connected to the spectrum analyzer through an attenuator. The bandwidth of the fundamental frequency was measured by spectrum analyzer with 30 KHz RBW and 100 KHz VBW.

The 20dB bandwidth is defined as the total spectrum the power of which is higher than peak power minus 20dB. Peak detector is used

Test Results

BT3.0

Modulation	Channel	99% OBW (MHz)	20dB bandwidth (MHz)	Result
GFSK	CH00	0.838	0.823	Pass
	CH39	0.839	0.826	
	CH78	0.835	0.824	
$\pi/4$ DQPSK	CH00	1.070	1.112	
	CH39	1.069	1.110	
	CH78	1.070	1.117	
8DPSK	CH00	1.070	1.114	
	CH39	1.047	1.111	
	CH78	1.069	1.124	

BT4.0

Modulation	Channel	99% OBW (MHz)	20dB bandwidth (MHz)	Result
GFSK	CH00	1.035	1.139	Pass
	CH19	1.034	1.136	
	CH39	1.034	1.136	

20dB BW worse case test plot as follows:

BT4.0
GFSK Modulation



CH00



CH19



CH39

3.4. Antenna Requirement

Standard Applicable

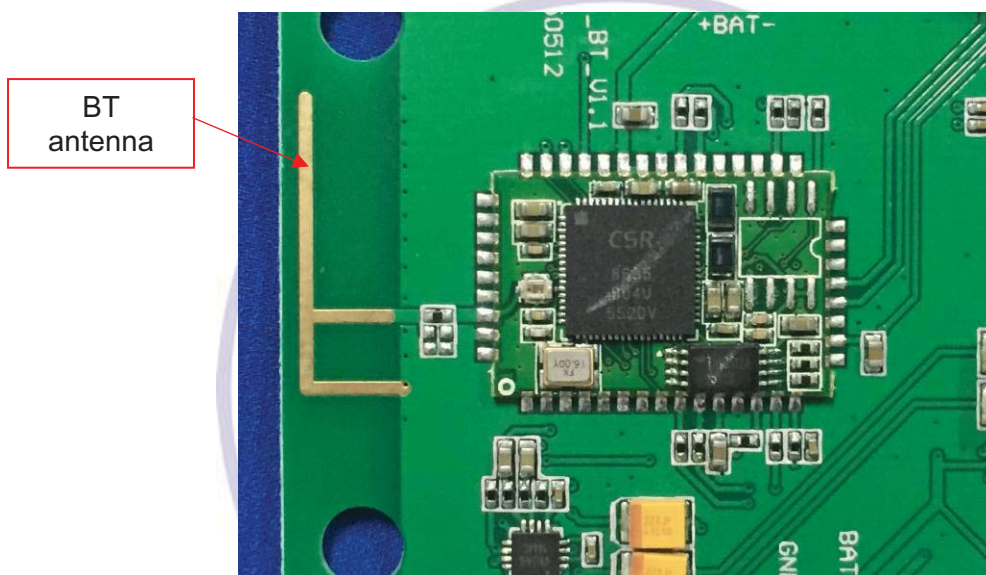
For intentional device, according to FCC 47 CFR Section 15.203, an intentional radiator shall be designed to ensure that no antenna other than that furnished by the responsible party shall be used with the device.

Refer to statement below for compliance.

The manufacturer may design the unit so that the user can replace a broken antenna, but the use of a standard antenna jack or electrical connector is prohibited. Further, this requirement does not apply to intentional radiators that must be professionally installed.

Antenna Connected Construction

The antenna used in this product is an internal Antenna, The directional gains of antenna used for transmitting is 0 dBi.



4. Test Setup Photos of the EUT



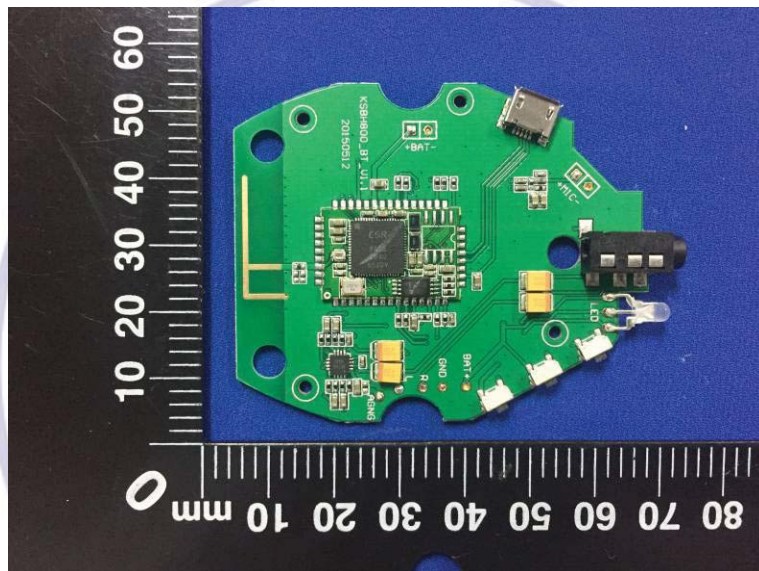
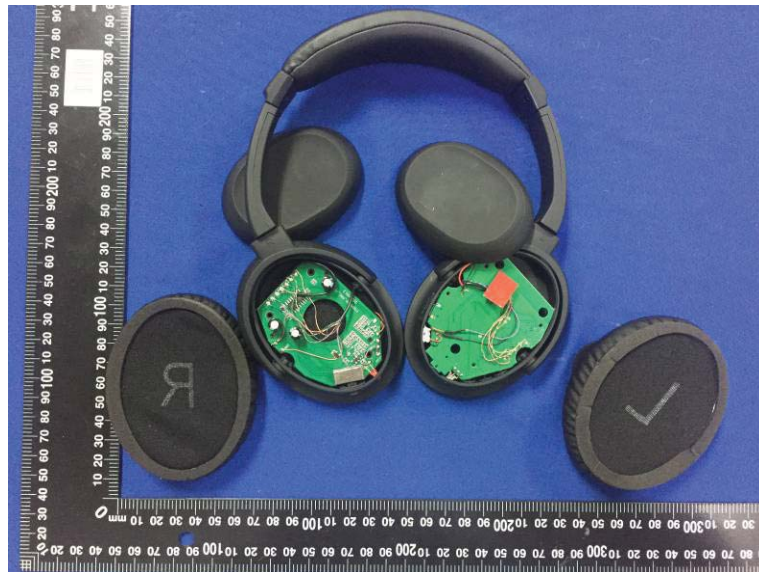
5. External and Internal Photos of the EUT

External Photos of EUT

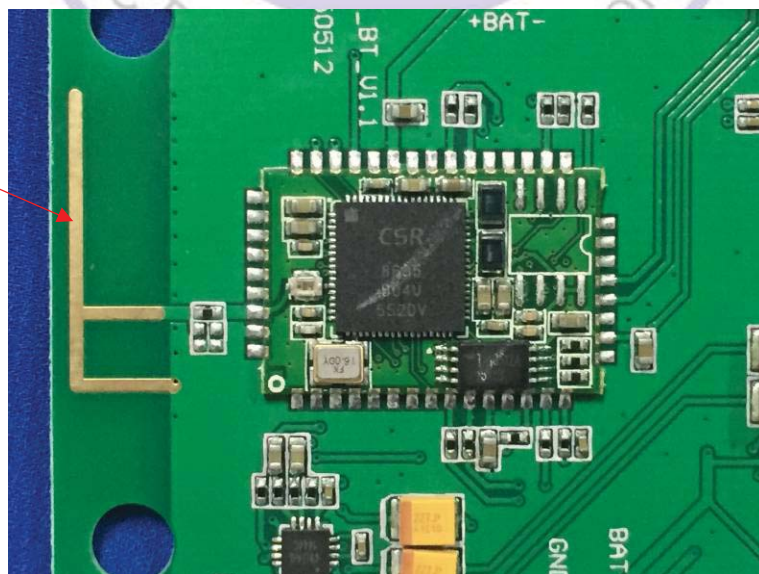


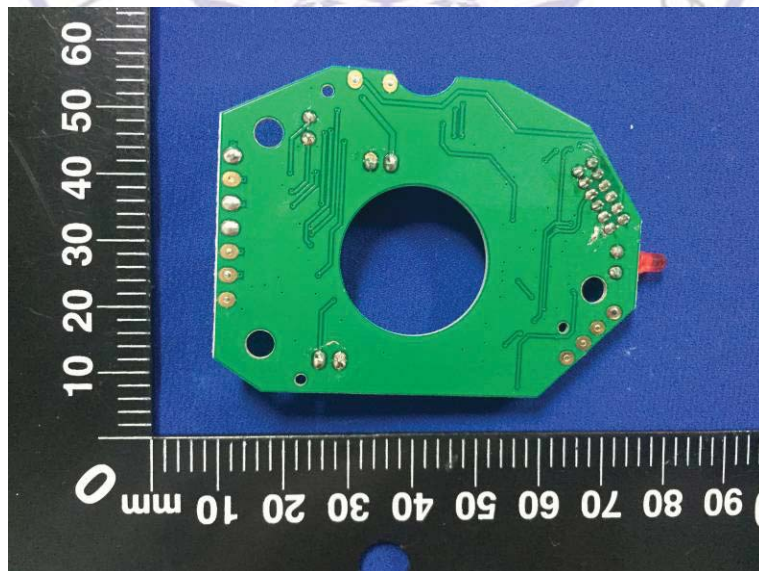
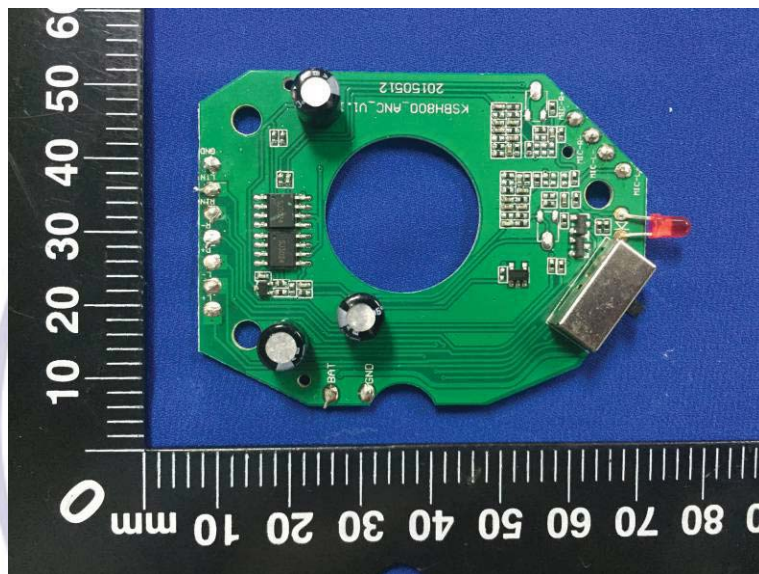
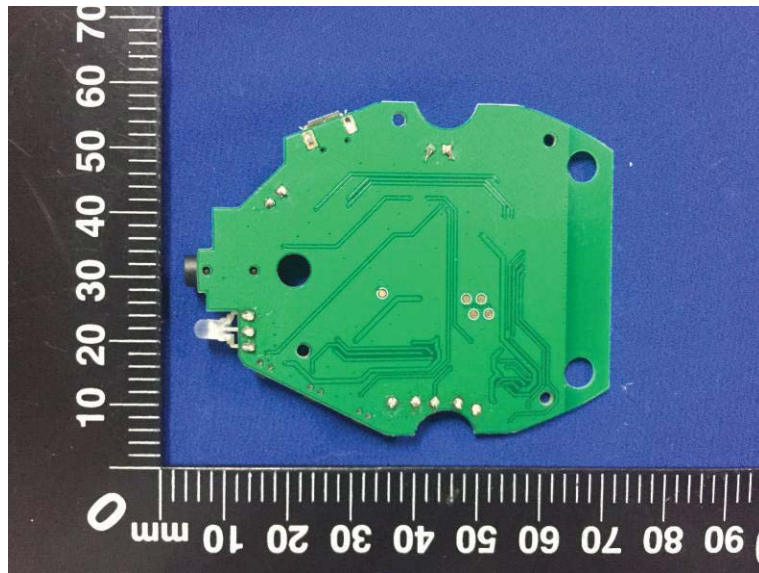


Internal Photos of EUT



BT Antenna





*****End of Report*****