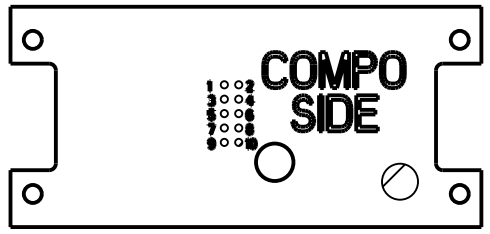
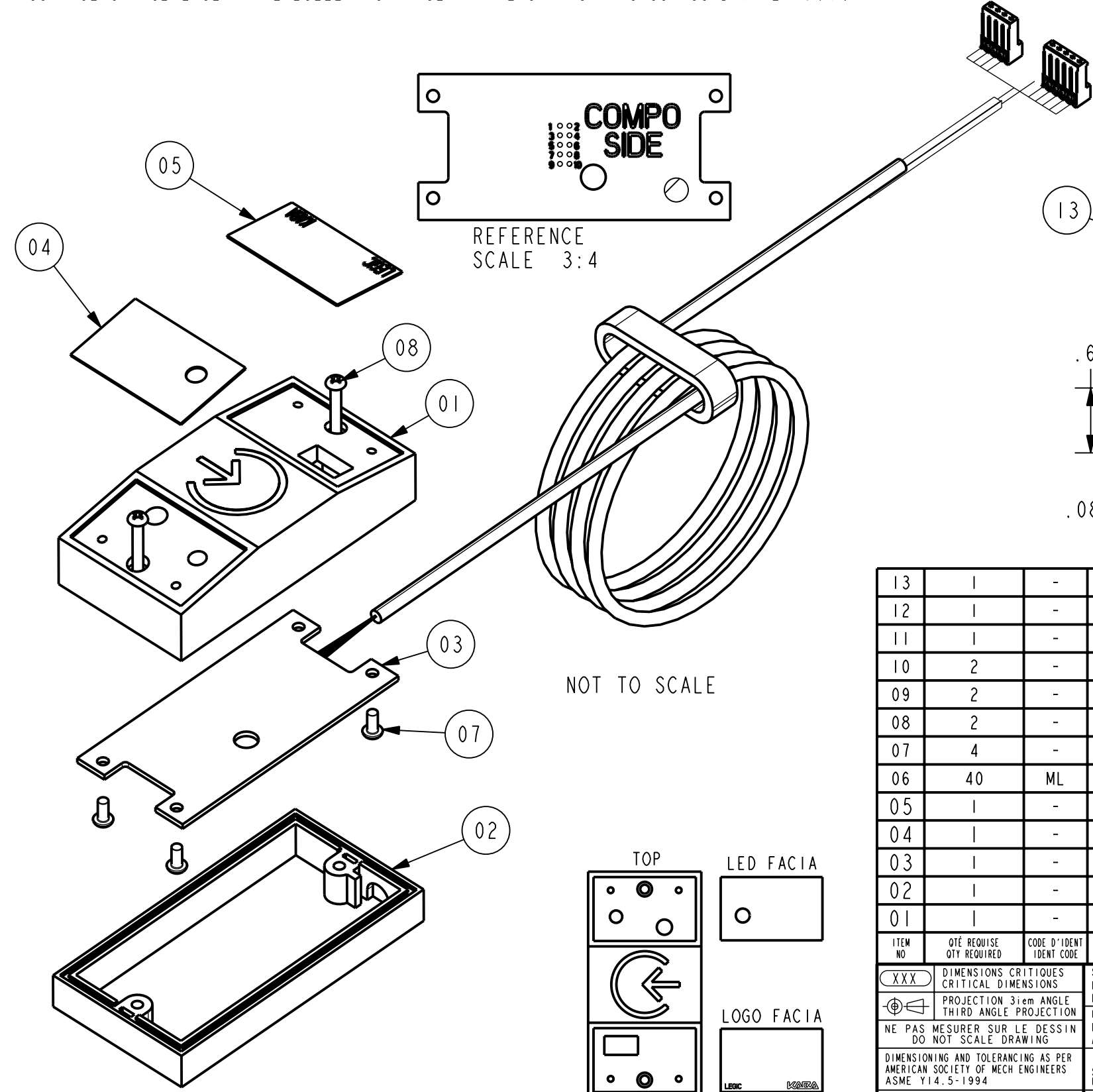


NOTES:
 1- HARDWARE BAG, #062-510757, CONSIST OF ITEMS #02, 04, 05, 08, 09, 10 AND 11.
 2- WHEN CABLE ASSY/PCB (ITEM 03) IS POSITIONNED ON PLASTIC HOUSING (ITEM 01) COVER ALL SURFACE OF PCB EXCEPT THE BUZZER TOP FACE WITH EPOXY POTTING COMPOUND (ITEM 06).

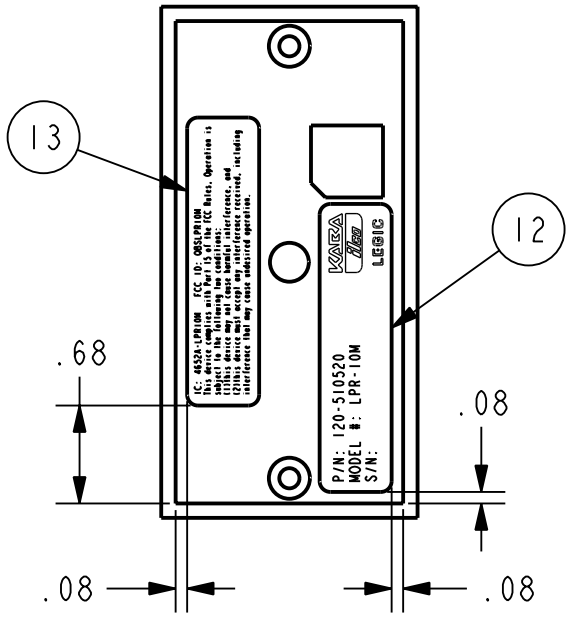
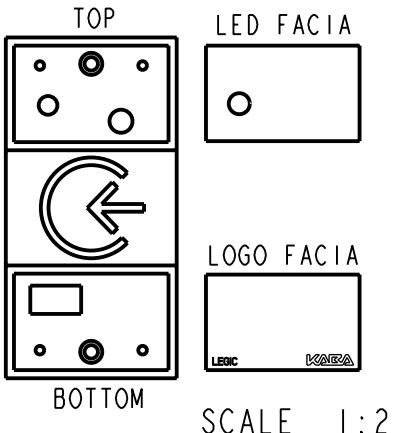
REVISIONS					
REV	ECN	DESCRIPTION	FAIT PAR MADE BY	VERIF PAR CHK'D BY	DATE
1	10558	ORIGINAL RELEASE	F. D.	A. P.	18FE 2003
2	10688	RELEASED FOR PILOT	F. D.	A. P.	29AL 2003
3	10701	ITEM #06 WAS EURETHANE GYFTHANE 505519	F. D.	A. P.	12MA 2003
4	10840	ITEM #13 ADDED, LABEL LOCATION VIEW ADDED;	P. P.	A. P.	29AU 2003



REFERENCE
SCALE 3:4



NOT TO SCALE



LABELS LOCATION AND POSITIONNING
DIMENSIONS ARE APPROX
SCALE 3:4

ITEM NO	QTY REQUIRED	CODE D'IDENT IDENT CODE	NUMERO DE PIÈCE OU D'IDENTIFICATION PART OR IDENTIFYING NUMBER	NOMENCLATURE / DESCRIPTION
13	1	-	038-510940	LABEL, CERTIFICATION
12	1	-	038-510844	LABEL, KIMPROX LEGIC READER
11	1	-	E1-PK6-18	POLYBAG 5X6, KANBAN (NOT SHOWN) SEE NOTE #1
10	2	-	999-510754	CONCRETE SCREW ANCHORS (NOT SHOWN)
09	2	-	999-510753	NYLON GRIP PLUGS, "DRY WALL" (NOT SHOWN)
08	2	-	890-510752	MOUNTING SCREW PAN HD PHILLIPS 4- 1 1/4
07	4	-	810-503561	DRIVE STEEL, PHILLIPS, 4-40UNC
06	40	ML	015-510858	EPOXY POTTING COMPOUND (NOT SHOWN) SEE NOTE #2
05	1	-	009-510655-4	FACIA 'LOGO'
04	1	-	009-510655-3	FACIA 'LED'
03	1	-	124-510520-001	CABLE ASSY / PCB
02	1	-	009-510655-2	FRAME "SPACER"
01	1	-	009-510655-1	PLASTIC HOUSING

DIMENSIONS CRITIQUES CRITICAL DIMENSIONS		SANS AUTRES SPECIFICATIONS, LES DIMENSIONS SONT EN POUÇES ET S'APPLIQUENT APRES FINITION.		DESSINE PAR: DRAWN BY: P. PRIEUR 06DE02		 7301, Decarie Boul Montreal, QC Canada H4P 2G7 www.kaba-ilco.com	
PROJECTION 31em ANGLE THIRD ANGLE PROJECTION		UNLESS OTHERWISE SPECIFIED, DIMENSIONS ARE IN INCHES AND APPLY AFTER FINISH.		CONCU PAR: DESIGNED BY: J. G. GINGRAS 06DE02			
NE PAS MESURER SUR LE DESSIN DO NOT SCALE DRAWING		TOLERANCES: SAUF SI SPECIFIEES AUTREMENT UNLESS OTHERWISE SPECIFIED		VERIFIE PAR: VERIFIED BY: - -			
DIMENSIONING AND TOLERANCING AS PER AMERICAN SOCIETY OF MECH ENGINEERS ASME Y14.5-1994		FRACTIONS ± 1/64 DECIMALES - DECIMALS .X ± .03 .XX ± .02 .XXX ± .010 .XXXX ± N/A		APPROUVE PAR: APPROVED BY: - -			
CE DOCUMENT EST LA PROPRIETE STRICTE DE KABA ILCO. LES DONNEES QU'IL CONTIENT NE PEUVENT ETRE COPIEES OU DIVULGUEES A UNE TIERCE PARTIE SANS LE CONSENTEMENT ECRIT DE KABA ILCO. CE DOCUMENT DEVRA ETRE RETOURNE SUR DEMANDE A KABA ILCO. THIS DOCUMENT IS PROPERTY OF KABA ILCO. THE DATA CONTAINED IS PROPRIETARY AND SHALL NOT BE COPIED OR DISCLOSED TO A THIRD PARTY WITHOUT WRITTEN CONSENT OF KABA ILCO. THIS DOCUMENT WILL BE BE RETURNED TO KABA ILCO UPON DEMAND.				MATERIAU / MATERIAL		NOT APPLICABLE FINITION / FINISH NOT APPLICABLE TRAITEMENT THERMIQUE / HEAT TREATMENT NOT APPLICABLE	
DIMENSIONS CRITIQUES CRITICAL DIMENSIONS PROJECTION 31em ANGLE THIRD ANGLE PROJECTION NE PAS MESURER SUR LE DESSIN DO NOT SCALE DRAWING DIMENSIONING AND TOLERANCING AS PER AMERICAN SOCIETY OF MECH ENGINEERS ASME Y14.5-1994 CE DOCUMENT EST LA PROPRIETE STRICTE DE KABA ILCO. LES DONNEES QU'IL CONTIENT NE PEUVENT ETRE COPIEES OU DIVULGUEES A UNE TIERCE PARTIE SANS LE CONSENTEMENT ECRIT DE KABA ILCO. CE DOCUMENT DEVRA ETRE RETOURNE SUR DEMANDE A KABA ILCO. THIS DOCUMENT IS PROPERTY OF KABA ILCO. THE DATA CONTAINED IS PROPRIETARY AND SHALL NOT BE COPIED OR DISCLOSED TO A THIRD PARTY WITHOUT WRITTEN CONSENT OF KABA ILCO. THIS DOCUMENT WILL BE BE RETURNED TO KABA ILCO UPON DEMAND.		ANGES ± 1° METRIQUE METRIC (±)		NOT APPLICABLE FINITION / FINISH NOT APPLICABLE TRAITEMENT THERMIQUE / HEAT TREATMENT NOT APPLICABLE		NO PIÈCE / PART NO: 120-510520 ECH SCALE SEE VIEWS NO DESSIN / DRAWING NO: AD-510520	