

APPENDIX**11. Photographs of Test Setup**

Fig.1 Photograph of the SAR measurement system

Photograph of the tissue simulant fluid liquid depth (Body)

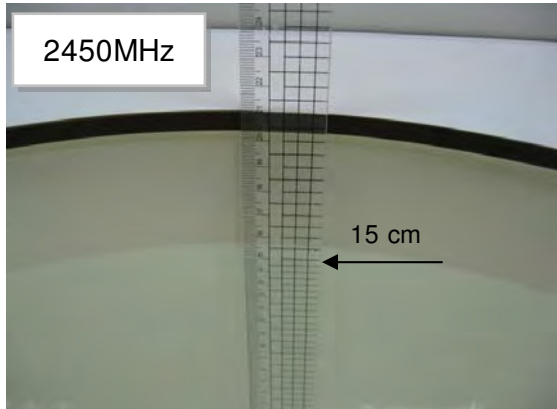


Fig.2.1

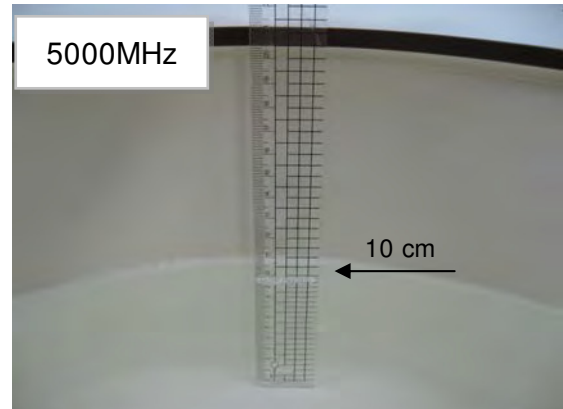


Fig.2.2

Body - distance between flat phantom and EUT is 5 mm

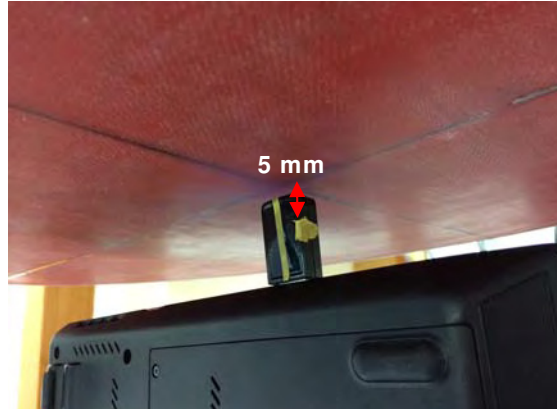


Fig.3 EUT Top side to flat phantom

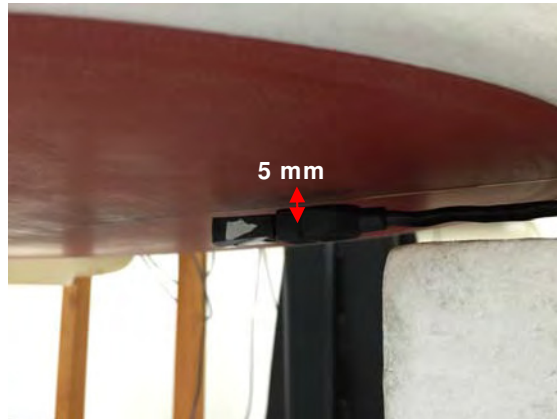


Fig.4 EUT Horizontal-down to flat phantom



Fig.5 EUT Horizontal-Up to flat phantom

Body - distance between flat phantom and EUT is 5 mm

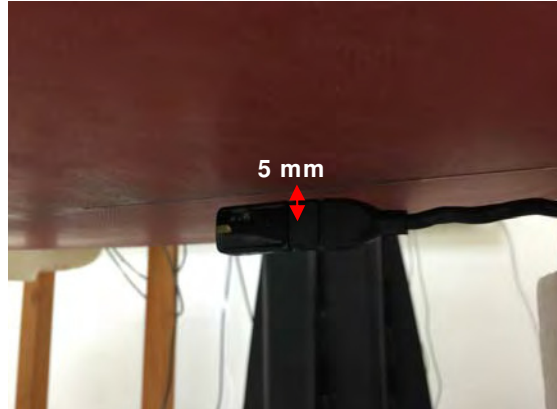


Fig.6 EUT Vertical-Back to flat phantom

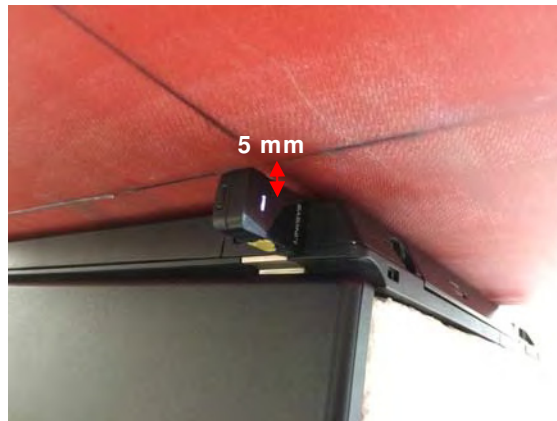


Fig.7 EUT Vertical-Front to flat phantom

12. Photographs of the EUT



Fig.8 Front view of EUT



Fig.9 Back view of EUT



Fig.10 USB cable

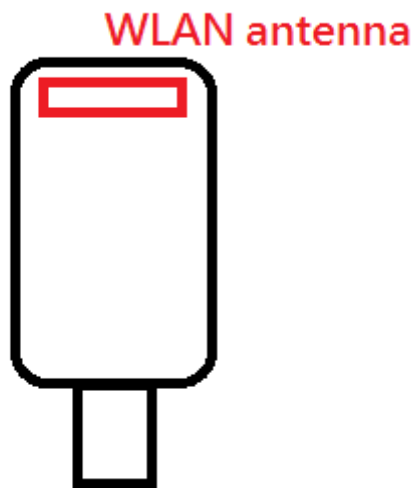


Fig.11 Antenna position of EUT (Front view)

- End of Report -