

USER GUIDE

RangePlus Wireless USB Adapter



About This Guide

Icon Descriptions

While reading through the User Guide you may see various icons that call attention to specific items. Below is a description of these icons:



NOTE: This check mark indicates that there is a note of interest and is something that you should pay special attention to while using the product.



WARNING: This exclamation point indicates that there is a caution or warning and it is something that could damage your property or product.



WEB: This globe icon indicates a noteworthy website address or e-mail address.

Online Resources

Website addresses in this document are listed without **http://** in front of the address because most current web browsers do not require it. If you use an older web browser, you may have to add **http://** in front of the web address.

Resource	Website
Linksys	www.linksys.com
Linksys International	www.linksys.com/international
Glossary	www.linksys.com/glossary
Network Security	www.linksys.com/security

Copyright and Trademarks



A Division of Cisco Systems, Inc.



Linksys is a registered trademark or trademark of Cisco Systems, Inc. and/or its affiliates in the U.S. and certain other countries. Copyright © 2007 Cisco Systems, Inc. All rights reserved. Other brands and product names are trademarks or registered trademarks of their respective holders.

Chapter 1: Product Overview	1
LED	1
Chapter 2: Wireless Security Checklist	2
General Network Security Guidelines	2
Additional Security Tips	2
Chapter 3: Advanced Configuration	3
How to Access the Wireless Network Monitor.	3
How to Use the Wireless Network Monitor.	3
Link Information	3
Connect	4
Profiles	6
How to Access the Diagnostics Utility.	13
How to Use the Diagnostics Utility.	14
Appendix A: Troubleshooting	15
Appendix B: Windows XP Wireless Zero Configuration	16
Windows XP Wireless Zero Configuration	16
Appendix C: Specifications	18
Appendix D: Warranty Information	19
Appendix E: Regulatory Information	20
FCC Statement	20
IMPORTANT NOTE:FCC Radiation Exposure Statement	20
Safety Notices.	20
Wireless Disclaimer	20
Avis de non-responsabilité concernant les appareils sans fil	20
User Information for Consumer Products Covered by EU Directive 2002/96/EC on Waste Electric and Electronic Equipment (WEEE)	21

Chapter 1:

Product Overview

Thank you for choosing the Linksys RangePlus Wireless USB Adapter. Using the latest wireless networking technology, the Adapter adds or upgrades wireless connectivity on your notebook computer. To help protect your data and privacy, you can use industrial-strength WPA2 encryption to protect your wireless connection. The included Setup Wizard will walk you through configuring the Adapter to your network's settings, step by step.

LED



Link (Green) The LED flashes when there is wireless network activity.

Chapter 2: Wireless Security Checklist

Wireless networks are convenient and easy to install, so homes with high-speed Internet access are adopting them at a rapid pace. Because wireless networking operates by sending information over radio waves, it can be more vulnerable to intruders than a traditional wired network. Like signals from your cellular or cordless phones, signals from your wireless network can also be intercepted. Since you cannot physically prevent someone from connecting to your wireless network, you need to take some additional steps to keep your network secure.

1. Change the default wireless network name or SSID

Wireless devices have a default wireless network name or Service Set Identifier (SSID) set by the factory. This is the name of your wireless network, and can be up to 32 characters in length. Linksys wireless products use **linksys** as the default wireless network name. You should change the wireless network name to something unique to distinguish your wireless network from other wireless networks that may exist around you, but do not use personal information (such as your Social Security number) because this information may be available for anyone to see when browsing for wireless networks.

2. Change the default password

For wireless products such as access points and routers, you will be asked for a password when you want to change their settings. These devices have a default password set by the factory. The Linksys default password is **admin**. Hackers know these defaults and may try to use them to access your wireless device and change your network settings. To thwart any unauthorized changes, customize the device's password so it will be hard to guess.

3. Enable MAC address filtering

Linksys routers give you the ability to enable Media Access Control (MAC) address filtering. The MAC address is a unique series of numbers and letters assigned to every networking device. With MAC address filtering enabled, wireless network access is provided solely for wireless devices with specific MAC addresses. For example, you can specify the MAC address of each computer in your home so that only those computers can access your wireless network.

4. Enable encryption

Encryption protects data transmitted over a wireless network. Wi-Fi Protected Access (WPA/WPA2) and Wired Equivalency Privacy (WEP) offer different levels of security for wireless communication.

A network encrypted with WPA/WPA2 is more secure than a network encrypted with WEP, because WPA/WPA2 uses dynamic key encryption. To protect the information as it passes over the airwaves, you should enable the highest level of encryption supported by your network equipment.

WEP is an older encryption standard and may be the only option available on some older devices that do not support WPA.

General Network Security Guidelines

Wireless network security is useless if the underlying network is not secure.

- Password protect all computers on the network and individually password protect sensitive files.
- Change passwords on a regular basis.
- Install anti-virus software and personal firewall software.
- Disable file sharing (peer-to-peer). Some applications may open file sharing without your consent and/or knowledge.

Additional Security Tips

- Keep wireless routers, access points, or gateways away from exterior walls and windows.
- Turn wireless routers, access points, or gateways off when they are not being used (at night, during vacations).
- Use strong passphrases that are at least eight characters in length. Combine letters and numbers to avoid using standard words that can be found in the dictionary.



WEB: For more information on wireless security, visit www.linksys.com/security

Chapter 3: Advanced Configuration

Advanced configuration is performed through the Wireless Network Monitor (the Monitor). Use it to check the link information, search for available wireless networks, or create profiles that hold different configuration settings.

Diagnostics is performed through the Diagnostic utility. Use it to detect the Adapter, test the driver and Monitor, and troubleshoot if needed.

How to Access the Wireless Network Monitor

After installing the Adapter, the Monitor icon appears in the system tray of your computer. If the Monitor is enabled, the icon is green. If the Monitor is disabled or the Adapter is not inserted, the icon is gray.



Wireless Network Monitor Icon

Double-click the icon to open the Monitor.

How to Use the Wireless Network Monitor

The opening screen of the Monitor is the *Link Information* screen. From this screen, you can find out how strong the current wireless signal is and how good the connection's quality is. Click **More Information** to view additional status information about the current connection. To search for available wireless networks, click the **Connect** tab. To perform configuration changes or create connection profiles, click the **Profiles** tab.

Link Information

The *Link Information* screen displays network mode, signal strength, and link quality information about the current connection. Click **More Information** for additional status information.



Link Information

Ad-Hoc Mode or Infrastructure Mode The screen indicates whether the Adapter is currently working in ad-hoc or infrastructure mode.

Signal Strength The Signal Strength bar indicates signal strength.

Link Quality The Link Quality bar indicates the quality of the wireless network connection.

Click **More Information** to view additional information about the wireless network connection on the *Wireless Network Status* screen.

Wireless Network Status

The *Wireless Network Status* screen provides information on your current network settings.



Wireless Network Status

Radio Band This is the radio band used on the network.

Wireless Network Name This is the unique name (SSID) of the wireless network.

Wireless Mode This is the mode of the wireless network currently in use.

Wide Channel This is the Wireless-N primary channel used with a 40 MHz radio band network.

Standard Channel This is the channel used by your wireless network.

Security This is the status of the wireless security feature.

Authentication This is your wireless network's authentication method.

Network Type This is the wireless network type.

IP Address This is the IP Address of the Adapter.

Subnet Mask This is the Adapter's Subnet Mask.

Default Gateway This is the Default Gateway address.

DNS1 This is the DNS address of the Adapter.

MAC Address This is the MAC address of the wireless network's wireless router or access point.

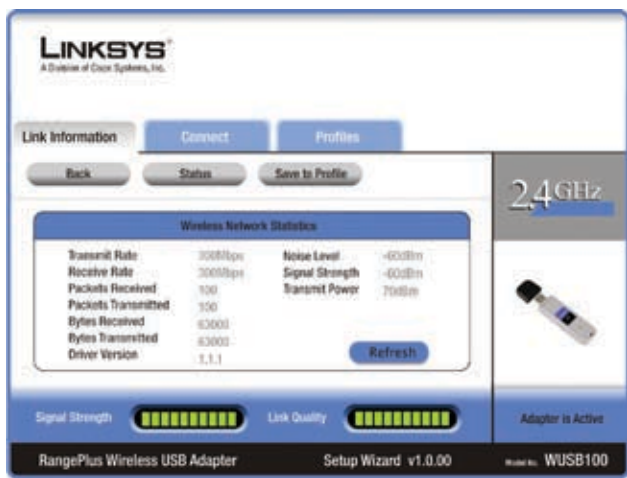
Signal Strength The Signal Strength bar indicates the signal strength.

Link Quality The Link Quality bar indicates the quality of the wireless network connection.

Click **Statistics** to go to the *Wireless Network Statistics* screen. Click **Back** to return to the initial *Link Information* screen. Click **Save to Profile** to save the currently active connection settings to a profile.

Wireless Network Statistics

The *Wireless Networks Statistics* screen provides statistics on your current network settings.



Wireless Network Statistics

Transmit Rate This is the data transmission rate of the current connection. (In Auto mode, the Adapter dynamically shifts to the fastest data transmission rate at any given time.)

Receive Rate This is the rate that the Adapter receives data.

RangePlus Wireless USB Adapter

Packets Received This shows the packets that the Adapter receives, in real time, after connecting to the wireless network or after clicking Refresh.

Packets Transmitted This shows the packets that the Adapter transmits, in real time, after connecting to the wireless network or after clicking Refresh.

Bytes Received This shows the bytes that the Adapter receives, in real time, after connecting to the wireless network or after clicking Refresh.

Bytes Transmitted This shows the bytes that the Adapter transmits, in real time, after connecting to the wireless network or after clicking Refresh.

Driver Version This shows the Adapter's driver version.

Noise Level This shows the level of background noise that affects the wireless signal. A lower reading translates into a higher quality signal.

Signal Strength This is the intensity of the wireless signal that the Adapter receives.

Transmit Power This is the power output at which the Adapter transmits.

Signal Strength The Signal Strength bar indicates the signal strength.

Link Quality The Link Quality bar indicates the quality of the wireless network connection.

Click **Back** to return to the initial *Link Information* screen. Click **Status** to go to the *Wireless Network Status* screen. Click **Save to Profile** to save the currently active connection settings to a profile. Click **Refresh** to reset the statistics.

Connect

The *Connect* screen displays a list of available networks in the table on the left. The table shows each network's wireless network name, radio band, channel, and the quality of the wireless signal the Adapter receives. You may click Network Name, CH (Channel), or Signal, to sort by that field.



Connect

Wireless Network Name This is the SSID or unique name of the wireless network.

CH This is the channel that the network uses.

Signal This is the percentage of signal strength, from 0 to 100%.

Site Information

For each network selected, the following settings are listed:

Wireless Mode This is the mode of the wireless network currently in use.

Network Type This is the network type used by your wireless network.

Radio Band This is the radio band used by your wireless network.

Security This is the status of the wireless security feature.

MAC Address This is the MAC address of the wireless network's wireless router or access point.

Refresh Click **Refresh** to perform a new search for wireless devices.

Connect To connect to one of the networks on the list, select the wireless network, and click **Connect**. If the network's wireless security is enabled, then you will view this screen:



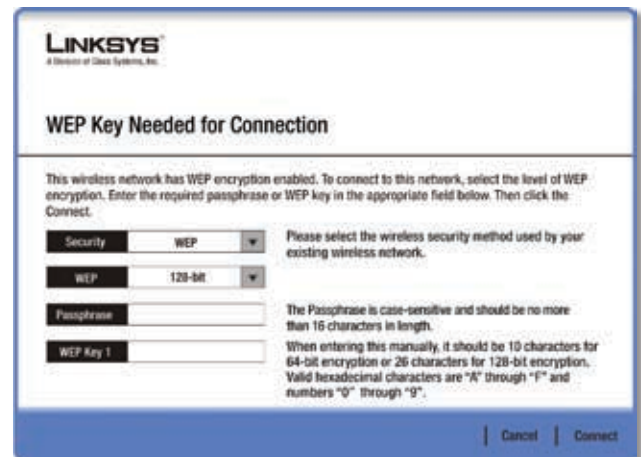
Click Continue

Make sure you have the security settings of your wireless network, and then click **Continue**.

Proceed to the instructions for the wireless security screen you see:

WEP (Wired Equivalent Privacy)

If the network has WEP encryption enabled, then you see the *WEP Key Needed for Connection* screen.



WEP Security

WEP Select **64-bit** or **128-bit** encryption.

Passphrase Enter the network's Passphrase, so a WEP key is automatically generated. The passphrase is case-sensitive and must be 16 or fewer alphanumeric characters. It must match the passphrase of your other wireless network devices and is compatible with Linksys wireless products only. (For non-Linksys wireless products, enter the WEP key manually.)

WEP Key 1 If you do not have the Passphrase, enter the WEP key, which must match the WEP key of your wireless network. For 64-bit encryption, enter exactly 10 hexadecimal characters ("0" to "9" and "A" to "F".) For 128-bit encryption, enter exactly 26 hexadecimal characters.

To connect to the network, click **Connect**. To cancel the connection, click **Cancel**.

WPA (Wi-Fi Protected Access)

If the network has WPA Personal security enabled, then you see the *WPA Personal Needed for Connection* screen.

LINKSYS
A Division of Cisco Systems, Inc.

WPA-Personal Key Needed for Connection

This wireless network has WPA-Personal, also known as Pre-Shared Key, enabled. To connect to this network, select the encryption type. Enter the required Pre-Shared Key in the appropriate field below. Then click the Connect.

Security: **WPA-Personal** Please select the wireless security method used by your existing wireless network.

Encryption: **TKIP** Please select an encryption type used to protect your wireless data transmissions.

Pre-shared Key: Please enter a Pre-shared Key that is 8 to 63 characters in length.

Cancel | Connect

WPA-Personal Security

Encryption Select the type of algorithm you want to use, **TKIP** or **AES**.

Pre-shared Key Enter the network's Pre-shared Key of 8-63 characters.

To connect to the network, click **Connect**. To cancel the connection, click **Cancel**.

WPA2 (Wi-Fi Protected Access 2)

If the network has WPA2 Personal security enabled, then you see the *WPA2 Personal Needed for Connection* screen.

LINKSYS
A Division of Cisco Systems, Inc.

WPA2-Personal Key Needed for Connection

This wireless network has WPA2-Personal enabled. To connect to this network, enter the required Pre-Shared Key in the appropriate field below. Then click the Connect button.

Security: **WPA2-Personal** Please select the wireless security method used by your existing wireless network.

Pre-shared Key: Please enter a Pre-shared Key that is 8 to 63 characters in length.

Cancel | Connect

WPA2-Personal Security

Pre-shared Key Enter the network's Pre-shared Key of 8-63 characters.

To connect to the network, click **Connect**. To cancel the connection, click **Cancel**.

Profiles

The *Profiles* screen lets you save different configuration profiles for different network setups. The table on the left displays a list of available profiles with their profile names and wireless network names.

LINKSYS
A Division of Cisco Systems, Inc.

Link Information | Connect | Profiles

To connect to a network, select the profile name then click the Connect button. To create or edit a profile, use the menu bar at the bottom of the screen.

Profile	Wireless Network Name
Default	linksys

Site Information

Wireless Mode: Infrastructure
Wide Channel: Auto
Standard Channel: Auto
Security: WPA2-Personal
Authentication: AES

Connect

New | Edit | Import | Export | Delete

Adaptor is Active

RangePlus Wireless USB Adapter Setup Wizard v1.0.00 Model No. WUSB100

Profiles

Profile This is the name of the profile.

Wireless Network Name This is the SSID or unique name of the wireless network.

Profile Information

For each profile selected, the following are listed:

Wireless Network This is the type of wireless network currently in use.

Wireless Mode This is the mode of the wireless network currently in use.

Wide Channel This is the Wireless-N primary channel used with a 40 MHz radio band network.

Standard Channel This is the channel used by your wireless network.

Security This is the status of the wireless security.

Authentication This is the authentication setting for the network.

Connect To connect to a wireless network using a specific profile, select the profile, and click **Connect**.

New Click **New** to create a new profile. See the next section, "Create a New Profile," for instructions.

Edit Select the profile you want to change and click **Edit**.

Import Click **Import** to import a profile that is saved in another location. Select the appropriate file, and click **Open**.

Export Select the profile you want to save in a different location, and click **Export**. Direct Windows to the appropriate folder, and click **Save**.

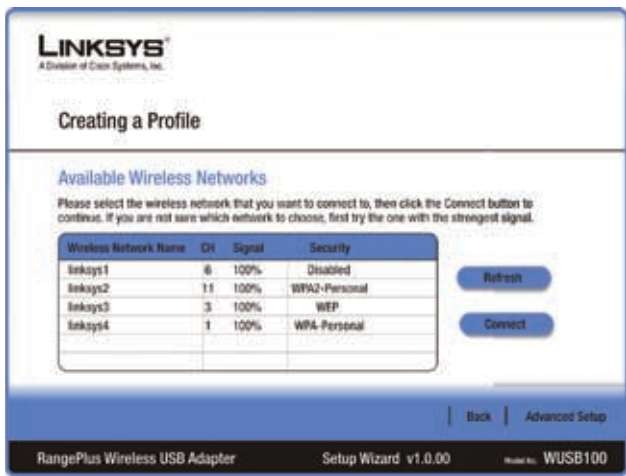
Delete Select the profile you want to delete and click **Delete**.



NOTE: If you want to export more than one profile, you must export them one at a time.

Create a New Profile

The next screen is the *Available Wireless Networks* screen.



Available Wireless Networks

This screen provides two options for setting up the Adapter.

Available Wireless Networks (For most users) Use this option if you already have a network set up. The networks available to this Adapter are listed on this screen. You can choose one of these networks and click **Connect** to connect to it. Click **Refresh** to update the Available Wireless Networks list.

Advanced Setup If your network is not listed on this screen, select **Advanced Setup** to set up the Adapter manually. This method of setting up the Adapter is intended for advanced users only.

The setup for each option is described, step by step, under the appropriate heading on the following pages.

Available Wireless Networks

The available networks are listed in the table on the center of the screen by Wireless Network Name. Select the wireless network you wish to connect to and click **Connect**. (If you do not see your network listed, click **Refresh** to bring the list up again.) If the network uses wireless security, you will need to configure security on the Adapter. If not, you will be taken directly to the *Congratulations* screen.

1. If you have wireless security enabled on your network, continue to step 2. If you do not have wireless security enabled, continue to step 3.
2. If the network's wireless security is enabled, then you will view this screen:



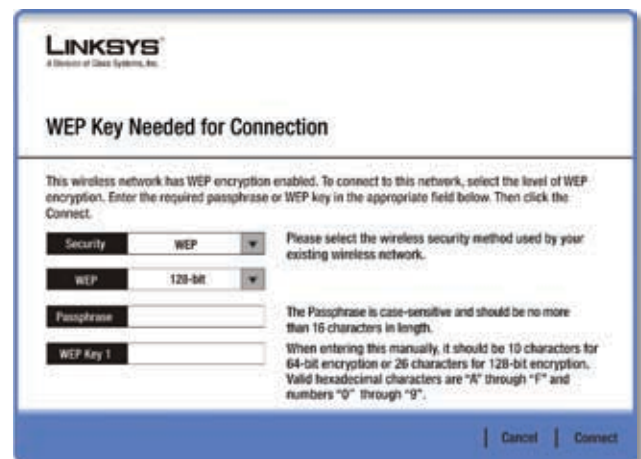
Click Continue

Make sure you have the security settings of your wireless network, and then click **Continue**.

Proceed to the instructions for the wireless security screen you see:

WEP

If the network has WEP encryption enabled, then you see the *WEP Key Needed for Connection* screen.



WEP Security

WEP Select **64-bit** or **128-bit** encryption.

Passphrase Enter the network's Passphrase, so a WEP key is automatically generated. The passphrase is case-sensitive and must be 16 or fewer alphanumeric characters. It must match the passphrase of your other wireless network devices and is compatible with Linksys wireless products only. (For non-Linksys wireless products, enter the WEP key manually.)

WEP Key If you do not have the Passphrase, enter the WEP key, which must match the WEP key of your wireless network. For 64-bit encryption, enter exactly 10 hexadecimal characters (“0” to “9” and “A” to “F”). For 128-bit encryption, enter exactly 26 hexadecimal characters.

Click **Connect** and proceed to step 3.

WPA Personal

If the network has WPA Personal security enabled, then you see the *WPA Personal Needed for Connection* screen.



WPA-Personal Security

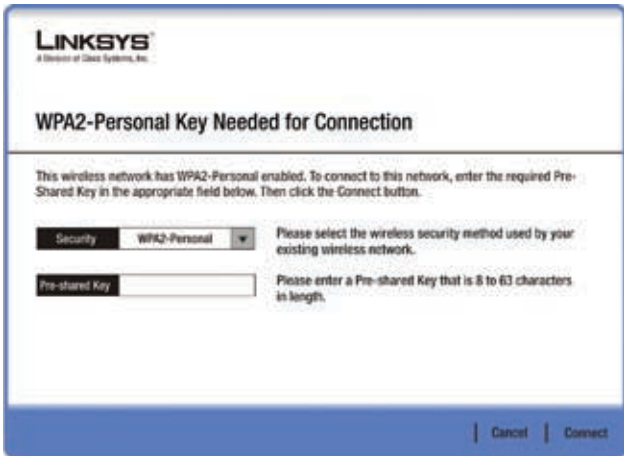
Encryption Select the type of algorithm you want to use, **TKIP** or **AES**.

Pre-shared Key Enter the network’s Pre-shared Key of 8-63 characters.

Click **Connect** and proceed to step 3.

WPA2 Personal

If the network has WPA2 Personal security enabled, then you see the *WPA2 Personal Needed for Connection* screen.



WPA2-Personal Security

Pre-shared Key Enter the network’s Pre-shared Key of 8-63 characters.

Click **Connect** and proceed to step 3.

3. After the profile installs, the *Congratulations* screen appears. Click **Finish**.

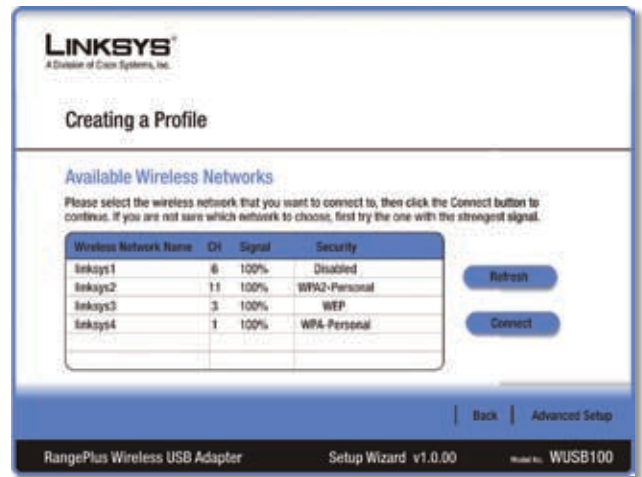


Congratulations

Congratulations! The profile is successfully configured.

Advanced Setup

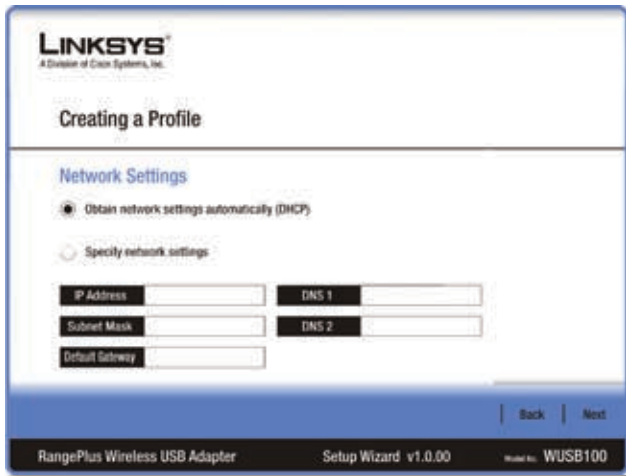
If your network is not listed with the available networks, use Advanced Setup.



Available Wireless Networks

1. Click **Advanced Setup** on the *Available Wireless Networks* screen to set up the Adapter manually.

2. The *Network Settings* screen appears.



Wireless Network

If your network has a router or other DHCP server, select **Obtain network settings automatically (DHCP)**.

If your network does not have a DHCP server or router, select **Specify network settings**. Enter an IP Address, Subnet Mask, Default Gateway, and DNS addresses appropriate for your network. You must specify the IP Address and Subnet Mask on this screen. If you are unsure about the Default Gateway and DNS addresses, leave these fields blank.

- **IP Address** This IP Address must be unique to your network.
- **Subnet Mask** The Adapter's Subnet Mask must be the same as your wired network's Subnet Mask.
- **Default Gateway** Enter the IP address of your network's Gateway.
- **DNS 1 and DNS 2** Enter the DNS address of your wired Ethernet network.

Click **Next** to continue, or click **Back** to return to the previous screen.

3. The *Wireless Mode* screen shows a choice of two wireless modes.

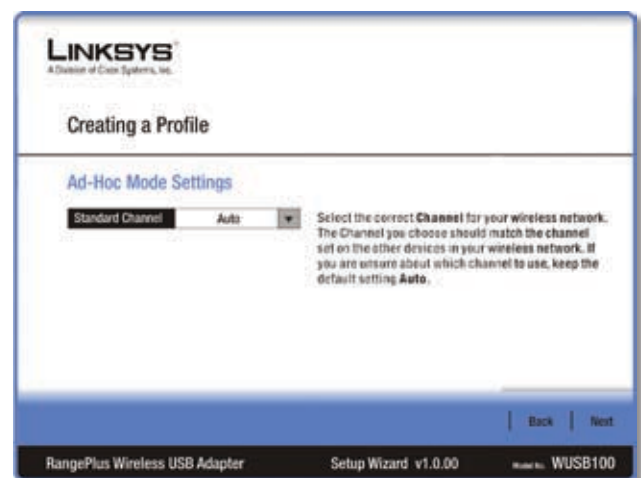


Wireless Mode

- **Infrastructure Mode** Select this mode if you want to connect to a wireless router or access point.
- **Ad-Hoc Mode** Select this mode if you want to connect to another wireless device directly without using a wireless router or access point.
- **Wireless Network Name** Enter a wireless network name (SSID) that must be used for all devices in your wireless network. It is case-sensitive and should be a unique name to help prevent others from entering your network.

Click **Next** to continue, or click **Back** to return to the previous screen.

4. If you chose Infrastructure Mode, go to step 5 now. If you chose Ad-Hoc Mode, the *Ad-Hoc Mode Settings* screen appears.



Ad-Hoc Mode Settings

- **Standard Channel** Select the correct channel for your wireless network. If you are unsure about which channel to use, keep the default, **Auto**.

Click **Next** to continue, or click **Back** to return to the previous screen.

5. If your wireless network does not have wireless security, select **Disabled** and then click **Next** to continue. Proceed to step 6.



Wireless Security

If your wireless network has wireless security, select the method of security used: WEP, WPA Personal, WPA2 Personal, WPA Enterprise, WPA2 Enterprise, or RADIUS. WEP stands for Wired Equivalent Privacy, and WPA stands for Wi-Fi Protected Access. WPA2 stands for Wi-Fi Protected Access 2. WPA is a stronger security method than WEP. WPA2 is a stronger security method than WPA. RADIUS stands for Remote Authentication Dial-In User Service. Click **Next** to continue, or click **Back** to return to the previous screen.

Proceed to the section for your security method.

WEP

Make sure the settings you configure match the settings of your wireless network.



WEP

WEP Select **64-bit** or **128-bit** encryption.

Passphrase Enter the network's Passphrase, so a WEP key is automatically generated. It is case-sensitive and should not be longer than 16 alphanumeric characters. This passphrase must match the passphrase of your other wireless network devices and is compatible with Linksys wireless products only. (If you have any non-Linksys wireless products, enter the WEP key manually on those products.)

WEP Key If you do not have the Passphrase, enter the WEP key of your wireless network. For 64-bit encryption, enter exactly 10 hexadecimal characters. For 128-bit encryption, enter exactly 26 hexadecimal characters. Valid hexadecimal characters are "0" to "9" and "A" to "F".

Advanced Users

TX Key The default is **1**. If your network's wireless router or access point uses transmit key number 2, 3, or 4, select the appropriate number.

Authentication The default is **Open System**. For Open System authentication, the sender and the recipient do not share a WEP key for authentication. For Shared Key authentication, both the sender and the recipient share a WEP key for authentication.

Click **Next** to continue, or click **Back** to return to the previous screen.

WPA Personal

WPA Personal offers two encryption methods, TKIP and AES, with dynamic encryption keys.



WPA Personal

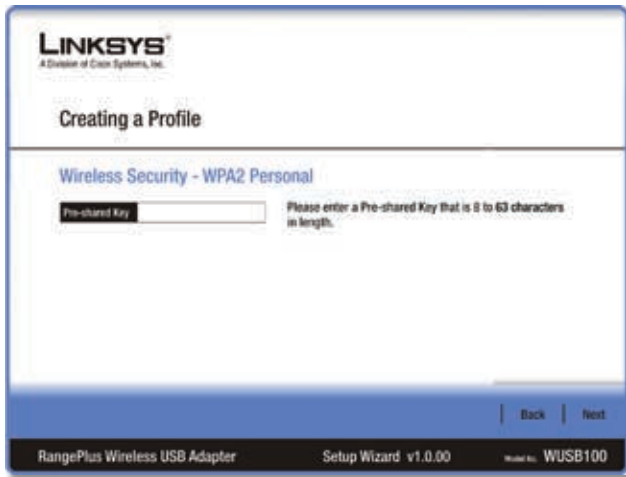
Encryption Select **TKIP** or **AES**.

Pre-shared Key Enter the network's Pre-shared Key of 8-63 characters.

Click **Next** to continue, or click **Back** to return to the previous screen.

WPA2 Personal

WPA2 Personal uses the encryption method, AES, with dynamic encryption keys.



WPA2 Personal

Pre-shared Key Enter the network's Pre-shared Key of 8-63 characters.

Click **Next** to continue, or click **Back** to return to the previous screen.

WPA Enterprise

WPA Enterprise features WPA security used in coordination with a RADIUS server. (This should only be used when a RADIUS server is connected to the Router.) WPA Enterprise offers two authentication methods, EAP-TLS and PEAP, as well as two encryption methods, TKIP and AES, with dynamic encryption keys.

Authentication Select the authentication method your network is using, **EAP-TLS** or **PEAP**.

EAP-TLS



WPA Enterprise - EAP-TLS

If you selected EAP-TLS, configure the following:

Login Name Enter the login name of your wireless network.

Server Name Enter the name of the authentication server (this is optional).

Certificate Select the certificate you installed to authenticate you on your wireless network.

Encryption Select the type of encryption, **TKIP** or **AES**.

Click **Next** to continue, or click **Back** to return to the previous screen.

PEAP



WPA Enterprise - PEAP

If you selected PEAP, configure the following:

Login Name Enter the login name of your wireless network.

Password Enter the password of your wireless network.

Server Name Enter the name of the authentication server (this is optional).

Certificate Select the certificate you installed to authenticate you on your wireless network. If you want to use any certificate, keep the default, **Trust Any**.

Inner Authen. Select the authentication method used inside the PEAP tunnel.

Encryption Select the type of encryption, **TKIP** or **AES**.

Click **Next** to continue, or click **Back** to return to the previous screen.

WPA2 Enterprise

WPA2 Enterprise features WPA2 security used in coordination with a RADIUS server. (This should only be used when a RADIUS server is connected to the Router.) WPA2 Enterprise offers two authentication methods, EAP-TLS and PEAP.

Authentication Select the authentication method your network is using, **EAP-TLS** or **PEAP**.

EAP-TLS

WPA2 Enterprise - EAP-TLS

If you selected EAP-TLS, configure the following:

Login Name Enter the login name of your wireless network.

Server Name Enter the name of the authentication server (this is optional).

Certificate Select the certificate you installed to authenticate you on your wireless network.

Click **Next** to continue, or click **Back** to return to the previous screen.

PEAP

WPA2 Enterprise - PEAP

If you selected PEAP, configure the following:

Login Name Enter the login name of your wireless network.

Password Enter the password of your wireless network.

RangePlus Wireless USB Adapter

Server Name Enter the name of the authentication server (this is optional).

Certificate Select the certificate you installed to authenticate you on your wireless network. If you want to use any certificate, keep the default, **Trust Any**.

Inner Authn. Select the authentication method used inside the PEAP tunnel.

Click **Next** to continue, or click **Back** to return to the previous screen.

RADIUS

RADIUS features use of a RADIUS server. (This should only be used when a RADIUS server is connected to the Router.) RADIUS offers two authentication types: EAP-TLS and PEAP.

Authentication Select the authentication method your network is using, **EAP-TLS** or **PEAP**.

EAP-TLS

RADIUS - EAP-TLS

If you selected EAP-TLS, configure the following:

Login Name Enter the login name of your wireless network.

Server Name Enter the name of the authentication server (this is optional).

Certificate Select the certificate you installed to authenticate you on your wireless network.

Click **Next** to continue, or click **Back** to return to the previous screen.

PEAP



RADIUS - PEAP

If you selected PEAP, configure the following:

Login Name Enter the login name of your wireless network.

Password Enter the password of your wireless network.

Server Name Enter the name of the authentication server (this is optional).

Certificate Select the certificate you installed to authenticate you on your wireless network. If you want to use any certificate, keep the default, **Trust Any**.

Inner Authn. Select the authentication method used inside the PEAP tunnel.

Click **Next** to continue, or click **Back** to return to the previous screen.

6. The *Confirm New Settings* screen appears.



Confirm New Settings

To save the new settings, click **Save**. To edit the new settings, click **Back**. To exit Advanced Setup through the Monitor, click **Exit**.

7. The *Congratulations* screen appears. Click **Connect to Network** to implement the new settings immediately and return to the *Link Information* screen. Click **Return to Profiles** screen to keep the current settings active and return to the *Profiles* screen.



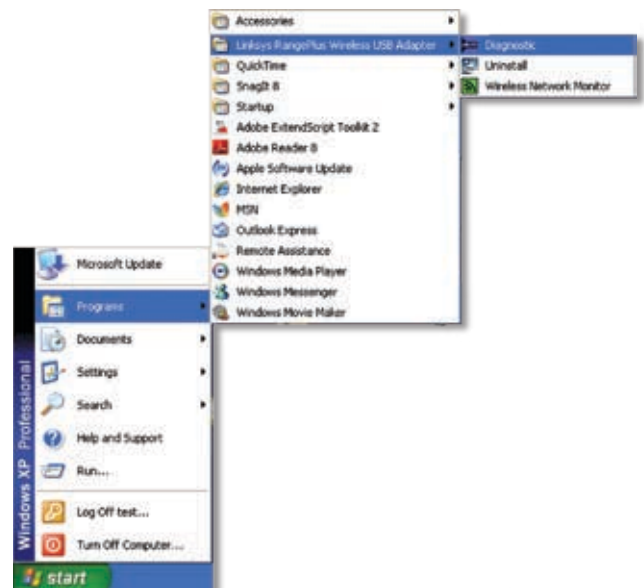
Congratulations

Congratulations! The profile is successfully configured.

How to Access the Diagnostics Utility

After installing the Adapter, the Diagnostic utility is installed on your computer. Follow these instructions to run the Diagnostics utility:

1. Click **Start**.
2. Select **Programs**.
3. Select **Linksys RangePlus Wireless USB Adapter**.
4. Click **Diagnostic**.

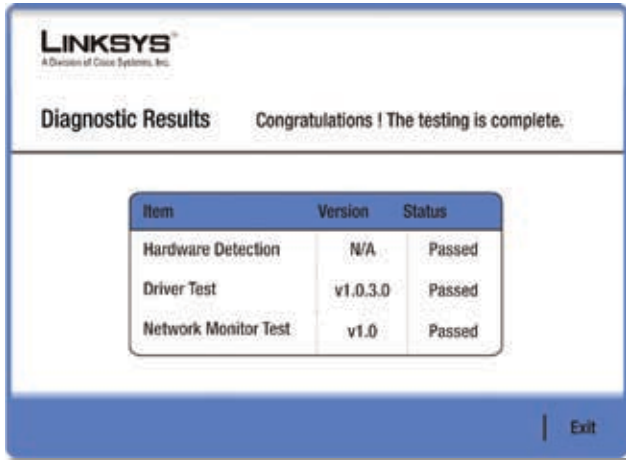


Run Diagnostics Utility

To uninstall the Diagnostics utility, click **Uninstall**. To open the Monitor, click **Wireless Network Monitor**.

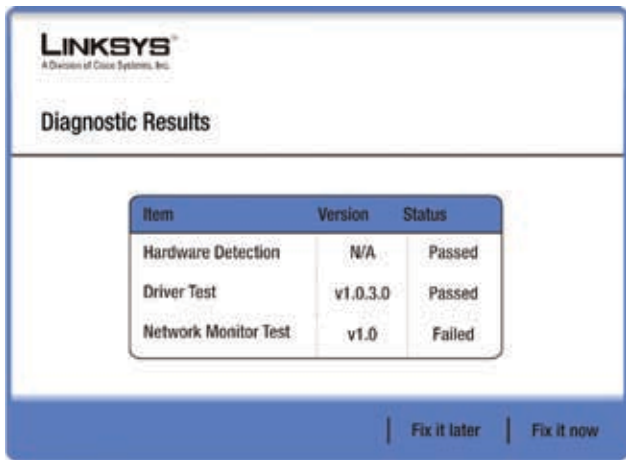
How to Use the Diagnostics Utility

After you run the Diagnostics utility, the results are displayed.



Diagnostic Results - Passed

If the Adapter has passed all tests, then click **Exit** to close the Diagnostics utility.



Diagnostic Results - Troubleshooting

If the Adapter fails a test, you have two choices. To troubleshoot at a later time, click **Fix it later**. To troubleshoot now, click **Fix it now**.

Appendix A: Troubleshooting

Your computer does not recognize the Adapter.

Make sure that the Adapter is properly inserted into the USB slot.

The Adapter does not work properly.

Remove the Adapter, and then reinsert it into the computer's USB slot.

Your computer cannot communicate with the other computers linked via Ethernet in the Infrastructure configuration.

1. Make sure that the computers are powered on.
2. Make sure that the Adapter is configured with the same Wireless Network Name (SSID) and wireless security settings as the other wireless computers in the Infrastructure configuration.



WEB: If your questions are not addressed here, refer to the Linksys website, www.linksys.com

Appendix B: Windows XP Wireless Zero Configuration

Windows XP Wireless Zero Configuration

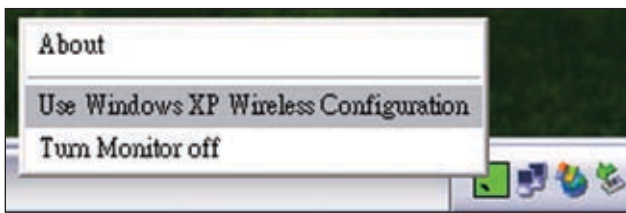
If your computer is running Windows XP, then this choice will be available. If you want to use Windows XP Wireless Zero Configuration to control the Adapter, instead of using the Wireless Network Monitor, then right-click the Wireless Network Monitor icon, and select **Use Windows XP Wireless Configuration**.



NOTE: If you have WPA2 wireless security, refer to Update for Windows XP (KB893357) on the microsoft.com website to be able to connect correctly.

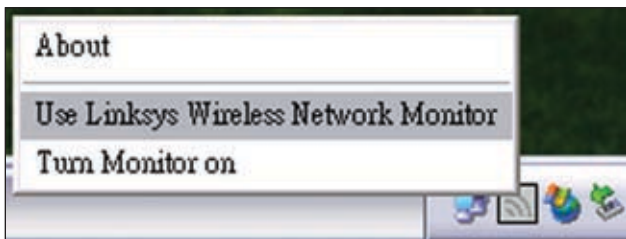


Wireless Network Monitor Icon



Use Windows XP Wireless Configuration

If you want to switch back to the Wireless Network Monitor, right-click the Wireless Network Monitor icon, and select **Use Linksys Wireless Network Monitor**.

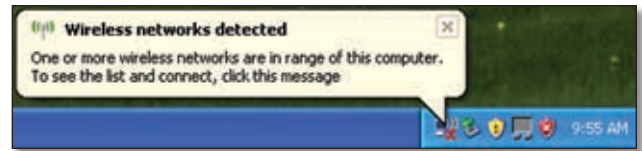


Use Linksys Wireless Network Monitor



NOTE: For more information on Windows XP Wireless Zero Configuration, refer to Windows Help.

1. After installing the Adapter, the Windows XP Wireless Zero Configuration icon appears in your computer's system tray. Double-click the icon.



Windows XP Wireless Zero Configuration Icon

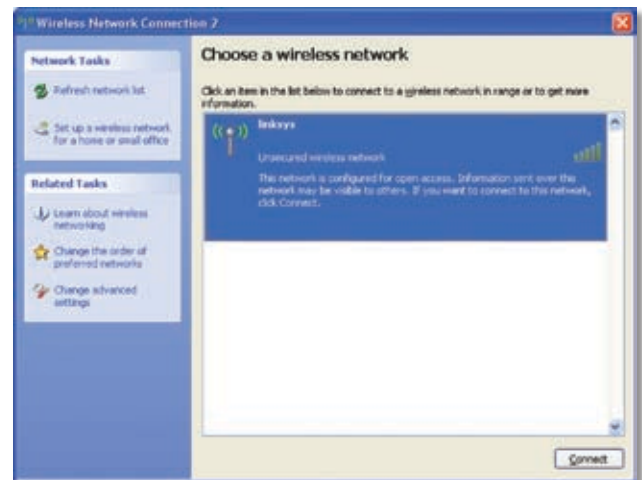
2. The screen that appears will show any available wireless network. Select the network you want. Click **Connect**.

If your network does not have wireless security enabled, go to step 3.

If your network does have wireless security enabled, go to step 4.



NOTE: Steps 2 and 3 are for Windows XP with Service Pack 2 installed.



Available Wireless Network

3. If your network does not have wireless security enabled, click **Connect Anyway** to connect the Adapter to your network.



No Wireless Security

4. If your network uses WEP wireless security, enter the WEP Key in the *Network Key* and *Confirm network key* fields. If your network uses WPA Personal wireless security, enter the Passphrase in the *Network Key* and *Confirm network key* fields. Click **Connect**.

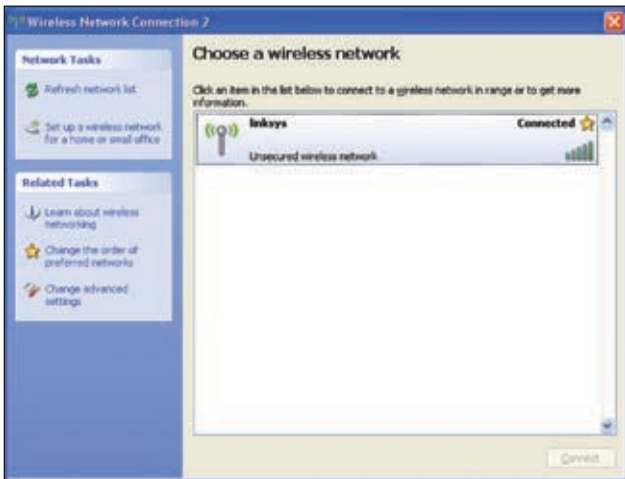


Wireless Security



NOTE: Windows XP Wireless Zero Configuration does not support the use of a passphrase. Enter the exact WEP key used by your wireless router or access point.

5. Your wireless network will appear as Connected when your connection is active.



Wireless Network Connection

For more information about wireless networking on a Windows XP computer, click **Start > Help > Support**. Enter the keyword **wireless** in the field provided, and press the **Enter** key.

Your computer is now connected to your wireless network.

Appendix C: Specifications

Model	WUSB100
Standards	IEEE 802.11b, IEEE 802.11g
LEDs	1
Number of Antennas	2 Internal Antennas
Connector Type	USB
Modulations	802.11b: CCK, QPSK, BPSK 802.11g: 64-QAM, 16-QAM 802.11n draft: BPSK, QPSK, 16-QAM, 64-QAM
RF Power (EIRP) in dBm	802.11b: 17.6 dBm 802.11g: 17.2 dBm 802.11n: 17.1 dBm
Antenna Gain in dBi	2 dBi
Power Consumption	TX: 590mA, HT20, MCS7; 610mA, HT40, MCS7 at 3.3V RX: 480mA, HT20, MCS15; 570mA HT40, MCS15 at 3.3V
Security Features	WEP, Wi-Fi Protected Access™ 2 (WPA2)
Security Key Bits	Up to 256-Bit Encryption
Environmental	
Dimensions	3.86" x 0.39" x 1.10" (98 x 10 x 28 mm)
Weight	0.60 oz (17 g)
Power	3.3V
Certification	FCC, UL, CB, CE, C-Tick, IDA
Operating Temp.	32 to 104°F (0 to 40°C)
Storage Temp.	14 to 158°F (-10 to 70°C)
Operating Humidity	10 to 85% Noncondensing
Storage Humidity	5 to 90% Noncondensing

Specifications are subject to change without notice.

Appendix D: Warranty Information

Limited Warranty

Linksys warrants to You that, for a period of one year (the "Warranty Period"), your Linksys Product will be substantially free of defects in materials and workmanship under normal use. Your exclusive remedy and Linksys' entire liability under this warranty will be for Linksys at its option to repair or replace the Product or refund Your purchase price less any rebates. This limited warranty extends only to the original purchaser.

If the Product proves defective during the Warranty Period call Linksys Technical Support in order to obtain a Return Authorization Number, if applicable. BE SURE TO HAVE YOUR PROOF OF PURCHASE ON HAND WHEN CALLING. If You are requested to return the Product, mark the Return Authorization Number clearly on the outside of the package and include a copy of your original proof of purchase. RETURN REQUESTS CANNOT BE PROCESSED WITHOUT PROOF OF PURCHASE. You are responsible for shipping defective Products to Linksys. Linksys pays for UPS Ground shipping from Linksys back to You only. Customers located outside of the United States of America and Canada are responsible for all shipping and handling charges.

ALL IMPLIED WARRANTIES AND CONDITIONS OF MERCHANTABILITY OR FITNESS FOR A PARTICULAR PURPOSE ARE LIMITED TO THE DURATION OF THE WARRANTY PERIOD. ALL OTHER EXPRESS OR IMPLIED CONDITIONS, REPRESENTATIONS AND WARRANTIES, INCLUDING ANY IMPLIED WARRANTY OF NON-INFRINGEMENT, ARE DISCLAIMED. Some jurisdictions do not allow limitations on how long an implied warranty lasts, so the above limitation may not apply to You. This warranty gives You specific legal rights, and You may also have other rights which vary by jurisdiction.

This warranty does not apply if the Product (a) has been altered, except by Linksys, (b) has not been installed, operated, repaired, or maintained in accordance with instructions supplied by Linksys, or (c) has been subjected to abnormal physical or electrical stress, misuse, negligence, or accident. In addition, due to the continual development of new techniques for intruding upon and attacking networks, Linksys does not warrant that the Product will be free of vulnerability to intrusion or attack.

TO THE EXTENT NOT PROHIBITED BY LAW, IN NO EVENT WILL LINKSYS BE LIABLE FOR ANY LOST DATA, REVENUE OR PROFIT, OR FOR SPECIAL, INDIRECT, CONSEQUENTIAL, INCIDENTAL OR PUNITIVE DAMAGES, REGARDLESS OF THE THEORY OF LIABILITY (INCLUDING NEGLIGENCE), ARISING OUT OF OR RELATED TO THE USE OF OR INABILITY TO USE THE PRODUCT (INCLUDING ANY SOFTWARE), EVEN IF LINKSYS HAS BEEN ADVISED OF THE POSSIBILITY OF SUCH DAMAGES. IN NO EVENT WILL LINKSYS' LIABILITY EXCEED THE AMOUNT PAID BY YOU FOR THE PRODUCT. The foregoing limitations will apply even if any warranty or remedy provided under this Agreement fails of its essential purpose. Some jurisdictions do not allow the exclusion or limitation of incidental or consequential damages, so the above limitation or exclusion may not apply to You.

Please direct all inquiries to: Linksys, P.O. Box 18558, Irvine, CA 92623.

Appendix E: Regulatory Information

FCC Statement

This device complies with Part 15 of the FCC Rules. Operation is subject to the following two conditions: (1) This device may not cause harmful interference, and (2) this device must accept any interference received, including interference that may cause undesired operation.

This product has been tested and complies with the specifications for a Class B digital device, pursuant to Part 15 of the FCC Rules. These limits are designed to provide reasonable protection against harmful interference in a residential installation. This equipment generates, uses, and can radiate radio frequency energy and, if not installed and used according to the instructions, may cause harmful interference to radio communications. However, there is no guarantee that interference will not occur in a particular installation. If this equipment does cause harmful interference to radio or television reception, which is found by turning the equipment off and on, the user is encouraged to try to correct the interference by one or more of the following measures:

- Reorient or relocate the receiving antenna
- Increase the separation between the equipment or devices
- Connect the equipment to an outlet other than the receiver's
- Consult a dealer or an experienced radio/TV technician for assistance

FCC Caution: Any changes or modifications not expressly approved by the party responsible for compliance could void the user's authority to operate this equipment.

SAR compliance has been established in typical laptop computer(s) with USB slot, and product could be used in typical laptop computer with USB slot. Other application like handheld PC or similar device has not been verified and may not compliance with related RF exposure rule and such use shall be prohibited.

IMPORTANT NOTE:

FCC Radiation Exposure Statement

This equipment complies with FCC radiation exposure limits set forth for an uncontrolled environment. End users must follow the specific operating instructions for satisfying RF exposure compliance.

This transmitter must not be co-located or operating in conjunction with any other antenna or transmitter. IEEE 802.11b or 802.11g operation of this product in the USA is firmware-limited to channels 1 through 11.

This EUT is compliance with SAR for general population/uncontrolled exposure limits in ANSI/IEEE C95.1-1999 and had been tested in accordance with the measurement methods and procedures specified in OET Bulletin 65 Supplement C.

Safety Notices

- **Caution:** To reduce the risk of fire, use only No.26 AWG or larger telecommunication line cord.
- Do not use this product near water, for example, in a wet basement or near a swimming pool.
- Avoid using this product during an electrical storm. There may be a remote risk of electric shock from lightning.



WARNING: This product contains lead, known to the State of California to cause cancer, and birth defects or other reproductive harm. Wash hands after handling.

Wireless Disclaimer

The maximum performance for wireless is derived from IEEE Standard 802.11 specifications. Actual performance can vary, including lower wireless network capacity, data throughput rate, range and coverage. Performance depends on many factors, conditions and variables, including distance from the access point, volume of network traffic, building materials and construction, operating system used, mix of wireless products used, interference and other adverse conditions.

Avis de non-responsabilité concernant les appareils sans fil


Les performances maximales pour les réseaux sans fil sont tirées des spécifications de la norme IEEE 802.11. Les performances réelles peuvent varier, notamment en fonction de la capacité du réseau sans fil, du débit de la transmission de données, de la portée et de la couverture. Les performances dépendent de facteurs, conditions et variables multiples, en particulier de la distance par rapport au point d'accès, du volume du trafic réseau, des matériaux utilisés dans le bâtiment et du type de construction, du système d'exploitation et de la combinaison de produits sans fil utilisés, des interférences et de toute autre condition défavorable.

User Information for Consumer Products Covered by EU Directive 2002/96/EC on Waste Electric and Electronic Equipment (WEEE)


This document contains important information for users with regards to the proper disposal and recycling of Linksys products. Consumers are required to comply with this notice for all electronic products bearing the following symbol:




English - Environmental Information for Customers in the European Union

European Directive 2002/96/EC requires that the equipment bearing this symbol  on the product and/or its packaging must not be disposed of with unsorted municipal waste. The symbol indicates that this product should be disposed of separately from regular household waste streams. It is your responsibility to dispose of this and other electric and electronic equipment via designated collection facilities appointed by the government or local authorities. Correct disposal and recycling will help prevent potential negative consequences to the environment and human health. For more detailed information about the disposal of your old equipment, please contact your local authorities, waste disposal service, or the shop where you purchased the product.


Български (Bulgarian) - Информация относно опазването на околната среда за потребители в Европейския съюз

Европейска директива 2002/96/EC изисква уредите, носещи този символ  върху изделието и/или опаковката му, да не се изхвърлят с несортирани битови отпадъци. Символът обозначава, че изделието трябва да се изхвърля отделно от сметосъбирането на обикновените битови отпадъци. Вашата отговорност е този и другите електрически и електронни уреди да се изхвърлят в предварително определени от държавните или общински органи специализирани пунктове за събиране. Правилното изхвърляне и рециклиране ще спомогнат да се предотвратят евентуални вредни за околната среда и здравето на населението последствия. За по-подробна информация относно изхвърлянето на вашите стари уреди се обърнете към местните власти, службите за сметосъбиране или магазина, от който сте закупили уреда.


Čeština (Czech) - Informace o ochraně životního prostředí pro zákazníky v zemích Evropské unie

Evropská směrnice 2002/96/ES zakazuje, aby zařízení označené tímto symbolem  na produktu anebo na obalu bylo likvidováno s netříděným komunálním odpadem. Tento symbol udává, že daný produkt musí být likvidován odděleně od běžného komunálního odpadu. Odpovídáte za likvidaci tohoto produktu a dalších elektrických a elektronických zařízení prostřednictvím určených sběrných míst stanovených vládou nebo místními úřady. Správná likvidace a recyklace pomáhá předcházet potenciálním negativním dopadům na životní prostředí a lidské zdraví. Podrobnější informace o likvidaci starého vybavení si laskavě vyžádejte od místních úřadů, podniku zabývajícího se likvidací komunálních odpadů nebo obchodu, kde jste produkt zakoupili.


Dansk (Danish) - Miljøinformation for kunder i EU

EU-direktiv 2002/96/EF kræver, at udstyr der bærer dette symbol  på produktet og/eller emballagen ikke må bortskaffes som usorteret kommunalt affald. Symbolet betyder, at dette produkt skal bortskaffes adskilt fra det almindelige husholdningsaffald. Det er dit ansvar at bortskaffe dette og andet elektrisk og elektronisk udstyr via bestemte indsamlingssteder udpeget af staten eller de lokale myndigheder. Korrekt bortskaffelse og genvinding vil hjælpe med til at undgå mulige skader for miljøet og menneskers sundhed. Kontakt venligst de lokale myndigheder, renovationstjenesten eller den butik, hvor du har købt produktet, angående mere detaljeret information om bortskaffelse af dit gamle udstyr.


Deutsch (German) - Umweltinformation für Kunden innerhalb der Europäischen Union

Die Europäische Richtlinie 2002/96/EC verlangt, dass technische Ausrüstung, die direkt am Gerät und/oder an der Verpackung mit diesem Symbol versehen ist , nicht zusammen mit unsortiertem Gemeindeabfall entsorgt werden darf. Das Symbol weist darauf hin, dass das Produkt von regulärem Hausaltmüll getrennt entsorgt werden sollte. Es liegt in Ihrer Verantwortung, dieses Gerät und andere elektrische und elektronische Geräte über die dafür zuständigen und von der Regierung oder örtlichen Behörden dazu bestimmten Sammelstellen zu entsorgen. Ordnungsgemäßes Entsorgen und Recyceln trägt dazu bei, potentielle negative Folgen für Umwelt und die menschliche Gesundheit zu vermeiden. Wenn Sie weitere Informationen zur Entsorgung Ihrer Altgeräte benötigen, wenden Sie sich bitte an die örtlichen Behörden oder städtischen Entsorgungsdienste oder an den Händler, bei dem Sie das Produkt erworben haben.


Eesti (Estonian) - Keskkonnaalane informatsioon Euroopa Liidus asuvatele klientidele

Euroopa Liidu direktiivi 2002/96/EÜ nõuete kohaselt on seadmeid, millel on tootel või pakendil käesolev sümbol , keelatud kõrvaldada koos sorteerimata olmejäätmetega. See sümbol näitab, et toode tuleks kõrvaldada eraldi tavalistest olmejäätmevoogudest. Olete kohustatud kõrvaldama käesoleva ja ka muud elektri- ja elektroonikaseadmed riigi või kohalike ametiasutuste poolt ette nähtud kogumispunktide kaudu. Seadmete korrektn kõrvaldamine ja ringlussevõtt aitab vältida võimalikke negatiivseid tagajärgi keskkonnale ning inimeste tervisele. Vanade seadmete kõrvaldamise kohta täpsema informatsiooni saamiseks võtke palun ühendust kohalike ametiasutustega, jäätmekäitlusfirmaga või kauplusega, kust te toote ostsite.


Español (Spanish) - Información medioambiental para clientes de la Unión Europea

La Directiva 2002/96/CE de la UE exige que los equipos que lleven este símbolo  en el propio aparato y/o en su embalaje no deben eliminarse junto con otros residuos urbanos no seleccionados. El símbolo indica que el producto en cuestión debe separarse de los residuos domésticos convencionales con vistas a su eliminación. Es responsabilidad suya desechar este y cualesquiera otros aparatos eléctricos y electrónicos a través de los puntos de recogida que ponen a su disposición el gobierno y las autoridades locales. Al desechar y reciclar correctamente estos aparatos estará contribuyendo a evitar posibles consecuencias negativas para el medio ambiente y la salud de las personas. Si desea obtener información más detallada sobre la eliminación segura de su aparato usado, consulte a las autoridades locales, al servicio de recogida y eliminación de residuos de su zona o pregunte en la tienda donde adquirió el producto.

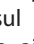
Ελληνικά (Greek) - Στοιχεία περιβαλλοντικής προστασίας για πελάτες εντός της Ευρωπαϊκής Ένωσης

Η Κοινοτική Οδηγία 2002/96/EC απαιτεί ότι ο εξοπλισμός ο οποίος φέρει αυτό το σύμβολο  στο προϊόν και/ή στη συσκευασία του δεν πρέπει να απορρίπτεται μαζί με τα μικτά κοινотικά απορρίμματα. Το σύμβολο υποδεικνύει ότι αυτό το προϊόν θα πρέπει να απορρίπτεται ξεχωριστά από τα συνήθη οικιακά απορρίμματα. Είστε υπεύθυνος για την απόρριψη του παρόντος και άλλου ηλεκτρικού και ηλεκτρονικού εξοπλισμού μέσω των καθορισμένων εγκαταστάσεων συγκέντρωσης απορριμμάτων οι οποίες παρέχονται από το κράτος ή τις αρμόδιες τοπικές αρχές. Η σωστή απόρριψη και ανακύκλωση συμβάλλει στην πρόληψη πιθανών αρνητικών συνεπειών για το περιβάλλον και την υγεία. Για περισσότερες πληροφορίες σχετικά με την απόρριψη του παλιού σας εξοπλισμού, παρακαλώ επικοινωνήστε με τις τοπικές αρχές, τις υπηρεσίες απόρριψης ή το κατάστημα από το οποίο αγοράσατε το προϊόν.

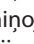
Français (French) - Informations environnementales pour les clients de l'Union européenne

La directive européenne 2002/96/CE exige que l'équipement sur lequel est apposé ce symbole  sur le produit et/ou son emballage ne soit pas jeté avec les autres ordures ménagères. Ce symbole indique que le produit doit être éliminé dans un circuit distinct de celui pour les déchets des ménages. Il est de votre responsabilité de jeter ce matériel ainsi que tout autre matériel électrique ou électronique par les moyens de collecte indiqués par le gouvernement et les pouvoirs publics des collectivités territoriales. L'élimination et le recyclage en bonne et due forme ont pour but de lutter contre l'impact néfaste potentiel de ce type de produits sur l'environnement et la santé publique. Pour plus d'informations sur le mode d'élimination de votre ancien équipement, veuillez prendre contact avec les pouvoirs publics locaux, le service de traitement des déchets, ou l'endroit où vous avez acheté le produit.


Italiano (Italian) - Informazioni relative all'ambiente per i clienti residenti nell'Unione Europea

La direttiva europea 2002/96/EC richiede che le apparecchiature contrassegnate con questo simbolo  sul prodotto e/o sull'imballaggio non siano smaltite insieme ai rifiuti urbani non differenziati. Il simbolo indica che questo prodotto non deve essere smaltito insieme ai normali rifiuti domestici. È responsabilità del proprietario smaltire sia questi prodotti sia le altre apparecchiature elettriche ed elettroniche mediante le specifiche strutture di raccolta indicate dal governo o dagli enti pubblici locali. Il corretto smaltimento ed il riciclaggio aiuteranno a prevenire conseguenze potenzialmente negative per l'ambiente e per la salute dell'essere umano. Per ricevere informazioni più dettagliate circa lo smaltimento delle vecchie apparecchiature in Vostro possesso, Vi invitiamo a contattare gli enti pubblici di competenza, il servizio di smaltimento rifiuti o il negozio nel quale avete acquistato il prodotto.

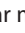
Latviešu valoda (Latvian) - Ekoloģiska informācija klientiem Eiropas Savienības jurisdikcijā

Direktīvā 2002/96/EK ir prasība, ka aprīkojumu, kam pievienota zīme  uz paša izstrādājuma vai uz tā iesaiņojuma, nedrīkst izmest nešķīrotā veidā kopā ar komunālajiem atkritumiem (tiem, ko rada vietēji iedzīvotāji un uzņēmumi). Šī zīme nozīmē to, ka šī ierīce ir jāizmet atkritumos tā, lai tā nenonāktu kopā ar parastiem mājsaimniecības atkritumiem. Jūsu pienākums ir šo un citas elektriskas un elektroniskas ierīces izmest atkritumos, izmantojot īpašus atkritumu savākšanas veidus un līdzekļus, ko nodrošina valsts un pašvaldību iestādes. Ja izmešana atkritumos un pārstrāde tiek veikta pareizi, tad mazinās iespējamais kaitējums dabai un cilvēku veselībai. Sīkākas ziņas par novecojuša aprīkojuma izmešanu atkritumos jūs varat saņemt vietējā pašvaldībā, atkritumu savākšanas dienestā, kā arī veikalā, kur iegādājāties šo izstrādājumu.

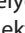
Lietuvškai (Lithuanian) - Aplinkosaugos informacija, skirta Europos Sąjungos vartotojams

Europos direktyva 2002/96/EC numato, kad įrangos, kuri ir  kurios pakuotė yra pažymėta šiuo simboliu (įveskite simbolį), negalima šalinti kartu su nerūšiuotomis komunalinėmis atliekomis. Šis simbolis rodo, kad gaminį reikia šalinti atskirai nuo bendro buitinių atliekų srauto. Jūs privalote užtikrinti, kad ši ir kita elektros ar elektroninė įranga būtų šalinama per tam tikras nacionalinės ar vietinės valdžios nustatytas atliekų rinkimo sistemas. Tinkamai šalinant ir perdirbant atliekas, bus išvengta galimos žalos aplinkai ir žmonių sveikatai. Daugiau informacijos apie jūsų senos įrangos šalinimą gali pateikti vietinės valdžios institucijos, atliekų šalinimo tarnybos arba parduotuvės, kuriose įsigijote tą gaminį.


Malti (Maltese) - Informazzjoni Ambjentali għal Kliġenti fl-Unjoni Ewropea

Id-Direttiva Ewropea 2002/96/KE titlob li t-tagħmir li jkun fi h is-simbolu  fuq il-prodott u/jew fuq l-ippakkjar ma jistax jintrema ma' skart muniċipali li ma għex isseparat. Is-simbolu jindika li dan il-prodott għandu jintrema separatament minn ma' l-iskart domestiku regolari. Hija responsabbiltà tiegħek li tarmi dan it-tagħmir u kull tagħmir ieħor ta' l-elettriku u elettroniku permezz ta' faċilitajiet ta' għbir appuntati apposta mill-gvern jew mill-awtoritajiet lokali. Ir-rimi b'mod korrett u r-riċiklaġġ jgħin jipprevjeni konsegwenzi negattivi potenzjali għall-ambjent u għas-saħħa tal-bniedem. Għal aktar informazzjoni dettaljata dwar ir-rimi tat-tagħmir antik tiegħek, jekk jogħġbok ikkuntattja lill-awtoritajiet lokali tiegħek, is-servizzi għar-rimi ta' l-iskart, jew il-fanutt minn fejn xtrajt il-prodott.


Magyar (Hungarian) - Környezetvédelmi információ az európai uniós vásárlók számára

A 2002/96/EC számú európai uniós irányelv megkívánja, hogy azokat a termékeket, amelyeken, és/vagy amelyek csomagolásán az alábbi címke  megjelenik, tilos a többi szelektálatlan lakossági hulladékkal együtt kidobni. A címke azt jelöli, hogy az adott termék kidobásakor a szokványos háztartási hulladékékezállítási rendszerektől elkülönített eljárást kell alkalmazni. Az Ön felelőssége, hogy ezt, és más elektromos és elektronikus berendezéseit a kormányzati vagy a helyi hatóságok által kijelölt gyűjtőredszereken keresztül számolja fel. A megfelelő hulladékfeldolgozás segít a környezetre és az emberi egészségre potenciálisan ártalmas negatív hatások megelőzésében. Ha elavult berendezéseinek felszámolásához további részletes információra van szüksége, kérjük, lépjen kapcsolatba a helyi hatóságokkal, a hulladékfeldolgozási szolgálattal, vagy azzal üzlettel, ahol a terméket vásárolta.


Nederlands (Dutch) - Milieu-informatie voor klanten in de Europese Unie

De Europese Richtlijn 2002/96/EC schrijft voor dat apparatuur die is voorzien van dit symbool  op het product of de verpakking, niet mag worden ingezameld met niet-gescheiden huishoudelijk afval. Dit symbool geeft aan dat het product apart moet worden ingezameld. U bent zelf verantwoordelijk voor de vernietiging van deze en andere elektrische en elektronische apparatuur via de daarvoor door de landelijke of plaatselijke overheid aangewezen inzamelingskanalen. De juiste vernietiging en recycling van deze apparatuur voorkomt mogelijke negatieve gevolgen voor het milieu en de gezondheid. Voor meer informatie over het vernietigen van uw oude apparatuur neemt u contact op met de plaatselijke autoriteiten of afvalverwerkingsdienst, of met de winkel waar u het product hebt aangeschaft.


Norsk (Norwegian) - Miljøinformasjon for kunder i EU

EU-direktiv 2002/96/EF krever at utstyr med følgende symbol  avbildet på produktet og/eller pakningen, ikke må kastes sammen med usortert avfall. Symbolet indikerer at dette produktet skal håndteres atskilt fra ordinær avfallsinnsamling for husholdningsavfall. Det er ditt ansvar å kvitte deg med dette produktet og annet elektrisk og elektronisk avfall via egne innsamlingsordninger slik myndighetene eller kommunene bestemmer. Korrekt avfallshåndtering og gjenvinning vil være med på å forhindre mulige negative konsekvenser for miljø og helse. For nærmere informasjon om håndtering av det kasserte utstyret ditt, kan du ta kontakt med kommunen, en innsamlingsstasjon for avfall eller butikken der du kjøpte produktet.


Polski (Polish) - Informacja dla klientów w Unii Europejskiej o przepisach dotyczących ochrony środowiska

Dyrektywa Europejska 2002/96/EC wymaga, aby sprzęt oznaczony symbolem  znajdującym się na produkcie i/lub jego opakowaniu nie był wyrzucany razem z innymi niesortowanymi odpadami komunalnymi. Symbol ten wskazuje, że produkt nie powinien być usuwany razem ze zwykłymi odpadami z gospodarstw domowych. Na Państwu spoczywa obowiązek wyrzucania tego i innych urządzeń elektrycznych oraz elektronicznych w punktach odbioru wyznaczonych przez władze krajowe lub lokalne. Pozbywanie się sprzętu we właściwy sposób i jego recykling pomogą zapobiec potencjalnie negatywnym konsekwencjom dla środowiska i zdrowia ludzkiego. W celu uzyskania szczegółowych informacji o usuwaniu starego sprzętu, prosimy zwrócić się do lokalnych władz, służb oczyszczania miasta lub sklepu, w którym produkt został nabyty.


Português (Portuguese) - Informação ambiental para clientes da União Europeia

A Directiva Europeia 2002/96/CE exige que o equipamento que exibe este símbolo  no produto e/ou na sua embalagem não seja eliminado junto com os resíduos municipais não separados. O símbolo indica que este produto deve ser eliminado separadamente dos resíduos domésticos regulares. É da sua responsabilidade eliminar este e qualquer outro equipamento eléctrico e electrónico através das instalações de recolha designadas pelas autoridades governamentais ou locais. A eliminação e reciclagem correctas ajudarão a prevenir as consequências negativas para o ambiente e para a saúde humana. Para obter informações mais detalhadas sobre a forma de eliminar o seu equipamento antigo, contacte as autoridades locais, os serviços de eliminação de resíduos ou o estabelecimento comercial onde adquiriu o produto.


Română (Romanian) - Informații de mediu pentru clienții din Uniunea Europeană

Directiva europeană 2002/96/CE impune ca echipamentele care prezintă acest simbol  pe produs și/sau pe ambalajul acestuia să nu fie casate împreună cu gunoiul menajer municipal. Simbolul indică faptul că acest produs trebuie să fie casat separat de gunoiul menajer obișnuit. Este responsabilitatea dvs. să cașiți acest produs și alte echipamente electrice și electronice prin intermediul unităților de colectare special desemnate de guvern sau de autoritățile locale. Casarea și reciclarea corecte vor ajuta la prevenirea potențialelor consecințe negative asupra sănătății mediului și a oamenilor. Pentru mai multe informații detaliate cu privire la casarea acestui echipament vechi, contactați autoritățile locale, serviciul de salubritate sau magazinul de la care ați achiziționat produsul.


Slovenčina (Slovak) - Informácie o ochrane životného prostredia pre zákazníkov v Európskej únii

Podľa európskej smernice 2002/96/ES zariadenie s týmto symbolom  na produkte a/alebo jeho balení nesmie byť likvidované spolu s netriedeným komunálnym odpadom. Symbol znamená, že produkt by sa mal likvidovať oddelene od bežného odpadu z domácností. Je vašou povinnosťou likvidovať toto i ostatné elektrické a elektronické zariadenia prostredníctvom špecializovaných zberných zariadení určených vládou alebo miestnymi orgánmi. Správna likvidácia a recyklácia pomôže zabrániť prípadným negatívnym dopadom na životné prostredie a zdravie ľudí. Ak máte záujem o podrobnejšie informácie o likvidácii starého zariadenia, obráťte sa, prosím, na miestne orgány, organizácie zaoberajúce sa likvidáciou odpadov alebo obchod, v ktorom ste si produkt zakúpili.


Slovenčina (Slovene) - Okoljske informacije za stranke v Evropski uniji

Evropska direktiva 2002/96/EC prepoveduje odlaganje opreme, označene s tem simbolom  – na izdelku in/ali na embalaži – med običajne, nerazvrščene odpadke. Ta simbol opozarja, da je treba izdelek odvreči ločeno od preostalih gospodinjskih odpadkov. Vaša odgovornost je, da to in preostalo električno in elektronsko opremo odnesete na posebna zbirališča, ki jih določijo državne ustanove ali lokalna uprava. S pravilnim odlaganjem in recikliranjem boste preprečili morebitne škodljive vplive na okolje in zdravje ljudi. Če želite izvedeti več o odlaganju stare opreme, se obrnite na lokalno upravo, odpad ali trgovino, kjer ste izdelek kupili.

Suomi (Finnish) - Ympäristöä koskevia tietoja EU-alueen asiakkaille

EU-direktiivi 2002/96/EY edellyttää, että jos laitteistossa on tämä symboli  itse tuotteessa ja/tai sen pakkauksessa, laitteistoa ei saa hävittää lajittelemattoman yhdyskuntajätteen mukana. Symboli merkitsee sitä, että tämä tuote on hävitettävä erillään tavallisesta kotitalousjätteestä. Sinun vastuullasi on hävittää tämä elektroniikkatuote ja muut vastaavat elektroniikkatuotteet viemällä tuote tai tuotteet viranomaisten määräämään keräyspisteeseen. Laitteiston oikea hävittäminen estää mahdolliset kielteiset vaikutukset ympäristöön ja ihmisten terveyteen. Lisätietoja vanhan laitteiston oikeasta hävitystavasta saa paikallisilta viranomaisilta, jätteenhävityspalvelusta tai siitä myymälästä, josta ostit tuotteen.

Svenska (Swedish) - Miljöinformation för kunder i Europeiska unionen

Det europeiska direktivet 2002/96/EC kräver att utrustning med denna symbol  på produkten och/eller förpackningen inte får kastas med osorterat kommunalt avfall. Symbolen visar att denna produkt bör kastas efter att den avskiljts från vanligt hushållsavfall. Det faller på ditt ansvar att kasta denna och annan elektrisk och elektronisk utrustning på fastställda samlingsplatser utsedda av regeringen eller lokala myndigheter. Korrekt kassering och återvinning skyddar mot eventuella negativa konsekvenser för miljön och personhälsa. För mer detaljerad information om kassering av din gamla utrustning kontaktar du dina lokala myndigheter, avfallshanteringen eller butiken där du köpte produkten.



WEB: For additional information, please visit www.linksys.com