

## The Status Tab - Wireless

The *Wireless* screen on the Status Tab displays the status of your wireless network.

**MAC Address.** This is the Router's MAC Address, as seen on your local, wireless network.

**Mode.** As selected from the Wireless tab, this will display the wireless mode (Mixed, G-Only, or Disabled) used by the network.

**SSID.** As entered on the Wireless tab, this will display the wireless network name or SSID.

**DHCP Server.** If you are using the Router as a DHCP server, that will be displayed here.

**Channel.** As entered on the Wireless tab, this will display the channel on which your wireless network is broadcasting.

**Encryption Function.** As selected on the Security Tab, this will display what type of encryption the Router uses for security.

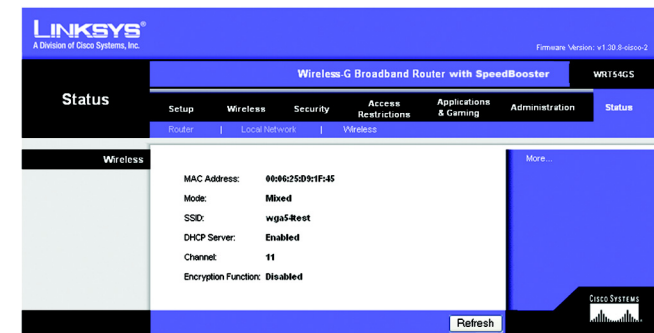


Figure 6-46: Status Tab - Wireless

*encryption: encoding data transmitted in a network*

# Chapter 7: Using the Linksys Parental Control Service

## Overview

This chapter will describe the Linksys Parental Control Service\*, as well as explain how to sign up for the Service, manage your account, and use the Internet when the Service is actively controlling Internet traffic and messages.

## Introduction

The Linksys Parental Control Service makes it easy for you to keep your family safe on the Internet. The Service gives you powerful tools to control the availability of Internet services, access, and features, customizable for each member of the family.

Choosing from 16 different web content categories, you control what each family member is allowed to see. Each website request triggers a search through our constantly updated database, which determines whether or not to allow the content through, based on who's logged in. You can also manually block or allow specific websites based on your own judgment.

To protect your family from unsolicited messages, you can set up e-mail and Instant Message filters. You select who can send messages to, and receive messages from, your family. If your children are spending too much time online, you can set time restrictions by hour and day of the week.

To keep you informed of your family's online activities, full reports are available to view or download. You can see each family member's blocked and unblocked Internet activities, to keep you “in the loop” on their changing interests. Setting up and customizing each family member's settings is a snap with the friendly web-based menus—even if you're not the family's usual network administrator. Because the Parental Control Service is based in the Router, not your PCs, it can't be bypassed and keeps every Internet device in your household equally protected.

\* Available in US and Canada only.

**database:** *a collection of data that is organized so that its contents can easily be accessed, managed, and updated.*

## Signing up for the Linksys Parental Control Service

There are two ways to access the website you will use to sign up for your Linksys Parental Controls account.

### Setup Wizard

At the end of the Setup Wizard, you will see the *Safe Surfing* screen. Click the **Linksys Parental Control Service** button to sign up for a free trial service. You will be automatically taken to a website where you can create your account. For additional instructions, go to the “Signing up for the Linksys Parental Control Service” section. After you have signed up, you will be asked if you want to manage your account. If so, then you can go directly to the login screen for Linksys Parental Controls Billing and Support Center. Refer to the “Managing Linksys Parental Controls” section.

### Web-based Utility

If you are using the Router's Web-based Utility, go to the Access Restrictions tab - Parental Control screen. Click the **Enable** radio button and then the **Save Settings** button. Then click the **Sign up for Parental Control Service** button. You will be automatically taken to a website where you can create your account. For additional instructions, go to the “Signing up for the Linksys Parental Control Service” section. If you would like more information about the Linksys Parental Control Service, click the **More info** button. If you have already set up your Parental Controls account, click the **Manage Account** button to access it and make changes. For more information, go to the “Managing Linksys Parental Controls” section.



**Note:** To sign up for your Linksys Parental Controls account, you will need an active Internet connection.



Figure 7-1: Safe Surfing

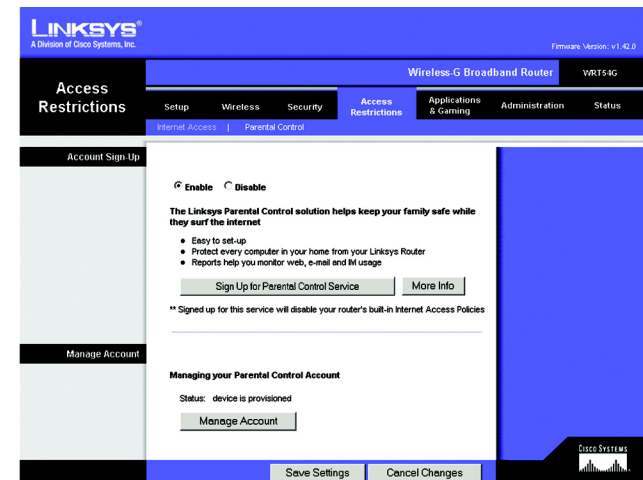


Figure 7-2: Access Restrictions Tab - Parental Control

## Signing up for the Linksys Parental Control Service

To sign up for your Linksys Parental Controls account, you will need an active Internet connection. Then follow these instructions:

1. After you click *Linksys Parental Control Service* from the Setup Wizard or the *Sign Up for Parental Control Service* button from the Web-based Utility, the *Linksys Service Agreement* screen will appear. You must scroll down the entire agreement before you can accept the Agreement. Then click the **Accept** button. If you do not want to accept the Agreement, click the **Cancel** button.
2. The *Sign Up* screen will appear. Enter a User Name and Password for your account. Enter the Password again in the *Confirm Password* field. Then enter your e-mail address in the *Email* field (service e-mail notifications will be sent to this e-mail address) and enter it again in the *Confirm Email* field.

You have a choice of two payment plans, **Pay Now** or **Pay Later**. (If the Router you are using is not eligible for the free trial, then you have one choice, Pay Now.)

If you click Pay Now, go to step 3.

If you click Pay Later, go to step 4.

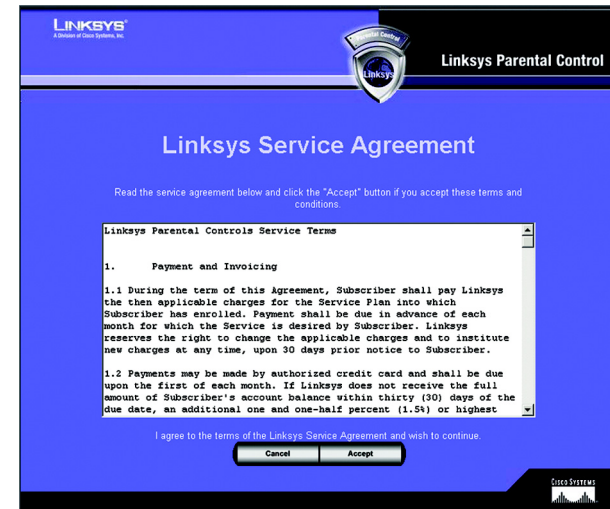


Figure 7-3: Linksys Service Agreement

Special Early Sign-Up prices	
<b>\$24.95</b>	For 6 months (plus 30 days free => 7 months for \$24.95)
<b>\$39.95</b>	For 1 year (plus 30 days free => 13 months for \$39.95)
<b>\$59.95</b>	For 2 years (plus 30 days free => 25 months for \$59.95)

After 15 days, the regular price for the Linksys Parental Control Service is \$29.95 for 6 months, \$49.95 for 1 year and \$69.95 for 2 years.

Figure 7-4: Sign Up

3. To pay now, complete the form on the *Purchase Service* screen. Your account information will automatically appear.

In the *User Information* section, enter your address in the *Address1*, *Address2* (if necessary), *City*, *State/Prov*, and *Zip Code* fields. Select your country from the *Country* drop-down menu. (Your phone number is optional.)

In the *Billing Information* section, select your credit card from the *Credit Card* drop-down menu. Complete the *Credit Card Number* field. From the *Expiration Date* drop-down menus, select the month and year your credit card expires. In the *Full Name on Card* field, enter the complete name that appears on the credit card you are using.

Then click the **Finish** button. To cancel your sign-up, click the **Cancel** button.

**LINKSYS**  
A Division of Cisco Systems, Inc.

**Linksys Parental Control**

### Purchase Service

By purchasing a subscription to the Linksys Parental Control Service you are taking an important step to insuring your family safety while on the Internet. If you signed up for a free trial you get a discount if you purchase a subscription within the first 15 days of the trial.

Select your subscription option

- **\$24.95** For 6 months (plus get 60 days free => 8 months for \$24.95)
- **\$39.95** For 1 year (plus 60 days free => 14 months for \$39.95)
- **\$59.95** For 2 years (plus 60 days free => 26 months for \$59.95)

#### Account Information

User Name: First  Last

Parental Control Password:

Confirm Password:

Email:  Your e-mail address will only be used to send you service administration notices.

#### User Information

Address: Address1  Address2

City  State/Prov

Zip Code  Country

Phone  (include area code or country code)

#### Billing Information

Credit Card:

Credit Card Number:

Expiration Date:  /

Full Name on Card:

Cisco Systems

**Figure 7-5: Purchase Service**

4. The Router will now connect to the Parental Control Service.

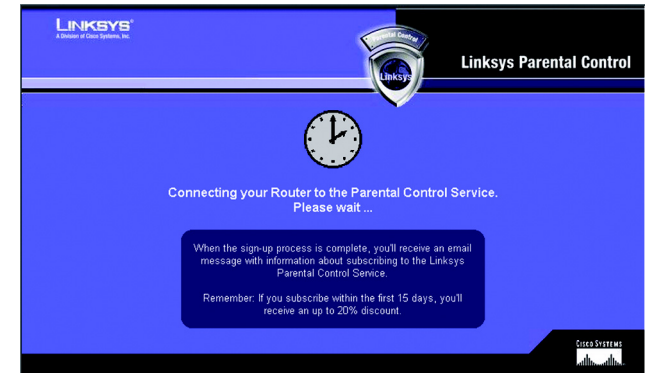


Figure 7-6: Connecting to the Parental Control Service

5. When the sign-up process is complete, you will receive an e-mail message, and you will see the *Congratulations* screen.

If you want to create user profiles for your family members now, click the **Create Profiles** button. For additional instructions, proceed to step 4 of the “Managing Linksys Parental Controls” section.

If you want to access the Internet immediately, click the **Sign in and Surf** button. For more information, go to the “Using the Linksys Parental Control Service” section.

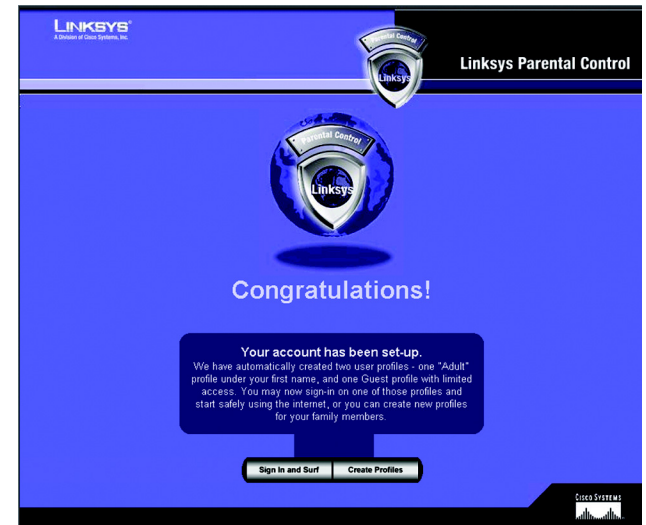
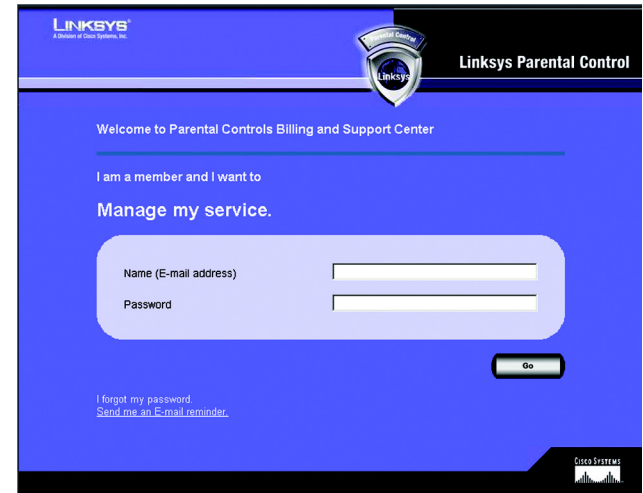


Figure 7-7: Congratulations

## Managing Linksys Parental Controls

To manage your Linksys Parental Controls account, you will need an active Internet connection. Then follow these instructions:

1. Open the Router's Web-based Utility.
2. Click the **Access Restrictions** tab.
3. Click the **Manage Account** button on the *Parental Controls* screen. (This screen also lists the status of your Parental Controls account.)
4. The login screen will appear. For future reference, create a bookmark through your web browser. Complete the *Name* (E-mail address) and *Password* fields.
5. Then click the **Go** button. The *Support Center* screen will appear.



**Figure 7-8: Parental Controls Login**



**Note:** If you have forgotten your password, click **Send me an E-mail reminder** and follow the on-screen instructions.

## Support Center

On the left of the *Support Center* screen, you can access the Activity Reports, Family Settings, and Suggest a Rating webpages. These and the Support Center webpage are accessible from every screen. (Click **Billing and Support** to return to the Support Center webpage.)

On the *Support Center* screen, you also have access to the following:

### Subscribe to Service

Click **Subscribe to Service** to sign up for your Parental Controls subscription before your free trial period expires. The *Purchase Linksys Parental Control Service* screen will appear. Follow these instructions:

1. Select a subscription option.
2. Complete the *Billing Contact Info* and *Billing Information* sections. (Fields marked with an asterisk must be filled out.)
3. Click the **Update** button to save your changes, or click the **Cancel** button to cancel changes.

### Ask for Help

If you need more information about the Parental Control Service, click this link.

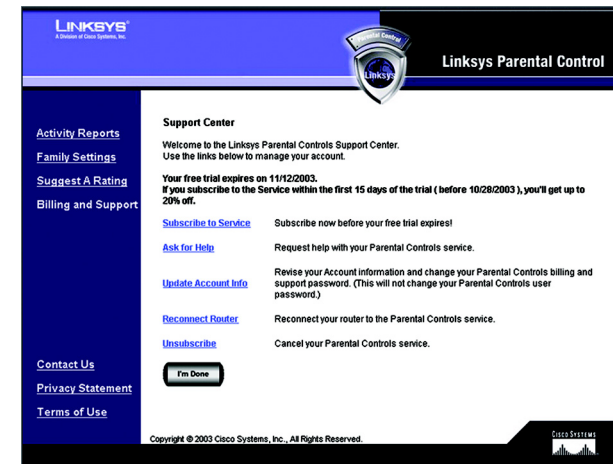


Figure 7-9: Support Center

Figure 7-10: Subscribe to Service



## Update Account Info

Click this link to update your contact information or change your Parental Controls billing and support password (this is separate from your Parental Controls user password). The *Update Contact Information* screen will appear. Follow these instructions:

1. Complete the *First Name* and *Last Name* fields. (Fields marked with an asterisk must be filled out.)
2. Enter your new billing and support password in the *Parental Control Password* field. Re-enter the new password in the *Confirm Password* field.
3. Complete the *Email* field (the e-mail address you enter will receive service administration notices only).
4. Click the **Save** button to save your changes, or click the **Cancel** button to cancel changes.

## Reconnect Router

If the Router has lost its connection to the Parental Control Service or if you have reset the Router back to its factory default settings after you have signed up for Parental Control Service, click **Reconnect Router** to regain the connection.

## Unsubscribe

If you want to cancel your Parental Control Service account, click this link. Click the **Proceed** button on the following screen to cancel your Parental Control Service.

The screenshot shows the 'Update Contact Information' page of the Linksys Parental Control interface. The page has a blue header with the Linksys logo and 'Links Parental Control'. A left sidebar contains links: Activity Reports, Family Settings, Suggest A Rating, Billing and Support, Contact Us, Privacy Statement, and Terms of Use. The main content area is titled 'Update Contact Information' and includes the instruction 'Please revise your personal contact information, as needed.' Below this is a form titled 'Account Information' with fields for 'User Name' (split into \*First and \*Last), 'Parental Control Password', 'Confirm Password', and 'Email'. A note states: 'Your e-mail address will only be used to send you service administration notices.' At the bottom of the form are 'Cancel' and 'Save' buttons. A 'Required Field' icon is at the bottom right. The footer includes 'Copyright © 2003 Cisco Systems, Inc., All Rights Reserved.' and the Cisco Systems logo.

Figure 7-11: Update Contact Information

The screenshot shows the 'Cancel your Parental Control Account' page of the Linksys Parental Control interface. The page has a blue header with the Linksys logo and 'Links Parental Control'. A left sidebar contains links: Activity Reports, Family Settings, Suggest A Rating, Billing and Support, Contact Us, Privacy Statement, and Terms of Use. The main content area is titled 'Cancel your Parental Control Account' and includes the instruction 'Click Proceed to cancel your Parental Control Account.' Below this is a single 'Proceed' button. The footer includes 'Copyright © 2003 Cisco Systems, Inc., All Rights Reserved.' and the Cisco Systems logo.

Figure 7-12: Cancel Your Parental Control Account

## Activity Reports

On the *Activity Reports* screen, you will be able to view a report of Internet activities for your entire family or a specific family member. Click **Family** to view family reports, or click an individual's name to view his or her reports. After you have selected Family or a specific name, you will see a choice of reports to view.

### Reports

For the family or a specific family member, these are the reports you can view:

- Summary (not available if you selected Family)
- Web Report
- Instant-Messaging Report
- E-mail Report

### Summary

Click this link to view a summary of Internet activities, including Top Allowed or Blocked E-mail Addresses, Top Allowed or Blocked Instant-Message Addresses, and Alerts. (This report is not available for the entire family.)

### Web Report

Click this link to view all web-browsing activities. Each entry lists details under five column headings: Date, Family Member, Reason, Web Site, and Web Category. You can click a column heading to sort entries. To view the activities during a specific time period, use the *Day Range* drop-down menu. Click the **Refresh** button to update the report. To delete specific entries, click the checkbox next to specific entries, and then click the **Delete** button. To save all reports to your computer, click the **Download** button. The reports will be saved as a tab-delimited text file called PcReport. To scroll through the entries, click **First**, **Previous**, or **Next**.

### Instant-Messaging Report

Click **Instant-Messaging Report** to see all activities with Instant Messages. Each entry lists details under five column headings: Date, Family Member, Reason, Local Screen Name, and Remote Screen Name. You can click a column heading to sort entries. To view the activities during a specific time period, use the *Day Range* drop-down menu. Click the **Refresh** button to update the report. To delete specific entries, click the checkbox next to specific entries, and then click the **Delete** button. To save all reports to your computer, click the **Download** button. The reports will be saved as a tab-delimited text file called PcReport. To scroll through the entries, click **First**, **Previous**, or **Next**.

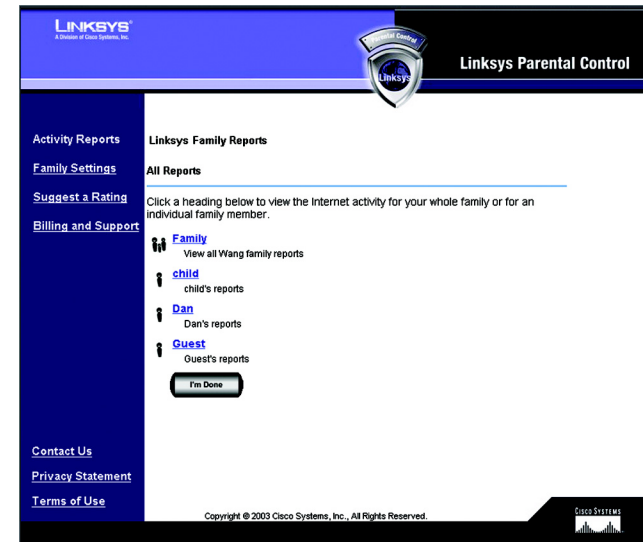


Figure 7-13: Activity Reports

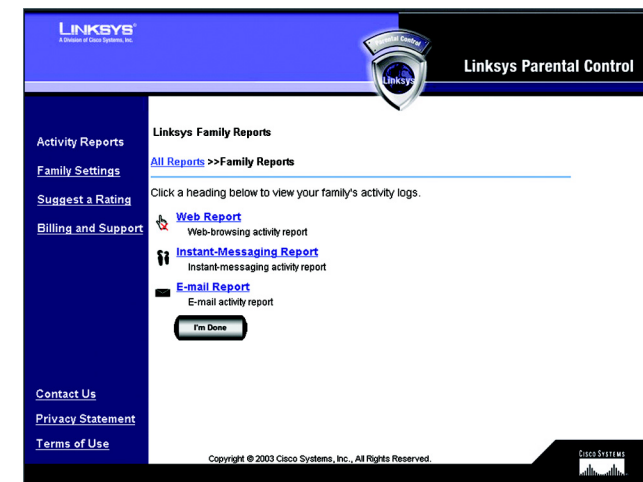


Figure 7-14: Types of Reports