

Using the Setup Wizard

A Follow the first three steps shown on the front under “Using the Auto configuration button”:
Locate an optimum location.
Position the antenna.
Connect the power plate and connect it to a power outlet.

B Insert the Setup Wizard CD into your PC’s CD-ROM drive. Your PC must be communicating with your wireless network to set up the Range Expander.

C Click the **Setup** button from the Setup Wizard’s Welcome screen.

D When the Setup Wizard searches for an access point within your network, continue to **step E** if one is found. If no access point is detected, do the following:

Click **Continue** to survey your network for an access point. **Select the access point** to which you wish to connect and click **Yes**. From the Security Settings screen, **set the level of encryption** on your network, along with entering the appropriate passphrases and/or encryption keys, as described in **step G**.

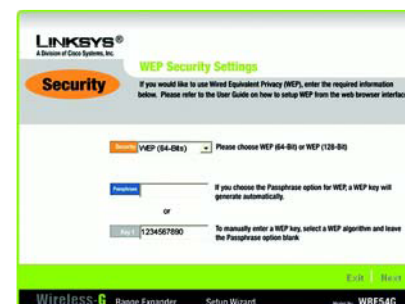
E The Setup Wizard will now search for the Range Expander. Select the one to which you wish to connect from the list shown. Then, click **Yes**.

F Enter the Range Expander’s password. If you have not already set a password, you can type in the default password: **admin**. Then, click **Enter**.

A



D



G

G From the Security Settings screen, you can set the level of encryption on your network, along with entering the appropriate passphrases and/or encryption keys.

A passphrase can consist of no more than 16 alphanumeric characters.

WEP keys should be no more than 10 hexadecimal characters in length for 64-bit encryption or 26 hexadecimal characters in length for 128-bit encryption. All points in your wireless network must use the same WEP key to utilize WEP encryption.

Then, click the **Next** button.

H From the Configure Network Address Settings screen, enter an IP Address, Subnet Mask, the IP Address of your network Gateway, and an Expander Name. Then, click the **Next** button.

IP Address. Enter an IP address for your network. (The default IP address is 192.168.1.240.)

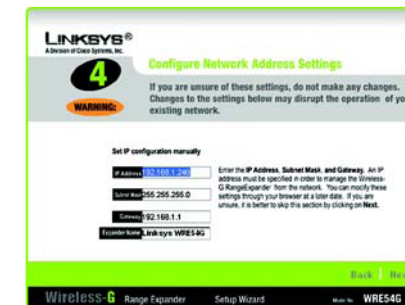
Subnet Mask. This must be the same as your network.

Gateway. This should be the IP address of the gateway device between the Internet and the local network.

Expander Name. Assign the Range Expander any name up to 32 characters long.

I If the settings shown are correct, click the **Yes** button to save these settings.

J The Setup Wizard is complete.



H

LINKSYS
A Division of Cisco Systems, Inc.

For additional information or troubleshooting help, refer to the User Guide on the Setup CD-ROM. You can also call or email for further support.

24-hour Technical Support
800-326-7114
(toll-free from US or Canada)

Email Support
support@linksys.com

Website
<http://www.linksys.com> or
<http://support.linksys.com>

RM A (Return Merchandise Authorization)
<http://www.linksys.com/support>

FTP Site
<ftp://ftp.linksys.com>

Sales Information
800-546-5797 (800-LINKSYS)

Linksys is a registered trademark or trademark of Cisco Systems, Inc. and/or its affiliates in the U.S. and certain other countries. Copyright © 2003 Cisco Systems, Inc. All rights reserved.

WRE54G-FR-Q I-40422NC KL