

**LINKSYS**<sup>®</sup>  
A Division of Cisco Systems, Inc.

## USER GUIDE

# Dual Band Wireless-N Notebook Adapter



Model No: **WPC600N**



## About This Guide

### Icon Descriptions

While reading through the User Guide you may see various icons that call attention to specific items. Below is a description of these icons:



**NOTE:** This check mark indicates that there is a note of interest and is something that you should pay special attention to while using the product.



**WARNING:** This exclamation point indicates that there is a caution or warning and it is something that could damage your property or product.



**WEB:** This globe icon indicates a noteworthy website address or e-mail address.

### Online Resources

Most web browsers allow you to enter the web address without adding the `http://` in front of the address. This User Guide will refer to websites without including `http://` in front of the address. Some older web browsers may require you to add it.

Resource	Website
Linksys	<a href="http://www.linksys.com">www.linksys.com</a>
Linksys International	<a href="http://www.linksys.com/international">www.linksys.com/international</a>
Glossary	<a href="http://www.linksys.com/glossary">www.linksys.com/glossary</a>
Network Security	<a href="http://www.linksys.com/security">www.linksys.com/security</a>

### Copyright and Trademarks

Specifications are subject to change without notice. Linksys is a registered trademark or trademark of Cisco Systems, Inc. and/or its affiliates in the U.S. and certain other countries. Copyright © 2007 Cisco Systems, Inc. All rights reserved. Other brands and product names are trademarks or registered trademarks of their respective holders.

<b>Chapter 1: Product Overview</b>	<b>1</b>
LEDs . . . . .	1
<b>Chapter 2: Wireless Security Checklist</b>	<b>2</b>
General Network Security Guidelines . . . . .	2
Additional Security Tips . . . . .	2
<b>Chapter 3: Advanced Configuration</b>	<b>3</b>
Accessing the Wireless Network Monitor. . . . .	3
Using the Wireless Network Monitor . . . . .	3
Link Information . . . . .	3
Connect . . . . .	4
Profiles . . . . .	5
<b>Appendix A: Troubleshooting</b>	<b>13</b>
<b>Appendix B: Specifications</b>	<b>14</b>
<b>Appendix C: Windows XP Wireless Zero Configuration</b>	<b>15</b>
Windows XP Wireless Zero Configuration . . . . .	15
<b>Appendix D: Warranty and Regulatory Information</b>	<b>17</b>
Limited Warranty. . . . .	17
FCC Statement . . . . .	17
FCC Radiation Exposure Statement . . . . .	18
Industry Canada Statement . . . . .	18
Declaration d'Industrie Canada. . . . .	18
Industry Canada Radiation Exposure Statement:. . . . .	18
Safety Notices. . . . .	18
Wireless Disclaimer . . . . .	18
Avis de non-responsabilité concernant les appareils sans fil . . . . .	18
User Information for Consumer Products Covered by EU Directive 2002/96/EC on Waste Electric and Electronic Equipment (WEEE) . . . . .	19

## Chapter 1: Product Overview

Thank you for choosing the Dual-Band Wireless-N Notebook Adapter. Setting up your network and your Dual Band Wireless-N Notebook Adapter is easier than ever.

How does the Adapter do this? Like all wireless products, the Adapter allows for greater range and mobility within your wireless network, whether it's using the Wireless-A (802.11a), Wireless-G (802.11g) or Wireless-B (802.11b) standard. But with Wireless-N, it has even better range and speed.

### LEDs



**Power** **Power** (Green) The Power LED lights up when the Adapter is powered on.

**Link/Act** **Link/Act** (Green) The Link/Act LED lights up when the Adapter has an active connection.

## Chapter 2: Wireless Security Checklist

Wireless networks are convenient and easy to install, so homes with high-speed Internet access are adopting them at a rapid pace. Because wireless networking operates by sending information over radio waves, it can be more vulnerable to intruders than a traditional wired network. Like signals from your cellular or cordless phones, signals from your wireless network can also be intercepted. Since you cannot physically prevent someone from connecting to your wireless network, you need to take some additional steps to keep your network secure.

### 1. Change the default wireless network name or SSID

Wireless devices have a default wireless network name or Service Set Identifier (SSID) set by the factory. This is the name of your wireless network, and can be up to 32 characters in length. Linksys wireless products use **linksys** as the default wireless network name. You should change the wireless network name to something unique to distinguish your wireless network from other wireless networks that may exist around you, but do not use personal information (such as your Social Security number) because this information may be available for anyone to see when browsing for wireless networks.

### 2. Change the default password

For wireless products such as access points and routers, you will be asked for a password when you want to change their settings. These devices have a default password set by the factory. The Linksys default password is **admin**. Hackers know these defaults and may try to use them to access your wireless device and change your network settings. To thwart any unauthorized changes, customize the device's password so it will be hard to guess.

### 3. Enable MAC address filtering

Linksys routers give you the ability to enable Media Access Control (MAC) address filtering. The MAC address is a unique series of numbers and letters assigned to every networking device. With MAC address filtering enabled, wireless network access is provided solely for wireless devices with specific MAC addresses. For example, you can specify the MAC address of each computer in your home so that only those computers can access your wireless network.

### 4. Enable encryption

Encryption protects data transmitted over a wireless network. Wi-Fi Protected Access (WPA/WPA2) and Wired Equivalency Privacy (WEP) offer different levels of security for wireless communication.

A network encrypted with WPA/WPA2 is more secure than a network encrypted with WEP, because WPA/WPA2 uses dynamic key encryption. To protect the information as it passes over the airwaves, you should enable the highest level of encryption supported by your network equipment.

WEP is an older encryption standard and may be the only option available on some older devices that do not support WPA.

### General Network Security Guidelines

Wireless network security is useless if the underlying network is not secure.

- Password protect all computers on the network and individually password protect sensitive files.
- Change passwords on a regular basis.
- Install anti-virus software and personal firewall software.
- Disable file sharing (peer-to-peer). Some applications may open file sharing without your consent and/or knowledge.

### Additional Security Tips

- Keep wireless routers, access points, or gateways away from exterior walls and windows.
- Turn wireless routers, access points, or gateways off when they are not being used (at night, during vacations).
- Use strong passphrases that are at least eight characters in length. Combine letters and numbers to avoid using standard words that can be found in the dictionary.



**WEB:** For more information on wireless security, visit [www.linksys.com/security](http://www.linksys.com/security)

## Chapter 3: Advanced Configuration

Advanced configuration is done through the Wireless Network Monitor (the Monitor). You can use the Monitor to check the link information, search for available wireless networks, or create profiles that hold different configuration settings.

### Accessing the Wireless Network Monitor

After installing the Adapter, the Wireless Network Monitor icon appears in the system tray of your computer. If the Wireless Network Monitor is enabled, the icon is green. If the Wireless Network Monitor is disabled or the Adapter is not connected, the icon is gray.



### Using the Wireless Network Monitor

The opening screen of the Wireless Network Monitor is the *Link Information* screen. From this screen, you can find out how strong the current wireless signal is and how good the connection's quality is. You can also click **More Information** to view additional status information about the current wireless connection. To search for available wireless networks, click the **Connect** tab. To perform configuration changes or create connection profiles, click the **Profiles** tab.

### Link Information

The *Link Information* screen displays network mode, signal strength, and link quality information about the current connection. It also provides a More Information button to click for additional status information.



Link Information

**Ad-Hoc Mode or Infrastructure Mode** The screen indicates whether the Adapter is currently working in ad-hoc or infrastructure mode.

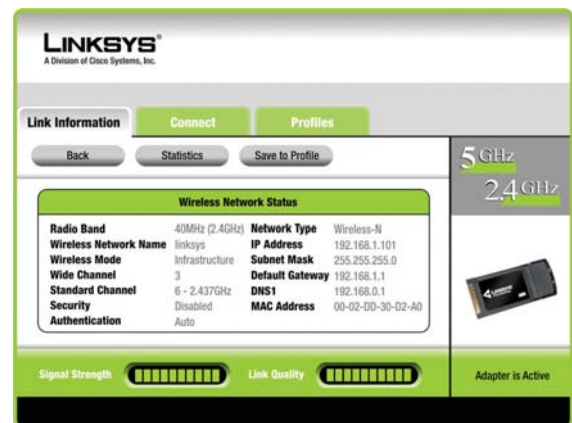
**Signal Strength** The Signal Strength bar indicates signal strength.

**Link Quality** The Link Quality bar indicates the quality of the wireless network connection.

Click **More Information** to view additional information about the wireless network connection on the *Wireless Network Status* screen.

### Wireless Network Status

The *Wireless Network Status* screen provides information on your current network settings.



Wireless Network Status

**Radio Band** This is the radio band used on the network.

**Wireless Network Name** This is the unique name (SSID) of the wireless network.

**Wireless Mode** This is the mode of the wireless network currently in use.

**Wide Channel** This is the Wireless-N primary channel used with a 40 MHz radio band network.

**Standard Channel** This is the channel used by your wireless network.

**Security** This is the status of the wireless security feature.

**Authentication** This is your wireless network's authentication method.

**Network Type** This is the wireless network type.

**IP Address** This is the IP Address of the Adapter.

**Subnet Mask** This is the Adapter's Subnet Mask.

**Default Gateway** This is the Default Gateway address.

**DNS1** This is the DNS address of the Adapter.

**MAC Address** This is the MAC address of the wireless network's access point or wireless router.

**Signal Strength** The Signal Strength bar indicates the signal strength.

**Link Quality** The Link Quality bar indicates the quality of the wireless network connection.

Click **Statistics** to go to the *Wireless Network Statistics* screen. Click **Back** to return to the initial *Link Information* screen. Click **Save to Profile** to save the currently active connection settings to a profile.

## Wireless Network Statistics

The Wireless Networks Statistics screen provides statistics on your current network settings.



Wireless Network Statistics

**Transmit Rate** This is the data transfer rate of the current connection. (In Auto mode, the Adapter dynamically shifts to the fastest data transfer rate at any given time.)

**Receive Rate** This is the rate that the Adapter receives data.

**Packets Received** This shows the packets that the Adapter receives, in real time, after connecting to the wireless network or after clicking Refresh Statistics.

**Packets Transmitted** This shows the packets that the Adapter transmits, in real time, after connecting to the wireless network or after clicking Refresh Statistics.

**Bytes Received** This shows the bytes that the Adapter receives, in real time, after connecting to the wireless network or after clicking Refresh Statistics.

**Bytes Transmitted** This shows the bytes that the Adapter transmits, in real time, after connecting to the wireless network or after clicking Refresh Statistics.

**Driver Version** This shows the Adapter's driver version.

**Noise Level** This shows the level of background noise that affects the wireless signal. A lower reading translates into a higher quality signal.

**Signal Strength** This is the intensity of the wireless signal that the Adapter receives.

**Transmit Power** This is the power output at which the Adapter transmits.

**Up Time** This indicates the length of the most recent connection to a wireless network.

**Total Up Time** This indicates the cumulative total of the Adapter's connection time.

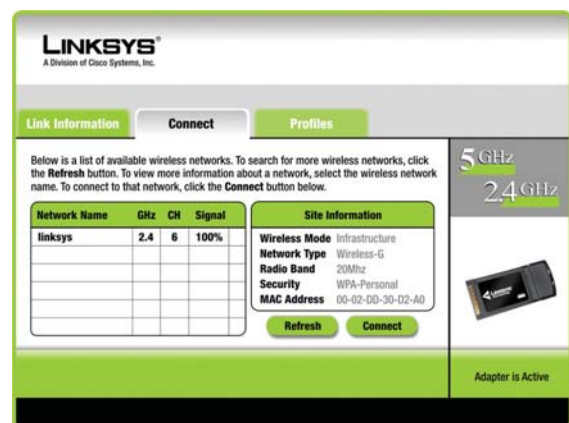
**Signal Strength** The Signal Strength bar indicates the signal strength.

**Link Quality** The Link Quality bar indicates the quality of the wireless network connection.

Click **Back** to return to the initial *Link Information* screen. Click **Status** to go to the *Wireless Network Status* screen. Click **Save to Profile** to save the currently active connection settings to a profile. Click **Refresh** to reset the statistics.

## Connect

The *Connect* screen displays a list of available networks in the table on the left. The table shows each network's wireless network name, channel, and the quality of the wireless signal the Adapter receives. You may click Wireless Network Name, CH (Channel), or Signal, to sort by that field.



Connect

**Wireless Network Name** This is the SSID or unique name of the wireless network.

**CH** This is the channel that the network uses.

**Signal** This is the percentage of signal strength, from 0 to 100%.

## Site Information

For each network selected, the following settings are listed:

**Wireless Mode** This is the mode of the wireless network currently in use.

**Network Type** This is the network type used by your wireless network.

**Radio Band** This is the radio band used by your wireless network.

**Security** This is the status of the wireless security feature.

**MAC Address** This is the MAC address of the wireless network's access point.

**Refresh** Click **Refresh** to perform a new search for wireless devices.

**Connect** To connect to one of the networks on the list, select the wireless network, and click **Connect**. If the network's wireless security is enabled, then one of these wireless security screens appears:

### WEP

If the network has the wireless security WEP encryption enabled, then you see the WEP Key Needed for Connection screen. Select the appropriate level of WEP encryption, **64-bit** or **128-bit**. Then enter the network's Passphrase or WEP Key. Click **Connect**. To cancel the connection, click **Cancel**.

WEP Security

### WPA

If the network has the wireless security WPA Personal security enabled, then you see the WPA Personal Needed for Connection screen. Select the appropriate encryption type, **TKIP** or **AES**. Enter the network's Pre-shared Key in the *Pre-shared Key* field. Then click **Connect**. To cancel the connection, click **Cancel**.

WPA-Personal Security

### WPA2

If the network has WPA2 Personal wireless security enabled, then you will see the WPA2 Personal Needed for Connection screen. Enter the network's Pre-shared Key in the *Pre-shared Key* field. To connect to the network, click **Connect**. To cancel the connection, click **Cancel**.

WPA2-Personal Security

## Profiles

The *Profiles* screen lets you save different configuration profiles for different network setups. The table on the left displays a list of available profiles with their profile names and wireless network names.

Profiles



**Profile** This is the name of the profile.

**Wireless Network Name** This is the SSID or unique name of the wireless network.

## Profile Information

For each profile selected, the following are listed:

**Wireless Network** This is the type of wireless network currently in use.

**Wireless Mode** This is the mode of the wireless network currently in use.

**Standard Channel** This displays the channel used by your wireless network.

**Security** This is the status of the wireless security.

**Authentication** This is the authentication setting for the network.

**Connect** To connect to a wireless network using a specific profile, select the profile, and **click Connect**.

**New** Click **New** to create a new profile. See the next section, "Creating a New Profile," for instructions.

**Edit** Select the profile you want to change and click **Edit**.

**Import** Click **Import** to import a profile that is saved in another location. Select the appropriate file, and click **Open**.

**Export** Select the profile you want to save in a different location, and click **Export**. Direct Windows to the appropriate folder, and click **Save**.

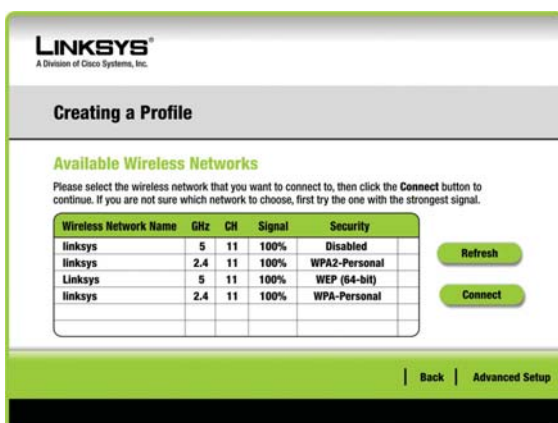
**Delete** Select the profile you want to delete and click **Delete**.



**NOTE:** If you want to export more than one profile, you must export them one at a time.

## Create a New Profile

The next screen is the *Available Wireless Networks* screen.



Available Wireless Networks

This screen provides two options for setting up the Adapter.

**Available Wireless Networks.** (For most users.) Use this option if you already have a network set up. The networks available to this Adapter are listed on this screen. You can choose one of these networks and click **Connect** to connect to it. Click **Refresh** to update the Available Wireless Networks list.

**Advanced Setup.** If your network is not listed on this screen, select **Advanced Setup** to set up the adapter manually. This method of setting up the Adapter is intended for Advanced Users only.

The setup for each option is described, step by step, under the appropriate heading on the following pages.

Click **Exit** to close the Setup Wizard and set up the Adapter later.

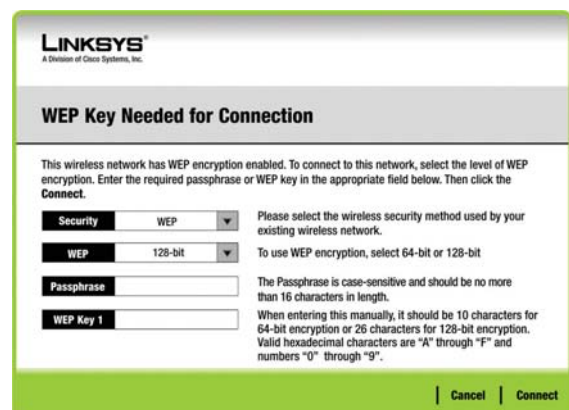
## Available Wireless Networks

The available networks are listed in the table on the center of the screen by Wireless Network Name. Select the wireless network you wish to connect to and **click Connect**. (If you do not see your network listed, you can click Refresh to bring the list up again.) If the network utilizes wireless security, you will need to configure security on the Adapter. If not, you will be taken directly to the Congratulations screen.

1. If you have wireless security enabled on your network, continue to step 2. If you don't have wireless security enabled, continue to step 3.
2. If your network has WEP, WPA Personal, or WPA2 Personal wireless security enabled, then that security screen appears. Continue to the screen for your wireless security.

## WEP (Wired Equivalent Privacy)

If you have WEP enabled, this screen appears. Select 64-bit or 128-bit. Then enter a passphrase or WEP key.



WEP Security

**Passphrase** Enter a passphrase in the Passphrase field, so a WEP key is automatically generated. The passphrase is case-sensitive and must be 16 or fewer alphanumeric characters. It must match the passphrase of your other wireless network devices and is compatible with Linksys wireless products only. (For non-Linksys wireless products, enter the WEP key manually.)

**WEP Key** The WEP key must match the WEP key of your wireless network. For 64-bit encryption, enter exactly 10 hexadecimal characters ("0" to "9" and "A" to "F"). For 128-bit encryption, enter exactly 26 hexadecimal characters.

Click **Connect** and proceed to Step 3.

### WPA Personal (Wi-Fi Protected Access)

If your network has the wireless security WPA Personal enabled, this screen appears.

WPA Personal Security

**Encryption** Select the type of algorithm you want to use, TKIP or AES, from the Encryption drop-down menu.

**Pre-shared Key** Enter a Pre-shared Key of 8-63 characters in the Pre-shared Key field.

Click Connect and proceed to Step 3.

### WPA2 Personal (Wi-Fi Protected Access 2)

If your network has the wireless security WPA2 Personal enabled, this screen appears.

WPA2 Security

Pre-shared Key - Enter a Pre-shared Key of 8-63 characters in the Pre-shared Key field.

Click **Connect** and proceed to Step 3.

- After the profile installs, the *Congratulations* screen appears. Click **Connect to Network** to implement the new settings immediately and return to the *Link Information* screen. Click **Return to Profiles screen** to keep the current settings active and return to the *Profiles* screen.



Congratulations

Congratulations! The profile is successfully configured.

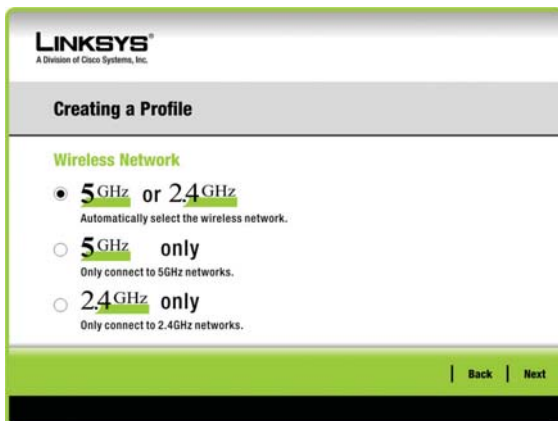
### Advanced Setup

If your network is not listed with the available networks, you can use Advanced Setup.

Wireless Network Name	GHz	CH	Signal	Security
linksys	5	11	100%	Disabled
linksys	2.4	11	100%	WPA2-Personal
linksys	5	11	100%	WEP (64-bit)
linksys	2.4	11	100%	WPA-Personal

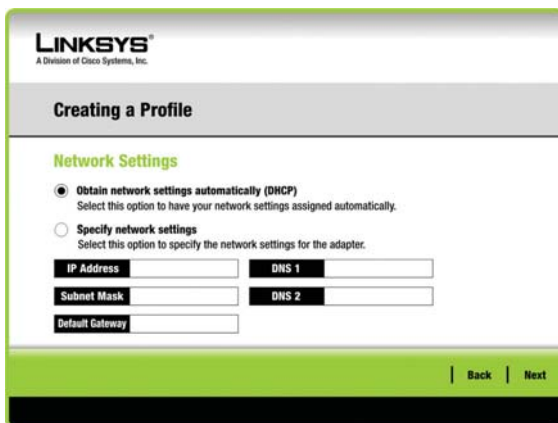
Available Wireless Networks

- Click **Advanced Setup** on the Available Wireless Networks screen to set up the adapter manually.
- The Wireless Network Monitor's *Wireless Network* screen appears. Choose a network mode. Select **5GHz + 2.4GHz** to connect to both 802.11a and 802.11n networks. Select **5GHz** to connect only to 802.11a networks. Select **2.4GHz** to connect only to 802.11n or 802.11g networks.



Wireless Network

3. The *Network Settings* screen appears.



If your network has a router or other DHCP server, select **Obtain network settings automatically (DHCP)**.

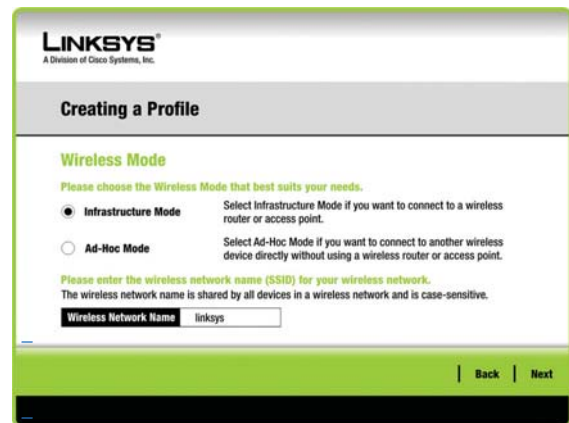
If your network does not have a DHCP server or router, select **Specify network settings**. Enter an IP Address, Subnet Mask, Default Gateway, and DNS addresses appropriate for your network. You must specify the IP Address and Subnet Mask on this screen. If you are unsure about the Default Gateway and DNS addresses, leave these fields empty.

- **IP Address** This IP Address must be unique to your network.
- **Subnet Mask** The Adapter's Subnet Mask must be the same as your wired network's Subnet Mask.
- **Default Gateway** Enter the IP address of your network's Gateway here.
- **DNS 1 and DNS 2** Enter the DNS address of your wired Ethernet network here.

Click **Next** to continue, or click the **Back** button to return to the previous screen.

4. The *Wireless Mode* screen shows a choice of two wireless modes. Select **Infrastructure Mode** if you want to connect to a wireless router or access point.

Select **Ad-Hoc Mode** if you want to connect to another wireless device directly without using a wireless router or access point. Enter the Wireless Network Name for your network.



Wireless Mode

- **Infrastructure Mode** Use this mode if you want to connect to a wireless router or access point.

**Ad-Hoc Mode** Use this mode if you want to connect to another wireless device directly without using a wireless router or access point.

**Wireless Network Name** This is the wireless network name (SSID) that must be used for all the devices in your wireless network. It is case-sensitive and should be a unique name to help prevent others from entering your network.

Click **Next** to continue, or click **Back** to return to the previous screen.

6.

If your wireless network has wireless security, select the method of security used: WEP, WPA Personal, WPA2 Personal, WPA2 Enterprise, WPA Enterprise, WPA2 Enterprise, or RADIUS. WEP stands for Wired Equivalent Privacy, and WPA stands for Wi-Fi Protected Access. WPA2 stands for Wi-Fi Protected Access 2. WPA is a stronger security method than WEP. WPA2 is a stronger security method than WPA. RADIUS stands for Remote Authentication Dial-In User Service. Click **Next** to continue or the **Back** button to return to the previous screen.

Proceed to the section for your security method.

## WEP

The screenshot shows the 'Creating a Profile' screen for WEP. It includes the following fields and options:

- WEP:** Disabled (dropdown menu)
- Passphrase:** Text input field
- WEP Key:** Text input field
- For Advanced Users:**
  - TX Key:** 1 (dropdown menu)
  - Authentication:** Auto (dropdown menu)

Help text on the screen: 'To use WEP encryption, select either 64-bit or 128-bit encryption.' 'The Passphrase is case-sensitive and should be no more than 16 characters in length.' 'When entering this manually, it should be 10 characters for 64-bit encryption or 26 characters for 128-bit encryption. Valid hexadecimal characters are "A" through "F" and numbers "0" through "9".'

WEP

**WEP** Select 64-bit or 128-bit encryption.

**Passphrase** Enter a passphrase in the Passphrase field, so a WEP key is automatically generated. It is case-sensitive and should not be longer than 16 alphanumeric characters. This passphrase must match the passphrase of your other wireless network devices and is compatible with Linksys wireless products only. (If you have any non-Linksys wireless products, enter the WEP key manually on those products.)

**WEP Key** The WEP key you enter must match the WEP key of your wireless network. For 64-bit encryption, enter exactly 10 hexadecimal characters. For 128-bit encryption, enter exactly 26 hexadecimal characters. Valid hexadecimal characters are "0" to "9" and "A" to "F".

## Advanced Users

**TX Key** The default transmit key number is 1. If your network's access point or wireless router uses transmit key number 2, 3, or 4, select the appropriate number from the TX Key drop-down box.

**Authentication** The default is set to Auto, so it will auto-detect for Shared Key or Open System authentication. For Shared Key authentication, both the sender and the recipient share a WEP key for authentication. For Open System authentication, the sender and the recipient do not share a WEP key for authentication. If you are not sure which authentication method to select, keep the default, Auto.

Click **Next** to continue, or click **Back** to return to the previous screen.

## WPA Personal

WPA Personal offers two encryption methods, TKIP and AES, with dynamic encryption keys. Select **TKIP** or **AES** for encryption. Then enter a Pre-shared Key that is 8-63 characters in length.

The screenshot shows the 'Creating a Profile' screen for WPA Personal. It includes the following fields and options:

- Encryption:** TKIP (dropdown menu)
- Pre-shared Key:** Text input field

Help text on the screen: 'Please select the encryption type used to protect your wireless data transmissions.' 'Please enter a Pre-shared Key that is 8 to 63 characters in length.'

WPA Personal

**Encryption** Select the type of algorithm you want to use, TKIP or AES, from the Encryption drop-down menu.

**Pre-shared Key** Enter a Pre-shared Key of 8-63 characters in the Pre-shared Key field.

Click **Next** to continue or **Back** to return to the previous screen.

## WPA2 Personal

Enter a Pre-shared Key that is 8-63 characters.

WPA2 Personal

**Pre-shared Key** Enter a Pre-shared Key of 8-63 characters in the Pre-shared Key field.

Click **Next** to continue or **Back** to return to the previous screen.

## WPA Enterprise

WPA Enterprise features WPA security used in coordination with a RADIUS server. (This should only be used when a RADIUS server is connected to the Router.) WPA Enterprise offers two authentication methods, EAP-TLS and PEAP, as well as two encryption methods, TKIP and AES, with dynamic encryption keys.

**Authentication** Select the authentication method your network is using, **EAP-TLS** or **PEAP**.

EAP-TLS

WPA Enterprise - EAP-TLS

If you selected EAP-TLS, enter the login name of your wireless network in the *Login Name* field. Enter the name of the authentication server in the *Server Name* field (this is optional). From the Certificate drop-down menu, select

the certificate you installed to authenticate you on your wireless network. Select the type of encryption, **TKIP** or **AES**, from the Encryption drop-down menu.

Click **Next** to continue or **Back** to return to the previous screen.

PEAP

WPA Enterprise - PEAP

If you selected PEAP, enter the login name of your wireless network in the *Login Name* field. Enter the password of your wireless network in the *Password* field. Enter the name of the authentication server in the *Server Name* field (this is optional). From the Certificate drop-down menu, select the certificate you have installed to authenticate you on your wireless network; if you want to use any certificate, keep the default setting, Trust Any. Then select the authentication method used inside the PEAP tunnel. Select the type of encryption, **TKIP** or **AES**, from the Encryption drop-down menu.

Click **Next** to continue or **Back** to return to the previous screen.

## WPA2 Enterprise

WPA2 Enterprise features WPA2 security used in coordination with a RADIUS server. (This should only be used when a RADIUS server is connected to the Router.) WPA2 Enterprise offers two authentication methods, EAP-TLS and PEAP.

**Authentication** Select the authentication method your network is using, **EAP-TLS** or

EAP-TLS

If you selected EAP-TLS, enter the login name of your wireless network in the *Login Name* field. Enter the name of the authentication server in the *Server Name* field (this is optional). From the Certificate drop-down menu, select the certificate you have installed to authenticate you on your wireless network.

WPA Enterprise - EAP-TLS

Click **Next** to continue or **Back** to return to the previous screen.

### PEAP

WPA2 Enterprise - PEAP

If you selected PEAP, enter the login name of your wireless network in the *Login Name* field. Enter the password of your wireless network in the *Password* field. Enter the name of the authentication server in the *Server Name* field (this is optional). From the Certificate drop-down menu, select the certificate you have installed to authenticate you on your wireless network; if you want to use any certificate, keep the default setting, Trust Any. Then select the authentication method used inside the PEAP tunnel.

Click **Next** to continue or **Back** to return to the previous screen.

### RADIUS

RADIUS features use of a RADIUS server. (This should only be used when a RADIUS server is connected to the Router.) RADIUS offers two authentication types: EAP-TLS and PEAP.

Authentication - Select the authentication method your network is using, **EAP-TLS** or **PEAP**.

### EAP-TLS

RADIUS - EAP-TLS

If you selected EAP-TLS, enter the login name of your wireless network in the Login Name field. Enter the name of the authentication server in the Server Name field (this is optional). From the Certificate drop-down menu, select the certificate you have installed to authenticate you on your wireless network.

Click **Next** to continue or **Back** to return to the previous screen.

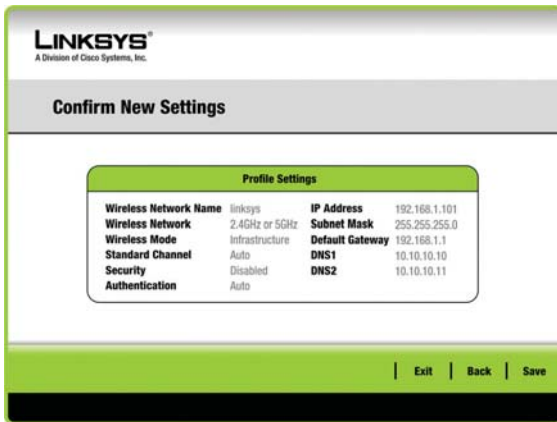
### PEAP

RADIUS - PEAP

If you selected PEAP, enter the login name of your wireless network in the *Login Name* field. Enter the password of your wireless network in the *Password* field. Enter the name of the authentication server in the *Server Name* field (this is optional). From the Certificate drop-down menu, select the certificate you have installed to authenticate you on your wireless network; if you want to use any certificate, keep the default setting, Trust Any. Then select the authentication method used inside the PEAP tunnel.

Click **Next** to continue or **Back** to return to the previous screen.

- The Confirm New Settings screen appears next and shows the new settings.



Confirm New Settings

To save the new settings, click **Save**. To edit the new settings, click **Back**. To exit the Advanced Setup through the Wireless Network Monitor, click **Exit**.

- The Congratulations screen appears next. Click **Finish**.



Congratulations!

Congratulations! The profile is successfully configured.

## Appendix A: Troubleshooting

---

***My computer does not recognize the Dual Band Wireless-N Notebook Adapter.***

Make sure that the Dual Band Wireless-N Notebook Adapter is properly inserted into the PC Card slot.

***The Dual Band Wireless-N Notebook Adapter does not work properly.***

Reinsert the Dual Band Wireless-N Notebook Adapter into the notebook's PC Card slot.

***I cannot communicate with the other computers linked via Ethernet in the Infrastructure configuration.***

1. Make sure that the notebook or desktop is powered on.
2. Make sure that the Dual Band Wireless-N Notebook Adapter is configured with the same Wireless Network Name (SSID) and WEP settings as the other computers in the Infrastructure configuration.



---

**WEB:** If your questions are not addressed here, refer to the Linksys website, [www.linksys.com](http://www.linksys.com)

---



## Appendix B: Specifications

Standards	IEEE 802.11b, IEEE 802.11g, IEEE 802.11a, Draft IEEE 802.11n
LEDs	Power, Link/Act
# of Antennas	3 Antennas
Detachable (y/n)	No
Modulations	802.11a: OFDM 802.11b: CCK, QPSK, BPSK 802.11g: OFDM Wireless-N: BPSK, QPSK, 16-QAM, 64-QAM
RF Pwr in dBm	802.11b: 18.07dBm 802.11g: 21.52dBm 802.11a: 18.06dBm 802.11n: 19.12dBm @ 5GHz 802.11n: 22.10dBm @ 2.4GHz
Receive Sensitivity in dBm	802.11b: -76dBm@10% (Typical) 802.11g: -65dBm@10% (Typical) 802.11a: -65dBm@10% (Typical) 802.11n: -50dBm@10% for 5GHz (Typical) 802.11n: -50dBm@10% for 2.4GHz (Typical)
Antenna Gain in dBi	2.7dBi@2.4GHz, 1.2dBi@5.0GHz
Power Consumption	TX: 620+-10mA RX: 890+-10mA Standby: 580+-10mA
Security features	WEP, WPA Personal, WPA2 Personal, WPA & WPA2 Enterprise
Security key bits	Up to 128-bit encryption
<b>Environmental</b>	
Dimensions	2.24" x 0.39" x 3.98" (57mm x 10mm x 101mm)
Certification	FCC
Unit Weight	1.02 oz (0.029 kg)
Operating Temp.	0°C to 50°C (32°F to 122°F)
Storage Temp.	-20°C to 70°C (-4°F to 158°F)
Operating Humidity	10% to 85% Non-Condensing
Storage Humidity	5% to 90% Non-Condensing

## Appendix C: Windows XP Wireless Zero Configuration

### Windows XP Wireless Zero Configuration

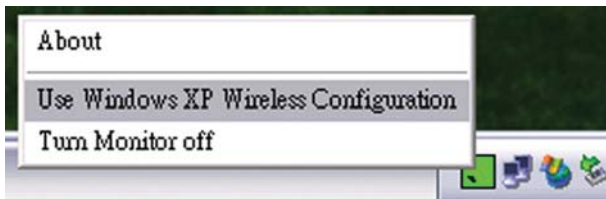
If your computer is running Windows XP, then this choice will be available. If you want to use Windows XP Wireless Zero Configuration to control the Adapter, instead of using the Wireless Network Monitor, then right-click on the Wireless Network Monitor and select .



**NOTE:** If you have WPA2 Wireless Security, refer to Update for Windows XP (KB893357) on the microsoft.com website to be able to connect correctly.

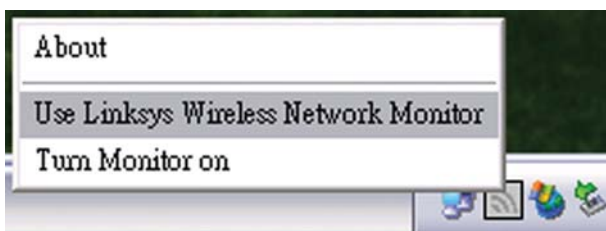


Wireless Network Monitor



Use Windows XP Configuration

If you want to switch back to the Wireless Network Monitor, right-click the Wireless Network Monitor icon, and select **Use Linksys Wireless Network Monitor**.

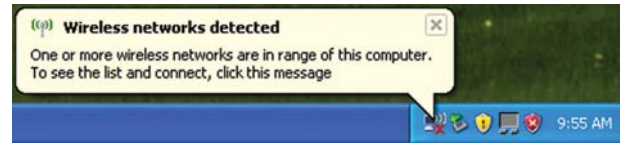


Use Linksys Wireless Network Monitor



**NOTE:** For more information on Windows XP Wireless Zero Configuration, refer to Windows Help.

1. After installing the Adapter, the Windows XP Wireless Zero Configuration icon appears in your computer's system tray. Double-click the icon.



Windows XP Wireless Zero Configuration Icon

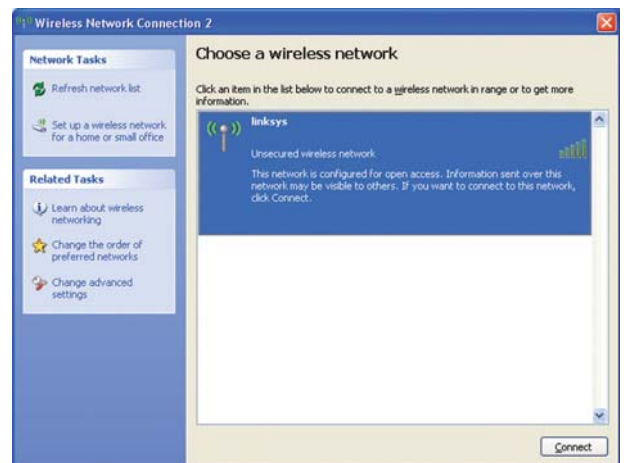
2. The screen that appears will show any available wireless network. Select the network you want. Click **Connect**.

If your network does not have wireless security enabled, go to step 3.

If your network does have wireless security enabled, go to step 4.



**NOTE:** Steps 2 and 3 are for Windows XP with Service Pack 2 installed.



Available Wireless Network

3. If your network does not have wireless security enabled, click **Connect Anyway** to connect the Adapter to your network.



No Wireless Security

4. If your network uses wireless security WEP, enter the WEP Key used into the *Network Key* and *Confirm network key* fields. If your network uses wireless security WPA Personal, enter the Passphrase used into the *Network Key* and *Confirm network key* fields. Click **Connect**.

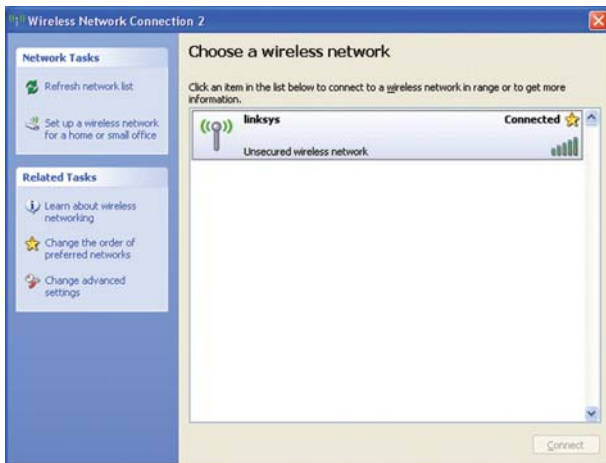


Wireless Security



**NOTE:** Windows XP Wireless Zero Configuration does not support the use of a passprase. Enter the exact WEP key used by your access point.

5. Your wireless network will appear as Connected when your connection is active.



Wireless Network Connection

For more information about wireless networking on a Windows XP computer, click **Start>Help>Support**. Enter the keyword **wireless** in the field provided, and press the **Enter** key.

The installation of the Windows XP Wireless Configuration is complete.

## Appendix D: Warranty and Regulatory Information

### Limited Warranty

Linksys warrants to You that, for a period of one year (the "Warranty Period"), your Linksys Product will be substantially free of defects in materials and workmanship under normal use. Your exclusive remedy and Linksys' entire liability under this warranty will be for Linksys at its option to repair or replace the Product or refund Your purchase price less any rebates. This limited warranty extends only to the original purchaser.

If the Product proves defective during the Warranty Period call Linksys Technical Support in order to obtain a Return Authorization Number, if applicable. BE SURE TO HAVE YOUR PROOF OF PURCHASE ON HAND WHEN CALLING. If You are requested to return the Product, mark the Return Authorization Number clearly on the outside of the package and include a copy of your original proof of purchase. RETURN REQUESTS CANNOT BE PROCESSED WITHOUT PROOF OF PURCHASE. You are responsible for shipping defective Products to Linksys. Linksys pays for UPS Ground shipping from Linksys back to You only. Customers located outside of the United States of America and Canada are responsible for all shipping and handling charges.

ALL IMPLIED WARRANTIES AND CONDITIONS OF MERCHANTABILITY OR FITNESS FOR A PARTICULAR PURPOSE ARE LIMITED TO THE DURATION OF THE WARRANTY PERIOD. ALL OTHER EXPRESS OR IMPLIED CONDITIONS, REPRESENTATIONS AND WARRANTIES, INCLUDING ANY IMPLIED WARRANTY OF NON-INFRINGEMENT, ARE DISCLAIMED. Some jurisdictions do not allow limitations on how long an implied warranty lasts, so the above limitation may not apply to You. This warranty gives You specific legal rights, and You may also have other rights which vary by jurisdiction.

This warranty does not apply if the Product (a) has been altered, except by Linksys, (b) has not been installed, operated, repaired, or maintained in accordance with instructions supplied by Linksys, or (c) has been subjected to abnormal physical or electrical stress, misuse, negligence, or accident. In addition, due to the continual development of new techniques for intruding upon and attacking networks, Linksys does not warrant that the Product will be free of vulnerability to intrusion or attack.

TO THE EXTENT NOT PROHIBITED BY LAW, IN NO EVENT WILL LINKSYS BE LIABLE FOR ANY LOST DATA, REVENUE OR PROFIT, OR FOR SPECIAL, INDIRECT, CONSEQUENTIAL, INCIDENTAL OR PUNITIVE DAMAGES, REGARDLESS OF THE THEORY OF LIABILITY (INCLUDING NEGLIGENCE), ARISING OUT OF OR RELATED TO THE USE OF OR INABILITY TO USE THE PRODUCT (INCLUDING ANY SOFTWARE), EVEN IF LINKSYS HAS BEEN ADVISED OF THE POSSIBILITY OF SUCH DAMAGES. IN NO EVENT WILL LINKSYS' LIABILITY EXCEED THE AMOUNT PAID BY YOU FOR THE PRODUCT. The foregoing limitations will apply even if any warranty or remedy provided under this Agreement fails of its essential purpose. Some jurisdictions do not allow the exclusion or limitation of incidental or consequential damages, so the above limitation or exclusion may not apply to You.

Please direct all inquiries to: Linksys, P.O. Box 18558, Irvine, CA 92623.

### FCC Statement

This device complies with Part 15 of the FCC Rules. Operation is subject to the following two conditions: (1) This device may not cause harmful interference, and (2) this device must accept any interference received, including interference that may cause undesired operation.

This product has been tested and complies with the specifications for a Class B digital device, pursuant to Part 15 of the FCC Rules. These limits are designed to provide reasonable protection against harmful interference in a residential installation. This equipment generates, uses, and can radiate radio frequency energy and, if not installed and used according to the instructions, may cause harmful interference to radio communications. However, there is no guarantee that interference will not occur in a particular installation. If this equipment does cause harmful interference to radio or television reception, which is found by turning the equipment off and on, the user is encouraged to try to correct the interference by one or more of the following measures:

- Reorient or relocate the receiving antenna
- Increase the separation between the equipment or devices
- Connect the equipment to an outlet other than the receiver's
- Consult a dealer or an experienced radio/TV technician for assistance

FCC Caution: Any changes or modifications not expressly approved by the party responsible for compliance could void the user's authority to operate this equipment.

This device complies with Part 15 of the FCC Rules. Operation is subject to the following two conditions: (1) This device may not cause harmful interference, and (2) this device must accept any interference received, including interference that may cause undesired operation.

For operation within 5.15 ~ 5.25GHz frequency <sup>17</sup> range, it is restricted to indoor environment.

IEEE 802.11b or 802.11g operation of this product in the U.S.A. is firmware-limited to channels 1 through 11.

This equipment has been SAR-evaluated for use in notebooks with side slot configuration.

## FCC Radiation Exposure Statement

This equipment complies with FCC radiation exposure limits set forth for an uncontrolled environment. End users must follow the specific operating instructions for satisfying RF exposure compliance.

This transmitter must not be co-located or operating in conjunction with any other antenna or transmitter.

## Industry Canada Statement

Operation is subject to the following two conditions:

This device may not cause interference.

This device must accept any interference, including interference that may cause undesired operation of the

## Declaration d'Industrie Canada

Le fonctionnement est soumis aux conditions suivantes:

Ce peripherique ne doit pas causer d'interferences

Ce peripherique doit accepter toutes les interferences recues, y compris celles qui risquent d'entraîner un fonctionnement indésirable.

## Industry Canada Radiation Exposure Statement:

This equipment complies with Canada radiation exposure limits set forth for uncontrolled environments. This transmitter must not be co-located or operating in conjunction with any other antenna or transmitter.

Avis d'Industrie Canada concernant l'exposition aux radiofréquences :

Ce matériel est conforme aux limites établies par IC en matière d'exposition aux radiofréquences dans un environnement non contrôlé. L'émetteur ne doit pas être placé près d'une autre antenne ou d'un autre émetteur, ou fonctionner avec une autre antenne ou un autre émetteur.

The WPC600N has disabled the 5600-5650M band by S/W to avoid 5600-5650M band for IC certification.

IC statement

(i) the device for the band 5150-5250 MHz is only for indoor usage to reduce potential for harmful interference to co-channel mobile satellite systems;

(ii) the maximum antenna gain 1.2 dBi permitted (for devices in the bands 5250-5350 MHz and 5470-5725 MHz) to comply with the e.i.r.p. limit; and

(iii) the maximum antenna gain 1.2 dBi permitted (for devices in the band 5725-5825 MHz) to comply with the e.i.r.p. limits specified for point-to-point and non point-to-point operation as appropriate, as stated in section A9.2(3)

In addition, users should also be cautioned to take note that high-power radars are allocated as primary users (meaning they have priority) of the bands 5250-5350 MHz and 5650-5850 MHz and these radars could cause interference and/or damage to LE-LAN devices.

Dual Band Wireless-N Notebook Adapter

## Safety Notices

Caution: To reduce the risk of fire, use only No.26 AWG or larger telecommunication line cord.

Do not use this product near water, for example, in a wet basement or near a swimming pool.

Avoid using this product during an electrical storm. There may be a remote risk of electric shock from lightning.



**WARNING:** This product contains lead, known to the State of California to cause cancer, and birth defects or other reproductive harm. Wash hands after handling.

## Wireless Disclaimer

The maximum performance for wireless is derived from IEEE Standard 802.11 specifications. Actual performance can vary, including lower wireless network capacity, data throughput rate, range and coverage. Performance depends on many factors, conditions and variables, including distance from the access point, volume of network traffic, building materials and construction, operating system used, mix of wireless products used, interference and other adverse conditions.

## Avis de non-responsabilité concernant les appareils sans fil


Les performances maximales pour les réseaux sans fil sont tirées des spécifications de la norme IEEE 802.11. Les performances réelles peuvent varier, notamment en fonction de la capacité du réseau sans fil, du débit de la transmission de données, de la portée et de la couverture. Les performances dépendent de facteurs, conditions et variables multiples, en particulier de la distance par rapport au point d'accès, du volume du trafic réseau, des matériaux utilisés dans le bâtiment et du type de construction, du système d'exploitation et de la combinaison de produits sans fil utilisés, des interférences et de toute autre condition défavorable.

## User Information for Consumer Products Covered by EU Directive 2002/96/EC on Waste Electric and Electronic Equipment (WEEE)


This document contains important information for users with regards to the proper disposal and recycling of Linksys products. Consumers are required to comply with this notice for all electronic products bearing the following symbol:




### English - Environmental Information for Customers in the European Union

European Directive 2002/96/EC requires that the equipment bearing this symbol  on the product and/or its packaging must not be disposed of with unsorted municipal waste. The symbol indicates that this product should be disposed of separately from regular household waste streams. It is your responsibility to dispose of this and other electric and electronic equipment via designated collection facilities appointed by the government or local authorities. Correct disposal and recycling will help prevent potential negative consequences to the environment and human health. For more detailed information about the disposal of your old equipment, please contact your local authorities, waste disposal service, or the shop where you purchased the product.


### Български (Bulgarian) - Информация относно опазването на околната среда за потребители в Европейския съюз

Европейска директива 2002/96/ЕС изисква уредите, носещи този символ  върху изделието и/или опаковката му, да не се изхвърлят с несортирани битови отпадъци. Символът обозначава, че изделието трябва да се изхвърля отделно от сметосъбирането на обикновените битови отпадъци. Вашата отговорност е тази и другите електрически и електронни уреди да се изхвърлят в предварително определени от държавните или общински органи специализирани пунктове за събиране. Правилното изхвърляне и рециклиране ще спомогнат да се предотвратят евентуални вредни за околната среда и здравето на населението последици. За по-подробна информация относно изхвърлянето на вашите стари уреди се обърнете към местните власти, службите за сметосъбиране или магазина, от който сте закупили уреда.


### Čeština (Czech) - Informace o ochraně životního prostředí pro zákazníky v zemích Evropské unie

Evropská směrnice 2002/96/ES zakazuje, aby zařízení označené tímto symbolem  na produktu anebo na obalu bylo likvidováno s netříděným komunálním odpadem. Tento symbol udává, že daný produkt musí být likvidován odděleně od běžného komunálního odpadu. Odpovídáte za likvidaci tohoto produktu a dalších elektrických a elektronických zařízení prostřednictvím určených sběrných míst stanovených vládou nebo místními úřady. Správná likvidace a recyklace pomáhá předcházet potenciálním negativním dopadům na životní prostředí a lidské zdraví. Podrobnější informace o likvidaci starého vybavení si laskavě vyžádejte od místních úřadů, podniku zabývajícího se likvidací komunálních odpadů nebo obchodu, kde jste produkt zakoupili.


### Dansk (Danish) - Miljøinformation for kunder i EU

EU-direktiv 2002/96/EF kræver, at udstyr der bærer dette symbol  på produktet og/eller emballagen ikke må bortskaffes som usorteret kommunalt affald. Symbolet betyder, at dette produkt skal bortskaffes adskilt fra det almindelige husholdningsaffald. Det er dit ansvar at bortskaffe dette og andet elektrisk og elektronisk udstyr via bestemte indsamlingssteder udpeget af staten eller de lokale myndigheder. Korrekt bortskaffelse og genvinding vil hjælpe med til at undgå mulige skader for miljøet og menneskers sundhed. Kontakt venligst de lokale myndigheder, renovationstjenesten eller den butik, hvor du har købt produktet, angående mere detaljeret information om bortskaffelse af dit gamle udstyr.


### Deutsch (German) - Umweltinformation für Kunden innerhalb der Europäischen Union

Die Europäische Richtlinie 2002/96/EC verlangt, dass technische Ausrüstung, die direkt am Gerät und/oder an der Verpackung mit diesem Symbol versehen ist , nicht zusammen mit unsortiertem Gemeindeabfall entsorgt werden darf. Das Symbol weist darauf hin, dass das Produkt von regulärem Haushaltsmüll getrennt entsorgt werden sollte. Es liegt in Ihrer Verantwortung, dieses Gerät und andere elektrische und elektronische Geräte über die dafür zuständigen und von der Regierung oder örtlichen Behörden dazu bestimmten Sammelstellen zu entsorgen. Ordnungsgemäßes Entsorgen und Recyceln trägt dazu bei, potentielle negative Folgen für Umwelt und die menschliche Gesundheit zu vermeiden. Wenn Sie weitere Informationen zur Entsorgung Ihrer Altgeräte benötigen, wenden Sie sich bitte an die örtlichen Behörden oder städtischen Entsorgungsdienste oder an den Händler, bei dem Sie das Produkt erworben haben.


### Eesti (Estonian) - Keskkonnaalane informatsioon Euroopa Liidus asuvatele klientidele

Euroopa Liidu direktiivi 2002/96/EÜ nõuete kohaselt on seadmeid, millel on tootel või pakendil käesolev sümbol , keelatud kõrvaldada koos sorteerimata olmejäätmetega. See sümbol näitab, et toode tuleks kõrvaldada eraldi tavalistest olmejäätmevoogudest. Olete kohustatud kõrvaldama käesoleva ja ka muud elektri- ja elektroonikaseadmed riigi või kohalike ametiasutuste poolt ette nähtud kogumispunktide kaudu. Seadmete korrektne kõrvaldamine ja ringlussevõtt aitab vältida võimalikke negatiivseid tagajärgi keskkonnale ning inimeste tervisele. Vanade seadmete kõrvaldamise kohta täpsema informatsiooni saamiseks võtke palun ühendust kohalike ametiasutustega, jäätmekäitlusfirmaga või kauplusega, kust te toote ostsite.


### Español (Spanish) - Información medioambiental para clientes de la Unión Europea

La Directiva 2002/96/CE de la UE exige que los equipos que lleven este símbolo , en el propio aparato y/o en su embalaje no deben eliminarse junto con otros residuos urbanos no seleccionados. El símbolo indica que el producto en cuestión debe separarse de los residuos domésticos convencionales con vistas a su eliminación. Es responsabilidad suya desechar este y cualesquiera otros aparatos eléctricos y electrónicos a través de los puntos de recogida que ponen a su disposición el gobierno y las autoridades locales. Al desechar y reciclar correctamente estos aparatos estará contribuyendo a evitar posibles consecuencias negativas para el medio ambiente y la salud de las personas. Si desea obtener información más detallada sobre la eliminación segura de su aparato usado, consulte a las autoridades locales, al servicio de recogida y eliminación de residuos de su zona o pregunte en la tienda donde adquirió el producto.


### Ελληνικά (Greek) - Στοιχεία περιβαλλοντικής προστασίας για πελάτες εντός της Ευρωπαϊκής Ένωσης

Η Κοινοτική Οδηγία 2002/96/ΕΚ απαιτεί ότι ο εξοπλισμός ο οποίος φέρει αυτό το σύμβολο , στο προϊόν και/ή στη συσκευασία του δεν πρέπει να απορρίπτεται μαζί με τα μικτά κοινωτικά απορρίμματα. Το σύμβολο υποδεικνύει ότι αυτό το προϊόν θα πρέπει να απορρίπτεται ξεχωριστά από τα συνήθη οικιακά απορρίμματα. Είστε υπεύθυνος για την απόρριψη του παρόντος και άλλου ηλεκτρικού και ηλεκτρονικού εξοπλισμού μέσω των καθορισμένων εγκαταστάσεων συγκέντρωσης απορριμμάτων οι οποίες παρέχονται από το κράτος ή τις αρμόδιες τοπικές αρχές. Η σωστή απόρριψη και ανακύκλωση συμβάλλει στην πρόληψη πιθανών αρνητικών συνεπειών για το περιβάλλον και την υγεία. Για περισσότερες πληροφορίες σχετικά με την απόρριψη του παλιού σας εξοπλισμού, παρακαλώ επικοινωνήστε με τις τοπικές αρχές, τις υπηρεσίες απόρριψης ή το κατάστημα από το οποίο αγοράσατε το προϊόν.


### Français (French) - Informations environnementales pour les clients de l'Union européenne

La directive européenne 2002/96/CE exige que l'équipement sur lequel est apposé ce symbole , sur le produit et/ou son emballage ne soit pas jeté avec les autres ordures ménagères. Ce symbole indique que le produit doit être éliminé dans un circuit distinct de celui pour les déchets des ménages. Il est de votre responsabilité de jeter ce matériel ainsi que tout autre matériel électrique ou électronique par les moyens de collecte indiqués par le gouvernement et les pouvoirs publics des collectivités territoriales. L'élimination et le recyclage en bonne et due forme ont pour but de lutter contre l'impact néfaste potentiel de ce type de produits sur l'environnement et la santé publique. Pour plus d'informations sur le mode d'élimination de votre ancien équipement, veuillez prendre contact avec les pouvoirs publics locaux, le service de traitement des déchets, ou l'endroit où vous avez acheté le produit.


### Italiano (Italian) - Informazioni relative all'ambiente per i clienti residenti nell'Unione Europea

La direttiva europea 2002/96/EC richiede che le apparecchiature contrassegnate con questo simbolo , sul prodotto e/o sull'imballaggio non siano smaltite insieme ai rifiuti urbani non differenziati. Il simbolo indica che questo prodotto non deve essere smaltito insieme ai normali rifiuti domestici. È responsabilità del proprietario smaltire sia questi prodotti sia le altre apparecchiature elettriche ed elettroniche mediante le specifiche strutture di raccolta indicate dal governo o dagli enti pubblici locali. Il corretto smaltimento ed il riciclaggio aiuteranno a prevenire conseguenze potenzialmente negative per l'ambiente e per la salute dell'essere umano. Per ricevere informazioni più dettagliate circa lo smaltimento delle vecchie apparecchiature in Vostro possesso, Vi invitiamo a contattare gli enti pubblici di competenza, il servizio di smaltimento rifiuti o il negozio nel quale avete acquistato il prodotto.


### Latviešu valoda (Latvian) - Ekoloģiska informācija klientiem Eiropas Savienības jurisdikcijā

Direktīvā 2002/96/EK ir prasība, ka aprīkojumu, kam pievienota zīme , uz paša izstrādājuma vai uz tā iesaiņojuma, nedrīkst izmest nešķīrotā veidā kopā ar komunālajiem atkritumiem (tiem, ko rada vietēji iedzīvotāji un uzņēmumi). Šī zīme nozīmē to, ka šī ierīce ir jāizmet atkritumos tā, lai tā nenonāktu kopā ar parastiem mājsaimniecības atkritumiem. Jūsu pienākums ir šo un citas elektriskas un elektroniskas ierīces izmest atkritumos, izmantojot īpašus atkritumu savākšanas veidus un līdzekļus, ko nodrošina valsts un pašvaldību iestādes. Ja izmešana atkritumos un pārstrāde tiek veikta pareizi, tad mazinās iespējamais kaitējums dabai un cilvēku veselībai. Sīkākas ziņas par novecojuša aprīkojuma izmešanu atkritumos jūs varat saņemt vietējā pašvaldībā, atkritumu savākšanas dienestā, kā arī veikalā, kur iegādājāties šo izstrādājumu.

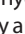
### Lietuvškai (Lithuanian) - Aplinkosaugos informacija, skirta Europos Sąjungos vartotojams

Europos direktyva 2002/96/EC numato, kad įrangos, kuri ir , kurios pakuotė yra pažymėta šiuo simboliu (įveskite simbolį), negalima šalinti kartu su nerūšiuotomis komunalinėmis atliekomis. Šis simbolis rodo, kad gaminį reikia šalinti atskirai nuo bendro buitinių atliekų srauto. Jūs privalote užtikrinti, kad ši ir kita elektros ar elektroninė įranga būtų šalinama per tam tikras nacionalinės ar vietinės valdžios nustatytas atliekų rinkimo sistemas. Tinkamai šalinant ir perdurbant atliekas, bus išvengta galimos žalos aplinkai ir žmonių sveikatai. Daugiau informacijos apie jūsų senos įrangos šalinimą gali pateikti vietinės valdžios institucijos, atliekų šalinimo tarnybos arba parduotuvės, kuriose įsigijote tą gaminį.


### Malti (Maltese) - Informazzjoni Ambjentali għal Kliġenti fl-Unjoni Ewropea

Id-Direttiva Ewropea 2002/96/KE titlob li t-tagħmir li jkun fi h is-simbolu  fuq il-prodott u/jew fuq l-ippakkjar ma jstax jintrema ma' skart municipali li ma għex isseparat. Is-simbolu jindika li dan il-prodott għandu jintrema separatament minn ma' l-iskart domestiku regolari. Hija responsabbiltà tiegħek li tarmi dan it-tagħmir u kull tagħmir ieħor ta' l-elettriku u elettroniku permezz ta' facilitajiet ta' għbir appuntati apposta mill-gvern jew mill-awtoritajiet lokali. Ir-rimi b'mod korrett u r-riċiklaġġ jgħin jipprevjeni konsegwenzi negattivi potenzjali għall-ambjent u għas-saħħa tal-bniedem. Għal aktar informazzjoni dettaljata dwar ir-rimi tat-tagħmir antik tiegħek, jekk jogħġbok ikkuntattja lil-awtoritajiet lokali tiegħek, is-servizzi għar-rimi ta' l-iskart, jew il-ħanut minn fejn xtrajt il-prodott.


### Magyar (Hungarian) - Környezetvédelmi információ az európai uniós vásárlók számára

A 2002/96/EC számú európai uniós irányelv megkívánja, hogy azokat a termékeket, amelyek, és/vagy amelyek csomagolásán az alábbi címke  megjelenik, tilos a többi szelektálatlan lakossági hulladékkal együtt kidobni. A címke azt jelöli, hogy az adott termék kidobásakor a szokványos háztartási hulladékelszállítási rendszerektől elkülönített eljárást kell alkalmazni. Az Ön felelőssége, hogy ezt, és más elektromos és elektronikus berendezéseit a kormányzati vagy a helyi hatóságok által kijelölt gyűjtőrendszeren keresztül számolja fel. A megfelelő hulladékfeldolgozás segít a környezetre és az emberi egészségre potenciálisan ártalmas negatív hatások megelőzésében. Ha elavult berendezéseinek felszámolásához további részletes információra van szüksége, kérjük, lépjen kapcsolatba a helyi hatóságokkal, a hulladékfeldolgozási szolgálattal, vagy azzal üzlettel, ahol a terméket vásárolta.


### Nederlands (Dutch) - Milieu-informatie voor klanten in de Europese Unie

De Europese Richtlijn 2002/96/EC schrijft voor dat apparatuur die is voorzien van dit symbool  op het product of de verpakking, niet mag worden ingezameld met niet-gescheiden huishoudelijk afval. Dit symbool geeft aan dat het product apart moet worden ingezameld. U bent zelf verantwoordelijk voor de vernietiging van deze en andere elektrische en elektronische apparatuur via de daarvoor door de landelijke of plaatselijke overheid aangewezen inzamelingskanalen. De juiste vernietiging en recycling van deze apparatuur voorkomt mogelijke negatieve gevolgen voor het milieu en de gezondheid. Voor meer informatie over het vernietigen van uw oude apparatuur neemt u contact op met de plaatselijke autoriteiten of afvalverwerkingsdienst, of met de winkel waar u het product hebt aangeschaft.

### Norsk (Norwegian) - Miljøinformasjon for kunder i EU


EU-direktiv 2002/96/EF krever at utstyr med følgende symbol  avbildet på produktet og/eller pakningen, ikke må kastes sammen med usortert avfall. Symbolet indikerer at dette produktet skal håndteres atskilt fra ordinær avfallsinnsamling for husholdningsavfall. Det er ditt ansvar å kvitte deg med dette produktet og annet elektrisk og elektronisk avfall via egne innsamlingsordninger slik myndighetene eller kommunene bestemmer. Korrekt avfallshåndtering og gjenvinning vil være med på å forhindre mulige negative konsekvenser for miljø og helse. For nærmere informasjon om håndtering av det kasserte utstyret ditt, kan du ta kontakt med kommunen, en innsamlingsstasjon for avfall eller butikken der du kjøpte produktet.

### Polski (Polish) - Informacja dla klientów w Unii Europejskiej o przepisach dotyczących ochrony środowiska

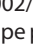
Dyrektywa Europejska 2002/96/EC wymaga, aby sprzęt oznaczony symbolem  znajdującym się na produkcie i/lub jego opakowaniu nie był wyrzucany razem z innymi niesortowanymi odpadami komunalnymi. Symbol ten wskazuje, że produkt nie powinien być usuwany razem ze zwykłymi odpadami z gospodarstw domowych. Na Państwu spoczywa obowiązek wyrzucania tego i innych urządzeń elektrycznych oraz elektronicznych w punktach odbioru wyznaczonych przez władze krajowe lub lokalne. Pozbywanie się sprzętu we właściwy sposób i jego recykling pomogą zapobiec potencjalnie negatywnym konsekwencjom dla środowiska i zdrowia ludzkiego. W celu uzyskania szczegółowych informacji o usuwaniu starego sprzętu, prosimy zwrócić się do lokalnych władz, służb oczyszczania miasta lub sklepu, w którym produkt został nabyty.



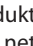
### Português (Portuguese) - Informação ambiental para clientes da União Europeia

A Directiva Europeia 2002/96/CE exige que o equipamento que exibe este símbolo  no produto e/ou na sua embalagem não seja eliminado junto com os resíduos municipais não separados. O símbolo indica que este produto deve ser eliminado separadamente dos resíduos domésticos regulares. É da sua responsabilidade eliminar este e qualquer outro equipamento eléctrico e electrónico através das instalações de recolha designadas pelas autoridades governamentais ou locais. A eliminação e reciclagem correctas ajudarão a prevenir as consequências negativas para o ambiente e para a saúde humana. Para obter informações mais detalhadas sobre a forma de eliminar o seu equipamento antigo, contacte as autoridades locais, os serviços de eliminação de resíduos ou o estabelecimento comercial onde adquiriu o produto.

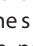
### Română (Romanian) - Informații de mediu pentru clienții din Uniunea Europeană

Directiva europeană 2002/96/CE impune ca echipamentele care prezintă acest simbol  pe produs și/sau pe ambalajul acestuia să nu fie casate împreună cu gunoiul menajer municipal. Simbolul indică faptul că acest produs trebuie să fie casat separat de gunoiul menajer obișnuit. Este responsabilitatea dvs. să cașati acest produs și alte echipamente electrice și electronice prin intermediul unităților de colectare special desemnate de guvern sau de autoritățile locale. Casarea și reciclarea corecte vor ajuta la prevenirea potențialelor consecințe negative asupra sănătății mediului și a oamenilor. Pentru mai multe informații detaliate cu privire la casarea acestui echipament vechi, contactați autoritățile locale, serviciul de salubritate sau magazinul de la care ați achiziționat produsul.


### Slovenčina (Slovak) - Informácie o ochrane životného prostredia pre zákazníkov v Európskej únii

Podľa európskej smernice 2002/96/ES zariadenie s týmto symbolom  na produkte a/alebo jeho balení nesmie byť likvidované spolu s netriedeným komunálnym odpadom. Symbol znamená, že produkt by sa mal likvidovať oddelene od bežného odpadu z domácností. Je vašou povinnosťou likvidovať toto i ostatné elektrické a elektronické zariadenia prostredníctvom špecializovaných zberných zariadení určených vládou alebo miestnymi orgánmi. Správna likvidácia a recyklácia pomôže zabrániť prípadným negatívnym dopadom na životné prostredie a zdravie ľudí. Ak máte záujem o podrobnejšie informácie o likvidácii starého zariadenia, obráťte sa, prosím, na miestne orgány, organizácie zaoberajúce sa likvidáciou odpadov alebo obchod, v ktorom ste si produkt zakúpili.

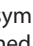
### Slovenčina (Slovene) - Okoljske informacije za stranke v Evropski uniji

Evropska direktiva 2002/96/EC prepoveduje odlaganje opreme, označene s tem simbolom  – na izdelku in/ali na embalaži – med običajne, nerazvrščene odpadke. Ta simbol opozarja, da je treba izdelek odvreči ločeno od preostalih gospodinjskih odpadkov. Vaša odgovornost je, da to in preostalo električno in elektronsko opremo odnesete na posebna zbirališča, ki jih določijo državne ustanove ali lokalna uprava. S pravilnim odlaganjem in recikliranjem boste preprečili morebitne škodljive vplive na okolje in zdravje ljudi. Če želite izvedeti več o odlaganju stare opreme, se obrnite na lokalno upravo, odpad ali trgovino, kjer ste izdelek kupili.

### Suomi (Finnish) - Ympäristöä koskevia tietoja EU-alueen asiakkaille

EU-direktiivi 2002/96/EY edellyttää, että jos laitteistossa on tämä symboli  itse tuotteessa ja/tai sen pakkauksessa, laitteistoa ei saa hävittää lajittelemattoman yhdyskuntajätteen mukana. Symboli merkitsee sitä, että tämä tuote on hävitettävä erillään tavallisesta kotitalousjätteestä. Sinun vastuullasi on hävittää tämä elektroniikkatuote ja muut vastaavat elektroniikkatuotteet viemällä tuote tai tuotteet viranomaisten määräämään keräyspisteeseen. Laitteiston oikea hävittäminen estää mahdolliset kielteiset vaikutukset ympäristöön ja ihmisten terveyteen. Lisätietoja vanhan laitteiston oikeasta hävitystavasta saa paikallisilta viranomaisilta, jätteenhävityspalvelusta tai siitä myymälästä, josta ostit tuotteen.

### Svenska (Swedish) - Miljöinformation för kunder i Europeiska unionen

Det europeiska direktivet 2002/96/EC kräver att utrustning med denna symbol  på produkten och/eller förpackningen inte får kastas med sorterat kommunalt avfall. Symbolen visar att denna produkt bör kastas efter att den avskiljts från vanligt hushållsavfall. Det faller på ditt ansvar att kasta denna och annan elektrisk och elektronisk utrustning på fastställda samlingsplatser utsedda av regeringen eller lokala myndigheter. Korrekt kassering och återvinning skyddar mot eventuella negativa konsekvenser för miljön och personhälsa. För mer detaljerad information om kassering av din gamla utrustning kontaktar du dina lokala myndigheter, avfallshanteringen eller butiken där du köpte produkten.



**WEB:** For additional information, please visit [www.linksys.com](http://www.linksys.com)