

**Log in as the Access Point's administrator:**

Enter the Access Point's administrative account and password and retype the password in the confirm field (default account name is *admin* and password is *admin*). Click **Next** to continue to the administrative options.

**Access Point Account**

This will let you modify your Access Point's username and password.



**Figure 5-41: Administration - Login Access Point Account**



**Figure 5-42: Administration - Modify Access Point Account**

## Security Monitor Account

The *Security Monitor Account* screen provides you with the function to create and modify your Security Monitor account. The Security Monitor account gives access to the administrative functions of the Wireless Network Monitor.

Please enter the administrator's **username** and **password** for modifying the Security Monitor account.



The username and password for the Security Monitor administrator account may or may not be the same as the Access Point's administrator account.

Select an account from the drop-down menu to create or modify the username and password. There are a total of five accounts available. Click **Save** to save your existing changes.

## Email Alert

This will let you enter the Access Point's name that will send alert messages via email and the email addresses for receiving instant alert messages.

Figure 5-43: Administration - Security Monitor Account

Figure 5-44: Administration - Email Alert

# Chapter 6: The Administrative Functions in the Wireless Network Monitor

Use the administration functions in the Wireless Network Monitor to classify your wireless networks into different groups and monitor the activities and resources within your networks. The following functions under **Classification** and **Security Monitor** screens are only enabled after an administrator or privileged user enters a valid username and password.

## Accessing the Wireless Network Monitor

After installing the Adapter, the Wireless Network Monitor icon will appear in the system tray of your computer. If the Wireless Network Monitor is enabled, then the icon will be green. If the Wireless Network Monitor is disabled or the Adapter is not connected, then the icon will be gray.

## Using the Administrative Functions in the Wireless Network Monitor

The Administration tab will give you the access to the administrative tasks of the account information and other functions, such as classification and monitoring of your wireless networks. The Classification and Security Monitor function will be provided after login as the Security Monitor account at the Administration screen. To configure the trusted/untrusted wireless networks, click the **Classification** tab. To view the summarized report of the monitored wireless activities and alert messages, click the **Security Monitor**.



Figure 6-1: Wireless Network Monitor Icon



Figure 6-2: Administration - Login Security Monitor Account

## Classification

The *Classification* screen displays a summary of classified networks. The table shows the number of classified clients in your networks. It also shows the number of classified Access Points based on their Vendor, Network's SSID, and Channel. You may uncheck the **Receive classification rules** to disable this station from receiving the network's current classification rules. The default condition is checked, so each station always receives classification rules in synchronization with other stations in the network. You may also click the **Synchronize** button to send out the classification rules to other users within your monitored wireless networks. Click **Next** to configure your trusted networks.



**NOTE:** You will have to log in with a valid Security Monitor account to view this screen and all remaining screens in Chapter 6.

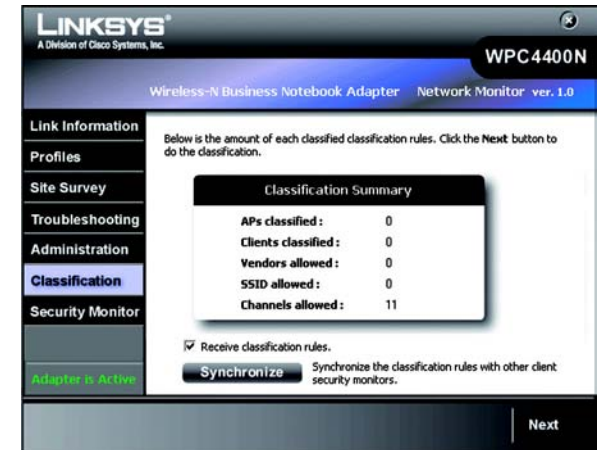


Figure 6-3: Classification

## AP Classification

The *AP Classification* Screen lets you classify the existing Access Points as Trusted or Untrusted. A Trusted device is one that has been identified by the system administrator to be known and legitimate. An Untrusted device is one that is known and not legitimate. This device could be a malicious device or simply a neighborhood device not part of the network. Remaining devices that have not been classified can be considered Unclassified or Unknown.

The left table lists the available unclassified wireless networks with their SSID, channels and MAC Addresses. The top right table lists the Access Points that have been classified as **Trusted**. The lower right table lists the Access Points that have been classified as **Untrusted**.

You may check any items from the **Unclassified Access Points** table and click the arrow to classify your selections into **Trusted Access Points** or **Untrusted Access Points**.

You may click **Refresh** to refresh the list or **Back** to go to the previous screen.

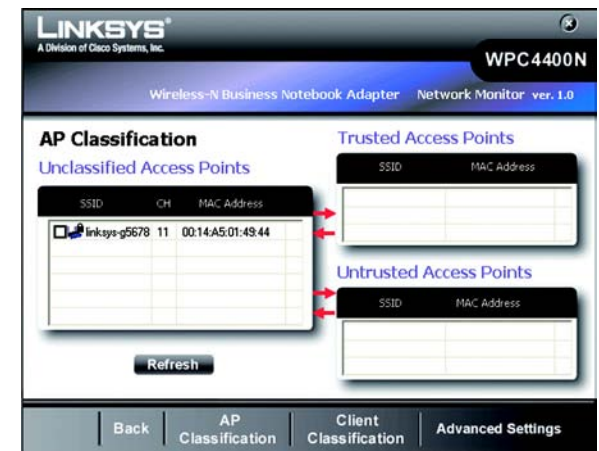


Figure 6-4: AP Classification

## Client Classification

The *Client Classification* Screen lets you classify the existing wireless clients into trusted networks and untrusted networks. New Client information is received from Linksys Business Series Access Points. New Clients start off as Unclassified until the System Administrator classifies them. A Trusted Client is one that has been identified by the System Administrator to be known and legitimate. An Untrusted Client is one that is known and not legitimate. This client could be a malicious client or simply a neighborhood client not part of the network. Remaining clients that have not been classified can be considered Unclassified or Unknown.

The left table lists the available unclassified clients with their associated Access Point's SSID. The top right table lists the clients that have been classified as **Trusted**. The lower right table lists the clients that have been classified as **Untrusted**.

You may check any items from the **Unclassified Clients** table and click the arrow to classify your selections into **Trusted Clients** or **Untrusted Clients**.

You may click **Refresh** to refresh the list.

## Advanced Settings

Click **Advanced Settings** for classifying your wireless networks with more options, such as **Mac Address**, **Vendor**, **SSID** and **Channel**.

## Trusted MAC Addresses

The *MAC Addresses* Screen provides information and function for configuring the existing wireless networks as trusted networks with MAC Access control of the Access Points and the clients.

The tables list the entry of MAC addresses of your trusted or allowed wireless Access Points and the clients.

Enter the 12-digit hexadecimal numbers in the field and click **Delete** or **Add** to delete or add the entry. You may click the **Vendor** tab to configure the trusted AP vendor list or **SSID** to configure the trusted SSID list, **Channel** to configure the trusted channel, **Back** to go to the previous screen.

The Trusted AP with the MAC Address that you have entered will be shown with its associated SSID and MAC Address in the *AP Classification* screen. However, it will be shown with an N/A SSID if it is not listed under the **Unclassified Access Points**.

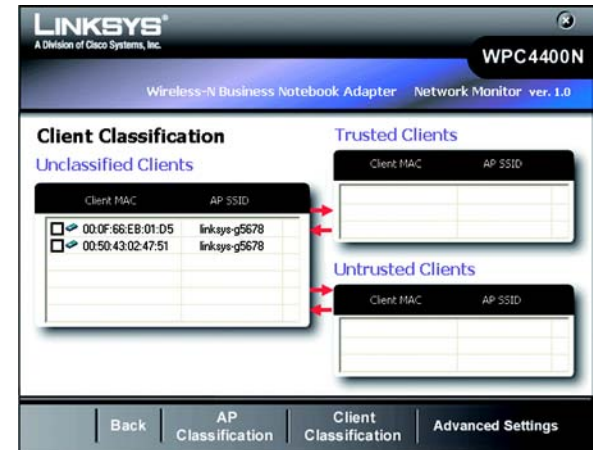


Figure 6-5: Client Classification



Figure 6-6: Trusted Mac Address

## Allowed SSID Configuration

The Existing SSID table shows the SSID of your trusted or allowed AP's SSID. You may check any item and click delete to delete it from the list.

**SSID** - This is the unique name of the wireless network. It is a 32-character unique identifier attached to the header of packets sent over a WLAN that acts a password when a mobile device tries to connect to the Access Point.

You may enter the **SSID** of your trusted/allowed wireless networks in the field and click **Add** to add it into your list.

## Allowed Vendor List Configuration

The Existing AP Vendor OUI lists the OUI and Vendor Name of your trusted or allowed Vendor's name. You may check any item and click **delete** to delete it from the list.

**OUI** - The **Organization Unique Identification** is the three-octet used to generate LAN MAC Addresses for hardware manufacturers.

**Vendor Name** - This is the name of your desired vendors.

You may select from the drop-down list for available vendor's names and click **Add** to add your desired vendors. You may also enter the Company's OUI and click **Add** to incorporate your vendor's OUI in the list. APs from vendors not on the allowed vendor list will be automatically classified as untrusted. Vendor OUI number is the first 6 digits of the AP's MAC address.



Figure 6-7: Allowed SSID Configuration



Figure 6-8: Allowed AP Vendor list Configuration

## Allowed Channel Configuration

The **Trusted Channel Configuration** shows the available channels for using in your wireless networks. You may check the channels or click **Check All** to check all of the channels and click **Save** to save your choice. Unclassified APs on unchecked channels will be automatically classified as untrusted.



Figure 6-9: Allowed Channel Configuration

## Security Monitor

The *Security Monitor* screen displays the statistics of your wireless network and alerts you of network activity. You may click **Channel Usage**, **AP Inventory**, **Client Inventory**, or **Alert** to proceed with more security Monitor functions.

### Channel Usage

The *Channel Usage* screen provides statistics of the distribution on your channel's usages. The histogram shows the number of Access Points in each channel. Click the radio buttons to show the specified period of time for data calculated. You may select on **24 hours** for data within the last 24 hours, **7 days** for data within the last 7 days or **select days** for a range of days.

You may click **AP Inventory** to view the statistics of the distribution on your AP's classifications or **Client Inventory** to view the distribution of the client's classifications on your wireless networks.

### AP Inventory

The *AP Inventory* screen provides statistics of the distribution grouped by your AP's classification of your wireless networks. The pie chart shows the percentage and number of each classification type. Click the radio buttons to show the specified period of time for data calculated. You may select on **24 hours** for data within the last 24 hours, **7 days** for data within the last 7 days or **select days** for a range of days.

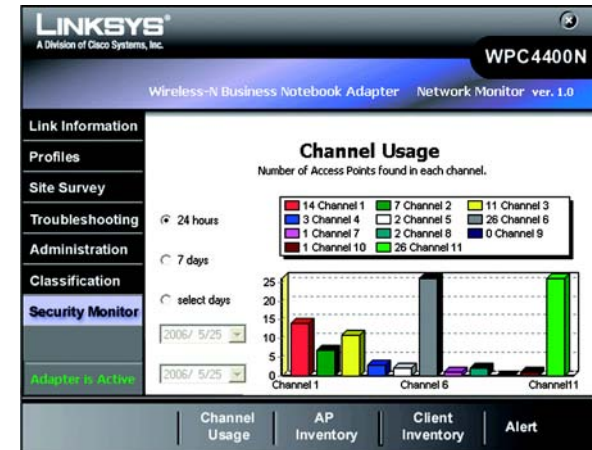


Figure 6-10: Security Monitor - Channel Usage

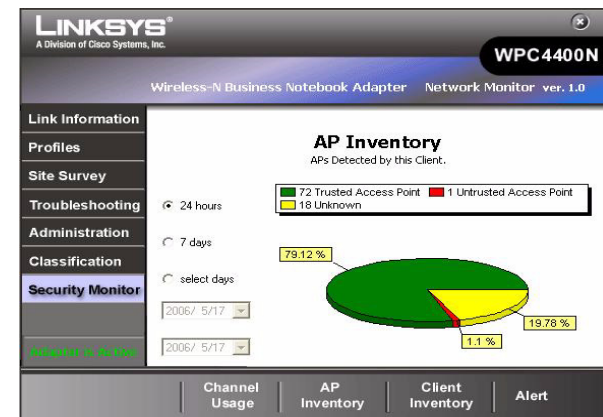


Figure 6-11: Security Monitor - AP Inventory



## Client Inventory

The *Client Inventory* screen provides statistics of Trusted, Untrusted, and Unknown Clients. The pie chart shows the percentage and number of each wireless client's classification. Click the radio buttons to show the specified period of time for the data calculated. You may select on **24 hours** for data within the last 24 hours, **7 days** for data within the last 7 days or **select days** for a range of days.



Figure 6-12: Security Monitor - Client Inventory

## Alert List

The *Alert List* screen shows the list of the alert activities within your monitored wireless networks. It requires an username and password to access this screen. Please refer to section "Administration" on page 38 for more information.

**MAC Address** - This shows the MAC Address of the wireless client that performed the action.

**Alert Description** - This shows brief descriptions of the alert activities. The alert system will alert you when new Access Point or wireless clients have been detected.

**Date/Time** - This indicates the date/time that an alert activity happened.

You may click any item to view a more detailed information for each event. You may also click **Back** to go to the previous screen or **Exit** to go to the main menu.

MAC	Alert Description	Date/Time
00:0E:D7:3D:D9:60	New Access Point Detected	5/31/2006 1:57:43 PM
00:90:4B:04:08:E6	New Access Point Detected	5/31/2006 1:56:29 PM
00:0F:CB:B2:80:07	New Access Point Detected	5/31/2006 1:56:29 PM
00:14:6C:B6:61:A7	New Access Point Detected	5/31/2006 1:56:10 PM
00:12:17:A2:27:44	New Access Point Detected	5/31/2006 1:56:10 PM
00:0F:CB:83:08:62	New Access Point Detected	5/31/2006 1:55:29 PM
00:0F:CB:80:3D:BF	New Access Point Detected	5/31/2006 1:55:29 PM

Figure 6-13: Security Monitor - Alert List



You will be alerted when an Access Point is detected.

## Alert Information

The *alert information* screen shows the detailed message of each alert event.

**Message** - This indicates the description of the event.

**MAC Address** - This shows the MAC Address of the wireless client or Access Point that performed the action.

**Severity** - This shows the level of the security severity of the action.

**Type** - This show the type of the networking activity that was performed.

**DateTime** - This shows the Date/Time of the alert.

**Description** - This shows the detailed description of the event.

You may click the **Advice** button to view the advice message, **Back** to go back to the previous screen, or **Exit** to go back to the main menu.

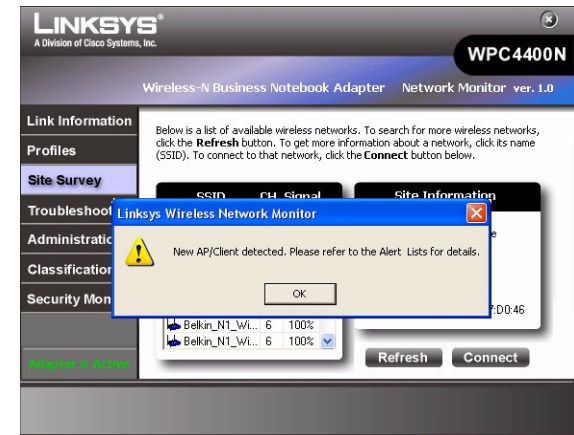


Figure 6-14: Security Monitor - POP-UP Alert



Figure 6-15: Alert Information

## Advice

The *Advice* screen shows the advice message of each alert event. You may adjust your wireless network settings according to the advice to better protect your networks.



**Figure 6-16: Security Monitor - Advice**

# Appendix A: Troubleshooting

This appendix consists of two parts: “Common Problems and Solutions” and “Frequently Asked Questions.” This appendix provides solutions to problems that may occur during the installation and operation of the Wireless-N Business Notebook Adapter. Read the description below to solve your problems. If you can't find an answer here, check the Linksys website at [www.linksys.com](http://www.linksys.com).

## Common Problems and Solutions

### 1. *My computer does not recognize the Wireless-N Business Notebook Adapter.*

Make sure that the Wireless-N Business Notebook Adapter is properly inserted into the PC Card slot.

### 2. *The Wireless-N Business Notebook Adapter does not work properly.*

Reinsert the *Wireless-N Business Notebook Adapter* into the notebook's PCMCIA slot. If the wizard for finding new hardware doesn't start automatically, troubleshoot with the following steps:

Right-click on **My Computer**, and select **Properties**. Select the Hardware tab and click on the **Device Manager**, then click on the **Network Adapter**. You will find the *Wireless-N Business Notebook Adapter* if it is installed successfully. If you see a yellow exclamation mark, the resources may be conflicting and you must follow the steps below:

- Uninstall the driver software from your PC.
- Restart your PC and repeat the hardware and software installation as specified in this User Guide.

### 3. *I cannot communicate with the other computers linked via Ethernet in the Infrastructure configuration.*

Make sure that the notebook or desktop is powered on.

Make sure that the *Wireless-N Business Notebook Adapter* is configured with the same SSID and WEP settings as the other computers in the Infrastructure configuration.

## Frequently Asked Questions

### ***Can I run an application from a remote computer over the wireless network?***

This will depend on whether or not the application is designed to be used over a network. Consult the application's user guide to determine if it supports operation over a network.

### ***How will the Wireless networking technology help with my business?***

Keeping your business connected in the internet and managing networking in your office without wires give you the freedom to create a dynamic office environment that changes and grows as your business needs. The Linksys Wireless-N Business Notebook Adapter will not only let you communicate sensitive data in a wireless setting but also give you the security and management options within your monitored networks. We designed our wireless products to be simple to set up with the advances of the latest data encryption methods and Security Monitor functions. It is aimed to benefit your business from its full wireless networking while stayed protected.

### ***What is 802.11n standard?***

802.11n builds upon previous 802.11 standards by adding MIMO (multiple-input multiple-output). MIMO uses multiple transmitter and receiver antennas to allow for increased data throughput and increased operating ranges. The real data throughput is estimated to be 540Mbps which is 10 times faster than 802.11a

### ***What is the 802.11b standard?***

It is one of the standards for wireless networks. The 802.11b standard allows wireless networking hardware from different manufacturers to communicate, provided that the hardware complies with the 802.11b standard. The 802.11b standard states a maximum data transfer rate of 11Mbps and an operating frequency of 2.4GHz.

### ***What is the IEEE 802.11g standard?***

It is one of the IEEE standards for wireless networks. The 802.11g standard allows wireless networking hardware from different manufacturers to communicate, provided that the hardware complies with the 802.11g standard. The 802.11g standard states a maximum data transfer rate of 54Mbps and an operating frequency of 2.4GHz.

### ***What 802.11b features are supported?***

The product supports the following 802.11b functions:

- CSMA/CA plus Acknowledge protocol
- Multi-Channel Roaming
- Automatic Rate Selection
- RTS/CTS feature
- Fragmentation
- Power Management

***What IEEE 802.11g features are supported?***

The product supports the following IEEE 802.11g functions:

- CSMA/CA plus Acknowledge protocol
- OFDM protocol
- Multi-Channel Roaming
- Automatic Rate Selection
- RTS/CTS feature
- Fragmentation
- Power Management

***What is ad-hoc mode?***

When a wireless network is set to ad-hoc mode, the wireless-equipped computers are configured to communicate directly with each other. This type of network will not communicate with any wired network.

***What is infrastructure mode?***

When a wireless network is set to infrastructure mode, the wireless network is configured to communicate with a wired network through a wireless access point.

***What is roaming?***

Roaming is the ability of a portable computer user to communicate continuously while moving freely throughout an area greater than that covered by a single access point. Before using the roaming function, the workstation must make sure that it is the same channel number with the access point of dedicated coverage area.

To achieve true seamless connectivity, the wireless LAN must incorporate a number of different functions. Each node and access point, for example, must always acknowledge receipt of each message. Each node must maintain contact with the wireless network even when not actually transmitting data. Achieving these functions simultaneously requires a dynamic RF networking technology that links access points and nodes. In such a system, the user's end node undertakes a search for the best possible access to the system. First, it evaluates such factors as signal strength and quality, as well as the message load currently being carried by each access point and the distance of each access point to the wired backbone. Based on that information, the node next selects the right access point and registers its address. Communications between end node and host computer can then be transmitted up and down the backbone.

As the user moves on, the end node's RF transmitter regularly checks the system to determine whether it is in touch with the original access point or whether it should seek a new one. When a node no longer receives acknowledgment from its original access point, it undertakes a new search. Upon finding a new access point, it then re-registers, and the communication process continues.

***What is ISM band?***

The FCC and their counterparts outside of the U.S. have set aside bandwidth for unlicensed use in the ISM (Industrial, Scientific and Medical) band. Spectrum in the vicinity of 2.4 GHz, in particular, is being made available worldwide. This presents a truly revolutionary opportunity to place convenient high-speed wireless capabilities in the hands of users around the globe.

***What is Spread Spectrum?***

Spread Spectrum technology is a wideband radio frequency technique developed by the military for use in reliable, secure, mission-critical communications systems. It is designed to trade off bandwidth efficiency for reliability, integrity, and security. In other words, more bandwidth is consumed than in the case of narrowband transmission, but the trade-off produces a signal that is, in effect, louder and thus easier to detect, provided that the receiver knows the parameters of the spread-spectrum signal being broadcast. If a receiver is not tuned to the right frequency, a spread-spectrum signal looks like background noise. There are two main alternatives, Direct Sequence Spread Spectrum (DSSS) and Frequency Hopping Spread Spectrum (FHSS).

***What is DSSS? What is FHSS? And what are their differences?***

Frequency-Hopping Spread-Spectrum (FHSS) uses a narrowband carrier that changes frequency in a pattern that is known to both transmitter and receiver. Properly synchronized, the net effect is to maintain a single logical channel. To an unintended receiver, FHSS appears to be short-duration impulse noise. Direct-Sequence Spread-Spectrum (DSSS) generates a redundant bit pattern for each bit to be transmitted. This bit pattern is called a chip (or chipping code). The longer the chip, the greater the probability that the original data can be recovered. Even if one or more bits in the chip are damaged during transmission, statistical techniques embedded in the radio can recover the original data without the need for retransmission. To an unintended receiver, DSSS appears as low power wideband noise and is rejected (ignored) by most narrowband receivers.

***What is WEP?***

WEP is Wired Equivalent Privacy, a data privacy mechanism based on a shared key algorithm, as described in the 802.11 standard.

***What is WPA?***

WPA is Wi-Fi Protected Access, a wireless security protocol that can be used in conjunction with a RADIUS server.

***What is RADIUS?***

RADIUS is Remote Authentication Dial-In User Service, which uses an authentication server to control network access.

# Appendix B: Windows XP Wireless Zero Configuration

## Windows XP Wireless Zero Configuration

If your computer is running Windows XP, then this choice will be available. If you want to use Windows XP Wireless Zero Configuration to control the Adapter, instead of using the Wireless Network Monitor, then right-click on the Wireless Network Monitor and select **Use Windows XP Wireless Configuration**.

If you want to switch back to the Wireless Network Monitor, right-click the **Wireless Network Monitor** icon, and select **Use Linksys Wireless Network Monitor**.



Figure B-1: Wireless Network Monitor Icon

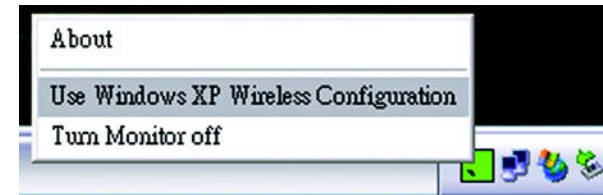


Figure B-2: Windows XP - Use Windows XP Wireless Configuration

1. After installing the Adapter, the Windows XP Wireless Zero Configuration icon will appear in your computer's system tray. Double-click the icon.



**NOTE:** For more information about Wireless Zero Configuration, refer to Windows Help.



Figure B-3: Windows XP Wireless Zero Configuration Icon



## Wireless-N Business Notebook Adapter

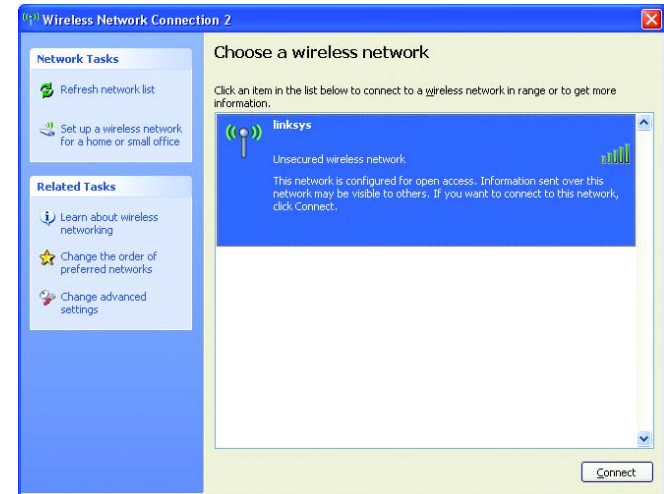
2. The screen that appears will show any available wireless network. Select the network you want. Click the **Connect** button.

If your network does not have wireless security enabled, go to step 3.

If your network does have wireless security enabled, go to step 4.



**NOTE:** Steps 2 and 3 are the instructions and screenshots for Windows XP with Service Pack 2 installed.



**Figure B-4: Available Wireless Network**

3. If your network does not have wireless security enabled, click the **Connect Anyway** button to connect the Adapter to your network.



**Figure B-5: No Wireless Security**

4. If your network uses wireless security WEP, enter the WEP Key used into the *Network Key* and *Confirm network key* fields. If your network uses wireless security WPA Personal, enter the Passphrase used into the *Network Key* and *Confirm network key* fields. Click the **Connect** button.

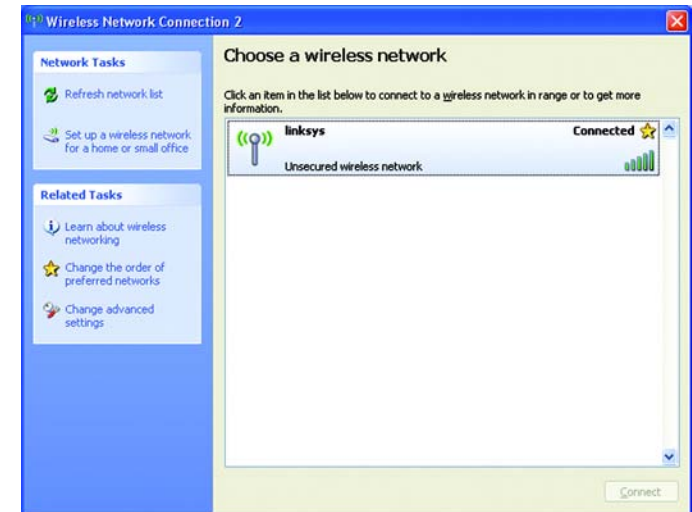


**Figure B-6: Network Connection - Wireless Security**



**NOTE:** Windows XP Wireless Zero Configuration does not support the use of a passphrase. Enter the exact WEP key used by your access point.

5. Your wireless network will appear as Connected when your connection is active.



For more information about wireless networking on a Windows XP computer, click the **Start** button, select **Help**, and choose **Support**. Enter the keyword wireless in the field provided, and press the **Enter** key.

**The installation of the Windows XP Wireless Configuration is complete.**

# Appendix C: Wireless Security

Linksys wants to make wireless networking as safe and easy for you as possible. The current generation of Linksys products provide several network security features, but they require specific action on your part for implementation. So, keep the following in mind whenever you are setting up or using your wireless network.

## Security Precautions

The following is a complete list of security precautions to take (at least steps 1 through 5 should be followed):

1. Change the default SSID.
2. Disable SSID Broadcast.
3. Change the default password for the Administrator account.
4. Enable MAC Address Filtering.
5. Change the SSID periodically.
6. Use the highest encryption algorithm possible. Use WPA if it is available. Please note that this may reduce your network performance.
7. Change the WEP encryption keys periodically.

## Security Threats Facing Wireless Networks

Wireless networks are easy to find. Hackers know that in order to join a wireless network, wireless networking products first listen for “beacon messages”. These messages can be easily decrypted and contain much of the network’s information, such as the network’s SSID (Service Set Identifier). Here are the steps you can take:

**Change the administrator’s password regularly.** With every wireless networking device you use, keep in mind that network settings (SSID, WEP keys, etc.) are stored in its firmware. Your network administrator is the only person who can change network settings. If a hacker gets a hold of the administrator’s password, he, too, can change those settings. So, make it harder for a hacker to get that information. Change the administrator’s password regularly.

**SSID.** There are several things to keep in mind about the SSID:



**Note:** Some of these security features are available only through the network router or access point. Refer to the router or access point’s documentation for more information.

1. Disable Broadcast
2. Make it unique
3. Change it often

Most wireless networking devices will give you the option of broadcasting the SSID. While this option may be more convenient, it allows anyone to log into your wireless network. This includes hackers. So, don't broadcast the SSID.

Wireless networking products come with a default SSID set by the factory. (The Linksys default SSID is "linksys".) Hackers know these defaults and can check these against your network. Change your SSID to something unique and not something related to your company or the networking products you use.

Change your SSID regularly so that any hackers who have gained access to your wireless network will have to start from the beginning in trying to break in.

**MAC Addresses.** Enable MAC Address filtering. MAC Address filtering will allow you to provide access to only those wireless nodes with certain MAC Addresses. This makes it harder for a hacker to access your network with a random MAC Address.

**WEP Encryption.** Wired Equivalent Privacy (WEP) is often looked upon as a cure-all for wireless security concerns. This is overstating WEP's ability. Again, this can only provide enough security to make a hacker's job more difficult.

There are several ways that WEP can be maximized:

1. Use the highest level of encryption possible
2. Use "Shared Key" authentication
3. Change your WEP key regularly

**WPA.** Wi-Fi Protected Access (WPA) is the newest and best available standard in Wi-Fi security. Three modes are available: WPA-Personal, WPA Enterprise, and Radius. WPA-Personal gives you a choice of two encryption methods: TKIP (Temporal Key Integrity Protocol), which utilizes a stronger encryption method and incorporates Message Integrity Code (MIC) to provide protection against hackers, and AES (Advanced Encryption System), which utilizes a symmetric 128-Bit block data encryption. WPA Enterprise offers two encryption methods, TKIP and AES, with dynamic encryption keys. RADIUS (Remote Authentication Dial-In User Service) utilizes a RADIUS server for authentication.



**Important:** Always remember that each device in your wireless network **MUST** use the same encryption method and encryption key or your wireless network will not function properly.

**WPA-Personal.** If you do not have a RADIUS server, Select the type of algorithm, TKIP or AES, and enter a password in the Passphrase field of 8-63 characters.

**WPA Enterprise.** WPA used in coordination with a RADIUS server. (This should only be used when a RADIUS server is connected to the Router or other device.) WPA Enterprise offers two encryption methods, TKIP and AES, with dynamic encryption keys.

**WPA2.** WPA2 is a wireless security standard that defines stronger encryption, authentication and key management than WPA.

**RADIUS.** WEP used in coordination with a RADIUS server. (This should only be used when a RADIUS server is connected to the Router or other device.)

Implementing encryption may have a negative impact on your network's performance, but if you are transmitting sensitive data over your network, encryption should be used.

These security recommendations should help keep your mind at ease while you are enjoying the most flexible and convenient technology Linksys has to offer.

# Appendix D: Windows Help

All wireless products require Microsoft Windows. Windows is the most used operating system in the world and comes with many features that help make networking easier. These features can be accessed through Windows Help and are described in this appendix.

## TCP/IP

Before a computer can communicate with an access point or wireless router, TCP/IP must be enabled. TCP/IP is a set of instructions, or protocol, all PCs follow to communicate over a network. This is true for wireless networks as well. Your PCs will not be able to utilize wireless networking without having TCP/IP enabled. Windows Help provides complete instructions on enabling TCP/IP.

## Shared Resources

If you wish to share printers, folder, or files over your network, Windows Help provides complete instructions on utilizing shared resources.

## Network Neighborhood/My Network Places

Other PCs on your network will appear under Network Neighborhood or My Network Places (depending upon the version of Windows you're running). Windows Help provides complete instructions on adding PCs to your network.

# Appendix E: Glossary

This glossary contains some basic networking terms you may come across when using this product. For more advanced terms, see the complete Linksys glossary at <http://www.linksys.com/glossary>.

**Access Point** - A device that allows wireless-equipped computers and other devices to communicate with a wired network. Also used to expand the range of a wireless network.

**Ad-hoc** - A group of wireless devices communicating directly with each other (peer-to-peer) without the use of an access point.

**AES (Advanced Encryption Standard)** - A security method that uses symmetric 128-bit block data encryption.

**Bandwidth** - The transmission capacity of a given device or network.

**Bit** - A binary digit.

**Boot** - To start a device and cause it to start executing instructions.

**Broadband** - An always-on, fast Internet connection.

**Browser** - An application program that provides a way to look at and interact with all the information on the World Wide Web.

**Byte** - A unit of data that is usually eight bits long

**Cable Modem** - A device that connects a computer to the cable television network, which in turn connects to the Internet.

**Daisy Chain** - A method used to connect devices in a series, one after the other.

**DDNS (Dynamic Domain Name System)** - Allows the hosting of a website, FTP server, or e-mail server with a fixed domain name (e.g., [www.xyz.com](http://www.xyz.com)) and a dynamic IP address.

**Default Gateway** - A device that forwards Internet traffic from your local area network.

**DHCP (Dynamic Host Configuration Protocol)** - A networking protocol that allows administrators to assign temporary IP addresses to network computers by "leasing" an IP address to a user for a limited amount of time, instead of assigning permanent IP addresses.

**DMZ (Demilitarized Zone)** - Removes the Router's firewall protection from one PC, allowing it to be "seen" from the Internet.

**DNS (Domain Name Server)** - The IP address of your ISP's server, which translates the names of websites into IP addresses.

**Domain** - A specific name for a network of computers.

**DOS (Denial of Service)** - A network security term which defines a type of attack designed to prevent legitimate users from using wireless service by flooding with useless/malicious traffic.

**Download** - To receive a file transmitted over a network.

**DSL (Digital Subscriber Line)** - An always-on broadband connection over traditional phone lines.

**Dynamic IP Address** - A temporary IP address assigned by a DHCP server.

**EAP (Extensible Authentication Protocol)** - A general authentication protocol used to control network access. Many specific authentication methods work within this framework.

**Encryption** - Encoding data transmitted in a network.

**Ethernet** - IEEE standard network protocol that specifies how data is placed on and retrieved from a common transmission medium.

**Firewall** - A set of related programs located at a network gateway server that protects the resources of a network from users from other networks.

**Firmware** - The programming code that runs a networking device.

**FTP (File Transfer Protocol)** - A protocol used to transfer files over a TCP/IP network.

**Full Duplex** - The ability of a networking device to receive and transmit data simultaneously.

**Gateway** - A device that interconnects networks with different, incompatible communications protocols.

**Half Duplex** - Data transmission that can occur in two directions over a single line, but only one direction at a time.

**HTTP (HyperText Transport Protocol)** - The communications protocol used to connect to servers on the World Wide Web.

**Infrastructure** - A wireless network that is bridged to a wired network via an access point.



**Intrusion attack** - A type of internet attacks in which an attacker tries to gain or access the information transmitted through the networks.

**IP (Internet Protocol)** - A protocol used to send data over a network.

**IP Address** - The address used to identify a computer or device on a network.

**IPCONFIG** - A Windows 2000 and XP utility that displays the IP address for a particular networking device.

**IPSec (Internet Protocol Security)** - A VPN protocol used to implement secure exchange of packets at the IP layer.

**ISP (Internet Service Provider)** - A company that provides access to the Internet.

**LAN** - The computers and networking products that make up your local network.

**MAC (Media Access Control) Address** - The unique address that a manufacturer assigns to each networking device.

**Mbps (MegaBits Per Second)** - One million bits per second; a unit of measurement for data transmission.

**NAT (Network Address Translation)** - NAT technology translates IP addresses of a local area network to a different IP address for the Internet.

**Network** - A series of computers or devices connected for the purpose of data sharing, storage, and/or transmission between users.

**Packet** - A unit of data sent over a network.

**Passphrase** - Used much like a password, a passphrase simplifies the WEP encryption process by automatically generating the WEP encryption keys for Linksys products.

**Ping (Packet Internet Groper)** - An Internet utility used to determine whether a particular IP address is online.

**POP3 (Post Office Protocol 3)** - A standard mail server commonly used on the Internet.

**Port** - The connection point on a computer or networking device used for plugging in cables or adapters.

**Power over Ethernet (PoE)** - A technology enabling an Ethernet network cable to deliver both data and power.

**PPPoE (Point to Point Protocol over Ethernet)** - A type of broadband connection that provides authentication (username and password) in addition to data transport.

## Wireless-N Business Notebook Adapter

**PPTP (Point-to-Point Tunneling Protocol)** - A VPN protocol that allows the Point to Point Protocol (PPP) to be tunneled through an IP network. This protocol is also used as a type of broadband connection in Europe.

**QoS (Quality of Service)** - A mechanism which gives priorities to certain types of traffic to ensure the throughput; for example, the streaming multimedia.

**RADIUS (Remote Authentication Dial-In User Service)** - A protocol that uses an authentication server to control network access.

**RJ-45 (Registered Jack-45)** - An Ethernet connector that holds up to eight wires.

**Roaming** - The ability to take a wireless device from one access point's range to another without losing the connection.

**Router** - A networking device that connects multiple networks together.

**Server** - Any computer whose function in a network is to provide user access to files, printing, communications, and other services.

**SMTP (Simple Mail Transfer Protocol)** - The standard e-mail protocol on the Internet.

**SNMP (Simple Network Management Protocol)** - A widely used network monitoring and control protocol.

**SPI (Stateful Packet Inspection) Firewall** - A technology that inspects incoming packets of information before allowing them to enter the network.

**SSID (Service Set Identifier)** - It consists of 32 alphanumeric characters to identify a group of wireless network devices uniquely.

**Static IP Address** - A fixed address assigned to a computer or device that is connected to a network.

**Static Routing** - Forwarding data in a network via a fixed path.

**Subnet Mask** - An address code that determines the size of the network.

**Switch** - 1. A data switch that connects computing devices to host computers, allowing a large number of devices to share a limited number of ports. 2. A device for making, breaking, or changing the connections in an electrical circuit.

**TCP (Transmission Control Protocol)** - A network protocol for transmitting data that requires acknowledgement from the recipient of data sent.

**TCP/IP (Transmission Control Protocol/Internet Protocol)** - A set of instructions PCs use to communicate over a network.

**Telnet** - A user command and TCP/IP protocol used for accessing remote PCs.

**TFTP (Trivial File Transfer Protocol)** - A version of the TCP/IP FTP protocol that has no directory or password capability.

**Throughput** - The amount of data moved successfully from one node to another in a given time period.

**TKIP (Temporal Key Integrity Protocol)** - a wireless encryption protocol that provides dynamic encryption keys for each packet transmitted.

**Topology** - The physical layout of a network.

**TX Rate** - Transmission Rate.

**Upgrade** - To replace existing software or firmware with a newer version.

**Upload** - To transmit a file over a network.

**URL (Uniform Resource Locator)** - The address of a file located on the Internet.

**VPN (Virtual Private Network)** - A security measure to protect data as it leaves one network and goes to another over the Internet.

**WAN (Wide Area Network)**- The Internet.

**WEP (Wired Equivalent Privacy)** - A method of encrypting network data transmitted on a wireless network for greater security.

**WLAN (Wireless Local Area Network)** - A group of computers and associated devices that communicate with each other wirelessly.

**WPA (Wi-Fi Protected Access)** - a wireless security protocol using TKIP (Temporal Key Integrity Protocol) encryption, which can be used in conjunction with a RADIUS server.

# Appendix F: Specifications

<b>Standards</b>	IEEE 802.11g, IEEE 802.11b, draft IEEE 802.11n
<b>Channels</b>	802.11b/802.11g/Wireless-N (20MHz)  11 Channels (USA, Canada) 13 Channels (Europe)
<b>LEDs</b>	Wireless, Activity
<b>Protocols</b>	802.11b: CCK (11 Mbps), DQPSK (2 Mbps), DBPSK (1 Mbps); 802.11g: OFDM  Wireless-N: BPSK, QPSK, 16-QAM, 64-QAM
<b>Transmitted Power</b>	802.11g: 23 ± 1 dBm (Typical) 802.11b: 22 ± 1 dBm (Typical)
<b>Receive Sensitivity</b>	54Mbps @ -70dBm (Typical) Wireless-N @ -70dBm (Typical)
<b>Security Features</b>	WEP, WPA
<b>WEP Key Bits</b>	64, 128 Bit
<b>Dimensions</b>	4.76" x 0.59" x 2.13"(121 mm x 15 mm x 54 mm)
<b>Unit Weight</b>	1.76 oz. (0.05 kg.)
<b>Certifications</b>	FCC, Wi-Fi
<b>Operating Temp.</b>	32°F to 149°F (0°C to 65°C)
<b>Storage Temp.</b>	-4°F to 185°F (-20°C to 85°C)

**Wireless-N Business Notebook Adapter**

**Operating Humidity** 90% Maximum, Non-Condensing

**Storage Humidity** 90% Maximum, Non-Condensing

# Appendix G: Warranty Information

## LIMITED WARRANTY

Linksys warrants to You that, for a period of three years (the “Warranty Period”), your Linksys Product will be substantially free of defects in materials and workmanship under normal use. Your exclusive remedy and Linksys' entire liability under this warranty will be for Linksys at its option to repair or replace the Product or refund Your purchase price less any rebates. This limited warranty extends only to the original purchaser.

If the Product proves defective during the Warranty Period call Linksys Technical Support in order to obtain a Return Authorization Number, if applicable. **BE SURE TO HAVE YOUR PROOF OF PURCHASE ON HAND WHEN CALLING.** If You are requested to return the Product, mark the Return Authorization Number clearly on the outside of the package and include a copy of your original proof of purchase. **RETURN REQUESTS CANNOT BE PROCESSED WITHOUT PROOF OF PURCHASE.** You are responsible for shipping defective Products to Linksys. Linksys pays for UPS Ground shipping from Linksys back to You only. Customers located outside of the United States of America and Canada are responsible for all shipping and handling charges.

**ALL IMPLIED WARRANTIES AND CONDITIONS OF MERCHANTABILITY OR FITNESS FOR A PARTICULAR PURPOSE ARE LIMITED TO THE DURATION OF THE WARRANTY PERIOD. ALL OTHER EXPRESS OR IMPLIED CONDITIONS, REPRESENTATIONS AND WARRANTIES, INCLUDING ANY IMPLIED WARRANTY OF NON-INFRINGEMENT, ARE DISCLAIMED.** Some jurisdictions do not allow limitations on how long an implied warranty lasts, so the above limitation may not apply to You. This warranty gives You specific legal rights, and You may also have other rights which vary by jurisdiction.

This warranty does not apply if the Product (a) has been altered, except by Linksys, (b) has not been installed, operated, repaired, or maintained in accordance with instructions supplied by Linksys, or (c) has been subjected to abnormal physical or electrical stress, misuse, negligence, or accident. In addition, due to the continual development of new techniques for intruding upon and attacking networks, Linksys does not warrant that the Product will be free of vulnerability to intrusion or attack.

**TO THE EXTENT NOT PROHIBITED BY LAW, IN NO EVENT WILL LINKSYS BE LIABLE FOR ANY LOST DATA, REVENUE OR PROFIT, OR FOR SPECIAL, INDIRECT, CONSEQUENTIAL, INCIDENTAL OR PUNITIVE DAMAGES, REGARDLESS OF THE THEORY OF LIABILITY (INCLUDING NEGLIGENCE), ARISING OUT OF OR RELATED TO THE USE OF OR INABILITY TO USE THE PRODUCT (INCLUDING ANY SOFTWARE), EVEN IF LINKSYS HAS BEEN ADVISED OF THE POSSIBILITY OF SUCH DAMAGES. IN NO EVENT WILL LINKSYS' LIABILITY EXCEED THE AMOUNT PAID BY YOU FOR THE PRODUCT.** The foregoing limitations will apply even if any warranty or remedy provided under this Agreement fails of its essential purpose. Some jurisdictions do not allow the exclusion or limitation of incidental or consequential damages, so the above limitation or exclusion may not apply to You.

Please direct all inquiries to: Linksys, P.O. Box 18558, Irvine, CA 92623.

# Appendix H: Regulatory Information

## **Federal Communication Commission Interference Statement**

This equipment has been tested and found to comply with the limits for a Class B digital device, pursuant to Part 15 of the FCC Rules. These limits are designed to provide reasonable protection against harmful interference in a residential installation. This equipment generates, uses and can radiate radio frequency energy and, if not installed and used in accordance with the instructions, may cause harmful interference to radio communications. However, there is no guarantee that interference will not occur in a particular installation. If this equipment does cause harmful interference to radio or television reception, which can be determined by turning the equipment off and on, the user is encouraged to try to correct the interference by one of the following measures:

- Reorient or relocate the receiving antenna.
- Increase the separation between the equipment and receiver.
- Connect the equipment into an outlet on a circuit different from that to which the receiver is connected.
- Consult the dealer or an experienced radio/TV technician for help.

FCC Caution: Any changes or modifications not expressly approved by the party responsible for compliance could void the user's authority to operate this equipment.

This device complies with Part 15 of the FCC Rules. Operation is subject to the following two conditions: (1) This device may not cause harmful interference, and (2) this device must accept any interference received, including interference that may cause undesired operation.

### **IMPORTANT NOTE:**

#### **FCC Radiation Exposure Statement:**

This equipment complies with FCC radiation exposure limits set forth for an uncontrolled environment.

End users must follow the specific operating instructions for satisfying RF exposure compliance.



This transmitter must not be co-located or operating in conjunction with any other antenna or transmitter.

This equipment has been SAR-evaluated for use in laptops (notebooks) with side slot configuration.

To maintain compliance with FCC RF exposure compliance requirements, please follow operation instruction as documented in this manual.

**Linksys declares that WPC4400N ( FCC ID: Q87-WPC4400N ) is limited in CH1~CH11 for 2.4 GHz by specified firmware controlled in U.S.A.**

SAR compliance has been established in typical laptop computer(s) with CardBus slot, and product could be used in typical laptop  computer with CardBus slot. Other application like handheld PC or similar device has not been verified and may not compliance with  related RF exposure rule and such use shall be prohibited.

## **IC statement**

This Class B digital apparatus complies with Canadian ICES-003.

Cet appareil numérique de la classe B est conforme à la norme NMB-003 du Canada.

Operation is subject to the following two conditions:

- 1) This device may not cause interference and
- 2) This device must accept any interference, including interference that may cause undesired operation of the device.

### **IMPORTANT NOTE:**

#### **IC Radiation Exposure Statement:**

This equipment complies with IC radiation exposure limits set forth for an uncontrolled environment. End users must follow the specific operating instructions for satisfying RF exposure compliance. To maintain compliance with IC RF exposure compliance requirements, please follow operation instruction as documented in this manual.

This transmitter must not be co-located or operating in conjunction with any other antenna or transmitter.

## **Règlement d'Industry Canada**

Les conditions de fonctionnement sont sujettes à deux conditions:

- 1) Ce périphérique ne doit pas causer d'interférence et.
- 2) Ce périphérique doit accepter toute interférence, y compris les interférences pouvant perturber le bon fonctionnement de ce périphérique.

**User Information for Consumer Products Covered by EU Directive 2002/96/EC on Waste Electric and Electronic Equipment (WEEE)**

This document contains important information for users with regards to the proper disposal and recycling of Linksys products. Consumers are required to comply with this notice for all electronic products bearing the following symbol:



**English**

**Environmental Information for Customers in the European Union**

European Directive 2002/96/EC requires that the equipment bearing this symbol on the product and/or its packaging must not be disposed of with unsorted municipal waste. The symbol indicates that this product should be disposed of separately from regular household waste streams. It is your responsibility to dispose of this and other electric and electronic equipment via designated collection facilities appointed by the government or local authorities. Correct disposal and recycling will help prevent potential negative consequences to the environment and human health. For more detailed information about the disposal of your old equipment, please contact your local authorities, waste disposal service, or the shop where you purchased the product.

**Ceština/Czech**

**Informace o ochraně životního prostředí pro zákazníky v zemích Evropské unie**

Evropská směrnice 2002/96/ES zakazuje, aby zařízení označené tímto symbolem na produktu anebo na obalu bylo likvidováno s netříděným komunálním odpadem. Tento symbol udává, že daný produkt musí být likvidován odděleně od běžného komunálního odpadu. Odpovídáte za likvidaci tohoto produktu a dalších elektrických a elektronických zařízení prostřednictvím určených sběrných míst stanovených vládou nebo místními úřady. Správná likvidace a recyklace pomáhá předcházet potenciálním negativním dopadům na životní prostředí a lidské zdraví. Podrobnější informace o likvidaci starého vybavení si laskavě vyžádejte od místních úřadů, podniku zabývajícího se likvidací komunálních odpadů nebo obchodu, kde jste produkt zakoupili.

## Dansk/Danish

### Miljøinformation for kunder i EU

EU-direktiv 2002/96/EF kræver, at udstyr der bærer dette symbol på produktet og/eller emballagen ikke må bortskaffes som usorteret kommunalt affald. Symbolet betyder, at dette produkt skal bortskaffes adskilt fra det almindelige husholdningsaffald. Det er dit ansvar at bortskaffe dette og andet elektrisk og elektronisk udstyr via bestemte indsamlingssteder udpeget af staten eller de lokale myndigheder. Korrekt bortskaffelse og genvinding vil hjælpe med til at undgå mulige skader for miljøet og menneskers sundhed. Kontakt venligst de lokale myndigheder, renovationstjenesten eller den butik, hvor du har købt produktet, angående mere detaljeret information om bortskaffelse af dit gamle udstyr.

## Deutsch/German

### Umweltinformation für Kunden innerhalb der Europäischen Union

Die Europäische Richtlinie 2002/96/EC verlangt, dass technische Ausrüstung, die direkt am Gerät und/oder an der Verpackung mit diesem Symbol versehen ist nicht zusammen mit unsortiertem Gemeindeabfall entsorgt werden darf. Das Symbol weist darauf hin, dass das Produkt von regulärem Haushaltsmüll getrennt entsorgt werden sollte. Es liegt in Ihrer Verantwortung, dieses Gerät und andere elektrische und elektronische Geräte über die dafür zuständigen und von der Regierung oder örtlichen Behörden dazu bestimmten Sammelstellen zu entsorgen. Ordnungsgemäßes Entsorgen und Recyceln trägt dazu bei, potentielle negative Folgen für Umwelt und die menschliche Gesundheit zu vermeiden. Wenn Sie weitere Informationen zur Entsorgung Ihrer Altgeräte benötigen, wenden Sie sich bitte an die örtlichen Behörden oder städtischen Entsorgungsdienste oder an den Händler, bei dem Sie das Produkt erworben haben.

## Eesti/Estonian

### Keskkonnaalane informatsioon Euroopa Liidus asuvatele klientidele

Euroopa Liidu direktiivi 2002/96/EÜ nõuete kohaselt on seadmeid, millel on tootel või pakendil käesolev sümbol, keelatud kõrvaldada koos sorteerimata olmejäätmetega. See sümbol näitab, et toode tuleks kõrvaldada eraldi tavalistest olmejäätmevoogudest. Olete kohustatud kõrvaldama käesoleva ja ka muud elektri- ja elektroonikaseadmed riigi või kohalike ametiasutuste poolt ette nähtud kogumispunktide kaudu. Seadmete korrektne kõrvaldamine ja ringlussevõtt aitab vältida võimalikke negatiivseid tagajärgi keskkonnale ning inimeste tervisele. Vanade seadmete kõrvaldamise kohta täpsema informatsiooni saamiseks võtke palun ühendust kohalike ametiasutustega, jäätmekäitlusfirmaga või kauplusega, kust te toote ostsite.

## Español/Spanish

### Información medioambiental para clientes de la Unión Europea

La Directiva 2002/96/CE de la UE exige que los equipos que lleven este símbolo en el propio aparato y/o en su embalaje no deben eliminarse junto con otros residuos urbanos no seleccionados. El símbolo indica que el producto en cuestión debe separarse de los residuos domésticos convencionales con vistas a su eliminación. Es responsabilidad suya desechar este y cualesquiera otros aparatos eléctricos y electrónicos a través de los puntos de recogida que ponen a su disposición el gobierno y las autoridades locales. Al desechar y reciclar correctamente estos aparatos estará contribuyendo a evitar posibles consecuencias negativas para el medio ambiente y la salud de las personas. Si desea obtener información más detallada sobre la eliminación segura de su aparato usado, consulte a las autoridades locales, al servicio de recogida y eliminación de residuos de su zona o pregunte en la tienda donde adquirió el producto.

## Ελληνικά/Greek

### Στοιχεία περιβαλλοντικής προστασίας για πελάτες εντός της Ευρωπαϊκής Ένωσης

Η Κοινοτική Οδηγία 2002/96/EC απαιτεί ότι ο εξοπλισμός ο οποίος φέρει αυτό το σύμβολο στο προϊόν και/ή στη συσκευασία του δεν πρέπει να απορρίπτεται μαζί με τα μικτά κοινотικά απορρίμματα. Το σύμβολο υποδεικνύει ότι αυτό το προϊόν θα πρέπει να απορρίπτεται ξεχωριστά από τα συνήθη οικιακά απορρίμματα. Είστε υπεύθυνος για την απόρριψη του παρόντος και άλλου ηλεκτρικού και ηλεκτρονικού εξοπλισμού μέσω των καθορισμένων εγκαταστάσεων συγκέντρωσης απορριμμάτων οι οποίες παρέχονται από το κράτος ή τις αρμόδιες τοπικές αρχές. Η σωστή απόρριψη και ανακύκλωση συμβάλλει στην πρόληψη πιθανών αρνητικών συνεπειών για το περιβάλλον και την υγεία. Για περισσότερες πληροφορίες σχετικά με την απόρριψη του παλιού σας εξοπλισμού, παρακαλώ επικοινωνήστε με τις τοπικές αρχές, τις υπηρεσίες απόρριψης ή το κατάστημα από το οποίο αγοράσατε το προϊόν.

## Français/French

### Informations environnementales pour les clients de l'Union européenne

La directive européenne 2002/96/CE exige que l'équipement sur lequel est apposé ce symbole sur le produit et/ou son emballage ne soit pas jeté avec les autres ordures ménagères. Ce symbole indique que le produit doit être éliminé dans un circuit distinct de celui pour les déchets des ménages. Il est de votre responsabilité de jeter ce matériel ainsi que tout autre matériel électrique ou électronique par les moyens de collecte indiqués par le gouvernement et les pouvoirs publics des collectivités territoriales. L'élimination et le recyclage en bonne et due forme ont pour but de lutter contre l'impact néfaste potentiel de ce type de produits sur l'environnement et la santé publique. Pour plus d'informations sur le mode d'élimination de votre ancien équipement, veuillez prendre contact avec les pouvoirs publics locaux, le service de traitement des déchets, ou l'endroit où vous avez acheté le produit.

## Italiano/Italian

### Informazioni relative all'ambiente per i clienti residenti nell'Unione Europea

La direttiva europea 2002/96/EC richiede che le apparecchiature contrassegnate con questo simbolo sul prodotto e/o sull'imballaggio non siano smaltite insieme ai rifiuti urbani non differenziati. Il simbolo indica che questo prodotto non deve essere smaltito insieme ai normali rifiuti domestici. È responsabilità del proprietario smaltire sia questi prodotti sia le altre apparecchiature elettriche ed elettroniche mediante le specifiche strutture di raccolta indicate dal governo o dagli enti pubblici locali. Il corretto smaltimento ed il riciclaggio aiuteranno a prevenire conseguenze potenzialmente negative per l'ambiente e per la salute dell'essere umano. Per ricevere informazioni più dettagliate circa lo smaltimento delle vecchie apparecchiature in Vostro possesso, Vi invitiamo a contattare gli enti pubblici di competenza, il servizio di smaltimento rifiuti o il negozio nel quale avete acquistato il prodotto.

## Latviešu valoda/Latvian

### Ekoloģiska informācija klientiem Eiropas Savienības jurisdikcijā

Direktīvā 2002/96/EK ir prasība, ka aprīkojumu, kam pievienota zīme uz paša izstrādājuma vai uz tā iesaiņojuma, nedrīkst izmest nešķīrotā veidā kopā ar komunālajiem atkritumiem (tiem, ko rada vietēji iedzīvotāji un uzņēmumi). Šī zīme nozīmē to, ka šī ierīce ir jāizmet atkritumos tā, lai tā nenonāktu kopā ar parastiem mājsaimniecības atkritumiem. Jūsu pienākums ir šo un citas elektriskās un elektroniskās ierīces izmest atkritumos, izmantojot īpašus atkritumu savākšanas veidus un līdzekļus, ko nodrošina valsts un pašvaldību iestādes. Ja izmešana atkritumos un pārstrāde tiek veikta pareizi, tad mazinās iespējamais kaitējums dabai un cilvēku veselībai. Sīkākas ziņas par novecojuša aprīkojuma izmešanu atkritumos jūs varat saņemt vietējā pašvaldībā, atkritumu savākšanas dienestā, kā arī veikalā, kur iegādājāties šo izstrādājumu.

## Lietuvškai/Lithuanian

### Aplinkosaugos informacija, skirta Europos Sąjungos vartotojams

Europos direktyva 2002/96/EC numato, kad įrangos, kuri ir (arba) kurios pakuotė yra pažymėta šiuo simboliu, negalima šalinti kartu su nerūšiuotomis komunalinėmis atliekomis. Šis simbolis rodo, kad gaminį reikia šalinti atskirai nuo bendro buitinių atliekų srauto. Jūs privalote užtikrinti, kad ši ir kita elektros ar elektroninė įranga būtų šalinama per tam tikras nacionalinės ar vietinės valdžios nustatytas atliekų rinkimo sistemas. Tinkamai šalinant ir perdurbant atliekas, bus išvengta galimos žalos aplinkai ir žmonių sveikatai. Daugiau informacijos apie jūsų senos įrangos šalinimą gali pateikti vietinės valdžios institucijos, atliekų šalinimo tarnybos arba parduotuvės, kuriose įsigijote tą gaminį.

## Malti/Maltese

### Informazzjoni Ambjentali għal Kliġenti fl-Unjoni Ewropea

Id-Direttiva Ewropea 2002/96/KE titlob li t-tagħmir li jkun fih is-simbolu fuq il-prodott u/jew fuq l-ippakkjar ma jstax jintrema ma' skart municiġpali li ma għiex isseparat. Is-simbolu jindika li dan il-prodott għandu jintrema separatament minn ma' l-iskart domestiku regolari. Hija responsabbiltà tiegħek li tarmi dan it-tagħmir u kull tagħmir iehor ta' l-elettriku u elettroniku permezz ta' faċilitajiet ta' għbir appuntati apposta mill-gvern jew mill-awtoritajiet lokali. Ir-rimi b'mod korrett u r-riciklagg jghin jipprevjeni konsegwenzi negattivi potenzjali għall-ambjent u għas-saħħa tal-bniedem. Għal aktar informazzjoni dettaljata dwar ir-rimi tat-tagħmir antik tiegħek, jekk jogħġbok ikkuntattja lill-awtoritajiet lokali tiegħek, is-servizzi għar-rimi ta' l-iskart, jew il-hanut minn fejn xtrajt il-prodott.

## Magyar/Hungarian

### Környezetvédelmi információ az európai uniós vásárlók számára

A 2002/96/EC számú európai uniós irányelv megkívánja, hogy azokat a termékeket, amelyekben, és/vagy amelyek csomagolásán az alábbi címke megjelenik, tilos a többi szelektálatlan lakossági hulladékkal együtt kidobni. A címke azt jelöli, hogy az adott termék kidobásakor a szokványos háztartási hulladékelszállítási rendszerektől elkülönített eljárást kell alkalmazni. Az Ön felelőssége, hogy ezt, és más elektromos és elektronikus berendezéseit a kormányzati vagy a helyi hatóságok által kijelölt gyűjtőrendszeren keresztül számolja fel. A megfelelő hulladékfeldolgozás segít a környezetre és az emberi egészségre potenciálisan ártalmas negatív hatások megelőzésében. Ha elavult berendezéseinek felszámolásához további részletes információra van szüksége, kérjük, lépjen kapcsolatba a helyi hatóságokkal, a hulladékfeldolgozási szolgálattal, vagy azzal üzlettel, ahol a terméket vásárolta.

## Nederlands/Dutch

### Milieu-informatie voor klanten in de Europese Unie

De Europese Richtlijn 2002/96/EC schrijft voor dat apparatuur die is voorzien van dit symbool op het product of de verpakking, niet mag worden ingezameld met niet-gescheiden huishoudelijk afval. Dit symbool geeft aan dat het product apart moet worden ingezameld. U bent zelf verantwoordelijk voor de vernietiging van deze en andere elektrische en elektronische apparatuur via de daarvoor door de landelijke of plaatselijke overheid aangewezen inzamelingskanalen. De juiste vernietiging en recycling van deze apparatuur voorkomt mogelijke negatieve gevolgen voor het milieu en de gezondheid. Voor meer informatie over het vernietigen van uw oude apparatuur neemt u contact op met de plaatselijke autoriteiten of afvalverwerkingsdienst, of met de winkel waar u het product hebt aangeschaft.

## Norsk/Norwegian

### Miljøinformasjon for kunder i EU

EU-direktiv 2002/96/EF krever at utstyr med følgende symbol avbildet på produktet og/eller pakningen, ikke må kastes sammen med usortert avfall. Symbolet indikerer at dette produktet skal håndteres atskilt fra ordinær avfallsinnsamling for husholdningsavfall. Det er ditt ansvar å kvitte deg med dette produktet og annet elektrisk og elektronisk avfall via egne innsamlingsordninger slik myndighetene eller kommunene bestemmer. Korrekt avfallshåndtering og gjenvinning vil være med på å forhindre mulige negative konsekvenser for miljø og helse. For nærmere informasjon om håndtering av det kasserte utstyret ditt, kan du ta kontakt med kommunen, en innsamlingsstasjon for avfall eller butikken der du kjøpte produktet.

## Polski/Polish

### Informacja dla klientów w Unii Europejskiej o przepisach dotyczących ochrony środowiska

Dyrektywa Europejska 2002/96/EC wymaga, aby sprzęt oznaczony symbolem znajdującym się na produkcie i/lub jego opakowaniu nie był wyrzucany razem z innymi niesortowanymi odpadami komunalnymi. Symbol ten wskazuje, że produkt nie powinien być usuwany razem ze zwykłymi odpadami z gospodarstw domowych. Na Państwu spoczywa obowiązek wyrzucania tego i innych urządzeń elektrycznych oraz elektronicznych w punktach odbioru wyznaczonych przez władze krajowe lub lokalne. Pozbywanie się sprzętu we właściwy sposób i jego recykling pomogą zapobiec potencjalnie negatywnym konsekwencjom dla środowiska i zdrowia ludzkiego. W celu uzyskania szczegółowych informacji o usuwaniu starego sprzętu, prosimy zwrócić się do lokalnych władz, służb oczyszczania miasta lub sklepu, w którym produkt został nabyty.

## Português/Portuguese

### Informação ambiental para clientes da União Europeia

A Directiva Europeia 2002/96/CE exige que o equipamento que exibe este símbolo no produto e/ou na sua embalagem não seja eliminado junto com os resíduos municipais não separados. O símbolo indica que este produto deve ser eliminado separadamente dos resíduos domésticos regulares. É da sua responsabilidade eliminar este e qualquer outro equipamento eléctrico e electrónico através dos instalações de recolha designadas pelas autoridades governamentais ou locais. A eliminação e reciclagem correctas ajudarão a prevenir as consequências negativas para o ambiente e para a saúde humana. Para obter informações mais detalhadas sobre a forma de eliminar o seu equipamento antigo, contacte as autoridades locais, os serviços de eliminação de resíduos ou o estabelecimento comercial onde adquiriu o produto.

## Slovenčina/Slovak

### Informácie o ochrane životného prostredia pre zákazníkov v Európskej únii

Podľa európskej smernice 2002/96/ES zariadenie s týmto symbolom na produkte a/alebo jeho balení nesmie byť likvidované spolu s netriedeným komunálnym odpadom. Symbol znamená, že produkt by sa mal likvidovať oddelene od bežného odpadu z domácností. Je vašou povinnosťou likvidovať toto i ostatné elektrické a elektronické zariadenia prostredníctvom špecializovaných zberných zariadení určených vládou alebo miestnymi orgánmi. Správna likvidácia a recyklácia pomôže zabrániť prípadným negatívnym dopadom na životné prostredie a zdravie ľudí. Ak máte záujem o podrobnejšie informácie o likvidácii starého zariadenia, obráťte sa, prosím, na miestne orgány, organizácie zaoberajúce sa likvidáciou odpadov alebo obchod, v ktorom ste si produkt zakúpili.

## Slovenčina/Slovene

### Okoljske informacije za stranke v Evropski uniji

Evropska direktiva 2002/96/EC prepoveduje odlaganje opreme, označene s tem simbolom – na izdelku in/ali na embalaži – med običajne, nerazvrščene odpadke. Ta simbol opozarja, da je treba izdelek odvreči ločeno od preostalih gospodinjstvih odpadkov. Vaša odgovornost je, da to in preostalo električno in elektronsko opremo odnesete na posebna zbirališča, ki jih določijo državne ustanove ali lokalna uprava. S pravilnim odlaganjem in recikliranjem boste preprečili morebitne škodljive vplive na okolje in zdravje ljudi. Če želite izvedeti več o odlaganju stare opreme, se obrnite na lokalno upravo, odpad ali trgovino, kjer ste izdelek kupili.

## Suomi/Finnish

### Ympäristöä koskevia tietoja EU-alueen asiakkaille

EU-direktiivi 2002/96/EY edellyttää, että jos laitteistossa on tämä symboli itse tuotteessa ja/tai sen pakkauksessa, laitteistoa ei saa hävittää lajittelemattoman yhdyskuntajätteen mukana. Symboli merkitsee sitä, että tämä tuote on hävitettävä erillään tavallisesta kotitalousjätteestä. Sinun vastuullasi on hävittää tämä elektroniikkatuote ja muut vastaavat elektroniikkatuotteet viemällä tuote tai tuotteet viranomaisten määräämään keräyspisteeseen. Laitteiston oikea hävittäminen estää mahdolliset kielteiset vaikutukset ympäristöön ja ihmisten terveyteen. Lisätietoja vanhan laitteiston oikeasta hävitystavasta saa paikallisilta viranomaisilta, jätteenhävityspalvelusta tai siitä myymälästä, josta ostit tuotteen.

## Svenska/Swedish

### Miljöinformation för kunder i Europeiska unionen

Det europeiska direktivet 2002/96/EC kräver att utrustning med denna symbol på produkten och/eller förpackningen inte får kastas med osorterat kommunalt avfall. Symbolen visar att denna produkt bör kastas efter att den avskiljts från vanligt hushållsavfall. Det faller på ditt ansvar att kasta denna och annan elektrisk och elektronisk utrustning på fastställda insamlingsplatser utsedda av regeringen eller lokala myndigheter. Korrekt kassering och återvinning skyddar mot eventuella negativa konsekvenser för miljön och personhälsa. För mer detaljerad information om kassering av din gamla utrustning kontaktar du dina lokala myndigheter, avfallshanteringen eller butiken där du köpte produkten.

For more information, visit [www.linksys.com](http://www.linksys.com).

# Appendix I: Contact Information

**Need to contact Linksys?**

Visit us online for information on the latest products and updates to your existing products at:

<http://www.linksys.com> or  
[ftp.linksys.com](ftp://ftp.linksys.com)

Can't find information about a product you want to buy on the web? Do you want to know more about networking with Linksys products? Give our advice line a call at:  
Or fax your request in to:

800-546-5797 (LINKSYS)  
949-823-3002

If you experience problems with any Linksys product, you can call us at:

800-326-7114  
[support@linksys.com](mailto:support@linksys.com)

Don't wish to call? You can e-mail us at:

If any Linksys product proves defective during its warranty period, you can call the Linksys Return Merchandise Authorization department for obtaining a Return Authorization Number at:  
(Details on Warranty and RMA issues can be found in the Warranty Information section in this Guide.)

949-823-3000