



WHA YU INDUSTRIAL CO., LTD. (HEAD OFFICE)  
 DONGGUAN AEON TECH CO.,LTD.(CHINA)  
 TAI HWA ELECTRONIC CO., LTD.(CHINA)  
 SHANGHAI HUA YU ELECTRONIC CO., LTD.(CHINA)  
 SU ZHOU AEON TECH CO., LTD. (CHINA)

**SPECIFICATION FOR APPROVAL**

**CUSTOMER:** *Kiss Technology*

---

**PART NAME:** *RF Antenna Assembly*



---

**PART NO.:** \_\_\_\_\_ **REVISION:** \_\_\_\_\_

---

**W. Y. P/NO.:** *C1046-510003-A* **REV.:** *X1*

---

	MANUFACTURER SIGNATURE	CUSTOMER SIGNATURE
APPROVED BY :	<i>Winston</i> 	
DATE :	<i>02/15/07</i> 	

**WHA YU GROUP**

WHA YU INDUSTRIAL CO., LTD.(HEAD OFFICE)

譚裕實業股份有限公司

Address: No. 326, Sec. 2, Kung Tao 5 Road, Hsin Chu City, Taiwan, R.O.C.

Tel: +886-3-5714225(REP.) Fax: + 886-3-5713853 · + 886-3-5723600

DONGGUAN AEON TECH CO.,LTD.(CHINA)

東莞台霖電子通訊有限公司

Address: Lakeside Industrial Park, Da Ling Shan Town, Dong Guan City, Guangdong, China

Tel: + 86-769-85655858 Fax: + 86-769-8565525

TAI HWA ELECTRONIC FACTORY

台樺電業製品廠

Address: Pak Ho District, Hou Street Town, Dong Guan City, Guangdong, China

Tel: + 86-769-85599375 · + 86-769-85912375 Fax: + 86-769-85599376

HUA HONG INTERNATIONAL LTD.

華弘國際有限公司

Address: Rm.1103A, President Commercial Centre, 608 Nathan Road, Mong Kok, Kowloon, Hong Kong

Tel: + 86-852-27712210 Fax: + 86-852-23843747

SHANGHAI HUA YU ELECTRONIC CO., LTD. (CHINA)

上海譚裕電子有限公司

Address: 3586, Wai Qing Song Road, Qing Pu County, Shanghai China

Tel: + 86-21-59741348 · + 86-21-59744101~4 Fax: + 86-21-59741347

SU ZHOU AEON TECH CO., LTD. (CHINA)

蘇州華廣電通有限公司

Address: Limin North Road, LiLi Town, LiLi Industrial Park, LinHu Economic Zone

Wujiang City, Jiangsu Province, China

Tel: + 86-512-63627980 Fax: + 86-512-63627981

# *Contents*

<i>Item</i>	<i>Description</i>	<i>Page</i>
1. ....	天線規格表	..... 1
2. ....	成品圖	..... 2
3. ....	測試報告	..... 3~7
4. ....	<b>Cable</b> 規格	..... 8~9
5. ....	<b>Connector</b> 材質特性	..... 10
6. ....	<b>SGS</b> 測試	..... 11~63
7. ....	<b>RoHS</b> 排外條款	..... 64

# RF Antenna Cable Assembly

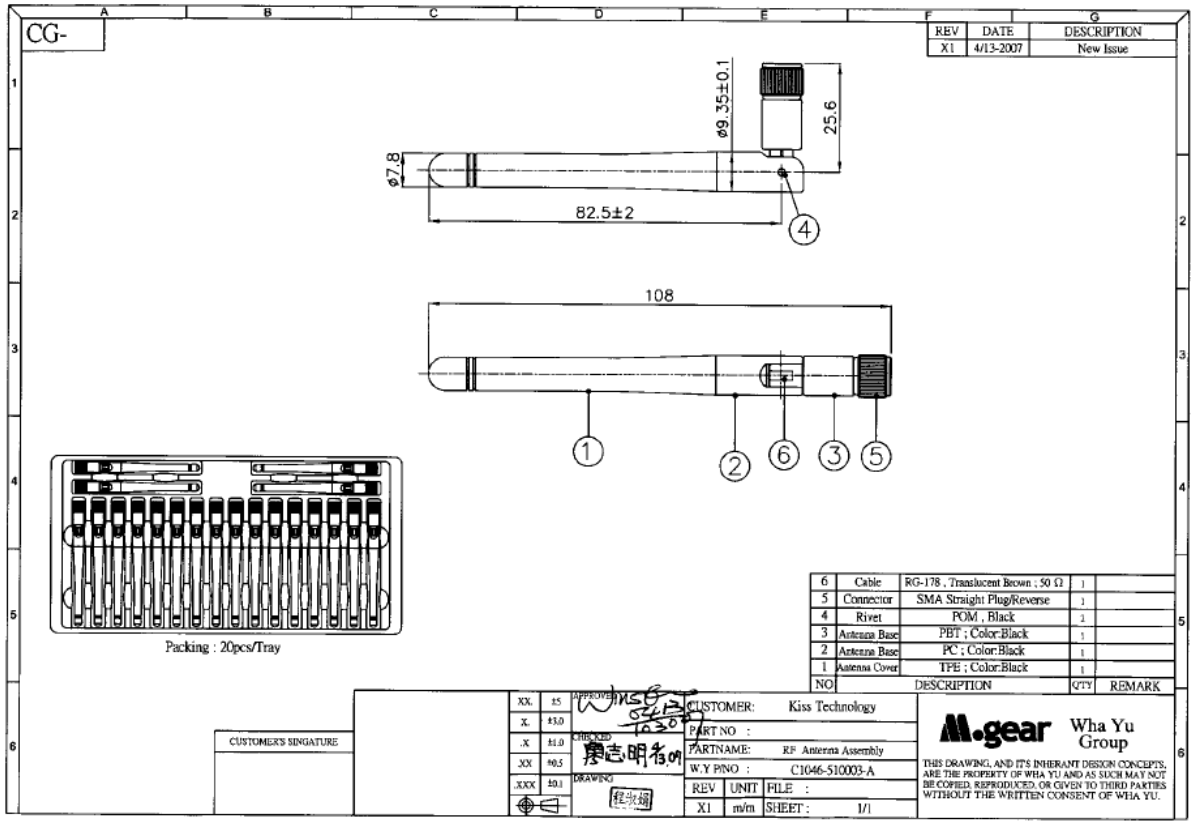
## Specification

### 1. Electrical Properties :

- 1.1 Frequency Range..... 2.4GHz ~ 2.5GHz ; 4.9GHz ~ 5.825GHz
- 1.2 Impedance ..... 50Ω Nominal
- 1.3 VSWR ..... 1.92 : 1 Max.
- 1.4 Return Loss.....-10 dB Max.
- 1.5 Radiation ..... Omni-directional
- 1.6 Gain..... 1.8dBi typ. @ 2.4GHz ~ 2.5GHz  
1.3dBi typ. @ 4.9GHz ~ 5.825GHz
- 1.7 Polarization..... Linear Vertical
- 1.8 Admitted Power..... 1W
- 1.9 Cable..... RG-178 Coaxial Cable
- 1.10 Connector..... SMA Plug Reverse

### 2. Physical Properties :

- 2.1 Antenna Cover..... TPE
- 2.2 Antenna Base..... PC
- 2.3 Antenna Base..... PBT
- 2.4 Operating Temp. .... -10°C ~ +60°C
- 2.5 Storage Temp. .... -10°C ~ +70°C
- 2.6 Color ..... Black



REV	DATE	DESCRIPTION
X1	4/13-2007	New Issue

NO	DESCRIPTION	QTY	REMARK
6	Cable	RG-178 ; Translucent Brown ; 50 Ω	1
5	Connector	SMA Straight Plug/Reverse	1
4	Rivet	POM ; Black	1
3	Antenna Base	PBT ; Color:Black	1
2	Antenna Base	PC ; Color:Black	1
1	Antenna Cover	TPE ; Color:Black	1

XX	15	APPROVED	WMS	CUSTOMER:	Kiss Technology
X	43.0	CHECKED	10.20	PART NO :	
.X	41.0			PARTNAME:	RF Antenna Assembly
.XX	90.5		蔡志明	W.Y PNO :	C1046-510003-A
.XXX	40.1	DRAWING		REV	UNIT FILE :
				X1	mm SHEET: 1/1

**M.gear** Wha Yu Group

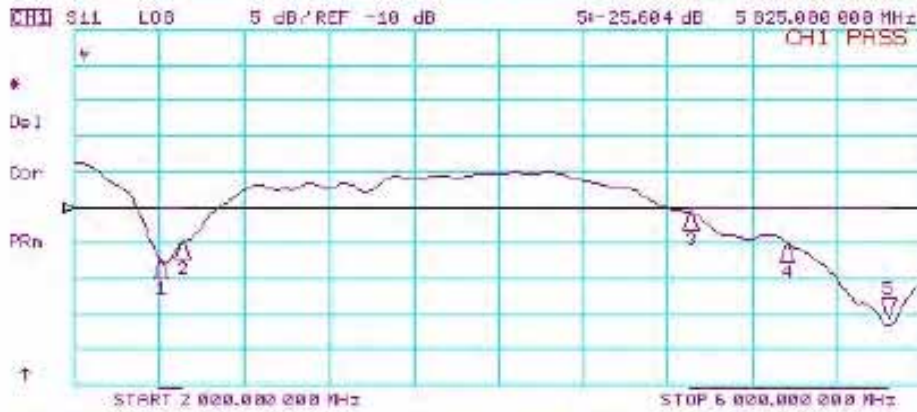
THIS DRAWING AND ITS INHERANT DESIGN CONCEPTS ARE THE PROPERTY OF WHA YU AND AS SUCH MAY NOT BE COPIED, REPRODUCED, OR GIVEN TO THIRD PARTIES WITHOUT THE WRITTEN CONSENT OF WHA YU.

CUSTOMER'S SIGNATURE

## RF Antenna Assembly

P/No.C1046-510003- SSR-71049 Spec:2.4~2.5GHz&4.9~5.825GHz

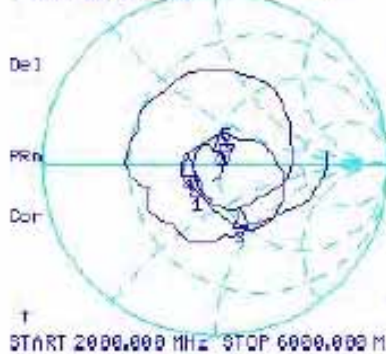
31 Jan 2003 10:47:26



CH1 Markers

- 1: -17.357 dB  
2.40000 GHz
- 2: -14.702 dB  
2.50000 GHz
- 3: -10.566 dB  
4.90000 GHz
- 4: -15.071 dB  
5.05000 GHz

CH2 S11 1.0 FS S=55.469 d -205.08 n 133.23 pF 5.825.000 000 MHz



CH2 Markers

- 1: 38.714 o  
-5.1899 o  
2.40000 GHz
- 2: 40.523 o  
18.385 o  
2.50000 GHz
- 3: 54.630 o  
-32.123 o  
4.90000 GHz
- 4: 35.268 o  
3.0039 o  
5.35000 GHz

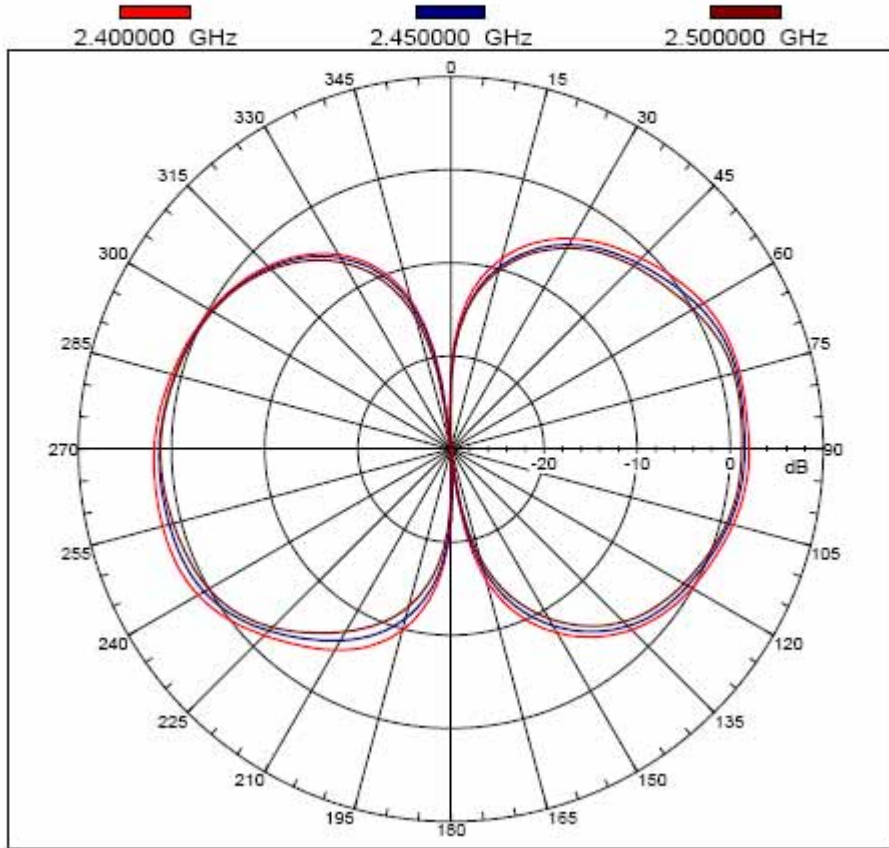
CH4 SWR 500 n / REF 1.92 S11 S=1.1107 5.825.000 000 MHz



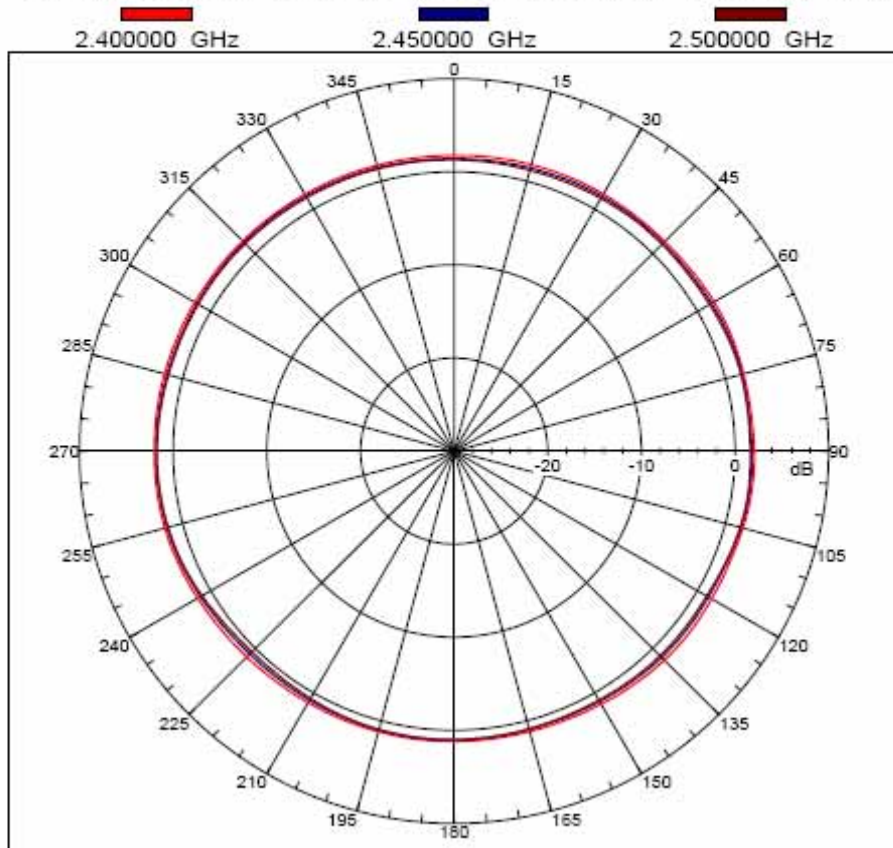
CH4 Markers

- 1: 1.3135  
2.40000 GHz
- 2: 1.4511  
2.50000 GHz
- 3: 1.8420  
4.90000 GHz
- 4: 1.4265  
5.35000 GHz

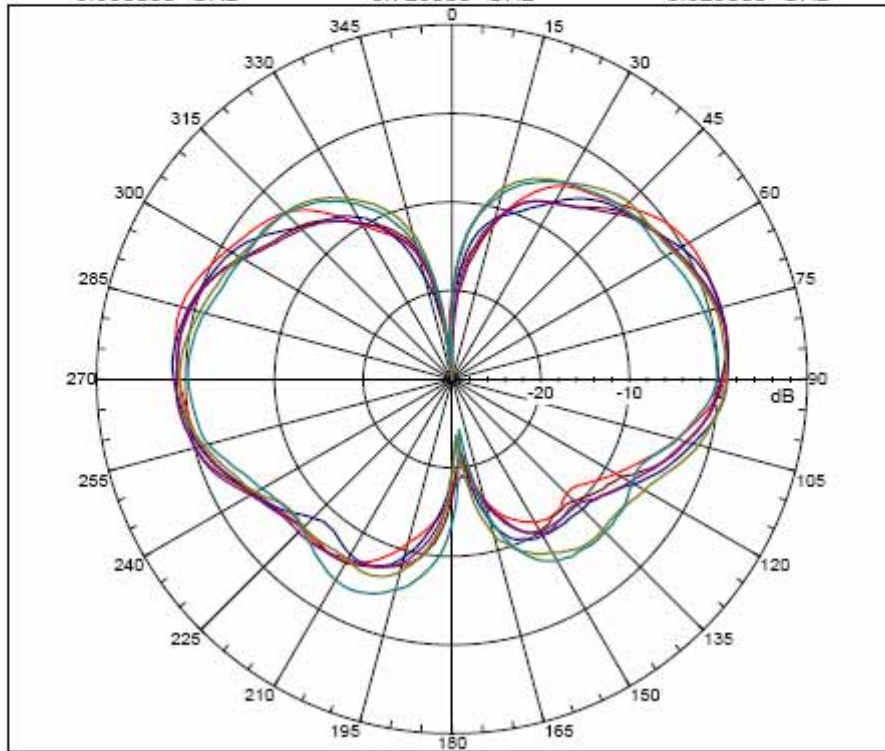
Far-field amplitude of C1046-510003-A SSR-71049 H E-PLANE.nsi



Far-field amplitude of C1046-510003-A SSR-71049 V H-PLANE.nsi



Far-field amplitude of C1046-510003-A SSR-71049 H E-PLANE.nsi





Far-field amplitude of C1046-510003-A SSR-71049 V H-PLANE.nsi

4.900000 GHz      5.150000 GHz      5.250000 GHz  
5.350000 GHz      5.725000 GHz      5.825000 GHz

