

**LINKSYS**<sup>®</sup>  
A Division of Cisco Systems, Inc.



# Wireless-G

**VoIP**  
Voice

IP Phone

User Guide

Model No. **WIP310**



## Copyright and Trademarks

Specifications are subject to change without notice. Linksys is a registered trademark or trademark of Cisco Systems, Inc. and/or its affiliates in the U.S. and certain other countries. Copyright © 2006 Cisco Systems, Inc. All rights reserved. Other brands and product names are trademarks or registered trademarks of their respective holders.



**Warning:** This product contains chemicals, including lead, known to the State of California to cause cancer, and birth defects or other reproductive harm. ***Wash hands after handling.***

## How to Use this Guide

This User Guide has been designed to make understanding networking with the Wireless-G IP Phone easier than ever. Look for the following items when reading this User Guide:



This exclamation point means there is a caution or warning and is something that could damage your property or IP Phone.



This question mark provides you with a reminder about something you might need to do while using the IP Phone.



This checkmark means there is a note of interest and is something you should pay special attention to while using the IP Phone.

# Table of Contents

<b>Chapter 1: Introduction</b>	<b>1</b>
Welcome	1
What's in This User Guide?	2
<b>Chapter 2: Getting to Know the Wireless-G IP Phone</b>	<b>3</b>
The Bottom Panel	3
The Front Panel	4
The Side Panel	5
The Back Panel	6
<b>Chapter 3: Installing and Using the Wireless-G IP Phone</b>	<b>7</b>
Overview	7
Charging the IP Phone's Battery	8
Setting up the Wireless-G IP Phone	9
Using the Wireless-G IP Phone	16
<b>Chapter 4: Configuring the Wireless-G IP Phone</b>	<b>17</b>
Home Screen	17
Status	18
Main Menu	18
Phonebook	18
Call Log	19
E-mail	20
Speed Dial	22
Profile	22
Settings	28
Tools	33
<b>Chapter 5: Using the Web-Based Utility</b>	<b>35</b>
Overview	35
How to access the web-based utility	35

## Wireless-G IP Phone

Phonebook	37
E-mail	38
Network Profile	39
SIP	41
Settings	42
Upload	45
Upgrade	46
Password	47
Reboot	47
<b>Appendix A: Troubleshooting</b>	<b>49</b>
Common Problems and Solutions	49
Frequently Asked Questions	54
<b>Appendix B: Glossary</b>	<b>55</b>
<b>Appendix C: Specifications</b>	<b>59</b>
<b>Appendix D: Warranty Information</b>	<b>61</b>
<b>Appendix E: Regulatory Information</b>	<b>63</b>
<b>Appendix F: Contact Information</b>	<b>77</b>

# List of Figures

Figure 3-1: Enter Phone Password9

Figure 3-2: Profile menu9

Figure 3-3: Profile menu - SIP Account10

Figure 3-4: SIP Account menu - Edit10

Figure 3-5: Edit SIP Account Settings10

Figure 3-6: Edit SIP Account - Advanced10

Figure 3-7: Advanced menu11

Figure 3-8: Profile menu11

Figure 3-9: Profile menu - Network Profile11

Figure 3-10: Profile - Network Profile12

Figure 3-11: Edit Network Security12

Figure 3-12: Edit Network Security - Wireless Settings12

Figure 3-13: ESSID menu - Site Survey12

Figure 3-14: ESSID menu - New ESSID13

Figure 3-15: Wireless Settings menu13

Figure 3-16: Wireless - Security13

Figure 3-17: Security menu14

Figure 3-18: Edit Network Profile menu14

Figure 3-19: Edit menu - Account Choice14

Figure 3-20: Select default SIP Account15

Figure 3-21: Account Reg. - On15

Figure 3-22: Profile Options - Auto Detect15

Figure 3-23: Auto Detect - On15

Figure 3-24: Home screen15

Figure 5-1: Wireless Network Status36

Figure 5-2: Phonebook List37

Figure 5-3: Phonebook Edit37

Figure 5-4: E-mail Account List38

Figure 5-5: Configure E-mail Account38

Figure 5-6: Network Profile List39

Figure 5-7: Wireless Network Settings40

Figure 5-8: SIP Account List41

Figure 5-9: SIP Setting41

Figure 5-10: Settings42

Figure 5-11: Upload45

Figure 5-12: Upgrade46

Figure 5-13: Password47

Figure 5-14: Reboot47

# Chapter 1: Introduction

## Welcome

Thank you for choosing the Linksys Wireless-G IP Phone. Whether you are at home or in your office, this phone lets you use your broadband connection to make phone calls.

How does the IP Phone do this? It connects to your wireless router or access point to receive telephone service through your cable or DSL Internet connection.

But what does all of this mean? Networks are useful tools for sharing Internet access and computer resources and making voice calls using your high-speed Internet connection. You'll be able to make phone calls using the account you set up with your Internet phone service provider while surfing the Internet on your computer. So, networks not only are useful in homes and offices, but also can be fun.

Use the instructions in this User Guide to help you set up and configure the IP Phone after you have created an account with your Internet phone service provider. These instructions should be all you need to get the most out of the Wireless-G IP Phone.



**Note:** For information about your Internet phone service, refer to the materials provided by your Internet phone service provider.

## What's in This User Guide?

This guide covers installing, configuring, and troubleshooting the Wireless-G IP Phone.

- **Chapter 1: Introduction**  
Describes the IP Phone's applications and this User Guide.
- **Chapter 2: Getting to Know the Wireless-G IP Phone**  
Describes the physical features of the IP Phone.
- **Chapter 3: Installing and Using the Wireless-G IP Phone**  
Explains how to install and use the IP Phone.
- **Chapter 4: Configuring the Wireless-G IP Phone**  
Discusses how to configure the IP Phone's settings.
- **Chapter 5: Using the Web-Based Utility**  
Explains how to configure the IP-Phone using the Web-Based Utility.
- **Appendix A: Troubleshooting**  
Describes potential problems and solutions, as well as frequently asked questions, regarding use of the IP Phone.
- **Appendix B: Glossary**  
Gives a brief glossary of terms frequently used in networking.
- **Appendix C: Specifications**  
Provides technical specifications for the IP Phone.
- **Appendix D: Warranty Information**  
Provides warranty information for the IP Phone.
- **Appendix E: Regulatory Information**  
Provides regulatory information regarding the IP Phone.
- **Appendix F: Contact Information**  
Provides contact information for a variety of Linksys resources, including Technical Support.

# Chapter 2: Getting to Know the Wireless-G IP Phone

## The Bottom Panel

The IP Phone's USB mini-B port is located on the bottom panel of the Phone. Use the USB mini-B port to connect the included AC adapter to the IP Phone to charge its battery.









USB mini-B Port



## The Front Panel

The IP Phone's buttons and their functions are described in the table below:

Icon	Button Name	Function
	<b>Soft Keys</b>	Press the Soft Keys to select menu items directly above the Soft Keys.
	<b>Navigation Button</b>	Move the Navigation button up or down to scroll through menus and settings. You can also press the Navigation button to select a highlighted menu item or setting.
	<b>Place/Receive Call Button</b>	Press the Place/Receive Call button to make or receive Internet phone calls.
	<b>Power/ End Call Button</b>	Press the Power/End Call button to end an Internet phone call, or press and hold the Power/End Call button for two seconds to Turn the Phone on or off. You can also press the Power/End Call button to quickly exit a menu and return to the Home screen.
	<b>Clear Button</b>	Press the Clear button to erase characters when you are entering information into the Phone. If you need to erase a large number of characters, press and hold the Clear button until all of the characters are erased.
	<b>Numeric Keypad</b>	Press the keys on the Numeric Keypad to enter letters and numbers in the Phone. When entering text, press the keys until the letter you want is displayed on the LCD screen. To switch from entering letters to numbers, press the left Soft Key. (To enter special characters, press the * [Star] or 1 keys until the character is displayed on the LCD screen.)



## The Side Panel

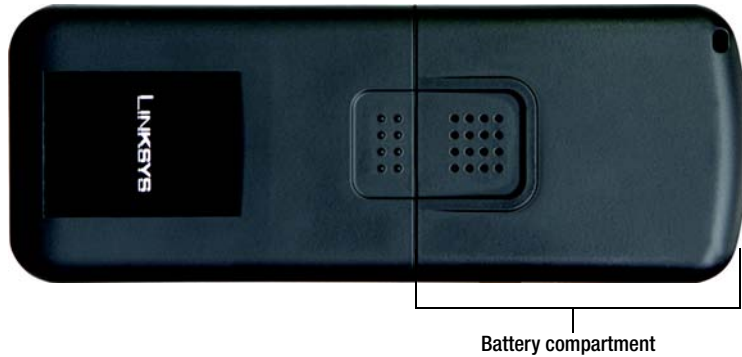
The IP Phone's Headset jack is located on the side panel of the Phone. Use it to connect a headset for hands-free operation.



Headset Jack

## The Back Panel

The IP Phone's battery compartment is located on the back panel of the IP Phone. For directions on how to insert the battery, refer to "Chapter 3: Installing and Using the Wireless-G IP Phone".



# Chapter 3: Installing and Using the Wireless-G IP Phone

## Overview

This chapter provides instructions for first-time installation and basic use of the IP Phone. Follow the steps below to get started. Once you have finished configuring the phone you will be able to make and receive Internet phone calls.

## Inserting and Charging the Phone's Battery

1. Remove the battery compartment cover by sliding it downwards.
2. Insert the battery with the metal contacts facing the contacts at the bottom of the battery compartment.
3. Replace the battery cover by sliding it upwards until it clicks into place.



Metal Contacts



Battery

## Charging the IP Phone's Battery

1. Connect the small end of the included AC power adapter to the USB mini-B port on the bottom of the IP Phone.



2. Plug the other end of the adapter into a standard electrical outlet.

You see a charging indicator on the LCD screen



**Note:** Allow the battery to charge for eight hours before initial use.

When the Battery charging indicator remains solid blue, the battery is fully charged and ready for use.

**When the battery is fully charged, proceed to “Setting up the Wireless-G IP Phone”.**

# Setting up the Wireless-G IP Phone

Before you begin, make sure you have an active Internet connection and your SIP account information provided by your Internet phone service provider.



**Note:** The Phone automatically dims and turns off the LCD display when the Phone is not in use. If this happens while you are configuring the Phone, press any key to turn the display back on and continue configuring the Phone.

1. Press the **Power** (receiver button on right-hand side) button to turn on the Phone.
2. You may need to enter your password. Use the keypad to enter the password (default password is **USER**).
3. When you are finished entering a password, press the **Navigation** button to save it.
  
4. If you do not need to enter a password, then press the **Menu** Soft Key.
5. Scroll to *Profile* and press the **Select** Soft Key to enter the profile configuration menu.



Figure 3-1: Enter Phone Password



Figure 3-2: Profile menu

6. Scroll to *SIP Account*, then press the **Select** Soft Key to enter the *SIP Account* menu.
7. Press the **Option** Soft Key, then press the **Select** Soft Key to edit the default SIP account



Figure 3-3: Profile menu - SIP Account



Figure 3-4: SIP Account menu - Edit

8. From the *Edit* menu, highlight each setting your service provider requires you to change, then press the **Select** Soft Key to change the setting. When you are finished changing a setting, press the **Navigation** button to save your changes.
9. If you need to change a setting that does not appear on the Edit screen, scroll to *Advanced*, then press the **Select** Soft Key to enter the Advanced menu.



Figure 3-5: Edit SIP Account Settings

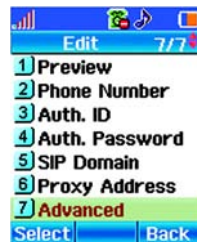


Figure 3-6: Edit SIP Account - Advanced

10. Highlight each setting your service provider requires you to change, then press the **Select** Soft Key to change the setting. When you are finished changing the setting, press the **Navigation** button to save your changes.
11. When you are finished making changes in the advanced settings menu, press the **Back** Soft Key until you return to the *Profile* menu.
12. Highlight *Network Profile*, then press the **Select** Soft key to enter the Network Profile menu.

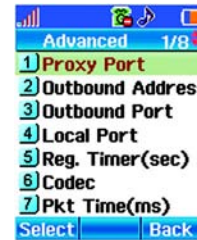


Figure 3-7: Advanced menu



Figure 3-8: Profile menu

13. Highlight the network profile that matches the type of security you are using for your wireless network and press the **Option** Soft Key to enter the Profile Options menu. If you do not have security enabled on your wireless network, highlight *OPEN*.



**Note:** The profiles listed are default network profiles and can be deleted or renamed. If the security you are using for your network is not listed, then you can edit any of these profiles to match your network's policy.



Figure 3-9: Profile menu - Network Profile



14. Press the **Select** Soft Key to edit the network profile.
15. Highlight *Wireless Settings*, then press the **Select** Soft Key to enter the Wireless Settings menu.



Figure 3-10: Profile - Network Profile



Figure 3-11: Edit Network Security

16. Highlight *ESSID*, then press the **Select** Soft Key to enter the ESSID menu.
17. Highlight *Site Survey*, then press the **Select** Soft Key to scan for your wireless network.

You see a list of wireless networks in range of the IP Phone. Highlight your wireless network's ESSID in the list, then press the **Navigation** button to select it.



Figure 3-12: Edit Network Security - Wireless Settings



Figure 3-13: ESSID menu - Site Survey

18. If you do not see your wireless network's ESSID in the list, your wireless network may not be set to broadcast its ESSID.

To enter the ESSID manually, press the **Back** Soft Key to return to the *ESSID* menu, highlight **New ESSID**, then press the **Navigation** button to edit the ESSID.

When you are finished entering the ESSID, press the **Navigation** button to save it.



Figure 3-14: ESSID menu - New ESSID

- 19. Press the **Back** Soft Key until you return to the *Wireless Settings* menu.
- 20. Highlight *Security*, then press the **Navigation** button to enter the Security menu.



Figure 3-15: Wireless Settings menu



Figure 3-16: Wireless - Security

21. Highlight the type of security you have enabled on your wireless network and press the **Navigation** button to select it. Then change the settings to match your wireless network.

If you do not have security enabled on your wireless network, select *OPEN*.



**Note:** You can view the security settings for your network by connecting to the router's configuration utility. If you are unsure about your security policy, contact your network administrator.



Figure 3-17: Security menu

22. When you are finished reconfiguring the wireless security settings, press the **Back** Soft Key until you return to the *Edit* menu.
23. Highlight *Account Choice* and press the **Select** Soft Key to enter the Account Choice menu.

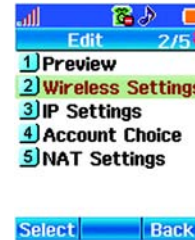


Figure 3-18: Edit Network Profile menu



Figure 3-19: Edit menu - Account Choice

- 24. Press the **Navigation** button to assign the default SIP account to the current network profile.
- 25. Highlight *On*, then press the **Navigation** button to activate the SIP Account.
- 26. Press the **Back** Soft Key twice so that the *Profile Options* menu displays. Scroll down to *Auto Detect* and press the **Select** Soft Key.



Figure 3-20: Select default SIP Account



Figure 3-21: Account Reg. - On



Figure 3-22: Profile Options - Auto Detect

- 27. Select *On* and press the **Navigation** key. Auto Detect must be turned on in order for the phone to use the network profile.
- 28. Press the **Back** Soft Key until you return to the Phone's home screen.
- 29. If you are successfully connected to the network, the ESSID displays on the home screen. For example, Linksys1, is the ESSID in Figure 3-24.

**Installation is complete. Proceed to the next section, "Using the Wireless-G IP Phone."**

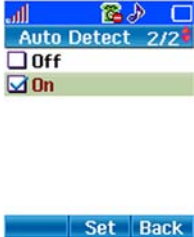


Figure 3-23: Auto Detect - On



Figure 3-24: Home screen

## Using the Wireless-G IP Phone

To make a call, enter the phone number you want to dial, then press the **Call** button. To answer an incoming call, press the **Accept** Soft Key or the **Call** button. To disconnect from a call, press the **End Call** button. When you're on a phone call, you can select the following options:

<b>Hold</b>	Press the <b>Hold</b> Soft Key to place a call on hold. To return to the call, press the <b>Resume</b> Soft Key.
<b>Mute</b>	Press the <b>Navigation</b> button to mute the Phone's microphone. To unmute the Phone's microphone, press the <b>Navigation</b> button again.
<b>OnHook</b>	Press the <b>OnHook</b> Soft Key to end a call.
<b>Volume</b>	Move the <b>Navigation</b> button up or down to adjust the call volume, then press the <b>Navigation</b> button to save the new volume level or the <b>Back</b> Soft Key to cancel.
<b>End</b>	To disconnect from a call, press the <b>End</b> Soft Key.

**For additional information about your Wireless-G IP Phone, proceed to “Chapter 4: Configuring the Wireless-G IP Phone.”**

# Chapter 4: Configuring the Wireless-G IP Phone

## Home Screen



**Note:** The IP Phone may be configured more easily using your PC. Please see Chapter 5: Using the Web-Based Utility for more information.

The home screen displays a variety of information about the IP Phone. The table below displays a list of icons and definitions that appear on the home screen.

Icon	Description
	Signal Strength: Indicates the signal strength of the access point you're IP Phone is connected to.
	Message: Indicates that you have received a new message.
	In Call/Call Forward: Indicates that you are on a call or forwarding a call.
	Network Encryption: Indicates that you are connected to an access point that has encryption enabled.
	SIP Registered/Not Registered: Indicates the status of the IP Phone's connection to a SIP server.
	Ring Mode (Silent/Ring/Vibrate/Ring+Vibrate): Indicates the ring mode that's currently enabled.
	Alarm: Indicates that the alarm you set is going off.
	Battery Level: Indicates the amount of battery power you have remaining.

## Status

Press the **Status** Soft Key on the Phone's home screen to access the current settings of the IP Phone.

Option	Description
Wireless	The wireless settings used by the Phone including <ul style="list-style-type: none"> <li>• <b>BSSID:</b> The MAC address of the access point that the phone is connected to.</li> <li>• <b>IP Address:</b> The address used to identify the Phone on the wireless network.</li> <li>• <b>MAC Address:</b> The unique address that a manufacturer assigns to the phone.</li> </ul>
SIP Phone	The service provider settings for the Phone including <ul style="list-style-type: none"> <li>• <b>SIP Server:</b> The SIP Server address that the Phone is connected to.</li> <li>• <b>User Agent:</b> The name that the phone uses to identify itself with the SIP Server.</li> <li>• <b>Status:</b> Displays as "Registered" when the Phone is registered with an Internet Telephone Service Provider (ITSP).</li> </ul>

## Main Menu

Press the **Menu** Soft Key on the Phone's home screen to enter the Main menu. Refer to the sections below for information on the options available in the Main Menu.

## Phonebook

The Phonebook can store and display up to 200 contacts. To view a contact's information, highlight the contact, then press the **Navigation** button. To call the contact, press the **Call** button, then press the **Call** Soft Key. Refer to the table below for a list of options available in the Phonebook:

Option	Description
Search	Search for a contact by name.
Edit	Edit the currently selected contact.
Delete	Delete the currently selected contact.
New	Add a new contact.

## Call Log

The IP Phone keeps a list of the calls you've recently missed, dialed, and received. Refer to the table below for a list of options available in the Call Log:

Option	Description
Missed Calls	Displays a list of calls you've recently missed.
Dialed Calls	Displays a list of calls you've recently dialed.
Received Calls	Displays a list of calls you've recently received.
Delete All	Clears all call lists.

To get more information about a call in your call log, highlight the call, then press the **Navigation** button to display date and time information for the call. Refer to the table below for a list of options available in the Missed Calls, Dialed Calls, and Received Calls menus:

Option	Description
Save	Add additional information about a caller and save the contact information to your Phonebook.
Del Record	Delete the current caller from the call log.
Del All Missed/ Dialed/Received	Clear all of the calls in the call list you're viewing.



## E-mail

The IP Phone's built-in e-mail client allows you to send and receive messages using your POP3 e-mail account.



**Note:** Not all e-mail services support POP3. Contact your e-mail service provider for more information about POP3 settings and support.

### Configuring Your Account

1. If necessary, press the **Menu** Soft Key, scroll to *E-mail*, then press the **Navigation** button to enter the E-mail menu.  
If an e-mail account has not been configured, you see the *New* account menu.
2. Enter the information provided by your e-mail service.
3. When you have finished configuring your e-mail account information, press the **Back** Soft Key until you see the *Option* menu.
4. Scroll to *Activate*, press the **Navigation** button, then press the **OK** Soft Key to activate the e-mail account. When an e-mail account is already configured, access the *Option* menu by selecting *Account Settings* from the *E-mail* main menu. Then select the account and select the **Option** Soft Key.
5. Press the **Back** Soft Key until you see the *E-mail* menu.

### Using the E-mail Client

Refer to the table below for a list of options available in the E-mail menu:

Option	Description
Write New	Compose a new e-mail message. Press the <b>Navigation</b> button to create a new e-mail message, then enter a <b>Subject</b> , the <b>Recipients</b> , and <b>Content</b> of the message. When you are finished editing your e-mail, select <b>Send Mail</b> or <b>Save To Draft</b> to save the message to the draft folder.

Option	Description
Receive	Receive new e-mail messages. To save power, the phone only checks e-mail messages when you use the Receive option in the e-mail client.
Inbox	<p>Access e-mail messages you've received. To read a message, highlight the message you want to read, then press the <b>Navigation</b> button to view it. When you are viewing a message, you can press the <b>Option</b> Soft Key to select the following options:</p> <ul style="list-style-type: none"><li>• <b>Reply:</b> Allows you to quickly reply to e-mail messages.</li><li>• <b>Reply with Log:</b> Allows you to quickly reply to e-mail messages with a history of the original E-mail.</li><li>• <b>Forward:</b> Allows you to quickly edit and send an e-mail to other contacts or save it as a draft.</li><li>• <b>Delete:</b> Allows you to delete the current message from your Inbox.</li><li>• <b>Clear Inbox:</b> Allows you to delete all of the e-mail messages in your Inbox.</li></ul>
Outbox	<p>View e-mail messages that you've sent. To view information about when an e-mail was sent, highlight the e-mail you want information about, then press the <b>Navigation</b> button. When you are viewing a sent e-mail message, you can press the <b>Option</b> Soft Key to select the following options:</p> <ul style="list-style-type: none"><li>• <b>Edit:</b> Allows you to quickly edit a sent message and send it to other contacts or save it as a draft.</li><li>• <b>Delete:</b> Allows you to delete the current message from your Outbox.</li><li>• <b>Clear Outbox:</b> Allows you to delete all of the e-mail messages in your Outbox.</li></ul>
Draft	<p>View e-mail messages that you've saved as drafts. To view a draft, highlight the e-mail you want to view, then press the <b>Navigation</b> button. When you are viewing a draft, you can press the <b>Option</b> Soft Key to select the following options:</p> <p><b>Edit:</b> Allows you to quickly edit a sent message and send it to other contacts or save it as a draft.</p> <p><b>Delete:</b> Allows you to delete the current message from your Draft folder.</p> <p><b>Clear Draft:</b> Allows you to delete all of the messages in your Draft folder.</p>
Account Settings	Allows you to activate, edit, and delete your e-mail account settings.

## Speed Dial

The Speed Dial menu allows you to assign up to nine phone numbers you frequently call to the number keys on the phone. Follow the steps below to assign a contact to your Speed Dial list.

1. From the *Home* screen, press the **Menu** Soft Key, scroll to *Speed Dial*, then press the **Navigation** button to enter the Speed Dial menu.
2. Highlight the number you would like to assign a contact's phone number to.
3. Press the **Option** Soft Key to view the contacts in your Phonebook.
4. Highlight the contact you want to assign to the speed dial location, then press the **Navigation** button.

If the contact you selected has more than one phone number stored in your Phonebook, you see another screen with a list of numbers for that contact. Highlight the number you want to assign to the speed dial location, then press the **Navigation** button.

5. Press the **Back** Soft Key until you return to the main *Speed Dial* menu.

## Profile

The Profile menu lets you make changes to your SIP accounts, network profiles, roaming options, and profile password. From this menu, you can also access SecureEasySetup. Refer to the sections below for the options available in the Profile menu. Some options are only available if you are a service provider or an administrator to the phone.

### Network Profile

The Network Profile menu lets you assign up to six wireless access points for your IP Phone to connect to. To view the details of a profile, press the **Navigation** button. To edit a profile, highlight the network profile you would like to edit, then press the **Option** Soft Key. Refer to the table below for a list of options available in the *Profile Options* menu:

Option	Description
Edit	Edit the current network profile.
Rename	Change the current network profile's name.
Delete	Delete the current network profile.
Auto Detect	Enable or disable the current network profile.
Move	Move the current network profile up or down in the network profile list. The IP phone will try to connect to all of the access points, in the order they appear in the network profile list, until it is able to make a connection.

### Editing a Network Profile

The Edit menu allows you to edit the currently selected network profile. Refer to the table below for a list of options available in the Edit menu:

Option	Description
Preview	View a summary of the current network profile.
Wireless Settings	<p>Edit wireless network settings. Highlight <i>Wireless Settings</i>, then press the <b>Select</b> Soft Key to select the following options:</p> <ul style="list-style-type: none"><li>• <b>ESSID:</b> Lets you enter the wireless network's ESSID or perform a site survey to view wireless networks in range of the IP Phone.</li><li>• <b>Data Rate:</b> Lets you specify the data rate of the wireless network. If you don't know the data rate, select <i>Auto</i>.</li><li>• <b>Security:</b> Lets you configure the wireless security settings of the Phone.</li></ul>

Option	Description
IP Settings	Select from the following IP modes: <ul style="list-style-type: none"> <li>• <b>Fixed IP:</b> Allows you to manually enter IP settings for the IP Phone.</li> <li>• <b>DHCP:</b> Allows you to use DHCP to acquire IP settings for the IP Phone.</li> <li>• <b>PPPoE:</b> Allows you to use PPPoE to acquire IP settings for the IP Phone.</li> </ul>
Account Choice	Assign a SIP account to a network profile.
NAT Settings	Set STUN server options. Press the <b>Select</b> Soft Key to select from the following options: <ul style="list-style-type: none"> <li>• <b>NAT Solution:</b> Allows you to enable or disable STUN services.</li> <li>• <b>NAT Timer:</b> Allows you to change the interval of time the phone waits between communication sessions with the STUN server.</li> <li>• <b>STUN Address:</b> Allows you to enter the address of the STUN server you want the phone to use.</li> <li>• <b>STUN Port:</b> Allows you to enter the network port of the STUN.</li> </ul>

## SIP Account (Admin only)

The SIP Account menu lets you create up to six SIP accounts to use with the IP Phone. To view the details of an account, press the **Navigation** button. To edit a SIP account, highlight the account you would like to edit, press the **Option** Soft Key, then press the **Select** Soft Key to edit the account. Refer to the table below for a list of options available in the *Edit* menu:

Option	Description
Preview	View a summary of the current SIP account.
Phone Number	Enter your Internet phone number.
Auth. ID	Enter your Internet phone service account's authorization id.
Auth. Password	Enter your Internet phone service account's authorization password.
SIP Domain	Enter your Internet phone service provider's SIP domain.

Option	Description
Proxy Address	Enter the address of your Internet phone service provider's SIP proxy server.
Advanced	<p>Make advanced changes to the SIP account. Press the <b>Select</b> Soft Key to select from the following advanced options:</p> <ul style="list-style-type: none"><li>• <b>Proxy Port:</b> Allows you to enter the network port of your Internet phone service provider's proxy server.</li><li>• <b>Outbound Address:</b> Allows you to enter the address of your Internet phone service provider's outbound server.</li><li>• <b>Outbound Port:</b> Allows you to enter the network port of your Internet phone service's outbound server.</li><li>• <b>Local Port:</b> Allows you to enter the local network port the IP Phone uses.</li><li>• <b>Reg. Timer (sec):</b> Allows you to change the amount of time the IP Phone waits between registration attempts with the SIP server.</li><li>• <b>Codec:</b> Allows you to select Auto, G.711a, G.729a, or G.711u as the codec the phone uses for encoding and decoding audio.</li><li>• <b>Pkt Time(ms):</b> Allows you to change the audio packet size.</li><li>• <b>OutBand DTMF:</b> Allows you to enable or disable out-of-band DTMF.</li></ul>

To rename a SIP account, highlight the account you would like to rename, press the **Option** Soft Key, highlight *Rename*, then press the **Select** Soft Key to rename the SIP account. To delete a SIP account, highlight the account you would like to delete, press the **Option** Soft Key, highlight *Delete*, press the **Select** Soft Key, then press the **OK** Soft Key to delete the SIP account.

### Roaming

The Roaming menu allows you to set specific parameters for roaming from one wireless access point to another. Refer to table below for a list of options available in the Roaming menu:

Option	Description
Roam Metric	Specify an RSSI (Received Signal Strength Indication) value to begin a roaming scan.
Roam Delta	Specify the RSSI threshold for target access points to join.
NProbes	Specify the number of probes per channel to send when scanning.
Active Time	Specify the amount of time spent on each channel when scanning.
Home Time	Specify the amount of time spent on the home channel between scans.

## Auto Provisioning (Admin only)

Service Providers use the Auto Provisioning feature to automatically configure and update their customer's IP Phones remotely and without involving the user. If your Internet phone service provider uses Auto Provisioning, then enter settings in this menu.

Option	Description
Resync on Reset	If set to <i>On</i> , the phone resyncs with the SIP configuration file upon startup.
Resync Periodic	Specifies the time in seconds that the phone waits before sending the next resync request. Accepted values are from 200 to 604800 seconds. You can disable this option by setting it to <i>0</i> .
Random Delay	Specifies the amount of random time that will be added to the resync time period. This delay is used to avoid simultaneous requests to a provisioning server. Accepted values are from 0 to 300.
File Address	Specifies the URL of the provisioning server. Included in front of the URL is the password that was used to encrypt the file. For example: \$M http://192.168.1.1/settings.xml where \$M is a variable that represents the phone's MAC address.
GPP	General Purpose Profile (GPP) defines global variables used by the XML configuration file.
Encryption Type	Encryption types include RC4 and DEC-CBC-256 that are used to encrypt the XML file.

## Secure Setup

The Secure Setup menu allows you to configure your IP Phone's wireless network settings with the push of a button. If you have a Linksys wireless router or access point that supports SecureEasySetup, you can use the Secure Setup feature to quickly and easily configure your IP Phone's wireless network settings. Before you begin, locate the SecureEasySetup or Cisco logo button on the wireless router or access point, then proceed to step 1. If you need help finding the button on your wireless router or access point, refer to the on-screen User Guide included with the wireless router or access point.

1. Press the SecureEasySetup or Cisco logo button on the wireless router or access point.
2. When the SecureEasySetup or Cisco logo begins to flash, press the **Select** Soft Key, then press the **Yes** Soft Key run SecureEasySetup.



**Note:** You can also press and hold the **Clear** button to quickly access the Secure Setup feature from the IP Phone's home screen. When you see the *Run SES* message appear on the screen, press the **Yes** Soft Key.

3. When you see the *Save Configuration* message appear on the screen, press the **Save** Soft Key.
4. Select the Profile you would like to save the new wireless configuration settings to, then press the **Save** Soft Key.



## Settings

Use the Settings menu to make changes to select regional settings, set the date and time, and personalize your phone. Refer to the sections below for the options available in the Settings menu.

### Language

The Language menu allows you set the IP Phone's display language. To change the language, highlight the language you would like the phone to use, then press the **Navigation** button to save your setting.

### Clock

The Clock menu allows you to set the IP Phone's time and date settings. Refer to the table below for a list of options available in the Clock menu.

Option	Description
Time	Set the time displayed on the IP Phone's home screen.
Date	Set the date displayed on the IP Phone's home screen.
Time Format	Set the time's display format to 12- or 24-Hour format.
Time Zone	Set your local timezone.
Date Format	Set the date display format.
Daylight Savings	Enable or disable automatic Daylight Savings time adjustment.
Network Time	Enable or disable the phone from updating the time from an NTP server.

## Alarm Clock

The Alarm Clock allows you to set an alarm to go off at a specified time. You can also set the alarm to go off once, daily, or weekly. Refer to the table below for a list of options available in the Alarm Clock menu.

Option	Description
Alarm Time	Set the time you want the alarm to go off at.
Mode	Set the alarm to go off once, daily, or weekly.
Melody	Set what tune the alarm will make.

## Call Settings

The Call Settings menu allows you to change all call related settings on the IP Phone. Refer to the table below for a list of options available in the Call Settings menu.

Option	Description
Call Waiting	Enable or disable call waiting.
Call Forward	Make changes to call forwarding settings. Press the <b>Select</b> Soft Key to select from the following call forwarding options: <ul style="list-style-type: none"><li>• <b>Forward Number:</b> Allows you to enter a number to forward calls to.</li><li>• <b>Forward All:</b> Allows you to forward all calls.</li><li>• <b>No Answer:</b> Allows you to forward missed calls.</li><li>• <b>Busy:</b> Allows you to forward calls when your phone is busy.</li><li>• <b>Cancel All:</b> Allows you to cancel all call forwarding options.</li></ul>
Block Caller ID	Enable or disable caller id blocking.
Refuse Private	Block incoming calls from callers with a private caller id.

## Wireless-G IP Phone

Option	Description
Beep Notification	Enable or disable the Beep Notification feature. When this feature is enabled, the phone will beep every 50 seconds so that you can keep track of how long you've been on a call.
Hold Transfer	Select <i>SIP</i> or <i>DTMF Flash</i> as the method used for transferring calls.
Regional Tone	Set the Regional tone setting to <i>North America</i> or <i>Japan</i> .

## Speed Dial

The Speed Dial menu allows you to change the way the phone's speed dial function works. You can select *Disable* to disable speed dial, *Ask* to see a confirmation screen before the phone dials a contact, or *Dial* to immediately dial a contact.

## Sound Settings

The Sound Settings menu allows you to change the IP Phone's speaker volume, ringer settings, and warning tones. Refer to the table below for a list of options available in the Sound Setting menu.

Option	Description
Speaker Volume	Set the IP Phone's speaker volume.
Ring Tone	Set the IP Phone's ring tone and volume. Press the <b>Select</b> Soft Key to select from the following options. <i>Default Ring Tone</i> are melodies that came with the Phone. <i>Personal Melody</i> are tones you uploaded to the Phone using the web-based utility. <ul style="list-style-type: none"><li>• <b>Melody:</b> Allows you to set the IP Phone's ring tone.</li><li>• <b>Ring Volume:</b> Allows you to adjust the IP Phone's ringer volume.</li></ul>
Ring Mode	Set the IP Phone's ring mode to <i>Silent</i> , <i>Ring</i> , <i>Vibrate</i> , or <i>Ring + Vibrate</i> .
Warning Tone	Enable or disable the IP Phone's warning tones, such as low battery.
Open/Close Tone	Enables start and shutdown tones for the IP Phone.

## Display Settings

The Display Settings menu allows you to customize the IP Phone's display. Refer to the table below for a list of options available in the Display Settings menu.

Option	Description
Wallpaper	Change the picture displayed on the home screen. <i>Default Wallpaper</i> is wallpaper that came with the Phone. <i>Personal Wallpaper</i> is wallpaper you uploaded to the Phone using the web-based utility.
Greeting	Change the message displayed on the home screen.
LCD Off Time	Change the amount of time it takes for the IP Phone to turn off its LCD when the phone is not in use.
LCD Brightness	Change the brightness of the LCD screen.
Config. Tip	Enable or disable configuration tips.

## Keypad

The Keypad menu allows you to customize the IP Phone's keypad settings. Refer to the table below for a list of options available in the Keypad menu.

Option	Description
Keypad Lock	Lock the IP Phone's keypad. To unlock the keypad, press the <b>Left Soft Key</b> then press the * (Star) key.
Key Tone	Enable or disable the IP Phone's key tones.
Key Backlight	Enable or disable the IP Phone's key backlight.

## Personal Settings

The Personal Settings menu lets you view and delete the wallpapers and sounds that you have uploaded onto the Phone using the web-based utility. You may also view and delete the recordings you have saved using the Voice Recorder.

Option	Description
Wallpaper	Sets the background for your home screen.
Melody	Sets the sound for turning on and off the IP Phone.
Voice Recorder	Record sound and keep a list of your recordings. Press the Select Soft Key and select from the following options. <ul style="list-style-type: none"> <li>• <b>Record:</b> Highlight the <i>Record</i> selection and speak into the phone to record voice.</li> <li>• <b>Recording List:</b> Contains a list of all saved recordings. Replay the recording or press the <b>Option</b> Soft Key to view additional options for the recording.</li> </ul>

## Password Settings

You can select to password protect the IP Phone and change the Phone's password. The default password is **USER**.

Option	Description
Passwd Protect	To protect the Phone with a password, highlight <i>On</i> and press the <b>Navigation</b> button.
Passwd Change	To change the password, enter the old password first (default is <b>USER</b> ) and then the new password.

# Tools

Use the Tools menu to view information about your IP Phone and network status.

Option	Description
Signal Quality	Provides wireless network information including signal quality and data rate.
Site Survey	Displays a list of access points that are available for your phone to connect to. Select the <b>Navigation</b> button to access status information about each access point. Select the <b>Renew</b> Soft Key to update the survey results.
Statistics	Displays the Phone's network usage statistics.
Battery	View the Phone's battery status.
Ping	Lets you enter an IP address and ping another device.
Version	Displays information about the Phone, including firmware version, when it was built, and how much memory it contains.
Upgrade	Upgrade the IP Phone's firmware.
Back to Default	Reset all of the Phone's settings back to their factory defaults.
Restart	Soft reset of the Phone.



# Chapter 5: Using the Web-Based Utility

## Overview

For your convenience, you can use the web-based utility on your PC to view, change, or edit the most commonly used features of your IP Phone.



**Note:** Your phone must be set to its home screen to use the web-based utility. You can make choices from either the phone or the PC, but not both at the same time. If your phone is not on the home screen, the message: *Phone Cfg file locked by: xxxxxx* will display on the PC when you select an option.

## How to access the web-based utility

1. To start, you will need the IP phone's IP address. From the phone's home screen press the Status soft key. The next screen will display the Phone Status. Item 2 is the IP address. Note the address. If you use a Static IP, the address will stay the same. If you use DHCP, the IP address may change every time you turn on the phone.
2. On a computer that is connected to the same network as the phone, launch Internet Explorer. In the *Address* field, enter **http://<IP address>** where the IP address is the WiFi Phone's IP address that you obtained in step 1. Press **Enter**.



**Note:** To access the web-based utility, your phone and computer must be on the same network.



## Wireless-G IP Phone

3. You will see the Wi-Fi Phone login screen. Enter the IP Phone's Username and Password. Click **Submit**. You will log in to the Status screen and can select any of the tabs to add or change phone setting information.

The default User Name is **admin** and the Admin password is **admin**, but may change if you have an ITSP.



**Note:** To make a selection or confirm an entry, you must click on the option at the bottom of the screen. Pressing the Enter key will not confirm your selection(s).

## Status

Click the **Status** tab to view the IP phone's IP address, Mac address, ESSID and BSSID.



**Figure 5-1: Wireless Network Status**

# Phonebook

The Phonebook stores and displays up to 200 contacts.

## Phonebook List

Access a list of all of your contacts and numbers. To edit a contact, click the contact's Name. To create a new phonebook entry, click **New**. Click **Clear All** to clear all phone entries from the Phone.

## Phonebook Edit

When you click either the contact's name or the **New** button from the Phonebook List, The Phonebook Edit screen displays. Enter the following optional information for your contact.

Option	Description
Name	The contact's name.
E-mail	The e-mail address for the contact.
Ring Tone	Stores a specific ring tone for the contact.
Number 1-5	Stores up to five different phone numbers for the contact.
Speed Dial 1-5	Sets speed dial numbers for each number. The Phone holds 9 speed dial numbers.
Type Choice 1-5	Sets the type for either Generic, Mobile, Office, Home, or FAX for each number.

Click **Save Settings** to save the information. You can also click **Delete** to delete the contact or **Cancel Settings** to cancel all settings that you have not yet saved. If your IP phone is on, the new contact information displays immediately and can be edited either in the Phone or on your PC.

After you select **Save Settings**, a message that reads *Settings Saved Successfully* appears at the top of the screen. Click the **Phonebook** tab to add another entry.



Figure 5-2: Phonebook List



Figure 5-3: Phonebook Edit

The Phone's built-in e-mail client lets you send and receive messages using your POP3 account.

## E-mail Account List

You can create up to five different e-mail accounts. From the list, click **Configure** to set up a new account. You can also remove or activate an existing e-mail account.

### Account Setting

Enter an account name, your name, and the e-mail address for the new account.

### POP3 Setting

Enter your POP3 settings including the incoming server address, port, user id, and password. You can normally discover these settings from the specific e-mail program's instructions.

### SMTP Setting

Enter the outgoing server address, port, user id, and password.

### Advanced Setting

Enter your reply address and signature information (optional). Click **Reserve Mail** to keep a copy of your new mail on the remote POP3 server.

Click **Save Settings** to add this entry to your e-mail account list. Click **Cancel Settings** to cancel information not already saved. Click the **E-mail** tab to return to the main *E-mail* screen.



Figure 5-4: E-mail Account List



Figure 5-5: Configure E-mail Account

# Network Profile

The Phone can connect to up to six wireless routers (or access points). You need to obtain the connection settings from the router to configure the settings in this section.

## Network Profile List

The Network Profile List displays up to six wireless access points for the Phone to connect to, including the active account. Only one account at a time can be active. Use the green arrow to move an option down the list, or the blue arrow to move an option upwards. To confirm the change, click **Go**.



**Note:** If you use the web-based utility to change to a new network, the Phone will switch to the new network. You must log in to the web-based utility again with a computer on the new network.

To configure the access point, click **Configure** in the corresponding access point's row and the *Wireless Network Settings* screen opens.



Figure 5-6: Network Profile List

## Wireless Network Settings

Once you click **Configure**, the Wireless Network Settings option displays. Use the settings from the router you are using to continue this section. Enter a profile name, ESSID, and Data Rate of the router.

### IP Settings

Choices are DHCP, Fixed IP, or PPPoE.

### NAT Settings

For the NAT Settings you can Disable the NAT Solution or select STUN server options.

### Security Settings

You can select the type of Security Settings you want to use, including OPEN, or one of several WEP or WPA options.

### Certification Settings

You can upload the Certification Settings, including CA Cert., User Cert., and Private Key.

### SIP Account Settings

SIP Account Settings can be selected on this screen. Click **Go** to configure or remove these accounts.

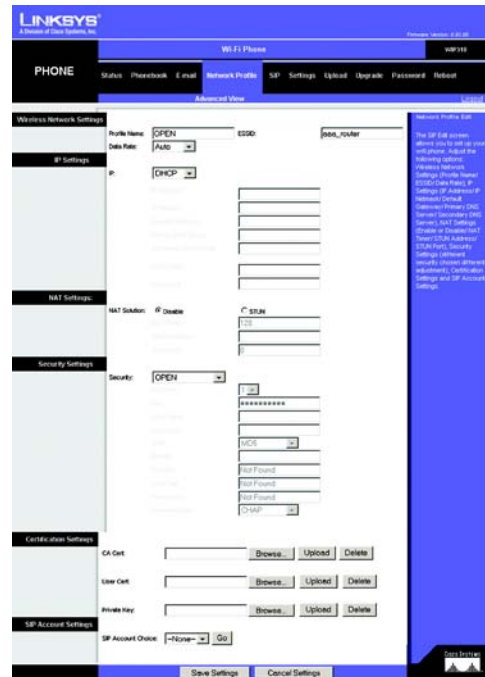


Figure 5-7: Wireless Network Settings

# SIP

You can assign up to six SIP accounts to your IP Phone. The *Account List* option displays first.

## Account List

The *Account List* displays the configured accounts and which ones are active. You can configure or remove a SIP account. When you click **Configure**, the *SIP Setting* screen opens. To edit a SIP account, click on Configure. To remove a SIP account, click on Remove. Click on **Save Settings** to confirm your choices.

## Auto Provisioning

To use the Auto Provisioning feature, check the **Enable** button. Supply the following information: Enable, Resync on Reset, Resync Periodic (in seconds), Random Delay (in seconds), File Address, GPP, or Encryption Type.

## SIP Setting

You can add, change or edit the Internet phone service Account Name, Phone Number, Authentication ID, Authentication Password, SIP Domain, Local Port, Proxy Address, Proxy Port, Outbound Address, Outbound Port and Register Timer (in seconds). You can also select Codec options, Pkt (Packet) Time (in milliseconds) and the Out of Band DTMF.

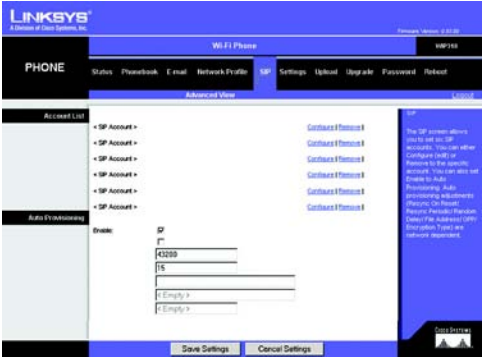


Figure 5-8: SIP Account List



Figure 5-9: SIP Setting

## Wireless-G IP Phone Settings

Set the Phone's call, sound, display, and clock settings, and the phone protection.

### Call Setting

Option	Description
Call Waiting	Check to enable Call Waiting, uncheck to disable.
Forward Number	Enter a phone number or IP address to forward your calls to.
Forward All	Check to send all incoming calls to the Forward Number.
No Answer	Check to send calls to Forward Number when there is no answer on the IP phone.
Block Caller ID	Select On to block caller id's that you previously set up in the IP phone menu.
Refuse Private	Select On to refuse calls that display Private Call as the User ID.
Busy	Check to forward calls when your phone is busy.
Beep Notification	Enable or disable the Beep Notification feature. When this feature is enabled, the phone will beep every 50 seconds so that you can keep track of how long you've been on a call.
Hold Transfer	Select <i>SIP</i> or <i>DTMF Flash</i> as the method used for transferring calls.
Regional Tone	Set the Regional tone setting to <i>North America</i> or <i>Japan</i> .

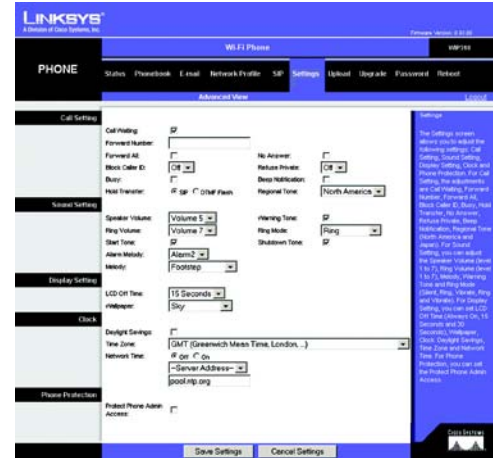


Figure 5-10: Settings

## Sound Settings

Option	Description
Speaker Volume	Set the IP Phone's speaker volume.
Melody	Choose one of the available ring tone melodies.
Ring Volume	Set the IP Phone's ring volume.
Ring Mode	Set the IP Phone's ring mode to <i>Silent</i> , <i>Ring</i> , <i>Vibrate</i> , or <i>Ring + Vibrate</i> .
Warning Tone	Check to enable the IP Phone's warning tones, such as low battery.
Start Tone	Set a tone to use when the Phone powers on.
Shutdown Tone	Set a tone to use when the Phone powers off.
Alarm Melody	Set a tone that will be used for the alarm.

## Display Settings

Option	Description
LCD Off Time	Change the amount of time it takes for the IP Phone to turn off its LCD when the phone is not in use.
Wallpaper	Change the picture displayed on the home screen.



## Clock

Option	Description
Daylight Savings	Check to enable or uncheck to disable automatic Daylight Savings time adjustment.
Time Zone	Set your local timezone.
Network Time	Enable or disable the phone from updating the time from an NTP server.
Network Time Server	Select the server for time settings.
New Network Time Server	Enter a name for a secondary time server, in the event the Network Time Server is not available.

## Phone Protection

Check the **Protect Phone Admin Access** box to disable access to the SIP accounts and Auto Provisioning.

# Upload

## Upload

Option	Description
Melody	Click <b>Browse</b> to locate the sound you want to use. Click <b>Upload</b> to load the music onto the Phone.
Wallpaper	Click <b>Browse</b> to locate the image you want to use. Click <b>Upload</b> to load the image onto the Phone.

## Preview

Option	Description
Melody	Select the sound from the drop-down list. Click <b>Play</b> to replay the sound on the PC, <b>Delete</b> to delete this particular sound, or <b>Delete All</b> to delete all sounds currently loaded.
Wallpaper	Select the image from the drop-down list. Click <b>Show</b> to display the image on the PC, <b>Delete</b> to delete the image, or <b>Delete All</b> to delete all images.



Figure 5-11: Upload

# Upgrade

## Software

Option	Description
Active	View the Active software application.
Inactive	View the Inactive software application.
New Image	Select a New software Image by typing in the address, or click <b>Browse</b> and locate the image.

## Active Firmware Upgrade

You can upgrade the Phone's Firmware.

When you are finished, click **Save Settings** to save the new settings on this screen, or click **Cancel Settings** to maintain the old settings.



Figure 5-12: Upgrade

## Password

This screen lets you change the password information of the Phone. Enter the new Username and/or Password for the IP Phone. Click **Save Settings** to immediately change the password, or click **Cancel Settings** to cancel.



Figure 5-13: Password

## Reboot

Click **Go** to Reboot the phone. Your saved information will not be lost.



Figure 5-14: Reboot







# Appendix A: Troubleshooting

This appendix provides solutions to problems that may occur during the installation and operation of the Wireless-G IP Phone. Read the description below to solve your problems. If you can't find an answer here, check the website of your Internet phone service provider or the Linksys website at [www.linksys.com/international](http://www.linksys.com/international).

## Common Problems and Solutions

### **1. *When I make a telephone call, the call doesn't go through; instead, I hear a fast busy signal.***

Go through this checklist until your problem is solved:

- Follow these instructions to reboot your cable or DSL modem, IP Phone, and router:
  1. Power off your cable or DSL modem by unplugging its power adapter.
  2. Power off the router by unplugging its power adapter.
  3. Power off the IP Phone by pressing and holding down the Power On/Off button for two seconds.
  4. Wait 30 seconds, and then power on your cable or DSL modem by plugging its power adapter into an electrical outlet.
  5. Wait 30 seconds. Power on the router by plugging its power adapter into an electrical outlet.
  6. Wait 10 seconds. Power on the IP Phone by pressing and holding down the Power On/Off button for two seconds.
  7. Reboot one of your networked computers, and check for an active Internet connection.
  8. Pick up the IP Phone and try your call again.
- Set up port forwarding on your router. You must specify that four port ranges be forwarded to the IP address of the IP Phone. These four port ranges are as follows: 5060-5061 (UDP), 53-53 (UDP), 69-69 (UDP), and 10000-20000 (UDP).

If you have a non-Linksys router, refer to its documentation for instructions.



## Wireless-G IP Phone

If you have a Linksys router, then follow these instructions:

1. On one of your networked computers, open your web browser.
2. Access the Router's web-based utility by going to **http://192.168.1.1** or the IP address of the Router.
3. A login screen will appear. Leave the *User Name* field blank. Enter the Router's password (the default is **admin**) in the *Password* field. Then click the **OK** button.
4. Click the **Applications & Gaming** tab, and then click the **Port Range Forwarding** tab.
5. For each port range you must specify, enter a different name in the *Application* field. Then enter the number or range of external port(s) used by the IP Phone.
6. Select the protocol you will be using, **UDP**.
7. Enter the IP address of the IP Phone. For example, if the IP Phone's IP address is 192.168.1.100, you would enter 100 in the field provided.
8. Repeat steps 5-7 until you have entered all four port ranges for the IP Phone.

Application	Start and End	Protocol	IP Address	Enable
Internet phone 1	5060 to 5061	UDP	(IP address of IP Phone)	X
Internet phone 2	53 to 53	UDP	(IP address of IP Phone)	X
Internet phone 3	69 to 69	UDP	(IP address of IP Phone)	X
Internet phone 4	10000 to 20000	UDP	(IP address of IP Phone)	X

9. Check the **Enable** option for the port services you want to use.
10. When you have completed the configuration, click the **Save Settings** button.

**2. When I'm on a telephone call, words are dropped intermittently.**

Go through this checklist until your problem is solved:

- Are you using a wireless router and cordless phone? If so, the router and cordless phone may be using the same frequency and interfere with each other. Move the cordless phone farther away from the router.
- There may be heavy network activity, particularly if you are running a server or using a file sharing program. Try to limit network or Internet activity during any Internet telephone call. For example, if you are running a file sharing program, files may be uploading in the background even though you are not downloading any files, so make sure you exit the program before you make an Internet phone call.
- There may not be enough bandwidth available for your Internet phone call. You may want to test your bandwidth using one of the bandwidth tests available online. If necessary, access your service account at your Internet phone service provider's website, and reduce the bandwidth requirements for your service. For more information, refer to your Internet phone service provider's website.
- There may be too many wireless routers or access points in your location using the same broadcast channel. Try changing the channel that your wireless router or access point uses; refer to the documentation of your router or access point for instructions.

**3. The IP Phone does not ring, and my calls automatically go to voicemail.**

Go through this checklist until your problem is solved:

- Check the ringer volume on the IP Phone, and make sure it is set to an audible level.
- Follow these instructions to reboot your cable or DSL modem, IP Phone, and router:
  1. Power off your cable or DSL modem by unplugging its power adapter.
  2. Power off the router by unplugging its power adapter.
  3. Power off the IP Phone by pressing and holding down the Power On/Off button for two seconds.
  4. Wait 30 seconds, and then power on your cable or DSL modem by plugging its power adapter into an electrical outlet.
  5. Wait 30 seconds. Power on the router by plugging its power adapter into an electrical outlet.

6. Wait 10 seconds. Power on the IP Phone by pressing and holding down the Power On/Off button for two seconds.
  7. Reboot one of your networked computers, and check for an active Internet connection.
- Set up port forwarding on your router. You must specify that four port ranges be forwarded to the IP address of the IP Phone. These four port ranges are as follows: 5060-5061 (UDP), 53-53 (UDP), 69-69 (UDP), and 10000-20000 (UDP).

Note: By default, the IP Phone uses a dynamic IP address assigned by your router. For port forwarding, you may need to assign a static IP address to the IP Phone. Contact your Internet phone service provider for assistance.

If you have a non-Linksys router, refer to its documentation for instructions. If you have a Linksys router, then follow these instructions:

1. On one of your networked computers, open your web browser.
2. Access the Router's web-based utility by going to **http://192.168.1.1** or the IP address of the Router.
3. A login screen will appear. Leave the *User Name* field blank. Enter the Router's password (the default is **admin**) in the *Password* field. Then click the **OK** button.
4. Click the **Applications & Gaming** tab, and then click the **Port Range Forwarding** tab.
5. For each port range you must specify, enter a different name in the *Application* field. Then enter the number or range of external port(s) used by the IP Phone.
6. Select the protocol you will be using, **UDP**.
7. Enter the IP address of the IP Phone. For example, if the IP Phone's IP address is 192.168.1.100, you would enter 100 in the field provided.

8. Repeat steps 5-7 until you have entered all four port ranges for the IP Phone.

Application	Start and End	Protocol	IP Address	Enable
Internet phone 1	5060 to 5061	UDP	(IP address of IP Phone)	X
Internet phone 2	53 to 53	UDP	(IP address of IP Phone)	X
Internet phone 3	69 to 69	UDP	(IP address of IP Phone)	X
Internet phone 4	10000 to 20000	UDP	(IP address of IP Phone)	X

- 9. Check the **Enable** option for the port services you want to use.
- 10. When you have completed the configuration, click the **Save Settings** button.

**4. The power LED does not light up.**

Go through this checklist until your problem is solved:

- Remove the IP Phone’s battery from its compartment. Wait five seconds while the IP Phone resets itself. Insert the battery and power on the IP Phone.
- You may be using the wrong power adapter. Make sure the power adapter you are using is the one included with the IP Phone.

**5. I can not access the web-based utility.**

This occurs because the computer the user is trying to access the phone with is not connected to the same network as the phone. The solution is to have both the phone and the computer on the same network.

## Frequently Asked Questions

***Can I make calls if my Internet connection is down?***

No. Your high-speed Internet connection must be active when you make Internet phone calls.

***Can I use the IP Phone to make a call and browse the Internet at the same time?***

No. The IP Phone supports either calling or web browsing, not both at the same time. However, you can make calls with the IP Phone while browsing the Internet on your computer. Please note that your web browsing may affect the quality of your telephone call, depending on the amount of upstream data traffic passing through your Internet connection.

***Can I receive calls while my network is down?***

You cannot directly receive calls while your network is down. However, your Internet phone service account may allow you to forward calls to a different telephone number, such as a cellular phone number. For more information, visit the website of your Internet phone service provider.

# Appendix B: Glossary

This glossary contains some basic networking terms you may come across when using this product. For more advanced terms, see the complete Linksys glossary at <http://www.linksys.com/glossary>.

**Access Point** - A device that allows wireless-equipped computers and other devices to communicate with a wired network. Also used to expand the range of a wireless network.

**Ad-hoc** - A group of wireless devices communicating directly with each other (peer-to-peer) without the use of an access point.

**Bandwidth** - The transmission capacity of a given device or network.

**Bit** - A binary digit.

**Boot** - To start a device and cause it to start executing instructions.

**Broadband** - An always-on, fast Internet connection.

**Browser** - An application program that provides a way to look at and interact with all the information on the World Wide Web.

**Byte** - A unit of data that is usually eight bits long

**Cable Modem** - A device that connects a computer to the cable television network, which in turn connects to the Internet.

**Default Gateway** - A device that forwards Internet traffic from your local area network.

**DHCP (Dynamic Host Configuration Protocol)** - A networking protocol that allows administrators to assign temporary IP addresses to network computers by "leasing" an IP address to a user for a limited amount of time, instead of assigning permanent IP addresses.

## Wireless-G IP Phone

**DMZ (Demilitarized Zone)** - Removes the Router's firewall protection from one PC, allowing it to be "seen" from the Internet.

**DNS (Domain Name Server)** - The IP address of your ISP's server, which translates the names of websites into IP addresses.

**Domain** - A specific name for a network of computers.

**Download** - To receive a file transmitted over a network.

**DSL (Digital Subscriber Line)** - An always-on broadband connection over traditional phone lines.

**Dynamic IP Address** - A temporary IP address assigned by a DHCP server.

**Encryption** - Encoding data transmitted in a network.

**Ethernet** - IEEE standard network protocol that specifies how data is placed on and retrieved from a common transmission medium.

**Firmware** - The programming code that runs a networking device.

**FTP (File Transfer Protocol)** - A protocol used to transfer files over a TCP/IP network.

**Full Duplex** - The ability of a networking device to receive and transmit data simultaneously.

**Gateway** - A device that interconnects networks with different, incompatible communications protocols.

**Half Duplex** - Data transmission that can occur in two directions over a single line, but only one direction at a time.

**HTTP (HyperText Transport Protocol)** - The communications protocol used to connect to servers on the World Wide Web.

**Infrastructure** - A wireless network that is bridged to a wired network via an access point.

**IP (Internet Protocol)** - A protocol used to send data over a network.

**IP Address** - The address used to identify a computer or device on a network.

**ISP (Internet Service Provider)** - A company that provides access to the Internet.

**LAN** - The computers and networking products that make up your local network.

**MAC (Media Access Control) Address** - The unique address that a manufacturer assigns to each networking device.

**Mbps (MegaBits Per Second)** - One million bits per second; a unit of measurement for data transmission.

**Network** - A series of computers or devices connected for the purpose of data sharing, storage, and/or transmission between users.

**Packet** - A unit of data sent over a network.

**Passphrase** - Used much like a password, a passphrase simplifies the WEP encryption process by automatically generating the WEP encryption keys for Linksys products.

**Port** - The connection point on a computer or networking device used for plugging in cables or adapters.

**RJ-45 (Registered Jack-45)** - An Ethernet connector that holds up to eight wires.

**Roaming** - The ability to take a wireless device from one access point's range to another without losing the connection.

**Router** - A networking device that connects multiple networks together.

**Server** - Any computer whose function in a network is to provide user access to files, printing, communications, and other services.

**SSID (Service Set Identifier)** - Your wireless network's name.

**Static IP Address** - A fixed address assigned to a computer or device that is connected to a network.

**Static Routing** - Forwarding data in a network via a fixed path.

**Subnet Mask** - An address code that determines the size of the network.



## Wireless-G IP Phone

**Switch** - 1. A data switch that connects computing devices to host computers, allowing a large number of devices to share a limited number of ports. 2. A device for making, breaking, or changing the connections in an electrical circuit.

**TCP (Transmission Control Protocol)** - A network protocol for transmitting data that requires acknowledgement from the recipient of data sent.

**TCP/IP (Transmission Control Protocol/Internet Protocol)** - A set of instructions PCs use to communicate over a network.

**Telnet** - A user command and TCP/IP protocol used for accessing remote PCs.

**TFTP (Trivial File Transfer Protocol)** - A version of the TCP/IP FTP protocol that has no directory or password capability.

**Throughput** - The amount of data moved successfully from one node to another in a given time period.

**Topology** - The physical layout of a network.

**TX Rate** - Transmission Rate.

**Upgrade** - To replace existing software or firmware with a newer version.

**Upload** - To transmit a file over a network.

**URL (Uniform Resource Locator)** - The address of a file located on the Internet.

**WAN (Wide Area Network)**- The Internet.

**WEP (Wired Equivalent Privacy)** - A method of encrypting network data transmitted on a wireless network for greater security.

**WLAN (Wireless Local Area Network)** - A group of computers and associated devices that communicate with each other wirelessly.

# Appendix C: Specifications

<b>Model</b>	<b>WIP310</b>
<b>Standards</b>	<b>802.11b, 802.11g</b>
<b>Channels</b>	<b>11 Channels (US, Canada), 13 Channels (Europe)</b>
<b>Transmit Power</b>	<b>12.5 dBm for 802.11g / 16.6 dBm for 802.11b</b>
<b>External Interface</b>	<b>One USB 1.1 port, 2.5m Standard 4 Segment Ear Phone Jack</b>
<b>Display</b>	<b>1.8 inch TFT, LCD (128 x 160 pixels) with 65K colors</b>
<b>Network Protocols</b>	<b>TCP/UDP/IP, IPV4, DNS, SDP, ARP, ICMP, DHCP Client, Static IP, PPPoE</b>
<b>Security</b>	<b>WEP, WPA,WPA2,TKIP</b>
<b>Voice Protocols</b>	<b>SIP v2 Session Initiation Protocol (RFC3261) SIP Session Keep Alive Multiple SIP Account Support</b>
<b>Voice Codecs</b>	<b>G.711, G.726, G.729, G.723 CODEC support</b>
<b>DTMF Transmission</b>	<b>In-band, Out-band (RFC2833)</b>

**Voice Quality**

**G.168 Echo Cancellation**  
**Jitter Buffer Control**  
**CNG - Comfortable Noise Generation**  
**Handsfree Speaker**  
**Speaker and Microphone Volume Control**  
**Silence Suppression**  
**VAD - Voice Activity Detection**

**Dimensions  
(W x H x D)**

**1.77" x 4.65" x 0.81"**  
**(45 mm x 118 mm x 21 mm)**

**Unit Weight**

**.22 lb (10 g)**

**Power**

**900mAh Li-ion Battery, AC Adapter\***

**Certifications**

**FCC, CE, IC, UL**

**Operating Temp.**

**0 to 40°C (32 to 104 °F)**

**Storage Temp.**

**-20 to 65°C (-4 to 149 °F)**

**Operating Humidity**

**10% to 80% relative humidity, non-condensing**

**Storage Humidity**

**10% to 95% non-condensing**

# Appendix D: Warranty Information

## LIMITED WARRANTY

Your Internet phone service provider warrants to You that, for a period of one year (the “Warranty Period”), your Linksys Product will be substantially free of defects in materials and workmanship under normal use. Your exclusive remedy and Your Internet phone service provider’s entire liability under this warranty will be for Your Internet phone service provider at its option to repair or replace the Product or refund Your purchase price less any rebates. This limited warranty extends only to the original purchaser.

If the Product proves defective during the Warranty Period call Your Internet phone service provider Technical Support in order to obtain a Return Authorization Number, if applicable. If You are requested to return the Product, mark the Return Authorization Number clearly on the outside of the package. You are responsible for shipping defective Products to Your Internet phone service provider.

ALL IMPLIED WARRANTIES AND CONDITIONS OF MERCHANTABILITY OR FITNESS FOR A PARTICULAR PURPOSE ARE LIMITED TO THE DURATION OF THE WARRANTY PERIOD. ALL OTHER EXPRESS OR IMPLIED CONDITIONS, REPRESENTATIONS AND WARRANTIES, INCLUDING ANY IMPLIED WARRANTY OF NON-INFRINGEMENT, ARE DISCLAIMED. Some jurisdictions do not allow limitations on how long an implied warranty lasts, so the above limitation may not apply to You. This warranty gives You specific legal rights, and You may also have other rights which vary by jurisdiction.

This warranty does not apply if the Product (a) has been altered, except by Your Internet phone service provider, (b) has not been installed, operated, repaired, or maintained in accordance with instructions supplied by Your Internet phone service provider, or (c) has been subjected to abnormal physical or electrical stress, misuse, negligence, or accident. In addition, due to the continual development of new techniques for intruding upon and attacking networks, Your Internet phone service provider does not warrant that the Product will be free of vulnerability to intrusion or attack.

TO THE EXTENT NOT PROHIBITED BY LAW, IN NO EVENT WILL YOUR INTERNET PHONE SERVICE PROVIDER BE LIABLE FOR ANY LOST DATA, REVENUE OR PROFIT, OR FOR SPECIAL, INDIRECT, CONSEQUENTIAL, INCIDENTAL OR PUNITIVE DAMAGES, REGARDLESS OF THE THEORY OF LIABILITY (INCLUDING NEGLIGENCE), ARISING OUT OF OR RELATED TO THE USE OF OR INABILITY TO USE THE PRODUCT (INCLUDING ANY SOFTWARE), EVEN IF Your Internet phone service provider HAS BEEN ADVISED OF THE POSSIBILITY OF SUCH DAMAGES. IN NO EVENT WILL Your Internet phone service provider’ LIABILITY EXCEED THE AMOUNT PAID BY YOU FOR THE PRODUCT. The foregoing limitations will apply even if any warranty or remedy provided under this Agreement fails of its essential purpose. Some jurisdictions do not allow the exclusion or limitation of incidental or consequential damages, so the above limitation or exclusion may not apply to You.

Please contact your Internet phone service provider regarding the warranty for the Product.



# Appendix E: Regulatory Information

## FCC Statement

This product has been tested and complies with the specifications for a Class B digital device, pursuant to Part 15 of the FCC Rules. These limits are designed to provide reasonable protection against harmful interference in a residential installation. This equipment generates, uses, and can radiate radio frequency energy and, if not installed and used according to the instructions, may cause harmful interference to radio communications. However, there is no guarantee that interference will not occur in a particular installation. If this equipment does cause harmful interference to radio or television reception, which is found by turning the equipment off and on, the user is encouraged to try to correct the interference by one or more of the following measures:

- Reorient or relocate the receiving antenna.
- Increase the separation between the equipment and receiver.
- Connect the equipment into an outlet on a circuit different from that to which the receiver is connected.
- Consult the dealer or an experienced radio/TV technician for help.

This device complies with Part 15 of the FCC Rules. Operation is subject to the following two conditions: (1) This device may not cause harmful interference, and (2) this device must accept any interference received, including interference that may cause undesired operation.

FCC Caution: Any changes or modifications not expressly approved by the party responsible for compliance could void the user's authority to operate this equipment.

### IMPORTANT NOTE:

#### FCC Radiation Exposure Statement:

This equipment complies with FCC radiation exposure limits set forth for an uncontrolled environment. End users must follow the specific operating instructions for satisfying RF exposure compliance.

This transmitter must not be co-located or operating in conjunction with any other antenna or transmitter.

This equipment has been SAR-evaluated. The Maximum average SAR(1g) test value is 1.490W/kg.

Linksys declares that WIP310 (FCC ID: Q87-WIP310) is limited in CH1 ~CH11 for 2.4 GHz by specified firmware controlled in U.S.A.

## Safety Notices

**Caution:** To reduce the risk of fire, use only No. 26 AWG or larger telecommunication line cord.

Do not use this product near water, for example, in a wet basement or near a swimming pool.

Avoid using this product during an electrical storm. There may be a remote risk of electric shock from lightning.

## Industry Canada

This device complies with Industry Canada ICES-003 and RSS210 rules.

Cet appareil est conforme aux normes NMB003 et RSS210 d'Industrie Canada.

## IC Statement

Operation is subject to the following two conditions:

1. This device may not cause interference and
2. This device must accept any interference, including interference that may cause undesired operation of the device.

## Règlement d'Industry Canada

Les conditions de fonctionnement sont sujettes à deux conditions:

1. Ce périphérique ne doit pas causer d'interférence et
2. Ce périphérique doit accepter toute interférence, y compris les interférences pouvant perturber le bon fonctionnement de ce périphérique

## User Information for Consumer Products Covered by EU Directive 2002/96/EC on Waste Electric and Electronic Equipment (WEEE)

This document contains important information for users with regards to the proper disposal and recycling of Linksys products. Consumers are required to comply with this notice for all electronic products bearing the following symbol:

### English

#### Environmental Information for Customers in the European Union

European Directive 2002/96/EC requires that the equipment bearing this symbol on the product and/or its packaging must not be disposed of with unsorted municipal waste. The symbol indicates that this product should be disposed of separately from regular household waste streams. It is your responsibility to dispose of this and other electric and electronic equipment via designated collection facilities appointed by the government or local authorities. Correct disposal and recycling will help prevent potential negative consequences to the environment and human health. For more detailed information about the disposal of your old equipment, please contact your local authorities, waste disposal service, or the shop where you purchased the product.





## Ceština/Czech

### Informace o ochraně životního prostředí pro zákazníky v zemích Evropské unie

Evropská směrnice 2002/96/ES zakazuje, aby zařízení označené tímto symbolem na produktu anebo na obalu bylo likvidováno s netříděným komunálním odpadem. Tento symbol udává, že daný produkt musí být likvidován odděleně od běžného komunálního odpadu. Odpovídáte za likvidaci tohoto produktu a dalších elektrických a elektronických zařízení prostřednictvím určených sběrných míst stanovených vládou nebo místními úřady. Správná likvidace a recyklace pomáhá předcházet potenciálním negativním dopadům na životní prostředí a lidské zdraví. Podrobnější informace o likvidaci starého vybavení si laskavě vyžádejte od místních úřadů, podniku zabývajícího se likvidací komunálních odpadů nebo obchodu, kde jste produkt zakoupili.

## Dansk/Danish

### Miljøinformation for kunder i EU

EU-direktiv 2002/96/EF kræver, at udstyr der bærer dette symbol på produktet og/eller emballagen ikke må bortskaffes som usorteret kommunalt affald. Symbolet betyder, at dette produkt skal bortskaffes adskilt fra det almindelige husholdningsaffald. Det er dit ansvar at bortskaffe dette og andet elektrisk og elektronisk udstyr via bestemte indsamlingssteder udpeget af staten eller de lokale myndigheder. Korrekt bortskaffelse og genvinding vil hjælpe med til at undgå mulige skader for miljøet og menneskers sundhed. Kontakt venligst de lokale myndigheder, renovationstjenesten eller den butik, hvor du har købt produktet, angående mere detaljeret information om bortskaffelse af dit gamle udstyr.

**Deutsch/German****Umweltinformation für Kunden innerhalb der Europäischen Union**

Die Europäische Richtlinie 2002/96/EC verlangt, dass technische Ausrüstung, die direkt am Gerät und/oder an der Verpackung mit diesem Symbol versehen ist nicht zusammen mit unsortiertem Gemeindeabfall entsorgt werden darf. Das Symbol weist darauf hin, dass das Produkt von regulärem Haushaltsmüll getrennt entsorgt werden sollte. Es liegt in Ihrer Verantwortung, dieses Gerät und andere elektrische und elektronische Geräte über die dafür zuständigen und von der Regierung oder örtlichen Behörden dazu bestimmten Sammelstellen zu entsorgen. Ordnungsgemäßes Entsorgen und Recyceln trägt dazu bei, potentielle negative Folgen für Umwelt und die menschliche Gesundheit zu vermeiden. Wenn Sie weitere Informationen zur Entsorgung Ihrer Altgeräte benötigen, wenden Sie sich bitte an die örtlichen Behörden oder städtischen Entsorgungsdienste oder an den Händler, bei dem Sie das Produkt erworben haben.

**Eesti/Estonian****Keskkonnaalane informatsioon Euroopa Liidus asuvatele klientidele**

Euroopa Liidu direktiivi 2002/96/EÜ nõuete kohaselt on seadmeid, millel on tootel või pakendil käesolev sümbol, keelatud kõrvaldada koos sorteerimata olmejäätmetega. See sümbol näitab, et toode tuleks kõrvaldada eraldi tavalistest olmejäätmevoogudest. Olete kohustatud kõrvaldama käesoleva ja ka muud elektri- ja elektroonikaseadmed riigi või kohalike ametiasutuste poolt ette nähtud kogumispunktide kaudu. Seadmete korrektn kõrvaldamine ja ringlussevõtt aitab vältida võimalikke negatiivseid tagajärgi keskkonnale ning inimeste tervisele. Vanade seadmete kõrvaldamise kohta täpsema informatsiooni saamiseks võtke palun ühendust kohalike ametiasutustega, jäätmekäitlusfirmaga või kauplusega, kust te toote ostsite.

## **Español/Spanish**

### **Información medioambiental para clientes de la Unión Europea**

La Directiva 2002/96/CE de la UE exige que los equipos que lleven este símbolo en el propio aparato y/o en su embalaje no deben eliminarse junto con otros residuos urbanos no seleccionados. El símbolo indica que el producto en cuestión debe separarse de los residuos domésticos convencionales con vistas a su eliminación. Es responsabilidad suya desechar este y cualesquiera otros aparatos eléctricos y electrónicos a través de los puntos de recogida que ponen a su disposición el gobierno y las autoridades locales. Al desechar y reciclar correctamente estos aparatos estará contribuyendo a evitar posibles consecuencias negativas para el medio ambiente y la salud de las personas. Si desea obtener información más detallada sobre la eliminación segura de su aparato usado, consulte a las autoridades locales, al servicio de recogida y eliminación de residuos de su zona o pregunte en la tienda donde adquirió el producto.

**Ελληνικά/Greek****Στοιχεία περιβαλλοντικής προστασίας για πελάτες εντός της Ευρωπαϊκής Ένωσης**

Η Κοινοτική Οδηγία 2002/96/EC απαιτεί ότι ο εξοπλισμός ο οποίος φέρει αυτό το σύμβολο στο προϊόν και/ή στη συσκευασία του δεν πρέπει να απορρίπτεται μαζί με τα μικτά κοινοτικά απορρίμματα. Το σύμβολο υποδεικνύει ότι αυτό το προϊόν θα πρέπει να απορρίπτεται ξεχωριστά από τα συνήθη οικιακά απορρίμματα. Είστε υπεύθυνος για την απόρριψη του παρόντος και άλλου ηλεκτρικού και ηλεκτρονικού εξοπλισμού μέσω των καθορισμένων εγκαταστάσεων συγκέντρωσης απορριμμάτων οι οποίες παρέχονται από το κράτος ή τις αρμόδιες τοπικές αρχές. Η σωστή απόρριψη και ανακύκλωση συμβάλλει στην πρόληψη πιθανών αρνητικών συνεπειών για το περιβάλλον και την υγεία. Για περισσότερες πληροφορίες σχετικά με την απόρριψη του παλιού σας εξοπλισμού, παρακαλώ επικοινωνήστε με τις τοπικές αρχές, τις υπηρεσίες απόρριψης ή το κατάστημα από το οποίο αγοράσατε το προϊόν.

**Français/French****Informations environnementales pour les clients de l'Union européenne**

La directive européenne 2002/96/CE exige que l'équipement sur lequel est apposé ce symbole sur le produit et/ou son emballage ne soit pas jeté avec les autres ordures ménagères. Ce symbole indique que le produit doit être éliminé dans un circuit distinct de celui pour les déchets des ménages. Il est de votre responsabilité de jeter ce matériel ainsi que tout autre matériel électrique ou électronique par les moyens de collecte indiqués par le gouvernement et les pouvoirs publics des collectivités territoriales. L'élimination et le recyclage en bonne et due forme ont pour but de lutter contre l'impact néfaste potentiel de ce type de produits sur l'environnement et la santé publique. Pour plus d'informations sur le mode d'élimination de votre ancien équipement, veuillez prendre contact avec les pouvoirs publics locaux, le service de traitement des déchets, ou l'endroit où vous avez acheté le produit.

## Italiano/Italian

### Informazioni relative all'ambiente per i clienti residenti nell'Unione Europea

La direttiva europea 2002/96/EC richiede che le apparecchiature contrassegnate con questo simbolo sul prodotto e/o sull'imballaggio non siano smaltite insieme ai rifiuti urbani non differenziati. Il simbolo indica che questo prodotto non deve essere smaltito insieme ai normali rifiuti domestici. È responsabilità del proprietario smaltire sia questi prodotti sia le altre apparecchiature elettriche ed elettroniche mediante le specifiche strutture di raccolta indicate dal governo o dagli enti pubblici locali. Il corretto smaltimento ed il riciclaggio aiuteranno a prevenire conseguenze potenzialmente negative per l'ambiente e per la salute dell'essere umano. Per ricevere informazioni più dettagliate circa lo smaltimento delle vecchie apparecchiature in Vostro possesso, Vi invitiamo a contattare gli enti pubblici di competenza, il servizio di smaltimento rifiuti o il negozio nel quale avete acquistato il prodotto.

## Latviešu valoda/Latvian

### Ekoloģiska informācija klientiem Eiropas Savienības jurisdikcijā

Direktīvā 2002/96/EK ir prasība, ka aprīkojumu, kam pievienota zīme uz paša izstrādājuma vai uz tā iesaiņojuma, nedrīkst izmest nešķīrotā veidā kopā ar komunālajiem atkritumiem (tiem, ko rada vietēji iedzīvotāji un uzņēmumi). Šī zīme nozīmē to, ka šī ierīce ir jāizmet atkritumos tā, lai tā nenonāktu kopā ar parastiem mājāsaimniecības atkritumiem. Jūsu pienākums ir šo un citas elektriskas un elektroniskas ierīces izmest atkritumos, izmantojot īpašus atkritumu savākšanas veidus un līdzekļus, ko nodrošina valsts un pašvaldību iestādes. Ja izmešana atkritumos un pārstrāde tiek veikta pareizi, tad mazinās iespējamais kaitējums dabai un cilvēku veselībai. Sīkākas ziņas par novecojuša aprīkojuma izmešanu atkritumos jūs varat saņemt vietējā pašvaldībā, atkritumu savākšanas dienestā, kā arī veikalā, kur iegādājāties šo izstrādājumu.

**Lietuvškai/Lithuanian****Aplinkosaugos informacija, skirta Europos Sąjungos vartotojams**

Europos direktyva 2002/96/EC numato, kad įrangos, kuri ir (arba) kurios pakuotė yra pažymėta šiuo simboliu, negalima šalinti kartu su nerūšiuotomis komunalinėmis atliekomis. Šis simbolis rodo, kad gaminį reikia šalinti atskirai nuo bendro buitinių atliekų srauto. Jūs privalote užtikrinti, kad ši ir kita elektros ar elektroninė įranga būtų šalinama per tam tikras nacionalinės ar vietinės valdžios nustatytas atliekų rinkimo sistemas. Tinkamai šalinant ir perdurbant atliekas, bus išvengta galimos žalos aplinkai ir žmonių sveikatai. Daugiau informacijos apie jūsų senos įrangos šalinimą gali pateikti vietinės valdžios institucijos, atliekų šalinimo tarnybos arba parduotuvės, kuriose įsigijote tą gaminį.

**Malti/Maltese****Informazzjoni Ambjentali għal Kliġenti fl-Unjoni Ewropea**

Id-Direttiva Ewropea 2002/96/KE titlob li t-tagħmir li jkun fiha is-simbolu fuq il-prodott u/jew fuq l-ippakkjar ma jistax jintrema ma' skart municiपालi li ma għiex isseparat. Is-simbolu jindika li dan il-prodott għandu jintrema separatament minn ma' l-iskart domestiku regolari. Hija responsabbiltà tiegħek li tarmi dan it-tagħmir u kull tagħmir ieħor ta' l-elettriku u elettroniku permezz ta' faċilitajiet ta' għbir appuntati apposta mill-gvern jew mill-awtoritajiet lokali. Ir-rimi b'mod korrett u r-riciklaġġ għin jipprevjeni konsegwenzi negattivi potenzjali għall-ambjent u għas-saħħa tal-bniedem. Għal aktar informazzjoni dettaljata dwar ir-rimi tat-tagħmir antik tiegħek, jekk jogħġbok ikkuntattja lill-awtoritajiet lokali tiegħek, is-servizzi għar-rimi ta' l-iskart, jew il-hanut minn fejn xtrajt il-prodott.

## **Magyar/Hungarian**

### **Környezetvédelmi információ az európai uniós vásárlók számára**

A 2002/96/EC számú európai uniós irányelv megkívánja, hogy azokat a termékeket, amelyeken, és/vagy amelyek csomagolásán az alábbi címke megjelenik, tilos a többi szelektálatlan lakossági hulladékkal együtt kidobni. A címke azt jelöli, hogy az adott termék kidobásakor a szokványos háztartási hulladékelszállítási rendszerektől elkülönített eljárást kell alkalmazni. Az Ön felelőssége, hogy ezt, és más elektromos és elektronikus berendezéseit a kormányzati vagy a helyi hatóságok által kijelölt gyűjtőrendszereken keresztül számolja fel. A megfelelő hulladékfeldolgozás segít a környezetre és az emberi egészségre potenciálisan ártalmas negatív hatások megelőzésében. Ha elavult berendezéseinek felszámolásához további részletes információra van szüksége, kérjük, lépjen kapcsolatba a helyi hatóságokkal, a hulladékfeldolgozási szolgálattal, vagy azzal üzlettel, ahol a terméket vásárolta.

## **Nederlands/Dutch**

### **Milieu-informatie voor klanten in de Europese Unie**

De Europese Richtlijn 2002/96/EC schrijft voor dat apparatuur die is voorzien van dit symbool op het product of de verpakking, niet mag worden ingezameld met niet-gescheiden huishoudelijk afval. Dit symbool geeft aan dat het product apart moet worden ingezameld. U bent zelf verantwoordelijk voor de vernietiging van deze en andere elektrische en elektronische apparatuur via de daarvoor door de landelijke of plaatselijke overheid aangewezen inzamelingskanalen. De juiste vernietiging en recycling van deze apparatuur voorkomt mogelijke negatieve gevolgen voor het milieu en de gezondheid. Voor meer informatie over het vernietigen van uw oude apparatuur neemt u contact op met de plaatselijke autoriteiten of afvalverwerkingsdienst, of met de winkel waar u het product hebt aangeschaft.

## Norsk/Norwegian

### Miljøinformasjon for kunder i EU

EU-direktiv 2002/96/EF krever at utstyr med følgende symbol avbildet på produktet og/eller pakningen, ikke må kastes sammen med usortert avfall. Symbolet indikerer at dette produktet skal håndteres atskilt fra ordinær avfallsinnsamling for husholdningsavfall. Det er ditt ansvar å kvitte deg med dette produktet og annet elektrisk og elektronisk avfall via egne innsamlingsordninger slik myndighetene eller kommunene bestemmer. Korrekt avfallshåndtering og gjenvinning vil være med på å forhindre mulige negative konsekvenser for miljø og helse. For nærmere informasjon om håndtering av det kasserte utstyret ditt, kan du ta kontakt med kommunen, en innsamlingsstasjon for avfall eller butikken der du kjøpte produktet.

## Polski/Polish

### Informacja dla klientów w Unii Europejskiej o przepisach dotyczących ochrony środowiska

Dyrektywa Europejska 2002/96/EC wymaga, aby sprzęt oznaczony symbolem znajdującym się na produkcie i/lub jego opakowaniu nie był wyrzucany razem z innymi niesortowanymi odpadami komunalnymi. Symbol ten wskazuje, że produkt nie powinien być usuwany razem ze zwykłymi odpadami z gospodarstw domowych. Na Państwu spoczywa obowiązek wyrzucania tego i innych urządzeń elektrycznych oraz elektronicznych w punktach odbioru wyznaczonych przez władze krajowe lub lokalne. Pozbywanie się sprzętu we właściwy sposób i jego recykling pomogą zapobiec potencjalnie negatywnym konsekwencjom dla środowiska i zdrowia ludzkiego. W celu uzyskania szczegółowych informacji o usuwaniu starego sprzętu, prosimy zwrócić się do lokalnych władz, służb oczyszczania miasta lub sklepu, w którym produkt został nabyty.



## **Português/Portuguese**

### **Informação ambiental para clientes da União Europeia**

A Directiva Europeia 2002/96/CE exige que o equipamento que exibe este símbolo no produto e/ou na sua embalagem não seja eliminado junto com os resíduos municipais não separados. O símbolo indica que este produto deve ser eliminado separadamente dos resíduos domésticos regulares. É da sua responsabilidade eliminar este e qualquer outro equipamento eléctrico e electrónico através dos instalações de recolha designadas pelas autoridades governamentais ou locais. A eliminação e reciclagem correctas ajudarão a prevenir as consequências negativas para o ambiente e para a saúde humana. Para obter informações mais detalhadas sobre a forma de eliminar o seu equipamento antigo, contacte as autoridades locais, os serviços de eliminação de resíduos ou o estabelecimento comercial onde adquiriu o produto.

## **Slovenčina/Slovak**

### **Informácie o ochrane životného prostredia pre zákazníkov v Európskej únii**

Podľa európskej smernice 2002/96/ES zariadenie s týmto symbolom na produkte a/alebo jeho balení nesmie byť likvidované spolu s netriedeným komunálnym odpadom. Symbol znamená, že produkt by sa mal likvidovať oddelene od bežného odpadu z domácností. Je vašou povinnosťou likvidovať toto i ostatné elektrické a elektronické zariadenia prostredníctvom špecializovaných zberných zariadení určených vládou alebo miestnymi orgánmi. Správna likvidácia a recyklácia pomôže zabrániť prípadným negatívnym dopadom na životné prostredie a zdravie ľudí. Ak máte záujem o podrobnejšie informácie o likvidácii starého zariadenia, obráťte sa, prosím, na miestne orgány, organizácie zaoberajúce sa likvidáciou odpadov alebo obchod, v ktorom ste si produkt zakúpili.

## Slovenčina/Slovene

### Okoljske informacije za stranke v Evropski uniji

Evropska direktiva 2002/96/EC prepoveduje odlaganje opreme, označene s tem simbolom – na izdelku in/ali na embalaži – med običajne, nerazvrščene odpadke. Ta simbol opozarja, da je treba izdelek odvreči ločeno od preostalih gospodinskih odpadkov. Vaša odgovornost je, da to in preostalo električno in elektronsko opremo odnesete na posebna zbirališča, ki jih določijo državne ustanove ali lokalna uprava. S pravilnim odlaganjem in recikliranjem boste preprečili morebitne škodljive vplive na okolje in zdravje ljudi. Če želite izvedeti več o odlaganju stare opreme, se obrnite na lokalno upravo, odpad ali trgovino, kjer ste izdelek kupili.

## Suomi/Finnish

### Ympäristöä koskevia tietoja EU-alueen asiakkaille

EU-direktiivi 2002/96/EY edellyttää, että jos laitteistossa on tämä symboli itse tuotteessa ja/tai sen pakkauksessa, laitteistoa ei saa hävittää lajittelemattoman yhdyskuntajätteen mukana. Symboli merkitsee sitä, että tämä tuote on hävitettävä erillään tavallisesta kotitalousjätteestä. Sinun vastuullasi on hävittää tämä elektroniikkatuote ja muut vastaavat elektroniikkatuotteet viemällä tuote tai tuotteet viranomaisen määräämään keräyspisteeseen. Laitteiston oikea hävittäminen estää mahdolliset kielteiset vaikutukset ympäristöön ja ihmisten terveyteen. Lisätietoja vanhan laitteiston oikeasta hävitystavasta saa paikallisilta viranomaisilta, jätteenhävityspalvelusta tai siitä myymälästä, josta ostit tuotteen.

## **Svenska/Swedish**

### **Miljöinformation för kunder i Europeiska unionen**

Det europeiska direktivet 2002/96/EC kräver att utrustning med denna symbol på produkten och/eller förpackningen inte får kastas med osorterat kommunalt avfall. Symbolen visar att denna produkt bör kastas efter att den avskiljts från vanligt hushållsavfall. Det faller på ditt ansvar att kasta denna och annan elektrisk och elektronisk utrustning på fastställda insamlingsplatser utsedda av regeringen eller lokala myndigheter. Korrekt kassering och återvinning skyddar mot eventuella negativa konsekvenser för miljön och personhälsa. För mer detaljerad information om kassering av din gamla utrustning kontaktar du dina lokala myndigheter, avfallshanteringen eller butiken där du köpte produkten.

For more information, visit [www.linksys.com](http://www.linksys.com).

# Appendix F: Contact Information

**Need to contact Linksys?**

**Visit us online for information on the latest products and updates to your existing products at:**

**<http://www.linksys.com> or  
[ftp.linksys.com](ftp://ftp.linksys.com)**

**Can't find information about a product you want to buy on the web? Do you want to know more about networking with Linksys products? Give our advice line a call at:  
Or fax your request in to:**

**800-546-5797 (LINKSYS)  
949-823-3002**

**If you experience problems with any Linksys product, you can call us at:  
Don't wish to call? You can e-mail us at:**

**800-326-7114  
[support@linksys.com](mailto:support@linksys.com)**



[www.linksys.com](http://www.linksys.com)