



WHA YU INDUSTRIAL CO., LTD.(HEAD OFFICE)  
 DONGGUAN AEON TECH CO.,LTD.(CHINA)  
 SUZHOU AEON TECH CO.,LTD.(CHINA)  
 AEON TECH (SHANGHAI) CO.,LTD(CHINA)  
 DONGGUAN PARNER TECH CO.,LTD.(CHINA)



## SPECIFICATION FOR APPROVAL

**CUSTOMER:** 中磊電子股份有限公司

**PART NAME:** PIFA Antenna

**PART NO.:**

**REVISION:**

**W. Y. P/NO.:** C147-510426-A(SSR-74300)

**REV.:** X1

	MANUFACTURER SIGNATURE	CUSTOMER SIGNATURE
APPROVED BY :		
DATE :	12/14/07	

### WHA YU GROUP

WHA YU INDUSTRIAL CO., LTD.(HEAD OFFICE)

謙裕實業股份有限公司

Address: No. 326,Sec. 2,Kung Tao 5 Road, Hsin Chu City, Taiwan, R.O.C.

Tel:+886-3-5714225(REP.) Fax:+ 886-3-5713853 · + 886-3-5723600

DONGGUAN AEON TECH CO.,LTD.(CHINA)

東莞台霖電子通訊有限公司

Address:Hupan Industrial District,Tai Ling Shan Town,Dong Guan City,Guangdong,China

Tel:+86-769-85655858 Fax:+86-769-85655258

SUZHOU AEON TECH CO.,LTD(CHINA)

蘇州華廣電通有限公司

Address:Limin North Road, LiLi Town,LiLi Industrial Park,LinHu Economic Zone

Wujiang City,Jiangsu Province,China

Tel:+86-512-63627980 Fax:+86-512-63627981

AEON TECH (SHANGHAI) CO.,LTD(CHINA)

普翔電子貿易(上海)有限公司

Address:Flat 501,5F,Build 27, NO.68,Guiqing Road, Huhui District, Shanghai,China

Tel:+86-21-64959151 Fax:+86-21-64959059

DONGGUAN PARNER TECH CO.,LTD.(CHINA)

東莞倍能電子有限公司

Address:Hupan Industrial District, Shida Road, Tai Ling Shan Town,

Dong Guan City, Guangdong, China

Tel:+86-769-81662366 Fax:+86-769-81602681

# *Contents*

<i>Item</i>	<i>Description</i>	<i>Page</i>
1. ....	天線規格表	..... 1
2. ....	成品圖	..... 2
3. ....	測試報告	..... 3~4
4. ....	<b>Cable</b> 規格	..... 5~7
5. ....	<b>SGS</b> 測試	..... 8~18
6. ....	<b>RoHS</b> 排外條款	..... 19

# PIFA Antenna Assembly

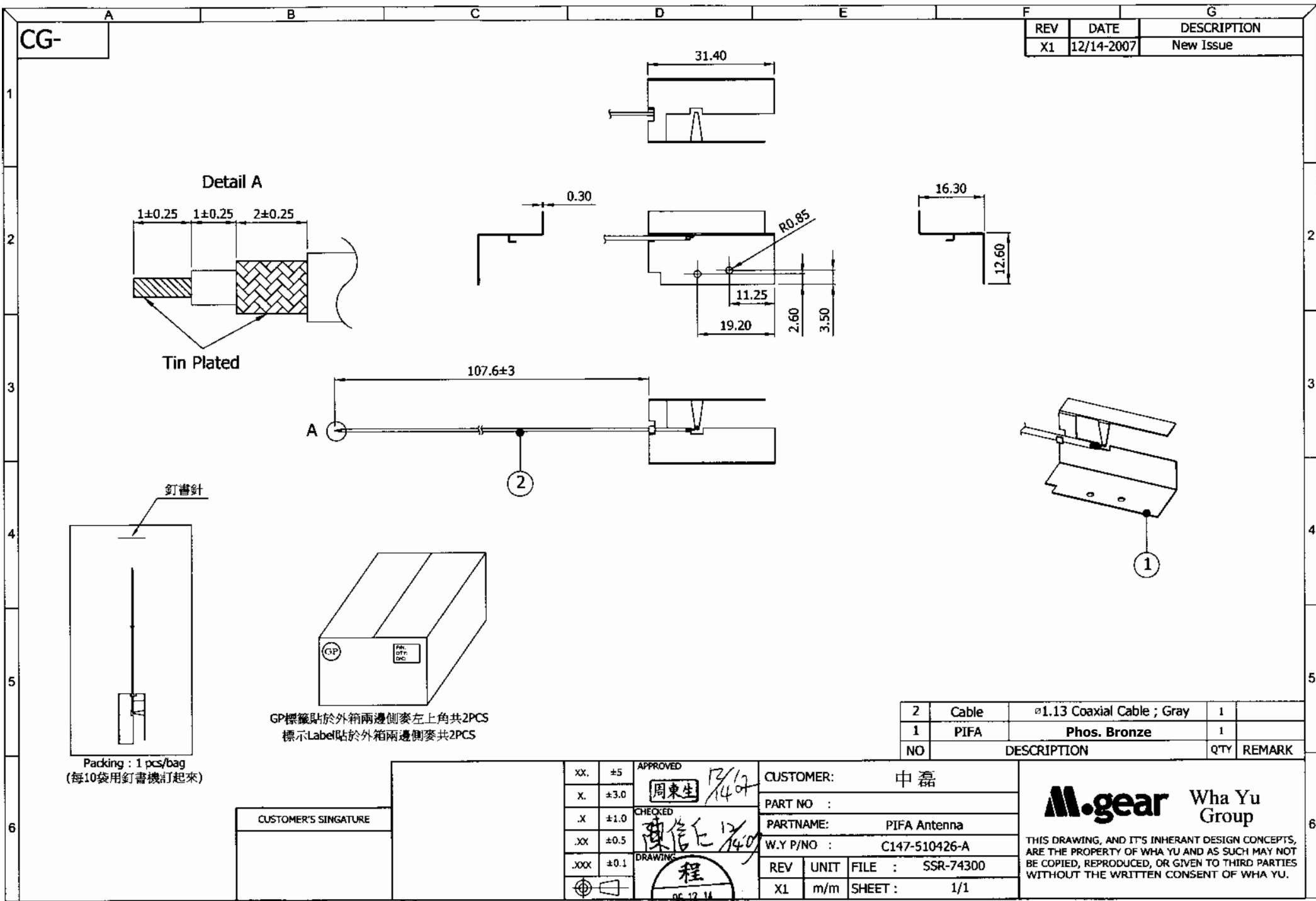
## Specification

### 1. Electrical Properties :

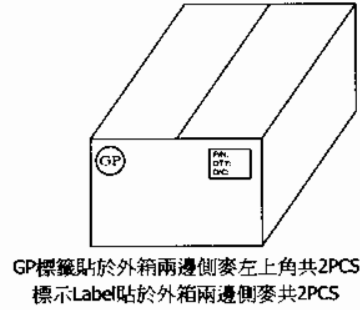
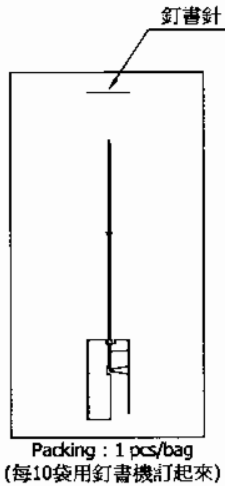
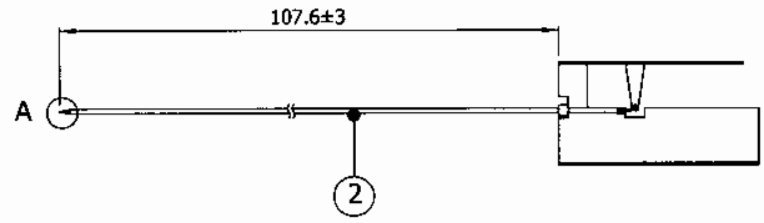
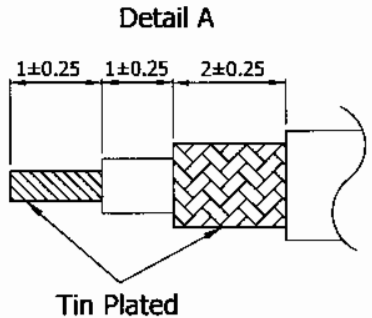
- 1.1 Frequency Range.....2.4GHz ~ 2.5GHz
- 1.2 Impedance ..... 50  $\Omega$  Nominal
- 1.3 VSWR .....1.92 Max.
- 1.4 Return Loss.....-10 dB Max.
- 1.5 Efficiency.....50%
- 1.6 Peak Gain.....2.9dBi
- 1.7 Polarization.....Linear
- 1.8 Admitted Power..... 1W

### 2. Physical Properties :

- 2.1 Cable..... $\phi$  1.13mm Coaxial Cable
- 2.2 Operating Temp. ....-20°C ~ +65°C
- 2.3 Storage Temp. ....-30°C ~ +75°C



REV	DATE	DESCRIPTION
X1	12/14-2007	New Issue



NO	DESCRIPTION	QTY	REMARK
2	Cable	1	φ1.13 Coaxial Cable ; Gray
1	PIFA	1	Phos. Bronze

CUSTOMER'S SIGNATURE	XX. ±5	APPROVED	CUSTOMER: 中磊
	X. ±3.0	周東生 12/14/07	
	.X ±1.0	CHECKED	
	.XX ±0.5	陳信仁 12/14/07	
	.XXX ±0.1	DRAWING	
		程	PART NO :
		06.12.14	PARTNAME: PIFA Antenna
		淑娟	W.Y P/NO : C147-510426-A
			REV UNIT FILE : SSR-74300
			X1 m/m SHEET : 1/1

**M.gear** Wha Yu Group

THIS DRAWING, AND ITS INHERANT DESIGN CONCEPTS, ARE THE PROPERTY OF WHA YU AND AS SUCH MAY NOT BE COPIED, REPRODUCED, OR GIVEN TO THIRD PARTIES WITHOUT THE WRITTEN CONSENT OF WHA YU.

## PIFA Antenna Assembly

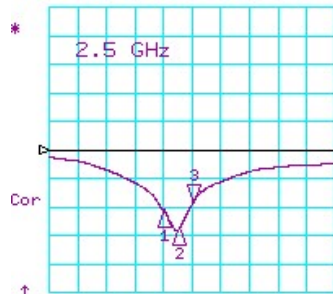
P/NO : C147-510426-A(SSR-74300)

SPEC : 2.4GHz~2.5GHz

S11:2.4~2.5GHz (Ant1)

S22:2.4~2.5GHz (Ant2)

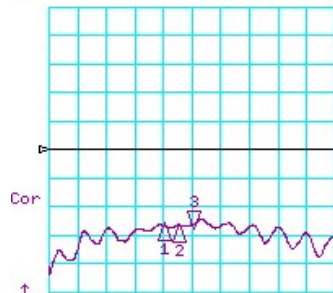
CH1 LOG 10 dB/ REF 0 dB  
S11 3\*-18.634 dB 2 500.000 000 MHz



CH1 Markers  
1\*-21.155 dB  
2.40000 GHz  
2\*-27.848 dB  
2.45000 GHz

START 2000.000 MHz STOP 3000.000 MHz

CH3 LOG 10 dB/ REF 0 dB  
S12 3\*-27.569 dB 2 500.000 000 MHz

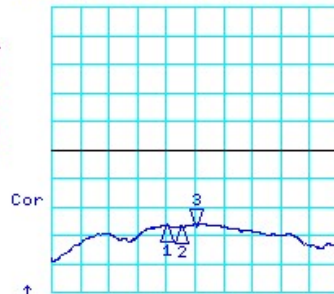


CH3 Markers  
1\*-26.084 dB  
2.40000 GHz  
2\*-26.793 dB  
2.45000 GHz

START 2000.000 MHz STOP 3000.000 MHz

9 Nov 2007 08:09:39

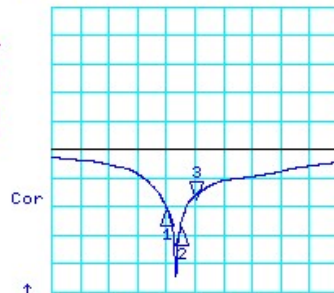
CH2 LOG 10 dB/ REF 0 dB  
S21 3\*-27.226 dB 2 500.000 000 MHz



CH2 Markers  
1\*-26.613 dB  
2.40000 GHz  
2\*-27.127 dB  
2.45000 GHz

START 2000.000 MHz STOP 3000.000 MHz

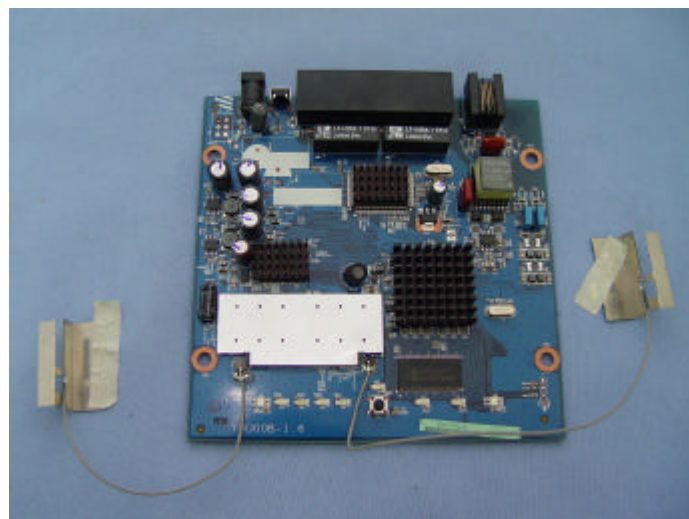
CH4 LOG 10 dB/ REF 0 dB  
S22 3\*-17.515 dB 2 500.000 000 MHz



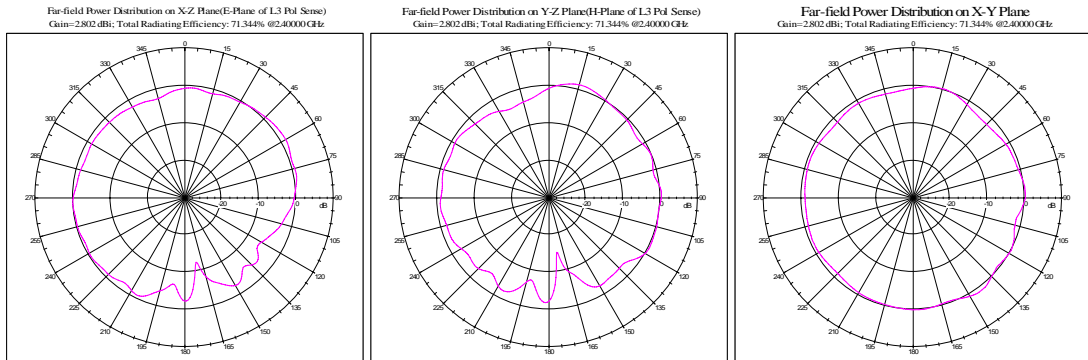
CH4 Markers  
1\*-21.167 dB  
2.40000 GHz  
2\*-27.627 dB  
2.45000 GHz

START 2000.000 MHz STOP 3000.000 MHz

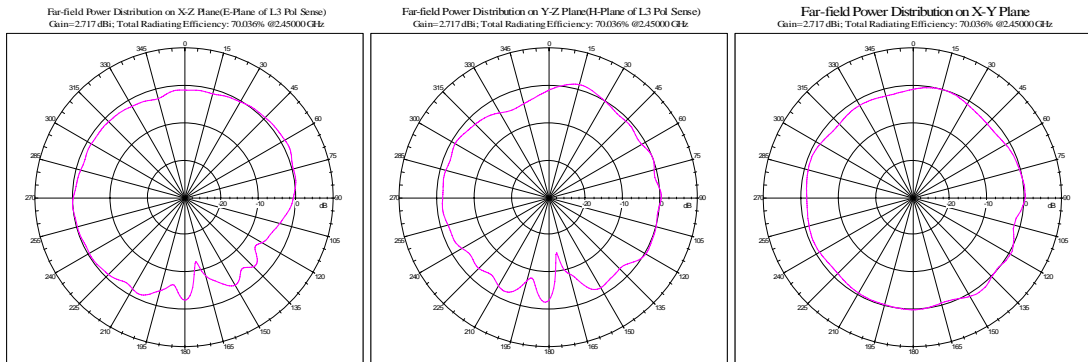
### PIFA Antenna Appearance



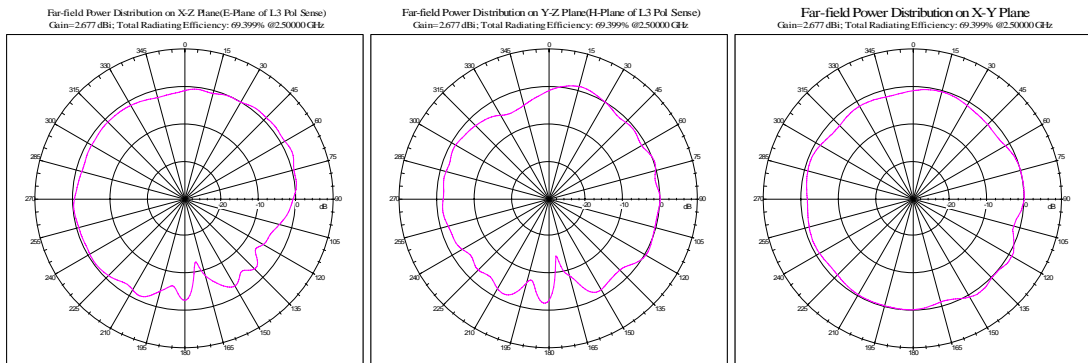
Ant2 Gain Table 2.4~2.5GHz 場型



2.4GHz Gain=2.802dBi Efficiency=71.344%



2.45GHz Gain=2.717dBi Efficiency=70.036%



2.5GHz Gain=2.677dBi Efficiency=69.399%