



A D T

# SAR TEST REPORT

**REPORT NO.:** SA991004D02

**MODEL NO.:** M3260

**FCC ID:** Q87-M3260

**IC ID:** 3839A-M3260

**RECEIVED:** Oct. 04, 2010

**TESTED:** Jan. 19 ~ Jan. 20, 2011

**ISSUED:** Jan. 24, 2011

**APPLICANT:** Cisco-Linksys LLC

**ADDRESS:** 121 Theory Drive , Irvine California 92617 United States

**ISSUED BY:** Bureau Veritas Consumer Products Services (H.K.) Ltd., Taoyuan Branch

**LAB ADDRESS:** No. 47, 14th Ling, Chia Pau Tsuen, Lin Kou Hsiang, Taipei Hsien 244, Taiwan, R.O.C.

**TEST LOCATION:** No. 19, Hwa Ya 2nd Rd, Wen Hwa Tsuen, Kwei Shan Hsiang, Taoyuan Hsien 333, Taiwan, R.O.C.

This test report consists of 31 pages in total. It may be duplicated completely for legal use with the approval of the applicant. It should not be reproduced except in full, without the written approval of our laboratory. The client should not use it to claim product, certification, approval or endorsement by TAF or any government agency. The test results in the report only apply to the tested sample.





## TABLE OF CONTENTS

RELEASE CONTROL RECORD.....	3
1. CERTIFICATION .....	4
2. GENERAL INFORMATION .....	5
2.1 GENERAL DESCRIPTION OF EUT.....	5
2.2 GENERAL DESCRIPTION OF APPLIED STANDARDS.....	7
2.3 GENERAL INFORMATION OF THE SAR SYSTEM .....	8
2.4 TEST EQUIPMENT .....	11
2.5 GENERAL DESCRIPTION OF THE SPATIAL PEAK SAR EVALUATION .....	12
2.6 DESCRIPTION OF SUPPORT UNITS.....	15
3. DESCRIPTION OF ANTENNA LOCATION .....	16
4. RECIPES FOR TISSUE SIMULATING LIQUIDS.....	17
5. SYSTEM VALIDATION.....	22
5.1. TEST PROCEDURE .....	22
5.2. VALIDATION RESULTS .....	23
5.3. SYSTEM VALIDATION UNCERTAINTIES .....	24
6. TEST RESULTS .....	25
6.1 TEST PROCEDURES.....	25
6.2 CONDUCTED POWER.....	27
6.3 DESCRIPTION OF TEST CONDITION.....	27
6.4 MEASURED SAR RESULT.....	28
6.5 POWER DRIFT TABLE .....	29
6.6 SAR LIMITS .....	30
6. INFORMATION ON THE TESTING LABORATORIES.....	31
APPENDIX A: TEST CONFIGURATIONS AND TEST DATA	
APPENDIX B: ADT SAR MEASUREMENT SYSTEM	
APPENDIX C: PHOTOGRAPHS OF SYSTEM VALIDATION	
APPENDIX D: SYSTEM CERTIFICATE & CALIBRATION	



A D T

## RELEASE CONTROL RECORD

ISSUE NO.	REASON FOR CHANGE	DATE ISSUED
Original release	N/A	Jan. 24, 2011



A D T

## 1. CERTIFICATION

**PRODUCT:** Digital Video Recorder  
**MODEL:** M3260  
**BRAND:** CISCO  
**APPLICANT:** Cisco-Linksys LLC  
**TESTED:** Jan. 19 ~ Jan. 20, 2011  
**TEST SAMPLE:** ENGINEERING SAMPLE  
**STANDARDS:** **FCC Part 2 (Section 2.1093)**  
**FCC OET Bulletin 65, Supplement C (01-01)**  
**RSS-102 Issue 4 (2010-03)**

The above equipment (Model: M3260) has been tested by **Bureau Veritas Consumer Products Services (H.K.) Ltd., Taoyuan Branch**, and found compliance with the requirement of the above standards. The test record, data evaluation & Equipment Under Test (EUT) configurations represented herein are true and accurate accounts of the measurements of the sample's EMC characteristics under the conditions specified in this report.

PREPARED BY : Andrea Hsia , DATE: Jan. 24, 2011  
Andrea Hsia / Specialist

APPROVED BY : Gary Chang , DATE: Jan. 24, 2011  
Gary Chang / Assistant Manager



## 2. GENERAL INFORMATION

### 2.1 GENERAL DESCRIPTION OF EUT

<b>EUT</b>	Digital Video Recorder
<b>MODEL NO.</b>	M3260
<b>FCC ID</b>	Q87-M3260
<b>IC ID</b>	3839A-M3260
<b>NOMINAL VOLTAGE</b>	3.7Vdc from battery 5Vdc from AC adapter or host equipment (Charging only)
<b>MODULATION TYPE</b>	CCK, DQPSK, DBPSK for DSSS 64QAM, 16QAM, QPSK, BPSK for OFDM
<b>MODULATION TECHNOLOGY</b>	DSSS, OFDM
<b>TRANSFER RATE</b>	802.11b: 11.0/ 5.5/ 2.0/ 1.0Mbps 802.11g: 54.0/ 48.0/ 36.0/ 24.0/ 18.0/ 12.0/ 9.0/ 6.0Mbps 802.11a: 54.0/ 48.0/ 36.0/ 24.0/ 18.0/ 12.0/ 9.0/ 6.0Mbps 802.11n: up to 22Mbps
<b>OPERATING FREQUENCY</b>	<b>2.4GHz:</b> 2412 ~ 2472MHz <b>5.0GHz:</b> 5745 ~ 5805MHz
<b>NUMBER OF CHANNEL</b>	<b>2.4GHz:</b> 11 for 802.11b, 802.11g, 802.11n (20MHz) 7 for 802.11n (40MHz) <b>5.0GHz:</b> 5 for 802.11a, 802.11n (20MHz) 2 for 802.11n (40MHz)
<b>MAXIMUM SAR (1g)</b>	<b>2.4GHz:</b> 0.378W/kg <b>5.0GHz:</b> 1.490W/kg
<b>ANTENNA TYPE</b>	Refer to note below
<b>ANTENNA CONNECTER</b>	Refer to note below
<b>DATA CABLE</b>	Shielded USB cable (1.2 m) Shielded HDMI cable (1.2 m) with two ferrite cores
<b>I/O PORTS</b>	Refer to user's manual
<b>ACCESSORY DEVICES</b>	Refer to note below

#### NOTE:

- The test data are separated into following test reports.

	REFERENCE REPORT
WLAN 802.11b/g, 802.11n	SA991004D02
WLAN 802.11a, 802.11n (5745~5805 MHz)	
WLAN 802.11a, 802.11n (5180~ 5240MHz)	SA991004D02-1

2. The EUT incorporates a SISO function. Physically, the EUT provides one completed transmitter and one receiver.

MODULATION MODE	TX FUNCTION
802.11b	1TX
802.11g	1TX
802.11a	1TX
802.11n (20MHz)	1TX
802.11n (40MHz)	1TX

3. The following antennas were applied to the EUT:

Type	Connector	Gain (dBi)		
		2.4G	5.0G (Band 4)	5.0G (Band 1)
PIFA	U.FL	1.0	3.5	4.8

4. The EUT consumes power from the following AC adapter:

BRAND	MODEL NO.	SPEC.
Pure Digital Technologies, Inc	APA1B	AC I/P: 100-240V, 50-60H, 0.15A DC O/P: 5V, 1A AC 2-pin, Non-shielded DC (1.2m) with one ferrite core

5. The EUT's battery can be charged via USB connector. A computer or adapter can be used as charging device. The USB function on this product is for battery charging only, no data transmitting and/or receiving function involved.
6. The above EUT information is declared by manufacturer and for more detailed features description, please refer to the manufacturer's specifications or user's manual.



A D T

## **2.2 GENERAL DESCRIPTION OF APPLIED STANDARDS**

According to the specifications of the manufacturer, this product must comply with the requirements of the following standards:

**FCC Part 2 (2.1093)**

**FCC OET Bulletin 65, Supplement C (01- 01)**

**RSS-102 Issue 4 (2010-03)**

**IEEE 1528-2003**

All test items have been performed and recorded as per the above standards.

## 2.3 GENERAL INFORMATION OF THE SAR SYSTEM

DASY4 (software 4.7 Build 80) consists of high precision robot, probe alignment sensor, phantom, robot controller, controlled measurement server and near-field probe. The robot includes six axes that can move to the precision position of the DASY4 software defined. The DASY4 software can define the area that is detected by the probe. The robot is connected to controlled box. Controlled measurement server is connected to the controlled robot box. The DAE includes amplifier, signal multiplexing, AD converter, offset measurement and surface detection. It is connected to the Electro-optical coupler (ECO). The ECO performs the conversion from the optical into digital electric signal of the DAE and transfers data to the PC.

### EX3DV4 ISOTROPIC E-FIELD PROBE

<b>CONSTRUCTION</b>	Symmetrical design with triangular core Built-in shielding against static charges PEEK enclosure material (resistant to organic solvents, e.g., DGBE)
<b>FREQUENCY</b>	10 MHz to > 6 GHz Linearity: $\pm 0.2$ dB (30 MHz to 6 GHz)
<b>DIRECTIVITY</b>	$\pm 0.3$ dB in HSL (rotation around probe axis) $\pm 0.5$ dB in tissue material (rotation normal to probe axis)
<b>DYNAMIC RANGE</b>	10 $\mu$ W/g to > 100 mW/g Linearity: $\pm 0.2$ dB (noise: typically < 1 $\mu$ W/g)
<b>DIMENSIONS</b>	Overall length: 330 mm (Tip: 20 mm) Tip diameter: 2.5 mm (Body: 12 mm) Typical distance from probe tip to dipole centers: 1 mm
<b>APPLICATION</b>	High precision dosimetric measurements in any exposure scenario (e.g., very strong gradient fields). Only probe which enables compliance testing for frequencies up to 6 GHz with precision of better 30%.

#### NOTE

1. The Probe parameters have been calibrated by the SPEAG. Please reference "APPENDIX D" for the Calibration Certification Report.
2. For frequencies above 800MHz, calibration in a rectangular wave-guide is used, because wave-guide size is manageable.
3. For frequencies below 800MHz, temperature transfer calibration is used because the wave-guide size becomes relatively large.





## **TWIN SAM V4.0**

### **CONSTRUCTION**

The shell corresponds to the specifications of the Specific Anthropomorphic Mannequin (SAM) phantom defined in IEEE 1528-2003, EN 62209-1 and IEC 62209. It enables the dosimetric evaluation of left and right hand phone usage as well as body mounted usage at the flat phantom region. A cover prevents evaporation of the liquid. Reference markings on the phantom allow the complete setup of all predefined phantom positions and measurement grids by manually teaching three points with the robot.

### **SHELL THICKNESS**

2 ± 0.2mm

### **FILLING VOLUME**

Approx. 25liters

### **DIMENSIONS**

Height: 810mm; Length: 1000mm; Width: 500mm

## **SYSTEM VALIDATION KITS:**

### **CONSTRUCTION**

Symmetrical dipole with 1/4 balun enables measurement of feedpoint impedance with NWA matched for use near flat phantoms filled with brain simulating solutions. Includes distance holder and tripod adaptor

### **CALIBRATION**

Calibrated SAR value for specified position and input power at the flat phantom in brain simulating solutions

### **FREQUENCY**

2450, 5800MHz

### **RETURN LOSS**

> 20dB at specified validation position

### **POWER CAPABILITY**

> 100W (f < 1GHz); > 40W (f > 1GHz)

### **OPTIONS**

Dipoles for other frequencies or solutions and other calibration conditions upon request

## DEVICE HOLDER FOR SAM TWIN PHANTOM

### CONSTRUCTION

The device holder for the mobile phone device is designed to cope with different positions given in the standard. It has two scales for the device rotation (with respect to the body axis) and the device inclination (with respect to the line between the ear reference points). The rotation centers for both scales are the ear reference point (ERP). Thus the device needs no repositioning when changing the angles. The holder has been made out of low-loss POM material having the following dielectric parameters: relative permittivity  $\epsilon = 3$  and loss tangent  $\delta = 0.02$ . The amount of dielectric material has been reduced in the closest vicinity of the device, since measurements have suggested that the influence of the clamp on the test results could thus be lowered. The device holder for the portable device makes up of the polyethylene foam. The dielectric parameters of material close to the dielectric parameters of the air.

## DATA ACQUISITION ELECTRONICS

### CONSTRUCTION

The data acquisition electronics (DAE3) consists of a highly sensitive electrometer grade preamplifier with auto-zeroing, a channel and gain-switching multiplex, a fast 16 bit AD converter and a command decoder and control logic unit. Transmission to the measurement server is accomplished through an optical downlink for data and status information as well as an optical uplink for commands and the clock. The mechanical probe is mounting device includes two different sensor systems for frontal and sideways probe contacts. They are used for mechanical surface detection and probe collision detection. The input impedance of the DAE3 box is 200M $\Omega$ ; the inputs are symmetrical and floating. Common mode rejection is above 80 dB.



## 2.4 TEST EQUIPMENT

### FOR SAR MEASUREMENT

ITEM	NAME	BRAND	TYPE	SERIES NO.	DATE OF CALIBRATION	DUE DATE OF CALIBRATION
1	SAM Phantom	S & P	QD000 P40 CA	TP-1202	NA	NA
2	Signal Generator	Agilent	E8257C	MY43320668	Feb. 23, 2010	Feb. 22, 2011
3	E-Field Probe	S & P	EX3DV4	3578	Jun. 22, 2010	Jun. 21, 2011
4	DAE	S & P	DAE 3	579	Sep. 20, 2010	Sep. 19, 2011
5	Robot Positioner	Staubli Unimation	NA	NA	NA	NA
6	Validation Dipole	S & P	D2450V2	737	Feb. 19, 2010	Feb. 18, 2011
7	Validation Dipole	S & P	D5GHzV2	1018	Jan. 22, 2010	Jan. 21, 2011

**NOTE:** Before starting the measurement, all test equipment shall be warmed up for 30min.

### FOR TISSUE PROPERTY

ITEM	NAME	BRAND	TYPE	SERIES NO.	DATE OF CALIBRATION	DUE DATE OF CALIBRATION
1	Network Analyzer	Agilent	E5071C	MY46104190	Apr. 06, 2010	Apr. 05, 2011
2	Dielectric Probe	Agilent	85070D	US01440176	NA	NA

**NOTE:**

1. Before starting, all test equipment shall be warmed up for 30min.
2. The tolerance (k=1) specified by Agilent for general dielectric measurements, deriving from inaccuracies in the calibration data, analyzer drift, and random errors, are usually  $\pm 2.5\%$  and  $\pm 5\%$  for measured permittivity and conductivity, respectively. However, the tolerances for the conductivity is smaller for material with large loss tangents, i.e., less than  $\pm 2.5\%$  (k=1). It can be substantially smaller if more accurate methods are applied.

## 2.5 GENERAL DESCRIPTION OF THE SPATIAL PEAK SAR EVALUATION

The DASY4 post-processing software (SEMCAD) automatically executes the following procedures to calculate the field units from the micro-volt readings at the probe connector. The parameters used in the evaluation are stored in the configuration modules of the software:

Probe parameters:	- Sensitivity	Norm <sub>i</sub> , a <sub>i0</sub> , a <sub>i1</sub> , a <sub>i2</sub>
	- Conversion factor	ConvF <sub>i</sub>
	- Diode compression point	dcp <sub>i</sub>
Device parameters:	- Frequency	F
	- Crest factor	Cf
Media parameters:	- Conductivity	σ
	- Density	ρ

The first step of the evaluation is a linearization of the filtered input signal to account for the compression characteristics of the detector diode. The compensation depends on the input signal, the diode type and the DC-transmission factor from the diode to the evaluation electronics. If the exciting field is pulsed, the crest factor of the signal must be known to correctly compensate for peak power. The formula for each channel can be given as:

$$V_i = U_i + U_i^2 \cdot \frac{cf}{dcp_i}$$

V <sub>i</sub>	=compensated signal of channel i	(i = x, y, z)
U <sub>i</sub>	=input signal of channel i	(i = x, y, z)
Cf	=crest factor of exciting field	(DASY parameter)
dcp <sub>i</sub>	=diode compression point	(DASY parameter)

From the compensated input signals the primary field data for each channel can be evaluated:

$$\text{E-field probes: } E_i = \sqrt{\frac{V_i}{\text{Norm}_i \cdot \text{ConvF}}}$$

$$\text{H-field probes: } H_i = \sqrt{V_i} \cdot \frac{a_{i0} + a_{i1}f + a_{i2}f^2}{f}$$

- $V_i$  = compensated signal of channel I (i = x, y, z)  
 $\text{Norm}_i$  = sensor sensitivity of channel i  $\mu\text{V}/(\text{V/m})^2$  for E-field Probes (i = x, y, z)  
 $\text{ConvF}$  = sensitivity enhancement in solution  
 $a_{ij}$  = sensor sensitivity factors for H-field probes  
 $F$  = carrier frequency [GHz]  
 $E_i$  = electric field strength of channel i in V/m  
 $H_i$  = magnetic field strength of channel i in A/m

The RSS value of the field components gives the total field strength (Hermitian magnitude):

$$E_{tot} = \sqrt{E_x^2 + E_y^2 + E_z^2}$$

The primary field data are used to calculate the derived field units.

$$SAR = E_{tot}^2 \cdot \frac{\sigma}{\rho \cdot 1'000}$$

- $SAR$  = local specific absorption rate in mW/g  
 $E_{tot}$  = total field strength in V/m  
 $\sigma$  = conductivity in [mho/m] or [Siemens/m]  
 $\rho$  = equivalent tissue density in g/cm<sup>3</sup>

Note that the density is set to 1, to account for actual head tissue density rather than the density of the tissue simulating liquid. The entire evaluation of the spatial peak values is performed within the Post-processing engine (SEMCAD). The system always gives the maximum values for the 1g and 10g cubes. The algorithm to find the cube with highest averaged SAR is divided into the following stages:

1. The extraction of the measured data (grid and values) from the Zoom Scan
2. The calculation of the SAR value at every measurement point based on all stored data (A/D values and measurement parameters)
3. The generation of a high-resolution mesh within the measured volume
4. The interpolation of all measured values from the measurement grid to the high-resolution grid
5. The extrapolation of the entire 3-D field distribution to the phantom surface over the distance from sensor to surface
6. The calculation of the averaged SAR within masses of 1g and 10g.

The probe is calibrated at the center of the dipole sensors that is located 1 to 2.7mm away from the probe tip. During measurements, the probe stops shortly above the phantom surface, depending on the probe and the surface detecting system. Both distances are included as parameters in the probe configuration file. The software always knows exactly how far away the measured point is from the surface. As the probe cannot directly measure at the surface, the values between the deepest measured point and the surface must be extrapolated. The angle between the probe axis and the surface normal line is less than 30 degree.

The maximum search is automatically performed after each area scan measurement. It is based on splines in two or three dimensions. The procedure can find the maximum for most SAR distributions even with relatively large grid spacing. After the area scanning measurement, the probe is automatically moved to a position at the interpolated maximum. The following scan can directly use this position for reference, e.g., for a finer resolution grid or the cube evaluations. The 1g and 10g peak evaluations are only available for the predefined cube 7 x 7 x 7 scans. The routines are verified and optimized for the grid dimensions used in these cube measurements. The measured volume of 30 x 30 x 30mm contains about 30g of tissue. The first procedure is an extrapolation (incl. boundary correction) to get the points between the lowest measured plane and the surface. The next step uses 3D interpolation to get all points within the measured volume in a 1mm grid (42875 points). In the last step, a 1g cube is placed numerically into the volume and its averaged SAR is calculated. This cube is then moved around until the highest averaged SAR is found. If the highest SAR is found at the edge of the measured volume, the system will issue a warning: higher SAR values might be found outside of the measured volume. In that case the cube measurement can be repeated, using the new interpolated maximum as the center.

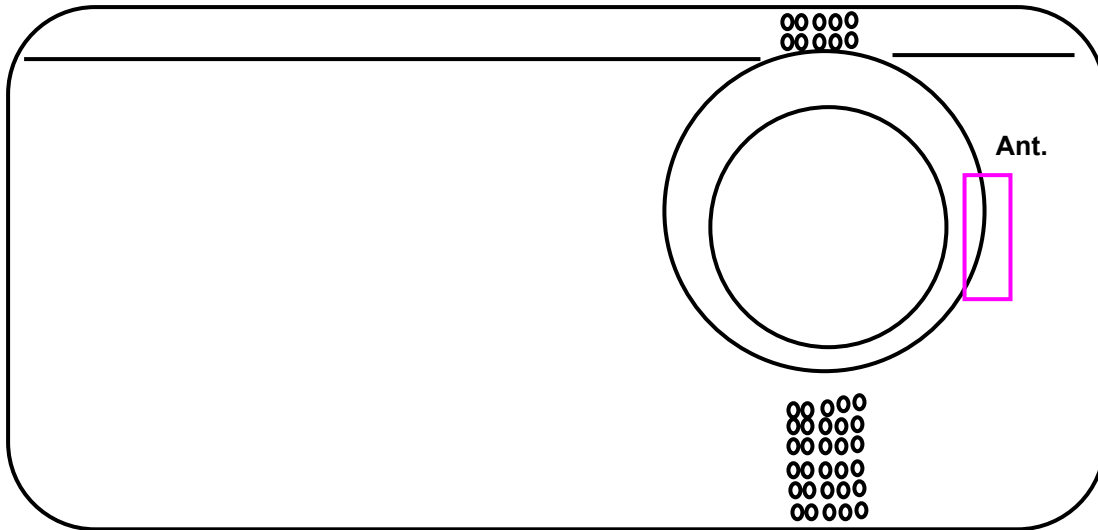
## 2.6 DESCRIPTION OF SUPPORT UNITS

The EUT has been tested as an independent unit.



A D T

### 3. DESCRIPTION OF ANTENNA LOCATION





#### 4. RECIPES FOR TISSUE SIMULATING LIQUIDS

For the measurement of the field distribution inside the SAM phantom, the phantom must be filled with 25 liters of tissue simulation liquid.

The following ingredients are used :

- **WATER-** Deionized water (pure H<sub>2</sub>O), resistivity  $\approx 16$  M - as basis for the liquid
- **DGMBE-** Diethylenglycol-monobuthyl ether (DGMBE), Fluka Chemie GmbH, CAS # 112-34-5 - to reduce relative permittivity

**THE RECIPES FOR 2450MHz SIMULATING LIQUID TABLE**

INGREDIENT	BODY SIMULATING LIQUID 2450MHz (MSL-2450)
Water	69.83%
DGMBE	30.17%
Dielectric Parameters at 22°C	f= 2450MHz $\epsilon = 52.7 \pm 5\%$ $\sigma = 1.95 \pm 5\%$ S/m

#### THE INFORMATION FOR 5GHz SIMULATING LIQUID

**The 5GHz liquids was purchased from SPEAG.**

**Body liquid model:** HSL 5800, P/N: SL AAH 5800 AA

**Head liquid model:** M 5800, P/N: SL AAM 580 AD

**5GHz liquids contain the following ingredients:**

Water 64 - 78%

Mineral Oil 11 - 18%

Emulsifiers 9 - 15%

Additives and Salt 2 - 3%

Testing the liquids using the Agilent Network Analyzer E8358A and Agilent Dielectric Probe Kit 85070D. The testing procedure is following as

1. Turn Network Analyzer on and allow at least 30min. warm up.
2. Mount dielectric probe kit so that interconnecting cable to Network Analyzer will not be moved during measurements or calibration.
3. Pour de-ionized water and measure water temperature ( $\pm 1^\circ$ ).
4. Set water temperature in Agilent-Software (Calibration Setup).
5. Perform calibration.
6. Validate calibration with dielectric material of known properties (e.g. polished ceramic slab with  $>8\text{mm}$  thickness  $\epsilon' = 10.0$ ,  $\epsilon'' = 0.0$ ). If measured parameters do not fit within tolerance, repeat calibration ( $\pm 0.2$  for  $\epsilon'$ :  $\pm 0.1$  for  $\epsilon''$ ).
7. Conductivity can be calculated from  $\epsilon''$  by  $\sigma = \omega \epsilon_0 \epsilon'' = \epsilon'' f [\text{GHz}] / 18$ .
8. Measure liquid shortly after calibration. Repeat calibration every hour.
9. Stir the liquid to be measured. Take a sample ( $\sim 50\text{ml}$ ) with a syringe from the center of the liquid container.
10. Pour the liquid into a small glass flask. Hold the syringe at the bottom of the flask to avoid air bubbles.
11. Put the dielectric probe in the glass flask. Check that there are no air bubbles in front of the opening in the dielectric probe kit.
12. Perform measurements.
13. Adjust medium parameters in DASY4 for the frequencies necessary for the measurements ('Setup Config', select medium (e.g. Brain 900MHz) and press 'Option'-button.
14. Select the current medium for the frequency of the validation (e.g. Setup Medium Brain 900MHz).



A D T

### FOR SIMULATING LIQUID

<b>LIQUID TYPE</b>		MSL-2450			
<b>SIMULATING LIQUID TEMP.</b>		20.5			
<b>TEST DATE</b>		Jan. 20, 2011			
<b>TESTED BY</b>		Morrison Huang			
<b>FREQ. (MHz)</b>	<b>LIQUID PARAMETER</b>	<b>STANDARD VALUE</b>	<b>MEASUREMENT VALUE</b>	<b>ERROR PERCENTAGE (%)</b>	<b>LIMIT(%)</b>
2437.0	Permittivity ( $\epsilon$ )	52.72	53.64	1.75	±5
2450.0		52.70	53.56	1.63	
2437.0	Conductivity ( $\sigma$ ) S/m	1.94	1.97	1.55	
2450.0		1.95	1.98	1.54	



A D T

LIQUID TYPE		MSL-5800			
SIMULATING LIQUID TEMP.		21.2			
TEST DATE		Jan. 18, 2011			
TESTED BY		Morrison Huang			
FREQ. (MHz)	LIQUID PARAMETER	STANDARD VALUE	MEASUREMENT VALUE	ERROR PERCENTAGE (%)	LIMIT(%)
5180	Permittivity ( $\epsilon$ )	49.04	50.25	2.47	±5
5190		49.03	50.16	2.30	
5200		49.01	50.11	2.24	
5230		48.97	50.06	2.23	
5240		48.96	50.00	2.12	
5745		48.27	49.05	1.62	
5755		48.26	49.03	1.60	
5785		48.22	48.98	1.58	
5795		48.21	48.96	1.56	
5800		48.20	48.92	1.49	
5805		48.19	48.89	1.45	
5180	Conductivity ( $\sigma$ ) S/m	5.28	5.19	-1.70	
5190		5.29	5.20	-1.70	
5200		5.30	5.21	-1.70	
5230		5.33	5.26	-1.31	
5240		5.35	5.27	-1.50	
5745		5.94	6.02	1.35	
5755		5.95	6.03	1.34	
5785		5.98	6.07	1.51	
5795		5.99	6.08	1.50	
5800		6.00	6.10	1.67	
5805		6.01	6.12	1.83	



A D T

<b>LIQUID TYPE</b>		MSL-5800			
<b>SIMULATING LIQUID TEMP.</b>		21.2			
<b>TEST DATE</b>		Jan. 19, 2011			
<b>TESTED BY</b>		Morrison Huang			
<b>FREQ. (MHz)</b>	<b>LIQUID PARAMETER</b>	<b>STANDARD VALUE</b>	<b>MEASUREMENT VALUE</b>	<b>ERROR PERCENTAGE (%)</b>	<b>LIMIT(%)</b>
5180	Permittivity ( $\epsilon$ )	49.04	50.40	2.77	±5
5190		49.03	50.31	2.61	
5200		49.01	50.26	2.55	
5230		48.97	50.21	2.53	
5240		48.96	50.15	2.43	
5745		48.27	49.20	1.93	
5755		48.26	49.18	1.91	
5785		48.22	49.13	1.89	
5795		48.21	49.11	1.87	
5800		48.20	49.07	1.80	
5805		48.19	49.04	1.76	
5180	Conductivity ( $\sigma$ ) S/m	5.28	5.21	-1.33	
5190		5.29	5.22	-1.32	
5200		5.30	5.23	-1.32	
5230		5.33	5.28	-0.94	
5240		5.35	5.29	-1.12	
5745		5.94	6.04	1.68	
5755		5.95	6.05	1.68	
5785		5.98	6.09	1.84	
5795		5.99	6.10	1.84	
5800		6.00	6.12	2.00	
5805		6.01	6.14	2.16	

## 5. SYSTEM VALIDATION

The system validation was performed in the flat phantom with equipment listed in the following table. Since the SAR value is calculated from the measured electric field, dielectric constant and conductivity of the body tissue and the SAR is proportional to the square of the electric field. So, the SAR value will be also proportional to the RF power input to the system validation dipole under the same test environment. In our system validation test, 250mW RF input power was used.

### 5.1. TEST PROCEDURE

Before the system performance check, we need only to tell the system which components (probe, medium, and device) are used for the system performance check; the system will take care of all parameters. The dipole must be placed beneath the flat section of the SAM Twin Phantom with the correct distance holder in place. The distance holder should touch the phantom surface with a light pressure at the reference marking (little cross) and be oriented parallel to the long side of the phantom. Accurate positioning is not necessary, since the system will search for the peak SAR location, except that the dipole arms should be parallel to the surface. The device holder for mobile phones can be left in place but should be rotated away from the dipole.

1. The "Power Reference Measurement" and "Power Drift Measurement" jobs are located at the beginning and end of the batch process. They measure the field drift at one single point in the liquid over the complete procedure. The indicated drift is mainly the variation of the amplifier output power. If it is too high (above  $\pm 0.1$  dB), the system performance check should be repeated; some amplifiers have very high drift during warm-up. A stable amplifier gives drift results in the DASY system below  $\pm 0.02$ dB.
2. The "Surface Check" job tests the optical surface detection system of the DASY system by repeatedly detecting the surface with the optical and mechanical surface detector and comparing the results. The output gives the detecting heights of both systems, the difference between the two systems and the standard deviation of the detection repeatability. Air bubbles or refraction in the liquid due to separation of the sugar-water mixture gives poor repeatability (above  $\pm 0.1$ mm). In that case it is better to abort the system performance check and stir the liquid.

3. The "Area Scan" job measures the SAR above the dipole on a plane parallel to the surface. It is used to locate the approximate location of the peak SAR. The proposed scan uses large grid spacing for faster measurement; due to the symmetric field, the peak detection is reliable. If a finer graphic is desired, the grid spacing can be reduced. Grid spacing and orientation have no influence on the SAR result.
4. The "Zoom Scan" job measures the field in a volume around the peak SAR value assessed in the previous "Area Scan" job (for more information see the application note on SAR evaluation).

About the validation dipole positioning uncertainty, the constant and low loss dielectric spacer is used to establish the correct distance between the top surface of the dipole and the bottom surface of the phantom, the error component introduced by the uncertainty of the distance between the liquid (i.e., phantom shell) and the validation dipole in the DASY4 system is less than  $\pm 0.1\text{mm}$ .

$$SAR_{tolerance} [\%] = 100 \times \left( \frac{(a + d)^2}{a^2} - 1 \right)$$

As the closest distance is 10mm, the resulting tolerance  $SAR_{tolerance}[\%]$  is <2%.

## 5.2. VALIDATION RESULTS

SYSTEM VALIDATION TEST OF SIMULATING LIQUID					
FREQUENCY (MHz)	REQUIRED SAR (mW/g)	MEASURED SAR (mW/g)	DEVIATION (%)	SEPARATION DISTANCE	TESTED DATE
MSL 2450	13.10 (1g)	13.1	0.00	10mm	Jan. 20, 2011
MSL 5800	7.54 (1g)	7.80	3.45	10mm	Jan. 18, 2011
MSL 5800	7.54 (1g)	8.02	6.37	10mm	Jan. 19, 2011

**NOTE:** Please see Appendix for the photo of system validation test.

### 5.3. SYSTEM VALIDATION UNCERTAINTIES

In the table below, the system validation uncertainty with respect to the analytically assessed SAR value of a dipole source as given in the IEEE 1528 standard is given. This uncertainty is smaller than the expected uncertainty for mobile phone measurements due to the simplified setup and the symmetric field distribution.

Error Description	Tolerance (±%)	Probability Distribution	Divisor	(C <sub>i</sub> )		Standard Uncertainty (±%)		(v <sub>i</sub> )
				(1g)	(10g)	(1g)	(10g)	
<b>Measurement System</b>								
Probe Calibration	6.55	Normal	1	1	1	6.55	6.55	∞
Axial Isotropy	0.25	Rectangular	√3	0.7	0.7	0.10	0.10	∞
Hemispherical Isotropy	1.30	Rectangular	√3	0.7	0.7	0.53	0.53	∞
Boundary effects	1.00	Rectangular	√3	1	1	0.58	0.58	∞
Linearity	0.30	Rectangular	√3	1	1	0.17	0.17	∞
System Detection Limits	1.00	Rectangular	√3	1	1	0.58	0.58	∞
Readout Electronics	0.30	Normal	1	1	1	0.30	0.30	∞
Response Time	0.80	Rectangular	√3	1	1	0.46	0.46	∞
Integration Time	2.60	Rectangular	√3	1	1	1.50	1.50	∞
RF Ambient Noise	3.00	Rectangular	√3	1	1	1.73	1.73	9
RF Ambient Reflections	3.00	Rectangular	√3	1	1	1.73	1.73	9
Probe Positioner	0.40	Rectangular	√3	1	1	0.23	0.23	∞
Probe Positioning	2.90	Rectangular	√3	1	1	1.67	1.67	∞
Max. SAR Eval.	1.00	Rectangular	√3	1	1	0.58	0.58	∞
<b>Test sample related</b>								
Sample positioning	1.90	Normal	1	1	1	1.90	1.90	4
Device holder uncertainty	2.80	Normal	1	1	1	2.80	2.80	4
Output power variation-SAR drift measurement	4.50	Rectangular	√3	1	1	2.60	2.60	1
<b>Dipole Related</b>								
Dipole Axis to Liquid Distance	1.60	Rectangular	√3	1	1	0.92	0.92	4
Input Power Drift	3.75	Rectangular	√3	1	1	2.17	2.17	1
<b>Phantom and Tissue parameters</b>								
Phantom Uncertainty	4.00	Rectangular	√3	1	1	2.31	2.31	∞
Liquid Conductivity (target)	5.00	Rectangular	√3	0.64	0.43	1.85	1.24	∞
Liquid Conductivity (measurement)	2.16	Normal	1	0.64	0.43	1.38	0.93	9
Liquid Permittivity (target)	5.00	Rectangular	√3	0.6	0.49	1.73	1.41	∞
Liquid Permittivity (measurement)	2.77	Normal	1	0.6	0.49	1.66	1.36	9
<b>Combined Standard Uncertainty</b>						<b>9.79</b>	<b>9.54</b>	
<b>Coverage Factor for 95%</b>						<b>Kp=2</b>		
<b>Expanded Uncertainty (K=2)</b>						<b>19.58</b>	<b>19.07</b>	

**NOTE:** About the system validation uncertainty assessment, please reference the section 7.



## 6. TEST RESULTS

### 6.1 TEST PROCEDURES

Use the software to control the EUT channel and transmission power. Then record the conducted power before the testing. Place the EUT to the specific test location. After the testing, must writing down the conducted power of the EUT into the report. The SAR value was calculated via the 3D spline interpolation algorithm that has been implemented in the software of DASY4 SAR measurement system manufactured and calibrated by SPEAG. According to the IEEE 1528 standards, the recommended procedure for assessing the peak spatial-average SAR value consists of the following steps:

- Power reference measurement
- Verification of the power reference measurement
- Area scan
- Zoom scan
- Power reference measurement

The area scan was performed for the highest spatial SAR location. The zoom scan with volume was performed for SAR value averaged over 1g and 10g spatial volumes.

In the zoom scan, the distance between the measurement point at the probe sensor location (geometric center behind the probe tip) and the phantom surface is 2mm and maintained at a constant distance of  $\pm 0.5\text{mm}$  during a zoom scan to determine peak SAR locations. The distance is 2mm between the first measurement point and the bottom surface of the phantom.

The measurement time is 0.5s at each point of the zoom scan. The probe boundary effect compensation shall be applied during the SAR test. Because of the tip of the probe to the Phantom surface separated distances are longer than half a tip probe diameter.

In the area scan, the separation distance is 2mm between the each measurement point and the phantom surface. The scan size shall be included the transmission portion of the EUT. The measurement time is the same as the zoom scan. At last the reference power drift shall be less than  $\pm 5\%$ .

## 6.2 CONDUCT ED POWER

TEST MODE		802.11b		802.11g		802.11n (20MHz)	
CHAN.	FREQ. (MHz)	PEAK (dBm)	AVG (dBm)	PEAK (dBm)	AVG (dBm)	PEAK (dBm)	AVG (dBm)
1	2412 (Low)	16.7	13.81	21.4	12.34	21.0	11.97
6	2437 (Mid.)	17.0	14.02	21.8	12.21	21.3	12.23
11	2462 (High)	17.0	13.98	21.5	12.43	21.5	12.45

TEST MODE		802.11n (40MHz)	
CHAN.	FREQ. (MHz)	PEAK (dBm)	AVG (dBm)
1	2422 (Low)	22.0	12.30
4	2437 (Mid.)	22.2	12.52
7	2452 (High)	22.5	12.68

NOTE: SAR is not required for 802.11g / 11n 20MHz / 11n 40MHz channels when the maximum average output power is less than ¼ dB higher than that measured on the corresponding 802.11b channels

TEST MODE		802.11a		802.11n (20MHz)	
CHAN.	FREQ. (MHz)	PEAK (dBm)	AVG (dBm)	PEAK (dBm)	AVG (dBm)
149	5745 (Low)	21.4	12.83	20.8	12.87
157	5785 (Mid.)	20.8	12.31	20.7	12.21
165	5805 (High)	20.3	12.37	20.4	12.46

TEST MODE		802.11n (40MHz)	
CHAN.	FREQ. (MHz)	PEAK (dBm)	AVG (dBm)
151	5755	21.2	12.73
159	5795	21.0	12.08

## 6.3 DESCRIPTION OF TEST CONDITION

TEST DATE	TEMPERATURE(°C)		HUMIDITY(%RH)	TESTED BY
	AIRBENT	LIQUID		
Jan. 20, 2011	21.7	20.5	55	Morrison Huang
Jan. 18, 2011	22.0	21.2	60	Morrison Huang
Jan. 19, 2011	22.3	21.2	60	Morrison Huang

## 6.4 MEASURED SAR RESULT

EUT to phantom	Body 0mm					
Position	Bottom	Front	Right Edge	Left Edge	Top Edge	Bottom Edge
<b>11b</b>						
CH6 / 2437MHz	0.378	0.045	0.209	0.088	0.117	0.019
<b>11a</b>						
CH149 / 5745MHz	1.490	0.108	0.087	0.174	0.197	0.031
CH157 / 5785MHz	1.270	-	-	-	-	-
CH161 / 5805MHz	1.010	-	-	-	-	-
<b>802.11a (20MHz)</b>						
CH149 / 5745MHz	1.360	0.097	0.085	0.173	0.206	0.037
CH157 / 5785MHz	1.120	-	-	-	-	-
CH161 / 5805MHz	1.060	-	-	-	-	-
<b>802.11a (40MHz)</b>						
CH151 / 5755MHz	1.060	0.095	0.075	0.142	0.253	0.029
CH159 / 5795MHz	0.829	-	-	-	-	-

**NOTE:**

1. In this testing, the limit for General Population Spatial Peak averaged over 1g, 1.6 W/kg, is applied.
2. Please see the Appendix A for the data.
3. The variation of the EUT conducted power measured before and after SAR testing should not over 5%.
4. Per KDB 447498, when 1-g SAR for the highest output channel is less than 0.8 W/kg, testing for the other channels is not required.

## 6.5 POWER DRIFT TABLE

Test Mode	Test Position	Communication Mode	Test Channel	Test Frequency	Power (dBm)		Power Drift (%)
					Begin	After	
1	Bottom	802.11b	6	2437MHz	14.02	13.93	-2.05
2	Front				14.02	13.91	-2.50
3	Right Edge				14.02	13.88	-3.17
4	Left Edge				14.02	13.86	-3.62
5	Top Edge				14.02	13.84	-4.06
6	Bottom Edge				14.02	13.82	-4.50
7	Bottom	802.11a	149	5745MHz	12.83	12.76	-1.60
			157	5785MHz	12.31	12.23	-1.83
			161	5805MHz	12.37	12.27	-2.28
8		802.11a (20MHz)	149	5745MHz	12.87	12.76	-2.50
			157	5785MHz	12.21	12.09	-2.73
			161	5805MHz	12.46	12.32	-3.17
9		802.11a (40MHz)	151	5755MHz	12.73	12.58	-3.39
			159	5795MHz	12.08	11.92	-3.62
10		Front	802.11a	149	5745MHz	12.83	12.79
11	802.11a (20MHz)		149	5745MHz	12.87	12.81	-1.37
12	802.11a (40MHz)		151	5755MHz	12.73	12.66	-1.60
13	Right Edge	802.11a	149	5745MHz	12.83	12.75	-1.83
14		802.11a (20MHz)	149	5745MHz	12.87	12.78	-2.05
15		802.11a (40MHz)	151	5755MHz	12.73	12.63	-2.28
16	Left Edge	802.11a	149	5745MHz	12.83	12.72	-2.50
17		802.11a (20MHz)	149	5745MHz	12.87	12.75	-2.73
18		802.11a (40MHz)	151	5755MHz	12.73	12.60	-2.95
19	Top Edge	802.11a	149	5745MHz	12.83	12.69	-3.17
20		802.11a (20MHz)	149	5745MHz	12.87	12.72	-3.39
21		802.11a (40MHz)	151	5755MHz	12.73	12.57	-3.62
22	Bottom Edge	802.11a	149	5745MHz	12.83	12.66	-3.84
23		802.11a (20MHz)	149	5745MHz	12.87	12.68	-4.28
24		802.11a (40MHz)	151	5755MHz	12.73	12.53	-4.50



A D T

## 6.6 SAR LIMITS

HUMAN EXPOSURE	SAR (W/kg)	
	(GENERAL POPULATION / UNCONTROLLED EXPOSURE ENVIRONMENT)	(OCCUPATIONAL / CONTROLLED EXPOSURE ENVIRONMENT)
Spatial Average (whole body)	0.08	0.4
Spatial Peak (averaged over 1 g)	<b>1.6</b>	8.0
Spatial Peak (hands / wrists / feet / ankles averaged over 10 g)	4.0	20.0

**NOTE:** This limits accord to 47 CFR 2.1093 – Safety Limit.



A D T

## 6. INFORMATION ON THE TESTING LABORATORIES

We, Bureau Veritas Consumer Products Services (H.K.) Ltd., Taoyuan Branch, were founded in 1988 to provide our best service in EMC, Radio, Telecom and Safety consultation. Our laboratories are accredited and approved according to ISO/IEC 17025.

Copies of accreditation certificates of our laboratories obtained from approval agencies can be downloaded from our web site: [www.adt.com.tw/index.5.phtml](http://www.adt.com.tw/index.5.phtml). If you have any comments, please feel free to contact us at the following:

**Linko EMC/RF Lab:**

Tel: 886-2-26052180

Fax: 886-2-26051924

**Hsin Chu EMC/RF Lab:**

Tel: 886-3-5935343

Fax: 886-3-5935342

**Hwa Ya EMC/RF/Safety/Telecom Lab:**

Tel: 886-3-3183232

Fax: 886-3-3185050

**Web Site:** [www.adt.com.tw](http://www.adt.com.tw)

The address and road map of all our labs can be found in our web site also.

---END---



香港商立德國際商品試驗有限公司桃園分公司

Bureau Veritas Consumer Products Services (H.K.) Ltd., Taoyuan Branch

**APPENDIX A: TEST DATA**

**DUT: Digital Video Recorder ; Type: M3260**

**Liquid Level Photo**

**Tissue 2450MHz D=150mm**



**Tissue 5800MHz D=150mm**





## M01-11b-Ch6

Communication System: 802.11b ; Frequency: 2437 MHz ; Duty Cycle: 1:1 ; Modulation type: DBPSK  
Medium: MSL2450 Medium parameters used:  $f = 2437$  MHz;  $\sigma = 1.97$  mho/m;  $\epsilon_r = 53.64$ ;  $\rho = 1000$  kg/m<sup>3</sup>

Phantom section: Flat Section ; Separation distance : 0 mm (The bottom side of the EUT to the Phantom)

DASY4 Configuration:

- Probe: EX3DV4 - SN3578; ConvF(6.51, 6.51, 6.51); Calibrated: 2010/6/22
- Sensor-Surface: 2mm (Mechanical Surface Detection)
- Electronics: DAE3 Sn579; Calibrated: 2010/9/20
- Phantom: SAM Twin Phantom V4.0; Type: QD 000 P40 CA; Serial: TP 1202
- Measurement SW: DASY4, Version 4.7 (80); SEMCAD X Version 14.4.2 (2595)

**Body Position - Mid Ch6/Area Scan (10x16x1):** Measurement grid: dx=8mm, dy=8mm  
Maximum value of SAR (measured) = 0.649 mW/g

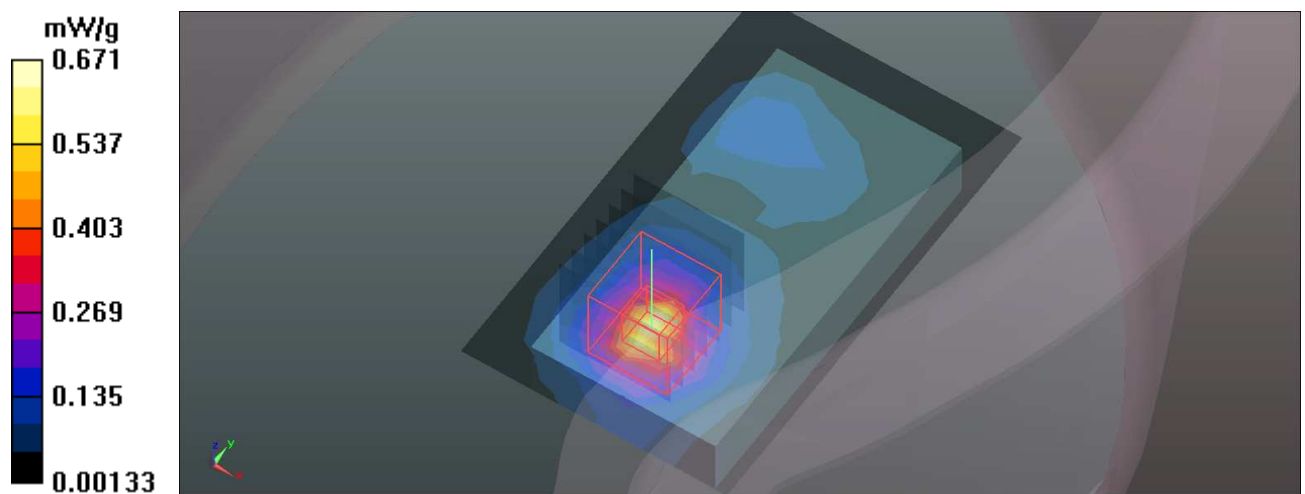
**Body Position - Mid Ch6/Zoom Scan (7x7x7)/Cube 0:** Measurement grid: dx=5mm, dy=5mm, dz=5mm

Reference Value = 10.742 V/m; Power Drift = -0.13 dB

Peak SAR (extrapolated) = 0.988 W/kg

**SAR(1 g) = 0.378 mW/g; SAR(10 g) = 0.155 mW/g**

Maximum value of SAR (measured) = 0.671 mW/g



## M02-11b-Ch6

Communication System: 802.11b ; Frequency: 2437 MHz ; Duty Cycle: 1:1 ; Modulation type: DBPSK  
Medium: MSL2450 Medium parameters used:  $f = 2437$  MHz;  $\sigma = 1.97$  mho/m;  $\epsilon_r = 53.64$ ;  $\rho = 1000$  kg/m<sup>3</sup>

Phantom section: Flat Section ; Separation distance : 0 mm (The front side of the EUT to the Phantom)

DASY4 Configuration:

- Probe: EX3DV4 - SN3578; ConvF(6.51, 6.51, 6.51); Calibrated: 2010/6/22
- Sensor-Surface: 2mm (Mechanical Surface Detection)
- Electronics: DAE3 Sn579; Calibrated: 2010/9/20
- Phantom: SAM Twin Phantom V4.0; Type: QD 000 P40 CA; Serial: TP 1202
- Measurement SW: DASY4, Version 4.7 (80); SEMCAD X Version 14.4.2 (2595)

**Body Position - Mid Ch6/Area Scan (11x16x1):** Measurement grid: dx=8mm, dy=8mm

Maximum value of SAR (measured) = 0.053 mW/g

**Body Position - Mid Ch6/Zoom Scan (7x7x7)/Cube 0:** Measurement grid: dx=5mm, dy=5mm, dz=5mm

Reference Value = 2.381 V/m; Power Drift = 0.10 dB

Peak SAR (extrapolated) = 0.087 W/kg

**SAR(1 g) = 0.038 mW/g; SAR(10 g) = 0.020 mW/g**

Maximum value of SAR (measured) = 0.058 mW/g

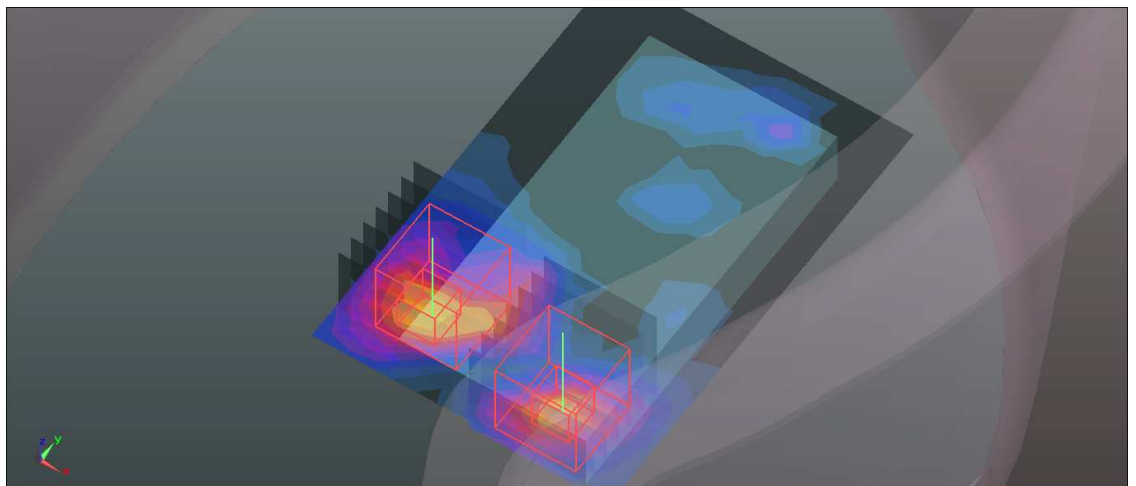
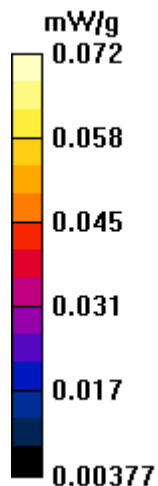
**Body Position - Mid Ch6/Zoom Scan (7x7x7)/Cube 1:** Measurement grid: dx=5mm, dy=5mm, dz=5mm

Reference Value = 2.381 V/m; Power Drift = 0.10 dB

Peak SAR (extrapolated) = 0.109 W/kg

**SAR(1 g) = 0.045 mW/g; SAR(10 g) = 0.022 mW/g**

Maximum value of SAR (measured) = 0.072 mW/g



## M03-11b-Ch6

Communication System: 802.11b ; Frequency: 2437 MHz ; Duty Cycle: 1:1 ; Modulation type: DBPSK  
Medium: MSL2450 Medium parameters used:  $f = 2437$  MHz;  $\sigma = 1.97$  mho/m;  $\epsilon_r = 53.64$ ;  $\rho = 1000$  kg/m<sup>3</sup>

Phantom section: Flat Section ; Separation distance : 0 mm (The right edge side of the EUT to the Phantom)

DASY4 Configuration:

- Probe: EX3DV4 - SN3578; ConvF(6.51, 6.51, 6.51); Calibrated: 2010/6/22
- Sensor-Surface: 2mm (Mechanical Surface Detection)
- Electronics: DAE3 Sn579; Calibrated: 2010/9/20
- Phantom: SAM Twin Phantom V4.0; Type: QD 000 P40 CA; Serial: TP 1202
- Measurement SW: DASY4, Version 4.7 (80); SEMCAD X Version 14.4.2 (2595)

**Body Position -Mid/Area Scan (7x13x1):** Measurement grid: dx=10mm, dy=10mm  
Maximum value of SAR (measured) = 0.286 mW/g

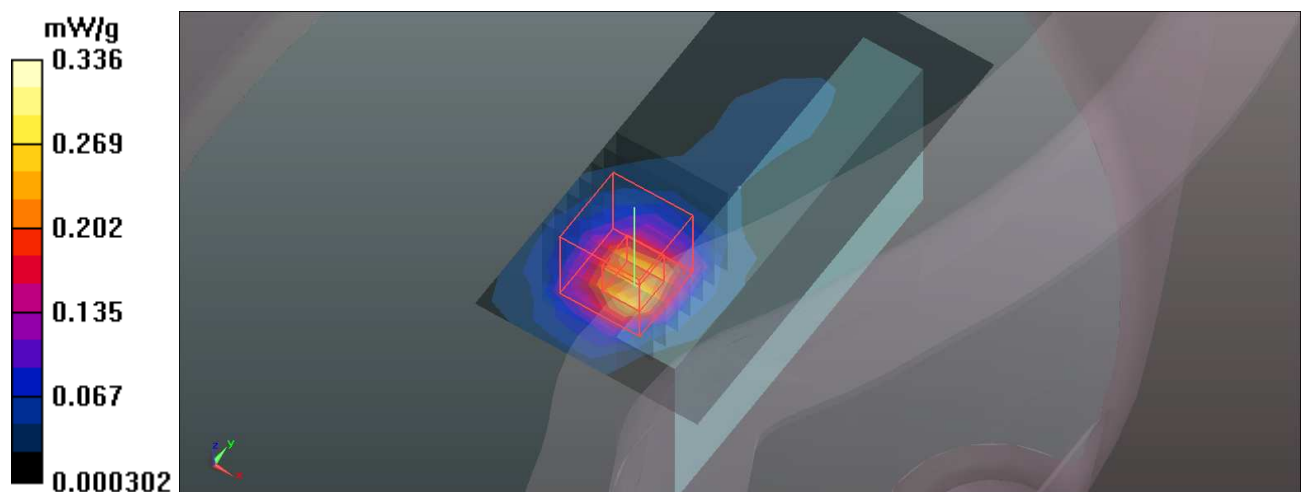
**Body Position -Mid/Zoom Scan (7x7x7)/Cube 0:** Measurement grid: dx=5mm, dy=5mm, dz=5mm

Reference Value = 8.322 V/m; Power Drift = 0.04 dB

Peak SAR (extrapolated) = 0.469 W/kg

**SAR(1 g) = 0.209 mW/g; SAR(10 g) = 0.088 mW/g**

Maximum value of SAR (measured) = 0.336 mW/g



## M04-11b-Ch6

Communication System: 802.11b ; Frequency: 2437 MHz ; Duty Cycle: 1:1 ; Modulation type: DBPSK  
Medium: MSL2450 Medium parameters used:  $f = 2437$  MHz;  $\sigma = 1.97$  mho/m;  $\epsilon_r = 53.64$ ;  $\rho = 1000$  kg/m<sup>3</sup>

Phantom section: Flat Section ; Separation distance : 0 mm (The left edge side of the EUT to the Phantom)

DASY4 Configuration:

- Probe: EX3DV4 - SN3578; ConvF(6.51, 6.51, 6.51); Calibrated: 2010/6/22
- Sensor-Surface: 2mm (Mechanical Surface Detection)
- Electronics: DAE3 Sn579; Calibrated: 2010/9/20
- Phantom: SAM Twin Phantom V4.0; Type: QD 000 P40 CA; Serial: TP 1202
- Measurement SW: DASY4, Version 4.7 (80); SEMCAD X Version 14.4.2 (2595)

**Body Position -Mid/Area Scan (7x13x1):** Measurement grid: dx=10mm, dy=10mm

Maximum value of SAR (measured) = 0.125 mW/g

**Body Position -Mid/Zoom Scan (7x7x7)/Cube 0:** Measurement grid: dx=5mm, dy=5mm, dz=5mm

Reference Value = 6.248 V/m; Power Drift = 0.09 dB

Peak SAR (extrapolated) = 0.192 W/kg

**SAR(1 g) = 0.088 mW/g; SAR(10 g) = 0.040 mW/g**

Maximum value of SAR (measured) = 0.136 mW/g

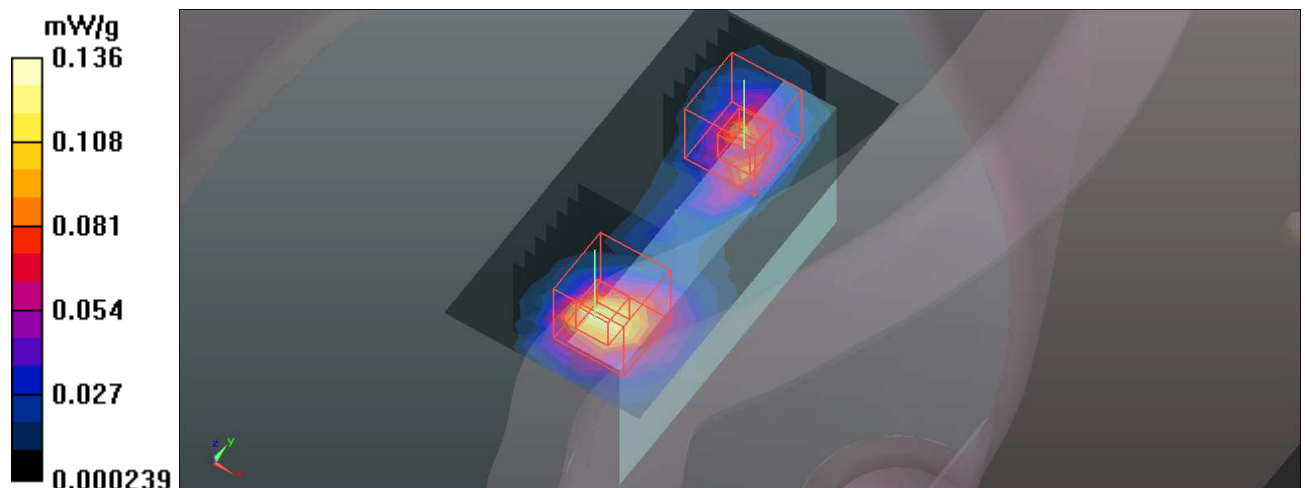
**Body Position -Mid/Zoom Scan (7x7x7)/Cube 1:** Measurement grid: dx=5mm, dy=5mm, dz=5mm

Reference Value = 6.248 V/m; Power Drift = 0.09 dB

Peak SAR (extrapolated) = 0.184 W/kg

**SAR(1 g) = 0.068 mW/g; SAR(10 g) = 0.029 mW/g**

Maximum value of SAR (measured) = 0.113 mW/g



## M05-11b-Ch6

Communication System: 802.11b ; Frequency: 2437 MHz ; Duty Cycle: 1:1 ; Modulation type: DBPSK  
Medium: MSL2450 Medium parameters used:  $f = 2437$  MHz;  $\sigma = 1.97$  mho/m;  $\epsilon_r = 53.64$ ;  $\rho = 1000$  kg/m<sup>3</sup>

Phantom section: Flat Section ; Separation distance : 0 mm (The top edge side of the EUT to the Phantom)

DASY4 Configuration:

- Probe: EX3DV4 - SN3578; ConvF(6.51, 6.51, 6.51); Calibrated: 2010/6/22
- Sensor-Surface: 2mm (Mechanical Surface Detection)
- Electronics: DAE3 Sn579; Calibrated: 2010/9/20
- Phantom: SAM Twin Phantom V4.0; Type: QD 000 P40 CA; Serial: TP 1202
- Measurement SW: DASY4, Version 4.7 (80); SEMCAD X Version 14.4.2 (2595)

**Body Position - Mid/Area Scan (8x6x1):** Measurement grid: dx=10mm, dy=10mm  
Maximum value of SAR (measured) = 0.186 mW/g

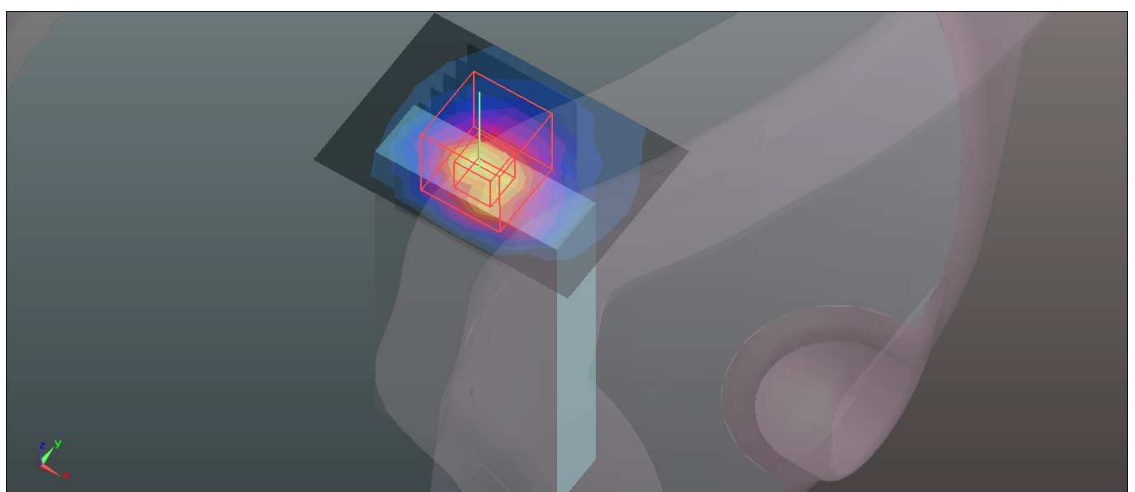
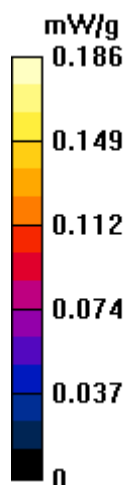
**Body Position - Mid/Zoom Scan (7x7x7)/Cube 0:** Measurement grid: dx=5mm, dy=5mm, dz=5mm

Reference Value = 9.508 V/m; Power Drift = -0.19 dB

Peak SAR (extrapolated) = 0.247 W/kg

**SAR(1 g) = 0.117 mW/g; SAR(10 g) = 0.054 mW/g**

Maximum value of SAR (measured) = 0.179 mW/g



## M06-11b-Ch6

Communication System: 802.11b ; Frequency: 2437 MHz ; Duty Cycle: 1:1 ; Modulation type: DBPSK  
Medium: MSL2450 Medium parameters used:  $f = 2437$  MHz;  $\sigma = 1.97$  mho/m;  $\epsilon_r = 53.64$ ;  $\rho = 1000$  kg/m<sup>3</sup>

Phantom section: Flat Section ; Separation distance : 0 mm (The bottom edge side of the EUT to the Phantom)

DASY4 Configuration:

- Probe: EX3DV4 - SN3578; ConvF(6.51, 6.51, 6.51); Calibrated: 2010/6/22
- Sensor-Surface: 2mm (Mechanical Surface Detection)
- Electronics: DAE3 Sn579; Calibrated: 2010/9/20
- Phantom: SAM Twin Phantom V4.0; Type: QD 000 P40 CA; Serial: TP 1202
- Measurement SW: DASY4, Version 4.7 (80); SEMCAD X Version 14.4.2 (2595)

**Body Position - Mid/Area Scan (8x6x1):** Measurement grid: dx=10mm, dy=10mm  
Maximum value of SAR (measured) = 0.030 mW/g

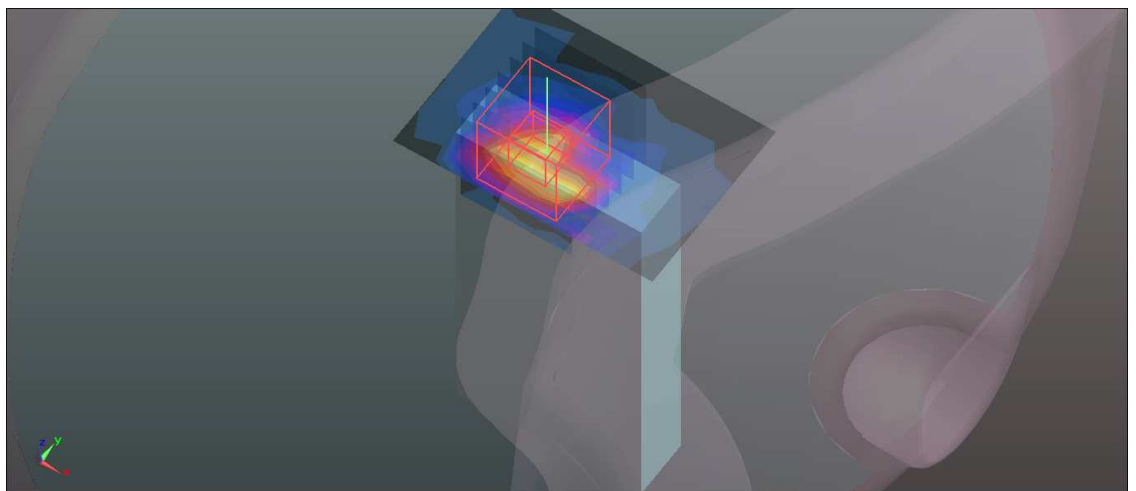
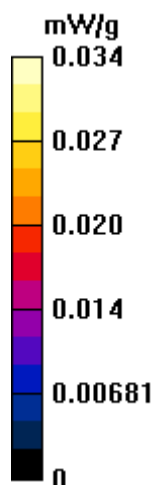
**Body Position - Mid/Zoom Scan (7x7x7)/Cube 0:** Measurement grid: dx=5mm, dy=5mm, dz=5mm

Reference Value = 3.228 V/m; Power Drift = 0.189 dB

Peak SAR (extrapolated) = 0.048 W/kg

**SAR(1 g) = 0.019 mW/g; SAR(10 g) = 0.00766 mW/g**

Maximum value of SAR (measured) = 0.034 mW/g



## M07-11a-Ch149

Communication System: 802.11a ; Frequency: 5745 MHz ; Duty Cycle: 1:1 ; Modulation type: BPSK  
Medium: MSL5800 Medium parameters used:  $f = 5745$  MHz;  $\sigma = 6.02$  mho/m;  $\epsilon_r = 49.05$ ;  $\rho = 1000$  kg/m<sup>3</sup>

Phantom section: Flat Section ; Separation distance : 0 mm (The bottom side of the EUT to the Phantom)

DASY4 Configuration:

- Probe: EX3DV4 - SN3578; ConvF(3.29, 3.29, 3.29); Calibrated: 2010/6/22
- Sensor-Surface: 2mm (Mechanical Surface Detection)
- Electronics: DAE3 Sn579; Calibrated: 2010/9/20
- Phantom: SAM Twin Phantom V4.0; Type: QD 000 P40 CA; Serial: TP 1202
- Measurement SW: DASY4, Version 4.7 (80); SEMCAD X Version 14.4.2 (2595)

**Body Position - Ch149/Area Scan (8x13x1):** Measurement grid: dx=10mm, dy=10mm  
Maximum value of SAR (measured) = 2.566 mW/g

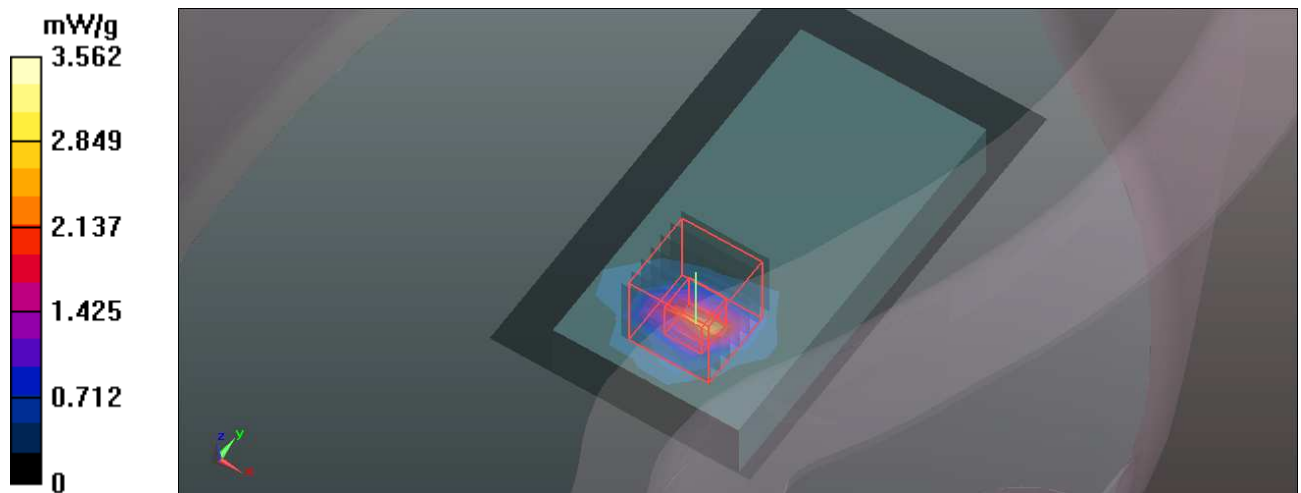
**Body Position - Ch149/Zoom Scan (7x7x9)/Cube 0:** Measurement grid: dx=4mm, dy=4mm, dz=2.5mm

Reference Value = 6.757 V/m; Power Drift = -0.13 dB

Peak SAR (extrapolated) = 7.167 W/kg

**SAR(1 g) = 1.49 mW/g; SAR(10 g) = 0.350 mW/g**

Maximum value of SAR (measured) = 3.562 mW/g



## M07-11a-Ch157

Communication System: 802.11a ; Frequency: 5785 MHz ; Duty Cycle: 1:1 ; Modulation type: BPSK  
Medium: MSL5800 Medium parameters used:  $f = 5785$  MHz;  $\sigma = 6.07$  mho/m;  $\epsilon_r = 48.98$ ;  $\rho = 1000$  kg/m<sup>3</sup>

Phantom section: Flat Section ; Separation distance : 0 mm (The bottom side of the EUT to the Phantom)

DASY4 Configuration:

- Probe: EX3DV4 - SN3578; ConvF(3.29, 3.29, 3.29); Calibrated: 2010/6/22
- Sensor-Surface: 2mm (Mechanical Surface Detection)
- Electronics: DAE3 Sn579; Calibrated: 2010/9/20
- Phantom: SAM Twin Phantom V4.0; Type: QD 000 P40 CA; Serial: TP 1202
- Measurement SW: DASY4, Version 4.7 (80); SEMCAD X Version 14.4.2 (2595)

**Body Position - Ch157/Area Scan (8x13x1):** Measurement grid: dx=10mm, dy=10mm  
Maximum value of SAR (measured) = 2.215 mW/g

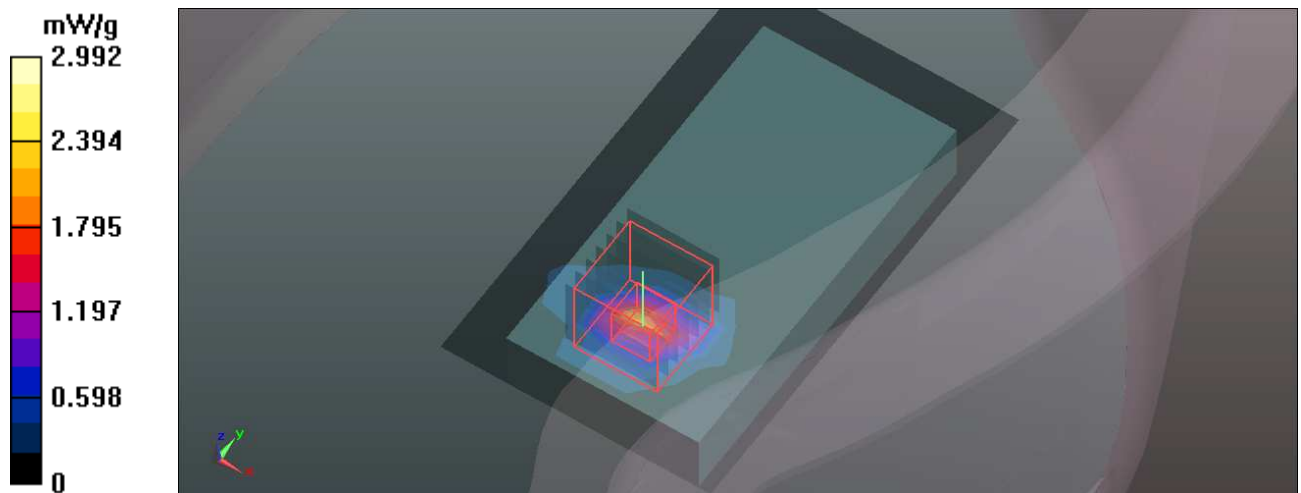
**Body Position - Ch157/Zoom Scan (7x7x9)/Cube 0:** Measurement grid: dx=4mm, dy=4mm, dz=2.5mm

Reference Value = 6.464 V/m; Power Drift = -0.18 dB

Peak SAR (extrapolated) = 6.252 W/kg

**SAR(1 g) = 1.27 mW/g; SAR(10 g) = 0.294 mW/g**

Maximum value of SAR (measured) = 2.992 mW/g





## M07-11a-Ch161

Communication System: 802.11a ; Frequency: 5805 MHz ; Duty Cycle: 1:1 ; Modulation type: BPSK  
Medium: MSL5800 Medium parameters used :  $f = 5805$  MHz;  $\sigma = 6.12$  mho/m;  $\epsilon_r = 48.89$ ;  $\rho = 1000$  kg/m<sup>3</sup>

Phantom section: Flat Section ; Separation distance : 0 mm (The bottom side of the EUT to the Phantom)

DASY4 Configuration:

- Probe: EX3DV4 - SN3578; ConvF(3.29, 3.29, 3.29); Calibrated: 2010/6/22
- Sensor-Surface: 2mm (Mechanical Surface Detection)
- Electronics: DAE3 Sn579; Calibrated: 2010/9/20
- Phantom: SAM Twin Phantom V4.0; Type: QD 000 P40 CA; Serial: TP 1202
- Measurement SW: DASY4, Version 4.7 (80); SEMCAD X Version 14.4.2 (2595)

**Body Position - Ch161/Area Scan (8x13x1):** Measurement grid: dx=10mm, dy=10mm  
Maximum value of SAR (measured) = 1.504 mW/g

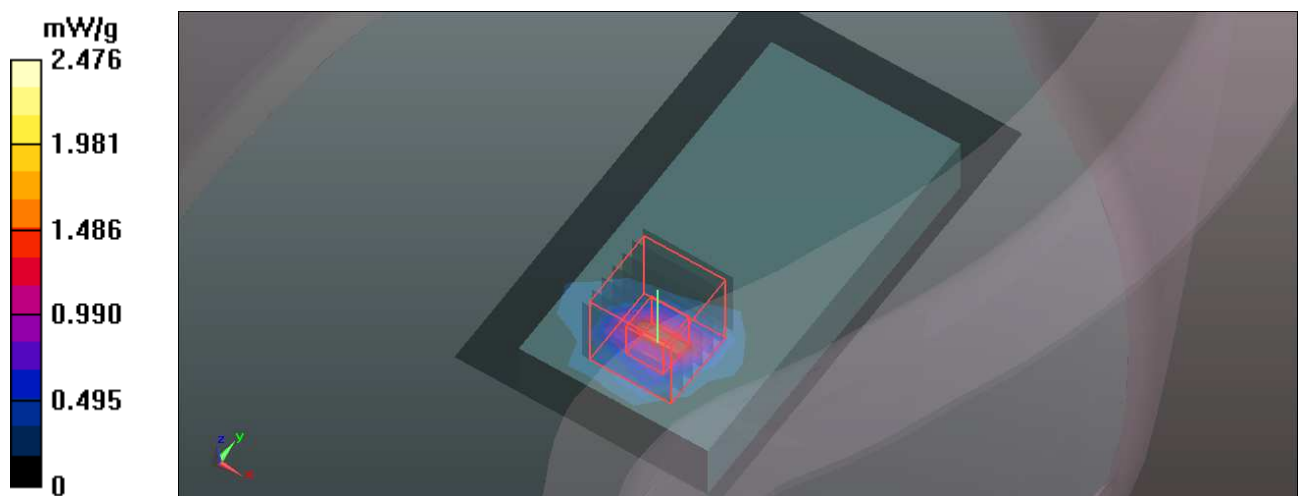
**Body Position - Ch161/Zoom Scan (7x7x9)/Cube 0:** Measurement grid: dx=4mm, dy=4mm, dz=2.5mm

Reference Value = 5.848 V/m; Power Drift = -0.10 dB

Peak SAR (extrapolated) = 4.950 W/kg

**SAR(1 g) = 1.01 mW/g; SAR(10 g) = 0.230 mW/g**

Maximum value of SAR (measured) = 2.476 mW/g



## M08-11aN 20M-Ch149

Communication System: 802.11aN 20M ; Frequency: 5745 MHz ; Duty Cycle: 1:1 ; Modulation type: BPSK

Medium: MSL5800 Medium parameters used:  $f = 5745$  MHz;  $\sigma = 6.02$  mho/m;  $\epsilon_r = 49.05$ ;  $\rho = 1000$  kg/m<sup>3</sup>

Phantom section: Flat Section ; Separation distance : 0 mm (The bottom side of the EUT to the Phantom)

DASY4 Configuration:

- Probe: EX3DV4 - SN3578; ConvF(3.29, 3.29, 3.29); Calibrated: 2010/6/22
- Sensor-Surface: 2mm (Mechanical Surface Detection)
- Electronics: DAE3 Sn579; Calibrated: 2010/9/20
- Phantom: SAM Twin Phantom V4.0; Type: QD 000 P40 CA; Serial: TP 1202
- Measurement SW: DASY4, Version 4.7 (80); SEMCAD X Version 14.4.2 (2595)

**Body Position - Ch149/Area Scan (8x13x1):** Measurement grid: dx=10mm, dy=10mm  
Maximum value of SAR (measured) = 2.557 mW/g

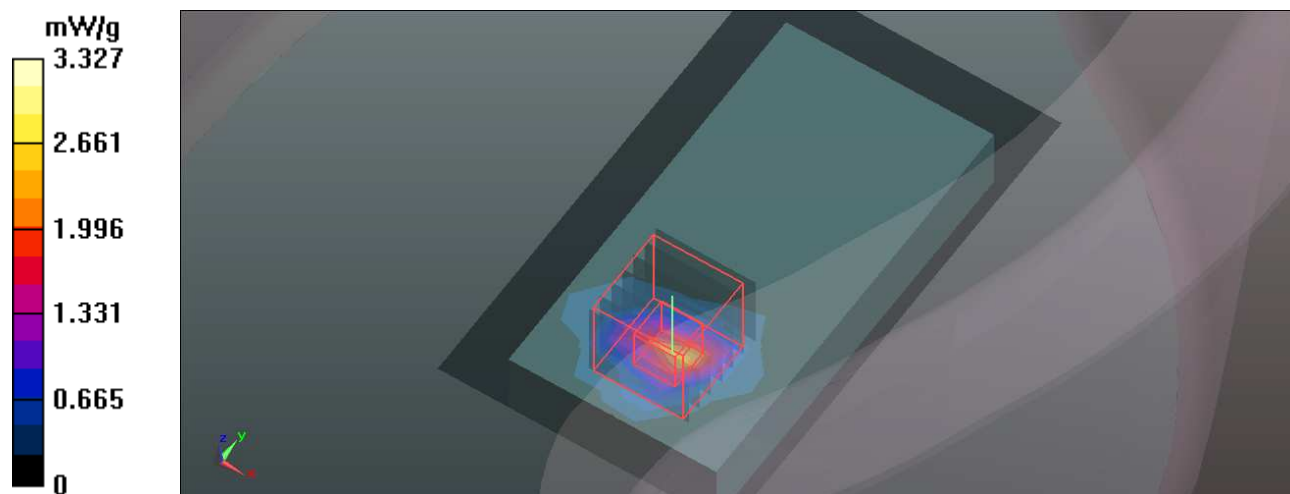
**Body Position - Ch149/Zoom Scan (7x7x9)/Cube 0:** Measurement grid: dx=4mm, dy=4mm, dz=2.5mm

Reference Value = 6.642 V/m; Power Drift = -0.18 dB

Peak SAR (extrapolated) = 6.600 W/kg

**SAR(1 g) = 1.36 mW/g; SAR(10 g) = 0.317 mW/g**

Maximum value of SAR (measured) = 3.327 mW/g



## M08-11aN 20M-Ch157

Communication System: 802.11aN 20M ; Frequency: 5785 MHz ; Duty Cycle: 1:1 ; Modulation type: BPSK

Medium: MSL5800 Medium parameters used:  $f = 5785$  MHz;  $\sigma = 6.07$  mho/m;  $\epsilon_r = 48.98$ ;  $\rho = 1000$  kg/m<sup>3</sup>

Phantom section: Flat Section ; Separation distance : 0 mm (The bottom side of the EUT to the Phantom)

DASY4 Configuration:

- Probe: EX3DV4 - SN3578; ConvF(3.29, 3.29, 3.29); Calibrated: 2010/6/22
- Sensor-Surface: 2mm (Mechanical Surface Detection)
- Electronics: DAE3 Sn579; Calibrated: 2010/9/20
- Phantom: SAM Twin Phantom V4.0; Type: QD 000 P40 CA; Serial: TP 1202
- Measurement SW: DASY4, Version 4.7 (80); SEMCAD X Version 14.4.2 (2595)

**Body Position - Ch157/Area Scan (8x13x1):** Measurement grid: dx=10mm, dy=10mm  
Maximum value of SAR (measured) = 2.315 mW/g

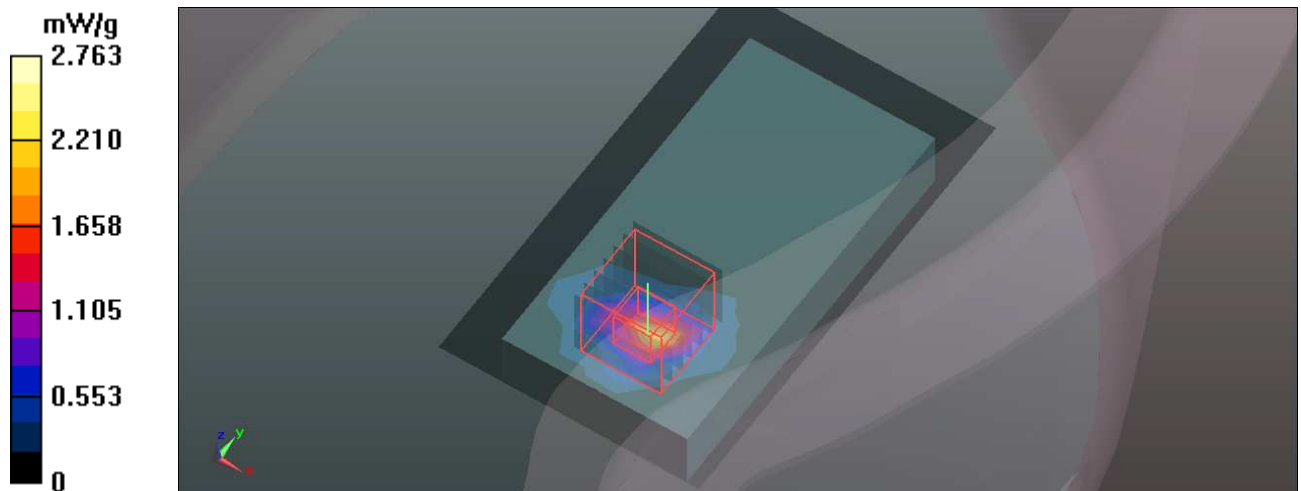
**Body Position - Ch157/Zoom Scan (7x7x9)/Cube 0:** Measurement grid: dx=4mm, dy=4mm, dz=2.5mm

Reference Value = 6.243 V/m; Power Drift = -0.13 dB

Peak SAR (extrapolated) = 5.505 W/kg

**SAR(1 g) = 1.12 mW/g; SAR(10 g) = 0.257 mW/g**

Maximum value of SAR (measured) = 2.763 mW/g



## M08-11aN 20M-Ch161

Communication System: 802.11aN 20M ; Frequency: 5805 MHz ; Duty Cycle: 1:1 ; Modulation type: BPSK

Medium: MSL5800 Medium parameters used :  $f = 5805$  MHz;  $\sigma = 6.12$  mho/m;  $\epsilon_r = 48.89$ ;  $\rho = 1000$  kg/m<sup>3</sup>

Phantom section: Flat Section ; Separation distance : 0 mm (The bottom side of the EUT to the Phantom)

DASY4 Configuration:

- Probe: EX3DV4 - SN3578; ConvF(3.29, 3.29, 3.29); Calibrated: 2010/6/22
- Sensor-Surface: 2mm (Mechanical Surface Detection)
- Electronics: DAE3 Sn579; Calibrated: 2010/9/20
- Phantom: SAM Twin Phantom V4.0; Type: QD 000 P40 CA; Serial: TP 1202
- Measurement SW: DASY4, Version 4.7 (80); SEMCAD X Version 14.4.2 (2595)

**Body Position - Ch161 /Area Scan (8x13x1):** Measurement grid: dx=10mm, dy=10mm  
Maximum value of SAR (measured) = 2.106 mW/g

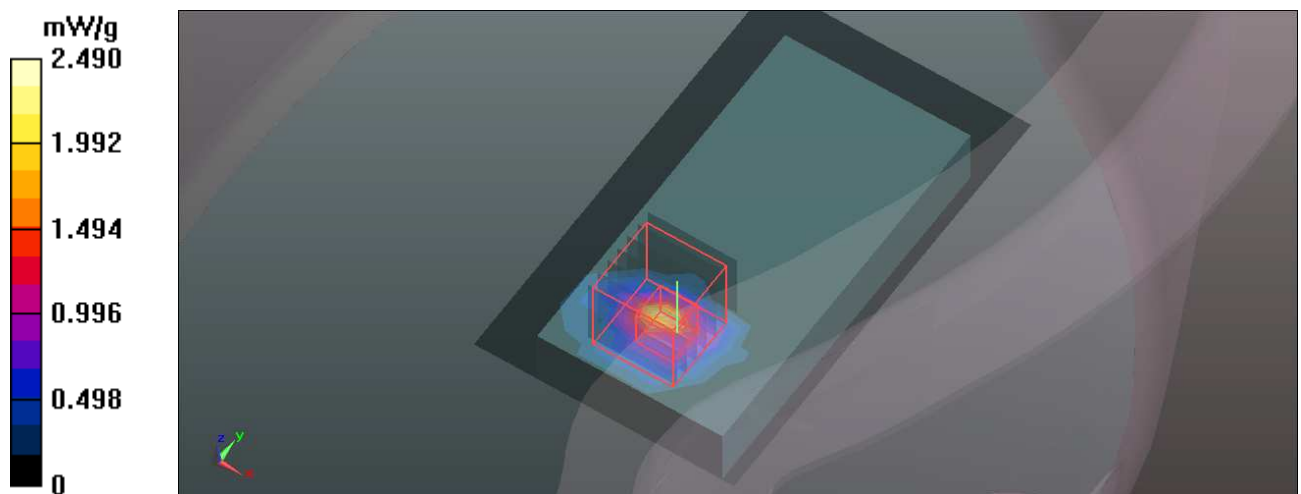
**Body Position - Ch161 /Zoom Scan (7x7x9)/Cube 0:** Measurement grid: dx=4mm, dy=4mm, dz=2.5mm

Reference Value = 6.002 V/m; Power Drift = -0.12 dB

Peak SAR (extrapolated) = 4.543 W/kg

**SAR(1 g) = 1.06 mW/g; SAR(10 g) = 0.249 mW/g**

Maximum value of SAR (measured) = 2.490 mW/g



## M09-11aN 40M-Ch151

Communication System: 802.11aN 40M ; Frequency: 5755 MHz ; Duty Cycle: 1:1 ; Modulation type: BPSK

Medium: MSL5800 Medium parameters used:  $f = 5755$  MHz;  $\sigma = 6.03$  mho/m;  $\epsilon_r = 49.03$ ;  $\rho = 1000$  kg/m<sup>3</sup>

Phantom section: Flat Section ; Separation distance : 0 mm (The bottom side of the EUT to the Phantom)

DASY4 Configuration:

- Probe: EX3DV4 - SN3578; ConvF(3.29, 3.29, 3.29); Calibrated: 2010/6/22
- Sensor-Surface: 2mm (Mechanical Surface Detection)
- Electronics: DAE3 Sn579; Calibrated: 2010/9/20
- Phantom: SAM Twin Phantom V4.0; Type: QD 000 P40 CA; Serial: TP 1202
- Measurement SW: DASY4, Version 4.7 (80); SEMCAD X Version 14.4.2 (2595)

**Body Position - Ch151/Area Scan (8x13x1):** Measurement grid: dx=10mm, dy=10mm  
Maximum value of SAR (measured) = 2.176 mW/g

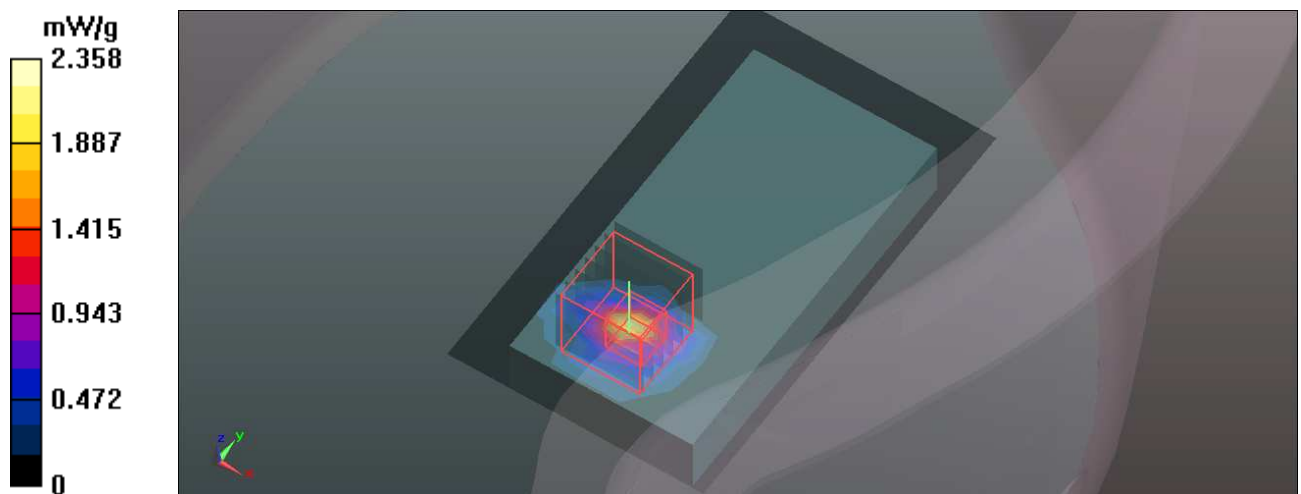
**Body Position - Ch151/Zoom Scan (7x7x9)/Cube 0:** Measurement grid: dx=4mm, dy=4mm, dz=2.5mm

Reference Value = 7.087 V/m; Power Drift = -0.12 dB

Peak SAR (extrapolated) = 4.880 W/kg

**SAR(1 g) = 1.06 mW/g; SAR(10 g) = 0.267 mW/g**

Maximum value of SAR (measured) = 2.358 mW/g



## M09-11aN 40M-Ch159

Communication System: 802.11a/n 40M ; Frequency: 5795 MHz ; Duty Cycle: 1:1 ; Modulation type: BPSK

Medium: MSL5800 Medium parameters used:  $f = 5795$  MHz;  $\sigma = 6.08$  mho/m;  $\epsilon_r = 48.96$ ;  $\rho = 1000$  kg/m<sup>3</sup>

Phantom section: Flat Section ; Separation distance : 0 mm (The bottom side of the EUT to the Phantom)

DASY4 Configuration:

- Probe: EX3DV4 - SN3578; ConvF(3.29, 3.29, 3.29); Calibrated: 2010/6/22
- Sensor-Surface: 2mm (Mechanical Surface Detection)
- Electronics: DAE3 Sn579; Calibrated: 2010/9/20
- Phantom: SAM Twin Phantom V4.0; Type: QD 000 P40 CA; Serial: TP 1202
- Measurement SW: DASY4, Version 4.7 (80); SEMCAD X Version 14.4.2 (2595)

**Body Position - Ch159/Area Scan (8x13x1):** Measurement grid: dx=10mm, dy=10mm  
Maximum value of SAR (measured) = 1.028 mW/g

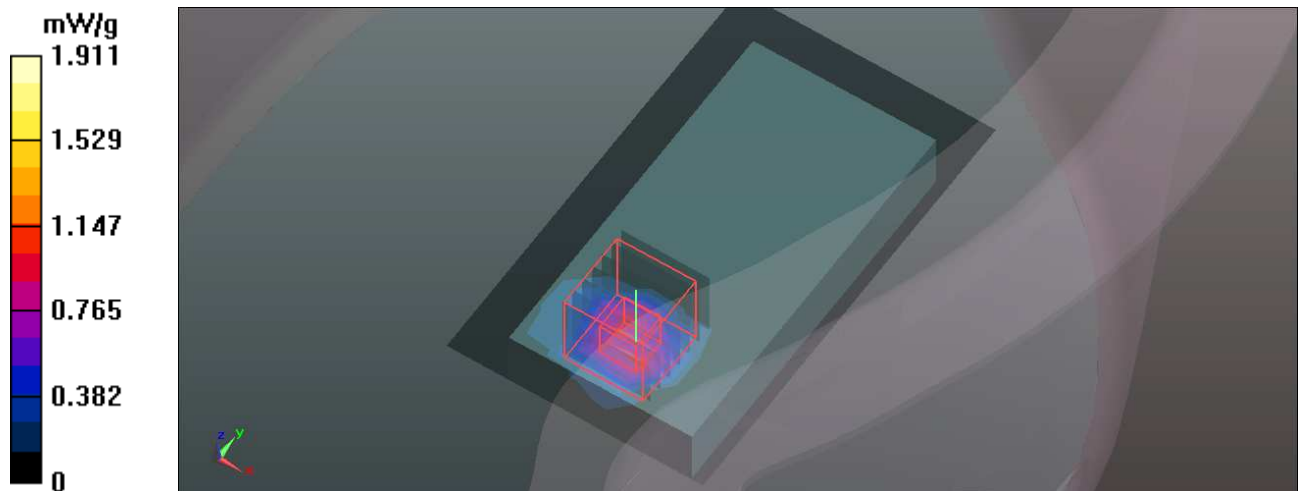
**Body Position - Ch159/Zoom Scan (7x7x9)/Cube 0:** Measurement grid: dx=4mm, dy=4mm, dz=2.5mm

Reference Value = 8.035 V/m; Power Drift = -0.17 dB

Peak SAR (extrapolated) = 3.960 W/kg

**SAR(1 g) = 0.829 mW/g; SAR(10 g) = 0.200 mW/g**

Maximum value of SAR (measured) = 1.911 mW/g





## M10-11a-Ch149

Communication System: 802.11a ; Frequency: 5745 MHz ; Duty Cycle: 1:1 ; Modulation type: BPSK  
Medium: MSL5800 Medium parameters used:  $f = 5745$  MHz;  $\sigma = 6.02$  mho/m;  $\epsilon_r = 49.05$ ;  $\rho = 1000$  kg/m<sup>3</sup>

Phantom section: Flat Section ; Separation distance : 0 mm (The front side of the EUT to the Phantom)

DASY4 Configuration:

- Probe: EX3DV4 - SN3578; ConvF(3.29, 3.29, 3.29); Calibrated: 2010/6/22
- Sensor-Surface: 2mm (Mechanical Surface Detection)
- Electronics: DAE3 Sn579; Calibrated: 2010/9/20
- Phantom: SAM Twin Phantom V4.0; Type: QD 000 P40 CA; Serial: TP 1202
- Measurement SW: DASY4, Version 4.7 (80); SEMCAD X Version 14.4.2 (2595)

**Body Position - Ch149/Area Scan (9x14x1):** Measurement grid: dx=10mm, dy=10mm  
Maximum value of SAR (measured) = 0.198 mW/g

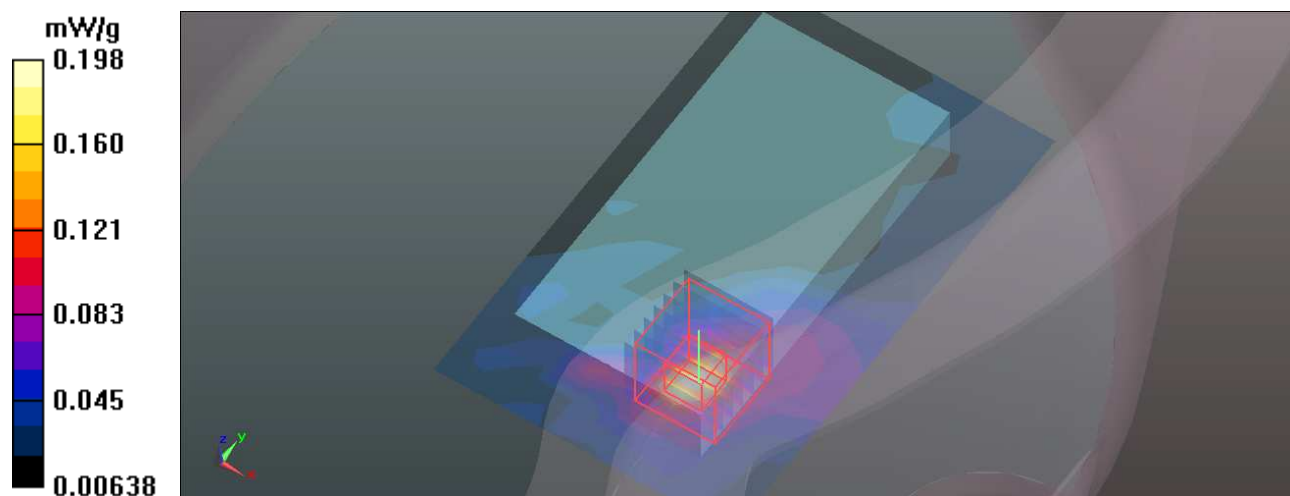
**Body Position - Ch149/Zoom Scan (7x7x9)/Cube 0:** Measurement grid: dx=4mm, dy=4mm, dz=2.5mm

Reference Value = 3.560 V/m; Power Drift = 0.13 dB

Peak SAR (extrapolated) = 0.465 W/kg

**SAR(1 g) = 0.108 mW/g; SAR(10 g) = 0.051 mW/g**

Maximum value of SAR (measured) = 0.189 mW/g



## M11-11aN 20M-Ch149

Communication System: 802.11aN 20M ; Frequency: 5745 MHz ; Duty Cycle: 1:1 ; Modulation type: BPSK

Medium: MSL5800 Medium parameters used:  $f = 5745$  MHz;  $\sigma = 6.02$  mho/m;  $\epsilon_r = 49.05$ ;  $\rho = 1000$  kg/m<sup>3</sup>

Phantom section: Flat Section ; Separation distance : 0 mm (The front side of the EUT to the Phantom)

DASY4 Configuration:

- Probe: EX3DV4 - SN3578; ConvF(3.29, 3.29, 3.29); Calibrated: 2010/6/22
- Sensor-Surface: 2mm (Mechanical Surface Detection)
- Electronics: DAE3 Sn579; Calibrated: 2010/9/20
- Phantom: SAM Twin Phantom V4.0; Type: QD 000 P40 CA; Serial: TP 1202
- Measurement SW: DASY4, Version 4.7 (80); SEMCAD X Version 14.4.2 (2595)

**Body Position - Ch149/Area Scan (9x14x1):** Measurement grid: dx=10mm, dy=10mm  
Maximum value of SAR (measured) = 0.157 mW/g

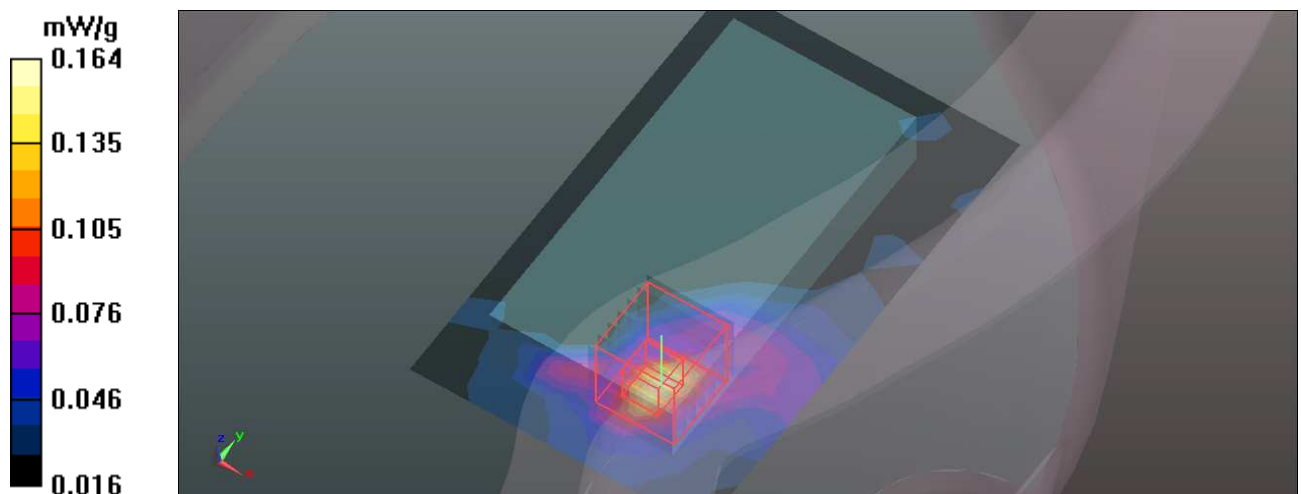
**Body Position - Ch149/Zoom Scan (7x7x9)/Cube 0:** Measurement grid: dx=4mm, dy=4mm, dz=2.5mm

Reference Value = 2.101 V/m; Power Drift = 0.15 dB

Peak SAR (extrapolated) = 0.445 W/kg

**SAR(1 g) = 0.097 mW/g; SAR(10 g) = 0.047 mW/g**

Maximum value of SAR (measured) = 0.164 mW/g





## M12-11aN 40M-Ch151

Communication System: 802.11aN 40M ; Frequency: 5755 MHz ; Duty Cycle: 1:1 ; Modulation type: BPSK

Medium: MSL5800 Medium parameters used:  $f = 5755$  MHz;  $\sigma = 6.03$  mho/m;  $\epsilon_r = 49.03$ ;  $\rho = 1000$  kg/m<sup>3</sup>

Phantom section: Flat Section ; Separation distance : 0 mm (The front side of the EUT to the Phantom)

DASY4 Configuration:

- Probe: EX3DV4 - SN3578; ConvF(3.29, 3.29, 3.29); Calibrated: 2010/6/22
- Sensor-Surface: 2mm (Mechanical Surface Detection)
- Electronics: DAE3 Sn579; Calibrated: 2010/9/20
- Phantom: SAM Twin Phantom V4.0; Type: QD 000 P40 CA; Serial: TP 1202
- Measurement SW: DASY4, Version 4.7 (80); SEMCAD X Version 14.4.2 (2595)

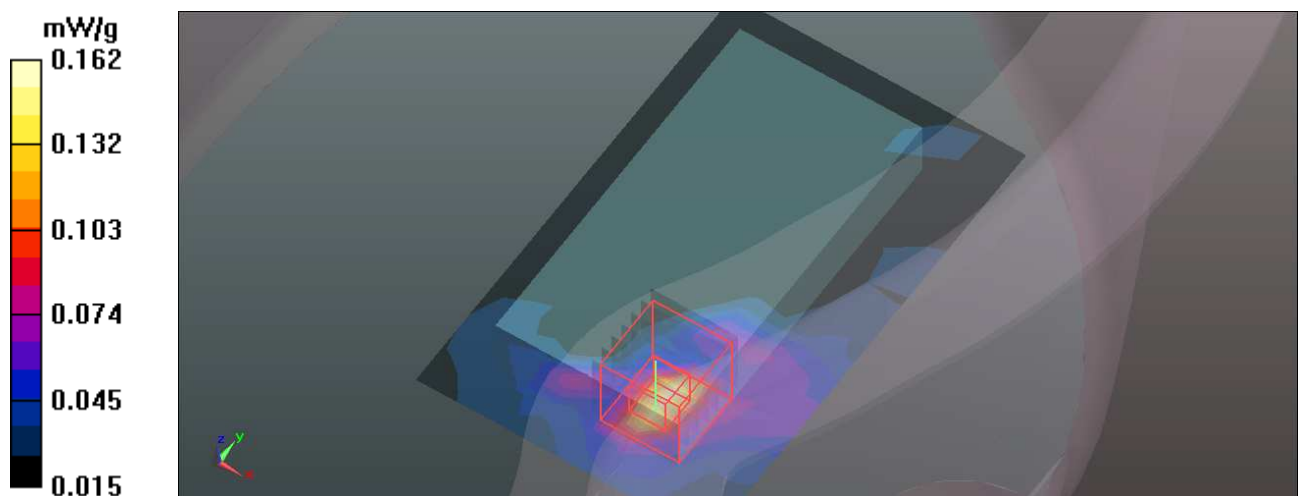
**Body Position - Ch151/Area Scan (9x14x1):** Measurement grid: dx=10mm, dy=10mm  
Maximum value of SAR (measured) = 0.155 mW/g

**Body Position - Ch151/Zoom Scan (7x7x9)/Cube 0:** Measurement grid: dx=4mm, dy=4mm, dz=2.5mm

Reference Value = 1.965 V/m; Power Drift = 0.15 dB

Peak SAR (extrapolated) = 0.521 W/kg

**SAR(1 g) = 0.095 mW/g; SAR(10 g) = 0.045 mW/g**



## M13-11a-Ch149

Communication System: 802.11a ; Frequency: 5745 MHz ; Duty Cycle: 1:1 ; Modulation type: BPSK  
Medium: MSL5800 Medium parameters used:  $f = 5745$  MHz;  $\sigma = 6.02$  mho/m;  $\epsilon_r = 49.05$ ;  $\rho = 1000$  kg/m<sup>3</sup>

Phantom section: Flat Section ; Separation distance : 0 mm (The right edge side of the EUT to the Phantom)

DASY4 Configuration:

- Probe: EX3DV4 - SN3578; ConvF(3.29, 3.29, 3.29); Calibrated: 2010/6/22
- Sensor-Surface: 2mm (Mechanical Surface Detection)
- Electronics: DAE3 Sn579; Calibrated: 2010/9/20
- Phantom: SAM Twin Phantom V4.0; Type: QD 000 P40 CA; Serial: TP 1202
- Measurement SW: DASY4, Version 4.7 (80); SEMCAD X Version 14.4.2 (2595)

**Body Position - Ch149/Area Scan (9x13x1):** Measurement grid: dx=10mm, dy=10mm  
Maximum value of SAR (measured) = 0.165 mW/g

**Body Position - Ch149/Zoom Scan (7x7x9)/Cube 0:** Measurement grid: dx=4mm, dy=4mm, dz=2.5mm

Reference Value = 4.165 V/m; Power Drift = 0.12 dB

Peak SAR (extrapolated) = 0.496 W/kg

**SAR(1 g) = 0.055 mW/g; SAR(10 g) = 0.016 mW/g**

Maximum value of SAR (measured) = 0.179 mW/g

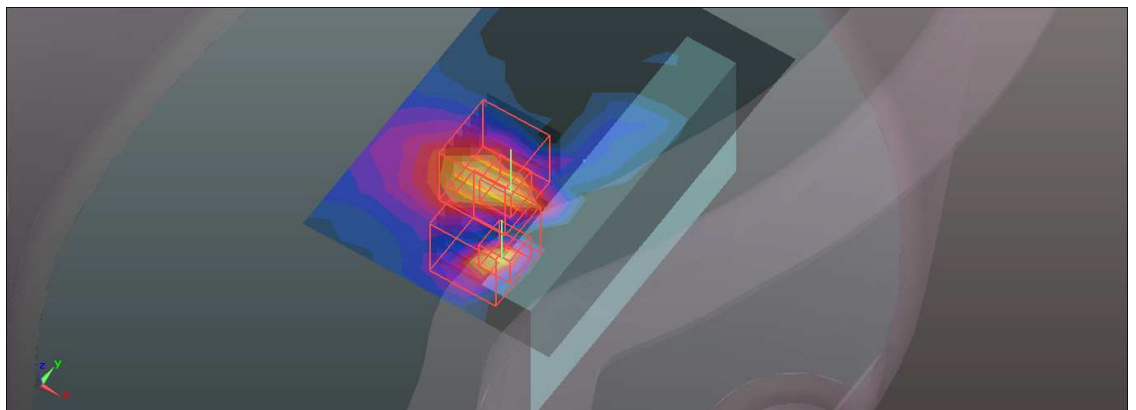
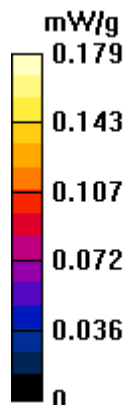
**Body Position - Ch149/Zoom Scan (7x7x9)/Cube 1:** Measurement grid: dx=4mm, dy=4mm, dz=2.5mm

Reference Value = 4.165 V/m; Power Drift = 0.12 dB

Peak SAR (extrapolated) = 0.388 W/kg

**SAR(1 g) = 0.087 mW/g; SAR(10 g) = 0.033 mW/g**

Maximum value of SAR (measured) = 0.163 mW/g



## M14-11aN 20M-Ch149

Communication System: 802.11aN 20M ; Frequency: 5745 MHz ; Duty Cycle: 1:1 ; Modulation type: BPSK

Medium: MSL5800 Medium parameters used:  $f = 5745$  MHz;  $\sigma = 6.02$  mho/m;  $\epsilon_r = 49.05$ ;  $\rho = 1000$  kg/m<sup>3</sup>

Phantom section: Flat Section ; Separation distance : 0 mm (The right edge side of the EUT to the Phantom)

DASY4 Configuration:

- Probe: EX3DV4 - SN3578; ConvF(3.29, 3.29, 3.29); Calibrated: 2010/6/22
- Sensor-Surface: 2mm (Mechanical Surface Detection)
- Electronics: DAE3 Sn579; Calibrated: 2010/9/20
- Phantom: SAM Twin Phantom V4.0; Type: QD 000 P40 CA; Serial: TP 1202
- Measurement SW: DASY4, Version 4.7 (80); SEMCAD X Version 14.4.2 (2595)

**Body Position - Ch149/Area Scan (9x13x1):** Measurement grid: dx=10mm, dy=10mm

Maximum value of SAR (measured) = 0.175 mW/g

**Body Position - Ch149/Zoom Scan (7x7x9)/Cube 0:** Measurement grid: dx=4mm, dy=4mm, dz=2.5mm

Reference Value = 3.901 V/m; Power Drift = 0.10 dB

Peak SAR (extrapolated) = 0.337 W/kg

**SAR(1 g) = 0.059 mW/g; SAR(10 g) = 0.015 mW/g**

Maximum value of SAR (measured) = 0.176 mW/g

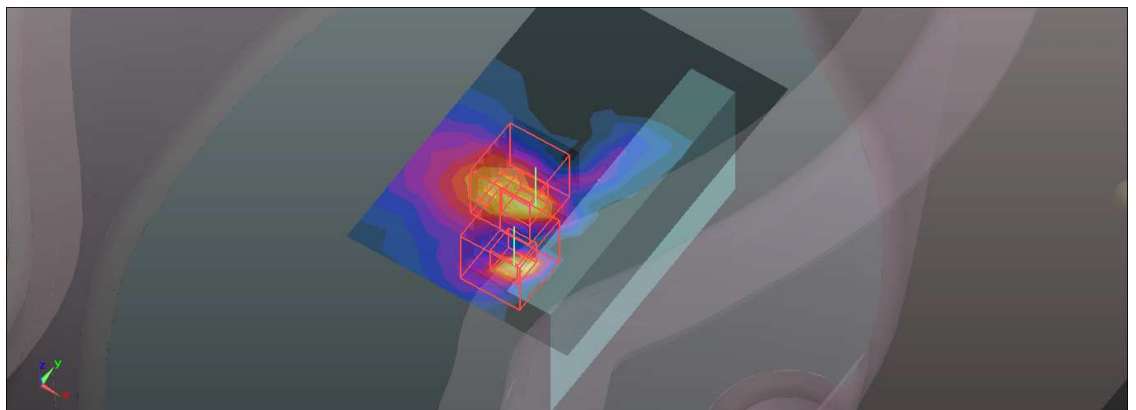
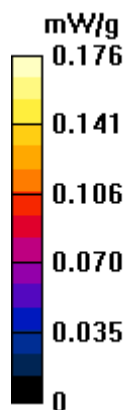
**Body Position - Ch149/Zoom Scan (7x7x9)/Cube 1:** Measurement grid: dx=4mm, dy=4mm, dz=2.5mm

Reference Value = 3.901 V/m; Power Drift = 0.10 dB

Peak SAR (extrapolated) = 0.313 W/kg

**SAR(1 g) = 0.085 mW/g; SAR(10 g) = 0.031 mW/g**

Maximum value of SAR (measured) = 0.163 mW/g



## M15-11aN 40M-Ch151

Communication System: 802.11aN 40M ; Frequency: 5755 MHz ; Duty Cycle: 1:1 ; Modulation type: BPSK

Medium: MSL5800 Medium parameters used:  $f = 5755$  MHz;  $\sigma = 6.03$  mho/m;  $\epsilon_r = 49.03$ ;  $\rho = 1000$  kg/m<sup>3</sup>

Phantom section: Flat Section ; Separation distance : 0 mm (The right edge side of the EUT to the Phantom)

DASY4 Configuration:

- Probe: EX3DV4 - SN3578; ConvF(3.29, 3.29, 3.29); Calibrated: 2010/6/22
- Sensor-Surface: 2mm (Mechanical Surface Detection)
- Electronics: DAE3 Sn579; Calibrated: 2010/9/20
- Phantom: SAM Twin Phantom V4.0; Type: QD 000 P40 CA; Serial: TP 1202
- Measurement SW: DASY4, Version 4.7 (80); SEMCAD X Version 14.4.2 (2595)

**Body Position - Ch151/Area Scan (9x13x1):** Measurement grid: dx=10mm, dy=10mm

Maximum value of SAR (measured) = 0.148 mW/g

**Body Position - Ch151/Zoom Scan (7x7x9)/Cube 0:** Measurement grid: dx=4mm, dy=4mm, dz=2.5mm

Reference Value = 2.748 V/m; Power Drift = 0.10 dB

Peak SAR (extrapolated) = 0.324 W/kg

**SAR(1 g) = 0.053 mW/g; SAR(10 g) = 0.014 mW/g**

Maximum value of SAR (measured) = 0.159 mW/g

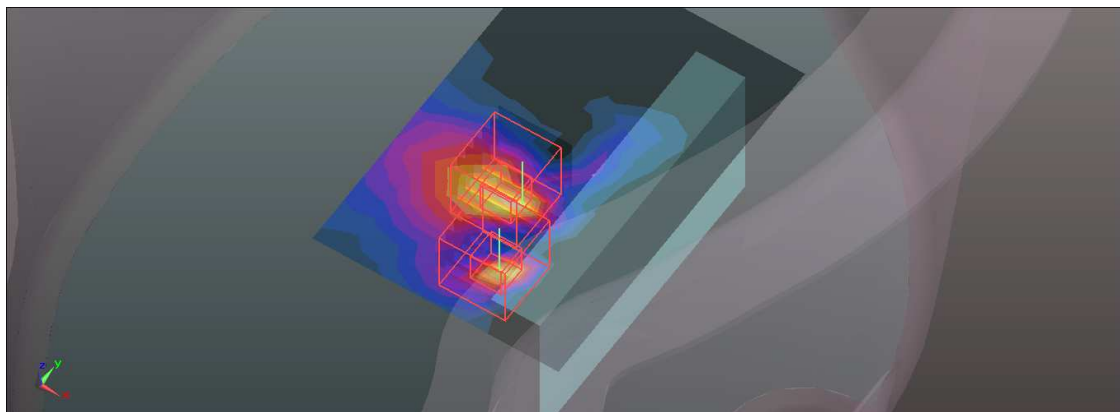
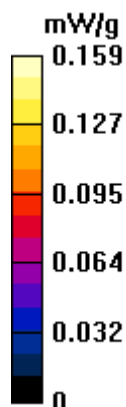
**Body Position - Ch151/Zoom Scan (7x7x9)/Cube 1:** Measurement grid: dx=4mm, dy=4mm, dz=2.5mm

Reference Value = 2.748 V/m; Power Drift = 0.10 dB

Peak SAR (extrapolated) = 0.269 W/kg

**SAR(1 g) = 0.075 mW/g; SAR(10 g) = 0.028 mW/g**

Maximum value of SAR (measured) = 0.147 mW/g



## M16-11a-Ch149

Communication System: 802.11a ; Frequency: 5745 MHz ; Duty Cycle: 1:1 ; Modulation type: BPSK  
Medium: MSL5800 Medium parameters used:  $f = 5745$  MHz;  $\sigma = 6.02$  mho/m;  $\epsilon_r = 49.05$ ;  $\rho = 1000$  kg/m<sup>3</sup>

Phantom section: Flat Section ; Separation distance : 0 mm (The left edge side of the EUT to the Phantom)

DASY4 Configuration:

- Probe: EX3DV4 - SN3578; ConvF(3.29, 3.29, 3.29); Calibrated: 2010/6/22
- Sensor-Surface: 2mm (Mechanical Surface Detection)
- Electronics: DAE3 Sn579; Calibrated: 2010/9/20
- Phantom: SAM Twin Phantom V4.0; Type: QD 000 P40 CA; Serial: TP 1202
- Measurement SW: DASY4, Version 4.7 (80); SEMCAD X Version 14.4.2 (2595)

**Body Position - Ch149/Area Scan (6x13x1):** Measurement grid: dx=10mm, dy=10mm  
Maximum value of SAR (measured) = 0.301 mW/g

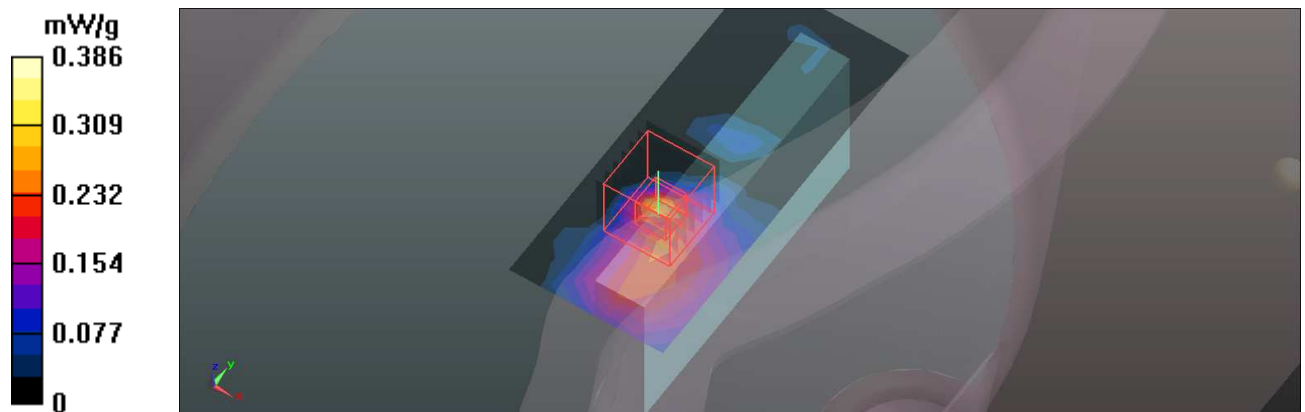
**Body Position - Ch149/Zoom Scan (7x7x9)/Cube 0:** Measurement grid: dx=4mm, dy=4mm, dz=2.5mm

Reference Value = 5.972 V/m; Power Drift = 0.14 dB

Peak SAR (extrapolated) = 0.646 W/kg

**SAR(1 g) = 0.174 mW/g; SAR(10 g) = 0.054 mW/g**

Maximum value of SAR (measured) = 0.386 mW/g



## M17-11aN 20M-Ch149

Communication System: 802.11aN 20M ; Frequency: 5745 MHz ; Duty Cycle: 1:1 ; Modulation type: BPSK

Medium: MSL5800 Medium parameters used:  $f = 5745$  MHz;  $\sigma = 6.04$  mho/m;  $\epsilon_r = 49.20$ ;  $\rho = 1000$  kg/m<sup>3</sup>

Phantom section: Flat Section ; Separation distance : 0 mm (The left edge side of the EUT to the Phantom)

DASY4 Configuration:

- Probe: EX3DV4 - SN3578; ConvF(3.29, 3.29, 3.29); Calibrated: 2010/6/22
- Sensor-Surface: 2mm (Mechanical Surface Detection)
- Electronics: DAE3 Sn579; Calibrated: 2010/9/20
- Phantom: SAM Twin Phantom V4.0; Type: QD 000 P40 CA; Serial: TP 1202
- Measurement SW: DASY4, Version 4.7 (80); SEMCAD X Version 14.4.2 (2595)

**Body Position - Ch149/Area Scan (6x13x1):** Measurement grid: dx=10mm, dy=10mm  
Maximum value of SAR (measured) = 0.347 mW/g

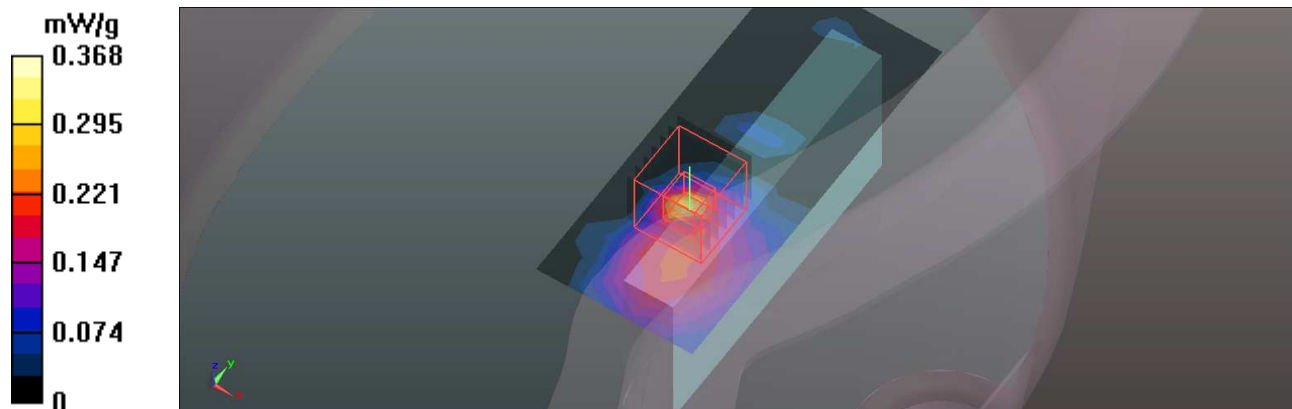
**Body Position - Ch149/Zoom Scan (7x7x9)/Cube 0:** Measurement grid: dx=4mm, dy=4mm, dz=2.5mm

Reference Value = 6.433 V/m; Power Drift = -0.12 dB

Peak SAR (extrapolated) = 0.668 W/kg

**SAR(1 g) = 0.173 mW/g; SAR(10 g) = 0.055 mW/g**

Maximum value of SAR (measured) = 0.368 mW/g



## M18-11aN 40M-Ch151

Communication System: 802.11aN 40M ; Frequency: 5755 MHz ; Duty Cycle: 1:1 ; Modulation type: BPSK

Medium: MSL5800 Medium parameters used:  $f = 5755$  MHz;  $\sigma = 6.05$  mho/m;  $\epsilon_r = 49.18$ ;  $\rho = 1000$  kg/m<sup>3</sup>

Phantom section: Flat Section ; Separation distance : 0 mm (The left edge side of the EUT to the Phantom)

DASY4 Configuration:

- Probe: EX3DV4 - SN3578; ConvF(3.29, 3.29, 3.29); Calibrated: 2010/6/22
- Sensor-Surface: 2mm (Mechanical Surface Detection)
- Electronics: DAE3 Sn579; Calibrated: 2010/9/20
- Phantom: SAM Twin Phantom V4.0; Type: QD 000 P40 CA; Serial: TP 1202
- Measurement SW: DASY4, Version 4.7 (80); SEMCAD X Version 14.4.2 (2595)

**Body Position - Ch151/Area Scan (6x13x1):** Measurement grid: dx=10mm, dy=10mm  
Maximum value of SAR (measured) = 0.298 mW/g

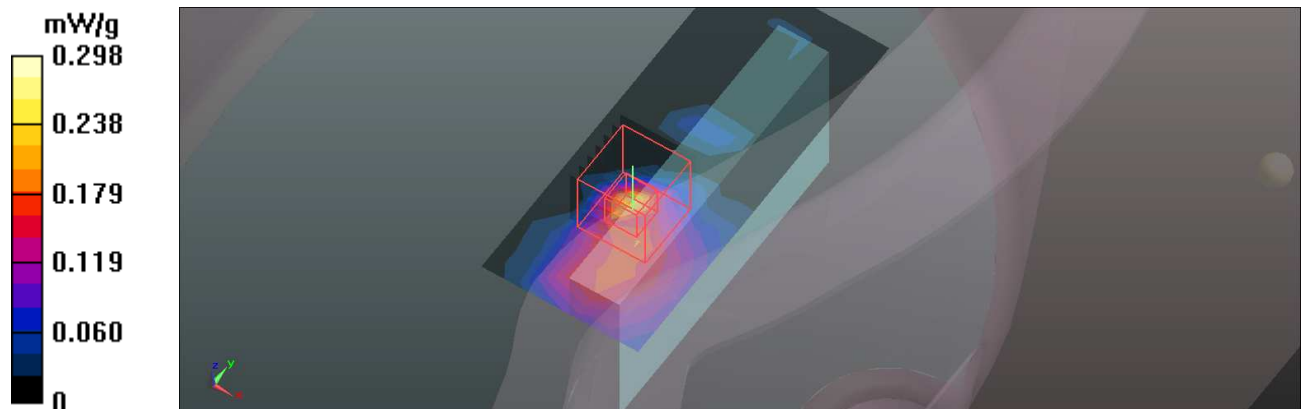
**Body Position - Ch151/Zoom Scan (7x7x9)/Cube 0:** Measurement grid: dx=4mm, dy=4mm, dz=2.5mm

Reference Value = 6.250 V/m; Power Drift = 0.10 dB

Peak SAR (extrapolated) = 1.365 W/kg

**SAR(1 g) = 0.142 mW/g; SAR(10 g) = 0.048 mW/g**

Maximum value of SAR (measured) = 0.290 mW/g



## M19-11a-Ch149

Communication System: 802.11a ; Frequency: 5745 MHz ; Duty Cycle: 1:1 ; Modulation type: BPSK  
Medium: MSL5800 Medium parameters used:  $f = 5745$  MHz;  $\sigma = 6.04$  mho/m;  $\epsilon_r = 49.20$ ;  $\rho = 1000$  kg/m<sup>3</sup>

Phantom section: Flat Section ; Separation distance : 0 mm (The top edge side of the EUT to the Phantom)

DASY4 Configuration:

- Probe: EX3DV4 - SN3578; ConvF(3.29, 3.29, 3.29); Calibrated: 2010/6/22
- Sensor-Surface: 2mm (Mechanical Surface Detection)
- Electronics: DAE3 Sn579; Calibrated: 2010/9/20
- Phantom: SAM Twin Phantom V4.0; Type: QD 000 P40 CA; Serial: TP 1202
- Measurement SW: DASY4, Version 4.7 (80); SEMCAD X Version 14.4.2 (2595)

**Body Position - Ch149/Area Scan (8x6x1):** Measurement grid: dx=10mm, dy=10mm  
Maximum value of SAR (measured) = 0.498 mW/g

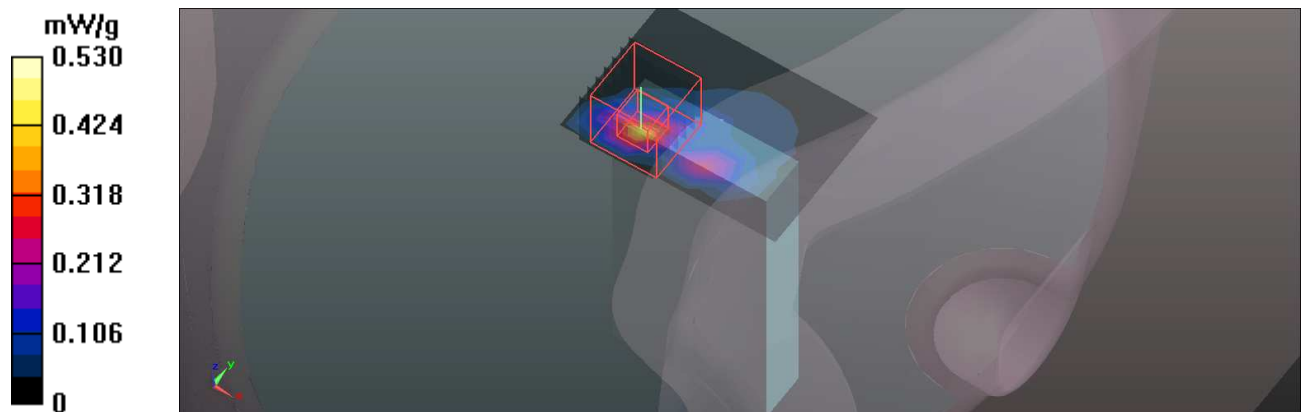
**Body Position - Ch149/Zoom Scan (7x7x9)/Cube 0:** Measurement grid: dx=4mm, dy=4mm, dz=2.5mm

Reference Value = 5.817 V/m; Power Drift = -0.02 dB

Peak SAR (extrapolated) = 1.129 W/kg

**SAR(1 g) = 0.197 mW/g; SAR(10 g) = 0.047 mW/g**

Maximum value of SAR (measured) = 0.530 mW/g





## M20-11aN 20M-Ch149

Communication System: 802.11aN 20M ; Frequency: 5745 MHz ; Duty Cycle: 1:1 ; Modulation type: BPSK

Medium: MSL5800 Medium parameters used:  $f = 5745$  MHz;  $\sigma = 6.04$  mho/m;  $\epsilon_r = 49.20$ ;  $\rho = 1000$  kg/m<sup>3</sup>

Phantom section: Flat Section ; Separation distance : 0 mm (The top edge side of the EUT to the Phantom)

DASY4 Configuration:

- Probe: EX3DV4 - SN3578; ConvF(3.29, 3.29, 3.29); Calibrated: 2010/6/22
- Sensor-Surface: 2mm (Mechanical Surface Detection)
- Electronics: DAE3 Sn579; Calibrated: 2010/9/20
- Phantom: SAM Twin Phantom V4.0; Type: QD 000 P40 CA; Serial: TP 1202
- Measurement SW: DASY4, Version 4.7 (80); SEMCAD X Version 14.4.2 (2595)

**Body Position - Ch149/Area Scan (8x6x1):** Measurement grid: dx=10mm, dy=10mm  
Maximum value of SAR (measured) = 0.630 mW/g

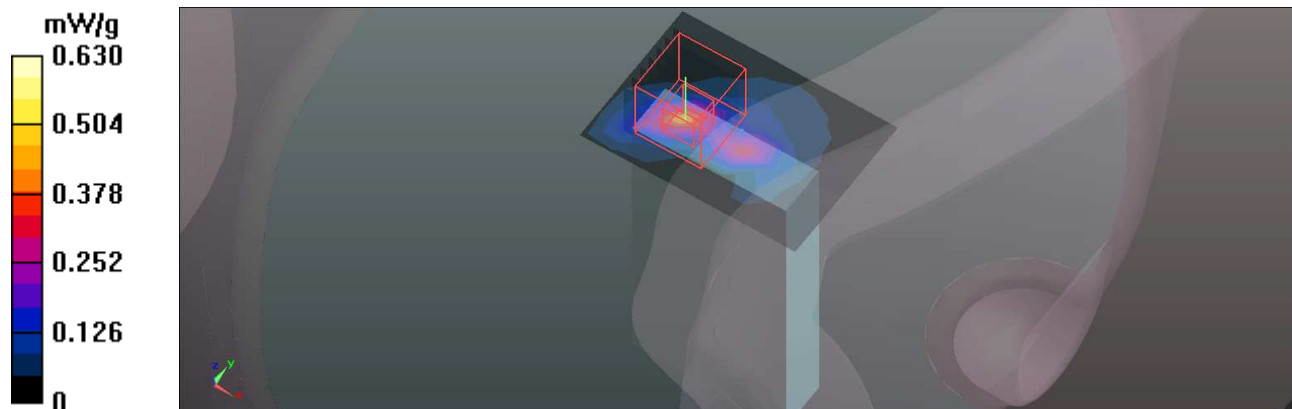
**Body Position - Ch149/Zoom Scan (7x7x9)/Cube 0:** Measurement grid: dx=4mm, dy=4mm, dz=2.5mm

Reference Value = 5.018 V/m; Power Drift = -0.13 dB

Peak SAR (extrapolated) = 1.213 W/kg

**SAR(1 g) = 0.206 mW/g; SAR(10 g) = 0.048 mW/g**

Maximum value of SAR (measured) = 0.541 mW/g



## M21-11aN 40M-Ch151

Communication System: 802.11aN 40M ; Frequency: 5755 MHz ; Duty Cycle: 1:1 ; Modulation type: BPSK

Medium: MSL5800 Medium parameters used:  $f = 5755$  MHz;  $\sigma = 6.05$  mho/m;  $\epsilon_r = 49.18$ ;  $\rho = 1000$  kg/m<sup>3</sup>

Phantom section: Flat Section ; Separation distance : 0 mm (The top edge side of the EUT to the Phantom)

DASY4 Configuration:

- Probe: EX3DV4 - SN3578; ConvF(3.29, 3.29, 3.29); Calibrated: 2010/6/22
- Sensor-Surface: 2mm (Mechanical Surface Detection)
- Electronics: DAE3 Sn579; Calibrated: 2010/9/20
- Phantom: SAM Twin Phantom V4.0; Type: QD 000 P40 CA; Serial: TP 1202
- Measurement SW: DASY4, Version 4.7 (80); SEMCAD X Version 14.4.2 (2595)

**Body Position - Ch151/Area Scan (8x6x1):** Measurement grid: dx=10mm, dy=10mm  
Maximum value of SAR (measured) = 0.707 mW/g

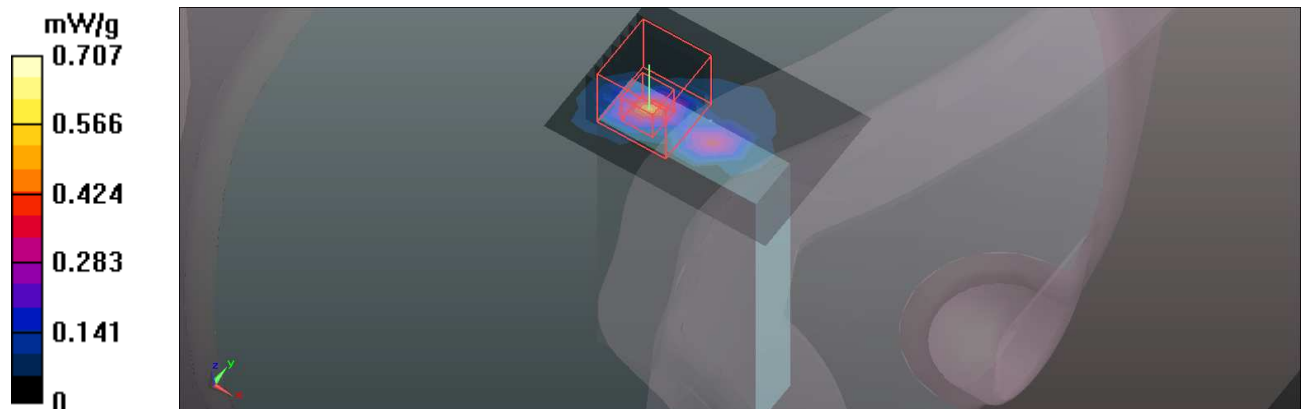
**Body Position - Ch151/Zoom Scan (7x7x9)/Cube 0:** Measurement grid: dx=4mm, dy=4mm, dz=2.5mm

Reference Value = 2.054 V/m; Power Drift = 0.11 dB

Peak SAR (extrapolated) = 1.380 W/kg

**SAR(1 g) = 0.253 mW/g; SAR(10 g) = 0.059 mW/g**

Maximum value of SAR (measured) = 0.614 mW/g



## M22-11a-Ch149

Communication System: 802.11a ; Frequency: 5745 MHz ; Duty Cycle: 1:1 ; Modulation type: BPSK  
Medium: MSL5800 Medium parameters used:  $f = 5745$  MHz;  $\sigma = 6.04$  mho/m;  $\epsilon_r = 49.20$ ;  $\rho = 1000$  kg/m<sup>3</sup>

Phantom section: Flat Section ; Separation distance : 0 mm (The bottom edge side of the EUT to the Phantom)

DASY4 Configuration:

- Probe: EX3DV4 - SN3578; ConvF(3.29, 3.29, 3.29); Calibrated: 2010/6/22
- Sensor-Surface: 2mm (Mechanical Surface Detection)
- Electronics: DAE3 Sn579; Calibrated: 2010/9/20
- Phantom: SAM Twin Phantom V4.0; Type: QD 000 P40 CA; Serial: TP 1202
- Measurement SW: DASY4, Version 4.7 (80); SEMCAD X Version 14.4.2 (2595)

**Body Position - Ch149/Area Scan (8x6x1):** Measurement grid: dx=10mm, dy=10mm  
Maximum value of SAR (measured) = 0.083 mW/g

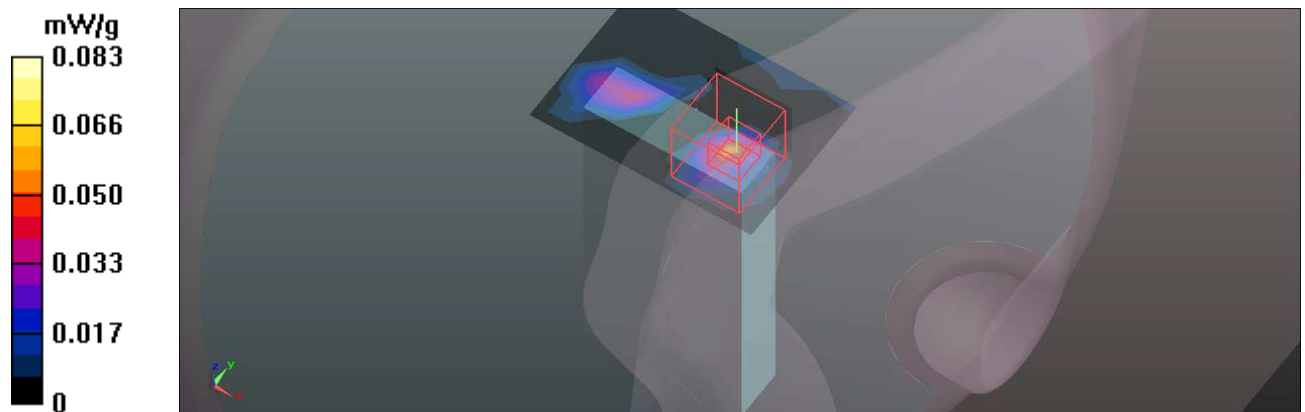
**Body Position - Ch149/Zoom Scan (7x7x9)/Cube 0:** Measurement grid: dx=4mm, dy=4mm, dz=2.5mm

Reference Value = 1.847 V/m; Power Drift = -0.17 dB

Peak SAR (extrapolated) = 0.204 W/kg

**SAR(1 g) = 0.031 mW/g; SAR(10 g) = 0.00706 mW/g**

Maximum value of SAR (measured) = 0.080 mW/g



## M23-11aN 20M-Ch149

Communication System: 802.11aN 20M ; Frequency: 5745 MHz ; Duty Cycle: 1:1 ; Modulation type: BPSK

Medium: MSL5800 Medium parameters used:  $f = 5745$  MHz;  $\sigma = 6.04$  mho/m;  $\epsilon_r = 49.20$ ;  $\rho = 1000$  kg/m<sup>3</sup>

Phantom section: Flat Section ; Separation distance : 0 mm (The bottom edge side of the EUT to the Phantom)

DASY4 Configuration:

- Probe: EX3DV4 - SN3578; ConvF(3.29, 3.29, 3.29); Calibrated: 2010/6/22
- Sensor-Surface: 2mm (Mechanical Surface Detection)
- Electronics: DAE3 Sn579; Calibrated: 2010/9/20
- Phantom: SAM Twin Phantom V4.0; Type: QD 000 P40 CA; Serial: TP 1202
- Measurement SW: DASY4, Version 4.7 (80); SEMCAD X Version 14.4.2 (2595)

**Body Position - Ch149/Area Scan (8x6x1):** Measurement grid: dx=10mm, dy=10mm  
Maximum value of SAR (measured) = 0.088 mW/g

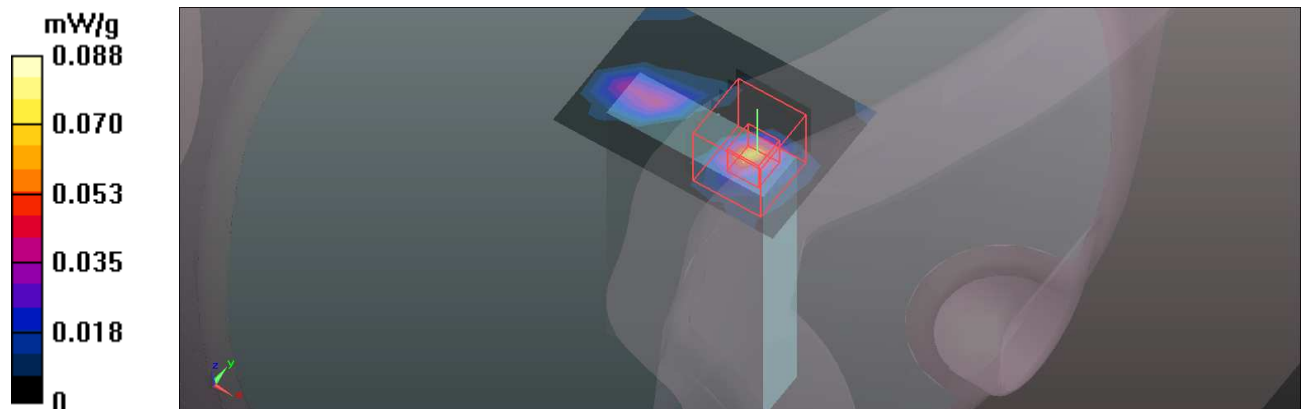
**Body Position - Ch149/Zoom Scan (7x7x9)/Cube 0:** Measurement grid: dx=4mm, dy=4mm, dz=2.5mm

Reference Value = 1.429 V/m; Power Drift = -0.16 dB

Peak SAR (extrapolated) = 0.399 W/kg

**SAR(1 g) = 0.037 mW/g; SAR(10 g) = 0.00733 mW/g**

Maximum value of SAR (measured) = 0.083 mW/g



## M24-11aN 40M-Ch151

Communication System: 802.11aN 40M ; Frequency: 5755 MHz ; Duty Cycle: 1:1 ; Modulation type: BPSK

Medium: MSL5800 Medium parameters used:  $f = 5755$  MHz;  $\sigma = 6.05$  mho/m;  $\epsilon_r = 49.18$ ;  $\rho = 1000$  kg/m<sup>3</sup>

Phantom section: Flat Section ; Separation distance : 0 mm (The bottom edge side of the EUT to the Phantom)

DASY4 Configuration:

- Probe: EX3DV4 - SN3578; ConvF(3.29, 3.29, 3.29); Calibrated: 2010/6/22
- Sensor-Surface: 2mm (Mechanical Surface Detection)
- Electronics: DAE3 Sn579; Calibrated: 2010/9/20
- Phantom: SAM Twin Phantom V4.0; Type: QD 000 P40 CA; Serial: TP 1202
- Measurement SW: DASY4, Version 4.7 (80); SEMCAD X Version 14.4.2 (2595)

**Body Position - Ch151/Area Scan (8x6x1):** Measurement grid: dx=10mm, dy=10mm

Maximum value of SAR (measured) = 0.062 mW/g

**Body Position - Ch151/Zoom Scan (7x7x9)/Cube 0:** Measurement grid: dx=4mm, dy=4mm, dz=2.5mm

Reference Value = 1.391 V/m; Power Drift = -0.14 dB

Peak SAR (extrapolated) = 0.330 W/kg

**SAR(1 g) = 0.029 mW/g; SAR(10 g) = 0.00497 mW/g**

Maximum value of SAR (measured) = 0.064 mW/g

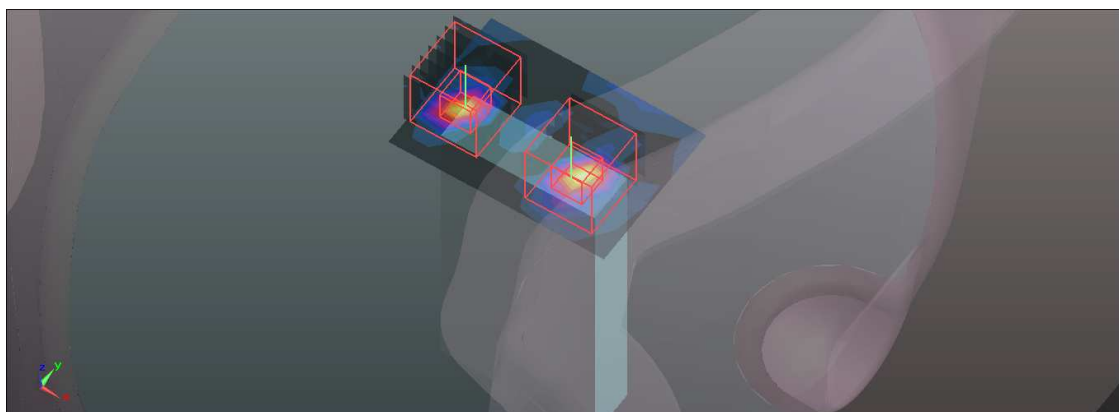
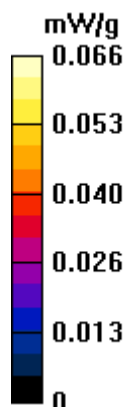
**Body Position - Ch151/Zoom Scan (7x7x9)/Cube 1:** Measurement grid: dx=4mm, dy=4mm, dz=2.5mm

Reference Value = 1.391 V/m; Power Drift = -0.14 dB

Peak SAR (extrapolated) = 0.348 W/kg

**SAR(1 g) = 0.022 mW/g; SAR(10 g) = 0.00253 mW/g**

Maximum value of SAR (measured) = 0.066 mW/g



## SystemPerformanceCheck-D2450V2-MSL2450MHz

**DUT: Dipole 2450 MHz ; Type: D2450V2 ; Serial: D2450V2 - SN:737 ; Test Frequency: 2450 MHz**

Communication System: CW ; Frequency: 2450 MHz; Duty Cycle: 1:1; Modulation type: CW  
Medium: MSL2450; Medium parameters used:  $f = 2450$  MHz;  $\sigma = 1.98$  mho/m;  $\epsilon_r = 53.56$ ;  $\rho = 1000$  kg/m<sup>3</sup> ; Liquid level : 150 mm

Phantom section: Flat Section ; Separation distance : 10 mm (The feet point of the dipole to the Phantom) Air temp. : 21.7 degrees ; Liquid temp. : 20.5 degrees

DASY4 Configuration:

- Probe: EX3DV4 - SN3578; ConvF(6.51, 6.51, 6.51); Calibrated: 2010/6/22
- Sensor-Surface: 2mm (Mechanical Surface Detection)
- Electronics: DAE3 Sn579; Calibrated: 2010/9/20
- Phantom: SAM Twin Phantom V4.0; Type: QD 000 P40 CA; Serial: TP 1202
- Measurement SW: DASY4, Version 4.7 (80); SEMCAD X Version 14.4.2 (2595)

**d=10mm, Pin=250mW/Area Scan (7x7x1):** Measurement grid: dx=15mm, dy=15mm  
Maximum value of SAR (measured) = 13.589 mW/g

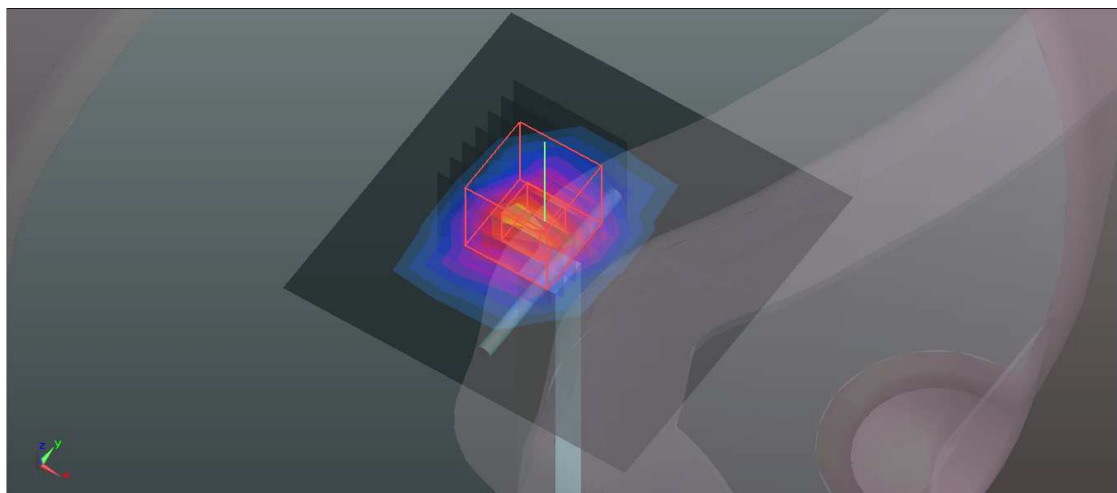
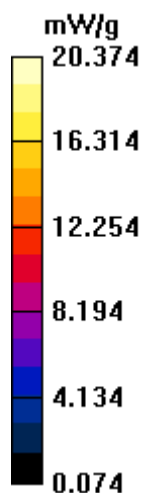
**d=10mm, Pin=250mW/Zoom Scan (7x7x7)/Cube 0:** Measurement grid: dx=5mm, dy=5mm, dz=5mm

Reference Value = 98.787 V/m; Power Drift = 0.0014 dB

Peak SAR (extrapolated) = 29.083 W/kg

**SAR(1 g) = 13.1 mW/g; SAR(10 g) = 5.84 mW/g**

Maximum value of SAR (measured) = 20.374 mW/g



## SystemPerformanceCheck-D5GHz-uniform-MSL5800 MHz

**DUT: Dipole 5 GHz ; Type: D5GHzV2 ; Serial: 1018 ; Test Frequency: 5800 MHz**

Communication System: CW-5GHz ; Frequency: 5800 MHz; Duty Cycle: 1:1; Modulation type: CW  
Medium: MSL5800;Medium parameters used:  $f = 5800$  MHz;  $\sigma = 6.1$  mho/m;  $\epsilon_r = 48.92$ ;  $\rho = 1000$  kg/m<sup>3</sup> ; Liquid level : 150 mm

Phantom section: Flat Section ; Separation distance : 10 mm (The feet point of the dipole to the Phantom)Air temp. : 22 degrees ; Liquid temp. : 21.2 degrees

DASY4 Configuration:

- Probe: EX3DV4 - SN3578; ConvF(3.29, 3.29, 3.29); Calibrated: 2010/6/22
- Sensor-Surface: 2mm (Mechanical Surface Detection)
- Electronics: DAE3 Sn579; Calibrated: 2010/9/20
- Phantom: SAM Twin Phantom V4.0; Type: QD 000 P40 CA; Serial: TP 1202
- Measurement SW: DASY4, Version 4.7 (80); SEMCAD X Version 14.4.2 (2595)

**d=10mm, Pin=100mW, f=5800 MHz/Area Scan (10x10x1):** Measurement grid: dx=10mm, dy=10mm

Maximum value of SAR (measured) = 13.820 mW/g

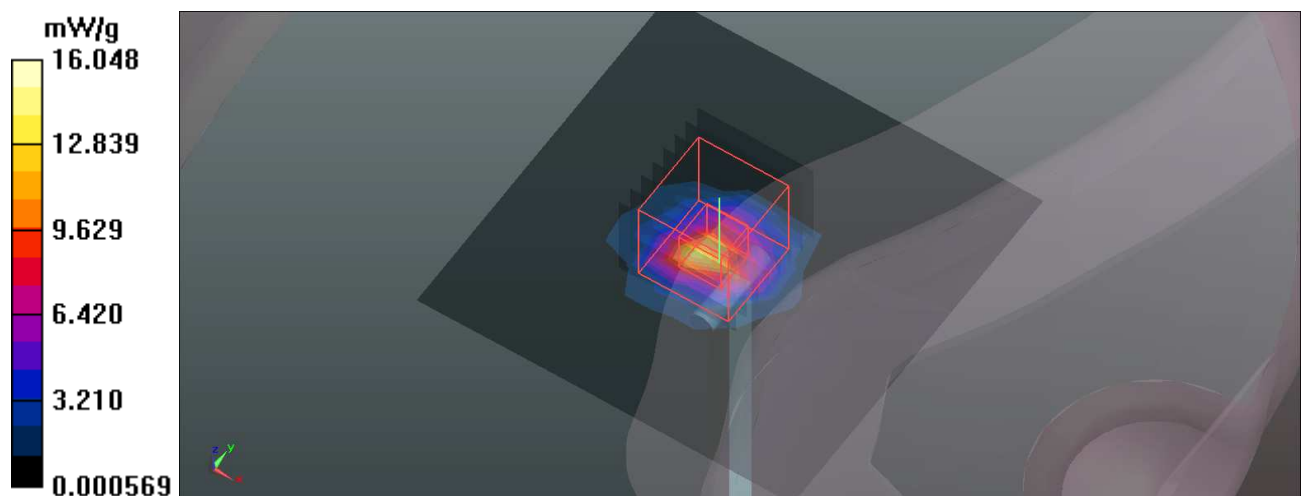
**d=10mm, Pin=100mW, f=5800 MHz/Zoom Scan (4x4x2.5mm), dist=2mm (8x8x10)/Cube 0:** Measurement grid: dx=4mm, dy=4mm, dz=2.5mm

Reference Value = 56.875 V/m; Power Drift = 0.05 dB

Peak SAR (extrapolated) = 30.501 W/kg

**SAR(1 g) = 7.8 mW/g; SAR(10 g) = 2.17 mW/g**

Maximum value of SAR (measured) = 16.048 mW/g



## SystemPerformanceCheck-D5GHz-uniform-MSL5800 MHz

**DUT: Dipole 5 GHz ; Type: D5GHzV2 ; Serial: 1018 ; Test Frequency: 5800 MHz**

Communication System: CW-5GHz ; Frequency: 5800 MHz; Duty Cycle: 1:1; Modulation type: CW  
 Medium: MSL5800;Medium parameters used:  $f = 5800 \text{ MHz}$ ;  $\sigma = 6.12 \text{ mho/m}$ ;  $\epsilon_r = 49.07$ ;  $\rho = 1000 \text{ kg/m}^3$  ; Liquid level : 150 mm

Phantom section: Flat Section ; Separation distance : 10 mm (The feet point of the dipole to the Phantom)Air temp. : 22.3 degrees ; Liquid temp. : 21.2 degrees

DASY4 Configuration:

- Probe: EX3DV4 - SN3578; ConvF(3.29, 3.29, 3.29); Calibrated: 2010/6/22
- Sensor-Surface: 2mm (Mechanical Surface Detection)
- Electronics: DAE3 Sn579; Calibrated: 2010/9/20
- Phantom: SAM Twin Phantom V4.0; Type: QD 000 P40 CA; Serial: TP 1202
- Measurement SW: DASY4, Version 4.7 (80); SEMCAD X Version 14.4.2 (2595)

**d=10mm, Pin=100mW, f=5800 MHz/Area Scan (10x10x1):** Measurement grid: dx=10mm, dy=10mm

Maximum value of SAR (measured) = 13.509 mW/g

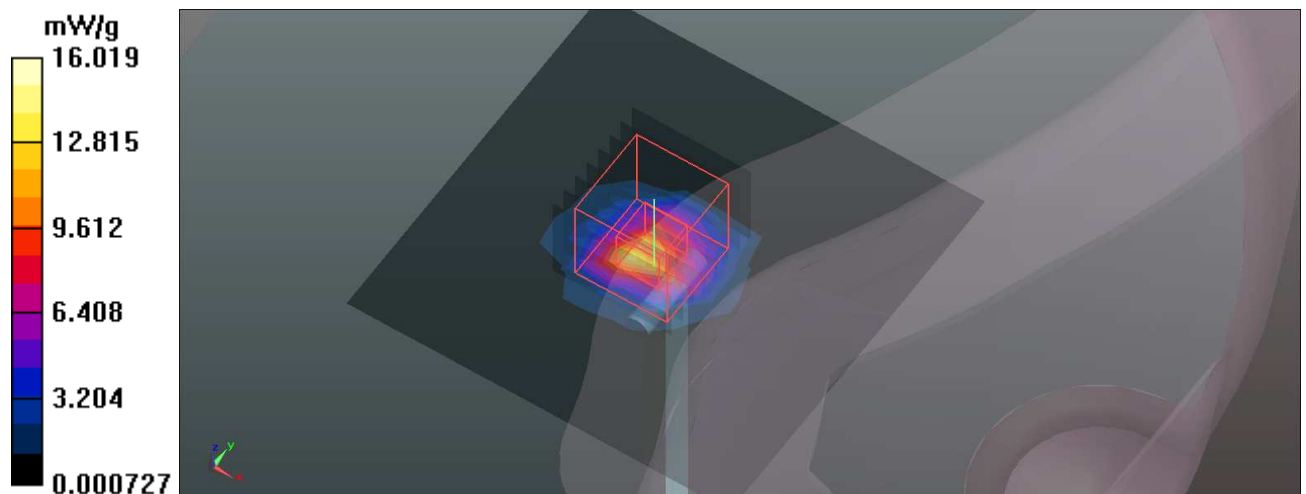
**d=10mm, Pin=100mW, f=5800 MHz/Zoom Scan (4x4x2.5mm), dist=2mm (8x8x10)/Cube 0:** Measurement grid: dx=4mm, dy=4mm, dz=2.5mm

Reference Value = 59.904 V/m; Power Drift = 0.16 dB

Peak SAR (extrapolated) = 30.625 W/kg

**SAR(1 g) = 8.02 mW/g; SAR(10 g) = 2.19 mW/g**

Maximum value of SAR (measured) = 16.019 mW/g





## APPENDIX B: BV ADT SAR MEASUREMENT SYSTEM



## APPENDIX C: PHOTOGRAPHS OF SYSTEM VALIDATION

