

LINKSYS®

A Division of Cisco Systems, Inc.



2.4GHz 802.11g Wireless-G

PCI Adapter

User Guide



Model No. **WMP54Gv4**



Copyright and Trademarks

Specifications are subject to change without notice. Linksys is a registered trademark or trademark of Cisco Systems, Inc. and/or its affiliates in the U.S. and certain other countries. Copyright © 2004 Cisco Systems, Inc. All rights reserved. Other brands and product names are trademarks or registered trademarks of their respective holders.

How to Use This User Guide

This User Guide has been designed to make understanding networking with the Wireless-G PCI Adapter easier than ever. Look for the following items when reading this User Guide:



This checkmark means there is a note of interest and is something you should pay special attention to while using the Wireless-G PCI Adapter.



This exclamation point means there is a caution or warning and is something that could damage your property or the Wireless-G PCI Adapter.



This question mark provides you with a reminder about something you might need to do while using the Wireless-G PCI Adapter.

In addition to these symbols, there are definitions for technical terms that are presented like this:

word: definition.

Also, each figure (diagram, screenshot, or other image) is provided with a figure number and description, like this:

Figure 0-1: Sample Figure Description

Figure numbers and descriptions can also be found in the “List of Figures” section in the “Table of Contents”.

Table of Contents

Chapter 1: Introduction	1
Welcome	1
What's in this Guide?	2
Chapter 2: Planning your Wireless Network	4
Network Topology	4
Roaming	4
Network Layout	5
Chapter 3: Software Installation and Configuration for Windows 2000, 98, and ME	6
Chapter 4: Connecting the PCI Adapter	11
Chapter 5: Driver Installation for Windows XP	13
Windows XP Wireless Zero Configuration	14
Chapter 6: Using the Wireless Network Monitor	16
Overview	16
Accessing the Wireless Network Monitor	16
The Link Information Tab	16
The Site Survey Tab	19
The Profiles Tab	20
Creating a New Profile	22
Appendix A: Troubleshooting	26
Common Problems and Solutions	26
Frequently Asked Questions	27
Appendix B: Wireless Security	30
Security Precautions	30
Security Threats Facing Wireless Networks	30
Appendix C: Windows Help	33
Appendix D: Glossary	34
Appendix E: Specifications	38
Appendix F: Warranty Information	39
Appendix G: Regulatory Information	40
Appendix H: Contact Information	42

List of Figures

Figure 3-1: The Setup Wizard's Welcome Screen	6
Figure 3-2: The License Agreement Screen	7
Figure 3-3: The Wireless Mode Screen	7
Figure 3-4: The Ad-Hoc Mode Settings Screen	8
Figure 3-5: The Wireless Security Screen	8
Figure 3-6: The Check Settings Screen	9
Figure 3-7: The Windows Digital Signature Screen	9
Figure 3-8: The Congratulations Screen	10
Figure 4-1: Your Computer's PCI slot with Adapter installed	11
Figure 4-2: Proper Positioning of the Antenna	12
Figure 5-1: XP Setup Welcome Screen	13
Figure 5-2: Windows logo testing screen	13
Figure 5-3: New Hardware Found screen	13
Figure 5-4: Windows XP Wireless Zero Configuration icon	14
Figure 5-5: Network Connection - No WEP	14
Figure 5-6: Network Connection - WEP	15
Figure 5-7: Optional Settings	15
Figure 6-1: The Link Information Tab	16
Figure 6-2: The Link Information Tab - More Information	17
Figure 6-3: The Link Information Tab - Statistics	18
Figure 6-4: The Site Survey Tab	19
Figure 6-5: The Profiles Tab	20
Figure 6-6: Importing a Profile	21
Figure 6-7: Exporting a Profile	21
Figure 6-8: The Profiles Tab	22
Figure 6-9: Create Connection Profile	22
Figure 6-10: Profiles - Network Settings	23
Figure 6-11: Profiles - Wireless Mode	23
Figure 6-12: Profiles - Ad-Hoc Settings	24
Figure 6-13: Profiles - Security Settings	24

Figure 6-14: Profiles - Confirm New Settings	25
Figure 6-15: Profiles - Congratulations	25

Chapter 1: Introduction

Welcome

Thank you for choosing the Wireless-G PCI Adapter. With this Adapter, your wireless networking experience will be faster and easier than ever.

Like all wireless products, the Adapter allows for greater range and mobility within your wireless network. This adapter communicates over the 54Mbps 802.11g wireless standard, which is almost five times faster than 802.11b. But since they share the same 2.4GHz radio band, the Adapter can also communicate with the widely used 11Mbps 802.11b standard.

PCs equipped with wireless cards and adapters can communicate without cumbersome cables. By sharing the same wireless settings, within their transmission radius, they form a wireless network.

The included Setup Wizard will walk you through configuring the adapter to your network's settings, step by step. Then just slide it into your computer's PCI Card slot and enjoy network access with the freedom of wireless.

Once you're connected, you can keep in touch with your e-mail, access the Internet, and share files and other resources such as printers and network storage with other computers on the network. At home, you can surf the web or use instant messaging to chat with friends while sitting out on the patio. Your wireless connection is protected by the new, industrial-strength security of Wireless Protected Access (WPA).

Get connected to current-standard 802.11b networks today, and be prepared for the future with the Wireless-G PCI Adapter from Linksys.

network: a series of computers or devices connected for the purpose of data sharing, storage, and/or transmission between users.

adapter: a device that adds network functionality to your PC.

Mbps: one million bits per second; a unit of measurement for data transmission

802.11g an IEEE wireless networking standard that specifies a maximum data transfer rate of 54Mbps, an operating frequency of 2.4GHz, and backward compatibility with 802.11b devices.

802.11b: an IEEE wireless networking standard that specifies a maximum data transfer rate of 11Mbps and an operating frequency of 2.4GHz

What's in this Guide?

This user guide covers the steps for setting up and using the Wireless-G PCI Adapter.

- **Chapter 1: Introduction**
This chapter describes the Adapter's applications and this User Guide.
- **Chapter 2: Planning Your Wireless Network**
This chapter discusses a few of the basics about wireless networking.
- **Chapter 3: Getting to Know the Wireless-G PCI Adapter**
This chapter describes the physical features of the Adapter.
- **Chapter 4: Software Installation and Configuration**
This chapter instructs you on how to install the Adapter's Setup Wizard and Configure the Adapter
- **Chapter 5: Hardware Installation**
This chapter shows you how to connect the Adapter to your PC.
- **Chapter 6: Using the Wireless Network Monitor**
This chapter show you how to use the Adapter's Wireless Network Monitor.
- **Appendix A: Troubleshooting**
This appendix describes some problems and solutions, as well as frequently asked questions, regarding installation and use of the Adapter.
- **Appendix B: Wireless Security**
This appendix discusses security issues regarding wireless networking and measures you can take to help protect your wireless network.
- **Appendix C: Windows Help**
This appendix describes how you can use Windows Help for instructions about networking, such as installing the TCP/IP protocol.
- **Appendix D: Glossary**
This appendix gives a brief glossary of terms frequently used in networking.
- **Appendix E: Specifications**
This appendix provides the Adapter's technical specifications.
- **Appendix F: Warranty Information**
This appendix supplies the Adapter's warranty information.

Wireless-G PCI Adapter

- **Appendix G: Regulatory Information**
This appendix supplies the Adapter's regulatory information.
- **Appendix H: Contact Information**
This appendix provides contact information for a variety of Linksys resources, including Technical Support.

Chapter 2: Planning your Wireless Network

Network Topology

A wireless network is a group of computers, each equipped with one wireless adapter. Computers in a wireless network must be configured to share the same radio channel. Several PCs equipped with wireless cards or adapters can communicate with one another to form an ad-hoc network.

Linksys wireless adapters also provide users access to a wired network when using an access point or wireless router. An integrated wireless and wired network is called an infrastructure network. Each wireless PC in an infrastructure network can talk to any computer in a wired network infrastructure via the access point or wireless router.

An infrastructure configuration extends the accessibility of a wireless PC to a wired network, and can double the effective wireless transmission range for two wireless adapter PCs. Since an access point is able to forward data within a network, the effective transmission range in an infrastructure network can be doubled.

Roaming

Infrastructure mode also supports roaming capabilities for mobile users. Roaming means that you can move your wireless PC within your network and the access points will pick up the wireless PC's signal, providing that they both share the same channel and SSID.

Before enabling you consider roaming, choose a feasible radio channel and optimum access point position. Proper access point positioning combined with a clear radio signal will greatly enhance performance.

topology: the physical layout of a network.

ad-hoc: a group of wireless devices communicating directly with each other (peer-to-peer) without the use of an access point.

access point: a device that allows wireless-equipped computers and other devices to communicate with a wired network. Also used to expand the range of a wireless network

infrastructure: a wireless network that is bridged to a wired network via an access point.

roaming: the ability to take a wireless device from one access point's range to another without losing the connection.

ssid: your wireless network's name.

Network Layout

Linksys wireless access points and wireless routers have been designed for use with 802.11a, 802.11b, and 802.11g products. With 802.11g products communicating with the 802.11b standard and some products incorporating both "a" and "g", products using these standards can communicate with each other.

Access points and wireless routers are compatible with 802.11a, 802.11b and 802.11g adapters, such as the PC Cards for your laptop computers, PCI Card for your desktop PC, and USB Adapters for when you want to enjoy USB connectivity. Wireless products will also communicate with the wireless PrintServer.

When you wish to connect your wired network with your wireless network, network ports on access points and wireless routers can be connected to any of Linksys's switches or routers.

With these, and many other, Linksys products, your networking options are limitless. Go to the Linksys website at www.linksys.com for more information about wireless products.

switch: a data switch that connects computing devices to host computers, allowing a large number of devices to share a limited number of ports

router: a networking device that connects multiple networks together

Chapter 3: Software Installation and Configuration for Windows 2000, 98 SE, and ME

The Wireless-G PCI Adapter Setup Wizard will guide you through the installation procedure. The Setup Wizard will install the Wireless Network Monitor and driver, as well as configure the Adapter.

1. Insert the Setup Wizard CD-ROM into your CD-ROM drive. The Setup Wizard should run automatically, and the Welcome screen should appear. If it does not, click the **Start** button and choose **Run**. In the field that appears, enter **D:\setup.exe** (if "D" is the letter of your CD-ROM drive).

Click the **Install** button to continue the installation process. Clicking **User Guide** opened this User Guide. To close the Setup Wizard, click the **Exit** button.



IMPORTANT: You must run the Setup Wizard to install the software before connecting the Adapter. If you are running Windows XP, connect the Adapter as shown in Chapter 4 and proceed to Chapter 5.



Figure 3-1: The Setup Wizard's Welcome Screen

software: Instructions for the computer. A series of instructions that performs a particular task is called a "program".

2. Read the License Agreement displayed on the following screen and click the **Next** button to continue the installation. If you click the **Cancel** button, you will end the installation.



Figure 3-2: The License Agreement Screen

3. The Wireless Mode screen will ask for some information about your wireless network. In the **SSID** field, enter your network's SSID (Service Set Identifier). The SSID is your network name and must be identical for all devices in the network. The default setting is **linksys** (all lowercase).

Next, choose a wireless mode. Click the **Infrastructure Mode** radio button if you want your wireless computers to network with computers on your wired network using an access point. Click the **Ad-Hoc Mode** radio button if you want multiple wireless computers to network directly with each other.

Click the **Next** button to continue, or click the **Back** button to return to the previous page.

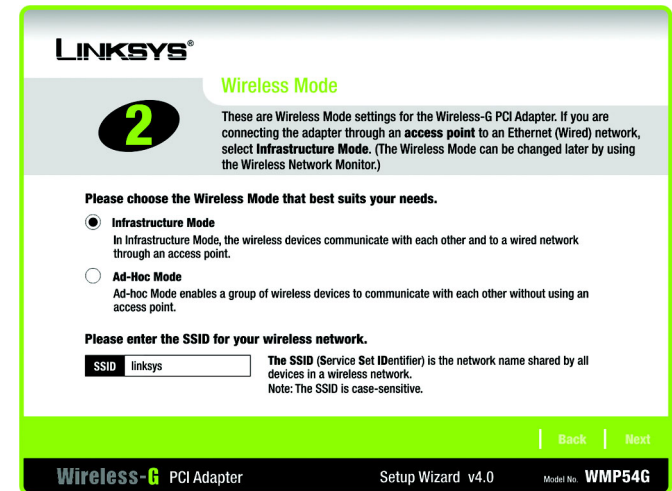


Figure 3-3: The Wireless Mode Screen

- If you chose Infrastructure Mode, go to Step 5 now. If you chose Ad-Hoc Mode, select the correct operating channel for your network from the Channel drop-down menu. Then, select the Network Mode from the drop-down menu. Click the **Next** button, and go to Step 5. Click the **Back** button to change any settings.

Channel - The channel you choose should match the channel set on the other devices in your wireless network. If you are unsure about which channel to use, select the default channel (**Channel 6**).

Network Mode - Keep the default setting, **Mixed**, if you have Wireless-G and Wireless-B devices in your network. Select **G-Only** if you have only Wireless-G devices in your network.

- The Wireless Security screen allows you to set the security level for your network. Enable or disable Wired Equivalent Privacy (WEP) encryption for your wireless network. If you enable WEP, enter a Passphrase or WEP key. Click the **Next** button to continue or the **Back** button to return to the previous screen.

WEP - If you do not want to use WEP encryption, choose Disabled. To use WEP encryption (recommended to increase network security), select 64-bit or 128-bit WEP from the drop-down menu, and enter either a Passphrase or WEP key.

Passphrase - Instead of manually entering WEP keys, you can enter a Passphrase, so that a WEP key is automatically generated. It is case-sensitive and should not be longer than 16 alphanumeric characters. This passphrase must match the passphrase of your wireless network and is compatible with other Linksys wireless products only. (If you have any non-Linksys wireless products, enter the WEP key(s) manually on those products.)

WEP Key - This WEP key must match the WEP key of your wireless network. If you are using 64-bit WEP encryption, then the key must consist of exactly ten hexadecimal characters. If you are using 128-bit WEP encryption, then the key must consist of exactly 26 hexadecimal characters. Valid hexadecimal characters are "0" to "9" and "A" to "F".

TX Key - This allows you to access different WEP keys used by different routers or access points in your network. Choose the TX Key used in that network. For instance, if the device uses TX Key 3, use TX Key 3. If you're not using multiple WEP Keys, leave this set at 1, the default setting.

Authentication - Select the Authentication method used by your network. Open Authentication does not employ WEP keys. Shared Authentication employs WEP encryption. Auto (the default setting) chooses the method of the network to which you're connecting.

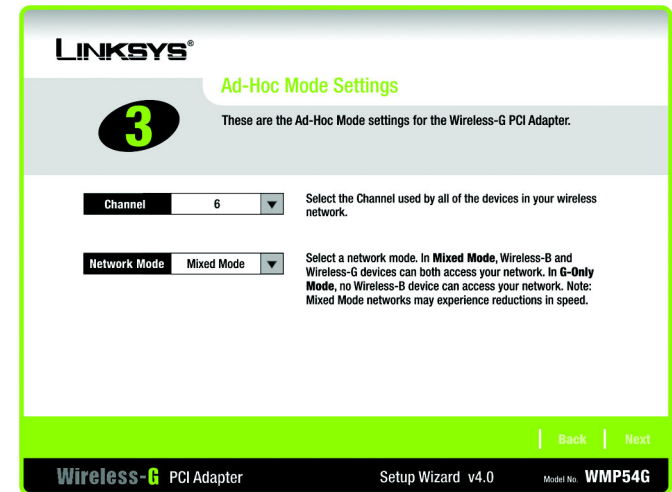


Figure 3-4: The Ad-Hoc Mode Settings Screen

bit: a binary digit

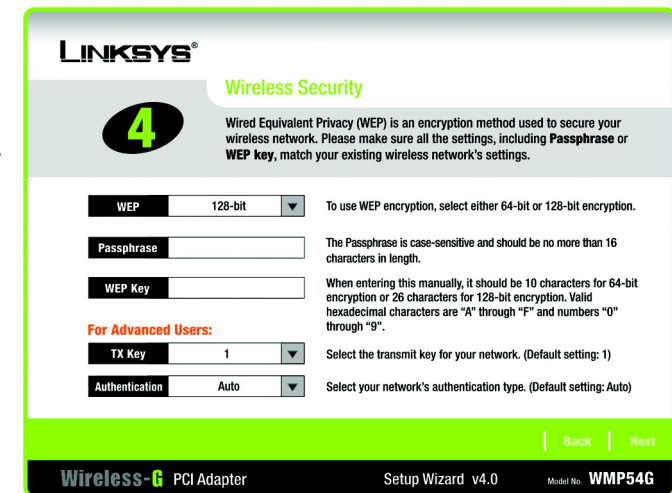


Figure 3-5: The Wireless Security Screen

encryption: encoding data transmitted in a network.

- The Setup Wizard will ask you to review your settings before it starts to copy files. Click the **Next** button to save these settings, or click the **Back** button to change any settings.

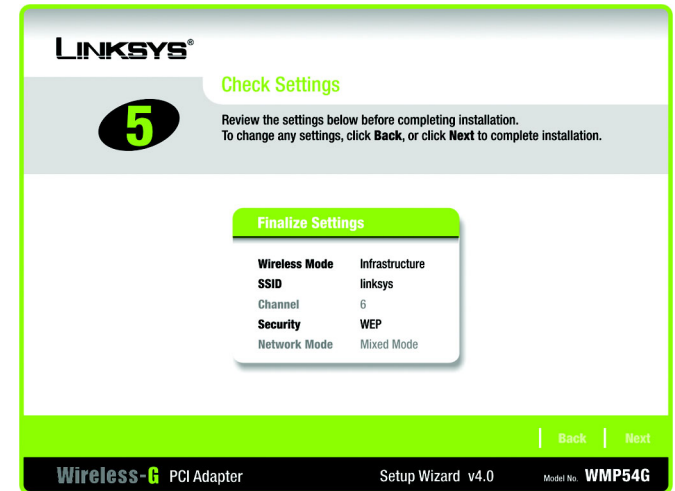


Figure 3-6: The Check Settings Screen

- At this point, a screen stating that a digital signature was not found may appear. This software has been tested and found to work properly with Windows 2000. Click the **Yes** button to continue installation.



Figure 3-7: The Windows Digital Signature Screen

Wireless-G PCI Adapter

8. After the files have been successfully copied, the Congratulations screen will appear. Click the **Exit** button.

Now that the software installation is complete, proceed to Chapter 4: Connecting the Wireless-G PCI Adapter.



Figure 3-8: The Congratulations Screen

software: instructions for the computer

Chapter 4: Connecting the PCI Adapter

1. Before connecting the PCI Adapter to your PC, turn off your desktop PC.
2. Open your PC case and locate an available PCI slot on the motherboard. Check with your computer manufacturer for instructions.
3. Slide the PCI Adapter into the PCI slot. Make sure that all of its pins are touching the slot's contacts. You may have to apply a bit of pressure to slide the adapter all the way in. After the adapter is firmly in place, secure its fastening tab to your PC's chassis with a mounting screw. Then, close your PC.



IMPORTANT: Windows 2000, 98 SE, and ME users must run the Setup Wizard to install the software before connecting the PCI Adapter.



IMPORTANT: Windows XP users must connect the PCI Adapter before installing the software, shown in Chapter 5.

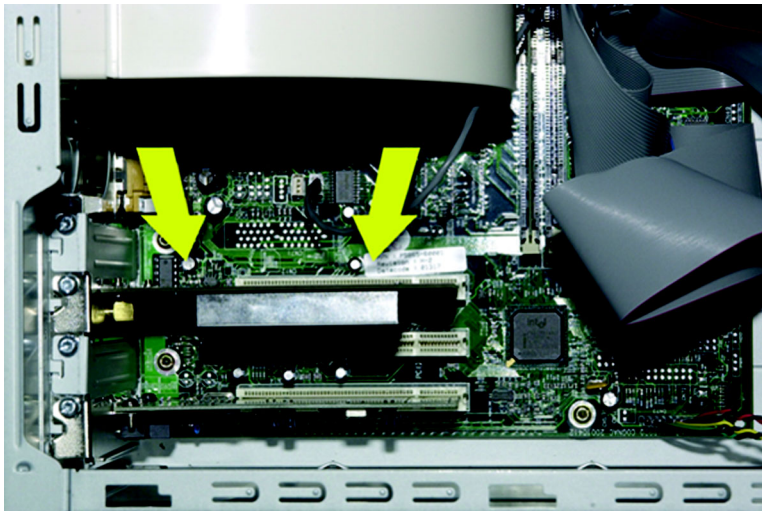


Figure 4-1: Your Computer's PCI slot with Adapter installed

4. Attach the external antenna to the adapter's antenna port.



Figure 4-2: Proper Positioning of the Antenna

port: the connection point on a computer or networking device used for plugging in a cable or an adapter.

5. Power on your desktop PC. Windows 2000 users may see a Windows Digital Signature screen, but can continue installation. Windows 98 SE users may be required to insert their Windows CD.

If your PC is running Windows XP, proceed to "Chapter 5: Driver Installation for Windows XP."

If your PC is running Windows 2000, 98 SE, and ME, the installation of the Wireless-G PCI Adapter is complete. If you want to check the link information, search for available wireless networks, or make additional configuration changes, proceed to "Chapter 6: Using the Wireless Network Monitor."

Chapter 5: Driver Installation for Windows XP

After connecting the Adapter to your PC, as shown in Chapter 4, you'll need to install the driver.

Windows XP will automatically detect the Adapter. Insert the Setup CD-ROM into the CD-ROM drive. Click the radio button next to **Install the software automatically (Recommended)**. Then, click the **Next** button.



Figure 5-1: XP Setup Welcome Screen

The next screen shows that the Wizard is complete. Click the **Finish** button. The drivers are now installed.

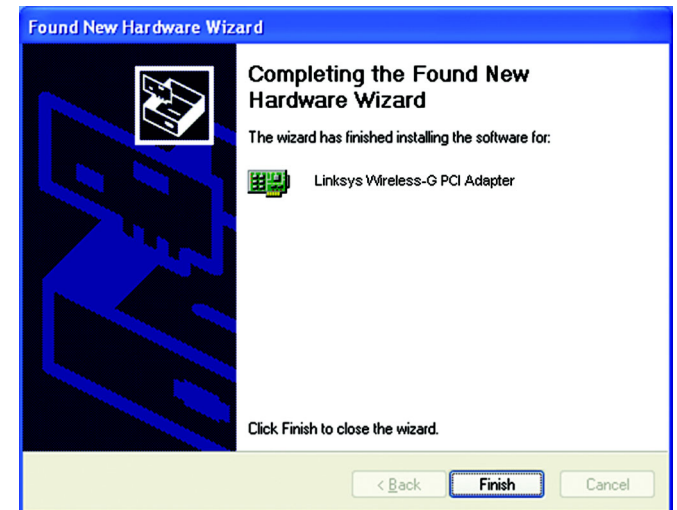


Figure 5-2: New Hardware Found screen

Windows XP Wireless Zero Configuration

1. After installing the Adapter, the Windows XP Wireless Zero Configuration icon will appear in your computer's system tray. Double-click the icon.

2. The screen that appears will show any available wireless network. Select the network you want.

If this network has WEP encryption enabled, go to step 3.

If this network does not have WEP encryption enabled, you will be asked to select a network. Make sure the box next to **Allow me to connect to the selected wireless network, even though it is not secure** is checked. Then, click the **Connect** button, and go to step 4.



NOTE: Windows XP has a built-in configuration tool. Use Windows XP Wireless Zero Configuration (in the system tray at the bottom of your screen) to configure the Adapter.

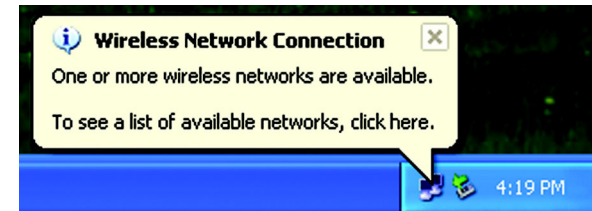


Figure 5-3: Windows XP Wireless Zero Configuration icon



NOTE: Steps 2 and 3 are the instructions and screenshots for Windows XP with Service Pack 1 installed. If you have not installed Service Pack 1, select the network you want, and click the **Connect** button. If the network has WEP encryption enabled, enter the WEP key in the Network key field, and then click the **Connect** button.

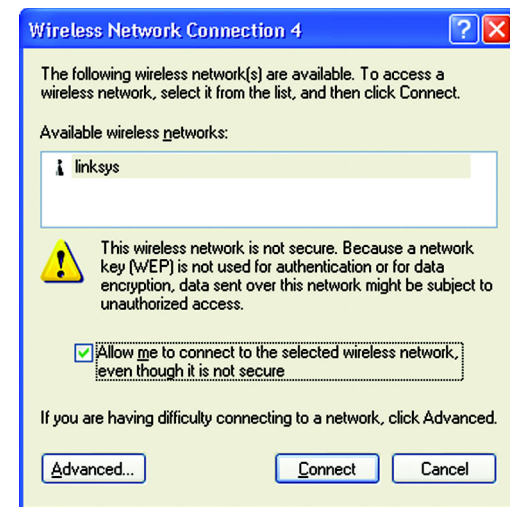


Figure 5-4: Network Connection - No WEP

Wireless-G PCI Adapter

3. If WEP is enabled, you will be asked to enter the network (WEP) key. Enter the WEP key of your wireless network in the Network key field, and re-enter it in the Confirm network key field. Then, click the **Connect** button, and proceed to step 4.

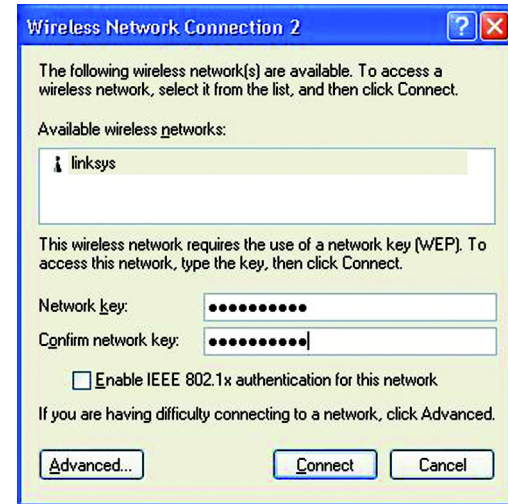


Figure 5-5: Network Connection - WEP



NOTE: Windows XP Wireless Zero Configuration does not support the use of a passphrase. Enter the exact WEP key used by your access point.



Figure 5-6: Optional Settings

4. The Zero Configuration icon, showing a connection, will appear if your connection is active.

For more information about wireless networking on a Windows XP computer, click the **Start** button, select **Help**, and choose **Support**. Enter the keyword wireless in the field provided, and press the **Enter** key.

Congratulations! The installation of the Wireless-G PCI Adapter is complete.

Chapter 6: Using the Wireless Network Monitor

Overview

Use the Wireless Network Monitor to check the link information, search for available wireless networks, or create profiles that hold different configuration settings.

Accessing the Wireless Network Monitor

After installing the Adapter's Setup Wizard, the Wireless Network Monitor icon will appear in your system tray. Double-click the icon.

The *Link Information* tab will appear. From this tab, you can find out the strength of the current wireless signal as well as its quality. You can also click the **More Information** button to view additional status information about the current wireless connection. To search for available wireless networks, click the **Site Survey** tab. To perform configuration changes, click the **Profiles** tab.

The Link Information Tab

The *Link Information* tab displays the signal strength and link quality information about the current connection and provides a button to click for additional status information.

Ad-Hoc Mode or Infrastructure Mode - The screen indicates whether the Adapter is currently working in ad-hoc or infrastructure mode.

Signal Strength - The Signal Strength bar indicates the signal strength.

Link Quality - The Link Quality bar indicates the quality of the wireless network connection.

Click the **More Information** button to view more information about the wireless network connection.

Click the **X (Close)** button in the upper right corner to exit the Wireless Network Monitor.

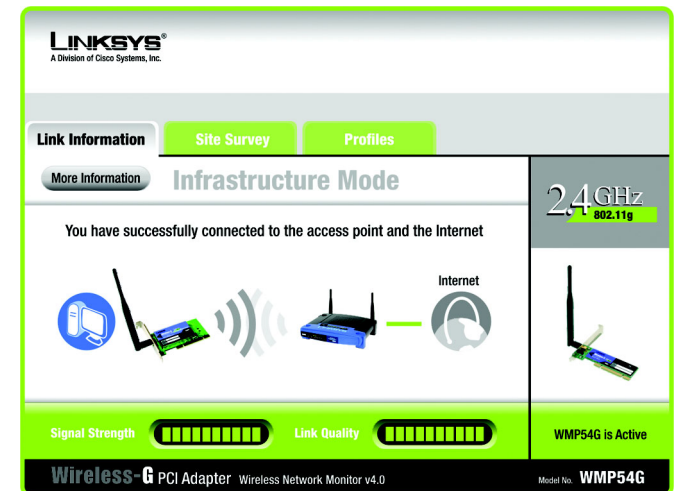


Figure 6-1: The Link Information Tab

Clicking the More Information button displays much more information about the Adapter's connection, as shown below:

Wireless Network Status

Status - This shows the status of the wireless network connection.

SSID - This is the unique name of the wireless network.

Wireless Mode - The mode of the wireless network currently in use is displayed here.

Transfer Rate - The data transfer rate of the current connection is shown here.

Channel - This is the channel to which the wireless network devices are set.

Security - The status of the wireless security feature is shown here.

Authentication - This is your wireless network's authentication method.

IP Address - This shows the Adapter's IP Address.

Subnet Mask - This shows the Adapter's Subnet Mask.

Default Gateway - This is the Adapter's Default Gateway address.

DNS - The DNS address of the Adapter is displayed here.

DHCP Client - This displays the status of the DHCP client.

MAC - This is the MAC Address of the Access Point, Wireless Router, or other device with which the Adapter is currently communicating.

Signal Strength - The Signal Strength bar indicates the signal strength.

Link Quality - The Link Quality bar indicates the quality of the wireless network connection.

Click the **Statistic** button for more information about your wireless connection. Click the **Back** button to return to the initial *Link Information* tab. Clicking the **Save to Profile** button save the currently active connection to a profile. Click the X (Close) button in the upper right corner to exit the Wireless Network Monitor.

Clicking the Statistics button brings up the following information on your wireless connection:

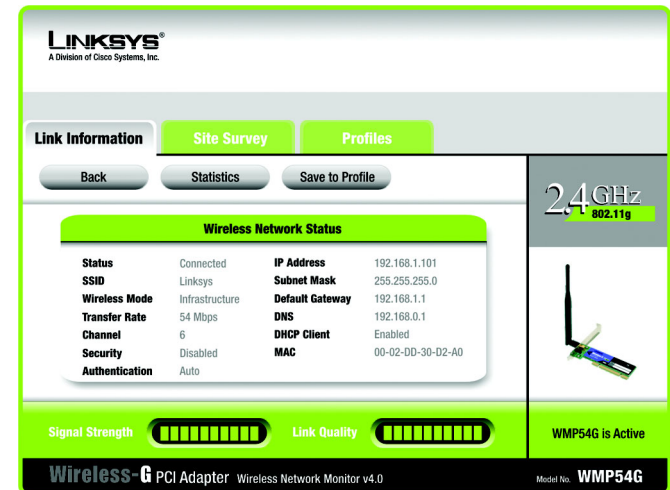


Figure 6-2: The Link Information Tab - More Information

TCP/IP: a set of instructions PCs use to communicate over a network.

IP address: the address used to identify a computer or device on a network

subnet mask: an address code that determines the size of a network

default gateway: a device that forwards Internet traffic from your local area network

DNS: the IP address of your ISP's server, which translates the names of websites into IP addresses.

DHCP: a protocol that lets one device on a local network, known as a DHCP server, assign temporary IP addresses to the other network devices, typically computers.

Transmit Rate - This shows the speed, in megabits per second, at which data is transmitted from the Adapter.

Receive Rate - This shows the speed, in megabits per second, at which data is received by the Adapter.

Packets Received - This shows the packets received by the Adapter, in real time, since connecting to the Wireless Network or since the *Refresh* button was last pressed.

Packets Transmitted - This shows the packets transmitted from the Adapter, in real time, since connecting to the Wireless Network or since the *Refresh* button was last pressed.

Bytes Received - This shows the bytes received by the Adapter, in real time, since connecting to the Wireless Network or since the *Refresh* button was last pressed.

Bytes Transmitted - This shows the bytes transmitted from the Adapter, in real time, since connecting to the Wireless Network or since the *Refresh* button was last pressed.

Noise Level - This shows the level of background noise affecting the wireless signal. A lower reading translates into a higher quality signal.

Signal Strength - This is the intensity of the wireless signal received by the card.

Up Time - This shows the period of the most recent connection to a wireless network.

Total Up Time - This shows the cumulative total of connection time with the Adapter.

Driver Version - This shows the version of the Adapter's driver.

Signal Strength - The Signal Strength bar indicates the signal strength.

Link Quality - The Link Quality bar indicates the quality of the wireless network connection.

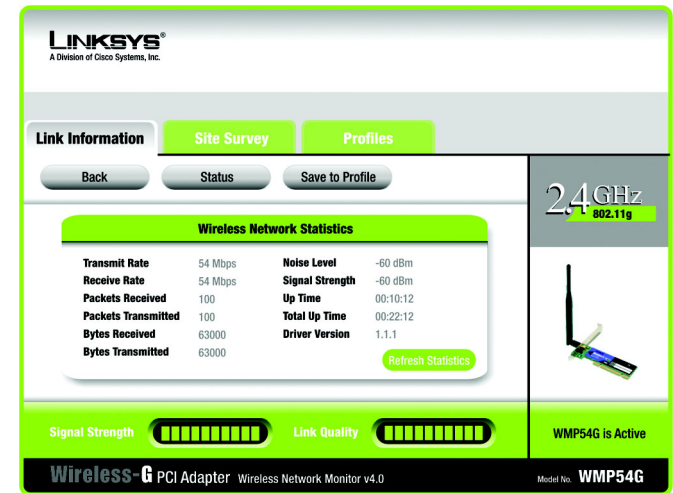


Figure 6-3: The Link Information Tab - Statistics

packet: a unit of data sent over a network

byte: a unit of data that is usually eight bits long

Click the **Back** button to return to the initial *Link Information* tab. Click the **Status** button to return to the first screen of information about your wireless connection. Clicking the **Save to Profile** button save the currently active connection to a profile. Click the **X** (Close) button in the upper right corner to exit the Wireless Network Monitor.

The Site Survey Tab

The Site Survey tab displays available networks and allows you to connect to them. The information about these networks are displayed as below:

SSID - The SSID or unique name of the wireless network.

CH - The channel upon which the network broadcasts.

Signal - The percentage of signal strength, from 0 to 100%.

Site Information

SSID - The SSID or unique name of the wireless network.

Wireless Mode - The mode of the wireless network currently in use.

Channel - The channel to which the wireless network devices are set.

Security - The status of the wireless security feature.

MAC - The MAC address of the wireless network's access point.

Refresh - Click the **Refresh** button to perform a new search for wireless devices.

Connect - To connect to one of the networks on the list, select the wireless network (by SSID), and click the **Connect** button. If the wireless network has WEP encryption enabled, you will need to configure WEP encryption with that network.

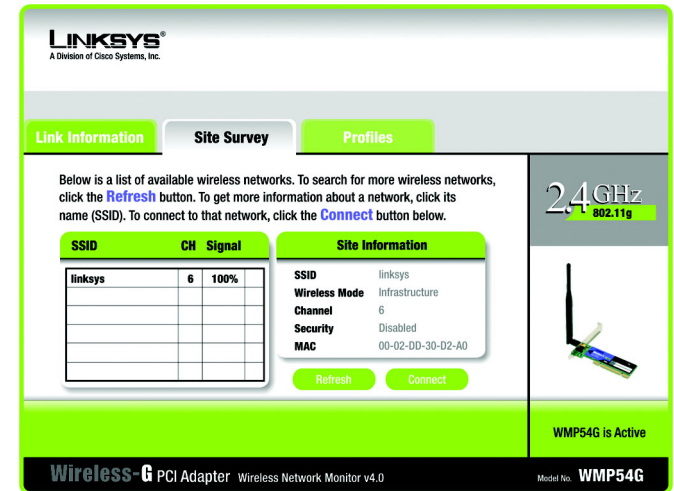


Figure 6-4: The Site Survey Tab

The Profiles Tab

The Profiles screen lets you save different configuration profiles for different network setups. You can also import or export profiles. The default profile holds the initial configuration saved when you ran the Setup Wizard.

Profile - Name of the connection profile.

SSID - The wireless network's unique name, as set in the connection profile.

Profile Information

Wireless Mode - The mode of the wireless network currently in use.

Transfer Rate - The data transfer rate of the current connection. (In Auto mode, the Adapter dynamically shifts to the fastest data transfer rate possible at any given time.)

Channel - The channel to which the wireless network devices are set.

Security - The status of the wireless security feature.

Authentication - The authentication setting for the network.

Connect - To connect to a wireless network using a specific profile, select the profile, and click the **Connect** button.

New - Click the **New** button to create a new profile. See the next section, "Creating a New Profile," for detailed instructions.

Edit - Select a profile, and click the **Edit** button to change an existing profile.

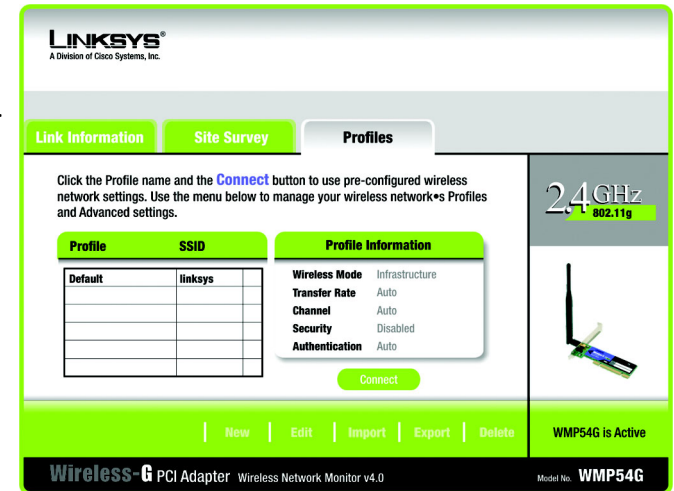


Figure 6-5: The Profiles Tab

Import - Click the **Import** button to import a profile that has been saved in another location. Select the appropriate file and click the **Open** button.

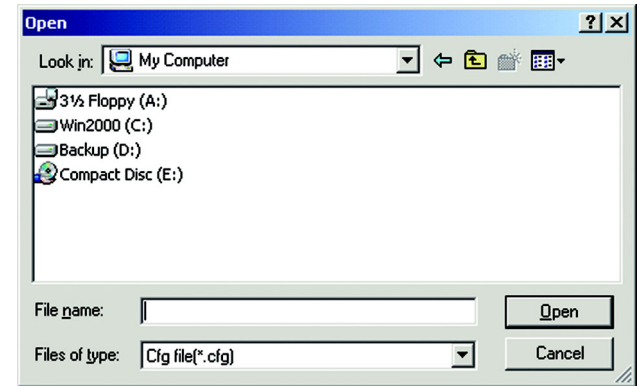


Figure 6-6: Importing a Profile

Export - To save the profile(s) in a different location, click the **Export** button. Direct Windows to the appropriate folder and click the **OK** button.

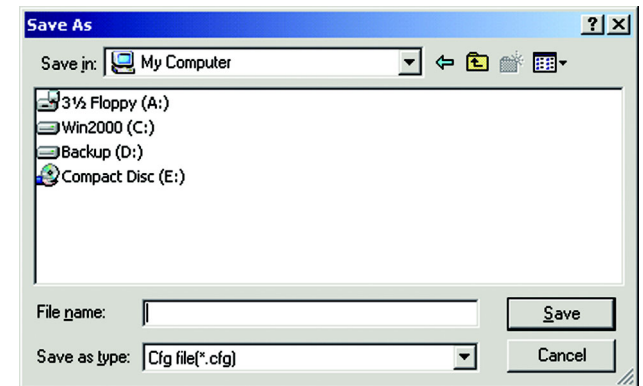


Figure 6-7: Exporting a Profile

Delete - Click the **Delete** button to delete a profile.

Click the **X** (Close) button in the upper right corner to exit the Wireless Network Monitor.

Creating a New Profile

1. On the *Profiles* tab, click the **New** button to create a new profile.

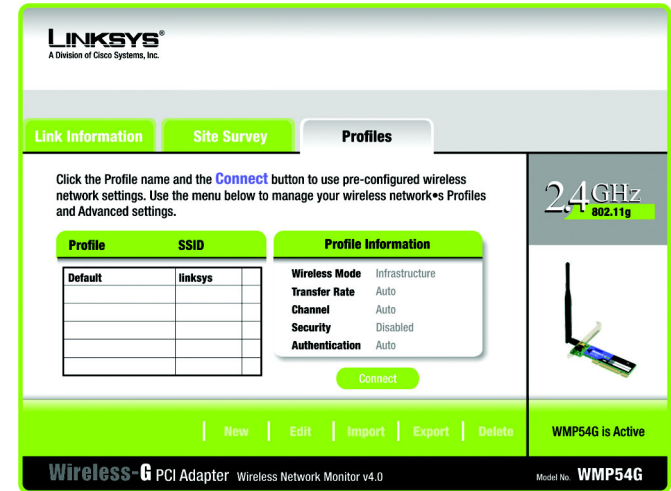


Figure 6-8: The Profiles Tab

2. When the Create connection profile screen appears, enter a name for the new profile. Click **OK** to save the profile name or click **Cancel** to return to the previous screen.



Figure 6-9: Create Connection Profile

3. Enter your network's settings on the **Network Settings** screen, which appears next.

If your network has a DHCP server (or Router), click the radio button next to **Obtain an IP address automatically (DHCP)** and click the **Next** button to continue.

If your network does not have a DHCP server (or router), click the radio button next to **Specify the IP address**. Enter an **IP Address**, **Subnet Mask**, **Default Gateway**, and **DNS** appropriate for your network. Enter each address in this format: xxx.xxx.xxx.xxx (the x's represent the numbers that make up each address). You must specify the IP Address and Subnet Mask on this screen. If you are unsure about the Default Gateway and DNS addresses, then leave these fields alone.

IP Address - This IP Address must be unique to your network.

Subnet Mask - The Adapter's Subnet Mask must be the same as your wired network's Subnet Mask.

Default Gateway - Enter the IP address of your network's Gateway here.

DNS - Enter the DNS addresses of your network here.

Click the **Next** button to continue or the **Cancel** button to return to the previous screen.

Figure 6-10: Profiles - Network Settings

4. The **Wireless Mode** screen shows a choice of two wireless modes. Click the **Infrastructure Mode** radio button if you want your wireless computers to communicate with computers on your wired network via a wireless access point, and continue to Step 6. Click the **Ad-Hoc Mode** radio button if you want multiple wireless computers to communicate directly with each other. Click the **Next** button to continue or the **Back** button to return to the previous screen.

Infrastructure Mode - This mode allows wireless and wired networks to communicate through an access point. Continue to Step 6 if selecting this mode.

Ad-Hoc Mode - This mode allows wireless-equipped computers to communicate directly with each other. No access point is used.

SSID - The SSID is the unique name shared among all devices in your wireless network. The SSID must be identical for all devices in the wireless network. It is case-sensitive and must not exceed 32 alphanumeric characters, which can be any keyboard character.

Figure 6-11: Profiles - Wireless Mode

5. The **Ad-Hoc Mode Settings** screen, for those who chose an Ad-hoc network, will appear next. Select the correct operating channel for your network from the Channel drop-down menu. Then, select the Network Mode from the drop-down menu. Click the **Next** button to continue or click the **Back** button to change any settings.

Channel - The channel you choose should match the channel set on the other devices in your wireless network. If you are unsure about which channel to use, select the default channel (Channel 6).

Network Mode - Select Mixed Mode, and both Wireless-G and Wireless-B computers will be allowed on the network, but the speed will be reduced. Select G-Only Mode for maximum speed, but no Wireless-B users will be allowed on the network.

6. The **Security Settings** screen allows you to set the security level for your network. Enable or disable Wired Equivalent Privacy (WEP) encryption for your wireless network. If you enable WEP, enter a Passphrase or WEP key. Click the **Next** button to continue or the **Back** button to return to the previous screen.

WEP - If you do not want to use WEP encryption, choose Disabled. To use WEP encryption (recommended to increase network security), select 64-bit or 128-bit WEP from the drop-down menu, and enter either a Passphrase or WEP key.

Passphrase - Instead of manually entering WEP keys, you can enter a Passphrase, so that a WEP key is automatically generated. It is case-sensitive and should not be longer than 16 alphanumeric characters. This passphrase must match the passphrase of your wireless network and is compatible with other Linksys wireless products only. (If you have any non-Linksys wireless products, enter the WEP key(s) manually on those products.)

WEP Key - This WEP key must match the WEP key of your wireless network. If you are using 64-bit WEP encryption, then the key must consist of exactly ten hexadecimal characters. If you are using 128-bit WEP encryption, then the key must consist of exactly 26 hexadecimal characters. Valid hexadecimal characters are "0" to "9" and "A" to "F".

TX Key - This allows you to access different WEP keys used by different routers or access points in your network. Choose the TX Key used in that network. For instance, if the device uses TX Key 3, use TX Key 3. If you're not using multiple WEP Keys, leave this set at 1.

Authentication - Select the Authentication method used by your network. Open Authentication does not employ WEP keys. Shared Authentication employs WEP encryption. Auto (the default setting) chooses the method of the network to which you're connecting.

The screenshot shows the 'Ad-Hoc Mode Settings' page. At the top, there's a navigation bar with 'Link Information', 'Site Survey', and 'Profiles' tabs. The 'Profiles' tab is selected. Below the tabs, the title 'Ad-Hoc Mode Settings' is displayed. There are two main settings: 'Channel' (set to 6) and 'Network Mode' (set to Mixed Mode). Each setting has a dropdown arrow and a descriptive text block explaining the options. At the bottom right, there are 'Back' and 'Next' buttons. The footer of the page includes 'Wireless-G PCI Adapter Wireless Network Monitor v4.0' and 'Model No. WMP54G'.

Figure 6-12: Profiles - Ad-Hoc Settings

The screenshot shows the 'Wireless Security' page. It has the same navigation bar as Figure 6-12. The 'Profiles' tab is selected. The title is 'Wireless Security'. There are several settings: 'WEP' (set to Disabled), 'Passphrase' (empty text field), 'WEP Key' (empty text field), and 'For Advanced Users' section with 'TX Key' (set to 1) and 'Authentication' (set to Auto). Each setting has a dropdown arrow and explanatory text. At the bottom right, there are 'Back' and 'Next' buttons. The footer is identical to Figure 6-12.

Figure 6-13: Profiles - Security Settings

7. The **Confirm New Settings** screen will appear. To save the new settings, click the **Save** button. To cancel the settings and return to the Profiles screen, click the **Exit** button. To edit the new settings, click the **Back** button.

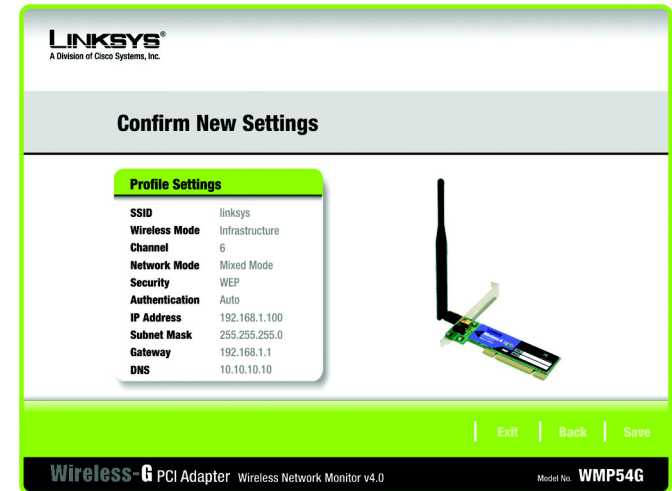


Figure 6-14: Profiles - Confirm New Settings

8. The Congratulations screen shows that the new Profile has successfully been configured. Click **Connect to Network** to implement the new settings immediately and return to the Link Information screen. Click **Return to Profiles Screen** to keep the current settings active, and return to the Profiles screen so that you can edit your profile or create another profile.

You have successfully created a connection profile. Click the **X** (Close) button in the upper right corner to exit the Wireless Network Monitor.



Figure 6-15: Profiles - Congratulations