

USB Mass Storage Device Connection

While the DP-600 does not come with a hard drive for storing your home videos, music or photos, the DP-600 does support external USB mass storage devices like hard drives, USB memory sticks and certain card readers. To connect such a device, simply remove the cover in the lower right part of your player's front panel. Behind the cover you will find an USB port. There is also an USB port on the back of your player. See the Chapter "Overview of the Player" if you are unsure where these ports are. Connect your device to either one of these ports.



Once you have connected your device properly, you can access the files on your device by pressing the MENU button of your remote control to enter the Player menu. Go to the USB section select the type of content you would like to browse.

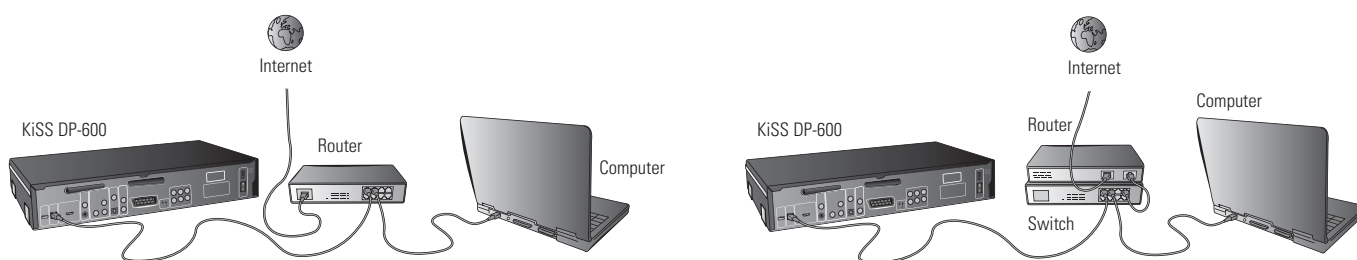
Note: The DP-600 supports the following file systems on mass storage devices: FAT16, FAT32 and NTFS. If you do not know which file system your mass storage device is using, please consult the User Guide for the device or contact the manufacturer for this information. Please also note that the DP-600 only supports mass storage devices in "read only" mode. This means that you cannot rename, delete or in any other way alter your files on the drive from the DP-600.

5

Connecting your Player to a Network



Ethernet Connection using a router



Equipment required

- A router, with a built-in switch or a separate switch/hub.
- 2 or 3 straight Ethernet cables.
- A Windows PC or a Macintosh with an Ethernet connection.
- KiSS PC-Link Software CD for Windows PC or download KiSS MacLink for Macintosh at www.kiss-technology.com/support under Software.

Step-by-Step Guide

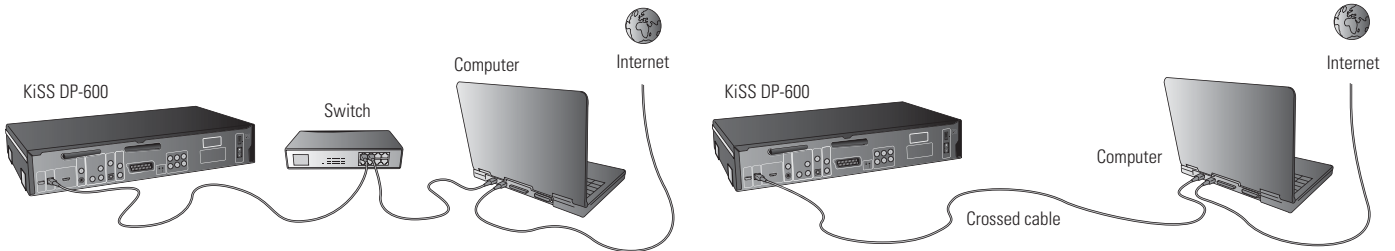
- 1 Connect the player to the router's built-in switch or an external switch/hub which is connected to the router.
- 2 Connect the Computer to the router's built-in switch or an external switch which is connected to the router.
- 3 Check that your Internet connection is working. If any problems occur, contact your ISP (Internet Service provider).

- 4 Install KiSS PC-Link on the PC or KiSS MacLink on the Mac and select the content to be shared with your player.
Check in the KiSS PC-Link info tab that the right card has been chosen.
- 5 Start the player, press SETUP on your remote and go to NETWORK SETTINGS. Check that WIRED is selected under NETWORK INTERFACE and that AUTOMATIC CONFIGURATION (DHCP) is ENABLED. Press SETUP to exit this menu.
- 6 Press MENU and go to PC-LINK.
- 7 Press SELECT HOST, the name of the server should appear on your screen, press OK to select it.
- 8 Choose between AUDIO FILES, VIDEO FILES or PICTURE FILES. The player will display the list of files available from your Computer.
- 9 If you have any problems please check the FAQ on our web site for any questions. If that doesn't help then contact the KiSS Hotline

Your player should now be connected.



Ethernet Network with a Computer using Internet connection sharing



Equipment required

- Switch/hub and 2 straight cables or a crossed cable.
- A Windows PC or a Macintosh with an Ethernet connection.
- KiSS PC-Link Software CD for Windows PC or download KiSS MacLink for Macintosh at www.kiss-technology.com/support under Software.

Step-by-Step Guide

- 1 Connect the player to the Computer with a crossed cable or to a switch/hub.
- 2 Connect the Computer to the Internet (LAN/Modem/ADSL).
- 3 Check that your Internet connection is working. If any problems occur, contact your ISP (Internet Service provider)
- 4a On the Windows PC select Network Connection in Control Panel. Open Properties for the network connection that is connected to the Internet.
Select Advanced where you enable Internet connection sharing.
- 4b On the Macintosh, go to System Preferences, select Sharing. Under sharing choose the Internet tab and click Start to enable Internet Connection Sharing.
- 5 Install KiSS PC-Link on the Windows PC or KiSS MacLink on the Mac and select the content to be shared with your player.
Check in the KiSS PC-Link info tab that the right card has been chosen.
- 6 Start the player, press SETUP on your remote and go to NETWORK SETTINGS. Check that WIRED is selected under NETWORK INTERFACE and that AUTOMATIC CONFIGURATION (DHCP) is ENABLED. Press SETUP to exit this menu.
- 7 Press MENU and go to PC-LINK.
- 8 Press SELECT HOST, the name of the server should appear on your screen, press OK to select it.
- 9 Choose between AUDIO FILES, VIDEO FILES or PICTURE FILES. The player will display the list of files available from your Computer.
- 10 If you have any problems, please check the FAQ on our web site for any questions. And if that doesn't help then contact the KiSS Hotline

Your player should now be connected.



Ethernet Network using a direct Internet connection



Equipment required

- One straight or crossed cable.

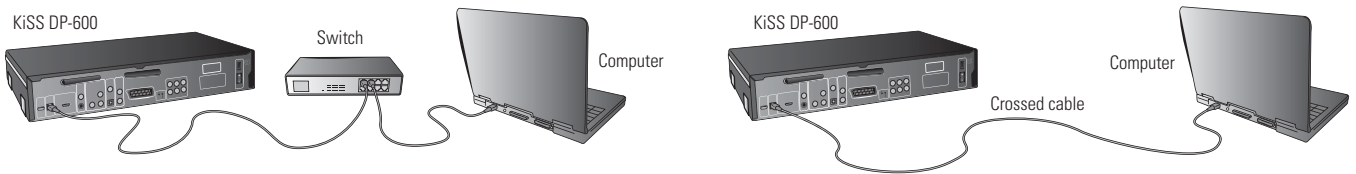
Step-by-Step Guide

- 1 With a direct Internet connection, you can only access the online features such as WebRadio. **KiSS PC-Link or KiSS MacLink can NOT be enabled.**
- 2 Start the player, press SETUP on your remote and go to NETWORK SETTINGS. Check that WIRED is selected under NETWORK INTERFACE and that AUTOMATIC CONFIGURATION (DHCP) is ENABLED. Press SETUP to exit this menu.
- 3 Press SETUP to exit this menu.
- 4 Press KiSS ONLINE on your remote to select the service you wish to use.
- 5 If you have any problems please check the FAQ on our web site for any questions, and if that doesn't help then contact the KiSS Hotline.

Your player should now be connected.



Ethernet Network using a direct connection to the Computer



Equipment required

- Switch/hub and 2 straight cables or a crossed cable.
- A Windows PC or a Macintosh with an Ethernet connection.
- KiSS PC-Link Software CD for Windows PC or download KiSS MacLink for Macintosh at www.kiss-technology.com/support under Software.

Step-by-Step Guide

- 1 Connect the player to the Computer with a crossed cable or to a switch connected to the PC.
- 2a On the PC select Network Connection in the Control Panel. Open Properties for the network connection that is connected to the Player. Select Properties for the Internet Protocol (TCP/IP). Select "Use the following IP address".
- 2b On the Macintosh go to System preferences and select Network. Click on Configure, go under the TCP/IP Pane. Under Configure IPv4 select Manually.
- 3 Enter the IP address below:
IP address 192.168.0.1
Subnet mask 255.255.255.0
- 4 Start the player, press SETUP on your remote and go to NETWORK SETTINGS. Check that WIRED is selected under NETWORK INTERFACE and that AUTOMATIC CONFIGURATION (DHCP) is DISABLED.
- 5 Go to NETWORK CONFIGURATION
- 6 Then enter the following addresses:
IP: 192.168.0.0.0; SUBNET: 255.255.255.0; GATEWAY: 192.168.0.0.1; DNS: 192.168.0.0.1; ALT. DNS: 0.0.0.0
- 7 Press OK to exit this menu. Then MENU and go to PC-LINK.
- 8 Press SELECT HOST, the name of the server should appear on your screen, press OK to select it.
- 9 Choose between AUDIO FILES, VIDEO FILES or PICTURE FILES. The player will display the list of files available from your Computer.
- 10 If you have any problems, please check the FAQ on our web site for any questions. If you cannot find the answers then contact the KiSS Hotline.

Your player should now be connected.



Setting up a Wireless Network

Having physically set up your player, you will need to configure your wireless network in the player Setup menu to be able to communicate with the rest of your network. To do this, please press the SETUP button to enter the Setup menu, select the network tab in the menu and change the settings according to the procedure described below:

Network Interface: Select "Wireless" from this menu to acknowledge that you would like to use a wireless network.

Wireless Authentication: The Wireless Authentication menu item allows you to set the type of encryption used on your wireless network. Encryption is used to keep data exchange between your player and the rest of your network scrambled. This is done in order to protect you from exposing of personal or sensitive information to other wireless users in the vicinity. For the player to be able to communicate with your wireless network, the encryption will need to be set to exactly the same in the player as on the wireless router or access point you will be connecting to. If the wireless router/access point is running with no encryption, your player should be set accordingly. However, KiSS recommends that you always use encryption on your wireless network, so if possible please have your router set to WEP encryption and enable WEP encryption on your player accordingly. If you do not know what type of encryption is enabled (if any) in your wireless router/access point, please refer to its manual on how to see or set it up.

Note: The KiSS DP-600 does not yet support WPA encryption.

Encryption Key: If you are running an encrypted wireless network, all devices on your network will need to share the same encryption key in order for them to communicate. Please enter this menu item to bring up the on-screen keyboard where you will be able to enter the key you are currently using in your wireless router/access point. If you do not know which encryption key is used on your wireless router/access point, please refer to its manual for information on how to see it or set it up.

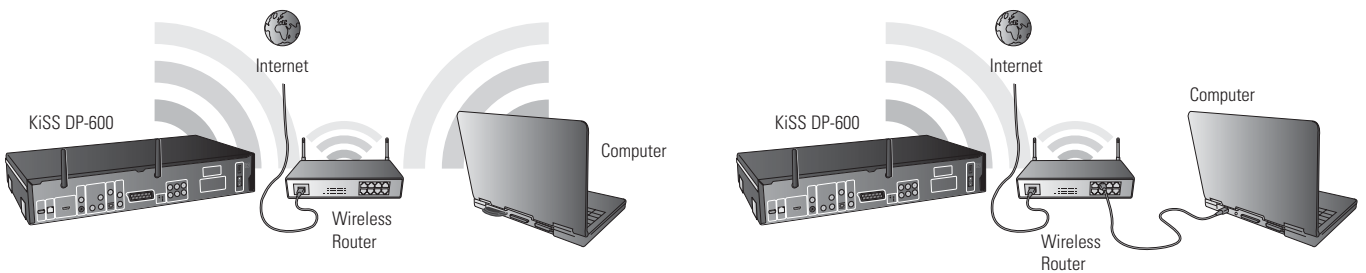


Possible errors.

- Cable problem, check that there is light in all the ports of the switch/hub
- There is a firewall installed on the Computer which blocks the ports used by KiSS PC-Link or KiSS MacLink (port 8000 must be open)
- The player and the Computer are not on the same Subnet (problem with playing video)
- Your Computer has been assigned a new IP address from the DHCP server. It may differ from the one entered in the player. (Using a static IP on the Computer will counter this) - KiSS PC-Link or KiSS MacLink have to be running for the player to access the data



Wireless Connection using a router or an access point



Equipment required

- A wireless router with a built-in switch or an access point or a separate switch/hub.
- A Windows PC or a Macintosh with a wireless card. The Computer can also be connected to the wireless router via Ethernet (wired).
- KiSS PC-Link Software CD for Windows PC or download KiSS MacLink for Macintosh at www.kiss-technology.com/support under Software.

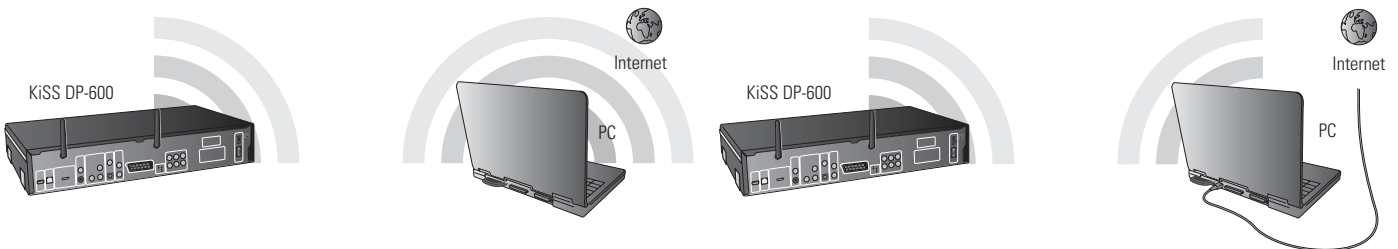
Step-by-Step Guide

- 1 Connect the Computer to the router's built-in switch or an external switch which is connected to the router (Only for Ethernet wired connections to the Computer).
- 2 Check that your Internet connection is working. If any problems occur, contact your ISP (Internet Service provider).
- 3 Install KiSS PC-Link on the Windows PC or KiSS MacLink on the mac and select the content to be shared with your player.
Check in the KiSS PC-Link info tab that the right card has been chosen.
- 4 Start the player, press SETUP on your remote and go to NETWORK SETTINGS. Check that WIRELESS is selected under NETWORK INTERFACE and that AUTOMATIC CONFIGURATION (DHCP) IS ENABLED. Configure your wireless connection following the "Setting up a Wireless Network" instruction on the previous page.
When done, press SETUP to exit this menu.
- 5 Press MENU and go to PC-LINK.
- 6 Press SELECT HOST, the name of the server should appear on your screen, press OK to select it.
- 7 Choose between AUDIO FILES, VIDEO FILES or PICTURE FILES. The player will display the list of files available from your Computer.
- 8 If you have any problems please check the FAQ on our web site for any questions If that doesn't help then contact the KiSS Hotline.

Your player should now be connected.



Wireless Network with a Computer using Internet connection sharing



Equipment required

- A Windows PC or a Macintosh with a wireless card. The Computer can also be connected to the wireless router via Ethernet (wired).
- KiSS PC-Link Software CD for Windows PC or download KiSS MacLink for Macintosh at www.kiss-technology.com/support under Software.

Step-by-Step Guide

- 1 Connect the PC to the Internet (LAN/Modem/ADSL). This can be done wirelessly or wired.
- 2 Check that your Internet connection is working. If any problems occur, contact your ISP (Internet Service provider)
- 3a On the Windows PC select Network Connection in Control Panel. Open Properties for the network connection that is connected to the Internet.
Select Advanced where you enable Internet connection sharing.
- 3b On the Macintosh, go to System Preferences, select Sharing. Under sharing choose the Internet tab and click Start to enable Internet Connection Sharing.
- 4 Install KiSS PC-Link on the Windows PC or KiSS MacLink on the Mac and select the content to be shared with your player.
Check in the KiSS PC-Link info tab that the right card has been chosen.
- 5 Start the player, press SETUP on your remote and go to NETWORK SETTINGS. Check that WIRELESS is selected under NETWORK INTERFACE and that AUTOMATIC CONFIGURATION (DHCP) IS ENABLED. Configure your wireless connection following the "Setting up a Wireless Network" instruction on the previous page.
When done, press SETUP to exit this menu.
- 6 Press MENU and go to PC-LINK.
- 7 Press SELECT HOST, the name of the server should appear on your screen, press OK to select it.
- 8 Choose between AUDIO FILES, VIDEO FILES or PICTURE FILES. The player will display the list of files available from your Computer.
- 9 If you have any problems please check the FAQ on our web site for any questions If that doesn't help then contact the KiSS Hotline

Your player should now be connected.



Possible errors.

- Cable problem, check that there is light in all the ports of the switch/hub
- There is a firewall installed on the Computer which blocks the ports used by KiSS PC-Link or KiSS MacLink (port 8000 must be open)
- The player and the Computer are not on the same Subnet (problem with playing video)
- Your Computer has been assigned a new IP address from the DHCP server. It may differ from the one entered in the player. (Using a static IP on the Computer will counter this) - KiSS PC-Link or KiSS MacLink have to be running for the player to access the data



Wireless Network using a direct Internet connection



Equipment required

- A wireless ADSL modem.

Step-by-Step Guide

- 1 With a direct Internet connection, you can only access the online features such as WebRadio. **KiSS PC-Link or KiSS MacLink can NOT be enabled.**
- 2 Start the player, press SETUP on your remote and go to NETWORK SETTINGS. Check that WIRELESS is selected under NETWORK INTERFACE and that AUTOMATIC CONFIGURATION (DHCP) is ENABLED. Configure your wireless connection following the "Setting up a Wireless Network" instruction on the previous page. When done, press SETUP to exit this menu.
- 4 Press ONLINE on your remote to select the service you wish to use.
- 5 If you have any problems please check the FAQ on our web site for any questions, and if that doesn't help then contact the KiSS Hotline.

Your player should now be connected.



Wireless Network using a direct connection to the Computer (ad-hoc)



This service is not yet available, but will be in a future firmware release

Equipment required

- A Windows PC or a Macintosh with a wireless card. The Computer can also be connected to the wireless router via Ethernet (wired).
- KiSS PC-Link Software CD for Windows PC or download KiSS MacLink for Macintosh at www.kiss-technology.com/support under Software.

Step-by-Step Guide

- 1a On the PC select Network Connection in the Control Panel. Open Properties for the network connection that is connected to the Player. Select Properties for the Internet Protocol (TCP/IP). Select "Use the following IP address".
- 1b On the Macintosh go to System preferences and select Network. Click on Configure, go under the TCP/IP Pane. Under Configure IPv4 select Manually.
- 2 Enter the IP address below:
IP address 192.168.0.1
Subnet mask 255.255.255.0
- 3 Start the player, press SETUP on your remote and go to NETWORK SETTINGS. Check that WIRELESS is selected under NETWORK INTERFACE and that AUTOMATIC CONFIGURATION (DHCP) is DISABLED.
- 4 Go to NETWORK CONFIGURATION
- 5 Then enter the following addresses:
IP: 192.168.0.0.0; SUBNET: 255.255.255.0; GATEWAY: 192.168.0.0.1; DNS: 192.168.0.0.1; ALT. DNS: 0.0.0.0
- 6 Press OK to exit this menu. Then MENU and go to PC-LINK.
- 7 Press SELECT HOST, the name of the server should appear on your screen, press OK to select it.
- 8 Choose between AUDIO FILES, VIDEO FILES or PICTURE FILES. The player will display the list of files available from your PC.
- 9 If you have any problems, please check the FAQ on our web site for any questions. If that doesn't help then contact the KiSS Hotline.

Your player should now be connected.



Possible errors.

- Cable problem, check that there is light in all the ports of the switch/hub
- There is a firewall installed on the Computer which blocks the ports used by KiSS PC-Link or KiSS MacLink (port 8000 must be open)
- The player and the Computer are not on the same Subnet (problem with playing video)
- Your Computer has been assigned a new IP address from the DHCP server. It may differ from the one entered in the player. (Using a static IP on the Computer will counter this) - KiSS PC-Link or KiSS MacLink have to be running for the player to access the data