

LINKSYS

User Guide

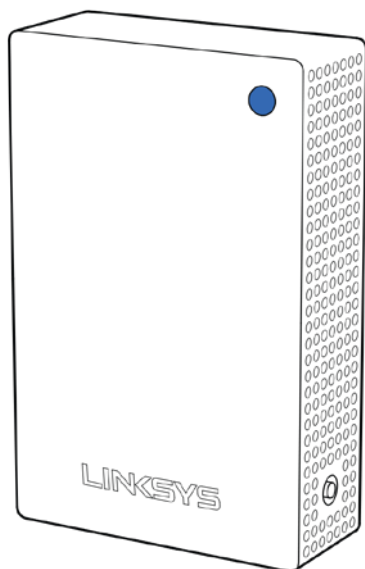
Velop Plug-in

Table of Contents

<i>Product Overview</i>	3
Front	3
Side/Back	4
<i>Set Up</i>	6
<i>How to restore factory defaults</i>	7
<i>Velop System Settings</i>	7
Where to find more help	8
<i>Specifications</i>	9
Linksys Velop Plug-in	9
Environmental	9

Product Overview

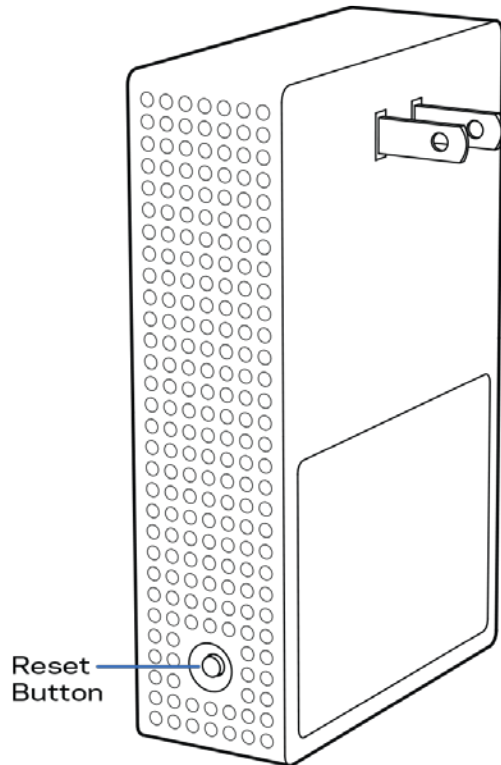
Front



The light on the front of your node gives you information about the node's operation.

Light description	Status
Blue (blinking)	Starting up Wait for the node to finish starting up.
Purple	Ready for setup Open the Linksys app to complete setup.
Purple (blinking)	Setup in progress Follow instructions in the app.
Blue	Connected to internet Node is online, everything is good.
Red	No internet Not online, check with your ISP for service interruptions.
Red (blinking)	Out of range Node isn't in range of another node. Move it closer.
Yellow	Weak connection Your node is connected to the internet, but the signal is weak. Move it closer to another node to improve the signal.

Side/Back

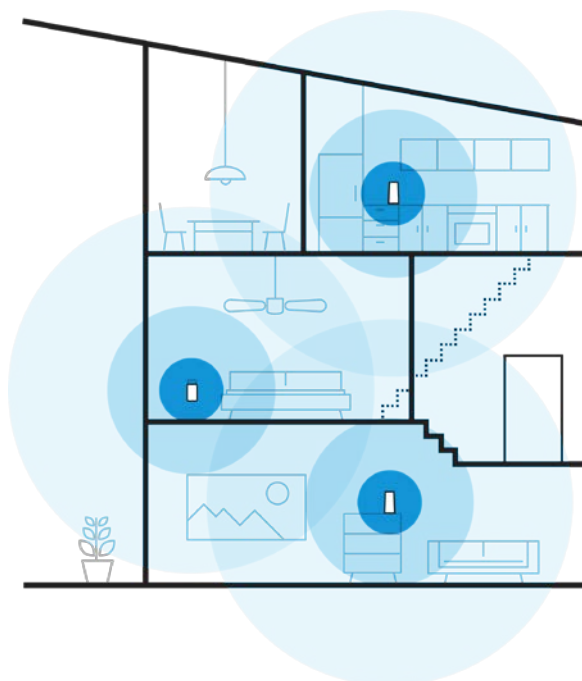


Reset button—Press and hold until the light on front of the node turns red, fades and flashes bright red again to reset the node to its factory defaults.

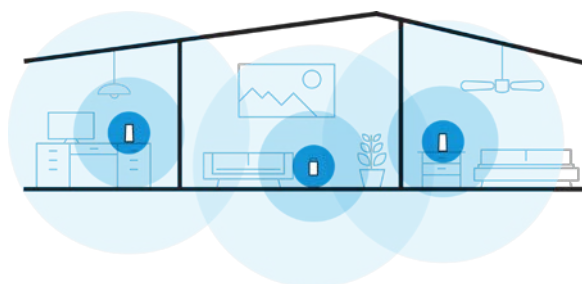
Network of nodes

Every home is unique. Velop creates a modular mesh system of Wi-Fi nodes to provide wireless coverage throughout your home. Whether you have one node, three nodes, or more, we'll help you get them in the right spot - one at a time - for the best performance everywhere.

Velop Plug-in must be used with an existing Velop system and requires a Velop primary node connected to your modem with an ethernet cable.



Sample multi-story home



Sample single-story home

Velop Plug-in is designed for indoor use. Do not use outdoors or other areas where it might be affected by rain or other weather conditions.

Set Up

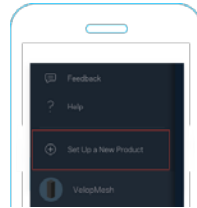
1. Open the Linksys app.



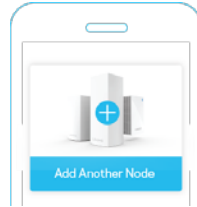
2. Log in



3. Find and tap "Set up a New Product" in the main menu.



4. Select "Add Another Node" and follow setup instructions.

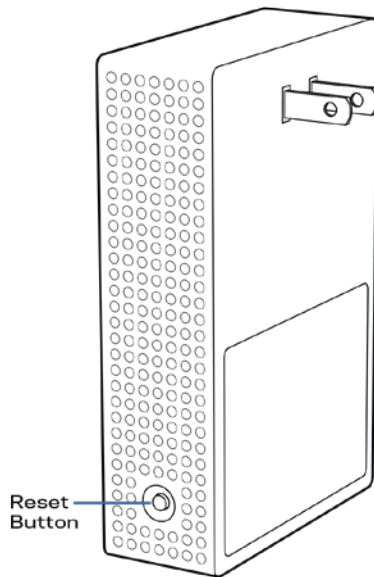


How to restore factory defaults

You should never need to reset your Velop Plug-in to factory default settings—a very disruptive process. A factory reset restores your Velop Plug-in to the state it was when you took it out of its box, requiring you to go through the setup process again.

To reset your Velop Plug-in to factory defaults:

- With your node plugged in, use a press and hold the Reset button on the side. The light on front of the node will turn red and fade in pulses. Do not release the button until the light goes out and then turns bright red.



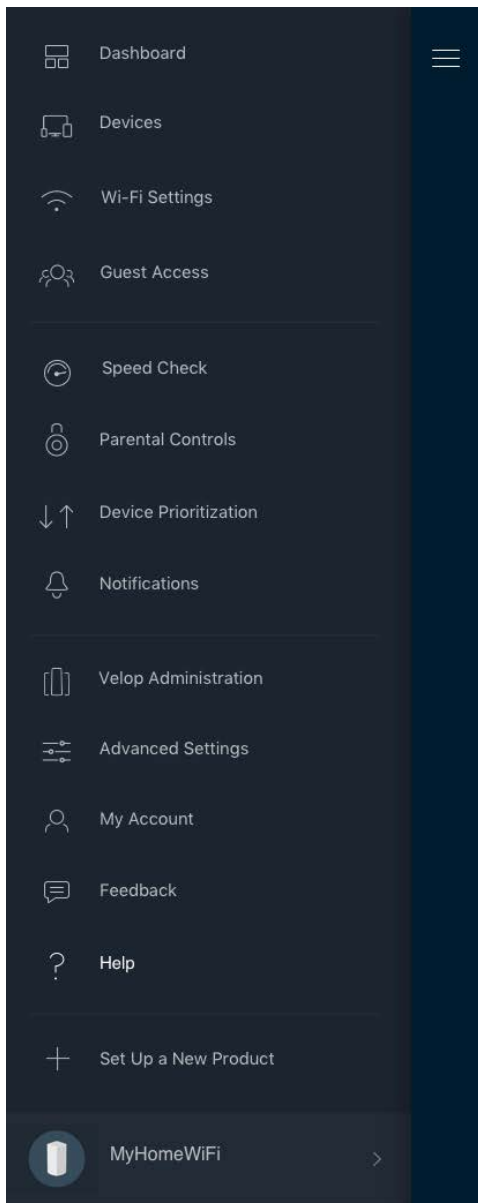
Velop System Settings

Using your Linksys app, you can view or change Velop system settings to make your Wi-Fi more secure or to work better with a device or game. You can access settings from anywhere in the world if you have an internet connection, but you can also access your Velop system directly from your home network if you are not online. To view the Velop user guide, detailing how to use the Linksys app go to linksys.com/support/Velop.

Help

Where to find more help

- Linksys.com/support/Velop
- Linksys app help (launch the app and click *Help* in the main navigation menu)



Note—Licenses and notices for third party software used in this product may be viewed on <http://support.linksys.com/en-us/license>. Please contact <http://support.linksys.com/en-us/gplcodecenter> for questions or GPL source code requests.

Specifications

Linksys Velop Plug-in

Model Name	Velop Plug-in
Model Number	WHW01P
Radio Frequency	2.4 GHz and 5 GHz
# of Antennas	3
Buttons	Reset
Lights	One, multicolored light for power and status
Security Features	WPA2-Personal
Security Key Bits	Up to 128-bit encryption

Environmental

Dimensions	3.05" x 2.1" x 4.7" (77.47 mm x 53.34 mm x 119.38 mm)
Unit Weight	0.57 lb (260 g)
Power	Internal AC/DC power supply: 100-240V ~1A, 50/60 Hz
Certifications	FCC, UL, Wi-Fi (IEEE 802.11a/b/g/n/ac), WPS
Operating Temp.	32° to 104° F (0 to 40° C)
Storage Temp.	-4° to 140° F (-20 to 60° C)
Operating Humidity	10% to 80% relative humidity, non-condensing
Storage Humidity	5% to 90% non-condensing

Notes:

For regulatory, warranty, and safety information, go to Linksys.com/support/Velop.

Specifications are subject to change without notice.

Maximum performance derived from IEEE Standard 802.11 specifications. Actual performance can vary, including lower wireless network capacity, data throughput rate, range and coverage.

Performance depends on many factors, conditions and variables, including distance from the access point, volume of network traffic, building materials and construction, operating system used, mix of wireless products used, interference and other adverse conditions.

Visit linksys.com/support/Velop for award-winning technical support.

BELKIN, LINKSYS and many product names and logos are trademarks of the Belkin group of companies. Third-party trademarks mentioned are the property of their respective owners.

© 2018 Belkin International, Inc. and/or its affiliates. All rights reserved.

LNKPG-00565