


[Home](#) | [Products](#) | [Services](#) | [Projects](#) | [Support](#) | [Seminars and Tutorials](#) | [News](#) | [Contacts](#) | [About](#) | [How To Buy](#) | [Career](#)

Change region:

 [Login](#)[Credit Reference](#)[Products A-Z](#)[New Customers](#)[Advanced Search](#)

List price:

Manuf. Part #

Winncom Part #

USA Prices.

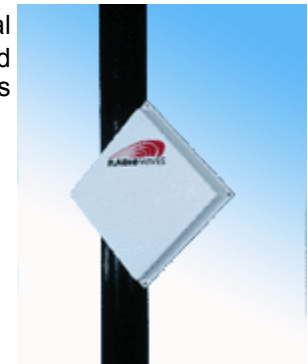
International prices
may vary.Contact our sales office for
reseller and quantity
discounts.
Winncom
Product Catalog [>>>](#)
50% Price
reduced
WRC-8 cable 500 [>>>](#)
New MultiTech
products
Voice gateways [>>>](#)
Proxim
Tsunami MultiPoint
Price Reduction [>>>](#)
Download
SoftJoys
VoIP Software [>>>](#)
State Purchasing
Contracts
Click Here [>>>](#)

\ Antennas \ 5.15 - 5.85 GHz Band \ Directional Antennas

18dBi Flat Panel Antenna Panel, 6" Diameter, 5.1-5.8 GHz Frequency Band, Ideal For Use with MP.11a products

[Email This Page to a Friend](#)[Microwave Link Calculator](#)

This Flat Panel Antenna specially built for point-to-point and point to-multi point terrestrial microwave applications (**Proxim Tsunami MP 11a Product Line**). It's designed to be lightweight, easy to install, aligned and durable for years of reliable service. This antenna is ideal for concealment in many architectural environments.



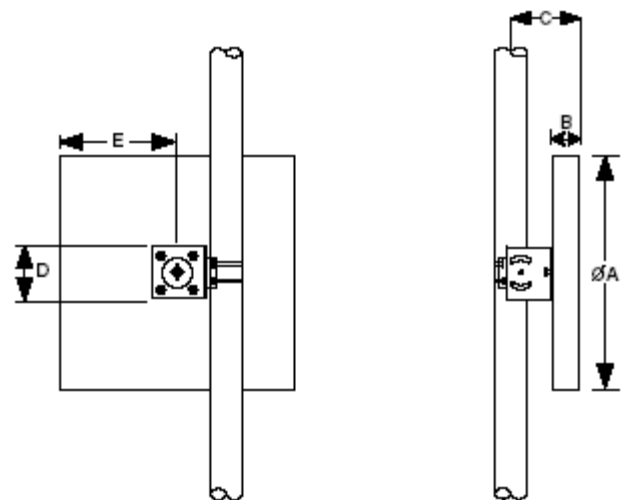
Antenna Features:

- Flat panel design is aesthetically pleasing
- Lightweight and rugged design
- Low windload
- Easily installed
- RF Connector Interface: Type "N" female
- Plane Polarized
- Superior sidelobe performance
- Standard mount accommodates a 1" - 2.5" pipe mast

Electrical Specifications

Frequency, GHz	Polarization	Gain, dBi (nominal)	Beamwidth °, -3dB	X-Pol. Rejection, dB	F/B Ratio, dB	VSWR, Max, (R.L., dB)
5.25 - 5.85	Single	18.0	18	25	30	1.5:1 (14.0)

Dimensions



Top View

Side View

A	B	C	D	E
6.0 (15.2)	0.5 (1.3)	5.0 (12.7)	4.7 (12.0)	3.0 (7.6)

[Home](#) | [Support](#) | [Seminars and Tutorials](#) | [News](#) | [Contacts](#) | [About](#)

Copyright © 2000, 2001, 2002 Winncom Technologies Corp. - ALL RIGHTS RESERVED