

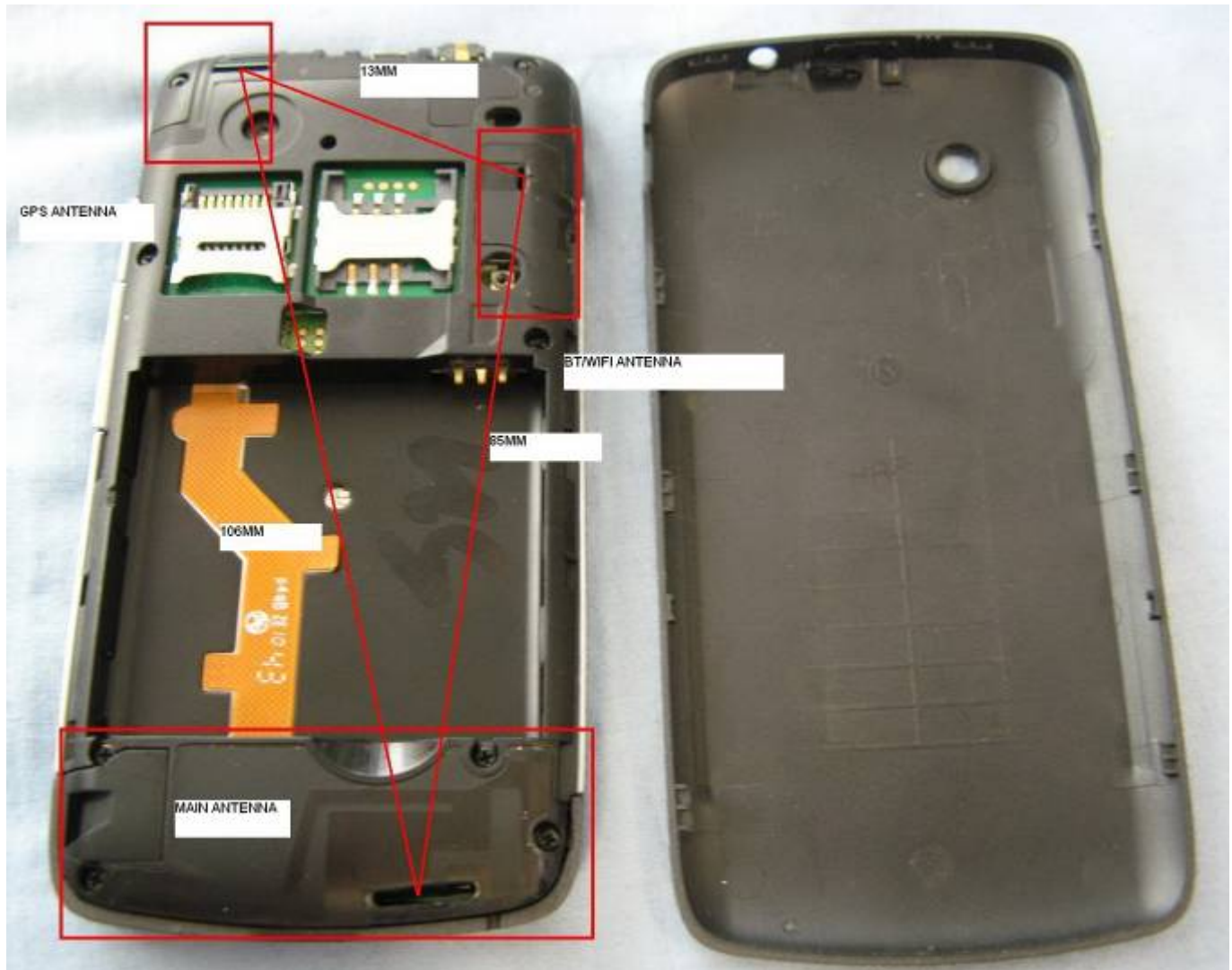
## ANNEX I: The EUT Appearances and Test Configuration



a: EUT

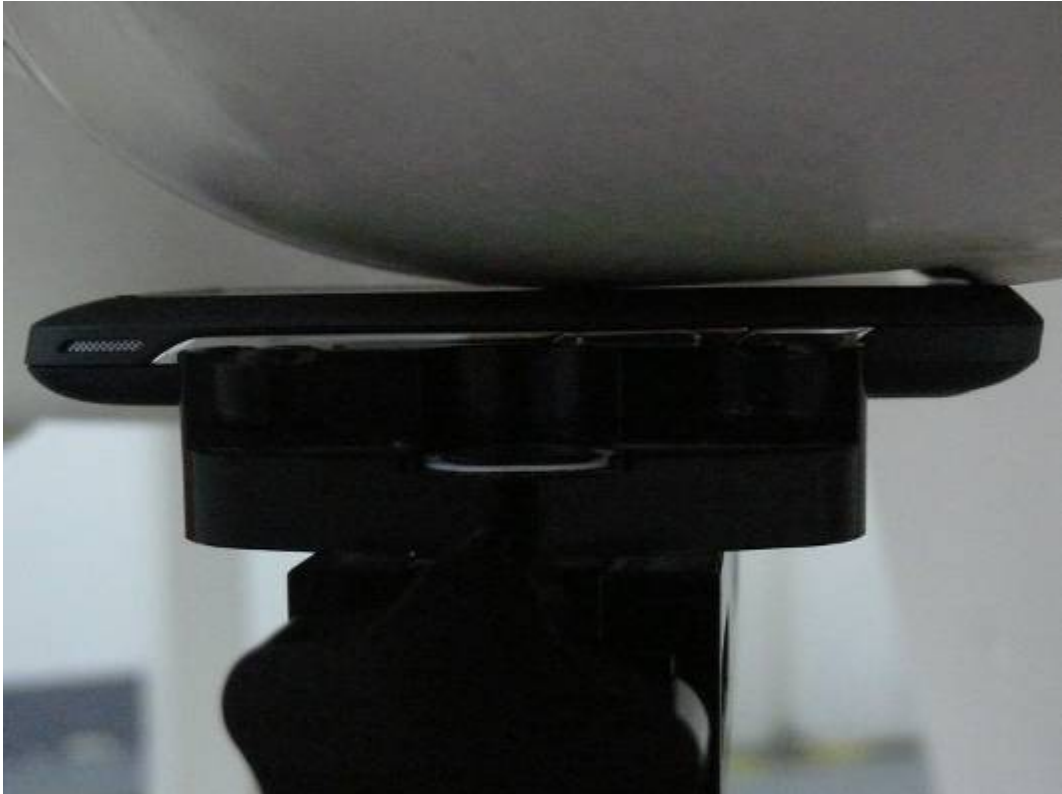


b: Battery



c: Back View

Picture 8: Constituents of EUT



Picture 9: Left Hand Touch Cheek Position



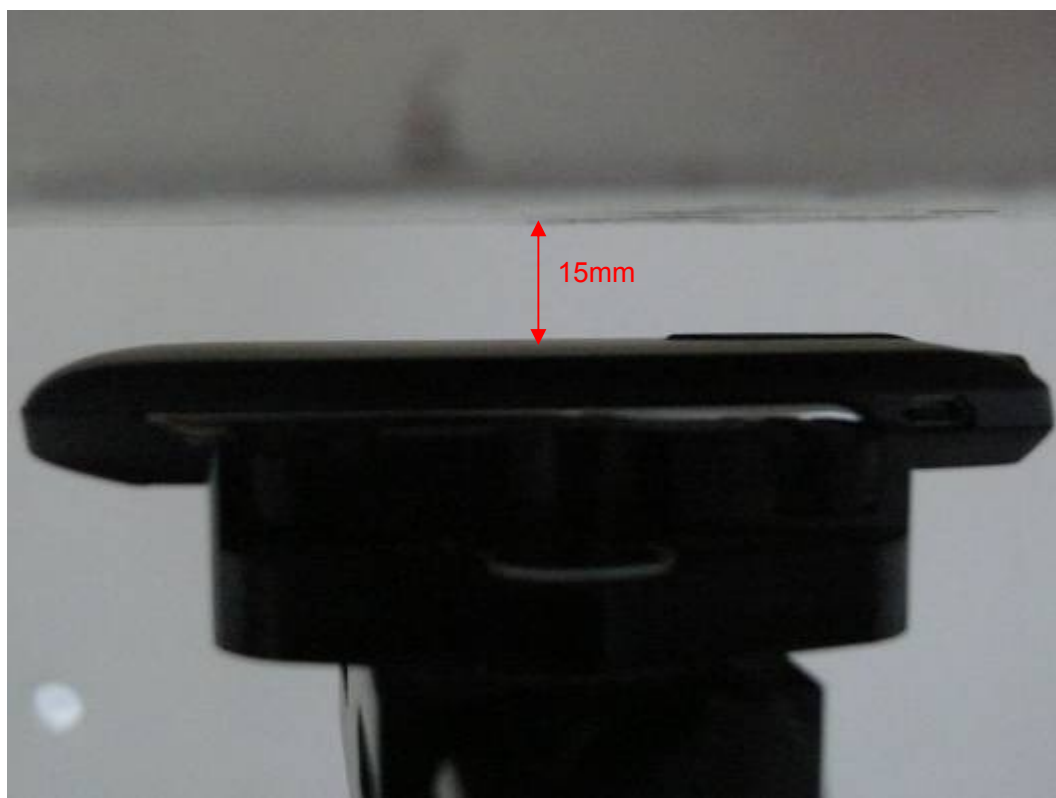
Picture 10: Left Hand Tilt 15 Degree Position



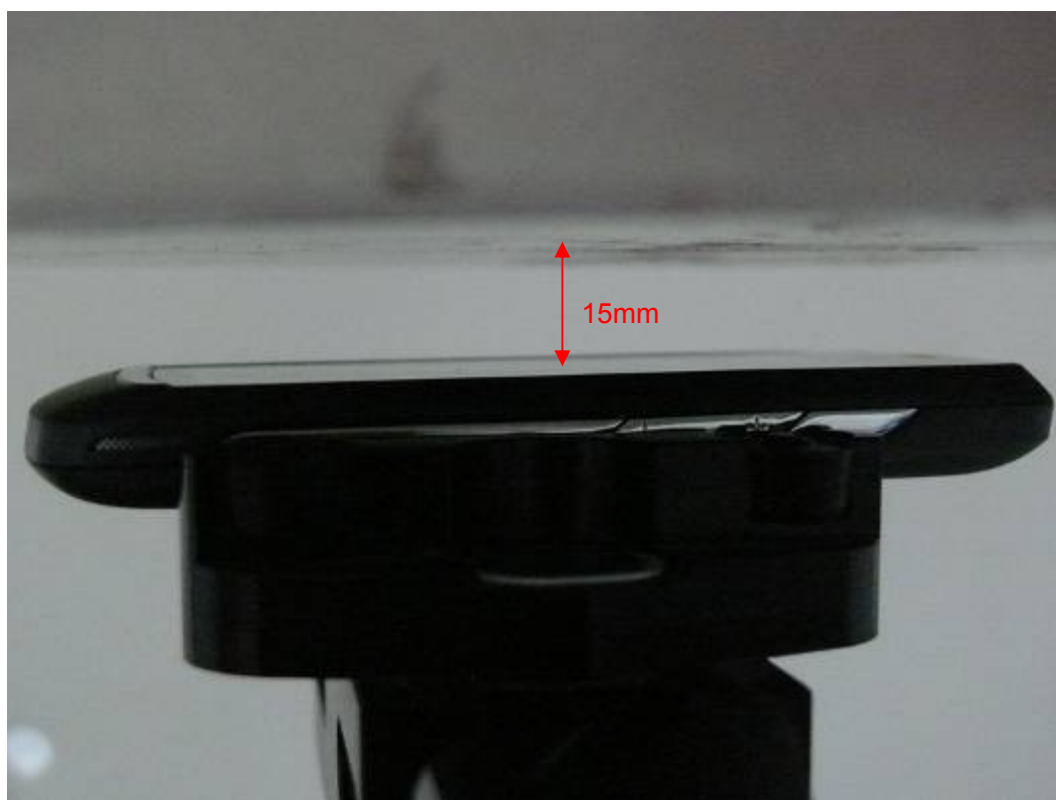
Picture 11: Right Hand Touch Cheek Position



Picture 12: Right Hand Tilt 15 Degree Position

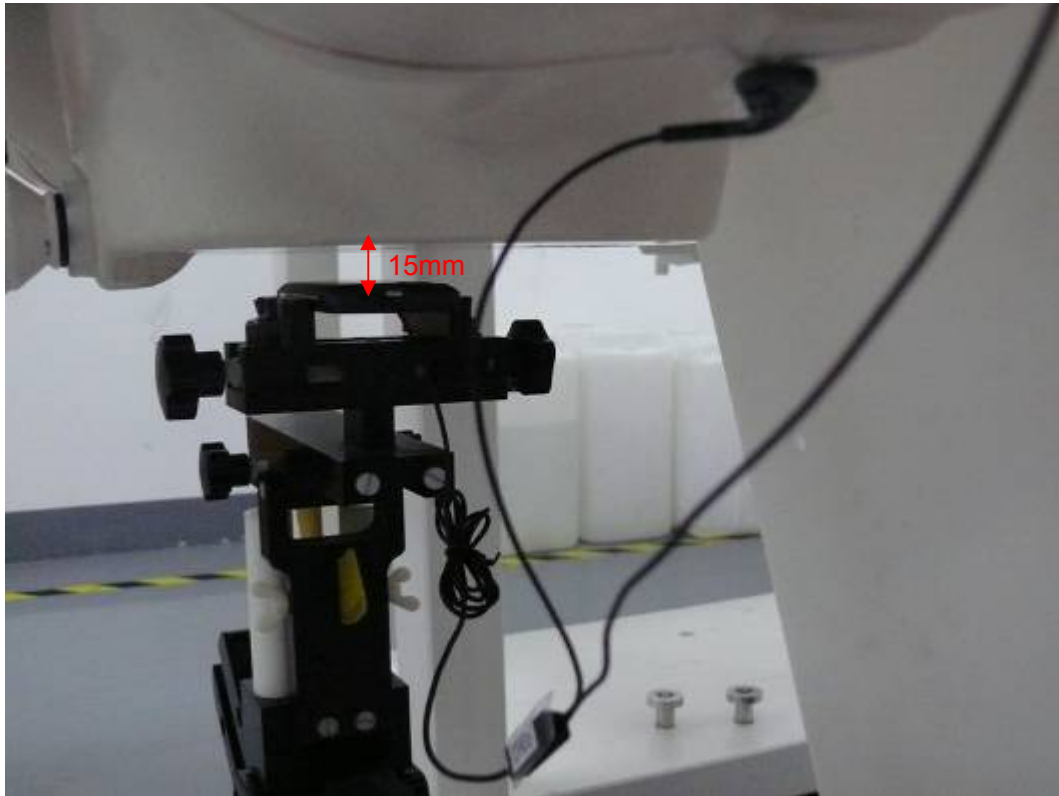


Picture 13: Body, The EUT display towards ground, the distance from handset to the bottom of the Phantom is 15mm



Picture 14: Body, The EUT display towards phantom, the distance from handset to the bottom of the Phantom is 15mm





Picture 15: Body with earphone, The EUT display towards ground, the distance from handset to the bottom of the Phantom is 15mm