

TA Technology (Shanghai) Co., Ltd.
Test Report

No. RZA2008-1075FCC

Page 85 of 92

ANNEX G: DAE4 CALIBRATION CERTIFICATE

**Calibration Laboratory of
Schmid & Partner
Engineering AG**
Zeughausstrasse 43, 8004 Zurich, Switzerland



S Schweizerischer Kalibrierdienst
S Service suisse d'étalonnage
C Servizio svizzero di taratura
S Swiss Calibration Service

Accredited by the Swiss Accreditation Service (SAS)
The Swiss Accreditation Service is one of the signatories to the EA
Multilateral Agreement for the recognition of calibration certificates

Accreditation No.: **SCS 108**

Client **TA (Auden)**

Certificate No: **DAE4-452_Jul08**

CALIBRATION CERTIFICATE

Object **DAE4 - SD 000 D04 BA - SN: 452**

Calibration procedure(s) **QA CAL-06.v12
Calibration procedure for the data acquisition electronics (DAE)**

Calibration date: **July 21, 2008**

Condition of the calibrated item **In Tolerance**

This calibration certificate documents the traceability to national standards, which realize the physical units of measurements (SI).
The measurements and the uncertainties with confidence probability are given on the following pages and are part of the certificate.

All calibrations have been conducted in the closed laboratory facility: environment temperature (22 ± 3)°C and humidity < 70%.

Calibration Equipment used (M&TE critical for calibration)

Primary Standards	ID #	Cal Date (Certificate No.)	Scheduled Calibration
Fluke Process Calibrator Type 702	SN: 6295803	04-Oct-07 (No: 6467)	Oct-08
Keithley Multimeter Type 2001	SN: 0810278	03-Oct-07 (No: 6465)	Oct-08
Secondary Standards	ID #	Check Date (in house)	Scheduled Check
Calibrator Box V1.1	SE UMS 006 AB 1004	06-Jun-08 (in house check)	In house check: Jun-09

Calibrated by:	Name Andrea Guntli	Function Technician	Signature
Approved by:	Name Fin Bomholt	Function R&D Director	Signature

Issued: July 21, 2008

This calibration certificate shall not be reproduced except in full without written approval of the laboratory.

**Calibration Laboratory of
Schmid & Partner
Engineering AG**
Zeughausstrasse 43, 8004 Zurich, Switzerland



S Schweizerischer Kalibrierdienst
C Service suisse d'étalonnage
S Servizio svizzero di taratura
S Swiss Calibration Service

Accredited by the Swiss Accreditation Service (SAS)
The Swiss Accreditation Service is one of the signatories to the EA
Multilateral Agreement for the recognition of calibration certificates

Accreditation No.: **SCS 108**

Glossary

DAE data acquisition electronics
Connector angle information used in DASY system to align probe sensor X to the robot coordinate system.

Methods Applied and Interpretation of Parameters

- **DC Voltage Measurement:** Calibration Factor assessed for use in DASY system by comparison with a calibrated instrument traceable to national standards. The figure given corresponds to the full scale range of the voltmeter in the respective range.
- **Connector angle:** The angle of the connector is assessed measuring the angle mechanically by a tool inserted. Uncertainty is not required.
- The following parameters as documented in the Appendix contain technical information as a result from the performance test and require no uncertainty.
 - **DC Voltage Measurement Linearity:** Verification of the Linearity at +10% and -10% of the nominal calibration voltage. Influence of offset voltage is included in this measurement.
 - **Common mode sensitivity:** Influence of a positive or negative common mode voltage on the differential measurement.
 - **Channel separation:** Influence of a voltage on the neighbor channels not subject to an input voltage.
 - **AD Converter Values with inputs shorted:** Values on the internal AD converter corresponding to zero input voltage
 - **Input Offset Measurement:** Output voltage and statistical results over a large number of zero voltage measurements.
 - **Input Offset Current:** Typical value for information; Maximum channel input offset current, not considering the input resistance.
 - **Input resistance:** DAE input resistance at the connector, during internal auto-zeroing and during measurement.
 - **Low Battery Alarm Voltage:** Typical value for information. Below this voltage, a battery alarm signal is generated.
 - **Power consumption:** Typical value for information. Supply currents in various operating modes.

TA Technology (Shanghai) Co., Ltd.
Test Report

No. RZA2008-1075FCC

Page 87 of 92

DC Voltage Measurement

A/D - Converter Resolution nominal

High Range: 1LSB = 6.1 μ V , full range = -100...+300 mV

Low Range: 1LSB = 61nV , full range = -1.....+3mV

DASY measurement parameters: Auto Zero Time: 3 sec; Measuring time: 3 sec

Calibration Factors	X	Y	Z
High Range	404.675 \pm 0.1% (k=2)	404.426 \pm 0.1% (k=2)	404.582 \pm 0.1% (k=2)
Low Range	3.97902 \pm 0.7% (k=2)	3.97676 \pm 0.7% (k=2)	3.97703 \pm 0.7% (k=2)

Connector Angle

Connector Angle to be used in DASY system	57 $^{\circ}$ \pm 1 $^{\circ}$
---	----------------------------------

TA Technology (Shanghai) Co., Ltd.

Test Report

No. RZA2008-1075FCC

Page 88of 92

Appendix

1. DC Voltage Linearity

High Range	Input (μV)	Reading (μV)	Error (%)
Channel X + Input	200000	199999.6	0.00
Channel X + Input	20000	20010.85	0.05
Channel X - Input	20000	-20007.22	0.04
Channel Y + Input	200000	199999.7	0.00
Channel Y + Input	20000	20004.64	0.02
Channel Y - Input	20000	-20007.87	0.04
Channel Z + Input	200000	199999.9	0.00
Channel Z + Input	20000	20006.37	0.03
Channel Z - Input	20000	-20004.56	0.02

Low Range	Input (μV)	Reading (μV)	Error (%)
Channel X + Input	2000	2000.1	0.00
Channel X + Input	200	200.31	0.16
Channel X - Input	200	-200.05	0.03
Channel Y + Input	2000	2000.1	0.00
Channel Y + Input	200	200.32	0.16
Channel Y - Input	200	-201.77	0.89
Channel Z + Input	2000	1999.9	0.00
Channel Z + Input	200	199.01	-0.50
Channel Z - Input	200	-201.29	0.64

2. Common mode sensitivity

DASY measurement parameters: Auto Zero Time: 3 sec; Measuring time: 3 sec

	Common mode Input Voltage (mV)	High Range Average Reading (μV)	Low Range Average Reading (μV)
Channel X	200	4.04	3.25
	- 200	-2.86	-3.04
Channel Y	200	-8.82	-8.52
	- 200	6.51	7.21
Channel Z	200	10.37	10.27
	- 200	-12.69	-12.80

3. Channel separation

DASY measurement parameters: Auto Zero Time: 3 sec; Measuring time: 3 sec

	Input Voltage (mV)	Channel X (μV)	Channel Y (μV)	Channel Z (μV)
Channel X	200	-	2.55	-0.94
Channel Y	200	0.77	-	2.38
Channel Z	200	-1.41	-0.39	-

TA Technology (Shanghai) Co., Ltd.

Test Report

No. RZA2008-1075FCC

Page 89 of 92

4. AD-Converter Values with inputs shorted

DASY measurement parameters: Auto Zero Time: 3 sec; Measuring time: 3 sec

	High Range (LSB)	Low Range (LSB)
Channel X	16118	16294
Channel Y	15879	15841
Channel Z	16155	16260

5. Input Offset Measurement

DASY measurement parameters: Auto Zero Time: 3 sec; Measuring time: 3 sec

Input 10M Ω

	Average (μ V)	min. Offset (μ V)	max. Offset (μ V)	Std. Deviation (μ V)
Channel X	0.35	-1.09	1.93	0.35
Channel Y	-1.29	-2.07	-0.24	0.35
Channel Z	-0.68	-1.73	0.45	0.36

6. Input Offset Current

Nominal Input circuitry offset current on all channels: <25fA

7. Input Resistance

	Zeroing (MOhm)	Measuring (MOhm)
Channel X	0.2000	198.4
Channel Y	0.2000	200.1
Channel Z	0.2001	199.5

8. Low Battery Alarm Voltage (verified during pre test)

Typical values	Alarm Level (VDC)
Supply (+ Vcc)	+7.9
Supply (- Vcc)	-7.6

9. Power Consumption (verified during pre test)

Typical values	Switched off (mA)	Stand by (mA)	Transmitting (mA)
Supply (+ Vcc)	+0.0	+6	+14
Supply (- Vcc)	-0.01	-8	-9

ANNEX H: THE EUT APPEARANCES AND TEST CONFIGURATION



4-a:

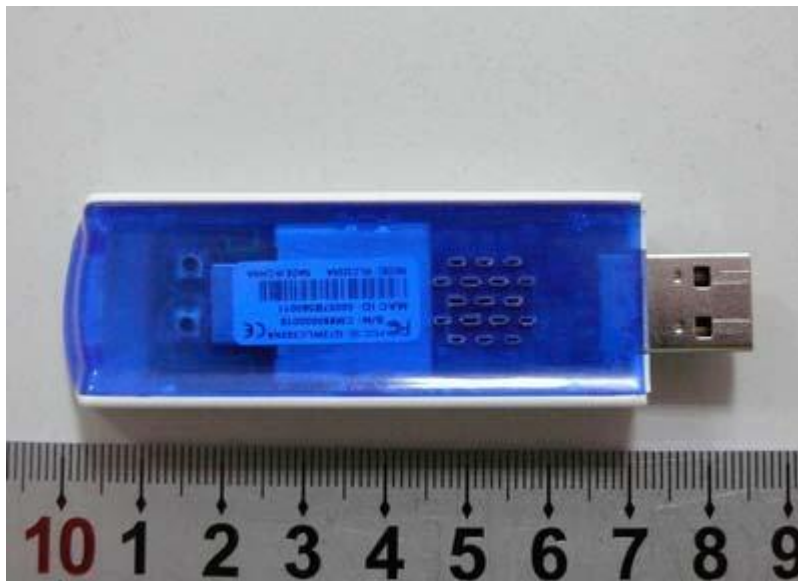


4:-b

Picture 4 Front of the EUT

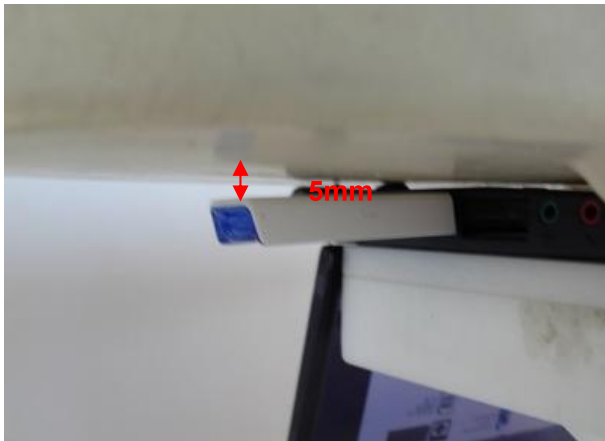


5-a:



5-b:

Picture 5 Rear of the EUT



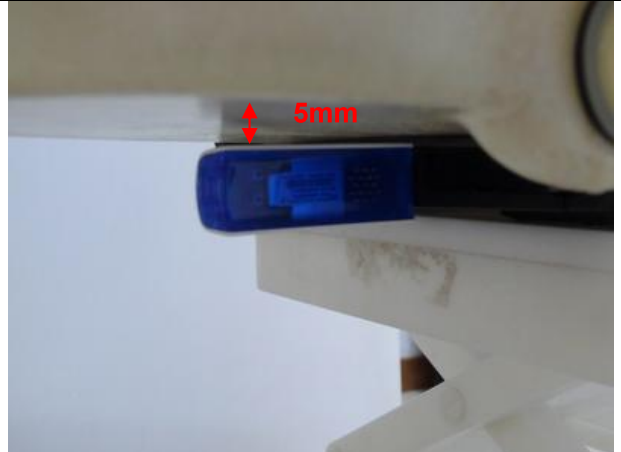
Picture 6-a Test position 1



Picture 6-b Test position 2



Picture 6-c Test position 3



Picture 6-d Test position 4



Picture 6-e Test position 5



Picture 6-f Test position 6

Picture 6 Test position of EUT