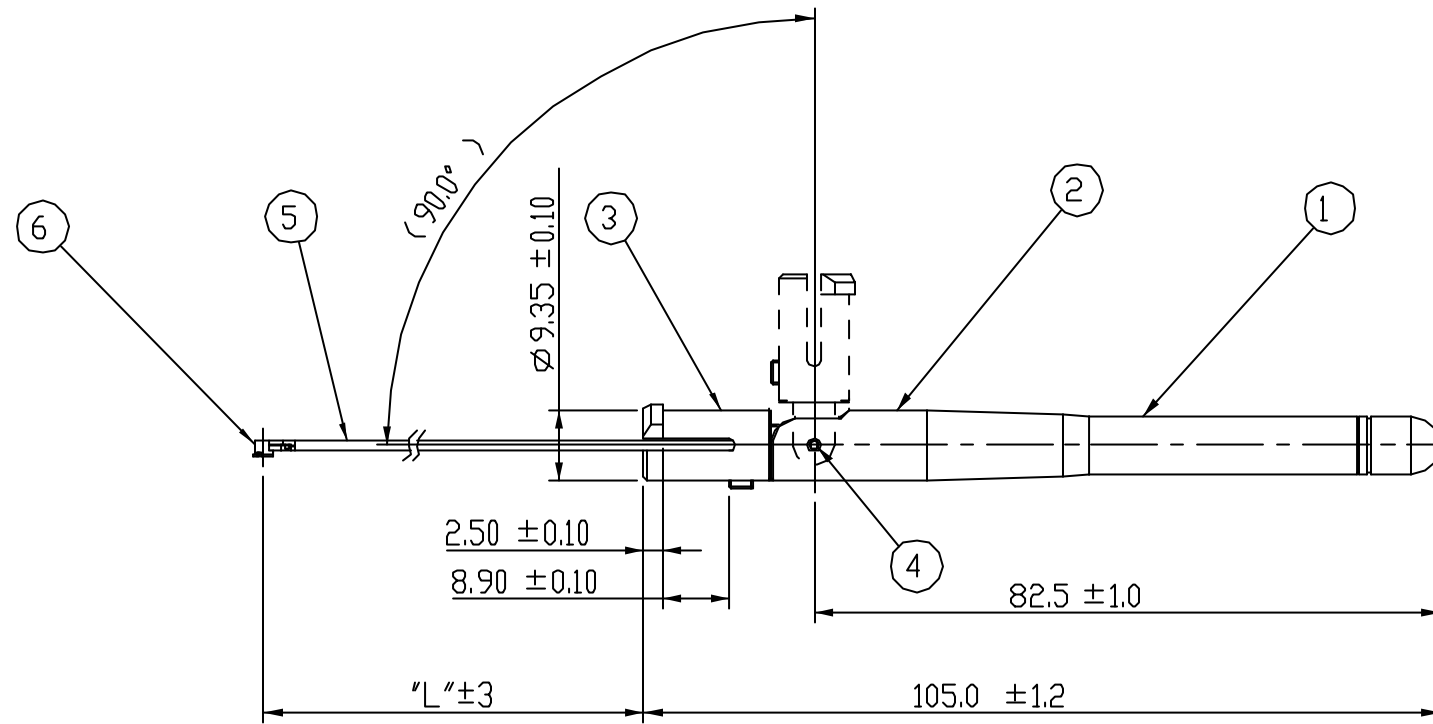


REVISION RECORD				
REV	ECO	DESCRIPTION	DRFT	CHKD



NOTE:

ELECTRICAL PROPERTIES

1. DESCRIPTION: 1/4 SWIVEL TYPE DIPOLE ANTENNA  
Ø9X82.5+MI-113+I-PEX CONNECTOR
2. FREQUENCY: 2.4 G~2.5G
3. IMPEDANCE: 50 OHMS NOMINAL
4. V.S.W.R.: 2.0 MAX. IN BAND
5. GAIN: NOMINAL GAIN 1.14dBi~1.8dBi VERTICAL DIRECTION
6. ADMITTED POWER RADIATION: 1W
7. POLARIZATION: VERTICAL
8. ELECTRICAL LENGTH: 1/4, DIPOLE
9. RADIATION: OMNI

MECHANICAL PROPERTIES

1. CABLE: MI-113 50 OHMS
2. OPERATING TEMPERATURE RANGE: -20°C~+65°C
3. STORAGE TEMPERATURE RANGE: -30°C~+75°C
4. ROHS COMPLIANT
5. PART NUMBER: E42-1G24XX0V01

ITEM	PART NAME	DESCRIPTION	Q'TY
1	HEAD COVER	TPEE 55D	1
2	TOP CONNECTOR	PBT+PC	1
3	DOWN CONNECTOR	PBT+PC	1
4	PIN	STEEL ZN/B	2
5	CABLE	MI-113 CABLE	1
6	CONNECTOR	I-PEX	1

L DESCRIPTION	
L DIM	NUMBER
90	090
100	100
105	105
340	340
365	365
395	395

L DESCRIPTION	
L DIM	NUMBER
170	170
190	190
250	250

DETACHED LISTS TOLERANCES EXCEPT AS NOTED .0 ± 0.2 .00 ± 0.15 .000 ± 0.075 ANGLES ± 0.5 THIRD ANGLE PROJECTION	DFTD Catherine DATE 12/05/2005 CHKD JOE&Pan DATE 12/06/05 MFD Steven DATE 12/06/05 APPVL JEFF DATE 12/06/05	FULL RISE ELECTRONIC CO., LTD		
	MATERIAL :		TITLE Ø9 2.4G ANTENNA+MI-113+I-PEX	
	Q'TY :		DRAWING NO. GE423C61-L /PART NO. SEE NOTE	SIZE A3 REV 0
	SCALE : 1:1		DO NOT SCALE DRAWING	SHEET 1 OF 1