

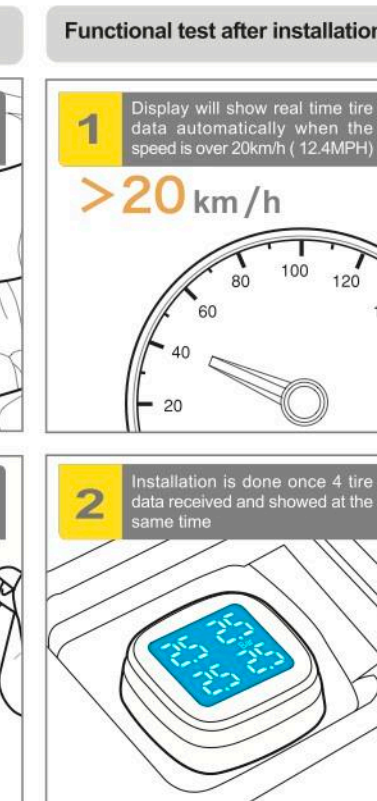
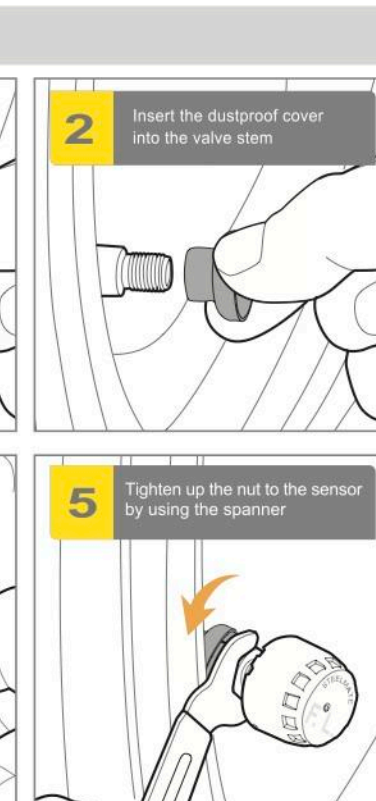
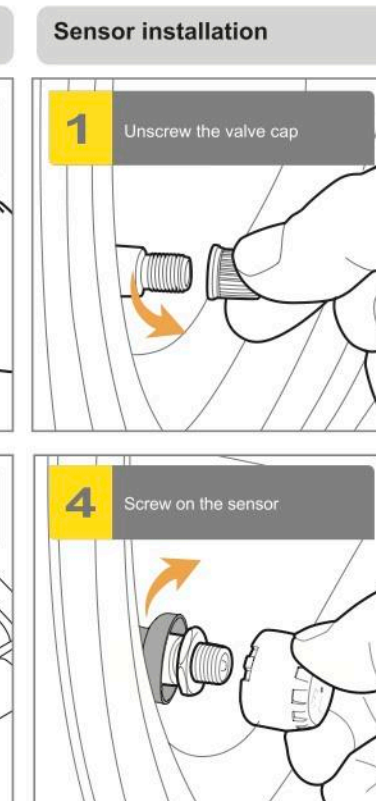
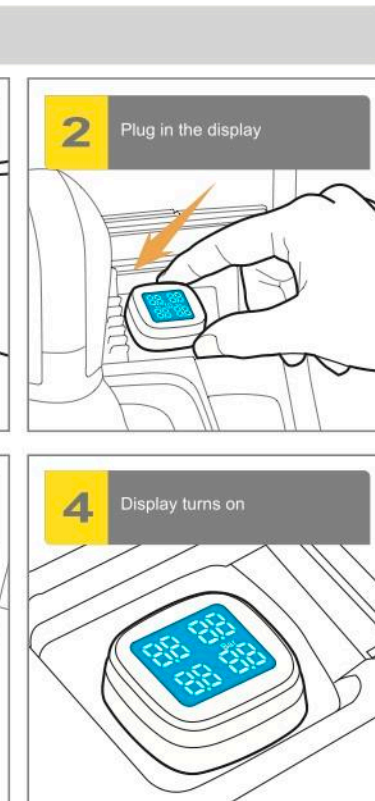
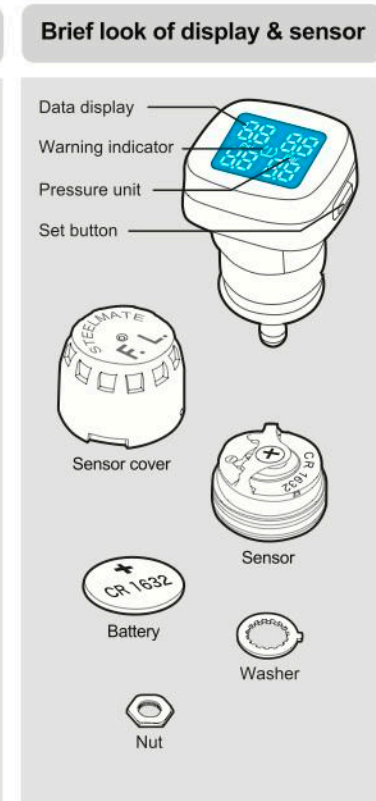
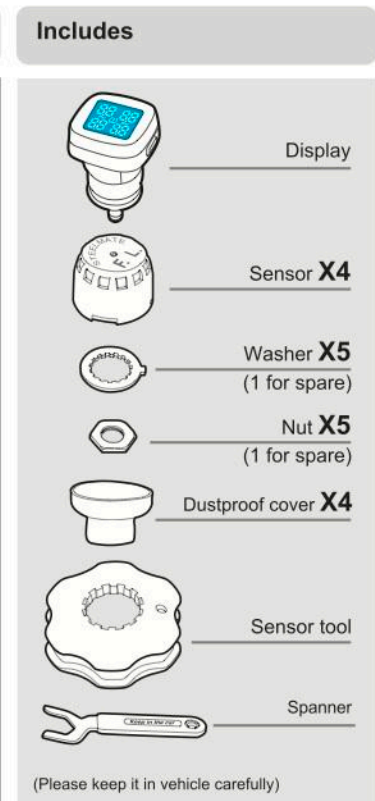


**Specifications**

**Sensor (Transmitter):**  
Operating frequency: 433.92MHz  
Battery voltage: 1.8V~3.3V  
Operating temperature: -20°C~+60°C/  
-4°F~+140°F  
Pressure range: 0~5 Bar/0~73PSI

**Display (Receiver):**  
Operating frequency: 433.92MHz  
Operating voltage: 12±3V  
Operating temperature: -20°C~+70°C/  
-4°F~+158°F  
Precision:  
Temp: ±1°C/±2°F  
Pressure: ±0.1Bar/1.5PSI  
Default value:  
High pressure value: 3.3Bar/47PSI  
Low pressure value: 1.7Bar/25PSI  
High Temp value: 80°C/176°F

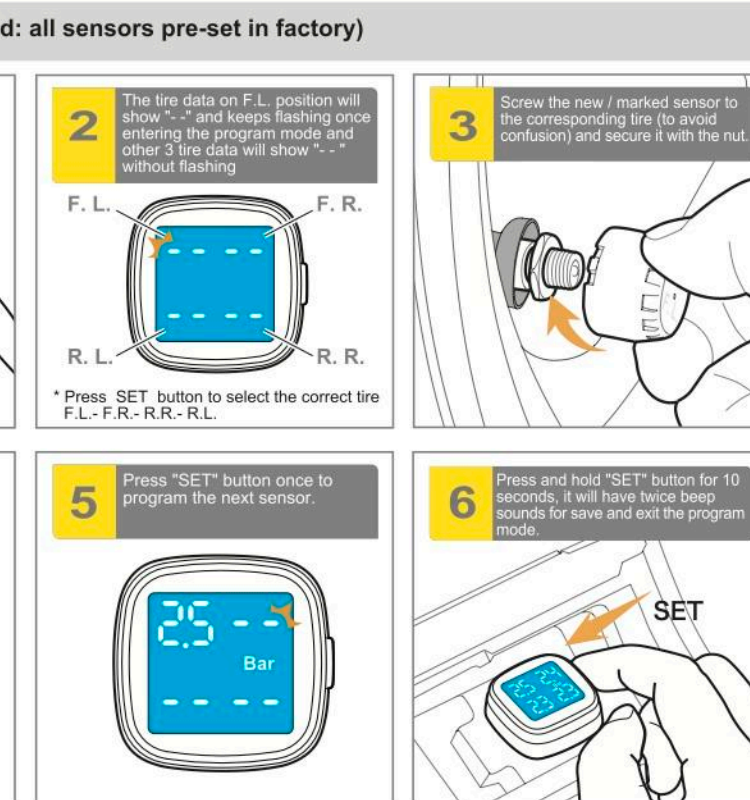
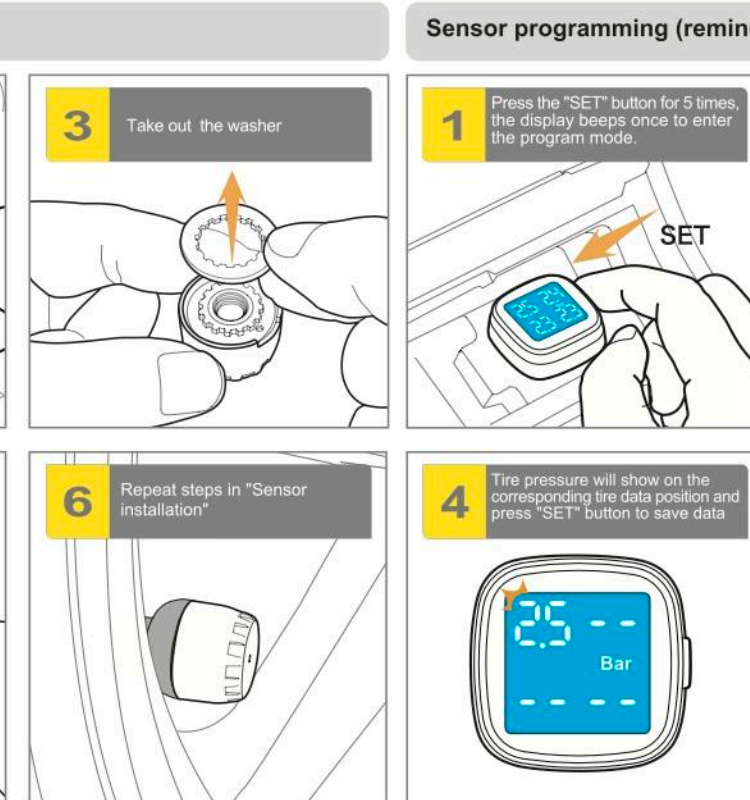
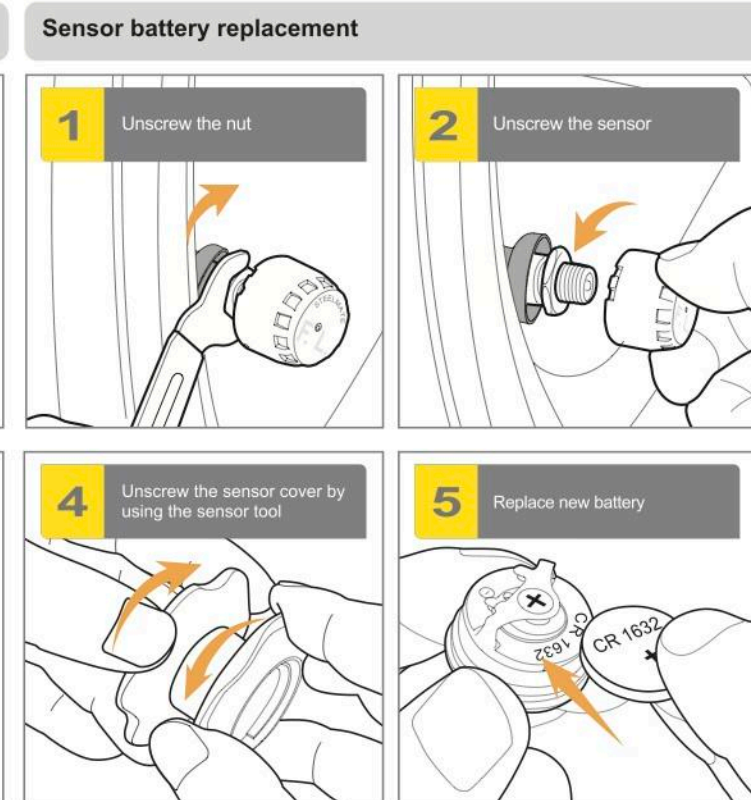
**Air pressure unit:**  
1 Bar = 14.5 PSI = 100K Pa = 1.02 Kg/cm<sup>2</sup>



Think safety think Steelmate

STEELMATE CO., LTD.  
Steelmate Industrial Park,  
Heping Street, Dongfeng Road, Dongfeng Town,  
Zhongshan City, Guangdong, P.R. China 528425  
www.steel-mate.com

©Steelmate Co., Ltd. All rights reserved.  
All the registered trademarks are the property of their respective owners.  
The trademark, patent and copyright are owned by Steelmate Co., Ltd.  
The right to change the design and specifications reserved.



PPI0111R/B