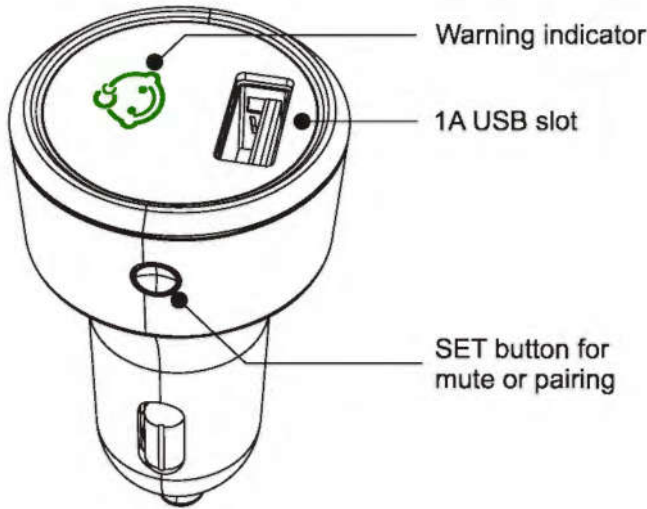


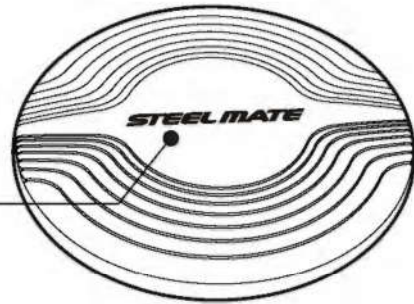
Brief look



Seat belt detection kit
(To be pasted on the inside of the driver's seat belt)

CIG lighter display

Sensor pad
(To be placed under car seat cushion)



How to use

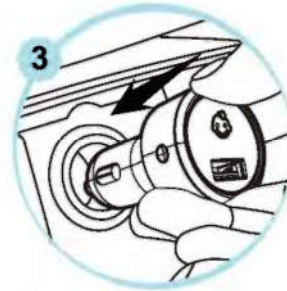
1. Put your baby on the car seat before ACC ON:



Put the sensor pad under the car seat cushion

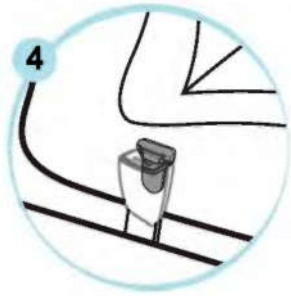


Put the baby on the seat and click the seat belt safely



Plug the display in
(Do not press SET button)

How to use



Stick on the inside of the driver's driver's seat belt slot



ACC ON



Display turns on with green light, then "Bi" twice within 3 minutes



Buckle the driver's seat belt

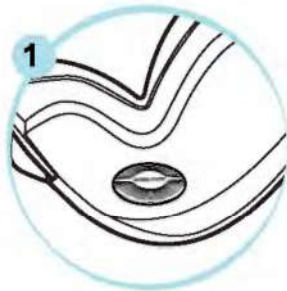


The display "Bi" once to indicate the seat belt is buckled

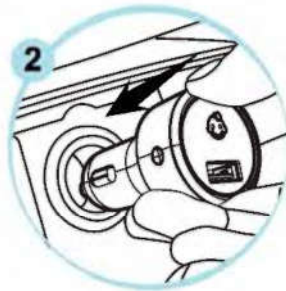


The system enter the working mode

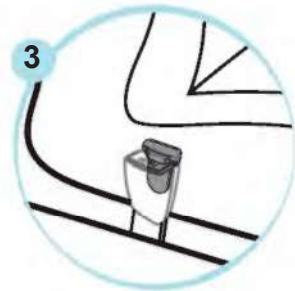
2. Put your baby on the car seat after ACC ON:



Put the sensor pad under the car seat cushion



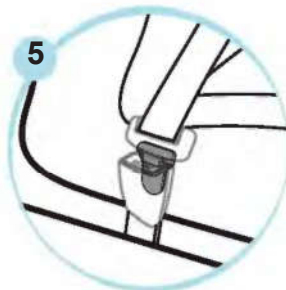
Plug the display in (Do not press SET button)



Stick on the inside of the driver's seat belt slot



ACC ON



Buckle the driver's seat belt



The display "Bi" once to indicate the seat belt is buckled

How to use

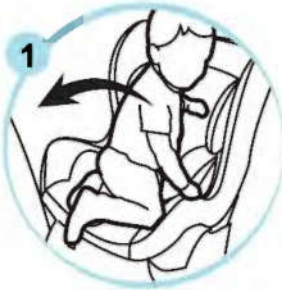


Put the baby on the seat and click the seat belt safely

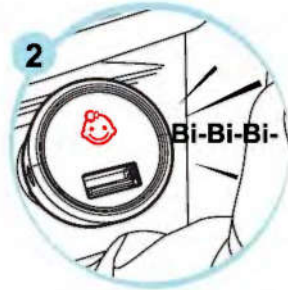


Display will "Bi" twice immediately to enter working mode

3. Baby is left the car seat while driving:



Baby is left the car seat (Stand or not sit on the pad)



Display will "Bi" three times, the warning light will turn to red



Put the baby back to the car seat (Sit on the pad)



Display will back to normal status with green light

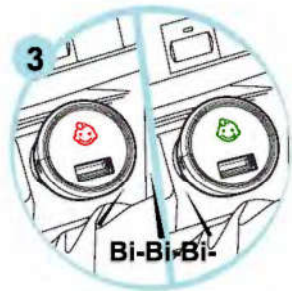
4. Baby is remained on the car seat after ACC OFF:



ACC OFF



Baby is remained on the car seat



The display will flashing in turn with red & green lights until baby left the car seat or the display is turn off.

How to use

5. Baby is remained on the car seat after unbuckle the driver's seat belt:



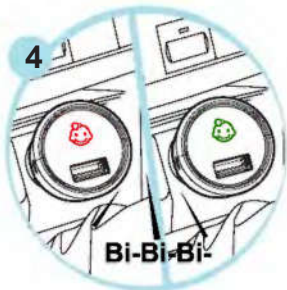
Unbuckle the driver's seat belt



The display "Bi" once to indicate the seat belt is unbuckled



Baby is remained on the car seat



The display will flashing in turn with red & green lights until baby left the car seat or the display is turn off.

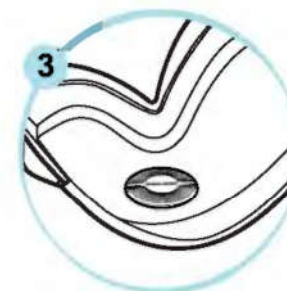
6. Baby didn't sit on the car seat within 15 minutes after ACC ON:



ACC ON



Display turns on with green light



No baby on car seat in 15 minutes



ACC OFF



Display will turn off immediately

How to use

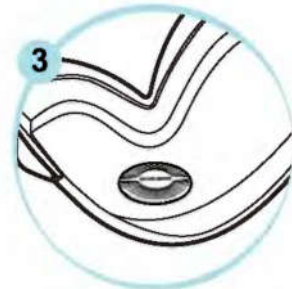
7. Baby didn't sit on the car seat more than 15 minutes after ACC ON:



ACC ON



Display turns on with green light



No baby on car seat in 15 minutes



Display turn yellow to enter the sleeping mode



Put baby back to the car seat(Sit on the pad)

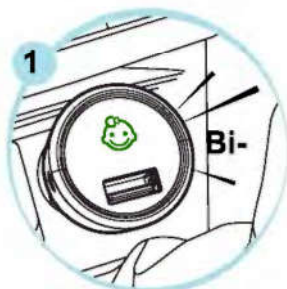


Display turn green, then " Bi " twice to enter the working mode

Voice adjustment

When ACC ON, the system enter the voice mode.

Hold the "SET" button for 3 seconds to enter the voice setting mode. The display will "Bi" twice to indicate it's in mute mode, "Bi" once means in voice mode.



Voice mode: Voice ON



Mute mode: Voice OFF

Note:

- 1.The baby is remained on the car seat after ACC OFF, display will still alarm when it's in mute mode.
- 2.The system is in voice mode when ACC ON every time.

Low battery reminder

When ACC ON, and baby sit on the car seat.

If sensor pad in low battery status

ACC ON, and baby sit on the car seat, when the system detects the sensor pad is in low battery status, the display will warning and yellow light flashing for 3 times, then the light will return to green, and the system will back to the working mode.

If seat belt detection kit in low battery status

Buckle the seat belt, when the system detects seat belt detection kit is in low battery status, the display will warning and yellow light flashing once, then the light will return to green, and the system will back to the working mode.



Note:

1. If not replace the battery in time, the display will alarm every time when ACC ON or buckle the seat belt.
2. If no baby sit on the car seat, the display will not alarm to remind that sensor pad is in low battery status.

Product programming

(Reminder: The sensor pad and the seat belt detection kit are pre-programmed)



ACC ON



Display turns on with green light

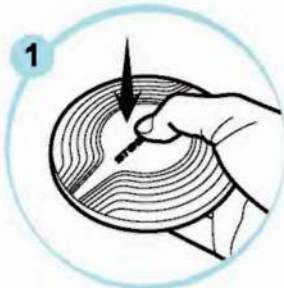


Press "SET" button for 5 times



Display turn yellow and "Bi" once to enter programming mode

• If sensor pad to be programmed

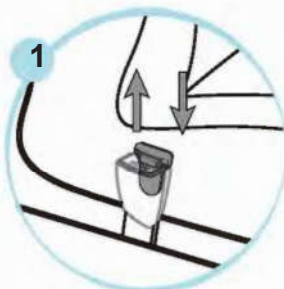


Hold the sensor pad for 2 seconds

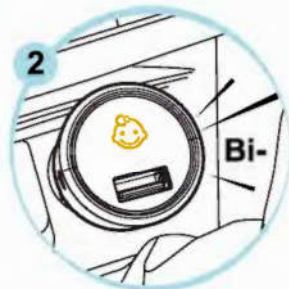


The display will "Bi" twice with green light flashing, then enter the next programming.

• If seat belt detection kit to be programmed



Buckle the driver's seat belt, then unbuckle it



The display will "Bi" once with yellow light flashing, then enter the next programming

After all parts are programmed, hold "SET" button, Then the display will warning to save and exit the programming mode.

Note: 1.Only 2 sensor pads and 1 seat belt detection kit can be up to programmed.
2.If there is no operation within 2 minutes, the system will exit the programming mode automatically.

Specifications

Display	
Operating frequency:	433.92 ± 0.5MHz
Operating voltage:	DC 9 ~ 16V
Operating temperature:	-20℃ ~ +60℃
Storage temperature:	-40℃ ~ +80℃
USB output:	DC 5V / 1A
SPL:	70 ~ 90dB
Sensor pad	
Standard voltage:	DC 3V (2V~3.6V)
Operating frequency:	433.92 ± 0.5MHz
Operating temperature:	-20℃ ~ +60℃
Storage temperature:	-30℃ ~ +80℃
Button press force:	>20N
Baby weight range:	2 ~ 36kg
Seat belt detection kit	
Operating frequency:	433.92 ± 0.5MHz
Operating voltage:	DC 3V (2V~3.6V)
Operating temperature:	-20℃ ~ +60℃
Storage temperature:	-30℃ ~ +80℃

F&Q

1. The display light not turn on

- Display damaged.
- ACC ON.

2. Sensor pad not work

- Sensor pad battery is low, please change to new sensor pad.
- The display and sensor pad are not programmed.

3. Sensor belt detection kit not work

- The sensor belt detection kit battery is low, please change to new sensor belt detection kit.
- The display and sensor belt detection kit are not programmed.
- The seat belt buckles with inner wall thickness >7mm, will affect the use of this part.

4. The display not alarm when baby is remained on the car seat after ACC OFF

- Put the baby on the car seat, then ACC ON, and the driving time less than 10 minutes.
- The vehicle with the CIG lighter has the electricity after flame out, must be equipped with seat belt detection kit.

5. The display turn yellow when baby sit on the car seat after ACC ON

- Sensor pad battery is low, please change to new sensor pad.
- The display and sensor pad are not programmed.

Disclaimer

1. This system is designed for reminding drivers to take their baby with them whenever they leave the car.
2. STEELMATE does not take any responsibility for any accident happen because of negligence.
3. This system is designed for a reminder purpose only, not a lifesaver.
4. Before using this system, please read the manual carefully.

Notices

- The system is also suitable for the vehicle with the CIG lighter has the electricity after flame out, but must be equipped with seat belt detection kit.
- Please take care of your baby and check the baby seat once display is warning.
- Make sure your baby meets the requirements: weight 2~36kg. se replace
- Please remind other caregiver who first use this system which vehicle was installed.
- Once sensor pad or seat belt detection kit is running down of battery or get damage, please new one ASAP. You can buy from retailer or buy from STEELMATE online shop.
- If you have any question, please email us at customerservice@steel-mate.com.
- The sensor belt detection kit is only suitable for seat belt buckles with inner wall thickness < 7mm. If not, may lead to seat belt buckle monitoring failure.

CE warning statement

Remark: This product can be used across EU member states

We, STEELMATE CO., LTD. (Steelmate Industrial Park, Heping Street, DongFu Road, DongFeng Town, ZhongShan City, GuangDong, P.R.China) declares that this device is in compliance with the essential requirements and other relevant provisions of Directive 2014/53/EU.

FCC Statement:

This device complies with part 15 of the FCC Rules. Operation is subject to the following two conditions: (1) This device may not cause harmful interference, and (2) this device must accept any interference received, including interference that may cause undesired operation.

This equipment has been tested and found to comply with the limits for a Class B digital device,

Pursuant to part 15 of the FCC Rules. These limits are designed to provide reasonable protection against harmful interference in a residential installation. This equipment generates, uses and can radiate radio frequency energy and, if not installed and used in accordance with the instructions, may cause harmful interference to radio communications. However, there is no guarantee that interference will not occur in a particular installation. If this equipment does cause harmful interference to radio or television reception, which can be determined by turning the equipment off and on, the user is encouraged to try to correct the interference by one or more of the following measures:

- Reorient or relocate the receiving antenna.
- Increase the separation between the equipment and receiver.
- Connect the equipment into an outlet on a circuit different from that to which the receiver is connected.
- Consult the dealer or an experienced radio/TV technician for help.

Caution: Any changes or modifications to this device not explicitly approved by manufacturer could void your authority to operate this equipment.

This equipment complies with FCC radiation exposure limits set forth for an uncontrolled environment. This equipment should be installed and operated with minimum distance 0cm between the radiator and your body.