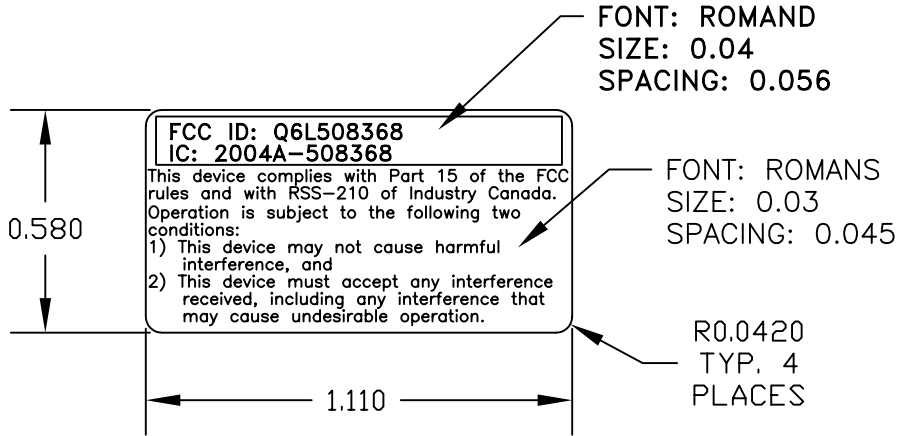


REVISION RECORD

LTR.	WRK SHT	ECO NO	DESCRIPTION	REVISED BY	DATE	APVD
A	138	27093 V	ISSUE DRAWING	JG	02/12/03	

MFG: MCS MID CONTINENT SCREENER, INC.



SCALE 2:1

COLORS:
BACKGROUND: WHITE
COPY: BLACK

MATERIAL:
PRESSURE SENSITIVE VINYL SUPPLIED ON ROLLS.
ADHESIVE TO BE OF A PERMANENT TYPE & MUST
HOLD LABEL SECURE TO A TEXTURED PLASTIC SURFACE.

		ELECTRONIC SYSTEMS DIVISION ST. LOUIS, MO 63045		SIZE A
DRAWN BY JG		TITLE LBL, FCC XMTR .86X1.25 310MHZ		
CHECKED BY		CODE	PART NO. 507968	
SCALE NONE		DATE 02/12/03	SHEET 1 OF 1	

UNLESS OTHERWISE SPECIFIED

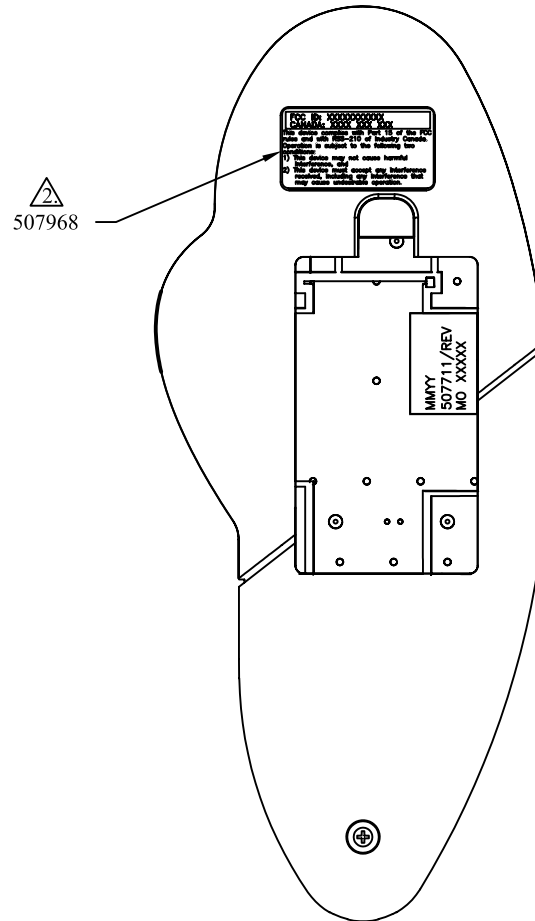
DIMENSIONS ARE IN INCHES
 TWO PLACE DECIMALS ±.03
 THREE PLACE DECIMALS ±.005

FRACTIONS ±1/64
 ANGLES ±2°

NOTES:

1. AFTER SCREWS HAVE BEEN TIGHTENED, APPLY FCC LABEL(BS#507968) AS SHOWN.

2. ALIGN LABEL ON RECTANGULAR DEPRESSION, COVERING THE SCREW AND KEEPING THE LABEL WITHIN THE DEPRESSION.



NOTE: ILLUSTRATIONS ON THIS PAGE ARE FOR ASSEMBLY REFERENCE ONLY & NOT INTENDED TO SHOW INTIMATE DETAILS.



ELECTRONIC SYSTEMS
DIVISION
ST. LOUIS, MO 63045

ASSEMBLY PROCESS

FINAL ASSEMBLY

1ST ARTICLE BUILD

TITLE

H/C ASSY TEMPUREGO WRLS

DRWN BY
JG

CUSTOMER
L&P

PART NO.
508268

OP #
10

DATE
04/04/03

SHEET
3 OF 3