

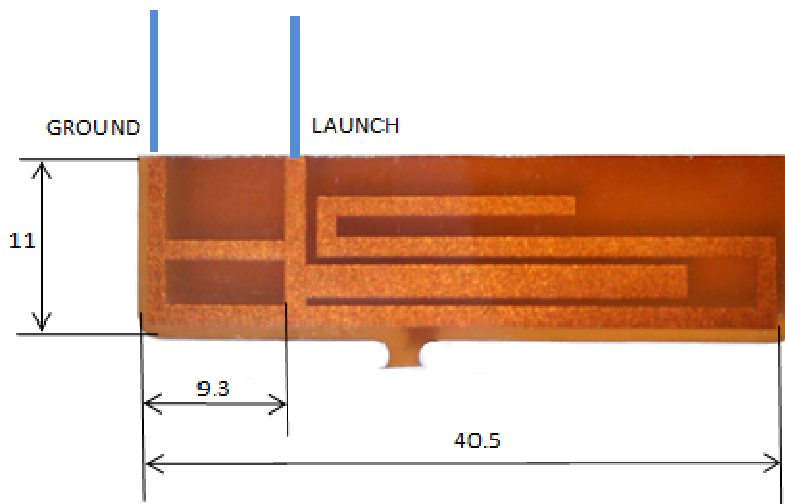
ANTENNA INFORMATION

This radio product is equipped with internal, non-detachable antennas characterized below.

1. Data modem antenna, connected to FCC certified transmitter RI7CE910DUAL.

1.1 Physical properties.

The modem antenna is an inverted F type, printed on the flex board attached to the edge of the modem module (RI7CE910DUAL)

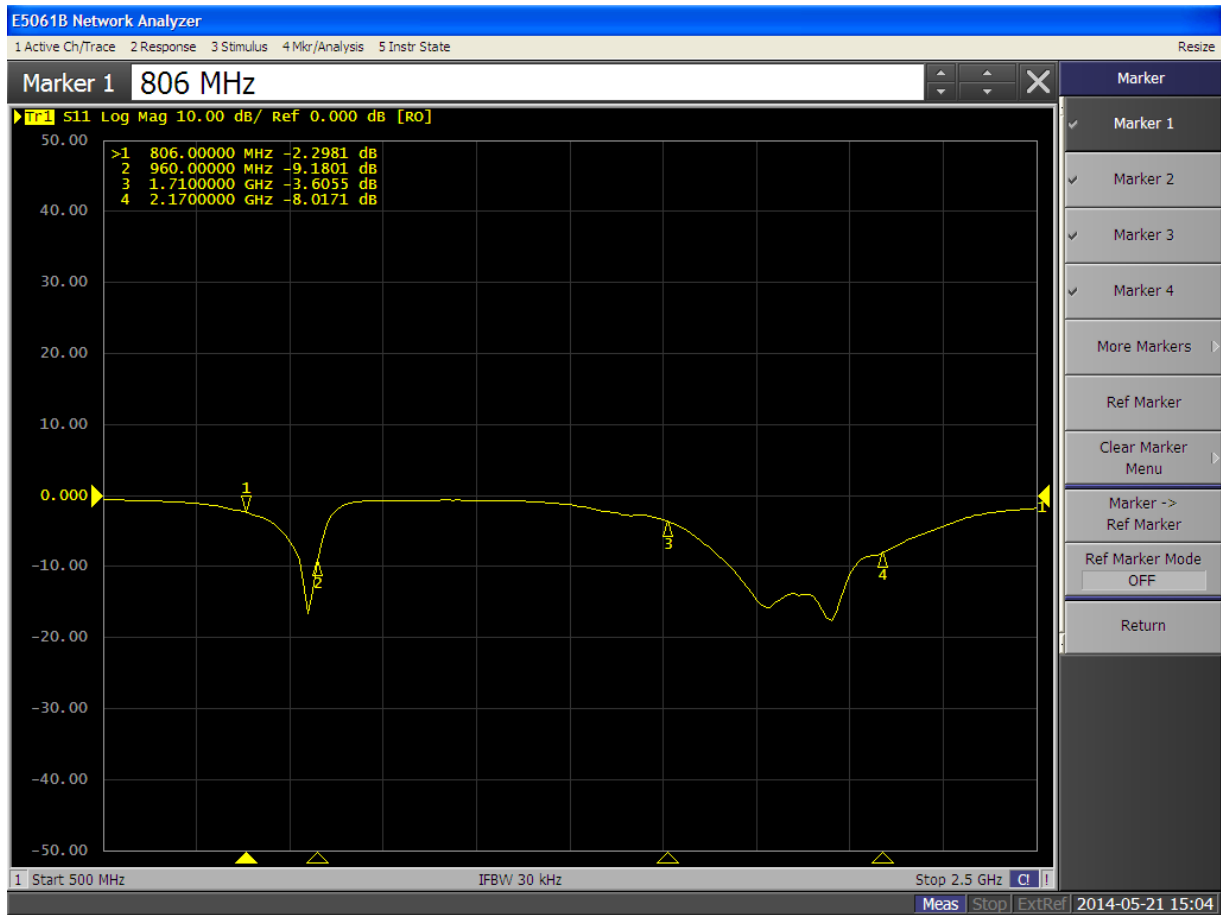


1.2 Frequency coverage

BAND	LOW BANDEDGE	HIGH BANDEDGE
	MHz	MHz
1	806	960
2	1710	2170



1.3 Impedance



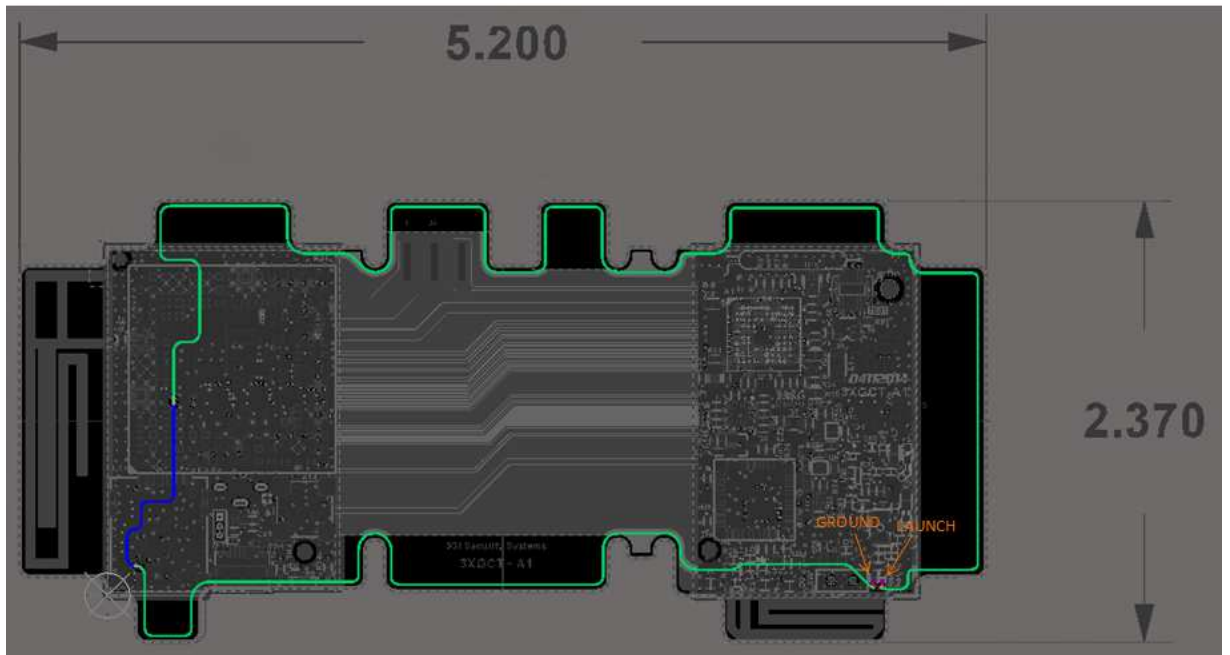
1.4 Antenna Gain

BAND	Gain
	dBi
1	2.4
2	2.8

2. Beacon antenna

2.1 Physical properties.

The beacon antenna is implemented as a closed loop (a trace) around the PCB perimeter. The total length of the trace is: 16.363"

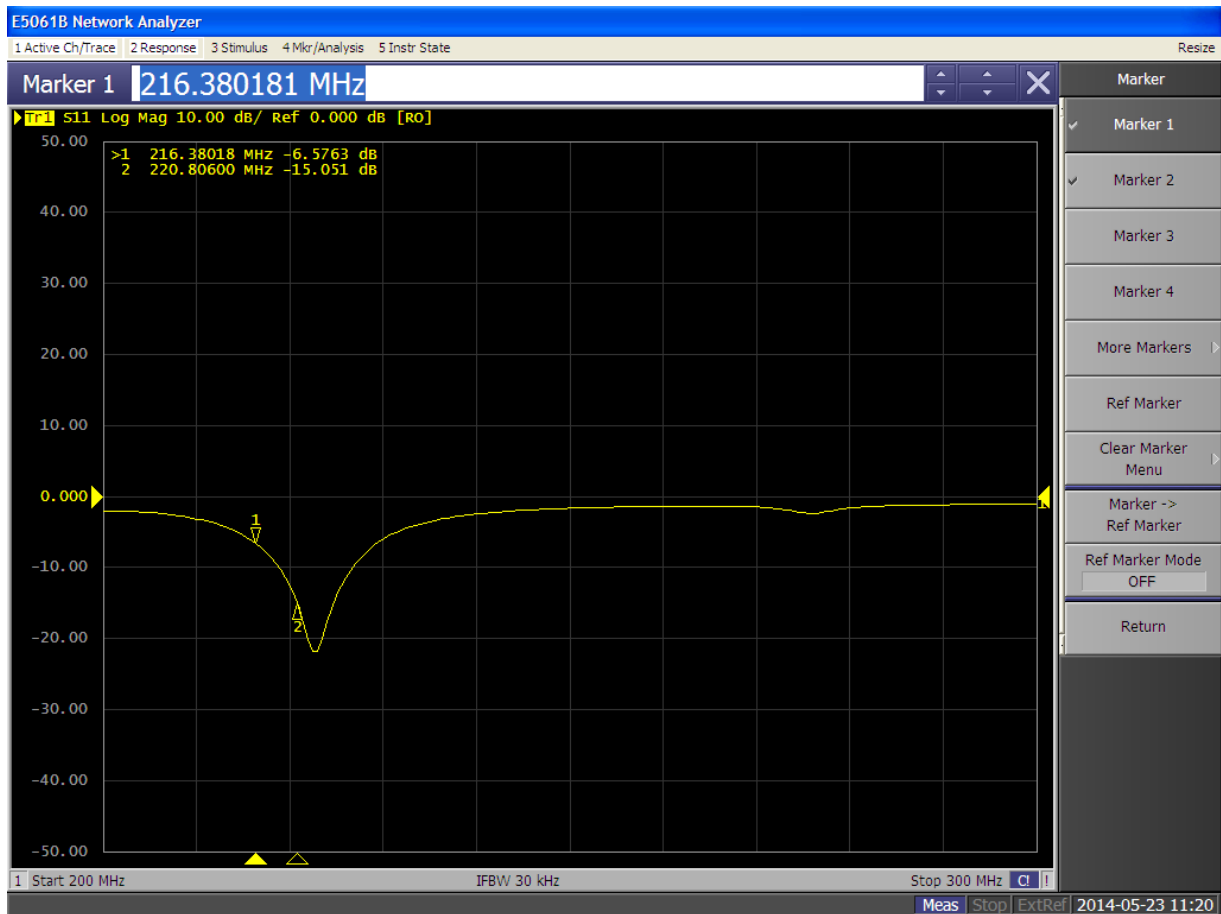


2.2 Frequency coverage.

LOW BANDEDGE	HIGH BANDEDGE
MHz	MHz
210	240



2.3 Measured impedance



2.4 Antenna Gain

FREQUENCY	Gain
MHz	dBi
216.475	-36.4
219.600	-35.2